



Cholera Situation Report

MONTHLY EPIDEMIOLOGICAL REPORT 10

Epidemiological week 27: (01 July 2024 – 07 July 2024)

Key Points

Table 1: Current Epi-summary for week 27, 2024

Suspected Cases	Deaths (Suspected cases)	Case Fatality Ratio (%)	States Reporting Cases	LGAs Reporting cases
116	3	2.6%	6	24

Table 2: Cumulative suspected cases (Epi week 1 - 27, 2024)

Suspected Cases	Deaths (Suspected cases)	Case Fatality Ratio (%)	States Reporting Cases	LGAs Reporting cases
2809	82	2.9%	33	148

Table 3: Summary of monthly reported cases (Epi week 1 - 27, 2024)

Months	Epi-Weeks	Suspected Cases	Deaths (Suspected cases)	Case Fatality Ratio (%)	States Reporting Cases	LGAs Reporting cases
January	1 - 4	312	3	1.0%	14	29
February	5 – 8	317	10	3.2%	21	36
March	9 – 12	242	4	1.8%	19	38
April	13 - 17	102	3	3.7%	11	23
May	18 – 22	106	2	2.3%	16	26
June	23 – 26	1614	41	3.7%	12	44
July	27	116	3	2.6%	6	24

	Week	Week	
	1	27	
Summary	2023	2024	% Change
Suspected Cases	2,620	2,809	7%
Deaths	73	82	12%
CFR	2.8%	2.9%	5%

Table 4: Comparison of cumulative cases as of week 27, 2023 and 2024

Week 27 Highlight

- 116 new cases were reported, 3 deaths with CFR = 2.6%
- 6 States Lagos (102), Ebonyi (6), Niger (2), Oyo (2), Bauchi (2) and Kogi (2) reported cases of Cholera within the Epidemiological week

In the reporting month,

- States have reported 116 suspected cases of Cholera, Lagos (102), Ebonyi (6), with Niger, Oyo, Bauchi and Kogi each reporting two cases (2)
- 3 deaths were recorded with CFR = 2.6%
- 12 Rapid Diagnostic Tests (RDT) were conducted with 4 positive results
- 15 stool culture tests were conducted and with 2 positive results
- National multi-sectoral Cholera TWG continues to monitor response across states

Cumulative Epi-Summary for 2024

- As of 7th July 2024, a total of **2,809 suspected cases including 82 deaths (CFR 2.9%)** have been reported from 33 states
- Of the suspected cases since the beginning of the year, age groups **<5 years** are mostly affected, followed by the age groups **25 - 34 years** in aggregate of both males and females
- Of all suspected cases, **53% are males and 47 are females**
- Lagos (1,560 cases) accounts for 56% of all suspected cases in the country of the 33 States that have reported cases of cholera
- Lagos Island LGA (295 cases) in Lagos State accounts for 11% of all suspected cases reported in the country
- Other States; Bayelsa (476 cases), Ebonyi (110), Abia (109), Katsina (88 cases), Zamfara (64 cases), Delta (64 cases), Bauchi (54 cases), Cross river (43 cases), Rivers (37 cases), Imo (28), Ogun (21), Nasarawa (19 cases), Kano (18), Ondo (17 cases), Oyo (15), Niger (15), Osun (11 cases) and Akwa Ibom (10) account for 42.7% of the suspected cases this year
- Comparatively, suspected cases of Cholera in the current year have decreased by 7% compared to what was reported as at Epi-week 27 in 2023. Likewise, cumulative deaths recorded have decreased by 5% in 2024

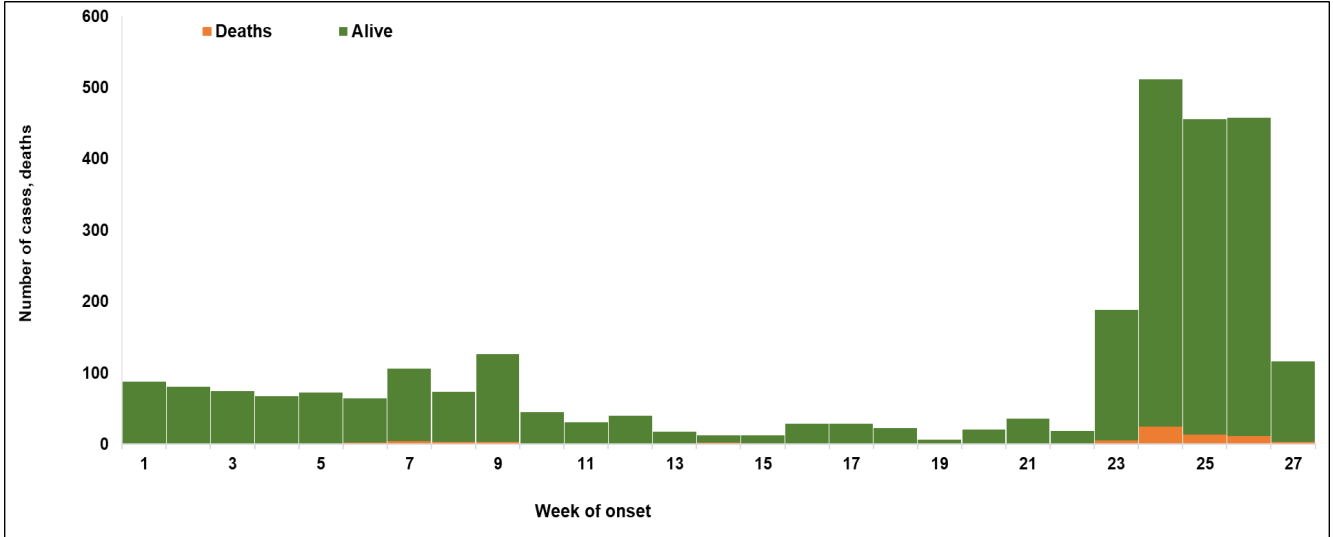


Figure 1: National epidemic curve of weekly reported Cholera cases, week 1 to week 27, 2024

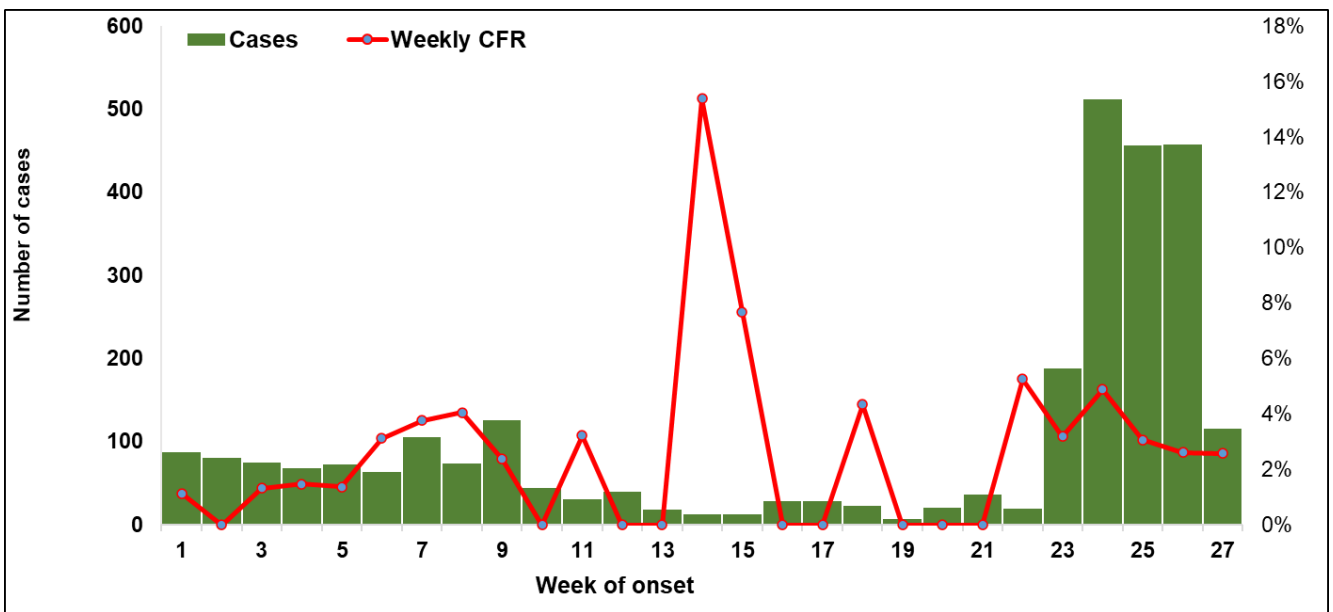


Figure 2: Trends in Case Fatality Ratio (CFR), Epi weeks 1 – 27, 2024, Nigeria

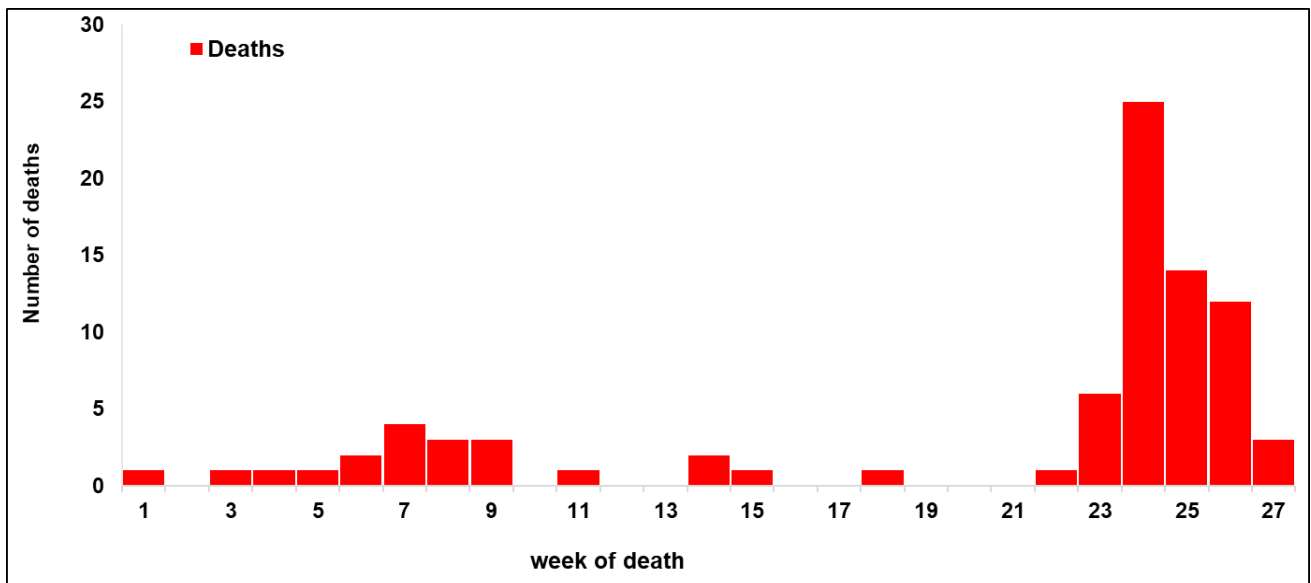


Figure 3: Trends in deaths, Epi weeks 1 - 27, 2024, Nigeria

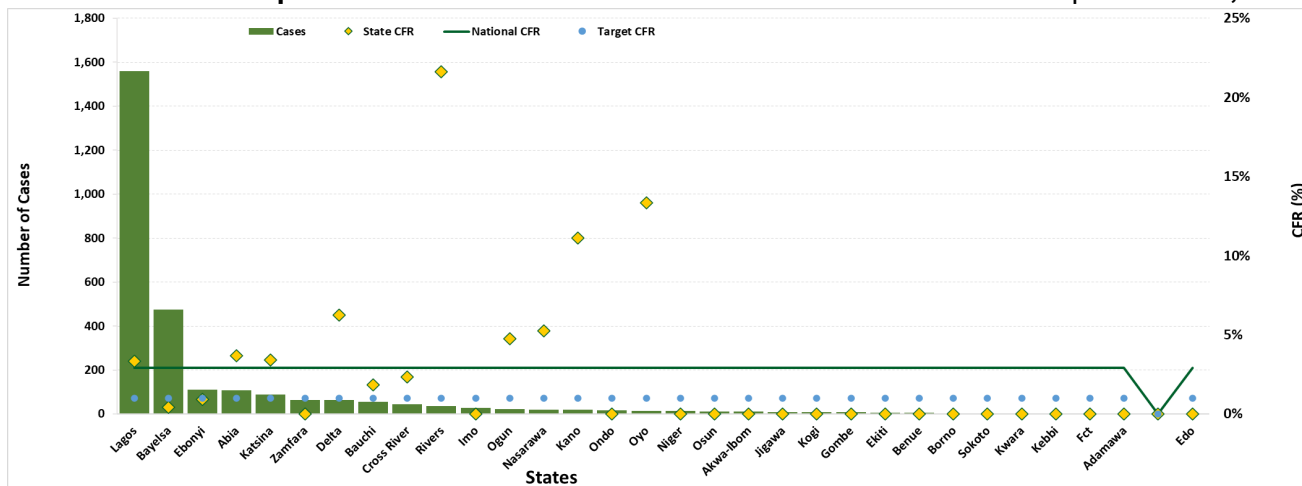


Figure 4: States' Cholera cases by Case fatality ratio (CFR) Epi-weeks 1 - 27, 2024

Table 5: Top 9 States in cumulative cases

No	State	Cases	Percent of cumulative cases	Cumulative % of total cases
1	Lagos	1,560	56%	56%
2	Bayelsa	476	17%	73%
3	Ebonyi	110	4%	77%
4	Abia	109	4%	81%
5	Katsina	88	3%	84%
6	Zamfara	64	2%	86%
7	Delta	64	2%	88%
8	Bauchi	54	2%	90%
9	Cross River	43	2%	92%
Total		2568	92%	

Table 6: Top 14 Local Government Areas (LGAs) in cumulative cases

No	LGA	State	Cases	% of cumulative cases	Cumulative %
1	Lagos Island	Lagos	295	11%	11%
2	Eti-Osa	Lagos	191	7%	17%
3	Lagos Mainland	Lagos	184	7%	24%
4	Southern Ijaw	Bayelsa	158	6%	29%
5	Alimosho	Lagos	120	4%	34%
6	Kosofe	Lagos	106	4%	38%
7	Apapa	Lagos	87	3%	41%
8	Ikorodu	Lagos	78	3%	46%
9	Ajeromi/Ifelodun	Lagos	70	2%	49%
10	Yenagoa	Bayelsa	68	2%	51%
11	Warri South West	Delta	64	2%	53%
12	Epe	Lagos	58	2%	55%
13	Talata Mafara	Zamfara	57	2%	57%
14	Surulere	Lagos	56	2%	59%
Total			1670	59%	

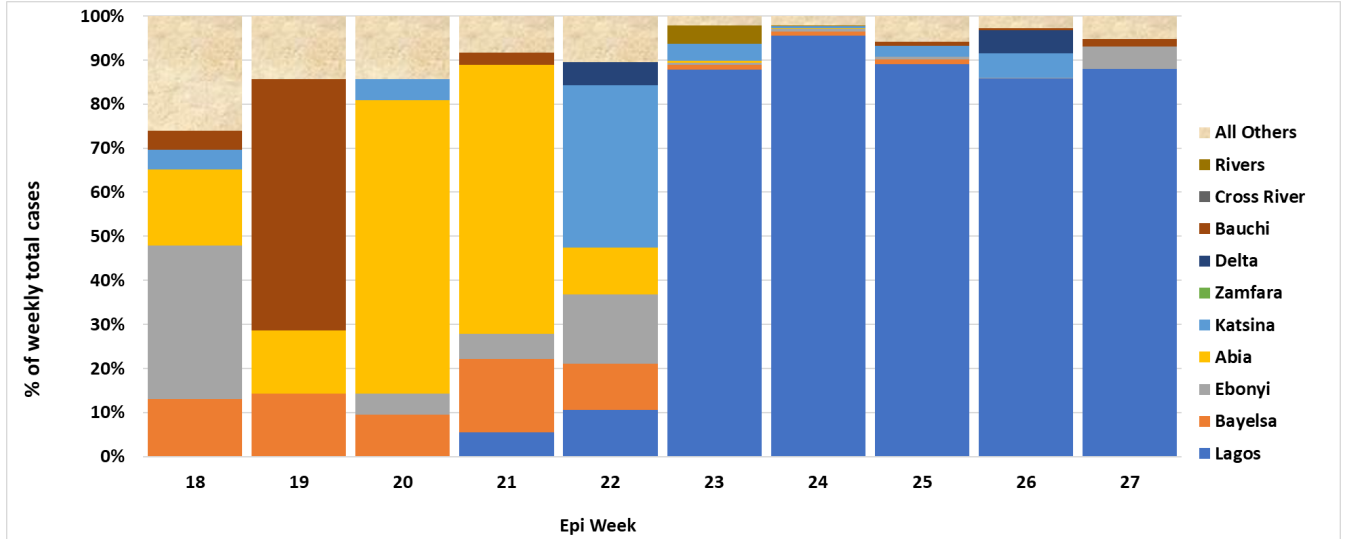


Figure 5: Proportion contribution of suspected cases by states in recent 10 epidemiologic week

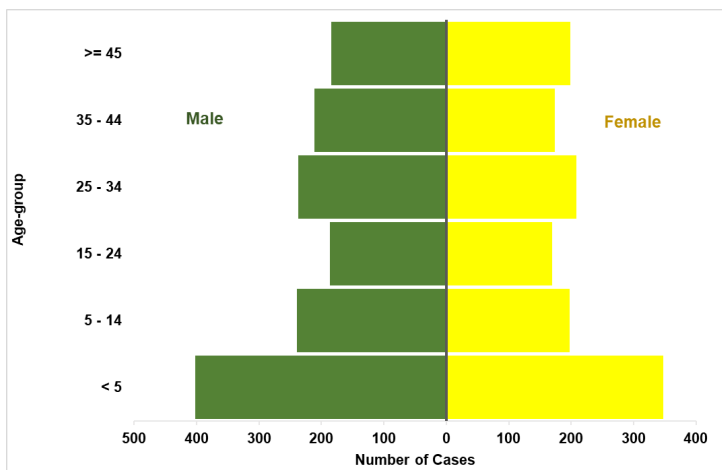


Figure 6. Age-Sex Pyramid for cumulative Cholera Cases, week 1-27, 2024: N=2,096

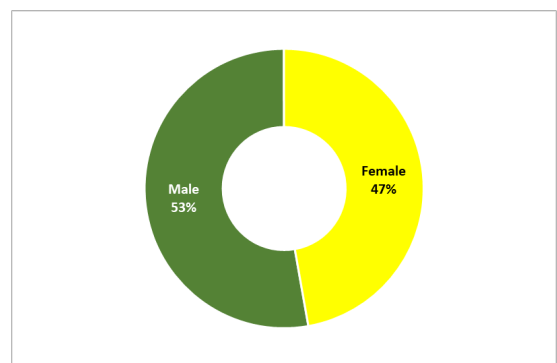


Figure 7. Sex disaggregation for cumulative Cholera cases, week 1-27, 2024: N=2,096

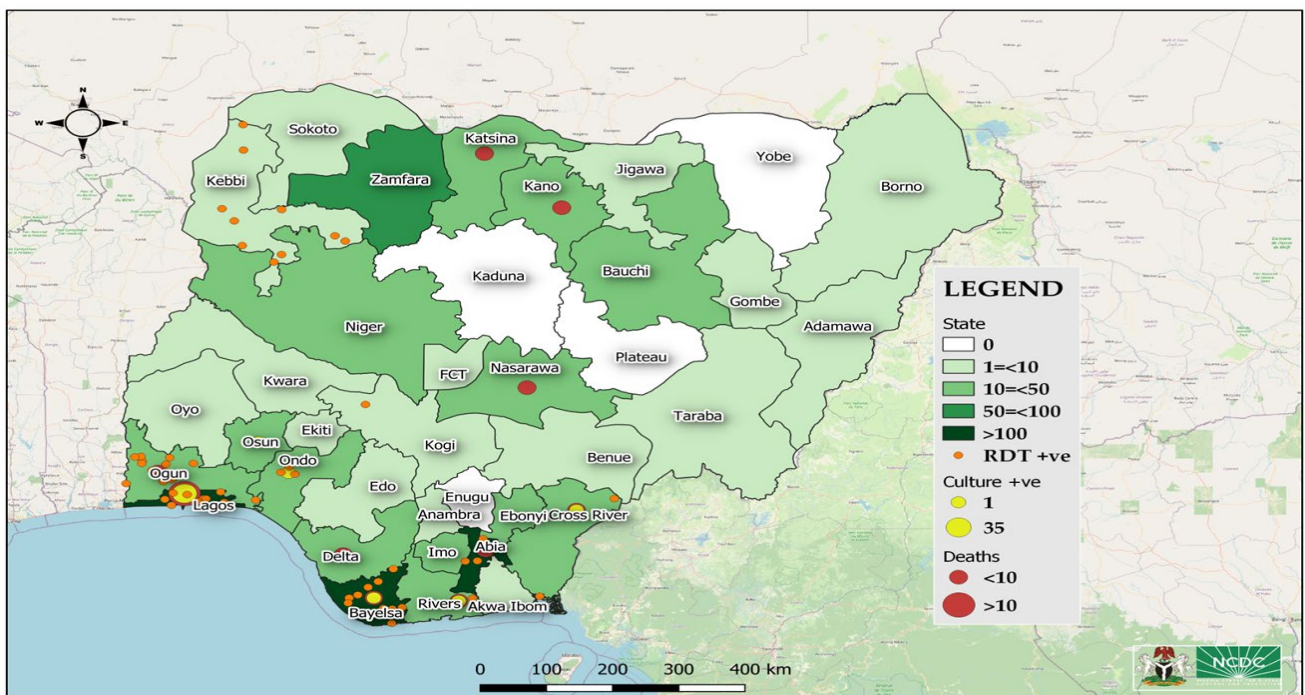


Fig. 8: Map of Nigeria showing states with RDT + Culture and suspected cases, weeks 1 - 27, 2024

Table 7. Summary table for Weekly & Cumulative number of Cholera Cases, for 2024

States	Reporting cases in 2024	State outbreak status*	Current week: (Week 27)					Cumulative (Week 1 - 27)					
			Cases		Deaths		Tests		Cases	Deaths	CFR	Tests	
			Cases	% change	Deaths	% change	RDT (%Pos)	Culture (%pos)				RDT (%Pos)	Culture (%pos)
1 Abia							109	4	3.7%	23 (13%)	6 (0%)		
2 Adamawa							2	-	0.0%		2 (0%)		
3 Akwa-Ibom	Active						10	-	0.0%		10 (0%)		
4 Anambra							1	-	0.0%		1 (0%)		
5 Bauchi	Active		2				54	1	1.9%				
6 Bayelsa	Active						476	2	0.4%	40 (28%)	20 (5%)		
7 Benue							6	-	0.0%				
8 Borno	Active						3	-	0.0%	1 (0%)			
9 Cross River							43	1	2.3%	25 (8%)	2 (50%)		
10 Delta	Active			▼ 100%			64	4	6.3%	25 (28%)			
11 Ebonyi	Active		6	▲ 500%	1	▲ 100%	110	1	0.9%	12 (8%)			
12 Edo							1	-	0.0%				
13 Ekiti							6	-	0.0%		2 (0%)		
14 Fct	Active			▼ 100%			2	-	0.0%		2 (0%)		
15 Gombe	Active						7	-	0.0%		6 (0%)		
16 Imo							28	-	0.0%	2 (0%)	7 (0%)		
17 Jigawa	Active			▼ 100%			8	-	0.0%		5 (0%)		
18 Kano	Active			▼ 100%		▼ 100%	18	2	11.1%	5 (0%)			
19 Katsina	Active			▼ 100%			88	3	3.4%	10 (0%)	6 (17%)		
20 Kebbi							2	-	0.0%				
21 Kogi	Active		2	▼ 33%			7	-	0.0%	7 (14%)	4 (75%)		
22 Kwara							2	-	0.0%		1 (0%)		
23 Lagos	Active		102	▼ 74%	2	▼ 82%	1,560	52	3.3%	1122 (3%)	709 (7%)		
24 Nasarawa							19	1	5.3%	1 (0%)	1 (0%)		
25 Niger	Active		2				15	-	0.0%	3 (0%)	2 (0%)		
26 Ogun	Active						21	1	4.8%	14 (86%)	1 (0%)		
27 Ondo							17	-	0.0%	6 (50%)	8 (13%)		
28 Osun							11	-	0.0%		10 (10%)		
29 Oyo	Active		2	▲ 100%			15	2	13.3%	7 (0%)	6 (0%)		
30 Rivers							37	8	21.6%	2 (50%)	2 (50%)		
31 Sokoto							2	-	0.0%				
32 Taraba	▶ #N/A						1	-	0.0%		1 (0%)		
33 Zamfara							64	-	0.0%				
National	16		116	▼ 75%	3	▼ 75%	107 (4%)	36 (6%)	2,809	82	2.9%	1305 (6%)	814 (7%)

*State is considered active if it has reported cases in recent 3 weeks from reporting week, Other states listed have reported cases during the year but not in recent 3 weeks

Table 8: Response activities

Pillar	Activities to date	Next steps
Coordination	<ul style="list-style-type: none"> Response is being coordinated by the national multi-sectoral TWG hosted at NCDC, in collaboration with the Federal Ministry of Health and Social Welfare (FMoH&SW), Federal Ministry of Water Resources (FMWR), Federal Ministry of Environment (FMEnvrt), National Primary Health Care Development Agency (NPHCDA) and Development Partners Activation of EOC Advisory developed and circulated Costed Incident action plan developed A team was deployed to Lagos to assess the situation and came up with gaps in the response 	<ul style="list-style-type: none"> The national multi-sectoral TWG will continue to coordinate the national response Continue sub-national level preparedness and response support Ongoing review of the National Cholera Plan

	<ul style="list-style-type: none"> National rapid response teams are being deployed to 7 high burden states. 	
Surveillance	<ul style="list-style-type: none"> Ongoing surveillance in all states through routine Integrated Disease Surveillance and Response (IDSR) and Event-Based Surveillance (EBS) Providing offsite/onsite support to states and follow up for daily reporting and progress with response activities 	<ul style="list-style-type: none"> Continue data collation and harmonisation Ongoing cholera surveillance evaluation across states
Case Management & IPC	<ul style="list-style-type: none"> Provided technical support and response commodities to affected states Finalization workshop held on the cholera case management guideline, treatment protocol and SOP harmonisation 	<ul style="list-style-type: none"> Continue providing technical support on case management and IPC to states Continue training of Health Care Workers (HCW) on management of cholera Continuous follow-up with states for updates and support
Laboratory	<ul style="list-style-type: none"> Collect samples of all water sources and food samples in all the affected LGAs. Inspect water production facilities and collect environmental samples. Supported ongoing testing across state-level laboratories at NCDC National Reference Laboratory (NRL), Abuja and CPHL Yaba-Lagos 	<ul style="list-style-type: none"> Ongoing sub-national level training of Laboratory Scientists on sample collection and analysis Ongoing finalization of cholera diagnostics guidelines and SOP
WASH	<ul style="list-style-type: none"> Hygiene promotion, provision of safe water, water chlorination, household disinfection and sensitization on dangers of open defecation ongoing in high-risk communities by WASH sector partners and Community Health Volunteers in the affected states Continuous construction of sanitation and hygiene facilities with boreholes in cholera hotspots Conducted WASH Sector review workshop 	<ul style="list-style-type: none"> Continue distribution of hygiene kits to affected states
Logistics	<ul style="list-style-type: none"> Essential response commodities are being distributed to all cholera-affected states 	<ul style="list-style-type: none"> Continue supporting affected states with essential response commodities
Vaccination (led by NPHCDA)	<ul style="list-style-type: none"> Epidemiological trends are being monitored to guide ICG requests for planned vaccination campaigns 	<ul style="list-style-type: none"> Continue monitoring epidemiological trends to guide ICG requests for planned vaccination campaigns
Risk communication	<ul style="list-style-type: none"> Cholera jingles are being aired in English and local languages 	<ul style="list-style-type: none"> Continue airing of cholera jingles and

Cholera Situation Report

Epi Week: 27, 2024

	<ul style="list-style-type: none">• Community social mobilisation, media interviews, distribution of Information, Education and Communication (IEC) materials and awareness campaigns ongoing in affected communities• Cholera advisory developed and circulated	<p>distribution of IEC materials</p> <ul style="list-style-type: none">• Continue media engagement meetings and training of journalists, other media professionals• Continued follow-up with states for updates on risk communication
State Response	Multi-sectoral State-level Emergency Operation Centres (EOCs) activated in Lagos State	Continue supporting state response activities

Challenges

- Difficulty in accessing some communities due to security concerns
- Open defecation in affected communities
- Lack of potable drinking water in some rural areas and urban slums
- Poor hygiene practices in most cholera-affected communities
- Inadequate health facility infrastructure and cholera commodities for management of patients (Ringer's lactate and ORS)
- Poor utilization of RDTs distributed to facilities and surveillance officers
- Inadequate trained personnel in states for case management
- Poor and inconsistent reporting from states

Next Steps

- Continue training on cholera surveillance, and hotspot mapping and develop state-level preparedness and response plans
- Maintain communication with and support to states for data reporting and response
- Continue advocacy to State Governments to increase funding for WASH infrastructure
- Continue distributing response commodities across states
- Build capacity for sample collection, transportation and laboratory diagnosis
- Continue cholera surveillance evaluation across states
- Scale up risk communications
- Continue review of the National Cholera Plan

Notes on this report

Data Source

Information for this disease was from routine case-based data and outbreak line lists retrieved by the National Cholera Technical Working Group

Case definitions

Suspected Case:

- Any patient aged ≥ 2 years with acute watery diarrhoea and severe dehydration or dying from acute watery diarrhoea with or without vomiting.
- In areas where a Cholera outbreak is declared, any person presenting with or dying from acute watery diarrhoea with or without vomiting.

Cholera Situation Report

Epi Week: 27, 2024

Confirmed Case: A suspected case in which *Vibrio cholerae* O1 or O139 has been isolated in the stool by culture.

Erratum

- *A backlog of suspected cases for epi week 1 - 4 (11) was added*
- *A backlog of suspected cases for epi week 5 - 8 (5) was added*
- *A backlog of suspected cases for epi week 9 - 12 (18) was added*
- *A backlog of suspected cases for epi week 13 - 17 (19) was added*
- *A backlog of suspected cases for epi week 18 - 22 (18) was added*
- *A backlog of suspected cases for epi week 23 - 26 (520) was added*

DATA AS REPORTED AND ACCURATE BY NCDC AS AT MIDNIGHT 7th JULY 2024