

YELLOW FEVER SITUATION REPORT

Serial Number: 011	November 2024 Monthly Sitrep
Epi Week:	45 – 49 as at 30 th November 2024
Reporting Month:	November 2024



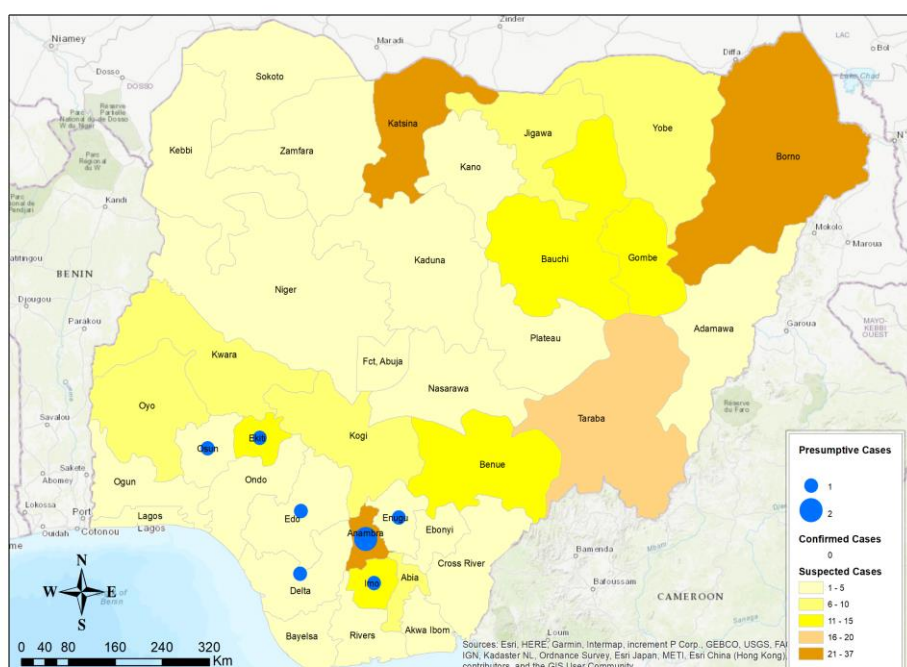
The information contained in this document is confidential, privileged and only for the intended recipient and may not be used, published, or redistributed to the public

REPORTING MONTH: NOVEMBER 2024

HIGHLIGHTS

REPORTING PERIOD: 1ST NOVEMBER 2024 – 30TH NOVEMBER 2024

- The Nigeria Centre for Disease Control & Prevention (NCDC) continues to monitor reports of yellow fever cases in Nigeria.
- A total of 278 suspected cases were reported from 159 Local Government Areas (LGAs) across 36 states and the FCT. The states include Abia (10), Adamawa (4), Akwa Ibom (3), Anambra (22), Bauchi (12), Bayelsa (2), Benue (15), Borno (37), Cross River (4), Delta (2), Ebonyi (4), Edo (2), Ekiti (11), Enugu (3), FCT, Abuja (2), Gombe (11), Imo (11), Jigawa (10), Kaduna (2), Kano (2), Katsina (28), Kebbi (3), Kogi (10), Kwara (9), Lagos (4), Nasarawa (3), Niger (1), Ogun (5), Ondo (4), Osun (5), Oyo (7), Plateau (4), Rivers (1), Sokoto (1), Taraba (17), Yobe (6), Zamfara (1).
- Eight (8)** Presumptive positive cases were reported from the Central Public Health Laboratory (CPHL), Yaba Lagos (2), University of Nigeria Teaching Hospital (UNTH) Enugu (4) and University of Benin Teaching Hospital (UBTH) Benin City (2). These cases were reported from: **Anambra (2)** [Idemili North (1), Onitsha North (1)], **Delta (1)** [Ughelli North (1)], **Edo (1)** [Ikpoba North (1)], **Ekiti (1)** [Ekiti East (1)], **Enugu (1)** [Nkanu West (1)], **Imo (1)** [Owerri North (1)] and **Osun (1)** [Oriade (1)].
- Three (3) inconclusive cases were recorded from CPHL Yaba Lagos (1) and University of Nigeria Teaching Hospital (UNTH) Enugu (2). These cases were from Anambra (2), and Osun (1).
- No** confirmed case was recorded within the reporting month.
- No** death was recorded from both suspected and confirmed cases in the reporting month.



278
SUSPECTED
CASES

36 + FCT
STATES WITH
SUSPECTED
CASES

0
CONFIRMED
CASES

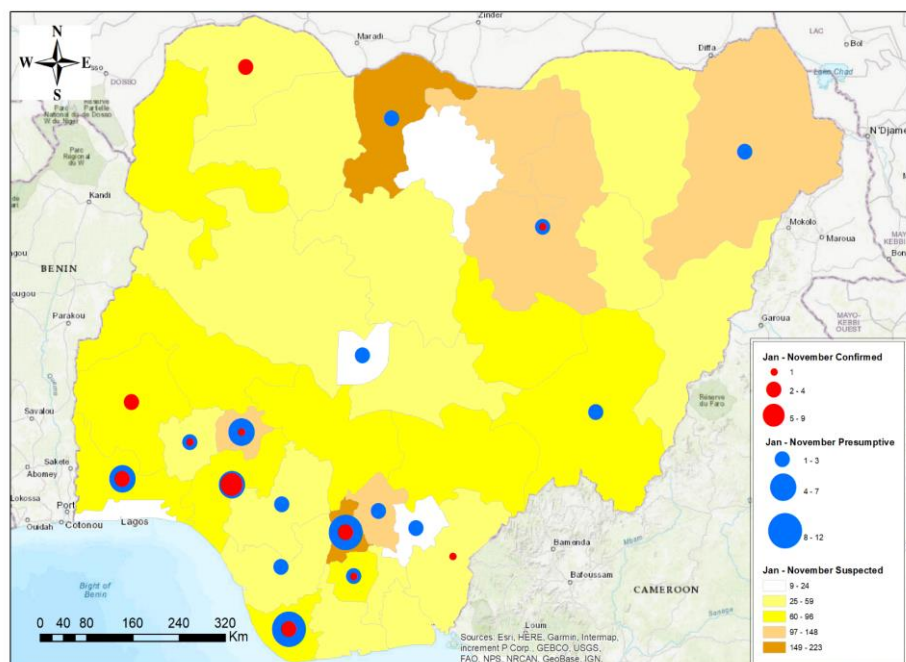
0
STATE WITH
CONFIRMED
CASES

0
STATES WITH
DEATHS IN
CONFIRMED
CASES

0
DEATHS IN
CONFIRMED
CASES

CUMULATIVE FOR 1ST JANUARY 2024 – 30TH NOVEMBER 2024

- Cumulatively from 1st January 2024 – 30th November 2024, a total of 2,641 suspected cases have been reported from 618 LGAs in 36 states including the FCT.
- The cases were reported from the following states: Abia (57), Adamawa (52), Akwa Ibom (40), Anambra (213), Bauchi (113), Bayelsa (74), Benue (76), Borno (142), Cross River (36), Delta (35), Ebonyi (21), Edo (59), Ekiti (107), Enugu (112), , FCT (9), Gombe (48), Imo (65), Jigawa (148), Kaduna (40), Kano (14), Katsina (223), Kebbi (77), Kogi (70), Kwara (87), Lagos (24), Nasarawa (51), Niger (41), Ogun (83), Ondo (78), Osun (52), Oyo (66), Plateau (96), Rivers (36), Sokoto (39), Taraba (77), Yobe (33) and Zamfara (47).
- A total of **Fifty-six (56)** presumptive positive and **thirty-nine (39)** inconclusive results were recorded from the Nigeria Laboratory networks.
- These **presumptive positives** were from CPHL Lagos (20), National Reference Laboratory (NRL) Gaduwa Abuja (3), UNTH Enugu (13), UBTH Benin (13), University of Maiduguri Teaching Hospital (UMTH), Maiduguri (6), Maitama District Hospital, (MDH) Abuja (1) while the **inconclusive** cases were from the UBTH Benin (3), UNTH Enugu (7), NRL, Abuja (1) and CPHL, Lagos (28). These cases were from: Anambra (4), Akwa Ibom (2), Bauchi (1), Ekiti (4), Enugu (2), Imo (1), Lagos (2), Ogun (3), Ondo (8), Osun (5), Oyo (6), Rivers (1). These samples have been shipped to IP Dakar for confirmation.
- Twenty-nine (29)** confirmed cases were recorded within the reporting period. These cases were from: Anambra (4), Bauchi (1), Bayelsa (4), Cross River (1), Ekiti (1), Imo (1), Ogun (3), Ondo (9), Osun (1), Oyo (2) and Sokoto (2).
- One (1)** death has been recorded from confirmed cases [**CFR = 3.4%**] and the case was reported from Bayelsa State
- Male to female ratio for suspected cases was **1.1:1** with males 1,390 (52.6%) and females 1251 (47.4%)
- Two thousand and sixty-nine (78.3%) of suspected cases were predominantly aged 30 years and below.
- Two hundred and ninety-six (11.2%) of 2,641 suspected cases received at least one dose of the yellow fever vaccine.
- The NCDC coordinates response activities through the National Multi-agency Yellow Fever Technical Working Group (YF TWG).



2,641

**SUSPECTED
CASES**

36 + FCT

**STATES
WITH
SUSPECTED
CASES**

29

**CONFIRMED
CASES**

11

**STATES WITH
CONFIRMED
CASES**

1

**DEATHS IN
CONFIRMED
CASES**

1

**STATES WITH
DEATHS IN
CONFIRMED
CASES**

Table 1: Summary of yellow fever cases in Nigeria from 1st January – 30th November 2024

State	# Suspected Cases	# LGAs with suspected cases	# LGAs with confirmed cases	Laboratory Results					Deaths	
				Samples positive (IgM) & Inconclusive in NG)	LGAs with positive (IgM) & Inconclusive in NG)	Confirmed Cases (PCR)	Confirmed Cases (IP Dakar)	Total Confirmed Cases	# Deaths among Confirmed Cases [CFR] (%)	# Deaths among All Cases [CFR](%)
Abia	57	13	-	-	-	-	-	-	-	-
Adamawa	52	17	-	-	-	-	-	-	-	-
Akwa Ibom	40	20	-	3	3	-	-	-	-	-
Anambra	213	21	4	13	7	-	4	4	-	-
Bauchi	113	17	1	2	2	-	1	1	-	-
Bayelsa	74	10	3	11	6	2	2	4	1	1
Benue	76	22	-	-	-	-	-	-	-	-
Borno	142	24	-	6	5	-	-	-	-	-
Cross River	36	16	1	-	-	-	1	1	-	-
Delta	35	17	-	1	1	-	-	-	-	-
Ebonyi	21	10	-	-	-	-	-	-	-	-
Edo	59	21	1	1	1	-	-	-	-	-
Ekiti	107	16	1	10	7	-	1	1	-	1
Enugu	112	15	-	4	1	-	-	-	-	1
FCT Abuja	9	4		1	1	-	-	-	-	-
Gombe	48	7	-	-	-	-	-	-	-	-
Imo	65	24	1	3	3	-	1`	1	-	-
Jigawa	148	25	-	-	-	-	-	-	-	-
Kaduna	40	13	-	-	-	-	-	-	-	-
Kano	14	10	-	-	-	-	-	-	-	-
Katsina	223	34	-	1	1	-	-	-	-	-
Kebbi	77	18	-	-	-	-	-	-	-	-
Kogi	70	18	-	-	-	-	-	-	-	-
Kwara	87	19	-	-	-	-	-	-	-	-
Lagos	24	14	-	2	2	-	-	-	-	-
Nasarawa	51	14	-	-	-	-	-	-	-	-
Niger	41	11	-	-	-	-	-	-	-	-
Ogun	83	18	3	7	5	-	3	3	-	-
Ondo	78	15	6	15	9	-	9	9	-	-
Osun	52	24	1	7	5	-	1	1	-	-
Oyo	66	25	2	7	6	-	2	2	-	-
Plateau	96	20	-	-	-	-	-	-	-	-
Rivers	36	16	-	1	1	-	-	-	-	-
Sokoto	39	11	2	-	-	-	2	2	-	-
Taraba	77	16	-	-	-	-	-	-	-	-
Yobe	33	11	-	-	-	-	-	-	-	-
Zamfara	47	12	-	-	-	-	-	-	-	-
TOTAL	2,641	618 (79.8%)	26 (3.3 %)	95 (3.6%)	66 (8.5%)	2 (0.1%)	27 (1.0%)	29 (1.1%)	1 (3.4%)	3 (0.1%)

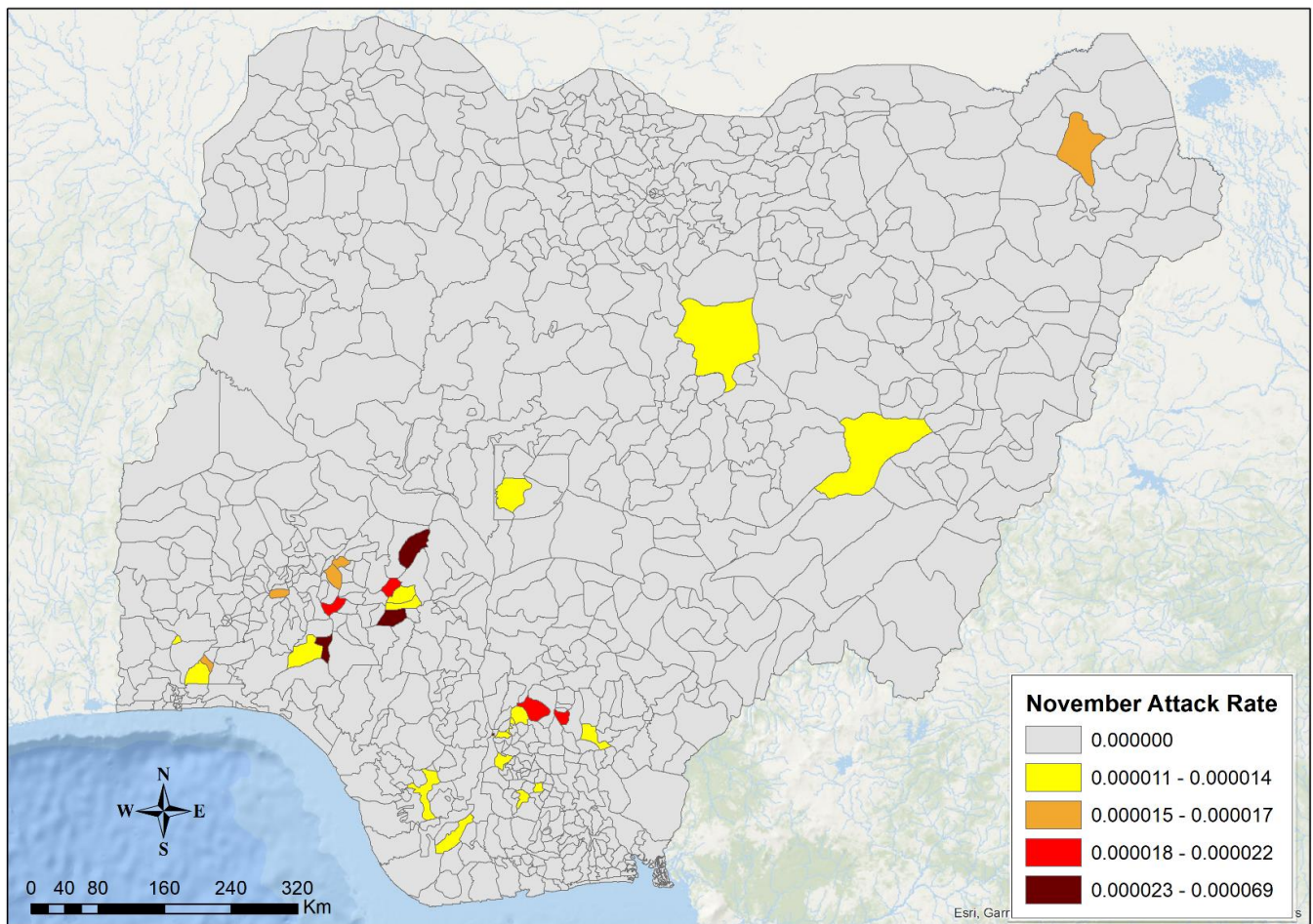


Figure 1: Map of Nigeria showing yellow fever outbreak attack rates in affected LGAs for November 2024

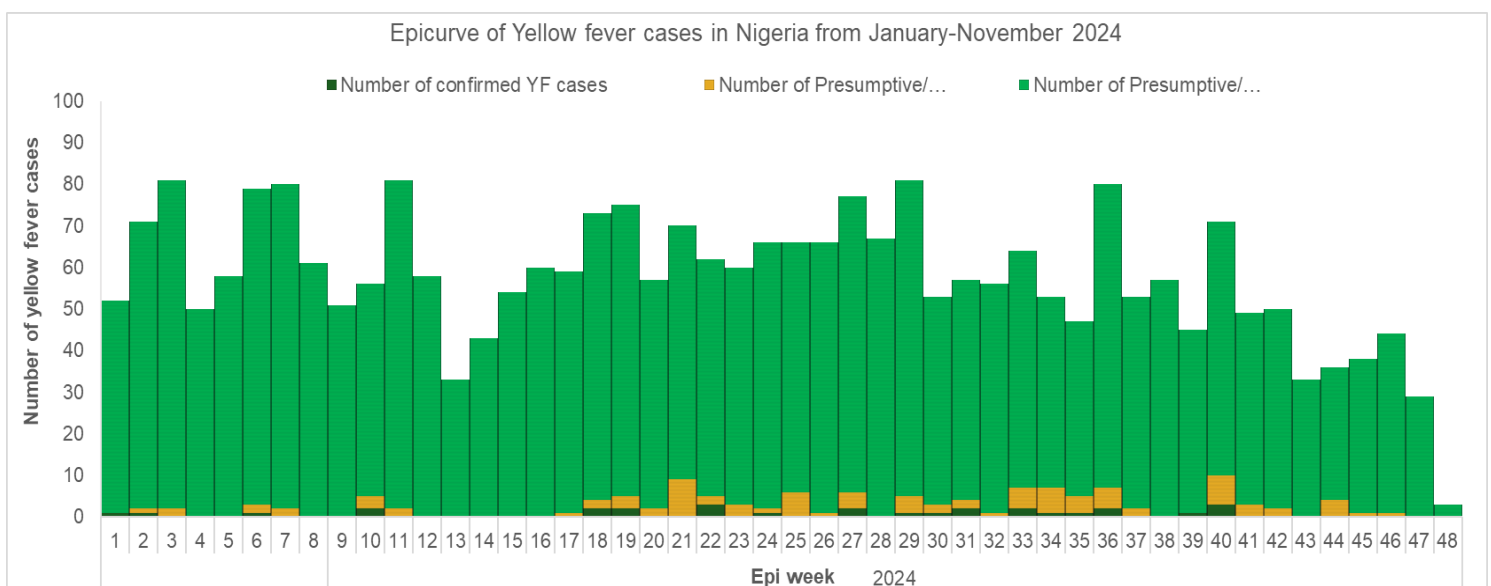


Figure 2: Epicurve of yellow fever cases in Nigeria from 1st January – 30th November 2024

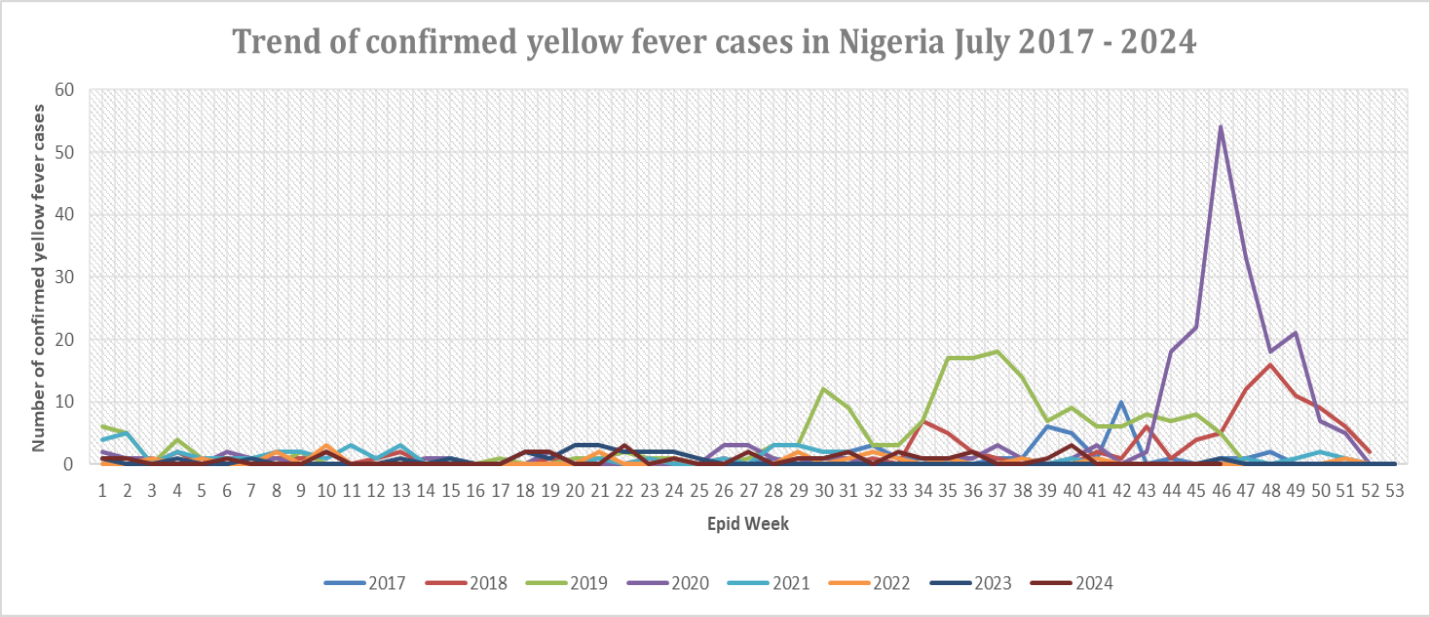


Figure 3: Trend of confirmed yellow fever cases in Nigeria 2017 – November 2024

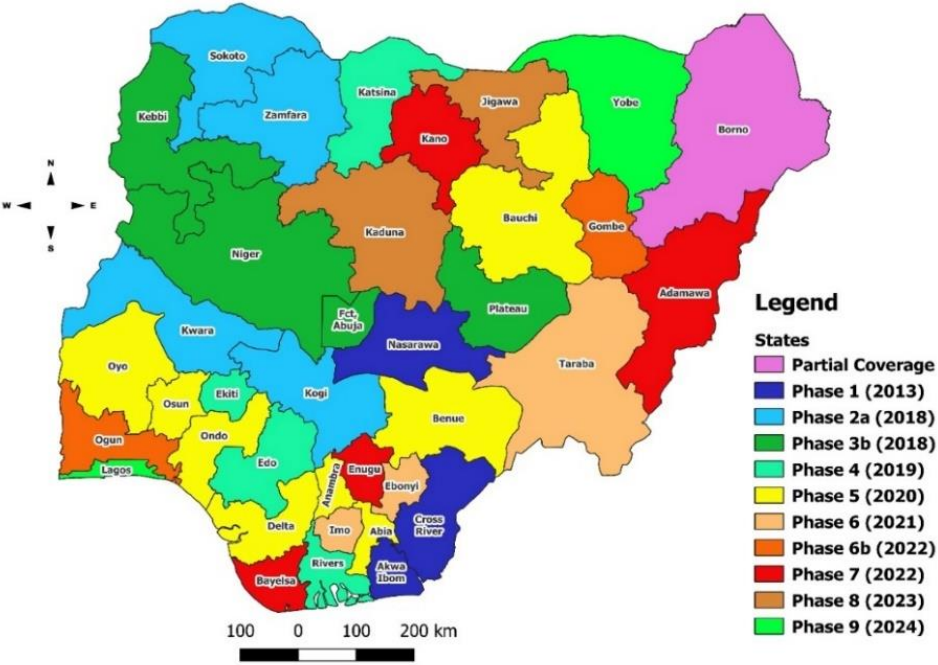


Figure 5: Map of Nigeria showing states and years of implementation of yellow fever preventive mass vaccination campaigns (PMVC) from 2013 – 2024

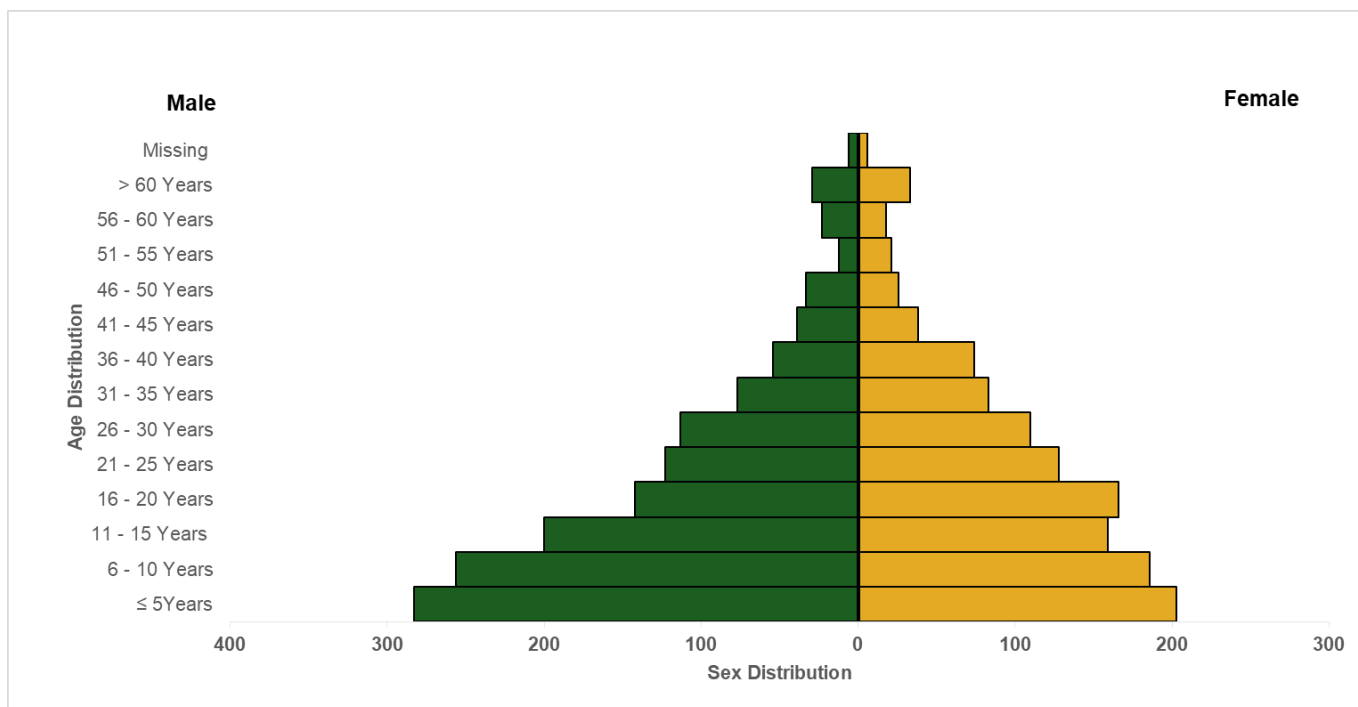


Figure 6: Age and sex distribution of yellow fever cases in Nigeria from January – November 2024

Partners



USAID
FROM THE AMERICAN PEOPLE



**Breakthrough
ACTION**
FOR SOCIAL & BEHAVIOR CHANGE

