

COVID-19 SITUATION REPORT

SITUATION REPORT 214

Tuesday, 29th September 2020



DATA AS REPORTED AND ACCURATE BY NCDC AS AT MIDNIGHT 29TH SEPTEMBER 2020

HIGHLIGHTS

- One hundred and eighty-seven (**187**) confirmed cases were reported in the last 24 hours from **13** states – Lagos (74), Rivers (25), Plateau (25), FCT (19), Gombe (19), Osun (10), Kaduna (5), Borno (3), Katsina (2), Ogun (2), Bayelsa (1), Edo (1) and Nasarawa (1).
- Forty-two (**42**) discharges have been reported in the last 24 hours in **eight** states – Rivers (12), Kaduna (8), Ekiti (6), FCT (5), Gombe (5), Lagos (3), Kano (2) and Osun (1).
- **No** death was reported in the last 24 hours.
- All **36** states in Nigeria, and the FCT, have reported a confirmed case.
- There are now over **one million** confirmed deaths due to COVID-19 globally.

SITUATION UPDATES

Total (New in the last 24 hours)

SAMPLES TESTED

514,730¹ (3,815)²

CONFIRMED CASES

58,647 (187)

AFFECTED STATES INCLUDING FCT

37

DISCHARGED CASES

49,937 (42)

CONFIRMED FATALITIES

1,111 (0) – 1.9% CFR

DEMOGRAPHICS

MALE – 37,310 (**64%**)

FEMALE – 21,337 (**36%**)

MOST AFFECTED AGE GROUP

31 - 40 (**27%**)

PERSONS OF INTEREST

27,594 (Total)

25,303 (91.7% - Exceeded Follow Up)

PROVENANCE

TRAVEL HISTORY – **1,001 (1.7%)**

CONTACTS – **15,525 (26.7%)**

UNKNOWN EXPOSURE – **42,121 (71.6%)**

GLOBAL UPDATES

TOTAL NUMBER OF CASES

33,249,563 (1,000,040 deaths)

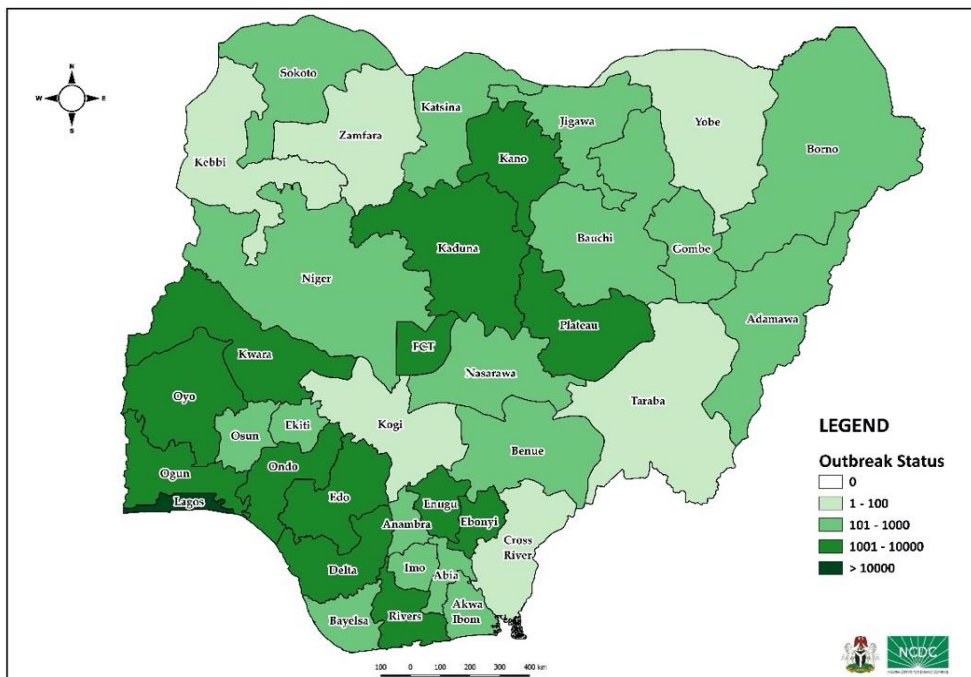
COUNTRIES & TERRITORIES AFFECTED

216*

*Excluding the 2 International Conveyance

STATE OF THE NATION

Figure 1: Map of Nigeria showing 36 states and FCT affected by COVID-19



¹-Includes 1,360 backlog of reported negative samples tested in the last 1 week in 1 laboratory: SAHEL (Katsina)- 1,360

²-Includes 140 travel tests from FCT and 54 Gene lab Lagos travel data

NB: Current lab data report does not include number of samples tested in Lagos testing laboratories (LUTH, LagosBioBank, Biologix, O2, Medburry, Clina, Synlab, Total, Clinix, Zaine Lab, VCare and Afriglobal); GH Takum (Taraba) and TSSH (Taraba) in the last 1 week

GENERAL FACT SHEET – DATA AS AT 29TH SEPTEMBER 2020

Table 1: States with reported laboratory-confirmed COVID-19 cases, recoveries, deaths and days since last reported case.

STATES	CONFIRMED CASES		DISCHARGED CASES		DEATHS		TOTAL ACTIVE CASES	TOTAL SAMPLES TESTED	DAYS SINCE LAST REPORTED CASE
	TOTAL	NEW	TOTAL	NEW	TOTAL	NEW			
Lagos	19,384	74	15,249	3	204	0	3,931	125,587	0
FCT	5,696	19	4,970	5	78	0	648	61,809	0
Plateau	3,425	25	2,572	0	33	0	820	31,121	0
Oyo	3,260	0	2,336	0	40	0	884	21,921	1
Edo	2,626	1	2,495	0	107	0	24	16,496	0
Kaduna	2,407	5	2,321	8	39	0	47	19,828	0
Rivers	2,395	25	2,241	12	59	0	95	30,991	0
Ogun	1,838	2	1,727	0	28	0	83	12,817	0
Delta	1,802	0	1,652	0	49	0	101	10,171	3
Kano	1,737	0	1,663	2	54	0	20	46,325	4
Ondo	1,631	0	1,545	0	36	0	50	7,954	2
Enugu	1,289	0	1,166	0	21	0	102	5,526	4
Ebonyi	1,040	0	1,007	0	30	0	3	5,972	3
Kwara	1,034	0	955	0	25	0	54	5,893	1
Abia	894	0	872	0	8	0	14	7,496	1
Gombe	883	19	747	5	25	0	111	17,730	0
Katsina	861	2	835	0	24	0	2	19,749	0
Osun	837	10	789	1	17	0	31	4,612	0
Borno	745	3	705	0	36	0	4	11,414	0
Bauchi	699	0	668	0	14	0	17	8,439	1
Imo	568	0	271	0	12	0	285	4,663	2
Benue	481	0	413	0	10	0	58	3,659	4
Nasarawa	450	1	325	0	13	0	112	4,117	0
Bayelsa	399	1	372	0	21	0	6	2,175	0
Jigawa	325	0	308	0	11	0	6	2,954	4
Ekiti	321	0	303	6	6	0	12	6,746	3
Akwa Ibom	288	0	274	0	8	0	6	2,714	12
Niger	259	0	232	0	12	0	15	3,722	7
Adamawa	240	0	198	0	17	0	25	2,179	1
Anambra	237	0	213	0	19	0	5	1,571	5
Sokoto	162	0	144	0	17	0	1	3,916	4
Taraba	95	0	73	0	6	0	16	788	18
Kebbi	93	0	84	0	8	0	1	867	32
Cross River	87	0	74	0	9	0	4	1,269	5
Zamfara	78	0	73	0	5	0	0	576	40
Yobe	76	0	62	0	8	0	6	720	3
Kogi	5	0	3	0	2	0	0	243	88
Total	58,647	187	49,937	42	1,111	0	7,599	514,730	

States, including FCT, are arranged in descending order by number of total confirmed cases and then alphabetical order

SELECTED CHARTS

Figure 2: Daily Epidemic Curve of Confirmed Cases (WK9 – WK40)

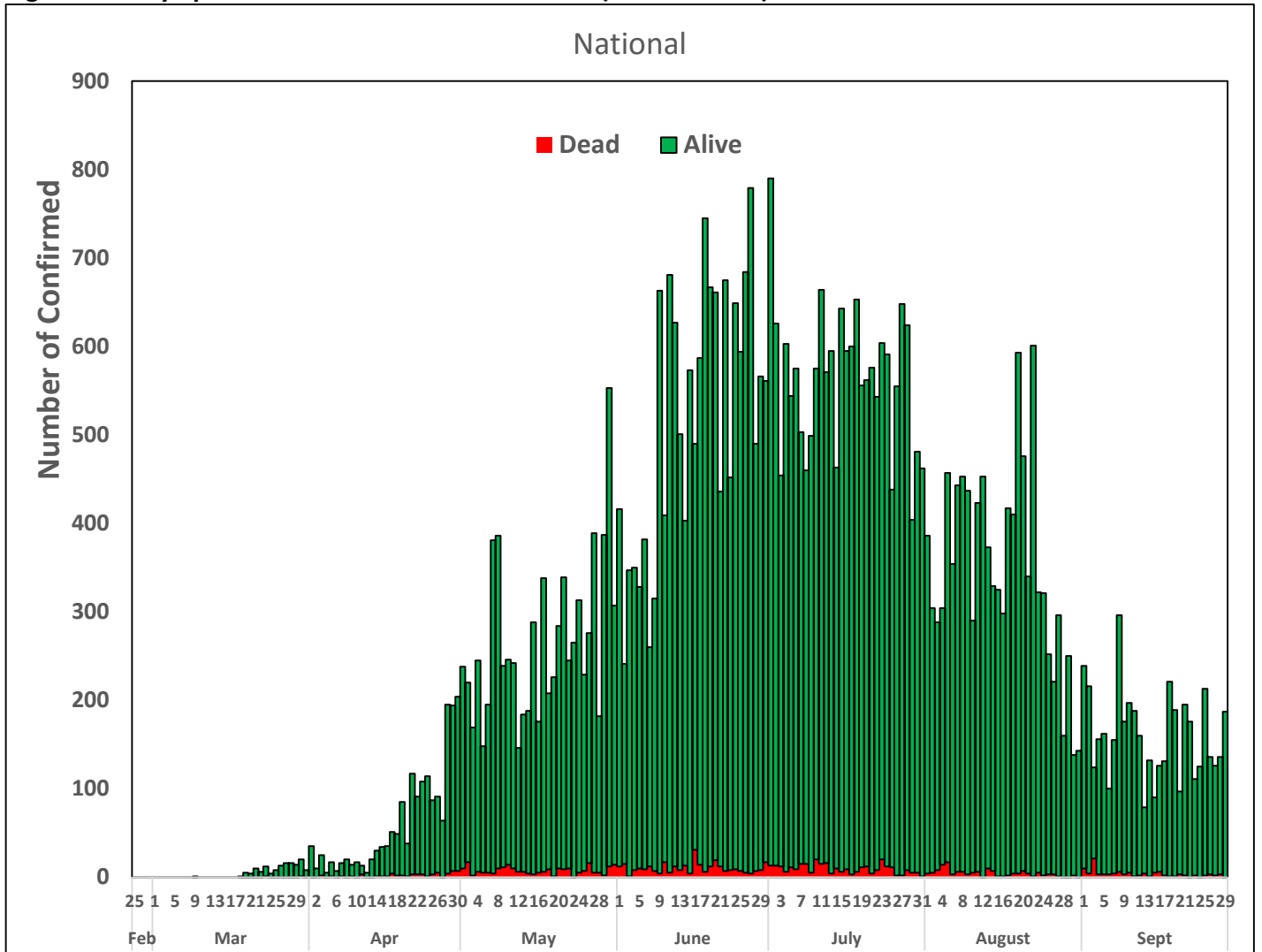
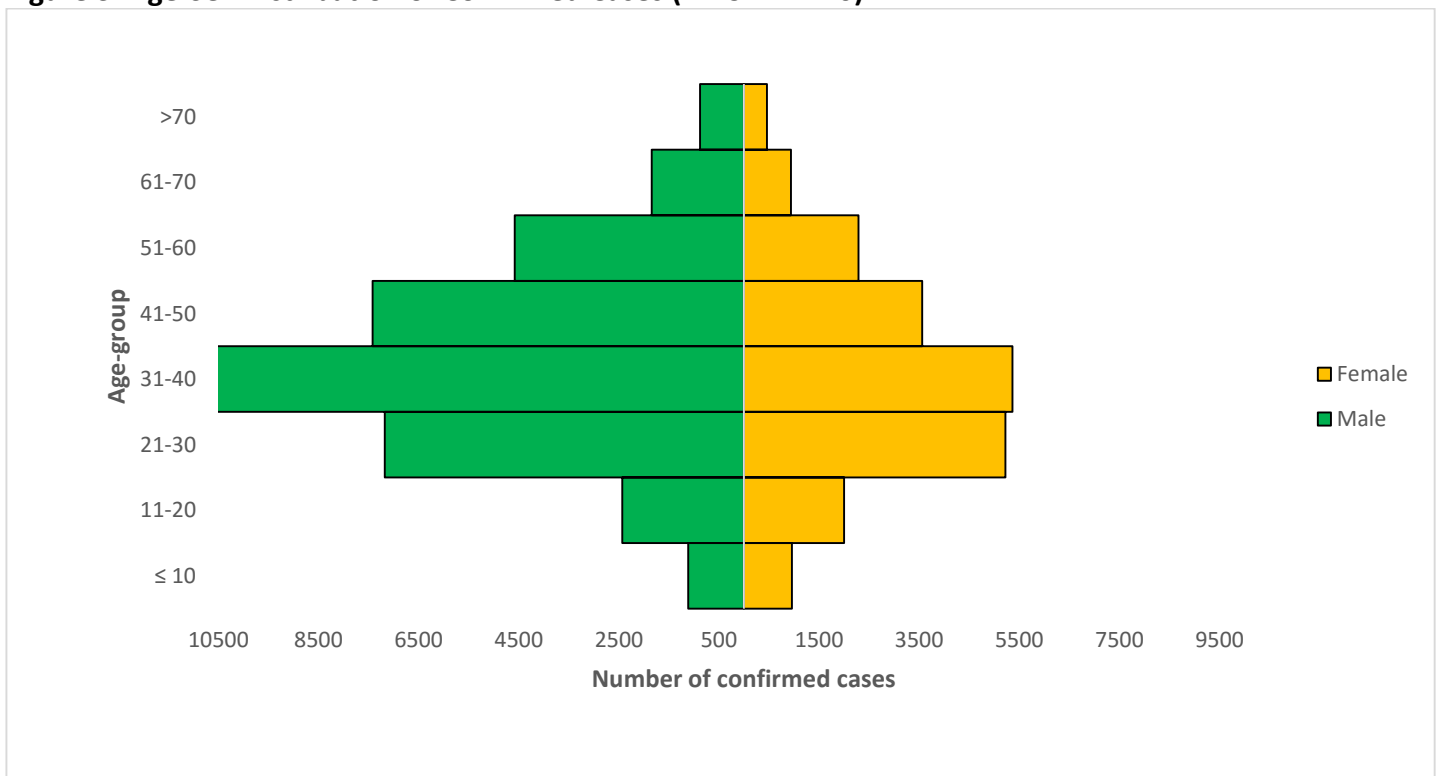


Figure 3: Age-Sex Distribution of Confirmed Cases (WK9 – WK40)



PREPAREDNESS

Since the confirmation of the first case on 27th February 2020, the NCDC has released advisories and statements to help Nigerians and affected groups in particular to respond to the pandemic

- NCDC published second interim guidance – Infection Prevention and Control: [Recommendations during health care provision for suspected and confirmed cases of COVID-19](#)
- NCDC recently published the first edition of a quick reference guide on setting up sample collection centre - [A step by step guide on setting up a sample collection centre](#)
- NCDC has launched an online course on [Infection, Prevention and Control \(IPC\) for COVID-19](#) NCDC eLearning platform
- Ahead of forthcoming elections in the country, NCDC has issued [Guidelines for Conducting Elections During the COVID-19 Outbreak in Nigeria](#).
- To protect our elders, and those with pre-existing medical conditions, NCDC has issued an [Advisory for Vulnerable Groups](#).
- NCDC has released [guidelines on the re-opening of places for worship](#).
- NCDC has released [Strategies to Improve Surveillance for COVID-19 Guidance for States](#)
- The Nigeria Police Force has released COVID-19 operational guidelines for the [Police and other Law Enforcement Agencies in Nigeria](#)
- Guidelines have been issued for the [safe transportation of remains of persons suspected or confirmed to have died of COVID-19](#)
- Information on diagnostics of the COVID-19 virus can be found in our [detailed FAQ document](#).
- To increase our testing capacity, NCDC has issued guidelines for the [integration of private labs](#).
- Guidelines for [businesses and employers](#) have been updated.
- NCDC has updated its [case definition](#) , [community case definition](#) and [case management guide](#).
- NCDC releases periodic [public health advisories](#) to Nigerians on the COVID-19 disease.
- To adhere to post-lockdown measures, NCDC has released an [advisory on the use of face masks](#), as well as information on the [Use of Cloth face masks](#) and [how to make your cloth face masks](#).
- NCDC has released guidelines for the [management of pregnant women and nursing mothers](#) during the pandemic.
- To address burials of loved ones who die from COVID-19, guidelines have been issued to advise on the [management of dead bodies](#).
- For health centres managing cases, the following documents have been released- a guideline for the [Rational Use of Personal Protective Equipment in the care of COVID-19 cases](#).
- As part of plans to increase the testing capacity of the country, the NCDC published a [National Strategy to Scale Up Access to Coronavirus Disease Testing in Nigeria](#) document.
- The Presidential Task Force has published policies and announcements on COVID-19 [available on the website of the Presidency](#) – including presidential addresses, task force updates and information on livelihood and economic support.

RESPONSE

On 28th February 2020, a multi-sectoral Emergency Operations Centre (EOC) was activated at Level 3 – the highest emergency level in Nigeria –led by NCDC in close coordination with the State Public Health EOCs (PHEOC).

- **Commissioned a new molecular laboratory at the Infectious Diseases Care Centre in the Abuja University Teaching Hospital (AUTH), Gwagwalada FCT**
- **Supportive supervision provided to set up triage areas across secondary health facilities in Ilorin West LGA, Kwara State**
- Provided technical support for the commencement of digitisation of negative laboratory results in Oyo, Ogun, Osun, Ekiti and Ondo States

- Optimised Polymerase Chain Reaction (PCR) laboratory for testing in Shell hospital Warri, Delta State
- Trained 1,150 Proprietary Patent Medicine Vendors (PPMV) and community pharmacists from 23 LGAs on Infection Prevention and Control (IPC) in Kaduna State
- All education materials can be found via www.covid19.ncdc.gov.ng