



Measles Situation Report

October 2025

Key Points

Table 1: Summary of the current week, cumulative Epi week, current year and comparison with the previous year

Reporting Period	Suspected cases	Confirmed cases	Deaths (Confirmed cases)	Case Fatality Ratio (CFR)	States and LGAs affected (Confirmed cases)
October 2025	122	14	0	0.0%	State(s): 8 LGA(s): 12
Jan to Oct 2025	26,313	19,165	153	0.8%	State(s): 36 + FCT LGA(s): 501
Jan to Oct 2024	19,120	9,728	77	0.8%	State(s): 36 + FCT LGA(s): 552

Highlights (key summary)

■ In October 2025:

- Edo (17), Kwara (13), Lagos (12), Osun (9), Taraba (9), and Akwa Ibom (9) accounted for 56.56% of the 122 suspected cases reported
- Of the suspected cases reported, 14 (11.57%) were confirmed (12 lab-confirmed & 0 epidemiologically linked, 2 clinically compatible), 50 (41.32%) were discarded & 57 (47.11%) were pending
- A total of 69 LGAs across 17 States reported at least one suspected case
- Zero (0) deaths were recorded from confirmed cases

■ From January – October 2025:

- Borno (7,967), Zamfara (4,773), Yobe (2,076), Bauchi (1,573), and Kebbi (1,327) accounted for 67.33% of the 26,313 suspected cases reported
- Of the suspected cases reported, 19,165 (72.38%) were confirmed (2,731 lab-confirmed, 1,975 epi-linked, and 14,459 clinically compatible), 6,258 (23.78%) were discarded, and 889 (3.38%) were pending classification
- The age group 9 - 59 months accounted for 9,385 (66.24%) of all confirmed cases
- A total of 153 deaths (CFR = 0.8%) were recorded among confirmed cases
- Up to 14,763 (77.03%) of the 19,165 confirmed cases did not receive any dose of measles vaccine ("zero doses")

■ Measles outbreaks as at October 31st 2025:

- From January to October 2025, a total of 187 LGAs across 27 States have recorded a measles outbreak

Situation Report

October 2025

- In October, 1 LGAs (Akoko South West) states in Ondo State have ongoing measles outbreak.
- Similarly, one (Eti Osa) LGAs across 5 states in Lagos State recorded new measles outbreak in October 2025.
- Lastly, 185 LGAs across 24 states have ended their outbreaks as at end of October 2025.

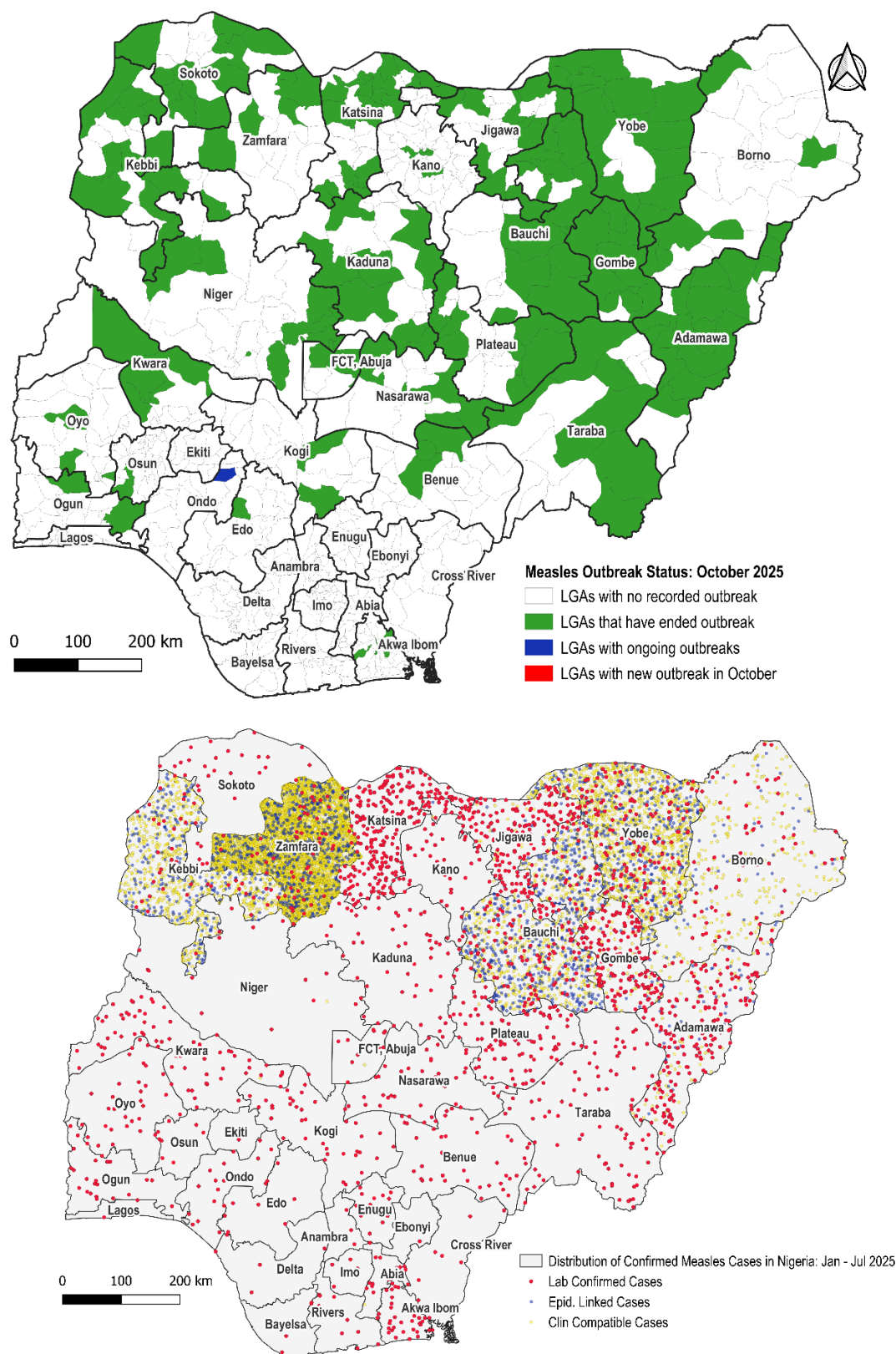


Figure 1: Map showing the measles outbreak status in Nigeria: October 2025

Figure 2: Map showing the distribution of confirmed measles in Nigeria: Jan-Oct 2025

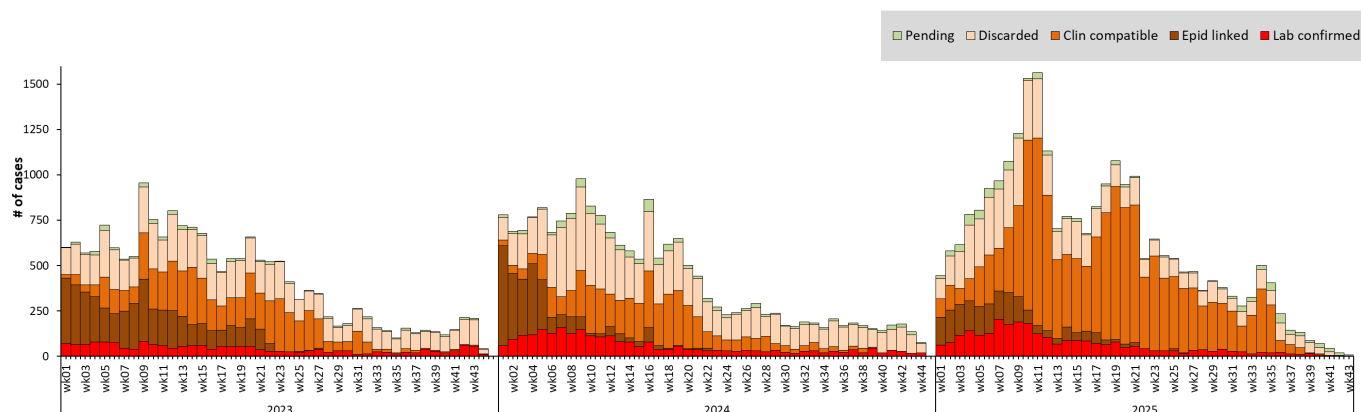


Figure 3: Epi-curve of confirmed measles cases in Nigeria, 2023 – 2025 (October)

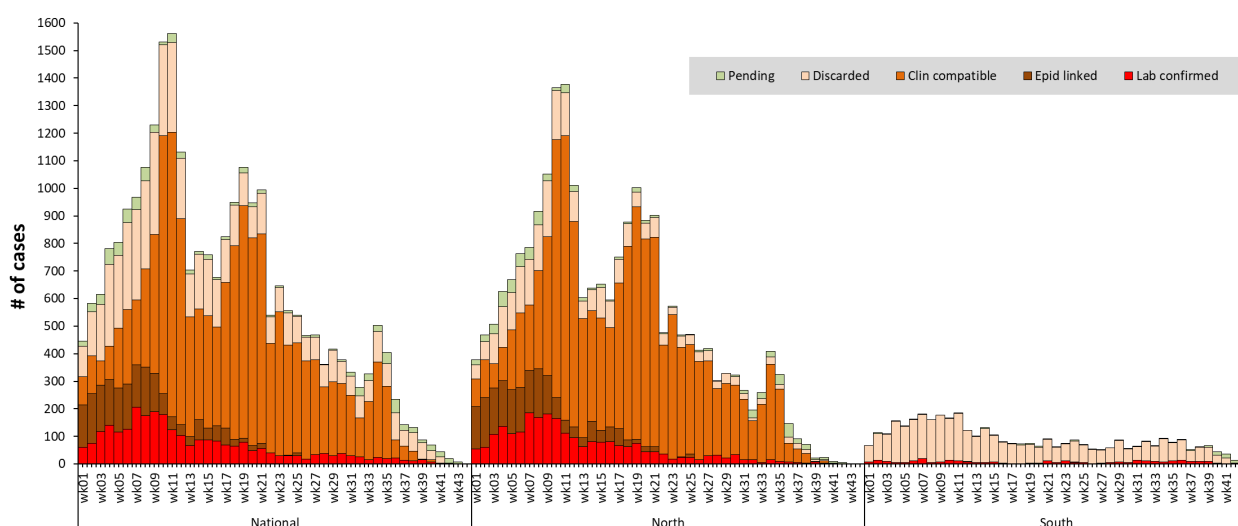


Figure 4: Epi-curve of measles cases in Nigeria (Northern vs Southern zone), Jan - October, 2025

Table 2: Distribution of key measles surveillance variables by states, October 2025

States	# Suspected cases	# Confirmed cases (%)	Classification of confirmed cases			% of confirmed cases aged 9-59 months	% of confirmed cases that are “zero doses”
			Lab. confirmed	Epid. linked	Clin. Compatible		
NORTH	22,427	18843 (84%)	2,412	1975	14456	67.5%	78.1%
Adamawa	499	312 (63%)	198	46	68	44.1%	100.0%
Bauchi	1,573	1403 (89%)	151	513	739	54.4%	91.2%
Benue	163	47 (29%)	47	0	0	44.7%	100.0%
Borno	7,967	7865 (99%)	71	184	7610	79.3%	84.6%
FCT, Abuja	51	12 (24%)	11	0	1	33.3%	100.0%
Gombe	423	233 (55%)	168	14	51	47.4%	86.3%
Jigawa	888	347 (39%)	302	13	32	49.0%	62.2%
Kaduna	325	139 (43%)	139	0	0	64.7%	36.7%
Kano	214	53 (25%)	53	0	0	69.8%	67.9%
Katsina	797	385 (48%)	385	0	0	48.1%	64.9%
Kebbi	1,327	1063 (80%)	127	335	601	51.8%	87.6%
Kogi	169	56 (33%)	56	0	0	55.4%	92.9%
Kwara	279	98 (35%)	97	0	1	44.8%	98.0%
Nasarawa	135	44 (33%)	43	0	1	45.5%	70.5%
Niger	69	16 (23%)	15	0	1	43.8%	100.0%
Plateau	343	106 (31%)	105	0	1	33.3%	93.4%
Sokoto	179	114 (64%)	114	0	0	63.7%	27.2%
Taraba	177	103 (58%)	103	0	0	43.7%	77.7%
Yobe	2,076	1768 (85%)	167	365	1236	59.0%	11.9%
Zamfara	4,773	4679 (98%)	60	505	4114	76.7%	88.0%
SOUTH	3,886	322 (8%)	319	0	3	34.6%	13.0%
Abia	262	26 (10%)	25	0	1	43.5%	53.8%
Akwa Ibom	383	54 (14%)	54	0	0	31.5%	1.9%
Anambra	158	5 (3%)	5	0	0	66.7%	40.0%
Bayelsa	120	8 (7%)	8	0	0	75.0%	0.0%
Cross River	172	25 (15%)	25	0	0	40.0%	0.0%
Delta	178	7 (4%)	7	0	0	28.6%	0.0%
Ebonyi	52	2 (4%)	2	0	0	0.0%	100.0%
Edo	138	16 (12%)	16	0	0	56.3%	0.0%
Ekiti	284	3 (1%)	3	0	0	66.7%	0.0%
Enugu	270	25 (9%)	24	0	1	25.0%	76.0%
Imo	164	10 (6%)	9	0	1	16.7%	40.0%
Lagos	308	6 (2%)	6	0	0	50.0%	0.0%
Ogun	377	32 (8%)	32	0	0	25.0%	0.0%
Ondo	314	23 (7%)	23	0	0	30.4%	0.0%
Osun	240	23 (10%)	23	0	0	26.1%	0.0%
Oyo	291	36 (12%)	36	0	0	38.9%	0.0%
Rivers	175	21 (12%)	21	0	0	23.8%	0.0%
TOTAL	26,313	19165 (73%)	2,731	1975	14459	66.7%	77.0%

Table 3: Trend of measles surveillance performance indicators, Jan – October, 2021 – 2025

Surveillance Performance Indicator	Target	2021 (October)	2022 (October)	2023 (October)	2024 (October)	2025 (October)
Annualized Measles Incidence	< 1/million population	37.0	103.1	53.4	43.2	78.5
Annualized non-measles febrile rash illness (NMFRI) rate	≥ 2/100,000 population	1.6	3.3	2.6	3.1	2.4
Proportion of reported measles cases from whom blood specimen was collected	≥ 80%	44.6%	44.8%	58.5%	68.5%	38.3%
Proportion of LGAs that reported at least 1 measles case with blood specimen collected	≥ 80%	99.0%	97.5%	98.5%	99.6%	99.0%
Annualized rate of investigation (with blood specimens) of suspected measles cases	> 1/100,000 population	2.2	6.0	3.5	4.5	3.7
Proportion of lab-confirmed measles cases	< 10%	25.0%	39.0%	21.5%	24.3%	31.8%
Proportion of serum specimens arriving at measles laboratory in good condition	≥ 90%	97.5%	99.8%	99.5%	97.1%	97.5%

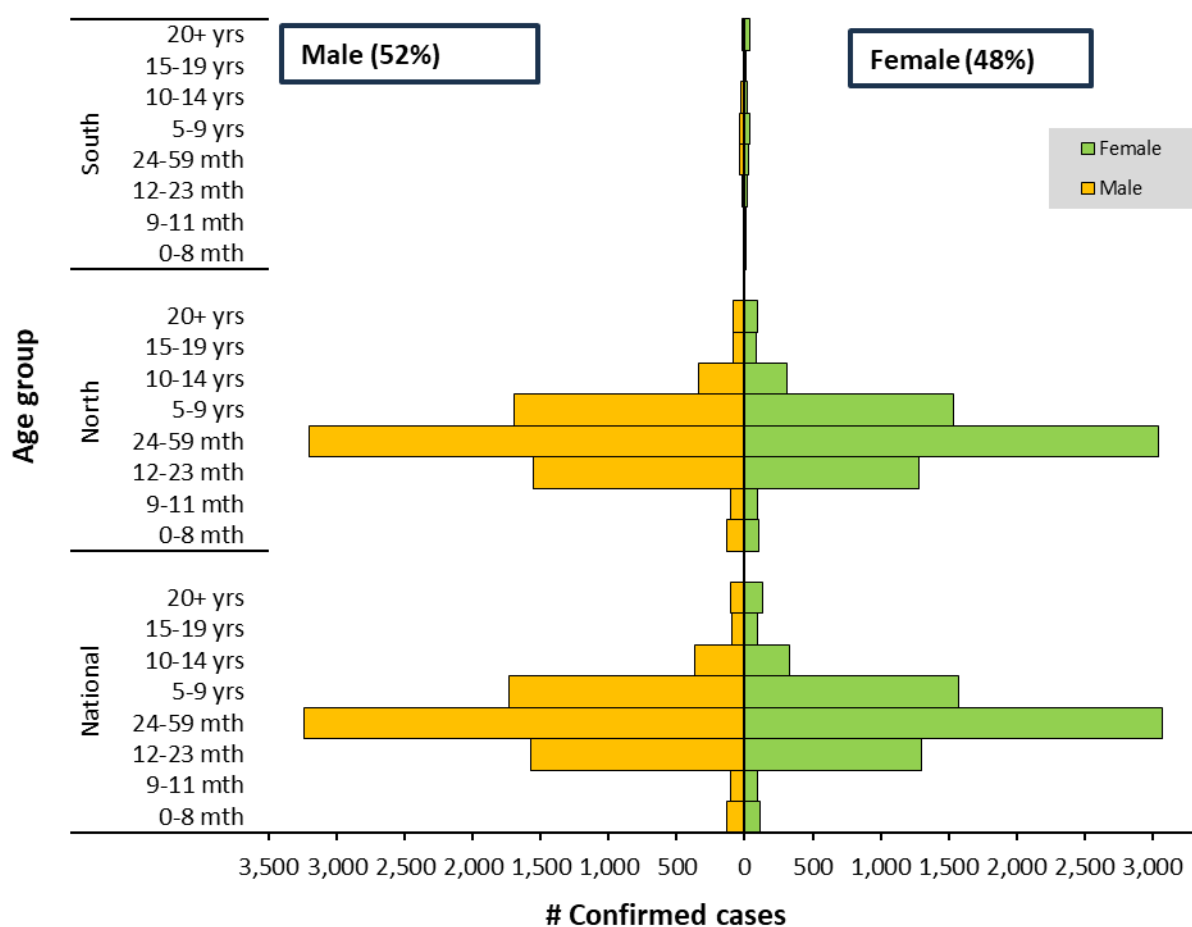


Figure 5: Age-sex distribution of confirmed measles cases in Nigeria (Northern and Southern zones), Jan - Oct, 2025

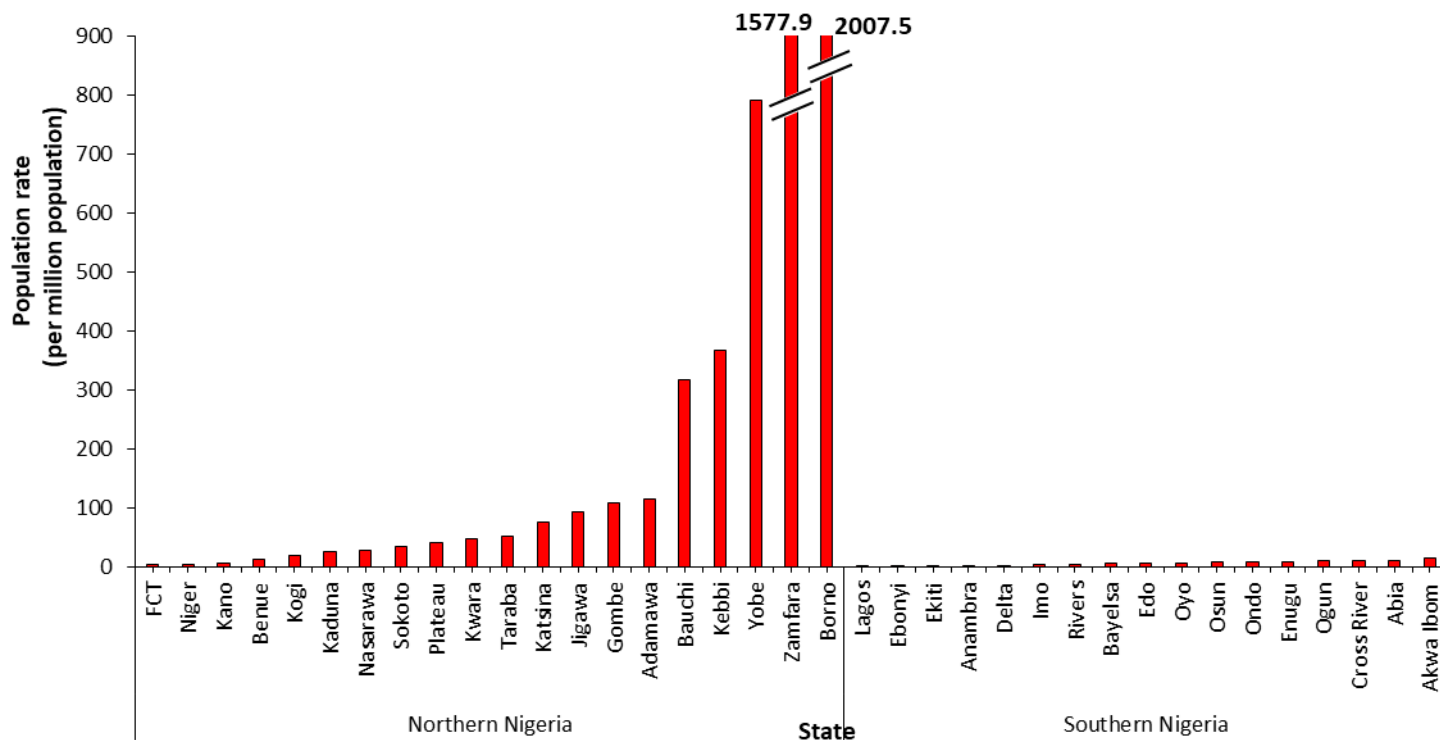


Figure 6: Incidence of confirmed measles cases in Nigeria (North and South), Jan - Oct, 2025

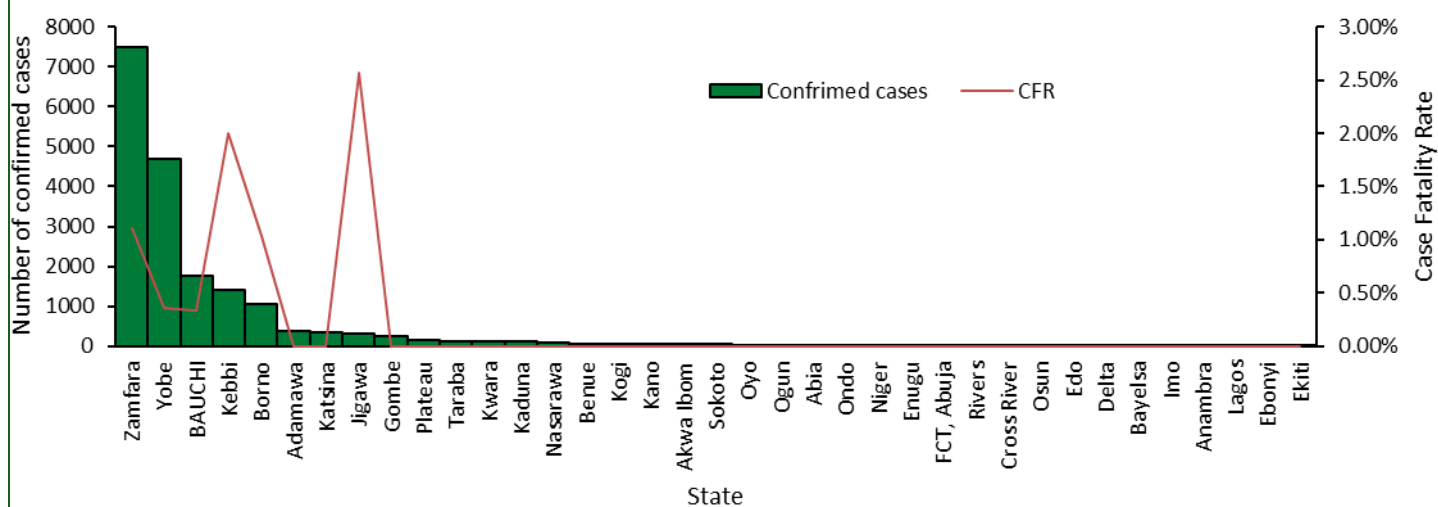


Figure 7. Confirmed cases and the corresponding Case Fatality Rate (CFR) by state, Jan – Oct, 2025

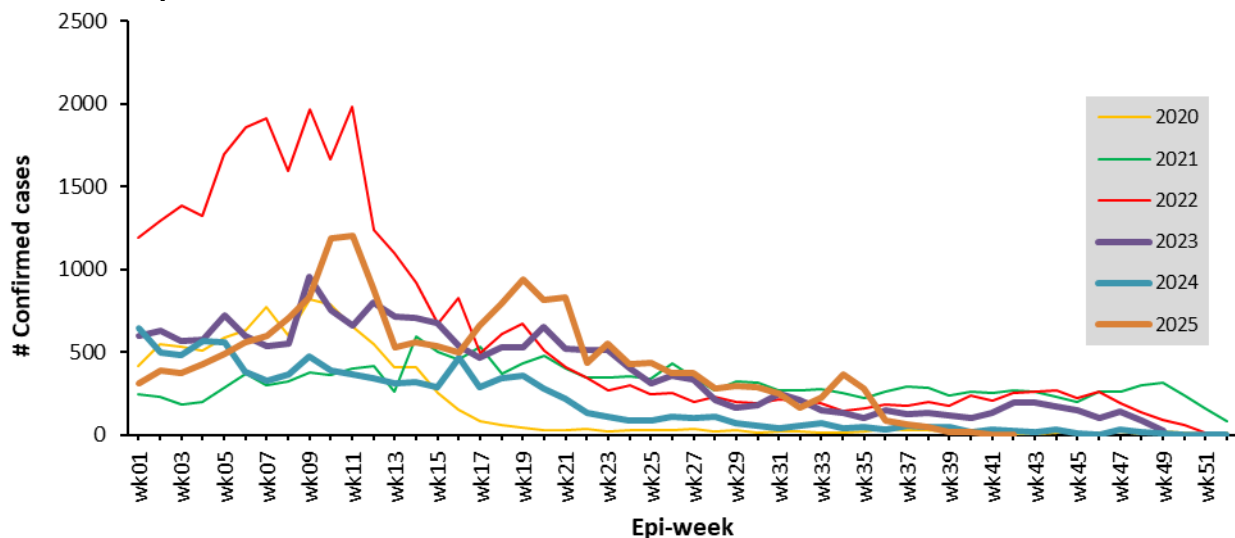


Figure 8: Trend of confirmed measles cases in Nigeria, 2020 – 2025 (epi-week 01 – 52).

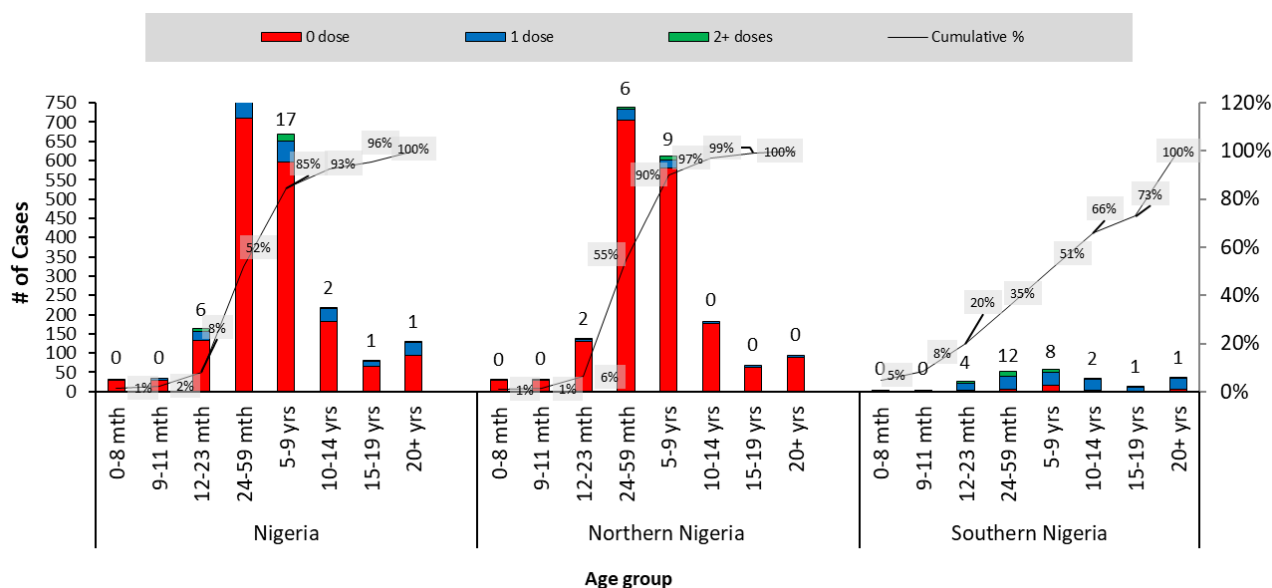


Figure 9: Vaccination status and age distribution lab confirmed measles cases in Nigeria (Northern vs Southern zone), Jan - Oct, 2025

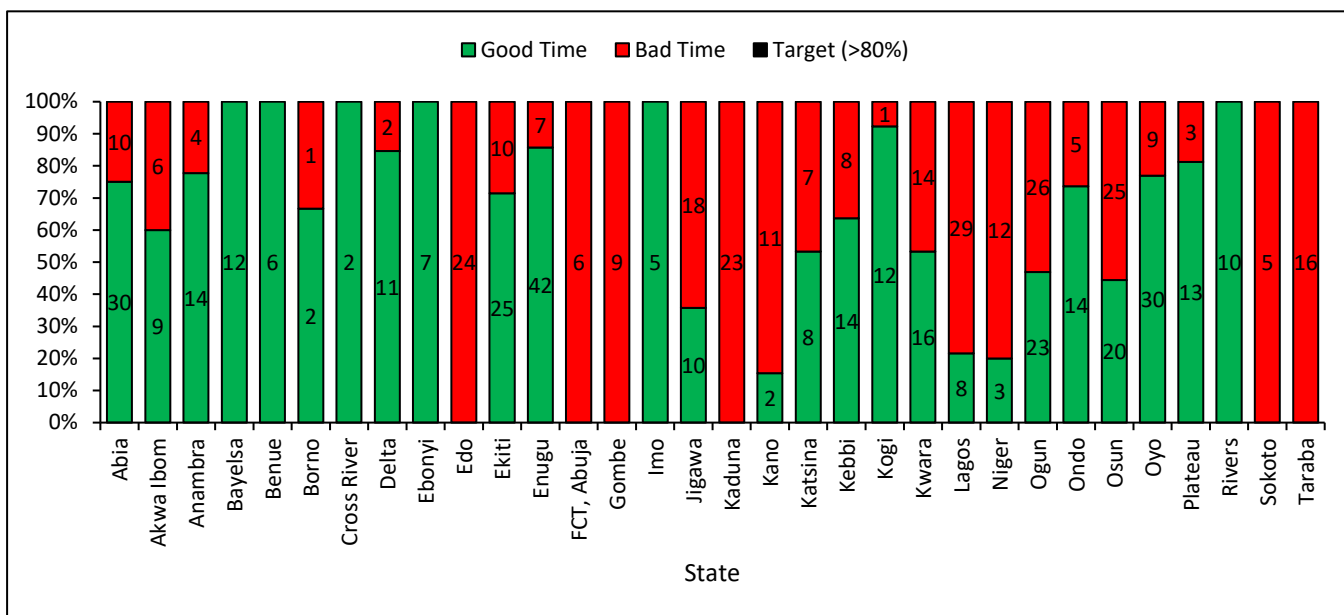


Figure 10: Proportion of measles samples reaching the laboratory in good time, Oct 2025

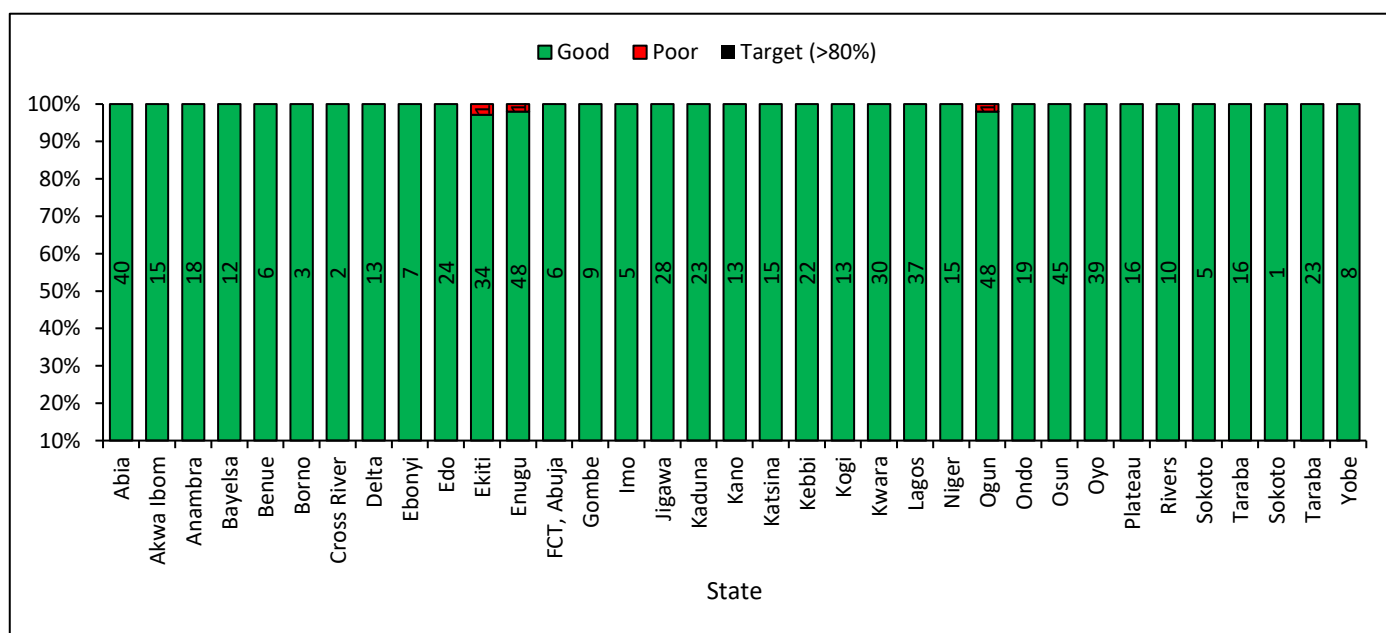


Figure 11: Proportion of measles samples getting to the lab in good condition, Oct 2025

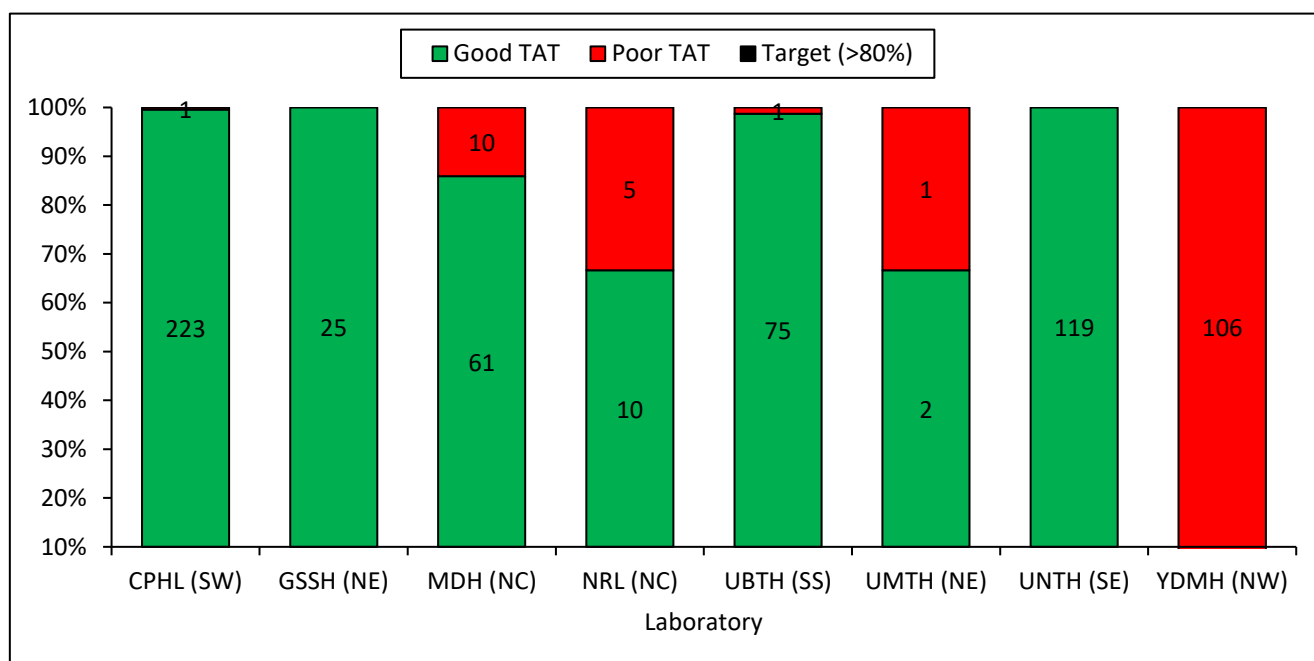


Figure 12: Proportion of measles samples with good turnaround time, October 2025

Data Source

Data Source: SORMAS, IDSR, Laboratory reports and WHO database

Key definition(s) of terminologies

suspected case: 5 or more cases in a health facility or LGA within 4 weeks

confirmed case: 3 or more positive cases in a health facility or LGA within 4 weeks.

CFR: Case fatality rate: Number of deaths in confirmed cases divided by the total number of confirmed cases multiplied by 100.

Key Indicators

number of suspected and confirmed cases, number of deaths, case fatality rate (CFR), attack rate, positivity rate, and percentage of cases investigated.

QUICK REFERENCE

Nigeria Centre for Disease Control and Prevention: www.ncdc.gov.ng

Disclaimer – *This situation report is based on the best available information reported. The NCDC is not responsible for information shared with third parties or any interpretation outside what is published.*