

COVID-19 SITUATION REPORT

SITUATION REPORT 199

Monday, 14th September 2020



DATA AS REPORTED AND ACCURATE BY NCDC AS AT MIDNIGHT 14th SEPTEMBER 2020

HIGHLIGHTS

- One hundred and thirty-two (**132**) confirmed cases were reported in the last 24 hours from **11** states – Lagos (52), Gombe (27), Plateau (17), Kwara (10), Enugu (9), Ogun (9), Katsina (3), Ekiti (2), Bauchi (1), Osun (1) and Rivers (1).
- One hundred and eighty-five (**185**) discharges have been reported in the last 24 hours in **14** states – Gombe (34), Plateau (31), Oyo (26), Abia (21), FCT (20), Adamawa (16), Ekiti (12), Bauchi (8), Ogun (5), Imo (4), Bayelsa (3), Anambra (2), Rivers (2) and Osun (1).
- **One** death was reported in the last 24 hours in **one** state – Gombe
- All **36** states in Nigeria, and the FCT, have reported a confirmed case.

SITUATION UPDATES

Total (New in the last 24 hours)

SAMPLES TESTED

443,987 (1,912)

CONFIRMED CASES

56,388 (132)

AFFECTED STATES INCLUDING FCT

37

DISCHARGED CASES

44,337 (185)

CONFIRMED FATALITIES

1,083 (1) – 1.9% CFR

DEMOGRAPHICS

MALE – 35,773 (63%)

FEMALE – 20,615 (37%)

MOST AFFECTED AGE GROUP

31 - 40 (26%)

PERSONS OF INTEREST

11,777 (Total)

11,675 (99.1% - Exceeded Follow Up)

PROVENANCE

TRAVEL HISTORY – 850 (2%)

CONTACTS – 14,147 (25%)

UNKNOWN EXPOSURE – 41,391 (73%)

GLOBAL UPDATES

TOTAL NUMBER OF CASES

28,918,900 (922,252 deaths)

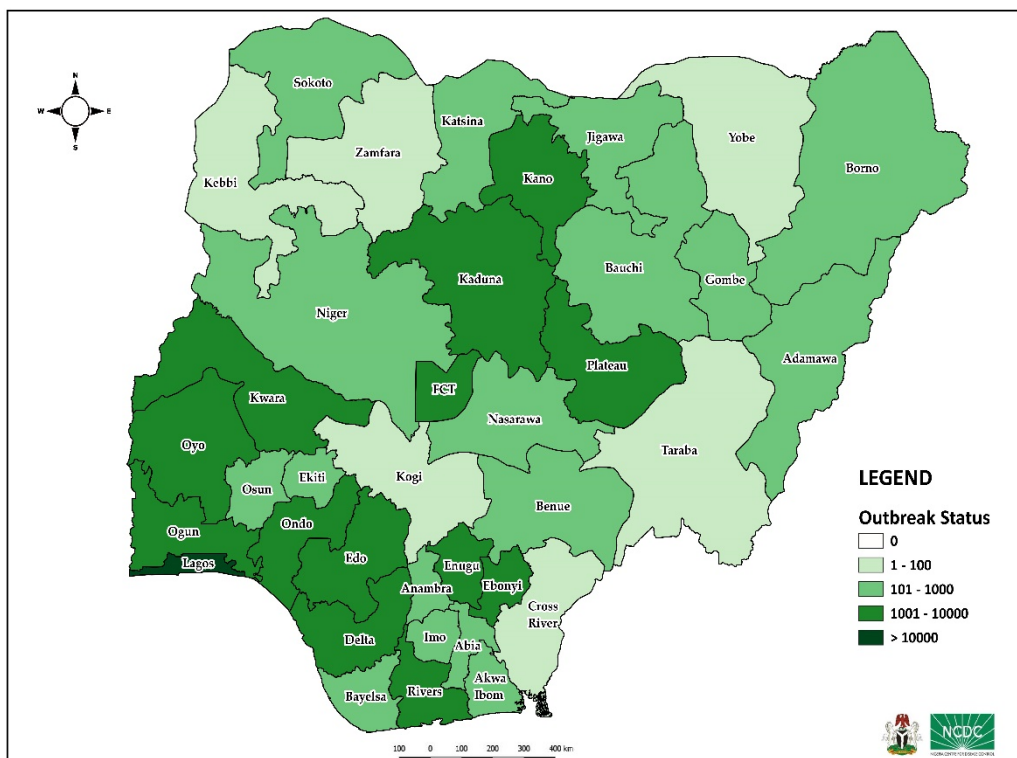
COUNTRIES & TERRITORIES AFFECTED

216*

*Excluding the 2 International Conveyance

STATE OF THE NATION

Figure 1: Map of Nigeria showing 36 states and FCT affected by COVID-19



GENERAL FACT SHEET – DATA AS AT 14th SEPTEMBER 2020

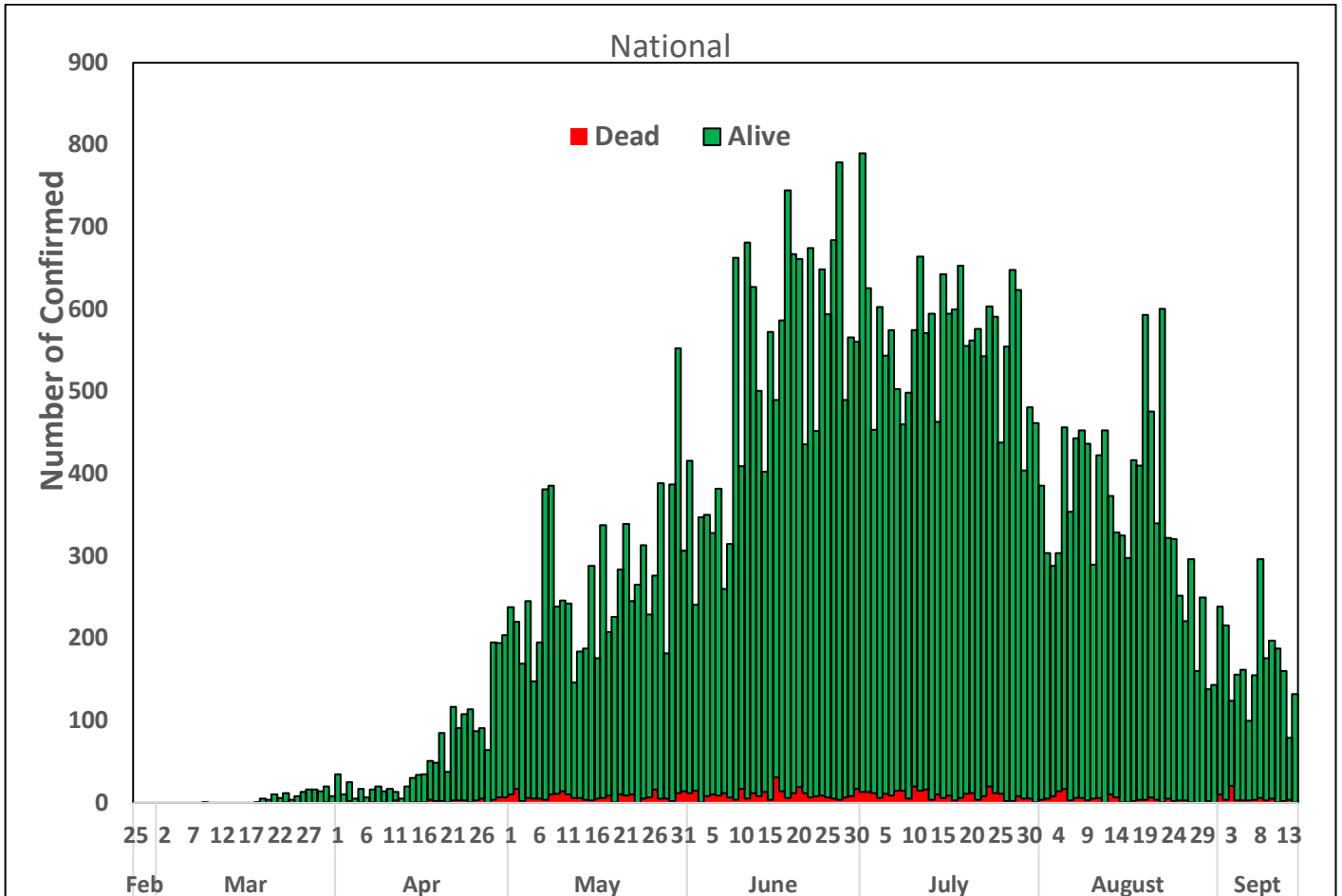
Table 1: States with reported laboratory-confirmed COVID-19 cases, recoveries, deaths and days since last reported case

STATES	CONFIRMED CASES		DISCHARGED CASES		DEATHS		TOTAL ACTIVE CASES	DAYS SINCE LAST REPORTED CASE
	TOTAL	NEW	TOTAL	NEW	TOTAL	NEW		
Lagos	18,663	52	15,245	0	203	0	3,215	0
FCT	5,447	0	1,684	20	75	0	3,688	1
Oyo	3,221	0	2,102	26	39	0	1,080	1
Plateau	3,115	17	2,041	31	31	0	1,043	0
Edo	2,610	0	2,420	0	100	0	90	2
Kaduna	2,279	0	2,161	0	33	0	85	1
Rivers	2,208	1	2,118	2	59	0	31	0
Delta	1,791	0	1,629	0	49	0	113	1
Ogun	1,748	9	1,680	5	28	0	40	0
Kano	1,732	0	1,626	0	54	0	52	1
Ondo	1,584	0	1,490	0	35	0	59	1
Enugu	1,232	9	1,088	0	21	0	123	0
Ebonyi	1,034	0	997	0	30	0	7	5
Kwara	1,002	10	794	0	25	0	183	0
Katsina	843	3	457	0	24	0	362	0
Abia	828	0	792	21	8	0	28	2
Osun	805	1	763	1	17	0	25	0
Gombe	773	27	677	34	24	1	72	0
Borno	741	0	703	0	36	0	2	14
Bauchi	680	1	656	8	14	0	10	0
Imo	546	0	216	4	12	0	318	3
Benue	467	0	401	0	9	0	57	2
Nasarawa	446	0	298	0	12	0	136	4
Bayelsa	393	0	370	3	21	0	2	4
Jigawa	322	0	308	0	11	0	3	60
Ekiti	302	2	267	12	5	0	30	0
Akwa Ibom	286	0	251	0	8	0	27	1
Niger	244	0	216	0	12	0	16	10
Anambra	231	0	184	2	19	0	28	1
Adamawa	230	0	196	16	15	0	19	5
Sokoto	159	0	142	0	17	0	0	14
Taraba	95	0	73	0	6	0	16	3
Kebbi	93	0	84	0	8	0	1	17
Cross River	83	0	73	0	8	0	2	11
Zamfara	78	0	73	0	5	0	0	25
Yobe	72	0	59	0	8	0	5	2
Kogi	5	0	3	0	2	0	0	73
Total	56,388	132	44,337	185	1,083	1	10,968	

States, including FCT, are arranged in descending order by number of total confirmed cases and then alphabetical order

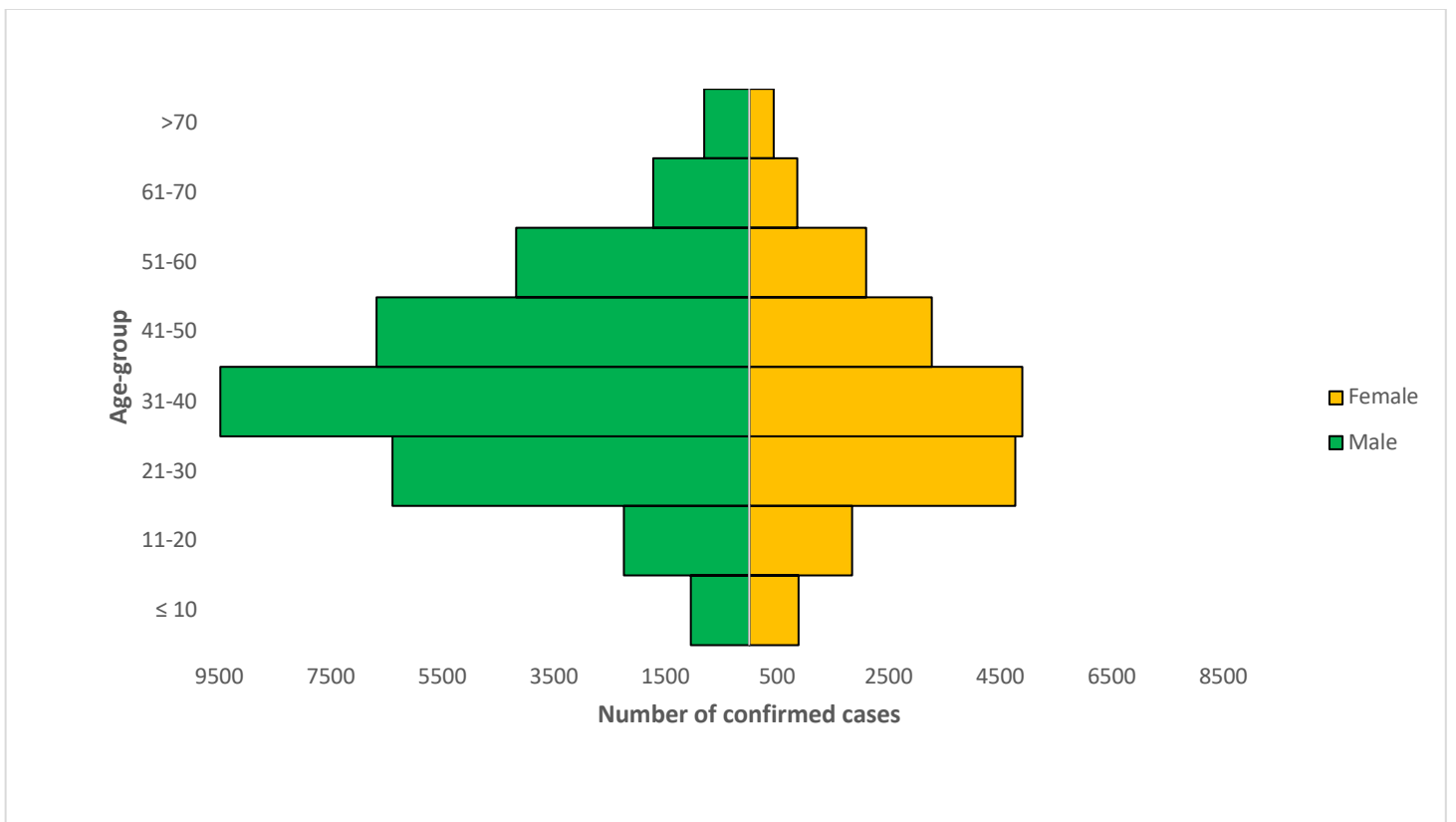
SELECTED CHARTS

Figure 2: Daily Epidemic Curve of Confirmed Cases (WK9 – WK38)



Note: The above chart is based on daily sample collection which has reduced in the last 4 weeks

Figure 3: Age-Sex Distribution of Confirmed Cases (WK9 – WK38)



PREPAREDNESS

Since the confirmation of the first case on 27th February 2020, the NCDC has released advisories and statements to help Nigerians and affected groups in particular to respond to the pandemic

- NCDC recently published the first edition of a quick reference guide on setting up sample collection centre - [A step by step guide on setting up a sample collection centre](#)
- NCDC has launched an online course on [Infection, Prevention and Control \(IPC\) for COVID-19](#) NCDC eLearning platform
- Ahead of forthcoming elections in the country, NCDC has issued [Guidelines for Conducting Elections During the COVID-19 Outbreak in Nigeria](#).
- To protect our elders, and those with pre-existing medical conditions, NCDC has issued an [Advisory for Vulnerable Groups](#).
- NCDC has released [guidelines on the re-opening of places for worship](#).
- NCDC has released [Strategies to Improve Surveillance for COVID-19 Guidance for States](#)
- The Nigeria Police Force has released COVID-19 operational guidelines for the [Police and other Law Enforcement Agencies in Nigeria](#)
- Guidelines have been issued for the [safe transportation of remains of persons suspected or confirmed to have died of COVID-19](#)
- Information on diagnostics of the COVID-19 virus can be found in our [detailed FAQ document](#).
- To increase our testing capacity, NCDC has issued guidelines for the [integration of private labs](#).
- Guidelines for [businesses and employers](#) have been updated.
- NCDC has updated its [case definition](#) , [community case definition](#) and [case management guide](#).
- NCDC releases periodic [public health advisories](#) to Nigerians on the COVID-19 disease.
- To adhere to post-lockdown measures, NCDC has released an [advisory on the use of face masks](#), as well as information on the [Use of Cloth face masks](#) and [how to make your cloth face masks](#).
- NCDC has released guidelines for the [management of pregnant women and nursing mothers](#) during the pandemic.
- To address burials of loved ones who die from COVID-19, guidelines have been issued to advise on the [management of dead bodies](#).
- For health centres managing cases, the following documents have been released- a guideline for the [Rational Use of Personal Protective Equipment in the care of COVID-19 cases](#).
- As part of plans to increase the testing capacity of the country, the NCDC published a [National Strategy to Scale Up Access to Coronavirus Disease Testing in Nigeria](#) document.
- The Presidential Task Force has published policies and announcements on COVID-19 [available on the website of the Presidency](#) – including presidential addresses, task force updates and information on livelihood and economic support.

RESPONSE

On 28th February 2020, a multi-sectoral Emergency Operations Centre (EOC) was activated at Level 3 – the highest emergency level in Nigeria –led by NCDC in close coordination with the State Public Health EOCs (PHEOC).

- **Dissemination draft guidelines, protocols and checklists with state response coordination teams for preparation and engagement with respective state education ministries and stakeholders towards school re-opening**
- **Ongoing biosafety training for laboratory scientists from six facilities in the NCDC COVID-19 diagnostic networks supported by partners**
- **Trained senior officers of the Nigeria Security and Civil Defence Corps (NSCDC) to be deployed for the upcoming elections in Edo & Ondo states on IPC measures**
- **Engaged with technical assistants deployed to states to support states risk communication teams on the use of risk communication needs assessment and reporting tools**

- Commenced additional training of 18 laboratory scientists on the use of the Polymerase Chain Reaction (PCR) equipment in Gombe State
- Deployed additional response materials and consumables to State Rapid Response Teams (RRT) in Nasarawa State
- Conducted training of correctional facilities staff on how to deliver key messages using physical distancing techniques
- All education materials can be found via www.covid19.ncdc.gov.ng