

# COVID-19 SITUATION REPORT

## SITUATION REPORT 64

Saturday, 02<sup>nd</sup> May 2020



DATA AS REPORTED AND ACCURATE BY NCDC by Midnight 2<sup>nd</sup> May 2020

### HIGHLIGHTS

- Two hundred and twenty (**220**) cases were reported in the last 24 hours in nineteen states – Lagos(62), FCT(52), Kaduna(31), Sokoto(13), Kebbi(10), Yobe (9), Borno (6), Edo(5), Bauchi(5), Gombe(4), Enugu(4), Oyo(4), Zamfara(3), Nasarawa(2), Osun(2), Ebonyi(2), Kwara (2), Kano(2) and Plateau(2)
- No new state recorded a confirmed COVID-19 case in the last 24 hours. The total number of states including FCT that have reported at least one confirmed case in Nigeria is still **35** (34 states + FCT)
- **Thirty-four** cases were discharged in the last 24 hours in four states – Lagos (22), Kano (7), Osun (4), and Ogun (1)
- **Seventeen** deaths were recorded in the last 24 hours in seven states – Borno (5), Katsina (4), Kano (3), Lagos (2), Ogun (1), Sokoto (1) and Yobe (1)
- Two cases previously reported in Katsina were repeat tests and have been removed
- NCDC launched COVID19 dashboard to track cases in Nigeria with data on individual states including FCT  
[www.covid19.ncdc.gov.ng/gis/](http://www.covid19.ncdc.gov.ng/gis/)

### SITUATION UPDATES

Total (New in the last 24 hours)

SAMPLES TESTED  
**17566 (770)**

CONFIRMED CASES  
**2388 (220)**

AFFECTED STATES INCLUDING FCT  
**35 (0)**

DISCHARGED CASES  
**385 (34)**

CONFIRMED FATALITIES  
**85 (17) – 4% CFR**

DEMOGRAPHICS  
MALE – 1648 (69%)  
FEMALE – 740 (31%)

MOST AFFECTED AGE GROUP  
31 - 40 (23%)

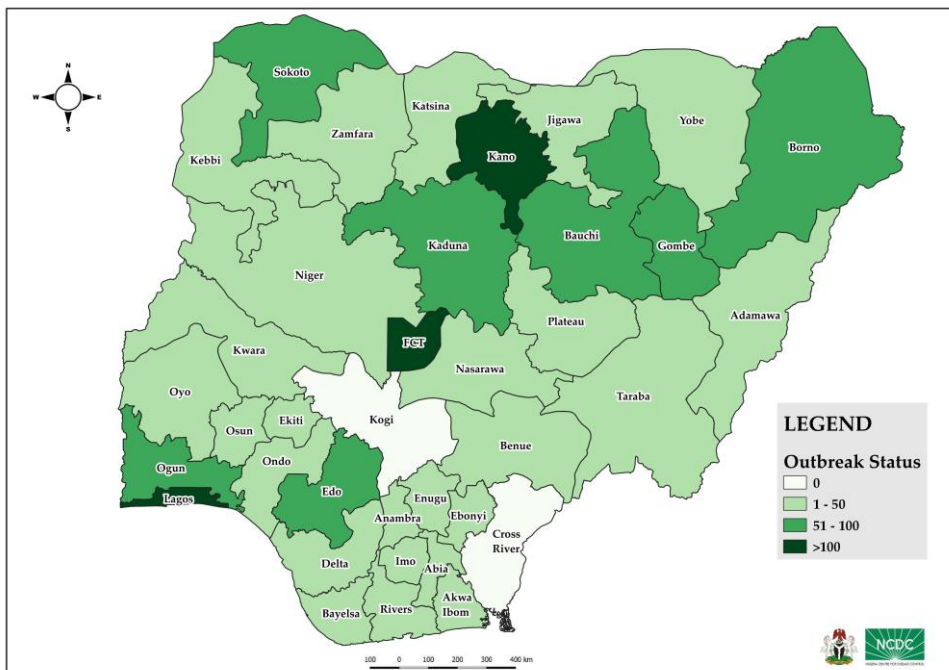
TOTAL NUMBER OF PEOPLE OF INTEREST  
**9305 (Total)**  
**9,237 (99% - Exceeded Follow Up)**

PROVENANCE  
TRAVEL HISTORY – **210 (9%)**  
CONTACTS – **686 (28%)**  
NO EPIDEMIOLOGIC LINK – **1307 (55%)**  
INCOMPLETE – **185 (8%)**

GLOBAL UPDATES  
TOTAL NUMBER OF CASES  
**3,267,184 (229,971 deaths)**

COUNTRIES AFFECTED\*  
**212**  
Excluding the 2 International Conveyances

Figure 1: Map of Nigeria showing 34 states and FCT affected by COVID-19



## GENERAL FACT SHEET – DATA AS AT MAY 2<sup>nd</sup> 2020

Table 1: States with reported laboratory-confirmed COVID-19 cases, recoveries, deaths and days since last reported case

STATES	CONFIRMED CASES		DISCHARGED CASES		DEATHS		TOTAL ACTIVE CASES	DAYS SINCE LAST REPORTED CASE
	CUMULATIVE	NEW	CUMULATIVE	NEW	CUMULATIVE	NEW		
Lagos	1068	62	247	22	30	2	791	0
Kano	313	2	7	7	6	3	300	0
FCT	266	52	36	0	3	0	227	0
Gombe	96	4	0	0	0	0	96	0
Borno	75	6	0	0	11	5	64	0
Kaduna	66	31	6	0	1	0	59	2
Ogun	56	0	9	1	2	1	45	0
Sokoto	54	13	1	0	8	1	45	0
Bauchi	53	5	6	0	0	0	47	0
Edo	52	5	10	0	3	0	39	3
Katsina	38	0	6	0	6	4	26	0
Osun	36	2	22	4	3	0	11	0
Oyo	33	4	9	0	2	0	22	0
Delta	17	0	4	0	2	0	11	1
Akwa Ibom	16	0	10	0	2	0	4	2
Kwara	16	2	2	0	0	0	14	0
Rivers	14	0	2	0	2	0	10	1
Ondo	13	0	3	0	0	0	10	1
Yobe	13	9	0	0	1	1	12	1
Kebbi	12	10	0	0	0	0	12	0
Zamfara	12	3	0	0	1	0	11	5
Ekiti	11	0	2	0	1	0	8	4
Nasarawa	9	2	0	0	0	0	9	0
Enugu	8	4	2	0	0	0	6	2
Taraba	8	0	0	0	0	0	8	1
Jigawa	7	0	0	0	1	0	6	0
Bayelsa	5	0	0	0	0	0	5	0
Ebonyi	5	2	0	0	0	0	5	0
Adamawa	4	0	0	0	0	0	4	1
Niger	3	0	0	0	0	0	3	1
Plateau	3	2	0	0	0	0	3	0
Abia	2	0	0	0	0	0	2	12
Imo	2	0	0	0	0	0	2	0
Anambra	1	0	1	0	0	0	0	22
Benue	1	0	0	0	0	0	1	35
<b>TOTAL</b>	<b>2388</b>	<b>220</b>	<b>385</b>	<b>34</b>	<b>85</b>	<b>17</b>	<b>1918</b>	

States including FCT are arranged in descending order by number of total confirmed cases

# SELECTED CHARTS

Figure 2: Daily Epidemic Curve of Confirmed Cases (WK9 – WK18)

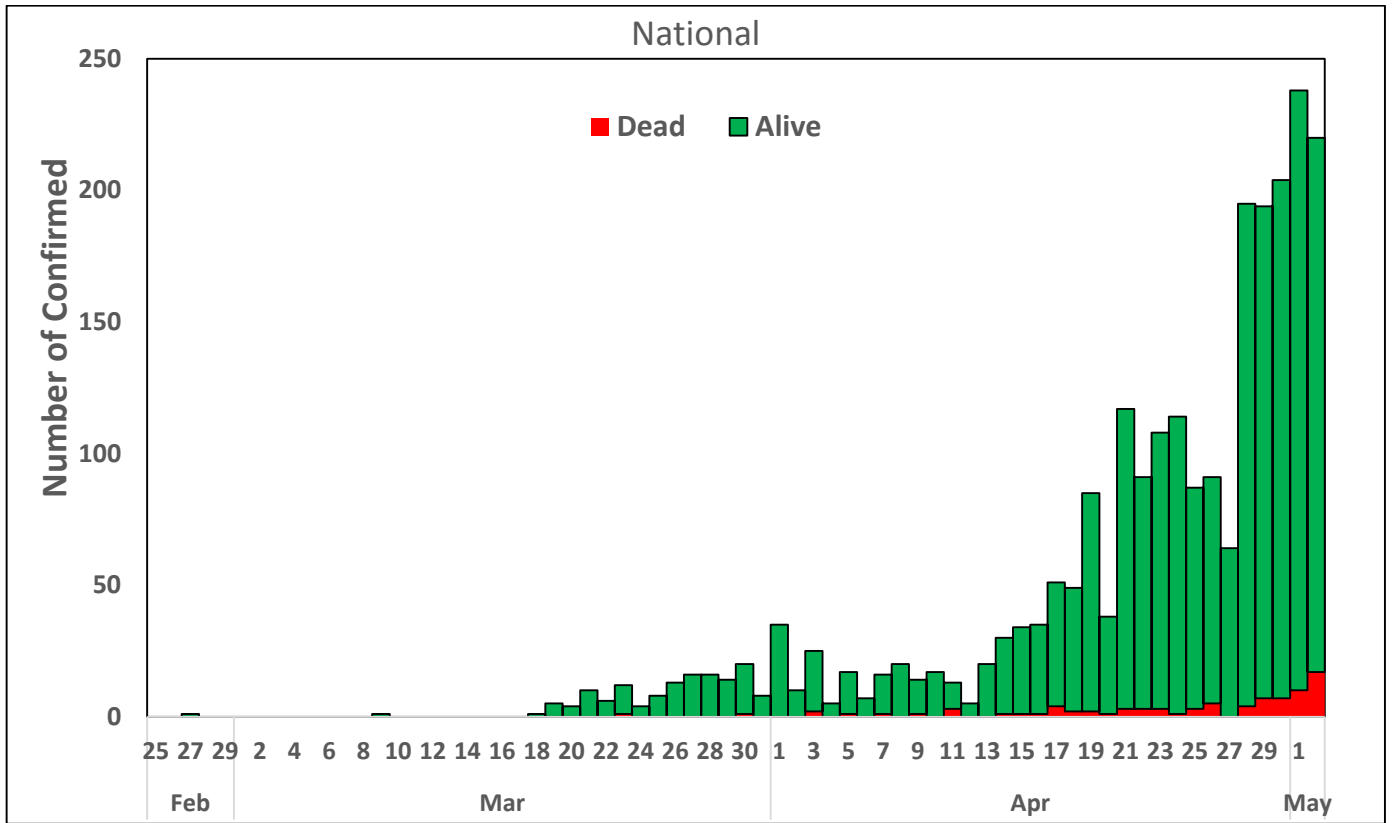
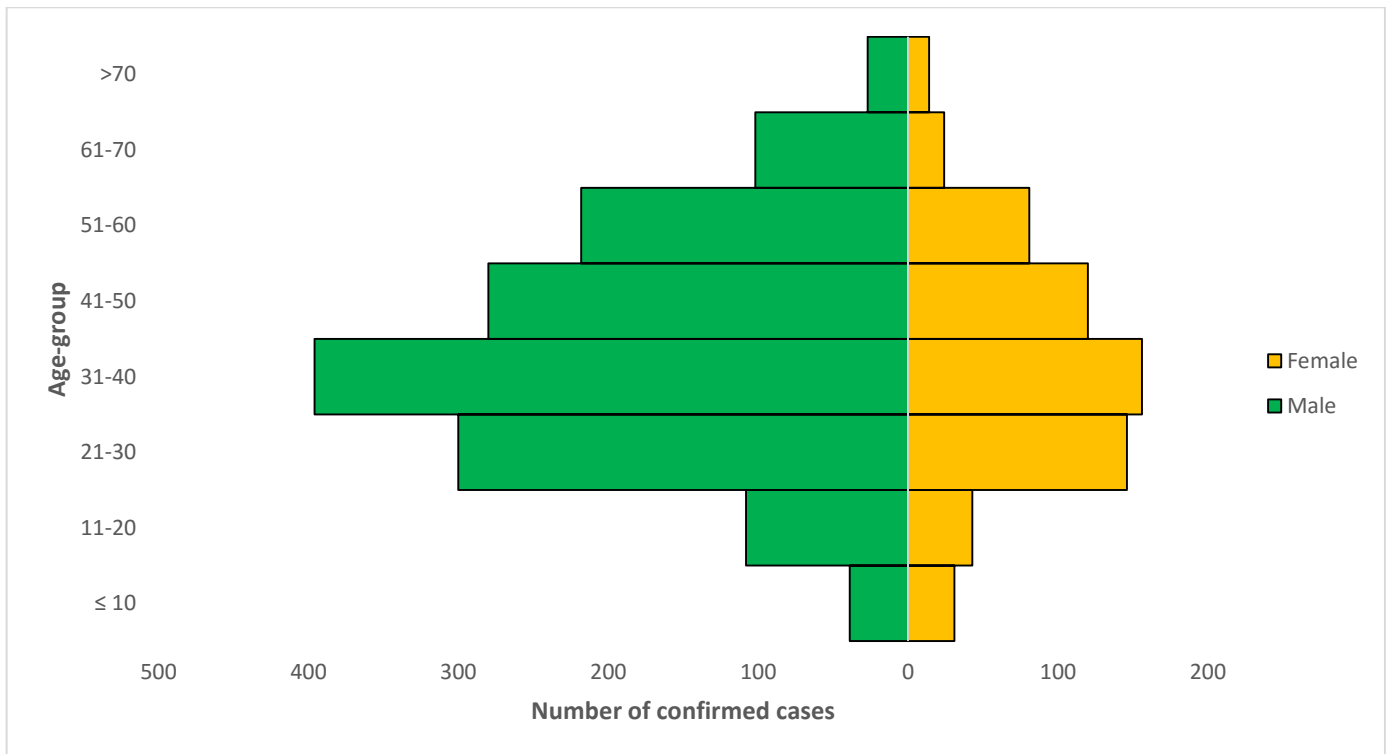


Figure 3: Age-Sex Distribution of Confirmed Cases (WK9 – WK18)



## PREPAREDNESS

Since the confirmation of the first case on 27<sup>th</sup> February, the NCDC has released advisories and statements to help Nigerians and affected groups in particular respond to the pandemic

- Ahead of the Ramadan fasting period, an [Advisory for Ramadan](#) has been issued.
- NCDC releases periodic [public health advisories](#) to Nigerians on the COVID-19 disease, and recently released an [advisory on the use of face masks](#).
- NCDC has released guidelines for the [management of pregnant women and nursing mothers](#) during the pandemic.
- Guidelines for [businesses](#) have been released.
- To address burials of loved ones who die from COVID-19, guidelines have been issued to advise on the [management of dead bodies](#).
- NCDC has released a [Self-Isolation and Quarantine Guide](#) to help those who are exposed to COVID-19 confirmed cases or returnees to Nigeria.
- For health centres managing cases, the following documents have been released- a guideline for the [Rational Use of Personal Protective Equipment in the care of COVID-19 cases](#).
- As part of plans to increase the testing capacity of the country, the NCDC published a [National Strategy to Scale Up Access to Coronavirus Disease Testing in Nigeria](#) document
- The Presidential Task Force has published policies and announcements on COVID-19 [available on the website of the Presidency](#) – including presidential addresses, task force updates and information on livelihood and economic support.

## RESPONSE

On February 28<sup>th</sup> 2020 a multi-sectoral Emergency Operations Centre (EOC) was activated at Level 3 – the highest emergency level in Nigeria –led by NCDC in close coordination with the State Public Health EOCs (PHEOC).

- Deployment of high-level technical and Rapid response surge teams to Kano State to support response activities
- Developed and disseminated case definition for community active case search
- Laboratory testing capacity has now been increased to 2500 per day
- Deployment of Rapid Response Team (RRT) to support response in all states with confirmed case(s)  
Currently **35** RRTs deployed
- All education materials can be found via [www.covid19.ncdc.gov.ng](http://www.covid19.ncdc.gov.ng)