

# YELLOW FEVER SITUATION REPORT

Serial Number: 009	September 2024 Monthly Sitrep
Epi Week:	36 - 40 as at 30 <sup>th</sup> September 2024
Reporting Month:	September 2024



The information contained in this document is confidential, privileged and only for the intended recipient and may not be used, published, or redistributed to the public

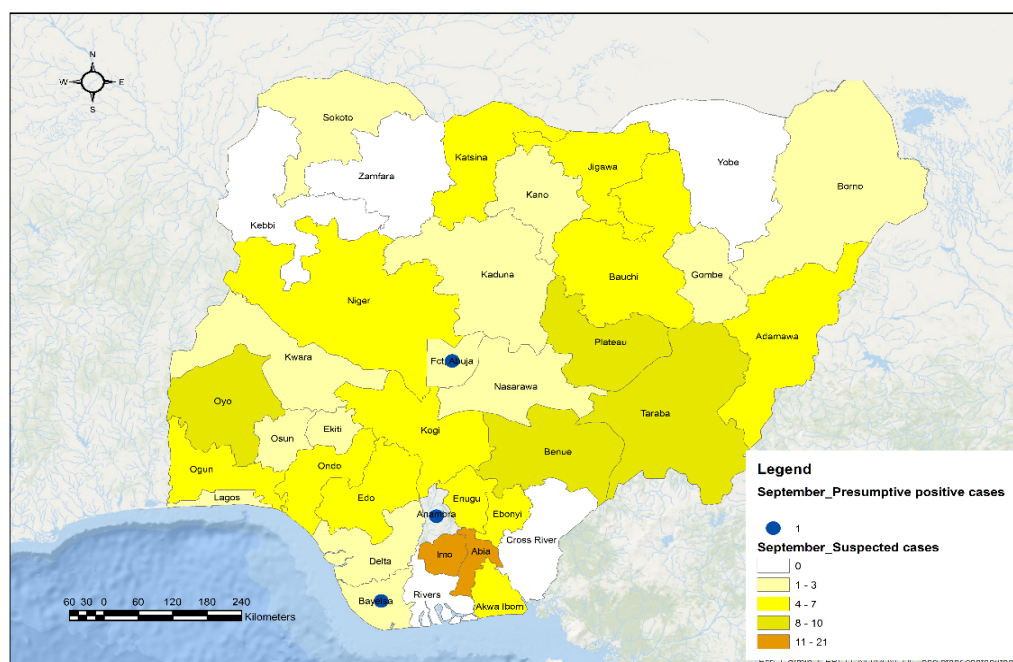
## REPORTING MONTH: SEPTEMBER 2024

The information contained in this document is confidential, privileged and only for the intended recipient and may not be used, published or redistributed to the public

### HIGHLIGHTS

#### REPORTING PERIOD: 1<sup>ST</sup> JANUARY 2024 – 30<sup>TH</sup> SEPTEMBER 2024

- The Nigeria Centre for Disease Control & Prevention (NCDC) continues to monitor reports of yellow fever cases in Nigeria.
- A total of 173 suspected cases were reported from 129 Local Government Areas (LGAs) across 32 states. The states include Abia (11), Adamawa (4), Akwa Ibom (5), Anambra (27), Bauchi (4), Bayelsa (2), Benue (9), Borno (2), Delta (1), Ebonyi (4), Edo (6), Ekiti (3), Enugu (6), FCT, Abuja (2), Gombe (2), Imo (13), Jigawa (7), Kaduna (1), Kano (1), Katsina (5), Kogi (5), Kwara (2), Lagos (2), Nasarawa (2), Niger (4), Ogun (6), Ondo (6), Osun (2), Oyo (9), Plateau (9), Sokoto (3) and Taraba (8).
- Three (3)** Presumptive positive cases were reported within the reporting month from the University of Nigeria Teaching Hospital, (UNTH) Enugu [1], Maitama District Hospital, Abuja [1], and University of Benin Teaching Hospital (UBTH) Benin [1]. These cases were reported from: **Anambra (1)** [Onitsha North (1)], **Bayelsa (1)** [Brass (1)], and **FCT, Abuja (1)** [Kwali (1)].
- Three (3) inconclusive cases were recorded from Central Public Health Laboratory, (CPHL) Yaba (3). The cases were reported from **Lagos (1)** Mushin (1), **Osun (1)** Ede South (1), **Oyo (1)** Ibadan North (1),
- No** confirmed cases were recorded within the reporting month.
- No** death was recorded among suspected cases in the reporting month.



**173**  
SUSPECTED  
CASES

**32**  
STATES WITH  
SUSPECTED  
CASES

**0**  
CONFIRMED  
CASES

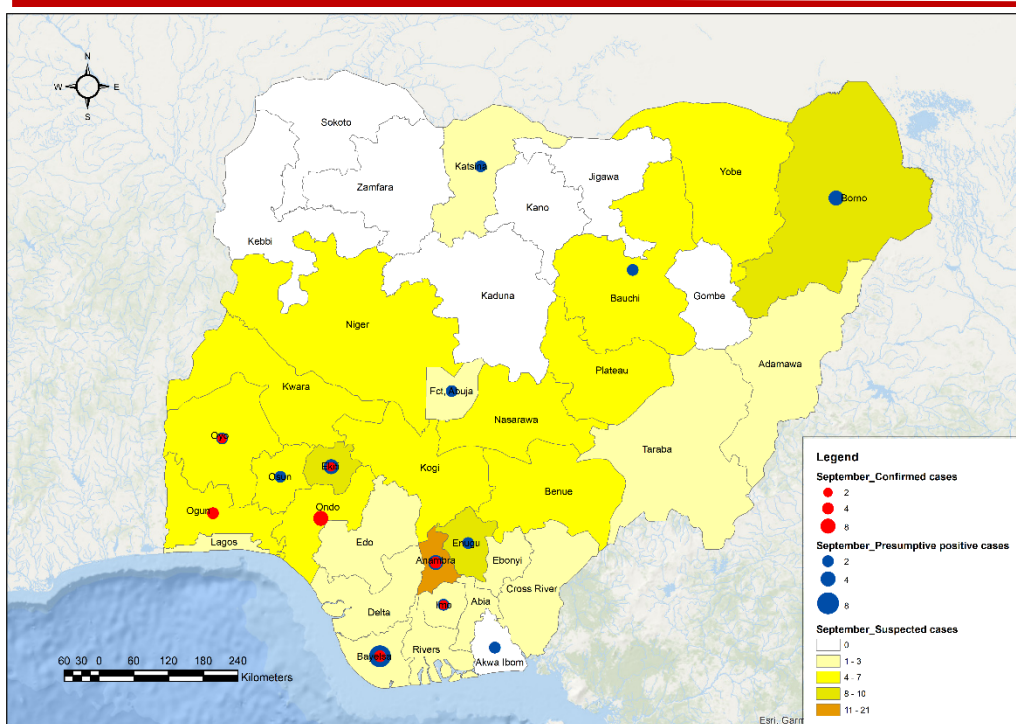
**0**  
STATE WITH  
CONFIRMED  
CASES

**0**  
STATES WITH  
DEATHS IN  
CONFIRMED  
CASES

**0**  
DEATHS IN  
CONFIRMED  
CASES

## CUMULATIVE FOR 1<sup>ST</sup> JANUARY 2024 – 30<sup>TH</sup> SEPTEMBER 2024

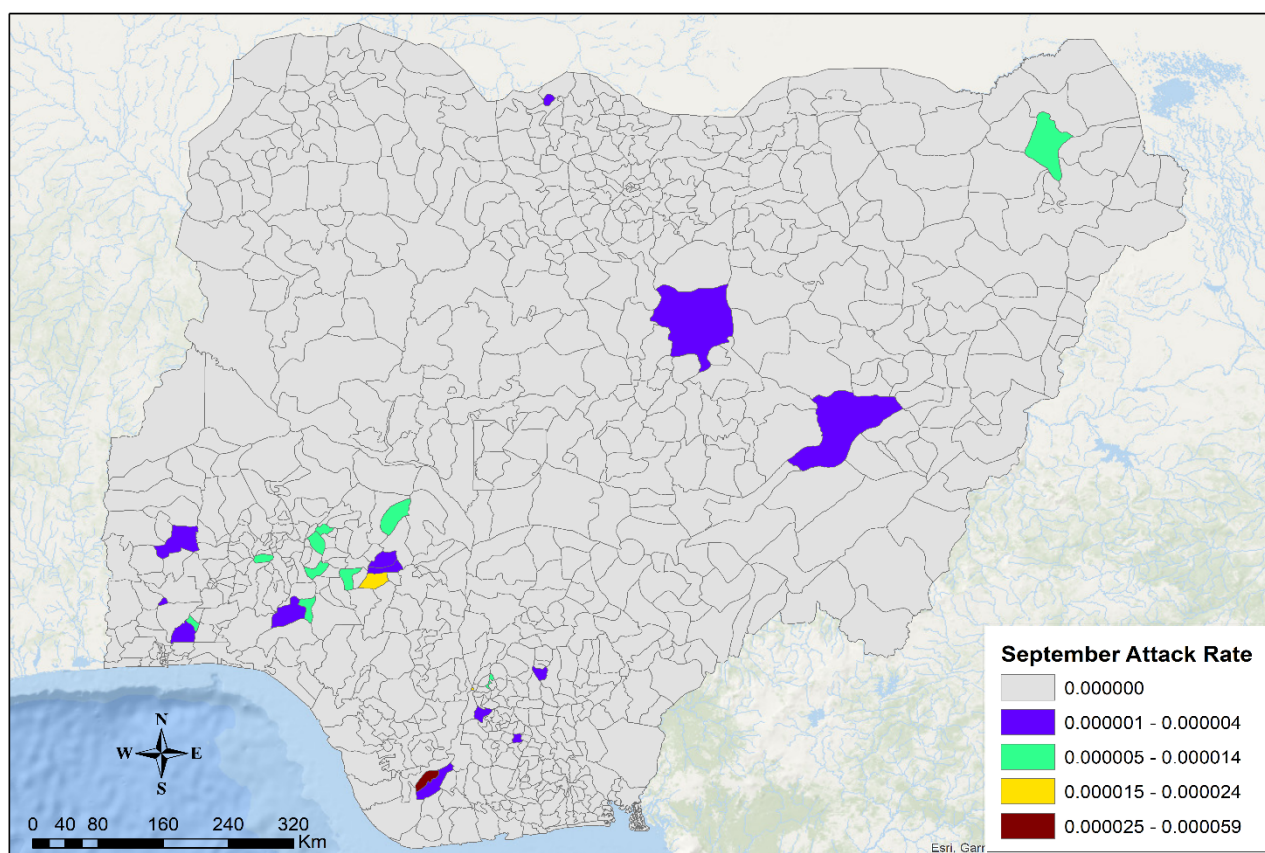
- Cumulatively from 1<sup>st</sup> January 2024 – 30<sup>th</sup> September 2024, a total of 2,248 suspected cases have been reported from 592 LGAs in 36 states including the FCT.
- The cases were reported from the following states: Abia (44), Adamawa (46), Akwa Ibom (34), Anambra (187), Bauchi (98), Bayelsa (70), Benue (56), Borno (95), Cross River (30), Delta (30), Ebonyi (16), Edo (54), Ekiti (88), Enugu (106), FCT (7), Gombe (35), Imo (53), Jigawa (134), Kaduna (38), Kano (11), Katsina (192), Kebbi (70), Kogi (55), Kwara (73), Lagos (19), Nasarawa (47), Niger (37), Ogun (75), Ondo (68), Osun (44), Oyo (56), Plateau (84), Rivers (34), Sokoto (38), Taraba (57), Yobe (23) and Zamfara (44).
- Total of **Forty-six (46)** presumptive positive and **thirty (30)** inconclusive results were recorded from the Nigeria Laboratory networks.
- These **presumptive positives** were from Central Public Health Laboratory, (CPHL) Lagos (16), National Reference Laboratory (NRL) Abuja (3), University of Nigeria Teaching Hospital (UNTH) Enugu (9), University of Benin Teaching Hospital (UBTH) Benin (11), University of Maiduguri Teaching Hospital, (UMTH) Maiduguri (6), Maitama District Hospital (MDH) Abuja (1)
- The **inconclusive** cases were recorded from the UBTH Benin (3), UNTH Enugu (5), NRL Abuja (1) and CPHL Lagos (21). These cases were reported from: Anambra (2), Akwa Ibom (2), Bauchi (1), Ekiti (2), Enugu (2), Imo (1), Lagos (2), Ogun (2), Ondo (6), Osun (4), Oyo (5), Rivers (1). These samples have been shipped to IP Dakar for confirmation.
- Eleven (18)** confirmed cases were recorded within the reporting period. These cases were from: Anambra (3), Bayelsa (2), Ekiti (1), Imo (1), Ogun (2), Ondo (8) and Oyo (1).
- One (1)** death has been recorded from confirmed cases [**CFR = 5.5%**].
- Male to female ratio for suspected cases was **1.10:1** with males 1,170 (52.0%) and females 1078 (48.0%)
- One thousand, seven hundred and thirty-eight (77.0%) of suspected cases were predominantly aged 30 years and below.
- Two hundred and seventy-two (12.1%) of 2,248 suspected cases received at least one dose of the yellow fever vaccine.
- The NCDC is coordinating response activities through the National Multi-agency Yellow Fever Technical Working Group (YF TWG).



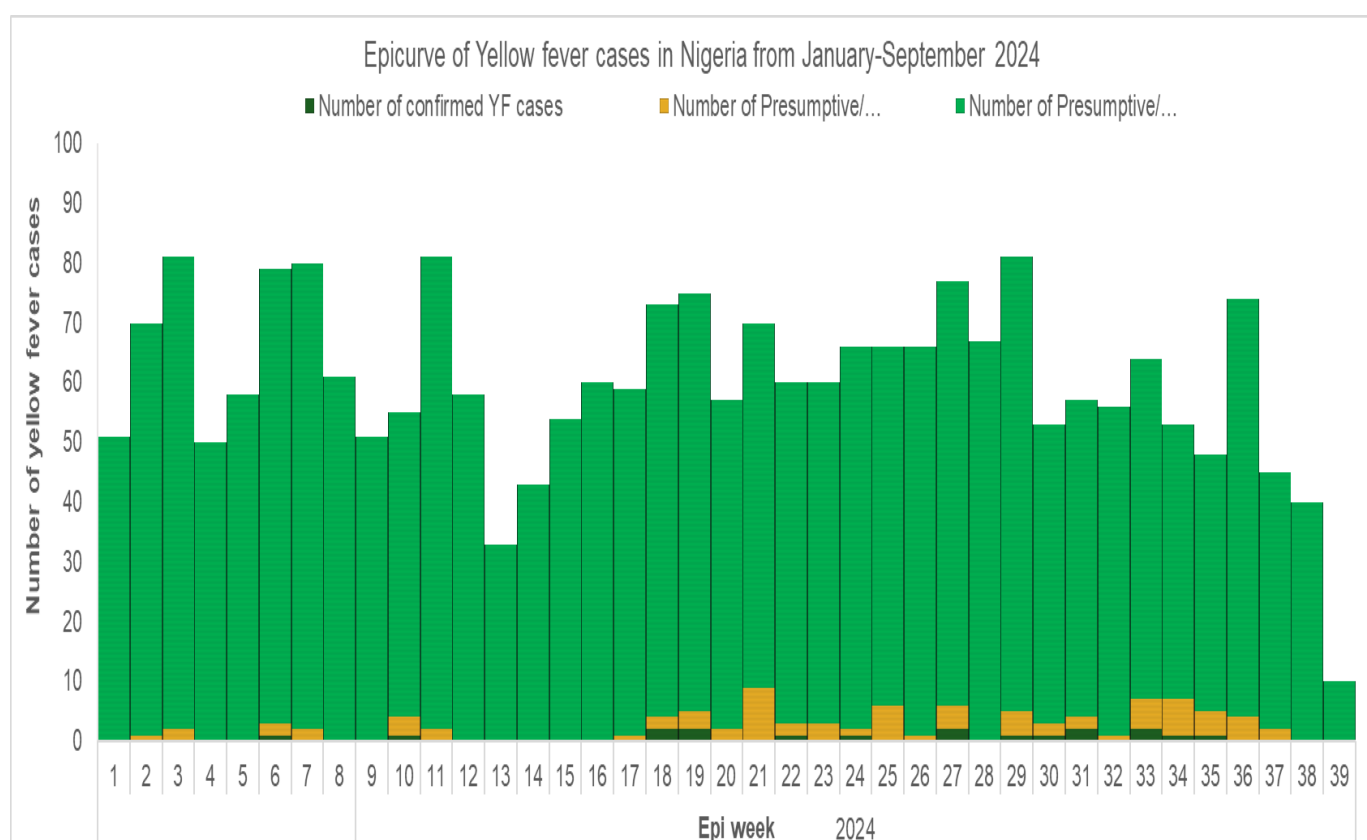
<b>2,248</b> SUSPECTED CASES	<b>36 + FCT</b> STATES WITH SUSPECTED CASES
<b>18</b> CONFIRMED CASES	<b>7</b> STATES WITH CONFIRMED CASES
<b>1</b> DEATHS IN CONFIRMED CASES	<b>1</b> STATES WITH DEATHS IN CONFIRMED CASES

**Table 1: Summary of yellow fever cases in Nigeria from 1<sup>st</sup> January – 30<sup>th</sup> September 2024**

State	# Suspected Cases	# LGAs with suspected cases	# LGAs with confirmed cases	Laboratory Results					Deaths	
				Samples positive (IgM) & Inconclusive in NG)	LGAs with positive (IgM) & Inconclusive in NG)	Confirmed Cases (PCR)	Confirmed Cases (IP Dakar)	Total Confirmed Cases	# Deaths among Confirmed Cases [CFR] (%)	# Deaths among All Cases [CFR](%)
Abia	44	13	-	-	-	-	-	-	-	-
Adamawa	46	17	-	-	-	-	-	-	-	-
Akwa Ibom	34	19	-	3	3	-	-	-	-	-
Anambra	187	21	3	9	5	-	3	3	-	-
Bauchi	98	17	-	2	2	-	-	-	-	-
Bayelsa	70	10	2	11	6	2	-	2	1	1
Benue	56	20	-	-	-	-	-	-	-	-
Borno	95	24	-	6	5	-	-	-	-	-
Cross River	30	15	-	-	-	-	-	-	-	-
Delta	30	16	-	-	-	-	-	-	-	-
Ebonyi	16	9	-	-	-	-	-	-	-	-
Edo	54	21	-	-	-	-	-	-	-	-
Ekiti	88	16	1	7	5	-	1	1	-	-
Enugu	106	15	-	3	1	-	-	-	-	-
FCT Abuja	7	4		1	1	-	-	-	-	-
Gombe	35	6	-	-	-	-	-	-	-	-
Imo	53	23	1	2	2	-	1`	1	-	-
Jigawa	134	24	-	-	-	-	-	-	-	-
Kaduna	38	13	-	-	-	-	-	-	-	-
Kano	11	8	-	-	-	-	-	-	-	-
Katsina	192	31	-	1	1	-	-	-	-	-
Kebbi	70	17	-	-	-	-	-	-	-	-
Kogi	55	18	-	-	-	-	-	-	-	-
Kwara	73	18	-	-	-	-	-	-	-	-
Lagos	19	12	-	2	2	-	-	-	-	-
Nasarawa	47	13	-	-	-	-	-	-	-	-
Niger	37	11	-	-	-	-	-	-	-	-
Ogun	75	18	2	5	5	-	2	2	-	-
Ondo	68	14	5	12	7	-	8	8	-	-
Osun	44	22	-	5	4	-	-	-	-	-
Oyo	56	24	1	6	5	-	1	1	-	-
Plateau	84	20	-	-	-	-	-	-	-	-
Rivers	34	16	-	1	1	-	-	-	-	-
Sokoto	38	11	-	-	-	-	-	-	-	-
Taraba	57	16	-	-	-	-	-	-	-	-
Yobe	23	8	-	-	-	-	-	-	-	-
Zamfara	44	12	-	-	-	-	-	-	-	-
<b>TOTAL</b>	<b>2,248</b>	<b>592 (76.5%)</b>	<b>15 (1.9%)</b>	<b>76 3.4%)</b>	<b>55 (7.1%)</b>	<b>2 (0.2%)</b>	<b>16 (0.2%)</b>	<b>18 (0.8%)</b>	<b>1 (5.5%)</b>	<b>1 (0.04%)</b>

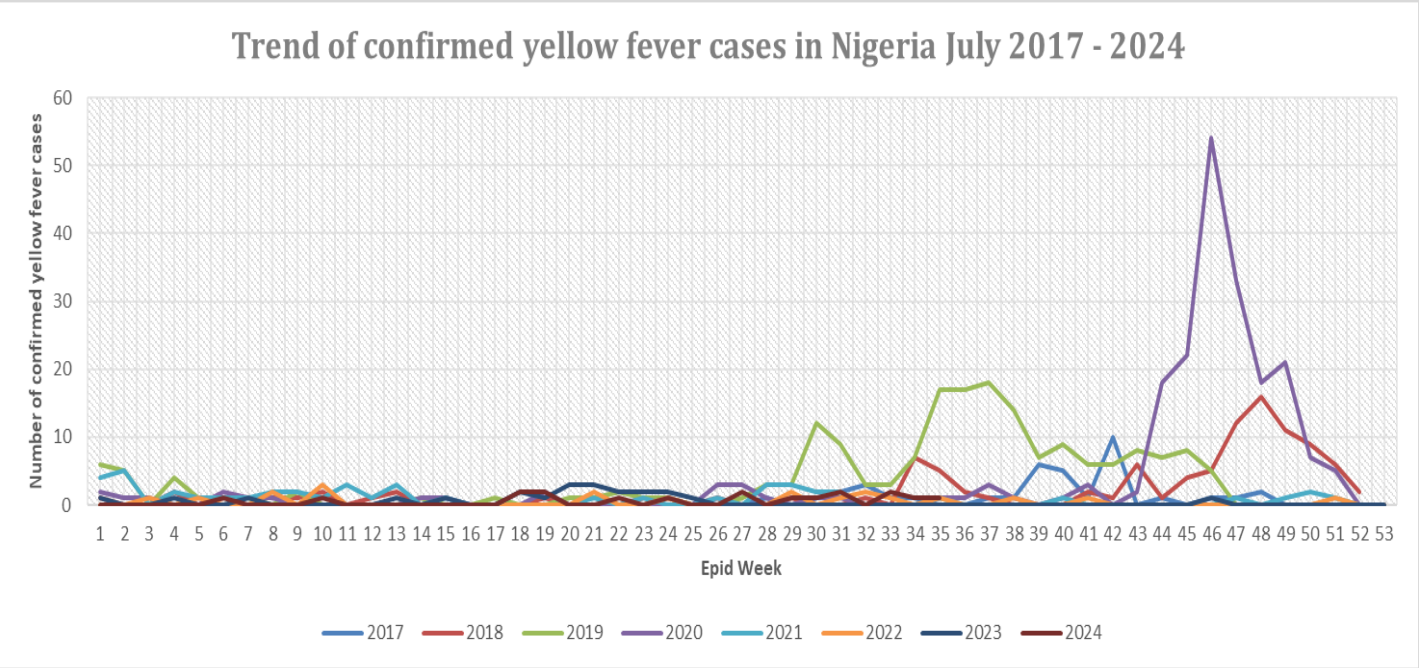


**Figure 1: Map of Nigeria showing yellow fever outbreak attack rates in affected LGAs for September 2024**

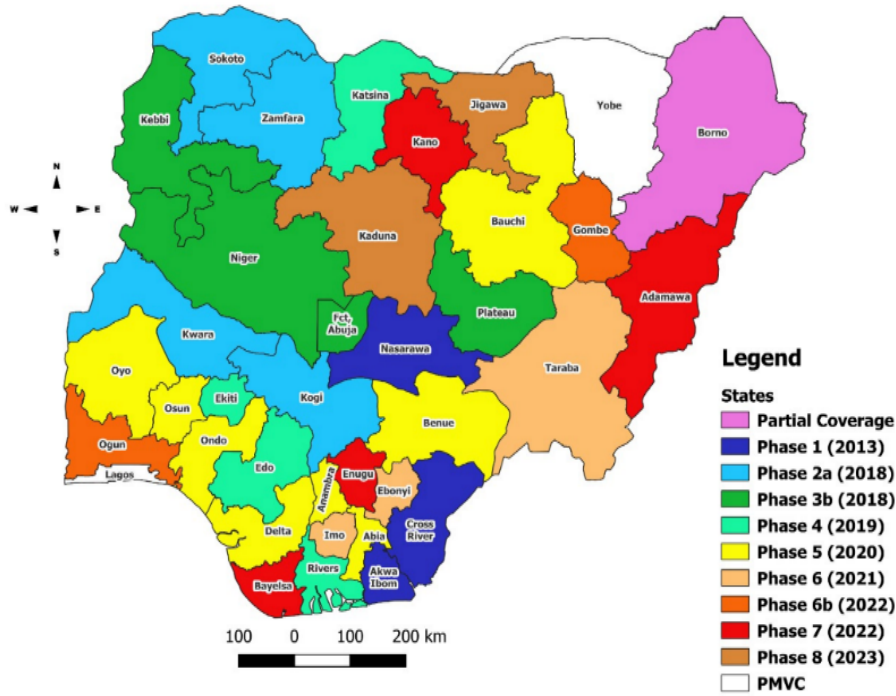


**Figure 2: Epicurve of yellow fever cases in Nigeria from 1<sup>st</sup> January – 30<sup>th</sup> September 2024**

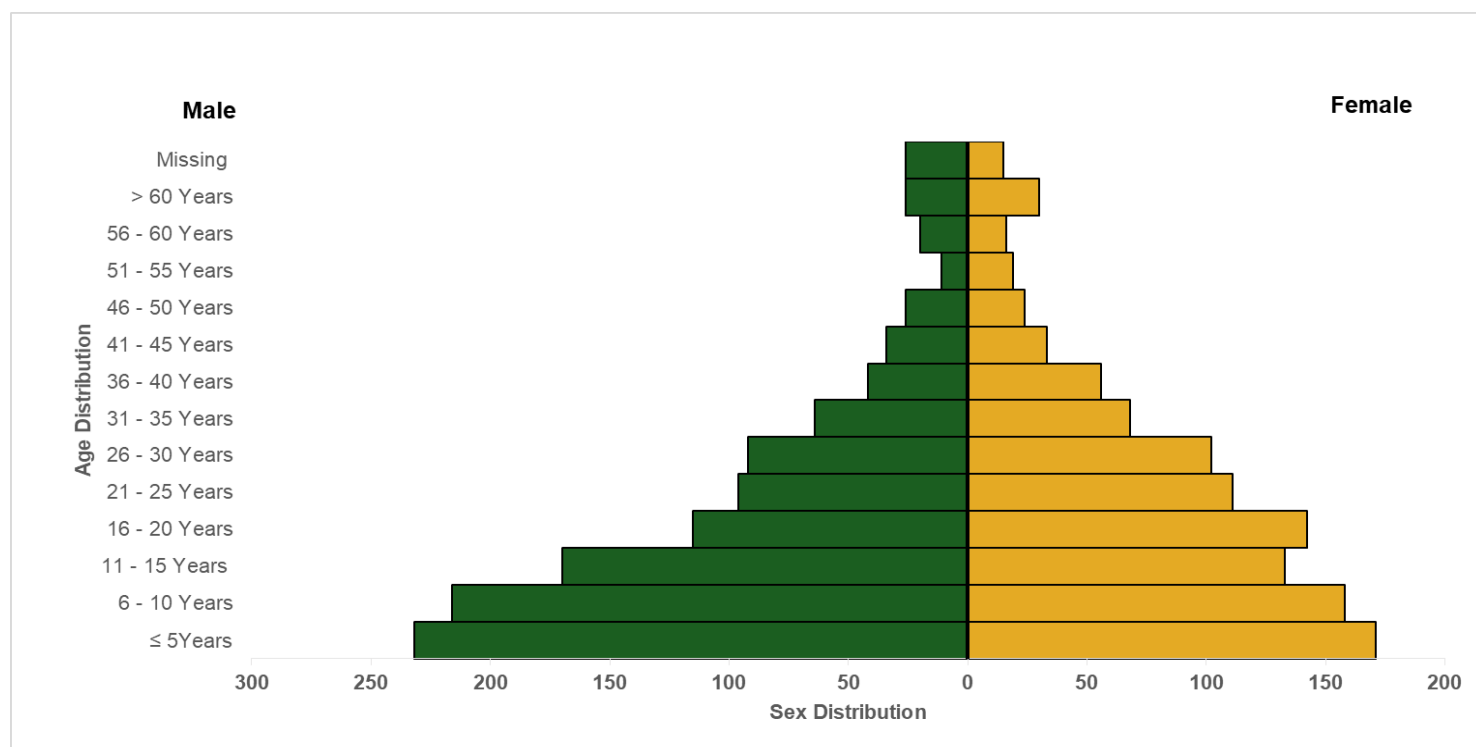




**Figure 3: Trend of confirmed yellow fever cases in Nigeria 2017 –September 2024**



**Figure 4: Map of Nigeria showing states and years of implementation of yellow fever mass vaccination campaigns from 2013 – 2024**



**Figure 5: Age and sex distribution of yellow fever cases in Nigeria from January – September 2024**

## Partners

