

# COVID-19 SITUATION REPORT

## SITUATION REPORT 117

Wednesday, 24<sup>th</sup> June 2020



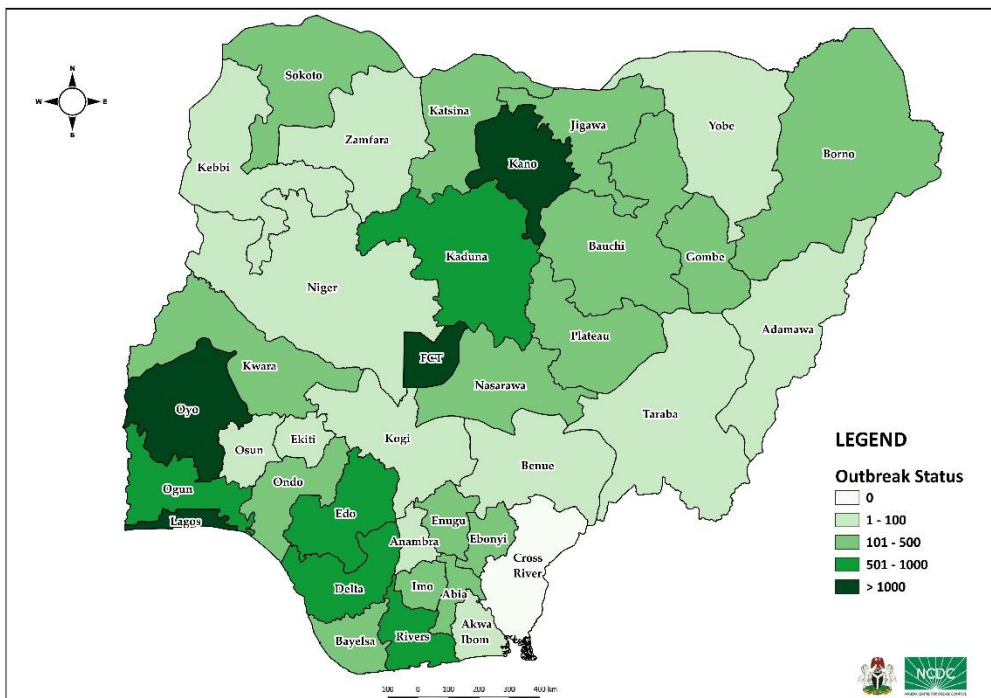
DATA AS REPORTED AND ACCURATE BY NCDC AS AT MIDNIGHT 24<sup>th</sup> JUNE 2020

### HIGHLIGHTS

- Six hundred and forty-nine (**649**) confirmed cases were reported in the last 24 hours from twenty-two (**22**) states – Lagos (250), Oyo (100), Delta (40), Plateau (40), Abia (28), Kaduna (27), Ogun (22), Edo (20), Akwa Ibom (18), FCT (17), Kwara (17), Enugu (14), Adamawa (13), Niger (13), Bayelsa (7), Bauchi (6), Osun (6), Anambra (4), Gombe (3), Sokoto (2), Imo (1) and Kano (1).
- No new state recorded a confirmed COVID-19 case in the last 24 hours. The total number of states including FCT that have reported at least one confirmed case in Nigeria is still **36** (35 states + FCT).
- Two hundred and seventy-five (**275**) cases were discharged in the last 24 hours in seventeen (**17**) states – Abia (80), Kano (30), Ogun (29), Gombe (24), Delta (23), Bauchi (21), Nasarawa (18), Rivers (14), Edo (10), Ondo (8), Anambra (6), Kwara (6), Sokoto (2), Bayelsa (1), Lagos (1), Osun (1) and Oyo (1).
- Nine (**9**) deaths were recorded in the last 24 hours in seven (**7**) states – Delta (2), Nasarawa (2), Bauchi (1), Bayelsa (1), Gombe (1), Ogun (1) and Plateau (1).

### STATE OF THE NATION

Figure 1: Map of Nigeria showing 35 states and FCT affected by COVID-19



### SITUATION UPDATES

Total (New in the last 24 hours)

SAMPLES TESTED

**122,155 (2,047)**

CONFIRMED CASES

**22,020 (649)**

AFFECTED STATES INCLUDING FCT

**36 (0)**

DISCHARGED CASES

**7,613 (275)**

CONFIRMED FATALITIES

**542 (9) – 2.5% CFR**

DEMOGRAPHICS

MALE – 14,644 (67%)

FEMALE – 7,376 (33%)

MOST AFFECTED AGE GROUP

31 - 40 (24%)

PERSONS OF INTEREST

**10,498 (Total)**

**10,375 (98.8% - Exceeded Follow Up)**

PROVENANCE

TRAVEL HISTORY – 407 (2%)

CONTACTS – 5,300 (24%)

UNKNOWN EXPOSURE – 16,313 (74%)

GLOBAL UPDATES

TOTAL NUMBER OF CASES

**9,129,146 (473,797 deaths)**

COUNTRIES & TERRITORIES AFFECTED\*

**213**

\*Excluding the 2 International Conveyances

## GENERAL FACT SHEET – DATA AS AT 24<sup>th</sup> JUNE 2020

Table 1: States with reported laboratory-confirmed COVID-19 cases, recoveries, deaths and days since last reported case

STATES	CONFIRMED CASES		DISCHARGED CASES		DEATHS		TOTAL ACTIVE CASES	DAYS SINCE LAST REPORTED CASE
	CUMULATIVE	NEW	CUMULATIVE	NEW	CUMULATIVE	NEW		
Lagos	9,323	250	1,458	1	126	0	7,739	0
FCT	1,622	17	497	0	30	0	1,095	0
Kano	1,191	1	774	30	51	0	366	0
Oyo	1,155	100	292	1	9	0	854	0
Rivers	930	0	454	14	35	0	441	2
Edo	817	20	253	10	32	0	532	0
Ogun	721	22	451	29	17	1	253	0
Kaduna	635	27	308	0	10	0	317	0
Delta	609	40	159	23	22	2	428	0
Bauchi	488	6	368	21	12	1	108	0
Gombe	482	3	302	24	16	1	164	0
Borno	477	0	376	0	31	0	70	1
Katsina	434	0	239	0	22	0	173	2
Jigawa	317	0	191	0	6	0	120	11
Plateau	293	40	148	0	8	1	137	0
Abia	280	28	173	80	3	0	104	0
Ebonyi	264	0	222	0	1	0	41	2
Imo	247	1	21	0	3	0	223	0
Kwara	217	17	128	6	6	0	83	0
Nasarawa	193	0	112	18	8	2	73	2
Bayelsa	184	7	41	1	12	1	131	0
Enugu	174	14	31	0	5	0	138	0
Ondo	162	0	67	8	17	0	78	1
Sokoto	140	2	118	2	14	0	8	0
Akwa Ibom	83	18	43	0	2	0	38	0
Niger	79	13	37	0	3	0	39	0
Zamfara	76	0	71	0	5	0	0	37
Osun	73	6	47	1	5	0	21	0
Anambra	70	4	57	6	9	0	4	0
Kebbi	67	0	40	0	6	0	21	7
Adamawa	58	13	37	0	5	0	16	0
Yobe	56	0	45	0	8	0	3	6
Benue	47	0	15	0	1	0	31	1
Ekiti	35	0	28	0	2	0	5	3
Taraba	18	0	10	0	0	0	8	35
Kogi	3	0	0	0	0	0	3	21
<b>TOTAL</b>	<b>22,020</b>	<b>649</b>	<b>7,613</b>	<b>275</b>	<b>542</b>	<b>9</b>	<b>13,865</b>	

States including FCT are arranged in descending order by number of total confirmed cases

## SELECTED CHARTS

Figure 2: Daily Epidemic Curve of Confirmed Cases (WK9 – WK26)

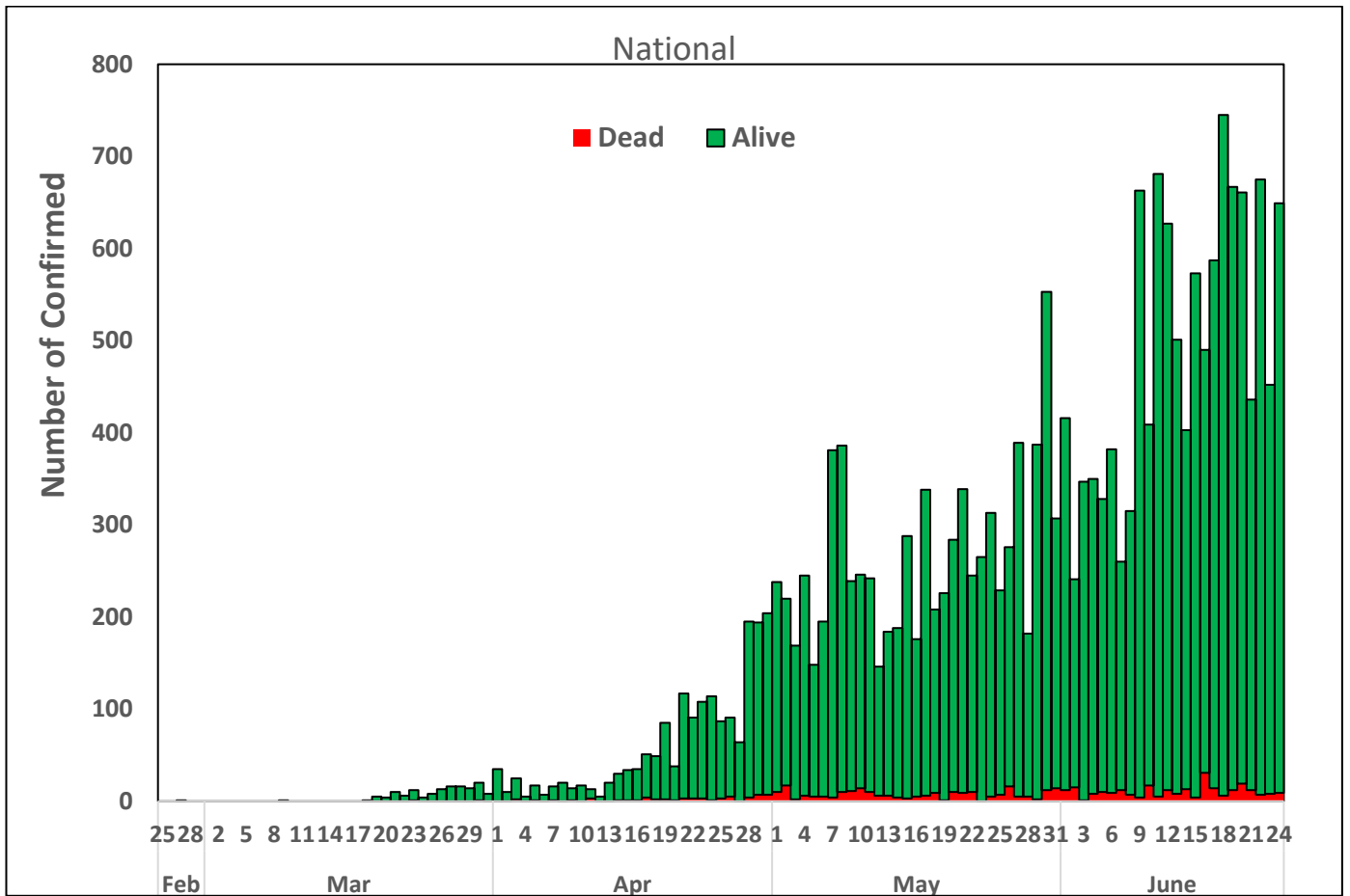
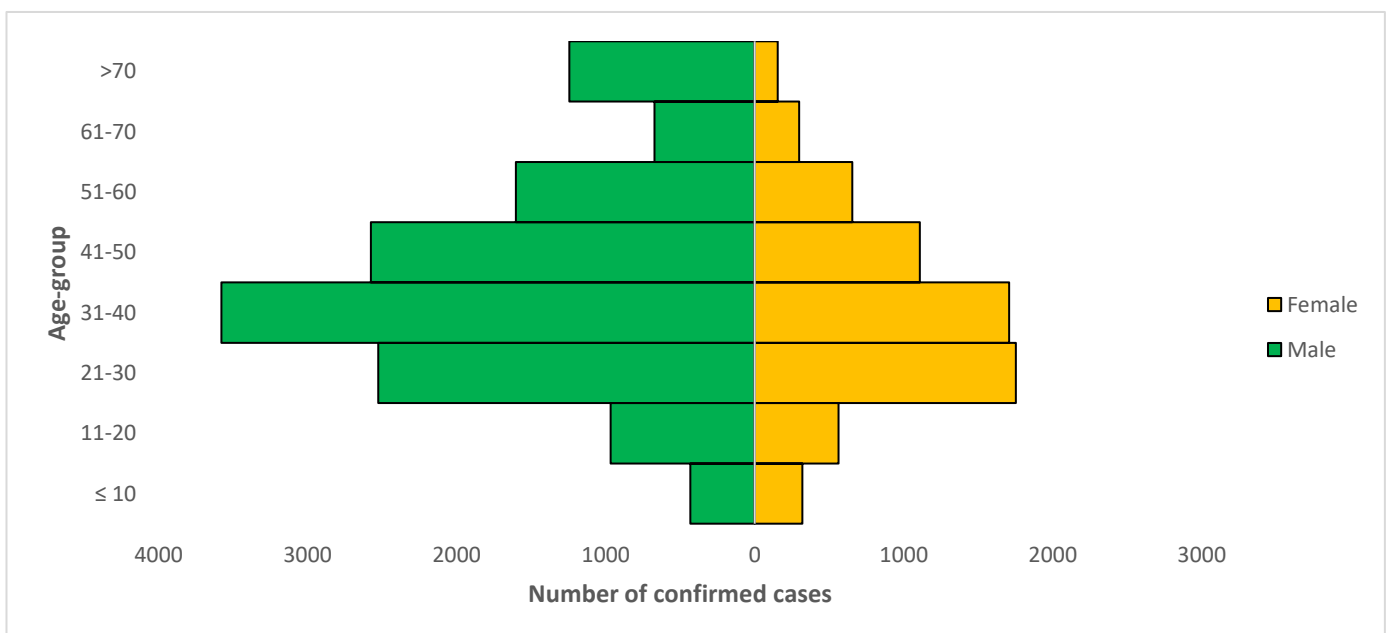


Figure 3: Age-Sex Distribution of Confirmed Cases (WK9 – WK26)



## PREPAREDNESS

Since the confirmation of the first case on 27<sup>th</sup> February 2020, the NCDC has released advisories and statements to help Nigerians and affected groups in particular to respond to the pandemic

- NCDC has released [guidelines on the re-opening of places for worship](#).
- The Nigeria Police Force has released COVID-19 operational guidelines for the [Police and other Law Enforcement Agencies](#) in Nigeria
- NCDC and the Department of Hospital Services (Federal Ministry of Health) have updated the [case management guidelines](#) (version 3) with reviewed changes such as the discharge criteria and medication being used for the treatment of cases
- Guidelines have been issued for the [safe transportation of remains of persons suspected or confirmed to have died of COVID-19](#)
- Information on diagnostics of the COVID-19 virus can be found in our [detailed FAQ document](#).
- To increase our testing capacity, NCDC has issued guidelines for the [integration of private labs](#).
- Guidelines for [businesses and employers](#) have been updated.
- NCDC has updated its [case definition](#) , [community case definition](#) and [case management guide](#).
- NCDC releases periodic [public health advisories](#) to Nigerians on the COVID-19 disease.
- To adhere to post-lockdown measures, NCDC has released an [advisory on the use of face masks](#), as well as information on the [Use of Cloth face masks](#) and [how to make your cloth face masks](#).
- NCDC has released guidelines for the [management of pregnant women and nursing mothers](#) during the pandemic.
- To address burials of loved ones who die from COVID-19, guidelines have been issued to advise on the [management of dead bodies](#).
- For health centres managing cases, the following documents have been released- a guideline for the [Rational Use of Personal Protective Equipment in the care of COVID-19 cases](#).
- As part of plans to increase the testing capacity of the country, the NCDC published a [National Strategy to Scale Up Access to Coronavirus Disease Testing in Nigeria](#) document.
- The Presidential Task Force has published policies and announcements on COVID-19 [available on the website of the Presidency](#) – including presidential addresses, task force updates and information on livelihood and economic support.

## RESPONSE

On 28<sup>th</sup> February 2020, a multi-sectoral Emergency Operations Centre (EOC) was activated at Level 3 – the highest emergency level in Nigeria –led by NCDC in close coordination with the State Public Health EOCs (PHEOC).

- **Ongoing engagement with Presidential Task Force (PTF) to finalise framework for Non Pharmaceutical Interventions (NPIs) using risk categorisation of geographical areas**
- **Finalised plans on implementation of state training of trainers (TOT)**
- **Engagement with State Surveillance Officers (SSOs) on data quality improvement**
- **Ongoing engagement with Delta state to finalise plans on implementing a nine (9) day batched training for healthcare workers**
- **Currently collaborating with partners at the grass root on engagement with vulnerable groups such as widows on COVID-19 prevention and control measures in all States**
- Engaged with states/labs on establishment of sample collection sites in health facilities
- Continued hands on training of health workers in states and treatment centres
- Ongoing investigation of healthcare associated infection in Oyo state
- Ongoing engagement with stakeholders and partners on data utilisation to drive targeted messaging
- Engaged community influencers, religious and traditional leaders in disseminating key messages
- All education materials can be found via [www.covid19.ncdc.gov.ng](http://www.covid19.ncdc.gov.ng)