



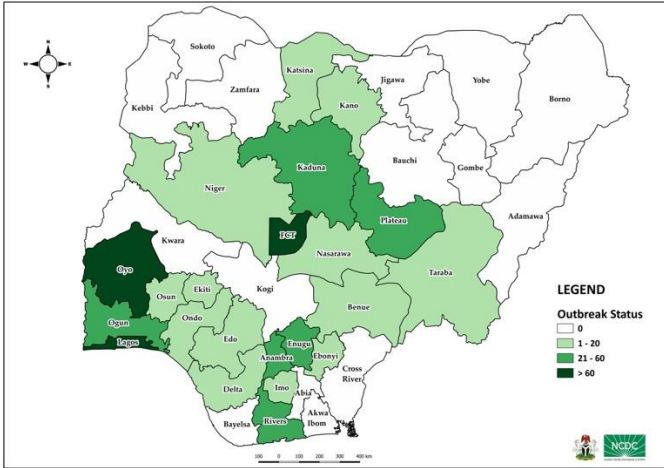
# COVID-19 SITUATION REPORT

## WEEKLY EPIDEMIOLOGICAL REPORT 1

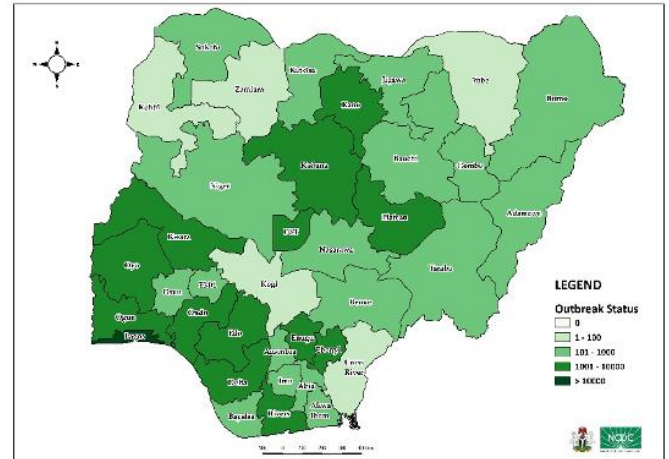
Epi Week 42: 12 – 18 October 2020

DATA AS REPORTED AND ACCURATE BY NCDC AS AT MIDNIGHT 18<sup>TH</sup> OCTOBER 2020

### STATE OF THE NATION



Distribution of cases in the last one week



Distribution of cumulative cases

### HIGHLIGHTS

- In Week 42, the number of new confirmed cases increased from **921** in week 41 to **1,174**. These were reported in **22** states (Table 1)
- In Week 42, the number of discharged cases increased from **967** in week 41 to **4,876**. These were reported in **23** states (Table 1)
- Cumulatively, since the outbreak began in Week **9**, there have been **1,125** deaths reported with a case fatality rate of **1.8%**
- The number of states, and the FCT, that have reported a death in the last one week are **6**
- In Africa, the count for confirmed COVID-19 cases is **1,605,581** with **38,837** resulting in fatality rate of **2.4%**
- Globally, the count for confirmed COVID-19 cases is **39,596,858** with **1,107,374** deaths resulting in fatality rate of **2.8%**

## GENERAL FACT SHEET – DATA AS AT 18<sup>TH</sup> OCTOBER 2020

Table 1: States with reported laboratory-confirmed COVID-19 cases, recoveries, deaths, samples tested and days since last reported case

STATES	CONFIRMED		RECOVERIES		DEATHS		TESTING			ACTIVE CASES
	Total	Last Week	Total	Last Week	Total	Last Week	Total	Last Week	Test Positivity rate (One Week)*	
Abia	898	0	872	0	8	0	8,512	711	0.0	18
Adamawa	248	0	229	21	19	2	2,398	31	0.0	0
Akwa Ibom	295	0	284	6	8	0	3,298	75	0.0	3
Anambra	275	25	229	10	9	0	2,156	61	41.0	27
Bauchi	710	0	690	3	14	0	8,828	27	0.0	6
Bayelsa	403	0	379	3	21	0	2,344	30	0.0	3
Benue	484	2	413	0	10	0	3,850	138	1.4	61
Borno	745	0	705	0	36	0	12,383	245	0.0	4
Cross River	87	0	74	0	9	0	1,465	26	0.0	4
Delta	1,812	9	1,737	0	49	0	12,772	102	8.8	26
Ebonyi	1,049	7	1,011	3	30	0	6,093	54	13.0	8
Edo	2,643	7	2,522	19	107	0	17,551	355	2.0	14
Ekiti	329	6	315	3	6	0	6,816	18	33.3	8
Enugu	1,313	24	1,269	103	21	0	7,866	1516	1.6	23
FCT	5,918	112	5,290	63	79	0	71,796	3371	3.3	549
Gombe	883	0	747	0	25	0	22,919	3354	0.0	111
Imo	589	6	564	13	12	0	6,198	690	0.9	13
Jigawa	325	0	308	0	11	0	2,971	2	0.0	6
Kaduna	2,558	50	2,462	70	42	1	24,068	1243	4.0	54
Kano	1,741	1	1,681	6	54	0	47,992	405	0.2	6
Katsina	904	9	879	10	24	0	23,245	657	1.4	1
Kebbi	93	0	84	0	8	0	905	31	0.0	1
Kogi	5	0	3	0	2	0	264	3	0.0	0
Kwara	1,050	0	982	0	25	0	6,211	72	0.0	43
Lagos	20,645	623	19,429	4,179	207	3	139,551	2288	27.2	1,009
Nasarawa	478	9	325	0	13	0	6,746	1885	0.5	140
Niger	273	12	249	7	12	0	5,639	1550	0.8	12

STATES	CONFIRMED		RECOVERIES		DEATHS		TESTING			ACTIVE CASES
	Total	Last Week	Total	Last Week	Total	Last Week	Total	Last Week	Test Positivity rate (One Week)*	
<b>Ogun</b>	1,980	41	1,752	11	29	1	14217	688	6.0	199
<b>Ondo</b>	1,657	14	1,585	40	36	0	8445	109	12.8	36
<b>Osun</b>	908	5	828	12	20	2	5292	65	7.7	60
<b>Oyo</b>	3,415	111	2,556	3	41	1	23411	715	15.5	818
<b>Plateau</b>	3,581	44	3,175	177	33	0	33876	861	5.1	373
<b>Rivers</b>	2,709	48	2,596	100	59	0	41714	3093	1.6	54
<b>Sokoto</b>	162	0	145	0	17	0	4978	806	0.0	0
<b>Taraba</b>	117	9	103	14	6	0	1744	362	2.5	8
<b>Yobe</b>	79	0	66	0	8	0	998	48	0.0	5
<b>Zamfara</b>	79	0	73	0	5	0	1123	12	0.0	1
<b>Total</b>	<b>61,440</b>	<b>1,174</b>	<b>56,611</b>	<b>4,876</b>	<b>1,125</b>	<b>10</b>	<b>590,635</b>	<b>25,699</b>	<b>4.6</b>	<b>3,704</b>

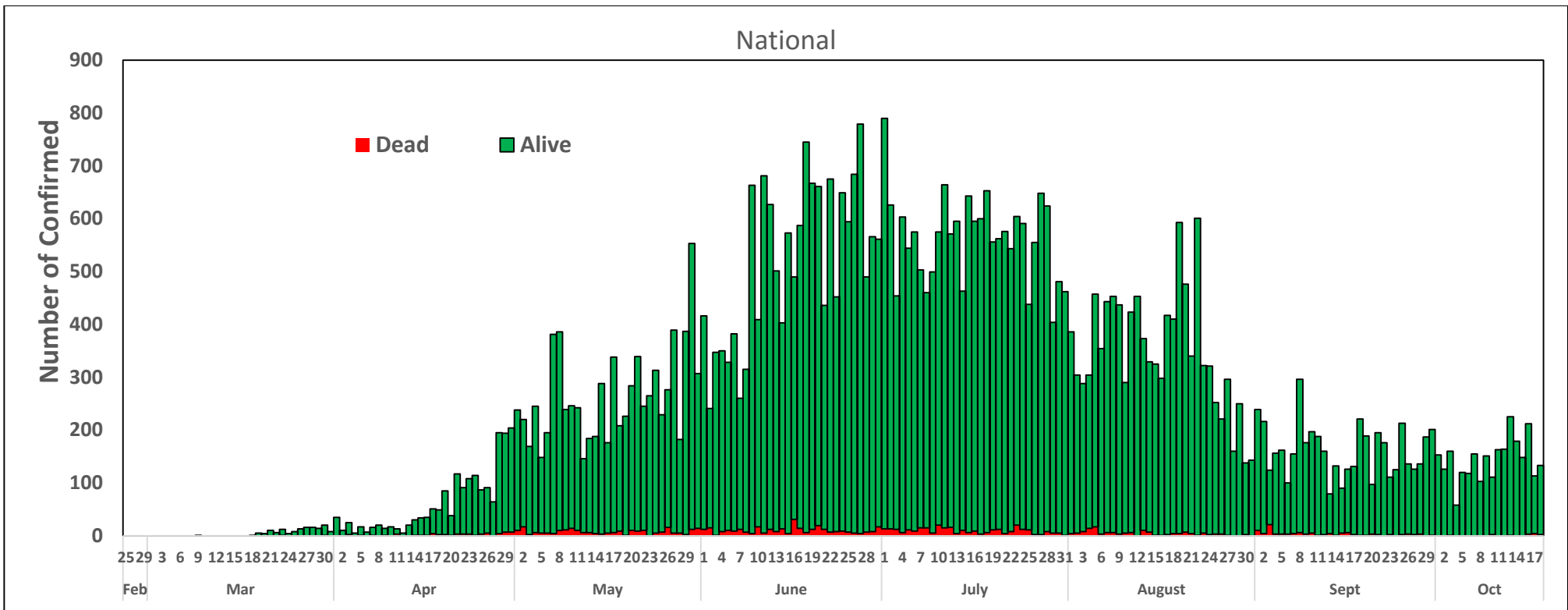
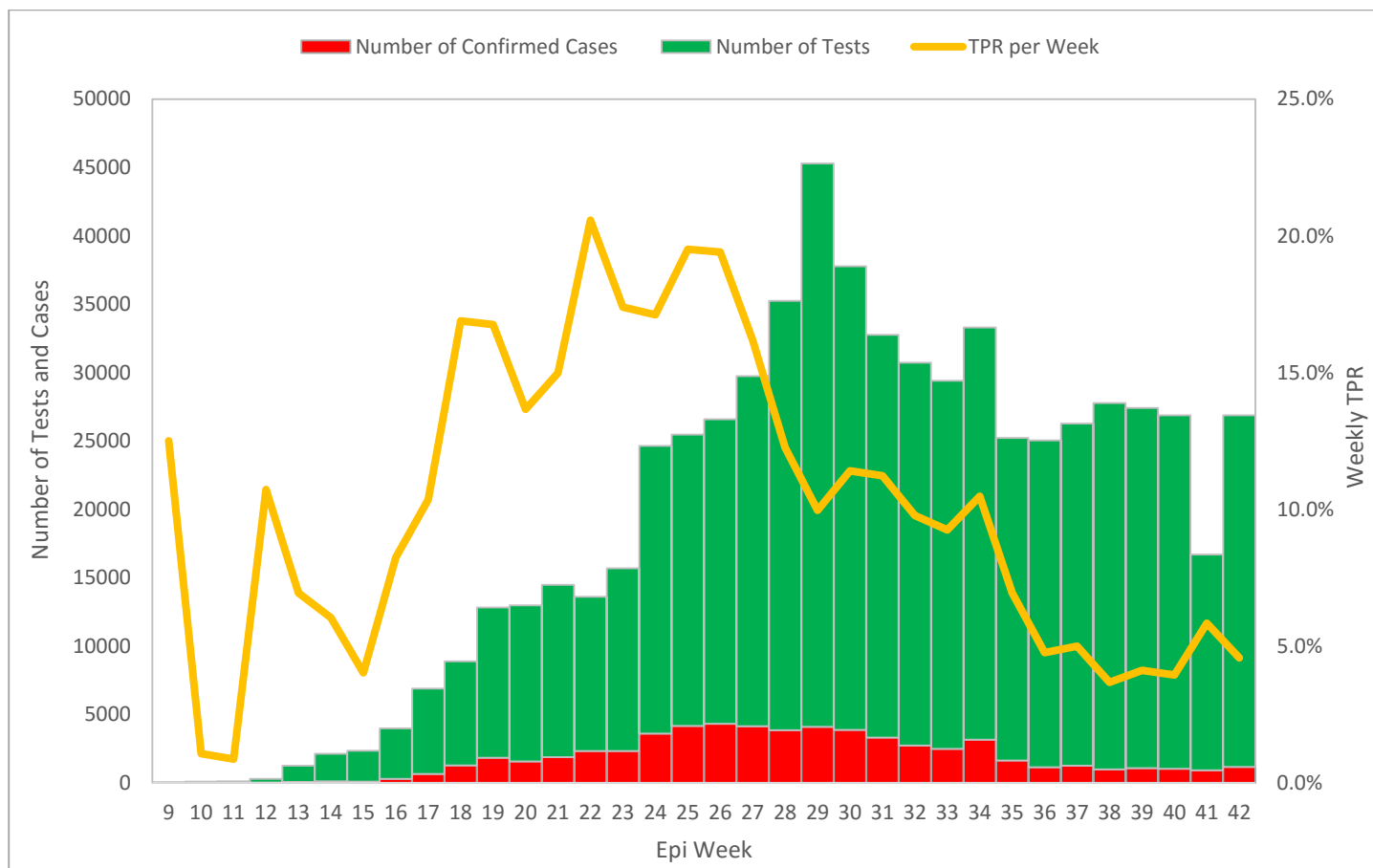


Figure 2: Daily Epidemic Curve of Confirmed Cases (WK9 – WK42) as reported per day

## SELECTED CHARTS: TESTING ANALYSIS



TPR- Test positivity rate

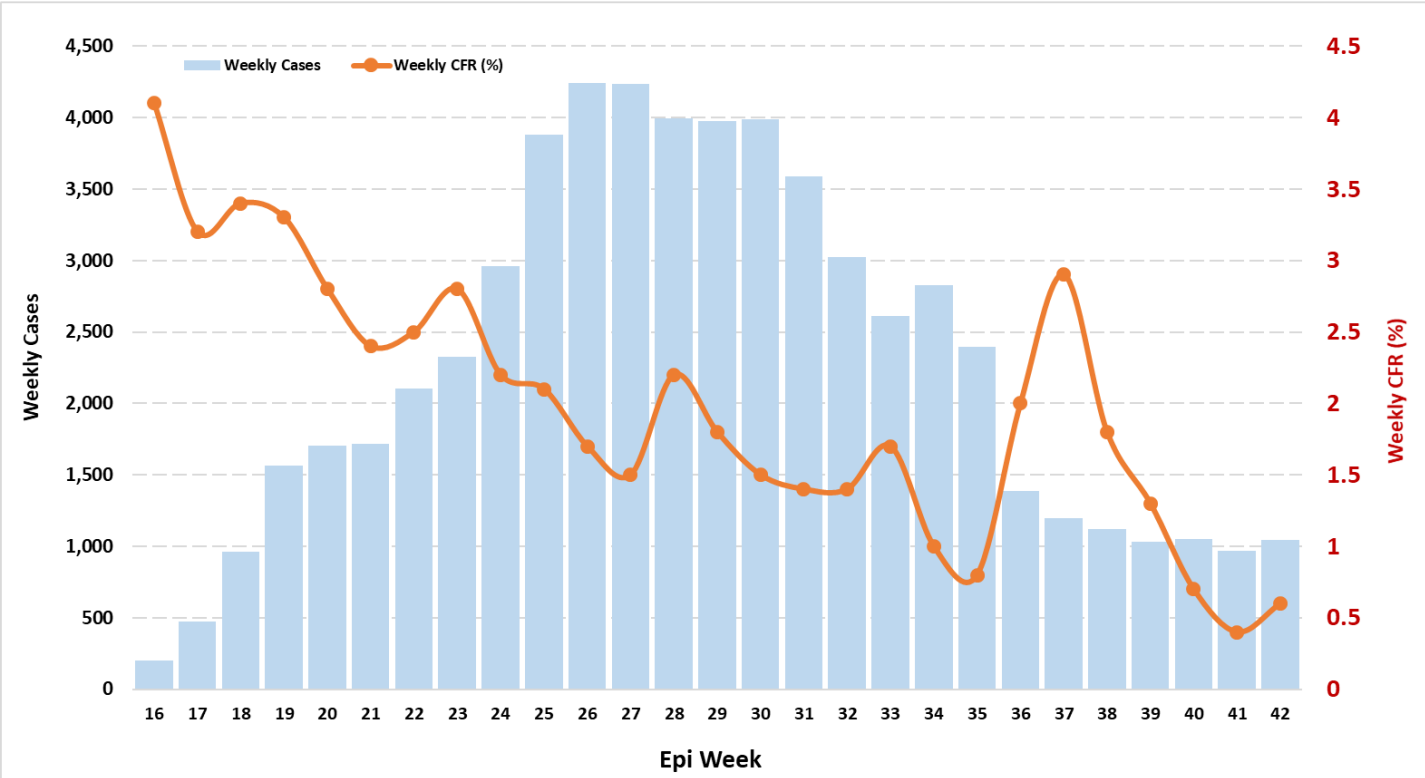
## TESTS CARRIED OUT FOR RETURNING PASSENGERS

Over the last week, the following laboratories carried out COVID-19 tests for returning passengers:

<b>54Gene (Lagos):</b>	<b>13</b>
<b>54Gene (FCT):</b>	<b>211</b>
<b>MEDICAID (FCT):</b>	<b>71</b>
<b>CEDARCREST (FCT):</b>	<b>138</b>
<b>DNA Labs (FCT):</b>	<b>91</b>

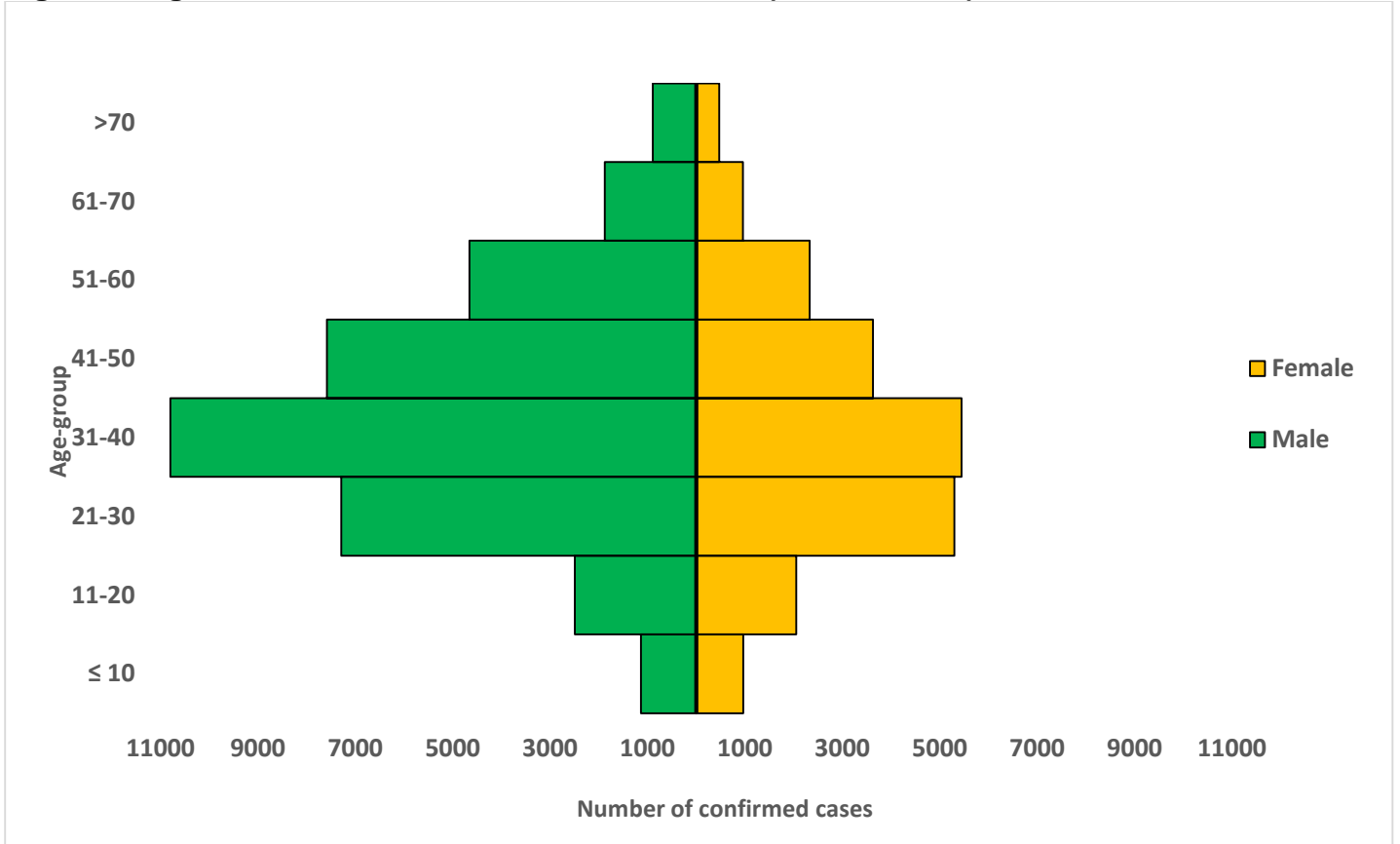
# SELECTED CHARTS : FATALITY TRENDS

Trends in Weekly CFR (%) (2 wk moving avg) from week 16 to week 42

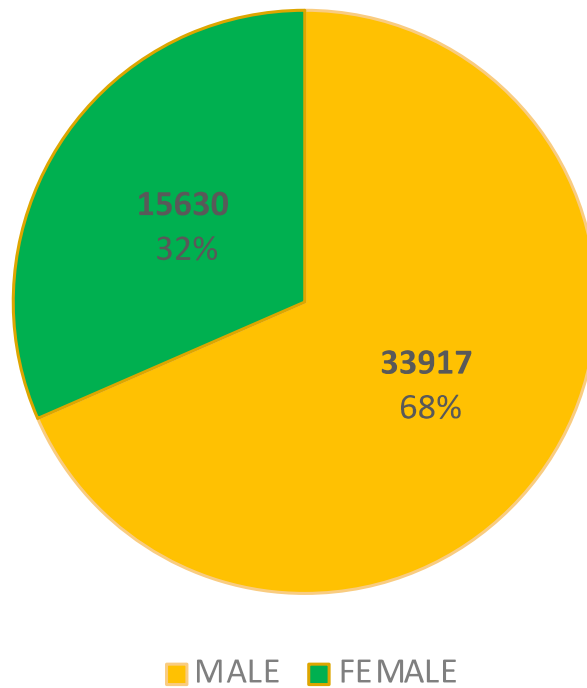


## SELECTED CHARTS: DEMOGRAPHIC ANALYSIS

Figure 3: Age-Sex Distribution of Confirmed Cases (WK9 – WK42)



## GENDER BREAKDOWN



## TABLE OF RESPONSE COMMODITIES DISTRIBUTED TO STATES IN THE LAST 1 WEEK

12 <sup>th</sup> -18 <sup>th</sup> October, 2020	PERSONAL PROTECTIVE EQUIPMENT														
	LABORATORIES ACROSS STATES	COVERALL PPE	FACE SHIELD	EXAMINATI ON GLOVES	GOGGLES	SHOE COVER	N95 FACE MASK	BIOHAZARD BAG	GAUZE ROLL	HYPOCH LORITE 3.5L	HYPOCH LORITE 1L	GOWN	LIQUI D HAND WASH	HAND SANITIZ ER 100ML	FACE MASK SURGIC AL
<b>KADUNA LABS</b> ABU teaching hospital lab, DNA Reference Lab	200	40	20	20	200	200	200	-	-	-	-	-	-	-	-
<b>UATH LAB</b>	100	30	20	20	100	100	-	-	-	-	-	-	-	-	-
<b>AKWAIBOM LAB</b> University of Uyo Teaching Hospital (Akwa Ibom Molecular Diagnostic) Lab.	200	40	6	20	200	200	-	4	2	-	-	-	-	-	-
<b>SOKOTO LAB</b> Usman Danfodio university teaching hospital Lab (Centre for Advanced Medical Research and Training)	200	30	20	20	200	200	-	-	-	-	-	-	-	-	-
NRL GADUWA	300	300	30	-		1300	200	-	4	24	200	40	144	2000	

NB: Ahmadu Bello University (ABU); University of Abuja Teaching Hospital (UATH)



## IN FOCUS: MARKING GLOBAL HANDWASHING DAY

Nigeria joined other countries around the world in marking World Handwashing Day on 15<sup>th</sup> October. For several decades, proper hand hygiene has been proven to be a public health measure against a range of infectious diseases.

The theme for this year was ‘Hand Hygiene for All’, a call to action highlighting the fact that access to soap and clean water is not luxury meant for a few but essentials that should be available to all. We cannot afford to leave anyone behind, because the health of one can affect the health of all. Clean, running water and soap should be accessible in our homes, schools, health facilities, restaurants and public spaces.

Behavioural change is the next critical step because adhering to hand hygiene practices will determine the effectiveness of public health interventions for COVID-19 and other infectious diseases in our country. In 2019, we launched the “Turn Nigeria Orange” Project to strengthen the culture of hand hygiene and Infection Prevention and Control. This is particularly to strengthen the capacity of our healthcare institutions by helping them set up an infection control programme. Our aim is to keep our healthcare workers safe as they work to protect the lives of Nigerians and the more health facilities we reach, the more Nigerians we can reach as well. This is why infection prevention control has remained a top priority on the health agenda during this pandemic and must remain so even after the pandemic.

It is important to remember that handwashing is still the simplest preventive measure yet for COVID-19 – one that can be done in just 20 seconds. We urge everyone to promote the practice of handwashing as a way of preventing infectious diseases. Our health, and our future, are literally in our hands.

## RESPONSE

On 28<sup>th</sup> February 2020, a multi-sectoral Emergency Operations Centre (EOC) was activated at Level 3 – the highest emergency level in Nigeria – led by NCDC in close coordination with the State Public Health EOCs (PHEOC) and through the deployment of **43** RRTs to states.

## COORDINATION

- **Finalising plans with State Epidemiologists, response technical leads and partners on coordination strategies for the Phase 2 deployment of community health volunteers**

## EPIDEMIOLOGY/SURVEILLANCE AND POINT OF ENTRY

- **Working to enable more states adapt complete standardisation of result release through SORMAS across all surveillance data collection sites**
- Engaging with partners on the planned deployment of additional 1,000 Community Health Volunteers

## LABORATORY

- **Ongoing Strengthening Laboratory Management Toward Accreditation (SLMTA) baseline audit for Polymerase Chain Reaction testing laboratories in Lafia, Nasarawa State and ISTH Irrua, Edo State**
- Trained staff for sample collection using the walk-through booths supported by partners at National Reference Laboratory (NRL), Gaduwa, FCT

## INFECTION PREVENTION AND CONTROL (IPC)

- **Ongoing finalisation of plans to train uniformed services health facility focal persons in the South-West zone**
- Trained community health workers from Edo and Oyo States supported by partners

## LOGISTICS

- **Continued update and sharing logistics data harmonisation report with PTF**

## RESEARCH

- Ongoing training of Oyo State research team on the "prospective cohort study of COVID-19 cases and contacts

## RISK COMMUNICATION

- **Bi-weekly messaging priorities and key messages developed for dissemination to stakeholders and states**
- Held planning meeting with stakeholders and partners to leverage on the Antimicrobial Resistance (AMR) awareness week to promote COVID-19 messaging

## NEXT STEPS

- Finalise laboratory quality assurance plan
- Review capacity of COVID testing laboratories to activate for Lassa season 2020/21
- Hold technical meeting with tertiary education stakeholders on adoption of safe reopening templates
- Plan training of on-air personalities

## PREPAREDNESS

Since the confirmation of the first case on 27<sup>th</sup> February 2020, the NCDC has released advisories and statements to help Nigerians and affected groups in particular to respond to the pandemic

- NCDC published guidance on safe school re-opening: [Public Health guidance for Safe School re-opening in Nigeria](#)
- NCDC published second interim guidance – Infection Prevention and Control: [Recommendations during health care provision for suspected and confirmed cases of COVID-19](#)
- NCDC recently published the first edition of a quick reference guide on setting up sample collection centre - [A step by step guide on setting up a sample collection centre](#)
- NCDC has launched an online course on [Infection, Prevention and Control \(IPC\) for COVID-19](#) NCDC eLearning platform
- Ahead of forthcoming elections in the country, NCDC has issued [Guidelines for Conducting Elections During the COVID-19 Outbreak in Nigeria](#).
- To protect our elders, and those with pre-existing medical conditions, NCDC has issued an [Advisory for Vulnerable Groups](#).
- NCDC has released [guidelines on the re-opening of places for worship](#).
- NCDC has released [Strategies to Improve Surveillance for COVID-19 Guidance for States](#)
- The Nigeria Police Force has released COVID-19 operational guidelines for the [Police and other Law Enforcement Agencies](#) in Nigeria
- Guidelines have been issued for the [safe transportation of remains of persons suspected or confirmed to have died of COVID-19](#)
- Information on diagnostics of the COVID-19 virus can be found in our [detailed FAQ document](#).
- To increase our testing capacity, NCDC has issued guidelines for the [integration of private labs](#).
- Guidelines for [businesses and employers](#) have been updated.
- NCDC has updated its [case definition](#) , [community case definition](#) and [case management guide](#).
- NCDC releases periodic [public health advisories](#) to Nigerians on the COVID-19 disease.
- To adhere to post-lockdown measures, NCDC has released an [advisory on the use of face masks](#), as well as information on the [Use of Cloth face masks](#) and [how to make your cloth face masks](#).
- NCDC has released guidelines for the [management of pregnant women and nursing mothers](#) during the pandemic.
- To address burials of loved ones who die from COVID-19, guidelines have been issued to advise on the [management of dead bodies](#).
- For health centres managing cases, the following documents have been released- a guideline for the [Rational Use of Personal Protective Equipment in the care of COVID-19 cases](#).
- As part of plans to increase the testing capacity of the country, the NCDC published a [National Strategy to Scale Up Access to Coronavirus Disease Testing in Nigeria](#) document.
- The Presidential Task Force has published policies and announcements on COVID-19 [available on the website of the Presidency](#) – including presidential addresses, task force updates and information on livelihood and economic support.

## INFORMATION RESOURCES

- Nigeria Centre for Disease Control: [www.covid19.ncdc.gov.ng](http://www.covid19.ncdc.gov.ng) | [www.ncdc.gov.ng](http://www.ncdc.gov.ng)
- Nigerian Presidency Website on COVID-19: [www.statehouse.gov.ng/COVID19](http://www.statehouse.gov.ng/COVID19)
- Africa CDC: [www.africa.cdc.org](http://www.africa.cdc.org)
- African Arguments COVID-19 Africa Tracker: [africanarguments.org/coronavirusinafrica](http://africanarguments.org/coronavirusinafrica) (**source for Africa updates**)
- WHO Coronavirus Disease (COVID-19) Dashboard (**source for global updates**) <https://covid19.who.int/>