



SITUATION REPORT

Nigeria Centre For Disease Control and Prevention (NCDC)

NCDC.GOV.NG

PLOT 800 EBITU UKIWE STREET, JABI ABUJA, NIGERIA TOLL FREE CALL: 6232 E:info@ncdc.gov.ng

@NCDCgov   

TITLE:	UPDATE ON MONKEYPOX (MPX) IN NIGERIA
SERIAL NUMBER:	27
EPI-WEEK:	43
DATE:	October 30, 2022

Table 1 – Key Indicators

Key Indicators	Number
Total confirmed cases in Epi Week 43, 2022	19
Total suspected cases from January 1 st to October 30 th , 2022 (Epi week 1 to 43)	1549
Total confirmed cases from January 1 st to October 30 th , 2022 (Epi week 1 to 43)	604
Total deaths from January 1 st to October 30 th , 2022 (Epi week 1 to 43)	7
Total deaths Sept 2017 - October 30 th , 2022	15
Total confirmed cases in 2017	88
Total confirmed cases in 2018	49
Total confirmed cases in 2019	47
Total confirmed cases in 2020	8
Total confirmed cases in 2021	34
Grand total confirmed cases (Sept 2017 – October 30 th , 2022)	830
Grand total suspected cases (Sept 2017 – October 30 th , 2022)	2061

- Ninety (90) new suspected cases reported in Epi week 43, 2022 (24th to 30th October 2022) from sixteen (16) states and FCT – Plateau (20), Lagos (14), Bayelsa (9), Imo (8), Abia (7), FCT (5), Kaduna (5), Anambra (4), Ondo (4), Delta (3), Adamawa (2), Benue (2), Osun (2), Ogun (2), Edo (1), Niger (1) and Jigawa (1).
- Of these suspected cases, nineteen (19) new confirmed cases have been recorded in Epi week 43 from eight (8) states and FCT – Lagos (6), Bayelsa (3), Delta (2), Imo (2), Kaduna (2), Abia (1), FCT (1), Ogun (1) and Plateau (1).
- From 1st January to 30th October 2022, Nigeria has recorded 1549 suspected cases with 604 confirmed cases (397 male, 207 female) from thirty-one (31) states and FCT – Lagos (154), Abia (46), Bayelsa (36), Imo (33), Rivers (31), Ondo (30), Ogun (28), Delta (26), Edo (21), Anambra (21), FCT (19), Adamawa (16), Nasarawa (14), Plateau (13), Kaduna (12), Akwa Ibom (11), Benue (10), Oyo (10), Ebonyi (9), Cross River (9), Kwara (8), Borno (8), Katsina (8), Taraba (7), Gombe (6), Kano (5), Kogi (4), Osun (4), Kebbi (2), Niger (1), Bauchi (1) and Enugu (1).
- Seven (7) associated deaths were recorded from 7 states in 2022 – Delta (1), Lagos (1), Ondo (1) and Akwa Ibom (1), Kogi (1), Taraba (1) and Imo (1). **CFR 1.2%**

...PROTECTING THE HEALTH OF NIGERIANS



- Overall, since the re-emergence of monkeypox in September 2017, 2061 suspected cases have been reported from 36 states and FCT in the country with 830 (40.3%) confirmed (550 male, 280 female) from 32 states and FCT - Lagos (184), Rivers (83), Bayelsa (76), Delta (55), Abia (49), Imo (41), Edo (31), Ondo (30), Ogun (29), FCT (25), Cross River (23), Anambra (23), Akwa Ibom (18), Adamawa (16), Oyo (16), Nasarawa (16), Plateau (16), Benue (12), Kaduna (12), Ebonyi (10), Kwara (8), Borno (8), Katsina (8), Taraba (7), Gombe (6), Kano (5), Enugu (5), Kogi (4), Osun (4), Ekiti (2), Niger (2), Kebbi (2) and Bauchi (1).
- Fifteen (15) deaths have been recorded since September 2017 (CFR= 1.8%) in eleven states - Lagos (3), Edo (2), Imo (2), Cross River (1), FCT (1), Rivers (1), Ondo (1) Delta (1), Akwa Ibom (1), Taraba (1) and Kogi (1).

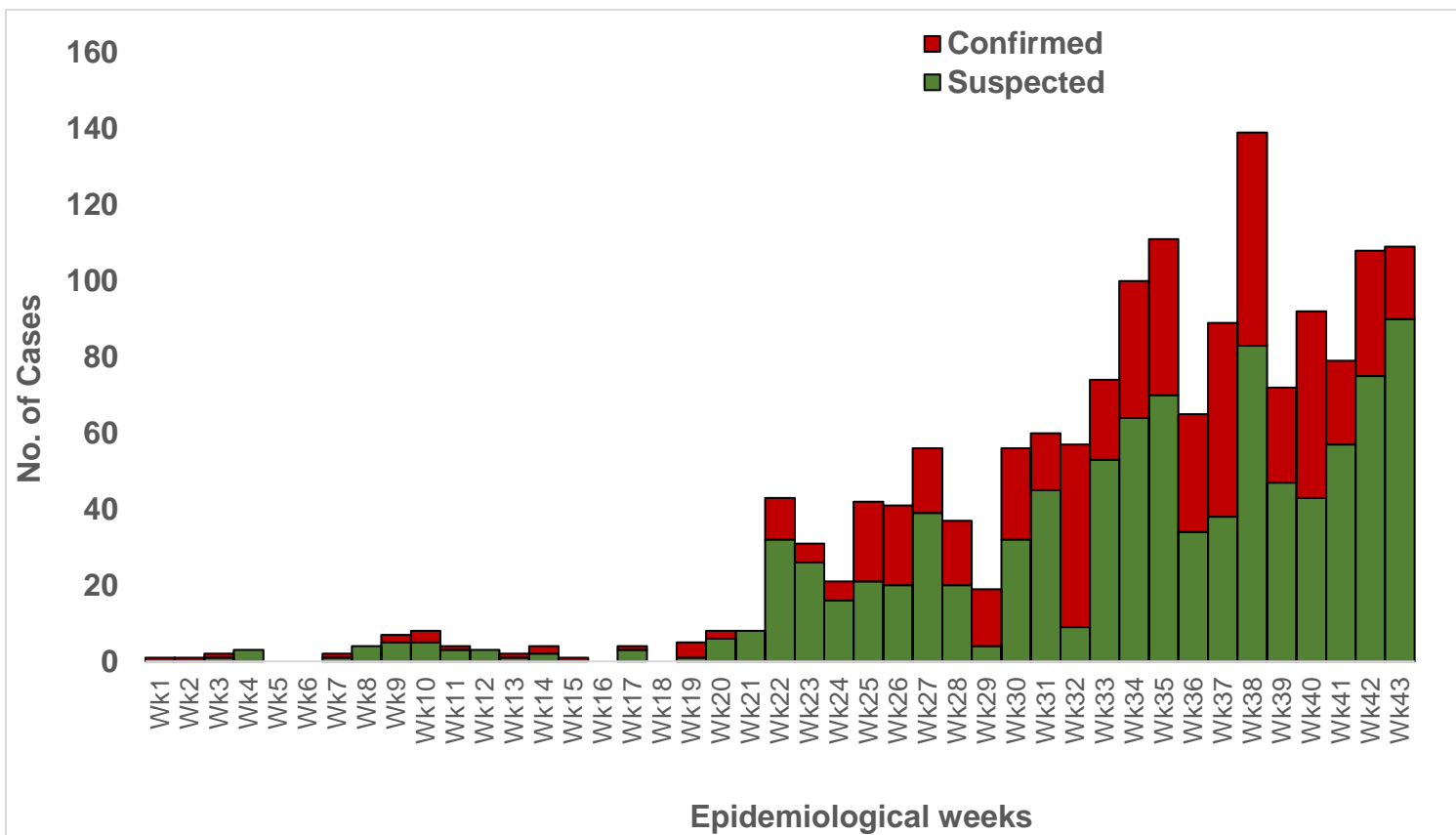


Figure 1: Epidemic Curve of Suspected & Confirmed MPX Cases Jan 1st, 2022 till date

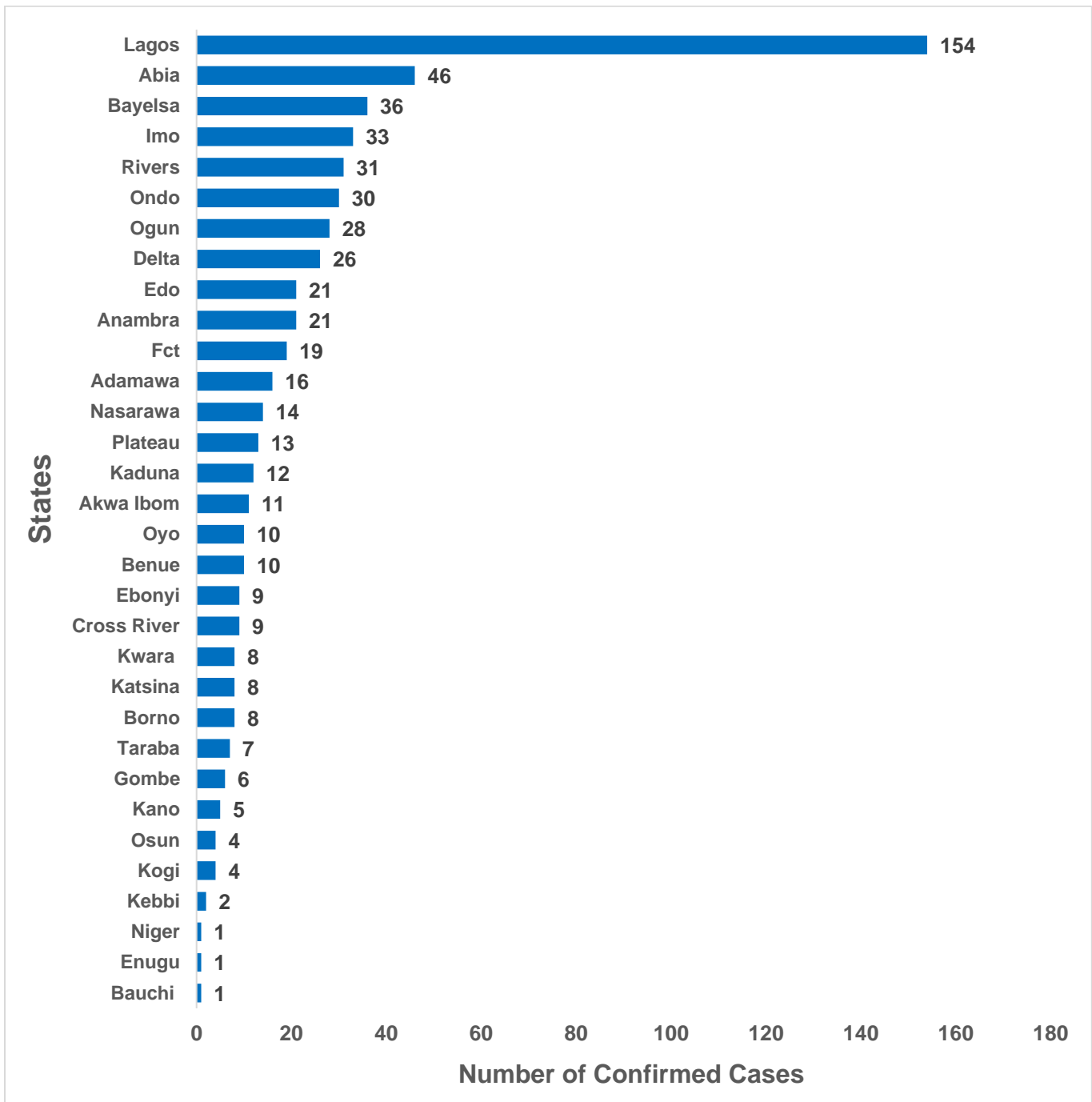


Figure 2: Bar chart Showing confirmed monkeypox cases by state from January 1st – 30th October 2022

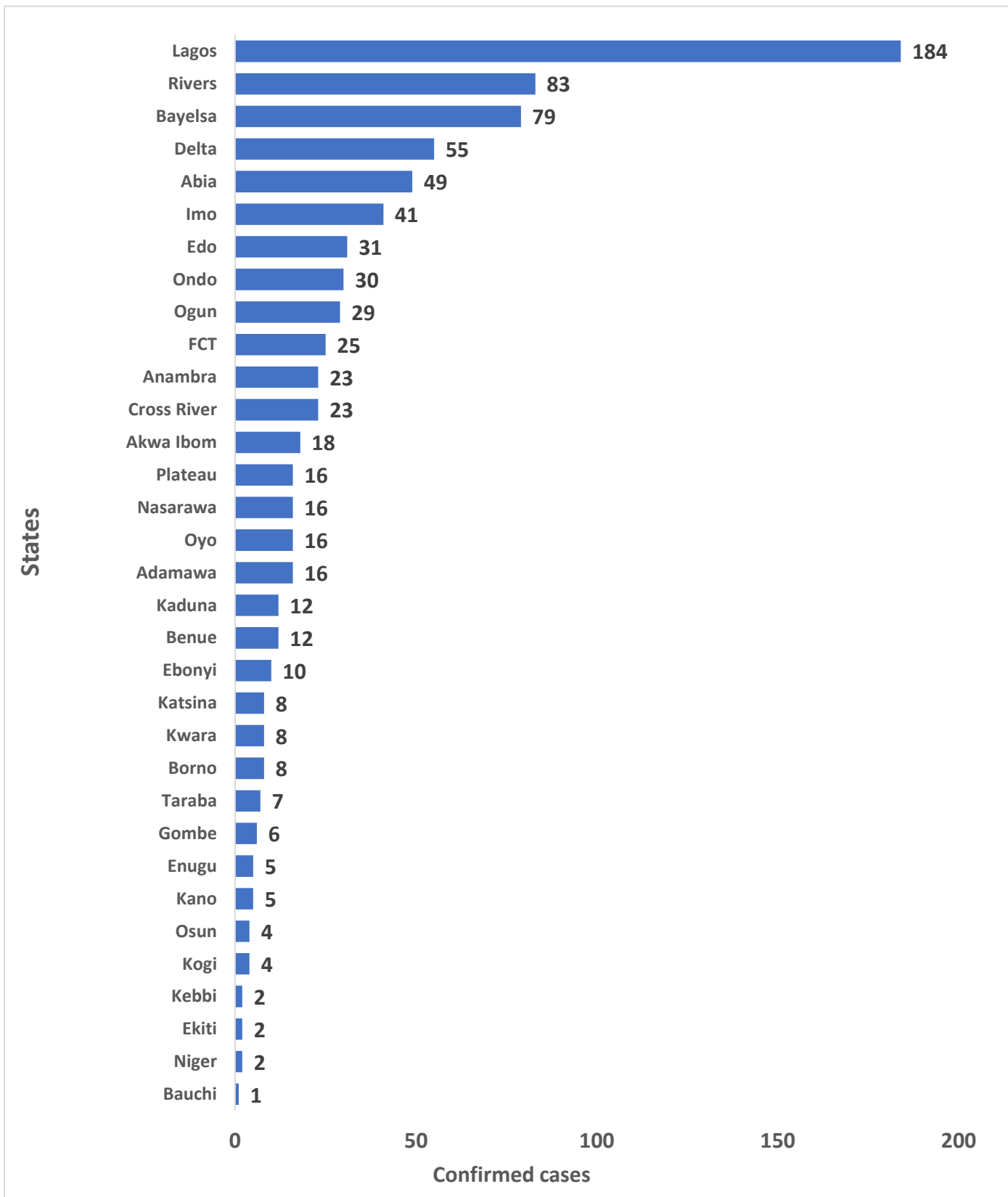


Figure 3: Bar chart Showing confirmed monkeypox cases by state, September 2017 – 30th October 2022

Table 2: Nigeria confirmed monkeypox cases by state, September 2017 – 30th October 2022

S/N	State	2017	2018	2019	2020	2021	2022	Total
1	Lagos	4	1	15	4	6	154	184
2	Rivers	25	14	7	1	5	31	83
3	Bayelsa	19	11	7	0	6	36	79
4	Delta	3	6	10	1	9	26	55
5	Abia	1	2	0	0	0	46	49
6	Imo	5	2	1	0	0	33	41
7	Edo	4	1	1	0	4	21	31
8	Ondo	0	0	0	0	0	30	30
9	Ogun	0	0	0	0	1	28	29
10	FCT	5	0	0	0	1	19	25
11	Cross River	9	3	1	0	1	9	23
12	Anambra	0	1	1	0	0	21	23
13	Akwa Ibom	6	0	1	0	0	11	18
14	Adamawa	0	0	0	0	0	16	16
15	Oyo	1	3	2	0	0	10	16
16	Nasarawa	1	1	0	0	0	14	16
17	Plateau	0	2	0	1	0	13	16
18	Benue	2	0	0	0	0	10	12
19	Kaduna	0	0	0	0	0	12	12
20	Ebonyi	0	0	0	1	0	9	10
21	Borno	0	0	0	0	0	8	8
22	Kwara	0	0	0	0	0	8	8
23	Katsina	0	0	0	0	0	8	8
24	Taraba	0	0	0	0	0	7	7
25	Gombe	0	0	0	0	0	6	6
26	Kano	0	0	0	0	0	5	5
27	Enugu	1	2	1	0	0	1	5
28	Kogi	0	0	0	0	0	4	4
29	Osun	0	0	0	0	0	4	4
30	Niger	0	0	0	0	1	1	2
31	Ekiti	2	0	0	0	0	0	2
32	Kebbi	0	0	0	0	0	2	2
33	Bauchi	0	0	0	0	0	1	1
	Grand Total	88	49	47	8	34	604	830

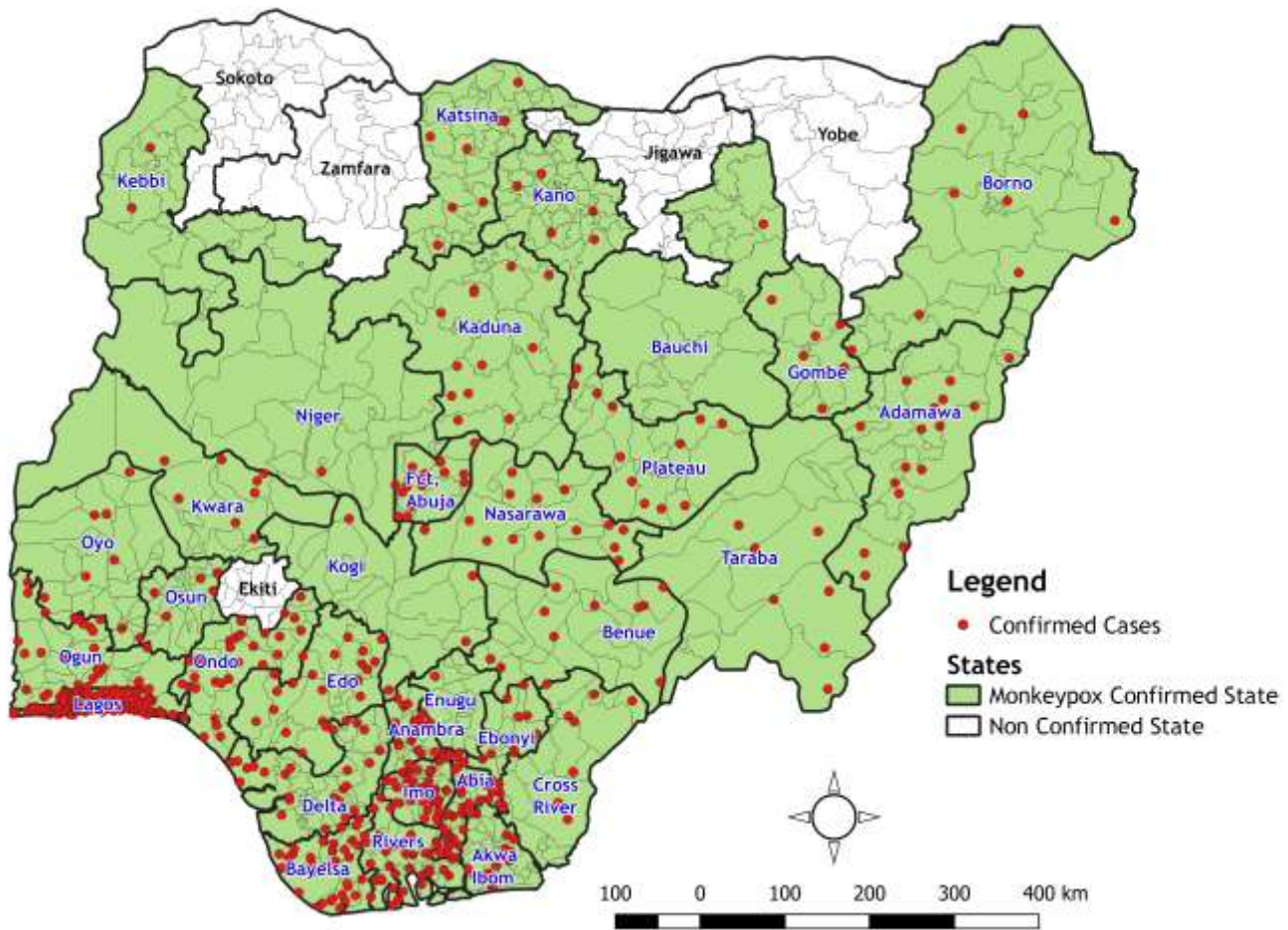


Figure 4: Map of Nigeria Showing States with Confirmed MPX Cases from January 2022 till date (31 states and FCT)

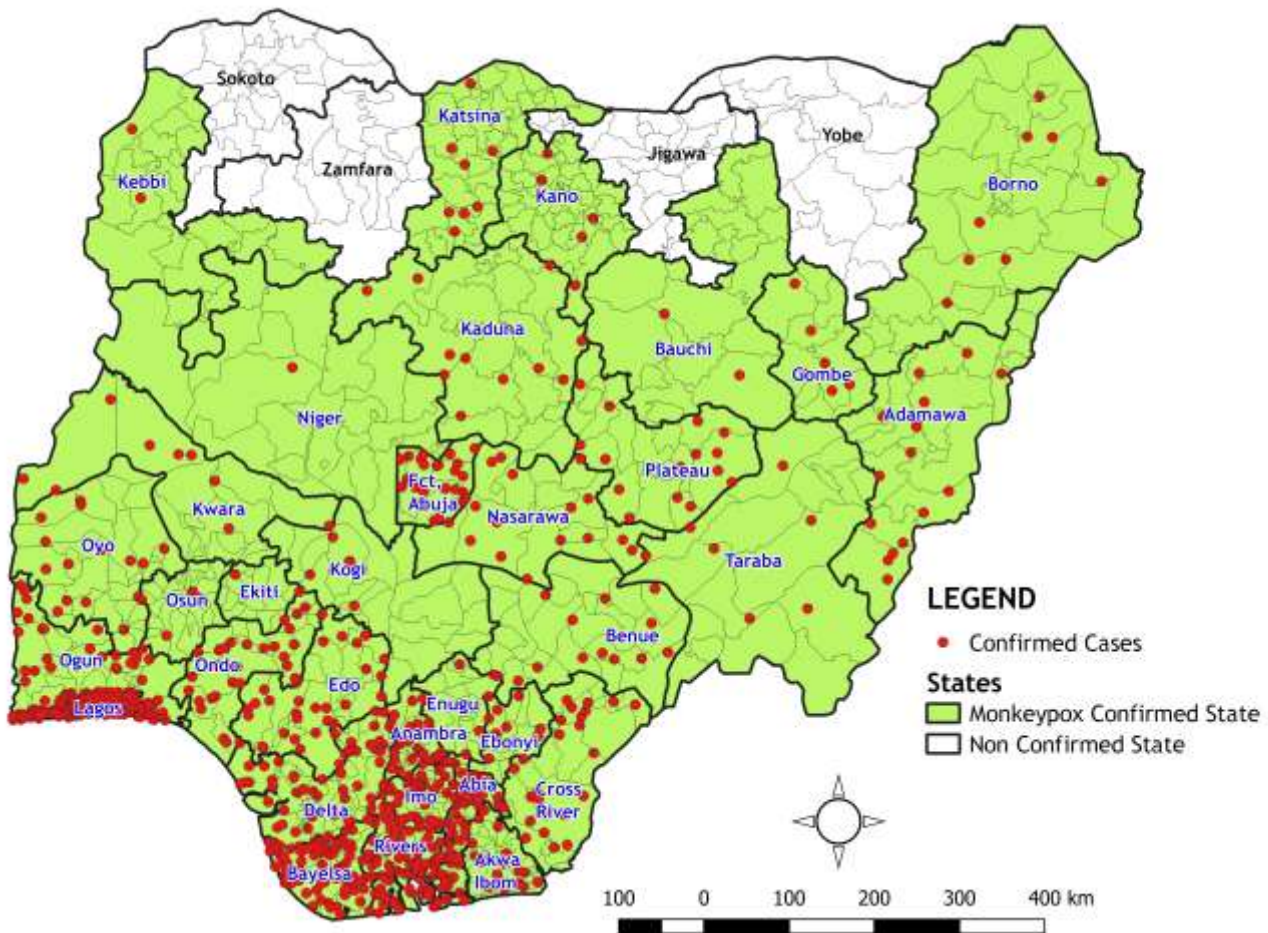


Figure 5: Map of Nigeria Showing States with Confirmed MPX Cases from September 2017 till date (32 states and FCT)

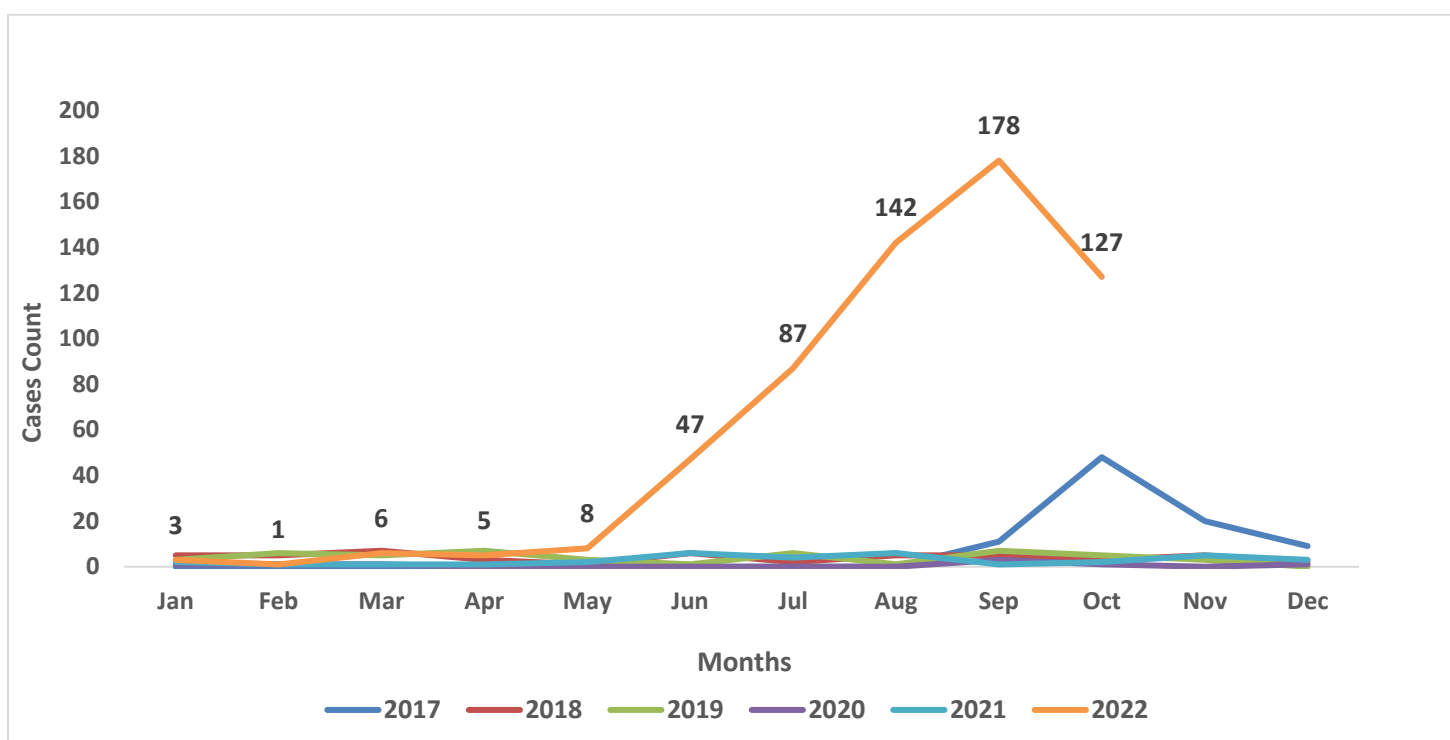


Figure 6: Nigeria confirmed Monkeypox cases by the year of incidence- September 2017 to 30th October 2022

Table 3: Age distribution of confirmed Monkeypox cases September 2017 – 30th October 2022

Age Group	2017	2018	2019	2020	2021	2022	Total
0-10 Years	7	5	1	0	1	98	112
11-20 Years	12	4	1	0	4	96	117
21-30 Years	34	13	13	4	10	147	221
31- 40 Years	26	17	22	4	13	171	253
41-50 Years	9	10	9	0	5	68	101
51-60 Years	0	0	1	0	1	24	26
Total	88	49	47	8	34	604	830



Figure 7: Age and sex distribution of Nigeria confirmed monkeypox cases January 1st – 30th October 2022

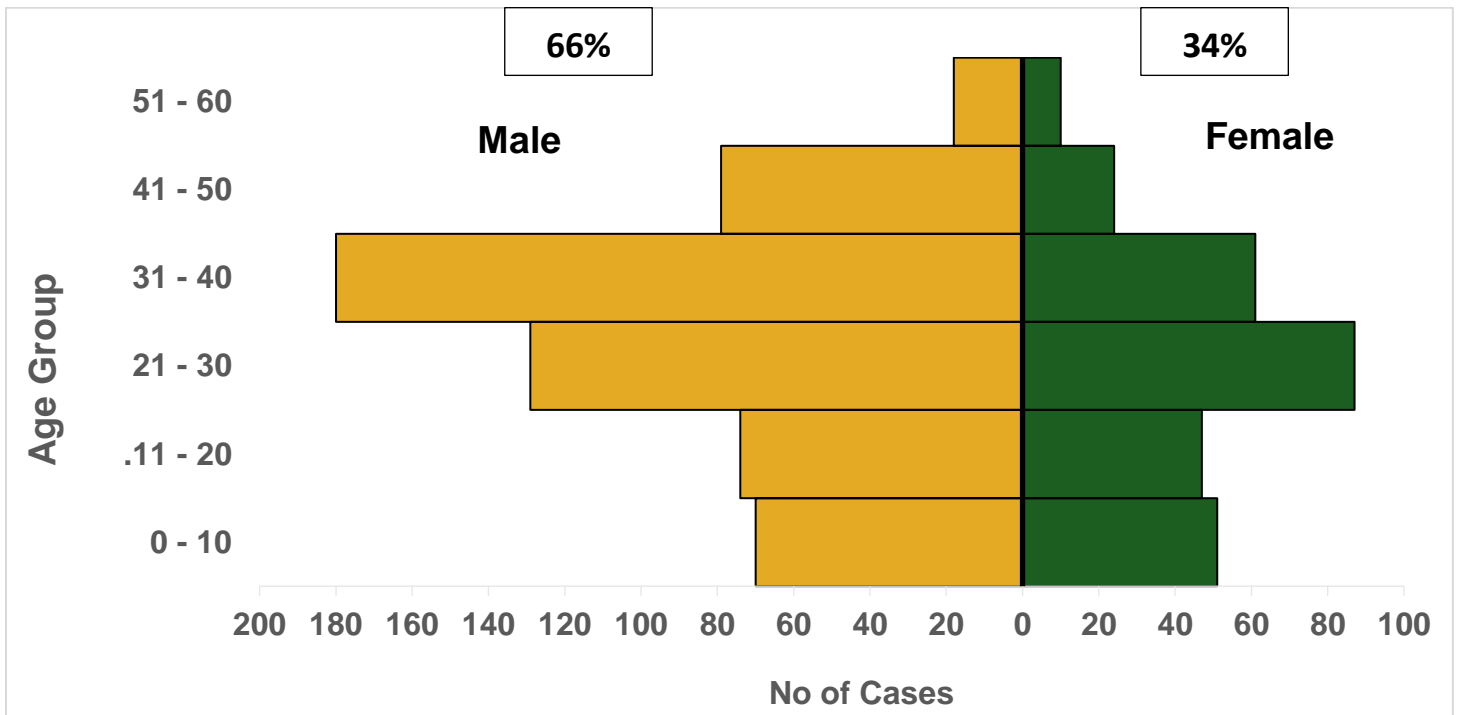


Figure 8: Age and sex distribution of Nigeria confirmed monkeypox cases September 2017 – 30th October 2022

Response activities

Pillar	Activities to date	Next steps
Coordination	Supporting the daily activities of the activated Emergency Operations Centre (EOC)	<ul style="list-style-type: none"> The multi-agency MPX Emergency Operation Centre coordinates monkeypox activities at NCDC.
Risk communication	<p>Daily tracking, monitoring and response to rumours and misinformation of Monkeypox in Nigeria</p> <p>Collaboration with partners to develop Monkeypox-specific awareness content</p>	<ul style="list-style-type: none"> Continue monitoring and analysis of Monkeypox infodemics Continue engagement of social media channels with key messages on Monkeypox prevention
Surveillance	Providing off-site support to states on case identification, reporting and response	<ul style="list-style-type: none"> Data harmonization with lab and surveillance data Continuous monitoring of MPX data on SORMAS, follow up with SORMAS SSOs on completeness of data on SORMAS Follow-up calls/emails to the state's surveillance team
IPC	<p>Submitted budgets for other approved IPC activities on the IAP.</p> <p>Finalized the SOP on environmental cleaning in healthcare area and shared with stakeholders.</p> <p>Concept note development for other approved IPC activities in the MPX IAP.</p> <p>MPX HCW infection surveillance continues across the Orange Network sites, PALS-facilities, and states</p>	<ul style="list-style-type: none"> Continue surveillance of HCW infection at states and facility levels.
Case management	<p>Follow up with confirmed cases in the states</p> <p>Inauguration of the NCDC Core protocol group to coordinate clinical trial</p> <p>Review and possible adaptation of the WHO interim clinical guideline</p>	<ul style="list-style-type: none"> Procure antivirals for use according to updated treatment guidelines and specified protocol Ensure up-to-date statistics on cases at Treatment Centre and those on home-based care

POE	Screening at points of entry for persons of Interest	<ul style="list-style-type: none"> • Continue ongoing screening activities at points of entry
Laboratory	Off-site support to states on sample collection from sites to testing lab.	<ul style="list-style-type: none"> • To train states on appropriate sample collection techniques, sample management and transport • To follow up with defaulting states to ensure appropriate filling of CIF

Notes on this report

Data Source

Information for this disease was case-based data retrieved from the National Monkeypox Emergency Operations Centre.

Case definitions

Suspected case

- An acute illness with fever $>38.3^{\circ}\text{C}$, intense headache, lymphadenopathy, back pain, myalgia, and intense asthenia followed one to three days later by a progressively developing rash often beginning on the face (most dense) and then spreading elsewhere on the body, including soles of feet and palms of the hand

Probable case

- A case that meets the clinical case definition is not laboratory-confirmed but has an epidemiological link to a confirmed case

Confirmed case

- A clinically compatible case that is laboratory confirmed

Contact

- Any person who has been in direct or indirect contact with a confirmed case since the onset of symptoms, i.e., contact with skin lesions, oral secretions, urine, stool, vomitus, blood, sexual contact, sharing a common space (anyone who has been in proximity with or without physical contact with a confirmed case)

Calculations

- Case Fatality Rate (CFR) for this disease is reported for confirmed cases only