



# CEREBROSPINAL MENINGITIS OUTBREAK IN NIGERIA

## Situation Report

(As at 17<sup>th</sup> April, 2017)

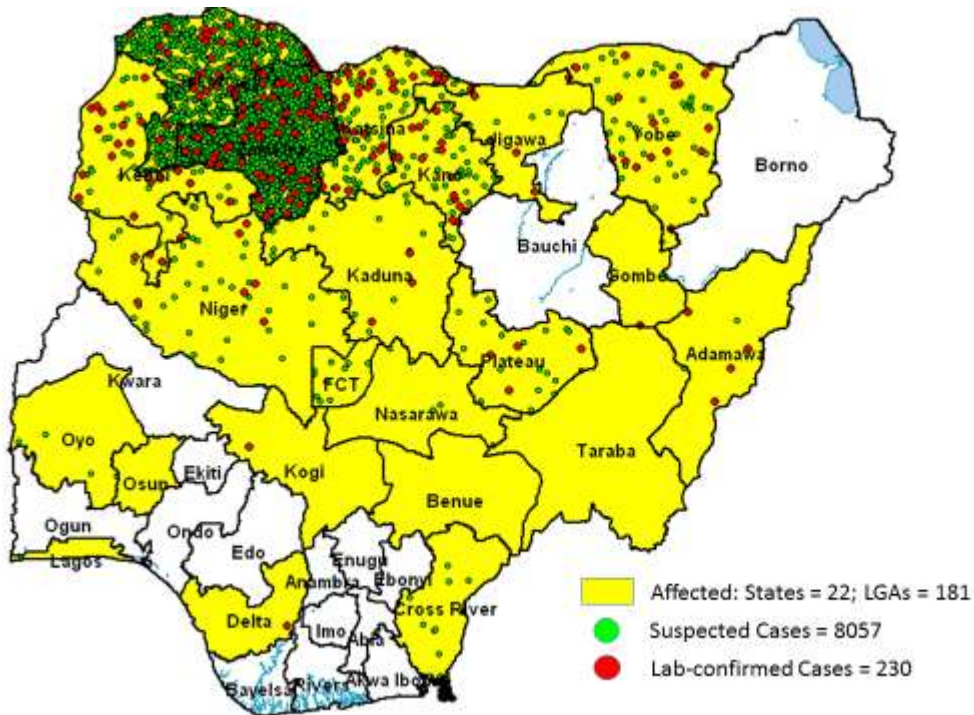
### Highlights

- The Nigeria Centre for Disease Control (NCDC) continues to coordinate a national emergency response to the ongoing cerebrospinal meningitis (CSM) outbreak, which started in December 2016.
- As at April 17, 2017, 8,057 suspected cases have been reported; 230 (3%) are laboratory confirmed. A total of 745 deaths (9.2%) have been recorded.
- During the last four weeks, a total of 38 Local Government Areas (LGAs) across six states—Zamfara, Sokoto, Katsina, Kebbi, Niger, and Yobe—reached alert/epidemic threshold status. LGAs reaching the alert threshold trigger intensified epidemic preparedness; a full outbreak response is activated in LGAs reaching the epidemic threshold.
- Although suspected case numbers have increased in Yobe State, no *Neisseria meningitidis* C cases (observed in other states) has been reported in the state.
- NCDC Rapid Response Teams (RRTs) deployed to affected states continue to provide on-site technical assistance.
- Mass vaccination campaigns are planned in Sokoto during April 24 – 28, 2017. National Primary Health Care Development Agency (NPHCDA) is coordinating the vaccination activities with NCDC and other partners.
- Distribution of medicines and laboratory commodities to affected states is ongoing.
- NCDC continues to analyse the outbreak situation and provide preparedness and response guidance to states and other jurisdictions.

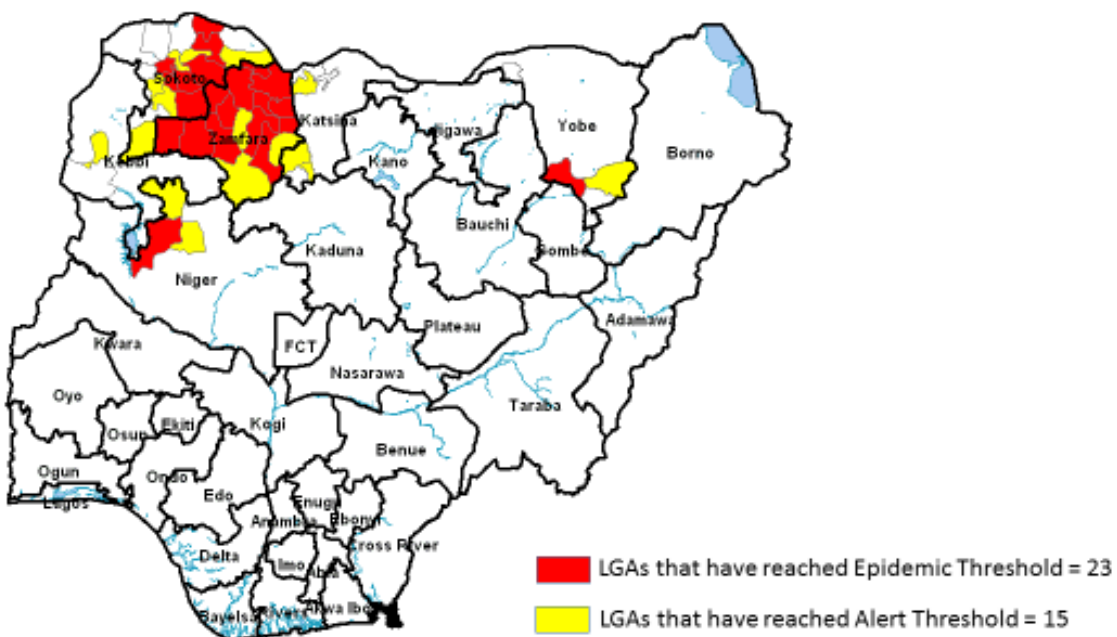
### Epi summary

- The first outbreak case was reported in Zamfara State during Epidemiology Week 50 (December 12 – 18, 2016).
- A total of 8,057 suspected cases with 745 deaths (CFR=9.2%) have been reported.
- Of the reported cases, 450 (6%) were laboratory tested; of these, 230 (51%) were confirmed positive for bacterial meningitis.
- *Neisseria meningitidis* serotype C. was the commonest cause of meningitis among all samples testing positive; 157 out of the 230 confirmed cases (68%) were due to *Neisseria meningitidis* serotype C.
- Majority of the suspected cases (51%) were in the 5-14 year age group.
- In the six affected states—Katsina, Kebbi, Niger, Sokoto, Yobe and Zamfara—a total of 15 LGAs are currently within the alert threshold and are therefore currently under intense

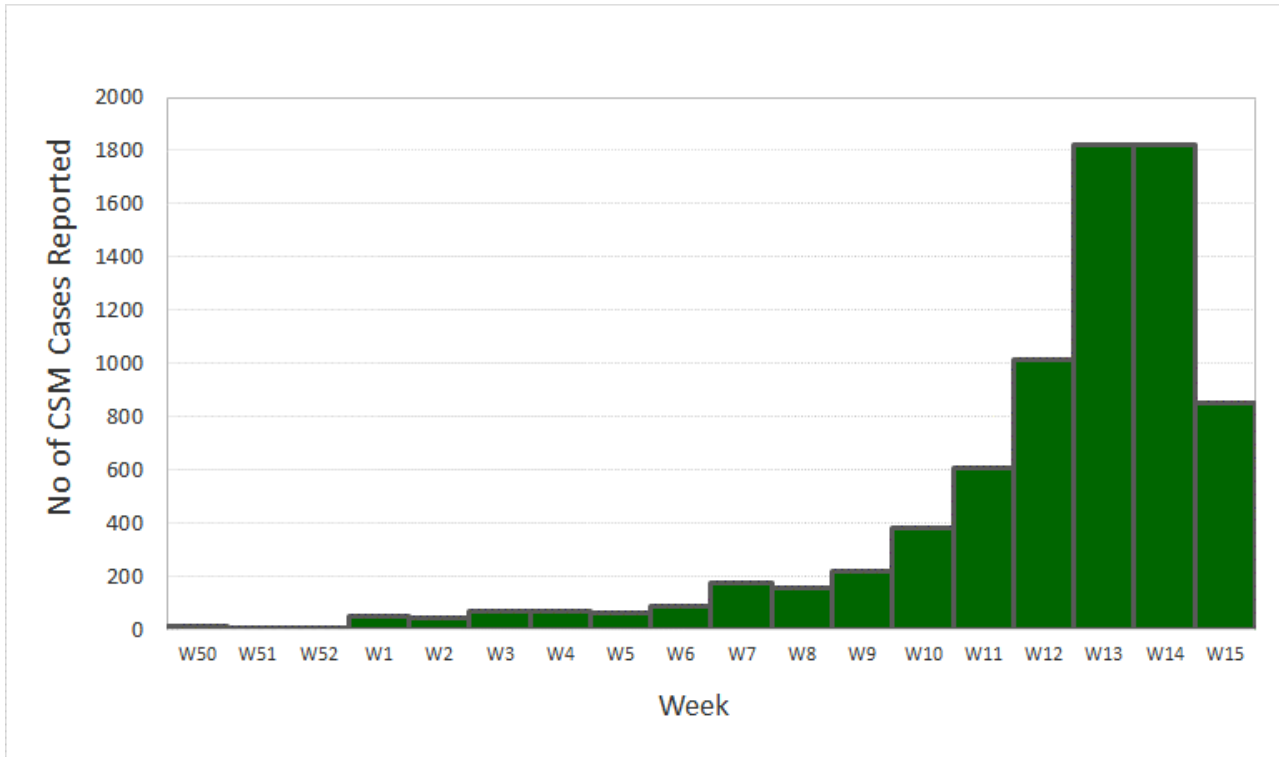
preparedness monitoring, while 23 LGAs have reached the epidemic threshold, with full outbreak investigation and control measures being implemented.



**Figure 1: Distribution of Reported CSM Cases, Wk01-15, 2017**

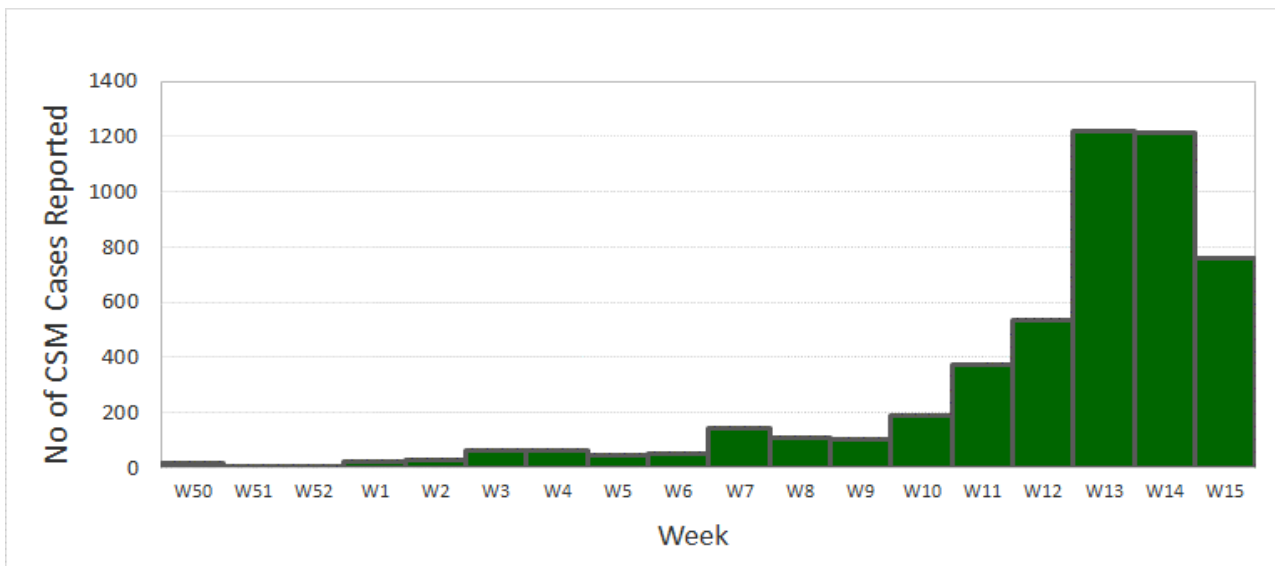


**Figure 2: State/LGAs that have crossed Alert/Epidemic Threshold, Wk11-15, 2017**

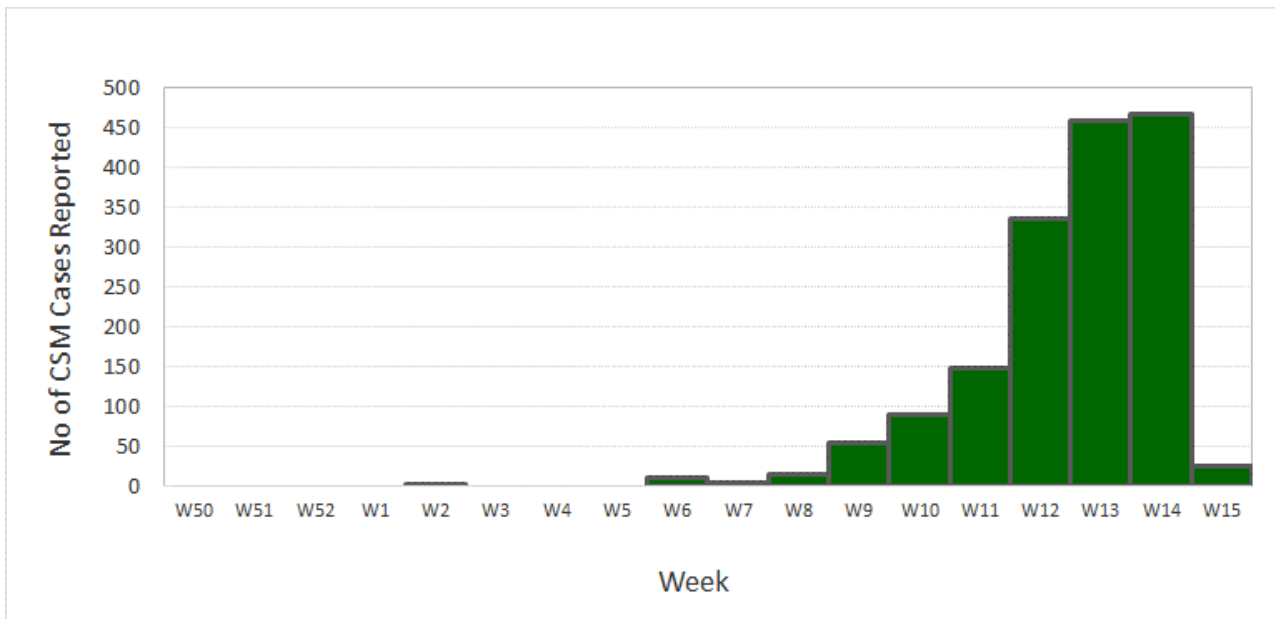


**Figure 3: Reported Cerebrospinal Meningitis Cases—Nigeria (as at April 16, 2017)**

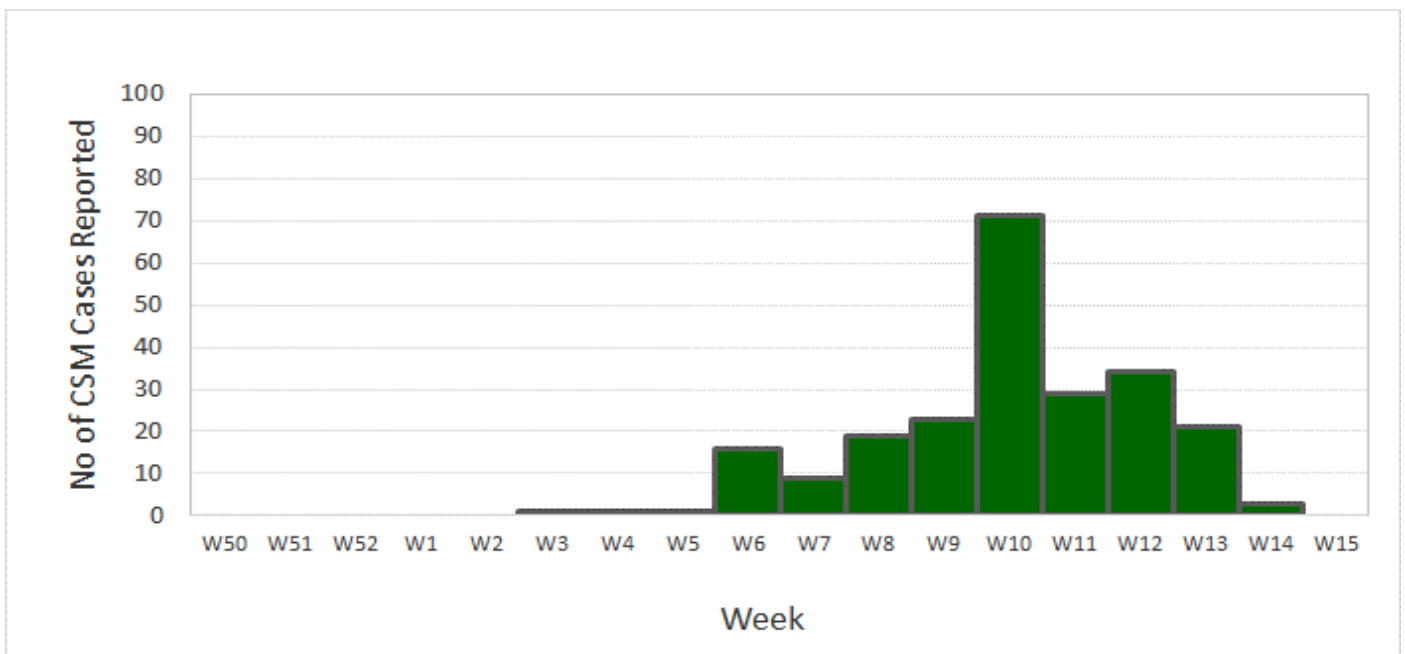
Six states have currently passed the “Outbreak” threshold: Zamfara, Sokoto, Katsina, Niger and Kebbi with NmC as the predominant sero-group and Yobe with NmA as the predominant sero-group. The epicurves in the six states are presented below.



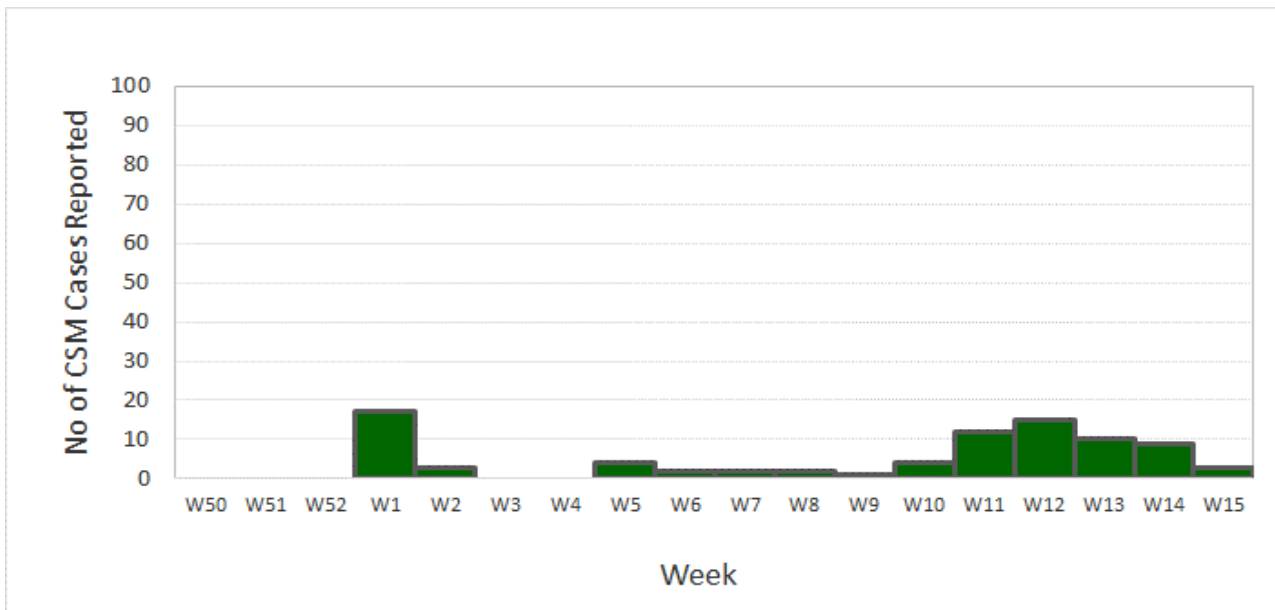
**Figure 4: Reported Cerebrospinal Meningitis Cases—Zamfara State, Nigeria (as at April 16, 2017)**



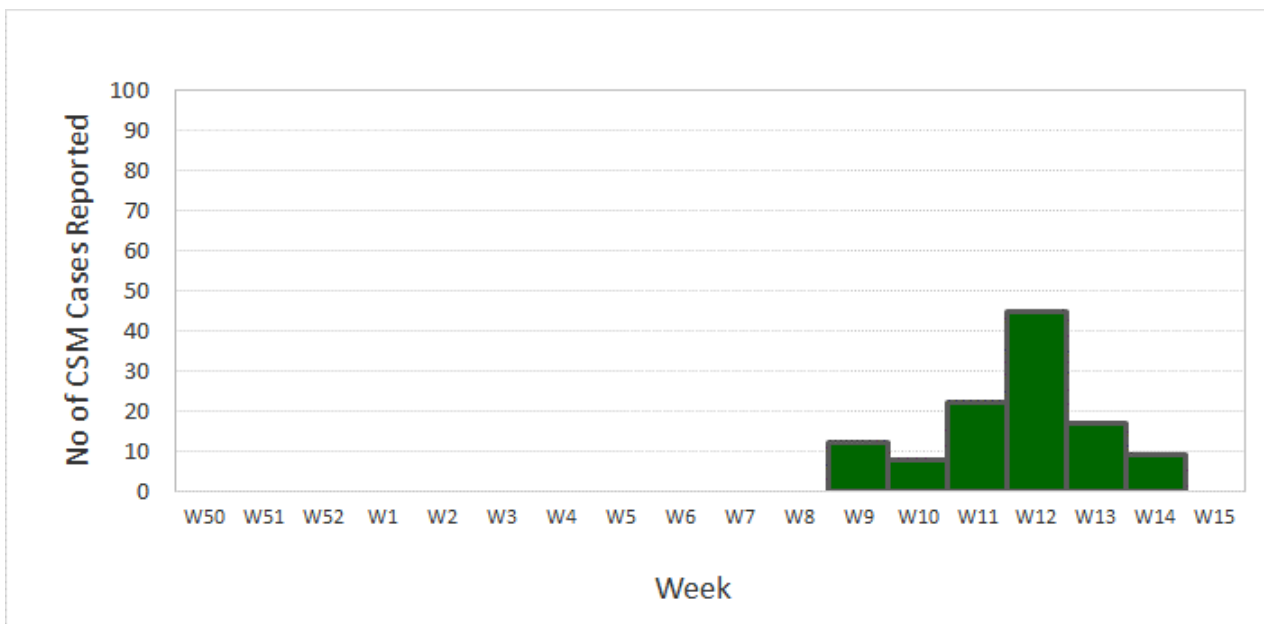
**Figure 5: Reported Cerebrospinal Meningitis Cases—Sokoto State, Nigeria (as at April 16, 2017)**



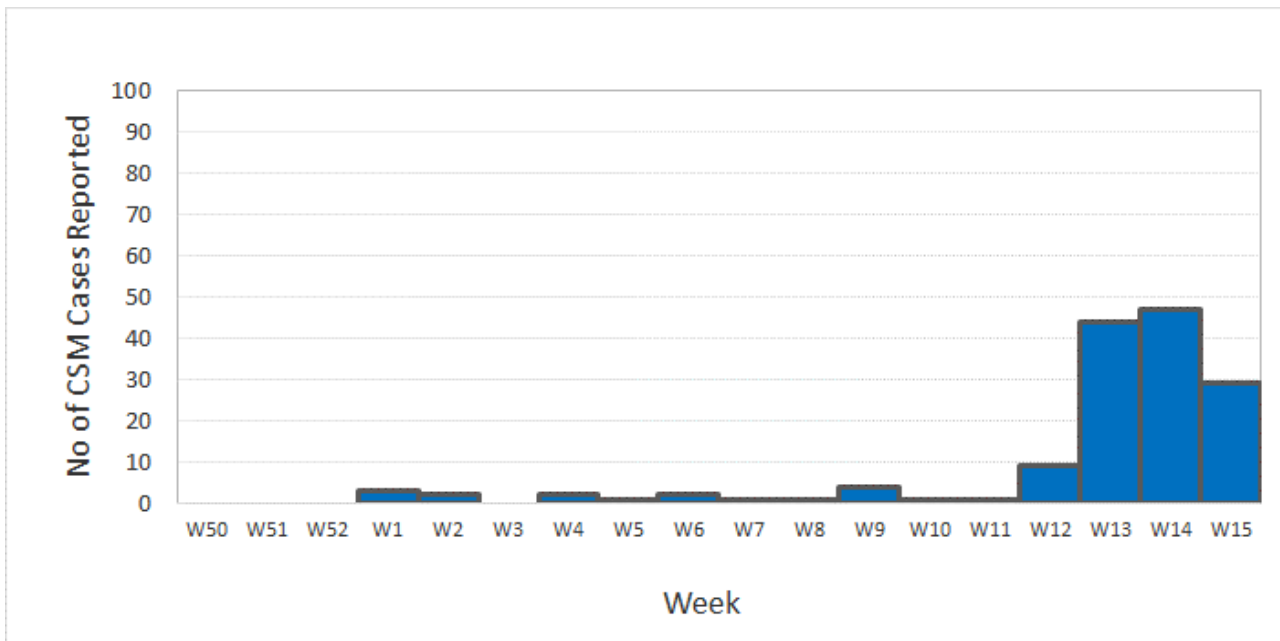
**Figure 6: Reported Cerebrospinal Meningitis Cases—Katsina State, Nigeria (as at April 12, 2017)**



**Figure 7: Reported Cerebrospinal Meningitis Cases—Kebbi State, Nigeria (as at April 16, 2017)**



**Figure 8: Reported Cerebrospinal Meningitis Cases— Niger State, Nigeria (as at April 16, 2017)**



**Figure 9: Reported Cerebrospinal Meningitis Cases—Yobe State, Nigeria (as at April 12, 2017)**  
*(only cases of NmA have been confirmed in Yobe)*

**Table 1: Reported cerebrospinal meningitis cases by state as at April 12, 2017**

	State	LGAs reporting cases (n)	LGAs in alert status (n)	LGAs in epidemic status (n)	Total cases reported (n)	Total Lab confirmed (n)	MenC serotype (n)	Deaths (n)	Case fatality rate (%)
1	Zamfara	14	2	12	4922	81	66	457	9.3%
2	Sokoto	23	6	9	2116	33	28	124	5.9%
3	Katsina	18	3	0	256	36	33	54	21.1%
4	Kebbi	16	1	0	108	23	21	15	13.9%
5	Niger	10	2	1	117	7	9	34	29.1%
6	Yobe	12	1	1	158	17	0	20	12.7%
7	Kano	26	0	0	145	15	0	10	6.9%
8	FCT	5	0	0	32	0	0	12	37.5%
9	Nasaraw	5	0	0	12	0	0	0	0.0%
10	Gombe	2	0	0	2	1	0	1	50.0%
11	Taraba	1	0	0	4	0	0	0	0.0%
12	C/River	3	0	0	28	0	0	3	10.7%
13	Osun	1	0	0	1	0	0	0	0.0%
15	Lagos	1	0	0	3	0	0	2	66.7%
16	Jigawa	13	0	0	21	4	0	3	14.3%
17	Plateau	4	0	0	59	4	0	6	10.2%
18	Kogi	1	0	0	2	1	0	0	0.0%
19	Oyo	7	0	0	14	0	0	0	0.0%
20	Delta	2	0	0	2	1	0	0	0.0%
21	Adamaw	4	0	0	4	4	0	0	0.0%
22	Benue	1	0	0	1	0	0	0	0.0%
23	Kaduna	12	0	0	50	3	0	4	8.0%
<b>Tota</b>		<b>181</b>	<b>15</b>	<b>23</b>	<b>8057</b>	<b>230</b>	<b>157</b>	<b>745</b>	<b>9.2%</b>

\*\*\*\* Highlighted in red are states with at least one LGA that has passed outbreak threshold