



# Lassa Fever Situation Report

Epi Week 13: 23<sup>rd</sup> – 29<sup>th</sup> March 2026

## Key Points

**Table 1: Summary of the current week (13), cumulative Epi week 1-13, 2026 and comparison with the previous year (2025)**

Reporting Period	Suspected cases	Confirmed cases	Probable cases	Deaths (Confirmed cases)	Case Fatality Rate (CFR)	States and LGAs affected (Confirmed cases)
<b>Current week</b> (week 13)	267	26	0	5	19.2%	State(s):7 LGA(s):15
<b>2026 Cumulative</b> (week 13)	3831	663	5	167	25.2%	State(s):22 LGA(s): 93
<b>2025 Cumulative</b> (week 13)	3779	659	7	122	18.5%	State(s):18 LGA(s): 93

## Highlights

- In week 13, the number of new confirmed cases decreased from 51 in Epi week 12 to 26. These were reported in Edo, Bauchi, Ondo, Taraba, Ebonyi, Benue and Kaduna States (Table 3).
- Cumulatively, 167 deaths have been reported with a Case Fatality Rate (CFR) of 25.2% which is higher than the CFR for the same period in 2025 (18.5%).
- In total for 2026, 22 States have recorded at least one confirmed case across 93 Local Government Areas (Figures 2 and 3).
- Eighty-five (85%) of all confirmed Lassa fever cases were reported from 5 states (Bauchi, Ondo, Taraba, Edo and Benue) while (15%) sixteen were reported from 17 states with confirmed Lassa fever cases. Of the 85% confirmed cases, Bauchi reported 28%, Ondo 22%, Taraba 18%, Edo 9% and Benue 8%.
- The predominant age group affected is 21-30 years (Range: 1 to 90 years, Median Age: 30 years). The male-to-female ratio for confirmed cases is 1:0.8 (Figure 4).
- The number of suspected and confirmed cases increased compared to that reported for the same period in 2025.
- No new healthcare workers were affected in the reporting week 13.
- National Lassa fever multi-partner, multi-sectoral Incident Management System (IMS) activated to support the coordination of response activities at all levels.

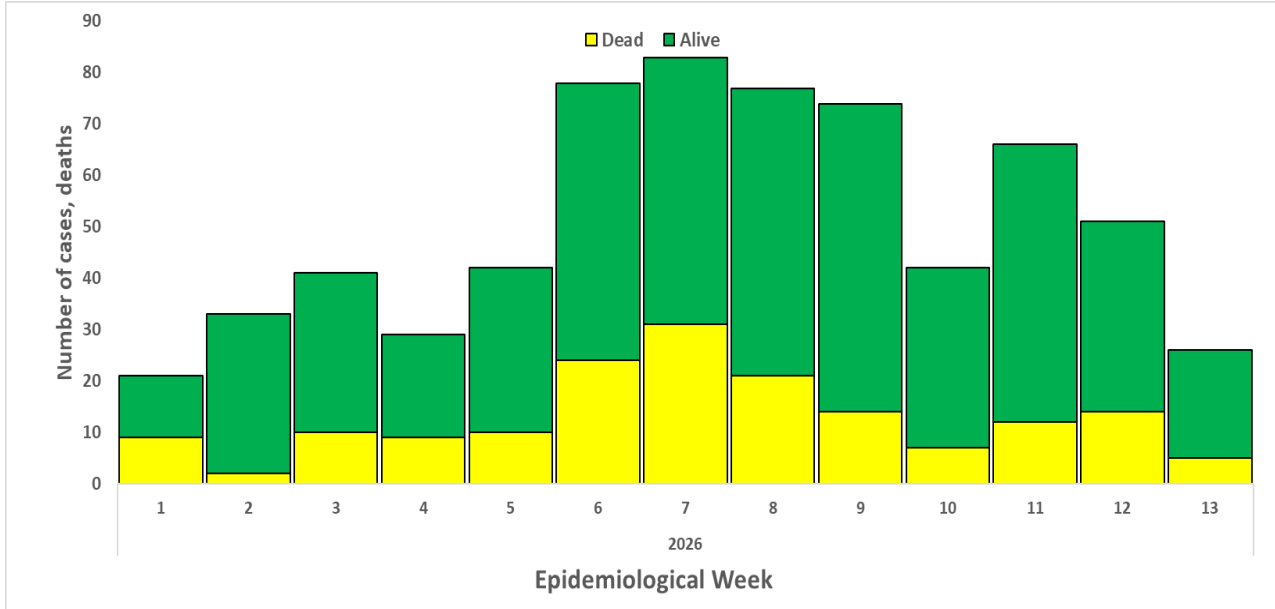


Figure 1. Confirmed Lassa Fever Cases in Nigeria Epidemiological Week 13, 2026

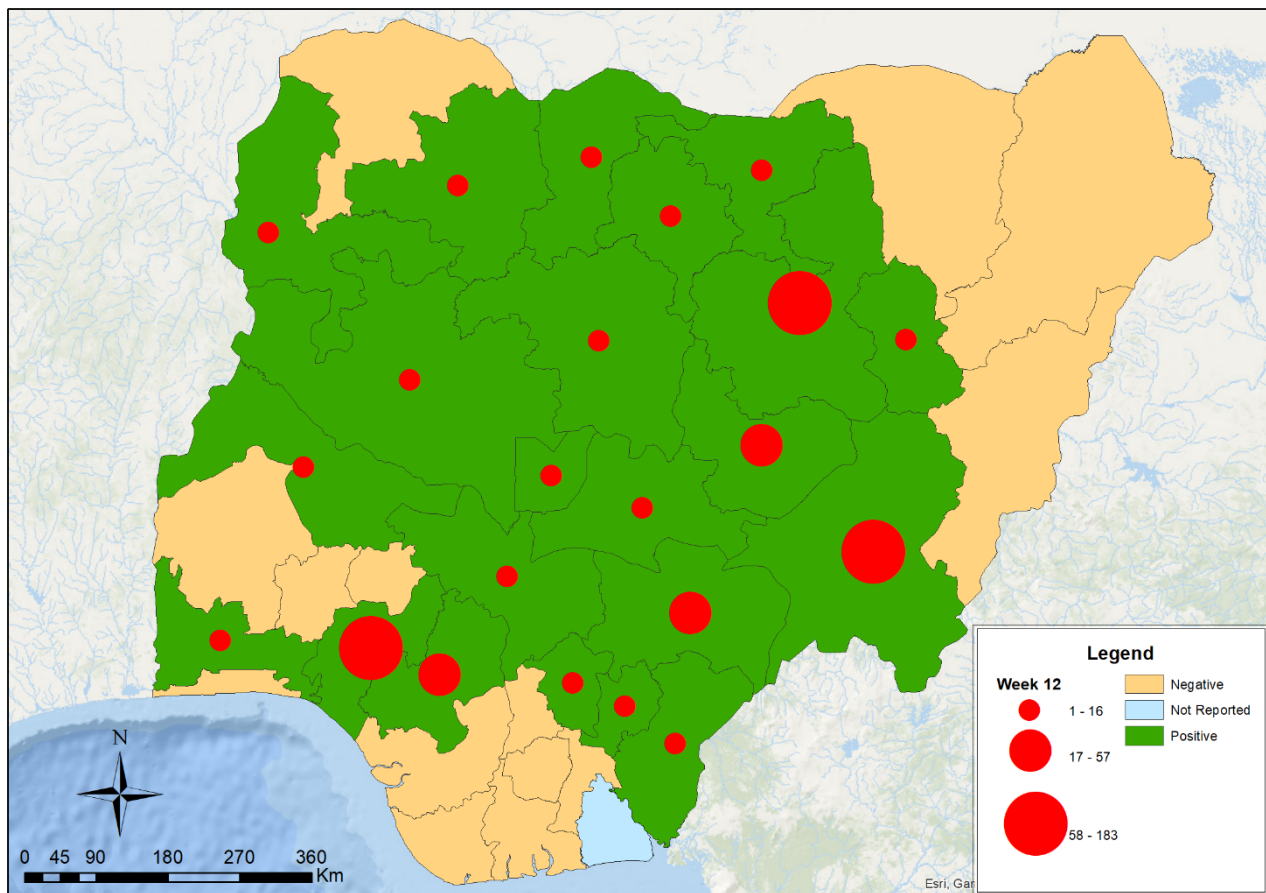


Figure 2. Confirmed Lassa fever cases by States in Nigeria, week 13, 2026

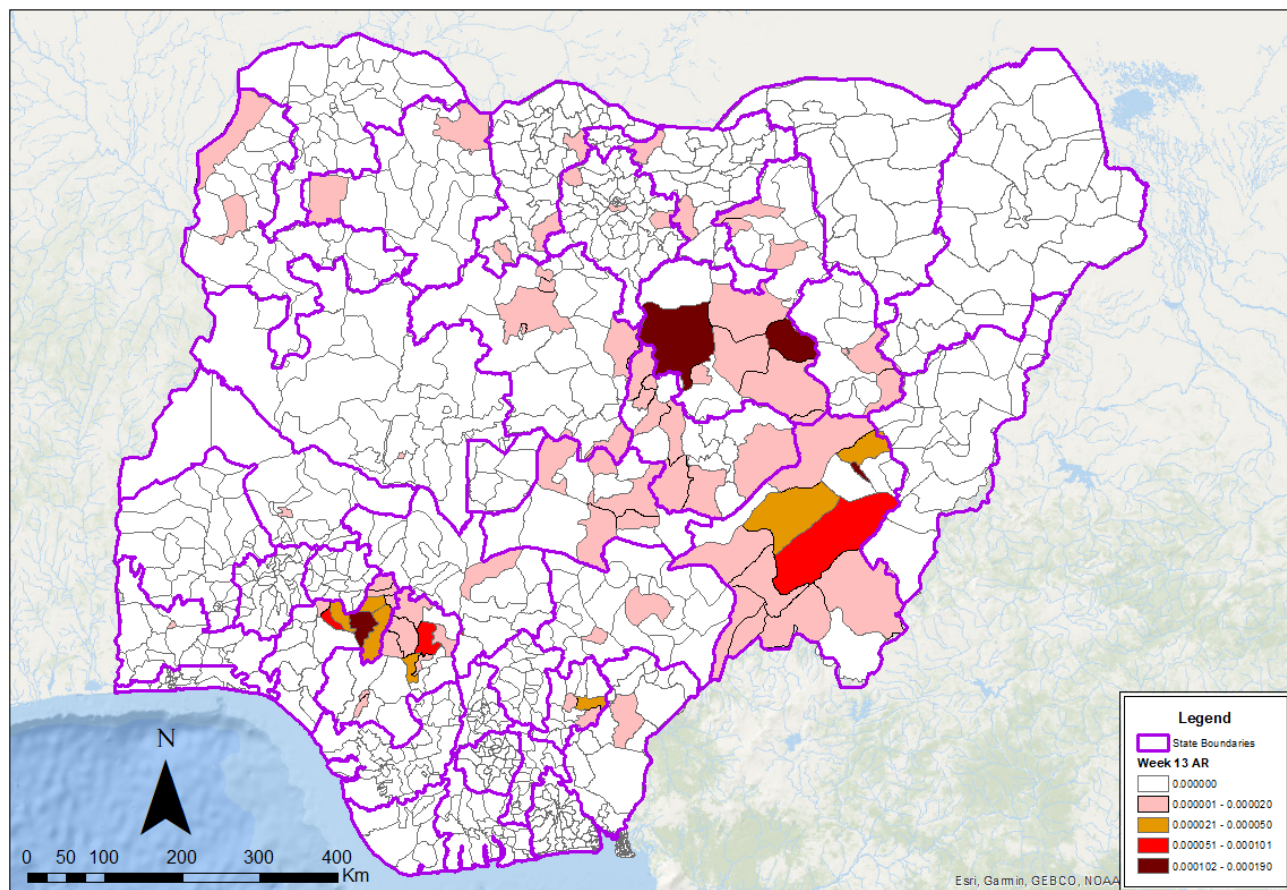


Figure 3. Confirmed Lassa fever attack rate per 100,000 population for LGAs in Nigeria, week 13, 2026

Table 2: Key indicators for the current week in 2026 and trend compared to the previous week, Nigeria

Symptomatic contacts	Number for current week	Trend from previous week	Cumulative number for 2026
Probable cases	0	↔	5
Health Care Worker affected	0	↓	39
Cases managed at the treatment centres	21	↓	496
<b>Contact tracing</b>			
Cumulative contact listed	42	↓	1224
Contacts under follow up	501	↑	501
Contacts completed follow up	7	↓	720
Symptomatic contacts	0	↓	96
Positive contacts	0	↓	49
Contacts lost to follow up	0	↔	3

Key

- ↑ Increase
- ↓ Decrease
- ↔ No difference

Table 3. Weekly and Cumulative number of suspected and confirmed cases for 2026

States	Current week: (Week 13 )					Cumulative (Week 1 - 13 )				
	Cases				Deaths (Confirmed Cases)	Cases				Deaths (Confirmed Cases)
	Suspected	Confirmed	Trend	Probable		HCW*	Suspected	Confirmed	Probable	
1 Bauchi	60	6	▼			734	183		5	29
2 Ondo	58	5	▼		4	786	144		4	37
3 Taraba	17	3				278	120		3	41
4 Edo	67	9	▲			649	57			10
5 Benue	8	1	▼			299	51	2	14	12
6 Plateau			▼			131	31	3	2	11
7 Ebonyi	16	1	▼		1	170	16		2	8
8 Nasarawa	4					241	15		6	3
9 Kaduna	1	1	▲			65	8			2
10 Kogi	2		▼			27	7			5
11 Gombe	2		▼			43	7			4
12 Kano						89	7		3	1
13 Katsina			▼			15	3			1
14 Fct	3		▼			28	3			
15 Kebbi						8	2			1
16 Zamfara						15	2			
17 Jigawa	1					41	2			2
18 Niger						5	1			
19 Kwara						7	1			
20 Cross River						22	1			
21 Ogun						12	1			
22 Enugu	22		▼			42	1			
23 Osun						1				
24 Ekiti	1					13				
25 Imo						3				
26 Sokoto						1				
27 Yobe						8				
28 Delta						15				
29 Rivers						4				
30 Anambra						8				
31 Bayelsa						5				
32 Abia	1					7				
33 Borno						11				
34 Lagos	4					37				
35 Adamawa						4				
36 Oyo						7				
<b>Total</b>	<b>267</b>	<b>26</b>	<b>▼</b>		<b>5</b>	<b>3831</b>	<b>663</b>	<b>5</b>	<b>39</b>	<b>167</b>

Key	
▼	Decrease
▲	Increase

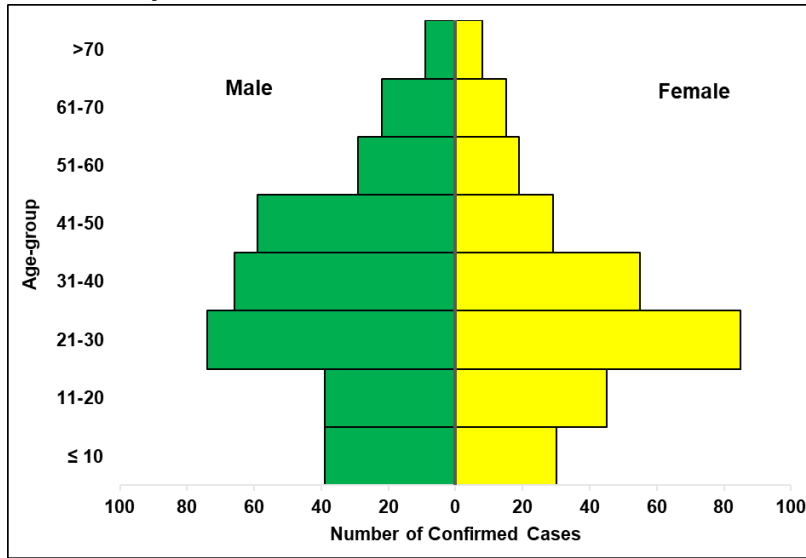


Figure 4. Age and sex pyramid showing the number of confirmed Lassa fever cases for 2026

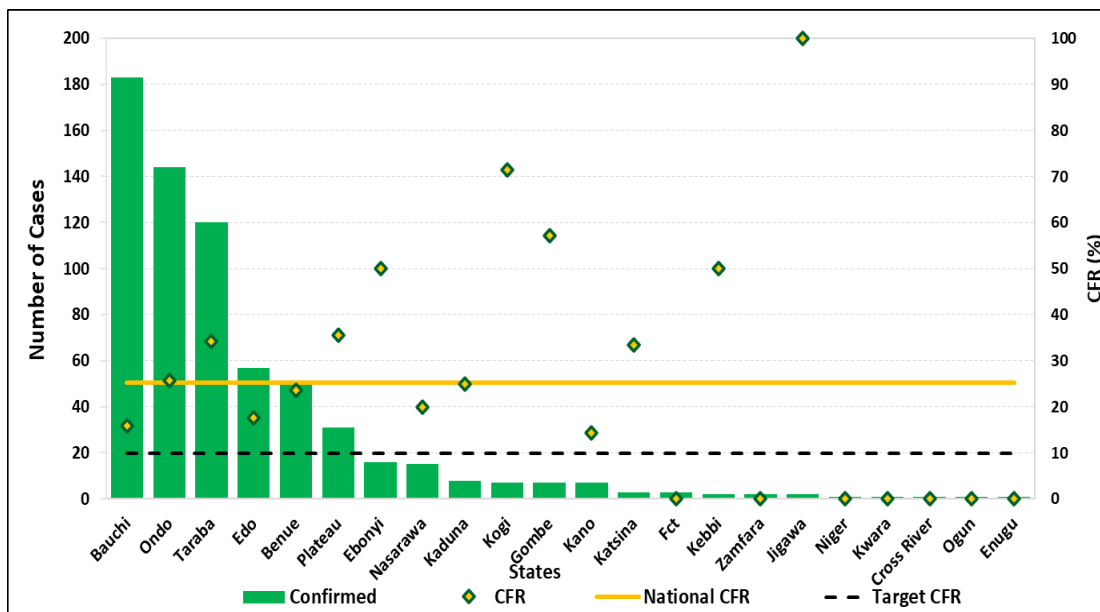


Figure 5: Number of confirmed cases with Case Fatality Rate (CFR) by state week 13, 2026

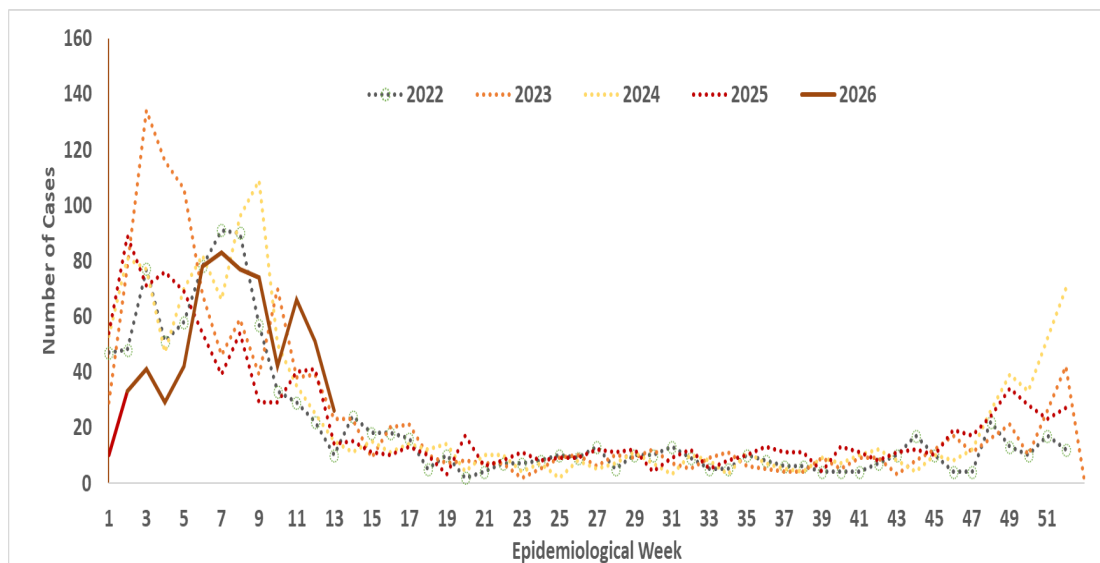


Figure 6: Trend of confirmed cases by epidemiological week, 2022– 2026, Nigeria

**Response activities**

- Developed a 30-day Healthcare Worker Protection Plan for Lassa fever to curb infections among frontline healthcare workers in endemic states with the support of WHO, and US CDC
- Led a high-level advocacy to Benue State with the support of WHO, UNICEF and MSF
- Released a joint advisory for Medical Doctors and healthcare workers to bolster ongoing efforts for Lassa fever control and management
- Held a meeting with the Nigerian Medical Association (NMA) to strengthen collaborative efforts
- Piloted a targeted IPC Ring Strategy intervention in Benue State with the support of WHO
- Supporting high burden states with active case search and contact tracing in collaboration with the Research Triangle Institute (RTI) International through US CDC funding
- Held a National press briefing for Lassa fever
- Supported the integrated case management training in Taraba state with the support of WHO
- Disseminated of updated IPC guidelines, SOPs as reminders for HCWs adherence
- Prepositioned PPE and distributed to health facilities
- Activation of Incident Management System for Lassa fever in Kebbi, Kano, Gombe states
- Held the inaugural Joint Clinical Fellows Meeting (LFCMF Cohorts I & II) with the support of Georgetown University and US CDC.
- Administered the RCCE need assessment questionnaire across the National Rapid Response Teams (NRRT) deployed states
- Deployment of NRRT across 7 high burden states for the outbreak with the support of the BHCPF
- Held a pre-deployment briefing to ensure teams were adequately prepared for outbreak containment in the field
- Conducted a high-level field mission to Bauchi State with the support of Médecins Sans Frontières (MSF)
- Pilot implementation of the Turn a State Orange (TASO) Programme in Enugu, Oyo, and the FCT in collaboration with DRASA
- Collaborated with Logistic pillar to facilitate the distribution and pre-positioning of PPE at facilities with active and previous healthcare worker infections
- Technical support from US CDC and Pro-Health International to investigate and mitigate healthcare worker infections
- Activated the Incident Management System of the National Lassa fever EOC
- Identifying challenges and providing solutions to all states sending situation reports
- Implementing the approved outputs of the dynamic risk assessment
- Treatment of confirmed cases at identified treatment centres across the states
- Continuous engagement with Treatment Centres (TCs)
- The APIN Orange Network is strengthening the capacity of health facilities in conducting Hand Hygiene Audits and implementing hand hygiene improvement programmes
- Analysed samples across the Laboratory network for Lassa fever to guide prompt diagnosis and treatment
- Forecasted and quantified Medical Countermeasures (MCMs) for Lassa fever
- Distributed response commodities -PPEs, Ribavirin (injection and tablets) body-bags, thermometers, hypochlorite hand sanitizers, and IEC materials distributed to states and treatment centres
- Supporting the implementation of the Community-based One Health Participatory and Empowerment (COPE) Phase II collaboration with RKI
- Identified gaps for research on Lassa fever
- Shared soft copies of Lassa Fever (LF) Social Behavioural Change (SBC) materials with State Health Promotion Officers (SHPOs) and other RCCE stakeholders
- Implementing outputs of the LF behavioural assessment across the 10 high burden states with the support of UNICEF
- Continued collaboration post-lecture on LF in the 2025 Nigerian Medical Students' Association (NiMSA) conference
- Review and testing of the LF disease specific form on SORMAS
- Activation of Incident Management System (IMS) in Benue State and Plateau State
- Supply of Lassa fever IPC commodities & drugs to BSUTH treatment & isolation centre with support from WHO
- Engaged with all stakeholders across the national and subnational Ministries of environment to prevent and control Lassa fever outbreaks
- Advocated for a budget line to support field activities for Lassa fever prevention and control

## Challenges

- Late presentation of cases leading to an increase in CFR
- Poor health-seeking behaviour due to the high cost of treatment and clinical management of Lassa fever
- Poor environmental sanitation conditions observed in high-burden communities
- Poor awareness observed in high-burden communities
- Healthcare workers infection

## Recommendations

- **States-** Bolster efforts all-year-round for community engagements on prevention of Lassa fever
- **Healthcare Workers-** Maintain high suspicion for Lassa fever and initiate timely referral and treatment, and adhere to standard infection prevention and control procedures.
- **NCDC/Partners-** Strengthen state capacity to prevent, detect and respond timely to Lassa fever

## Notes on this report

### Data Source

Information for this disease was case-based data retrieved from the National Lassa Fever Technical Working Group.

### Case definitions

- **Suspected case:** any individual presenting with one or more of the following: malaise, fever, headache, sore throat, cough, nausea, vomiting, diarrhoea, myalgia, chest pain, hearing loss and either a. History of contact with excreta or urine of rodents b. History of contact with a probable or confirmed Lassa fever case within a period of 21 days of onset of symptoms OR Any person with inexplicable bleeding/haemorrhage.
- **Confirmed case:** any suspected case with laboratory confirmation (positive IgM antibody, PCR or virus isolation)
- **Probable case:** any suspected case (see definition above) who died or absconded without collection of specimen for laboratory testing
- **Contact:** Anyone who has been exposed to an infected person, or to an infected person's secretions, excretions, or tissues within three weeks of last contact with a confirmed or probable case of Lassa fever

### Calculations

- Case Fatality Rate (CFR) for this disease is reported for confirmed cases only.

### VIRAL HAEMORRHAGIC FEVER QUICK REFERENCE GUIDE

For social mobilization [https://ncdc.gov.ng/themes/common/docs/vhfs/83\\_1517222929.pdf](https://ncdc.gov.ng/themes/common/docs/vhfs/83_1517222929.pdf)

For LGA Rapid Response Team [https://ncdc.gov.ng/themes/common/docs/vhfs/82\\_1517222811.pdf](https://ncdc.gov.ng/themes/common/docs/vhfs/82_1517222811.pdf)

Healthcare worker laboratory [https://ncdc.gov.ng/themes/common/docs/vhfs/81\\_1517222763.pdf](https://ncdc.gov.ng/themes/common/docs/vhfs/81_1517222763.pdf)

For healthcare workers [https://ncdc.gov.ng/themes/common/docs/vhfs/80\\_1517222586.pdf](https://ncdc.gov.ng/themes/common/docs/vhfs/80_1517222586.pdf)

For community informants [https://ncdc.gov.ng/themes/common/docs/vhfs/79\\_1517222512.pdf](https://ncdc.gov.ng/themes/common/docs/vhfs/79_1517222512.pdf)

### NATIONAL GUIDELINES FOR LASSA FEVER CASE MANAGEMENT

[https://ncdc.gov.ng/themes/common/docs/protocols/92\\_1547068532.pdf](https://ncdc.gov.ng/themes/common/docs/protocols/92_1547068532.pdf)

### VIRAL HAEMORRHAGIC FEVER AND RESPONSE PLAN

[https://ncdc.gov.ng/themes/common/docs/protocols/24\\_1502192155.pdf](https://ncdc.gov.ng/themes/common/docs/protocols/24_1502192155.pdf)

### NATIONAL GUIDELINE FOR INFECTION, PREVENTION AND CONTROL FOR VIRAL HAEMORRHAGIC FEVER INFORMATION RESOURCE

[https://ncdc.gov.ng/themes/common/docs/protocols/341\\_1707300274.pdf](https://ncdc.gov.ng/themes/common/docs/protocols/341_1707300274.pdf)

### ADVOCACY TOOLKIT

[https://ncdc.gov.ng/themes/common/docs/protocols/359\\_1739532942.pdf](https://ncdc.gov.ng/themes/common/docs/protocols/359_1739532942.pdf)

Nigeria Centre for Disease Control and Prevention: [www.ncdc.gov.ng](http://www.ncdc.gov.ng)

*Disclaimer – This situation report is based on the best available information reported. The NCDC is not responsible for information shared with third parties or any interpretation outside what is published. The report may not be used, published, or redistributed to the public. All redacted Lassa fever situation reports are available at <http://ncdc.gov.ng/diseases/sitreps>*