

YELLOW FEVER SITUATION REPORT

Serial Number: 005	May 2025 Monthly Sitrep
Epi Week:	20 - 24 as at 31 st May 2025
Reporting Month:	May 2025

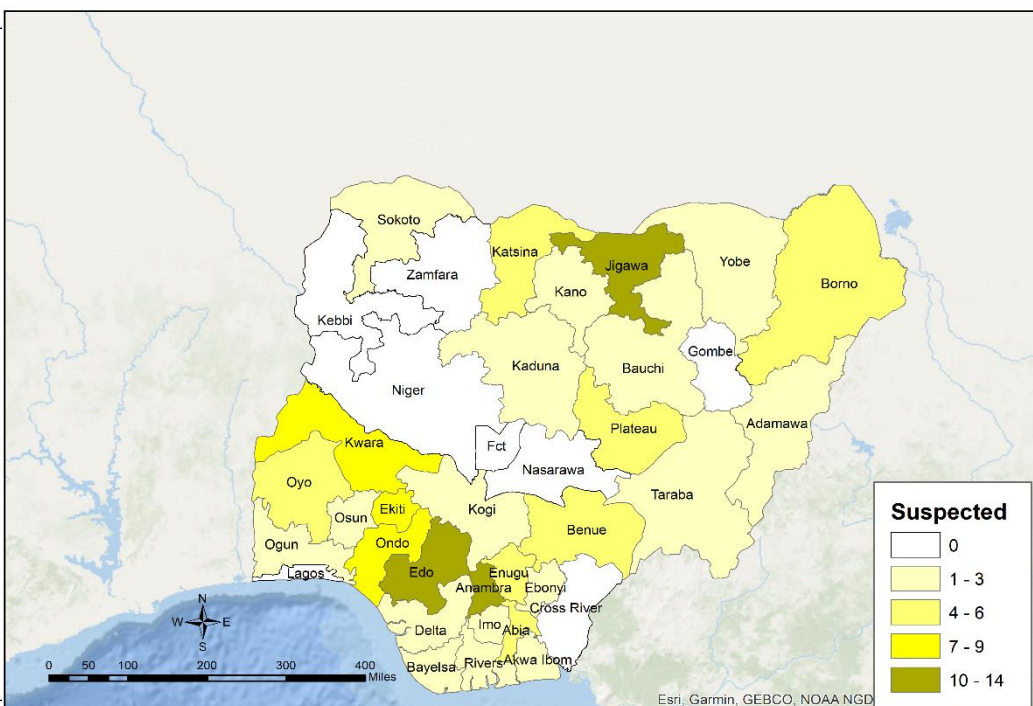


REPORTING MONTH: MAY 2025

HIGHLIGHTS

REPORTING PERIOD: 1ST MAY 2025 – 31ST MAY 2025

- The Nigeria Centre for Disease Control & Prevention (NCDC) continues to monitor reports of yellow fever cases in Nigeria.
- A total of 122 suspected cases were reported from 94 Local Government Areas (LGAs) across 29 states. The states include Abia (5), Adamawa (2), Akwa Ibom (3), Anambra (14), Bauchi (2), Bayelsa (2), Benue (4), Borno (4), Delta (1), Ebonyi (1), Edo (11), Ekiti (7), Enugu (4), Imo (2), Jigawa (12), Kaduna (1), Kano (1), Katsina (6), Kogi (1), Kwara (8), Ogun (2), Ondo (9), Osun (1), Oyo (4), Plateau (6), Rivers (3), Sokoto (2), Taraba (2), and Yobe (2).
- No presumptive positive and inconclusive case was reported
- **No confirmed** case was recorded within the reporting month.
- **No death** was recorded from both suspected and confirmed cases in the reporting month.



122
SUSPECTED
CASES

29
STATES WITH
SUSPECTED
CASES

0
CONFIRMED
CASES

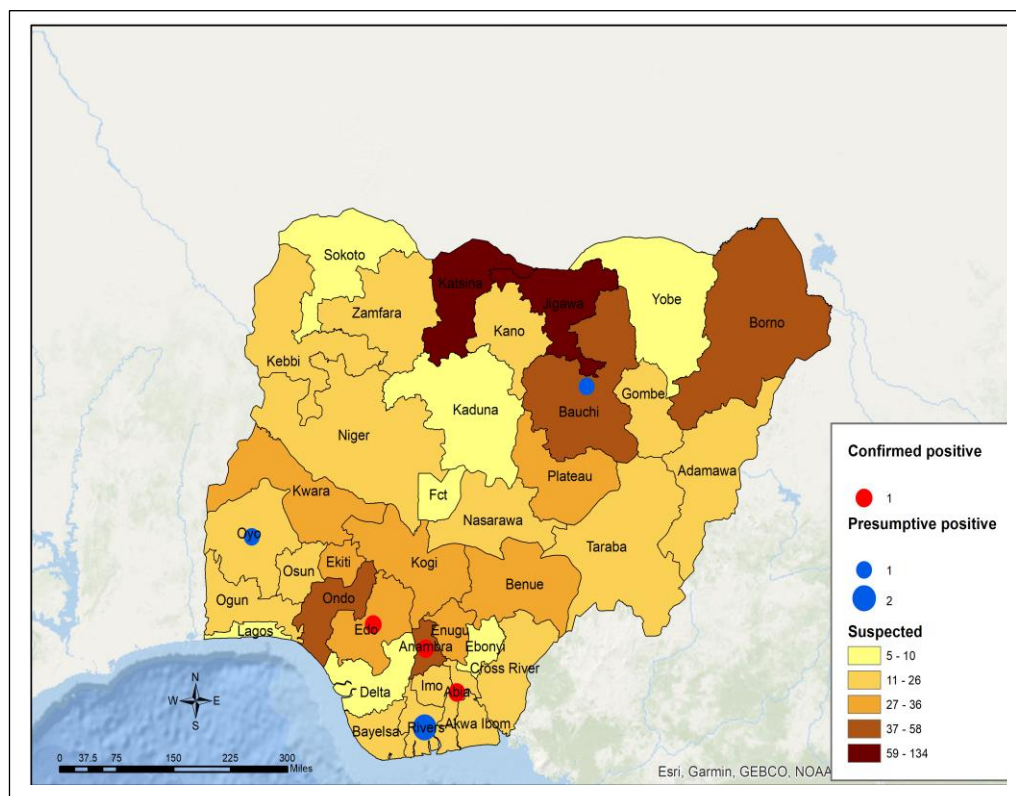
0
STATE WITH
CONFIRMED
CASES

0
STATES WITH
DEATHS IN
CONFIRMED
CASES

0
DEATHS IN
CONFIRMED
CASES

CUMULATIVE FOR 1ST JANUARY 2025 – 31ST MAY 2025

- Cumulatively from 1st January 2025 – 31st May 2025
- A total of 1,022 suspected cases have been reported from 413 LGAs in 36 states including the FCT.
- The cases were reported from the following states: Abia (24), Adamawa (24), Akwa Ibom (25), Anambra (51), Bauchi (44), Bayelsa (11), Benue (36), Borno (42), Cross River (15), Delta (8), Ebonyi (5), Edo (30), Ekiti (28), Enugu (32), FCT, Abuja (6), Gombe (13), Imo (20), Jigawa (134), Kaduna (8), Kano (12), Katsina (107), Kebbi (22), Kogi (27), Kwara (33), Lagos (5), Nasarawa (16), Niger (26), Ogun (21), Ondo (58), Osun (11), Oyo (24), Plateau (36), Rivers (19), Sokoto (9), Taraba (22), Yobe (6) and Zamfara (12).
- **Three (3)** presumptive positive and **one (1)** inconclusive result were recorded from the Nigeria Laboratory networks.
- These presumptive positives were from UBTH Benin (2) and GSSH Gombe (1) while the **inconclusive** case was from the YDMH Kaduna (1). This case was from Jigawa (1). These samples have been shipped to IP Dakar for confirmation.
- **Three (3)** confirmed cases were recorded within the reporting month From Abia (1) [Isiala-Ngwa South (1)], Anambra (1) [Aguata (1)] and Edo (1) [Oredo (1)] respectively.
- **No death** has been recorded from suspected or confirmed cases [**CFR = 0%**]
- Male to female ratio for suspected cases was **1.1:1** with males 544 (53.2%) and females 478 (46.7%)
- Seven hundred and ninety-six (77.9%) suspected cases were predominantly aged 30 years and below.
- Fifty-nine (6.6%) of 1022 suspected cases received at least one dose of the yellow fever vaccine.
- The NCDC coordinates response activities through the National Multi-agency Yellow Fever Technical Working Group (YF TWG).



1022 SUSPECTED CASES	36 + FCT STATES WITH SUSPECTED CASES
3 CONFIRMED CASES	3 STATES WITH CONFIRMED CASES
0 DEATHS IN CONFIRMED CASES	0 STATES WITH DEATHS IN CONFIRMED CASES

Table 1: Summary of yellow fever cases in Nigeria from 1st January – 31st May 2025

State	# Suspected Cases	# LGAs with suspected cases	# LGAs with confirmed cases	Laboratory Results					Deaths	
				Samples positive (IgM) & Inconclusive in NG	LGAs with positive (IgM) & Inconclusive in NG	Confirmed Cases (PCR)	Confirmed Cases (IP Dakar)	Total Confirmed Cases	# Deaths among Confirmed Cases [CFR] (%)	# Deaths among All Cases [CFR](%)
Abia	24	11	1	-	-	-	1	1	-	-
Adamawa	24	12	-	-	-	-	-	-	-	-
Akwa Ibom	25	17	-	-	-	-	-	-	-	-
Anambra	51	19	1	-	-	-	1	1	-	-
Bauchi	44	15		1	1	-	-	-	-	-
Bayelsa	11	5	-	-	-	-	-	-	-	-
Benue	36	12	-	-	-	-	-	-	-	-
Borno	42	18	-	-	-	-	-	-	-	-
Cross River	15	9	-	-	-	-	-	-	-	-
Delta	8	8	-	-	-	-	-	-	-	-
Ebonyi	5	5	-	-	-	-	-	-	-	-
Edo	30	14	1	-	-	-	1	1	-	-
Ekiti	28	13	-	-	-	-	-	-	-	-
Enugu	32	14	-	-	-	-	-	-	-	-
FCT Abuja	6	3	-	-	-	-	-	-	-	-
Gombe	13	7	-	-	-	-	-	-	-	-
Imo	20	14	-	-	-	-	-	-	-	-
Jigawa	134	24	-	1	1	-	-	-	-	-
Kaduna	8	6	-	-	-	-	-	-	-	-
Kano	12	7	-	-	-	-	-	-	-	-
Katsina	107	29	-	-	-	-	-	-	-	-
Kebbi	22	11	-	-	-	-	-	-	-	-
Kogi	27	12	-	-	-	-	-	-	-	-
Kwara	33	13	-	-	-	-	-	-	-	-
Lagos	5	5	-	-	-	-	-	-	-	-
Nasarawa	16	8	-	-	-	-	-	-	-	-
Niger	26	9	-	-	-	-	-	-	-	-
Ogun	21	11	-	-	-	-	-	-	-	-
Ondo	58	12	-	-	-	-	-	-	-	-
Osun	11	9	-	-	-	-	-	-	-	-
Oyo	24	15	-	1	1	-	-	-	-	-
Plateau	36	11	-	-	-	-	-	-	-	-
Rivers	19	10	-	2	2	-	-	-	-	-
Sokoto	9	3	-	-	-	-	-	-	-	-
Taraba	22	11	-	-	-	-	-	-	-	-
Yobe	6	4	-	-	-	-	-	-	-	-
Zamfara	12	6	-	-	-	-	-	-	-	-
TOTAL	1022	412 (53.2%)	3 (0.4%)	5 (0.5%)	5 (0.6%)	0 (0.0%)	3 (0.3%)	3 (0.3%)	0(0.0%)	0 (0.0%)

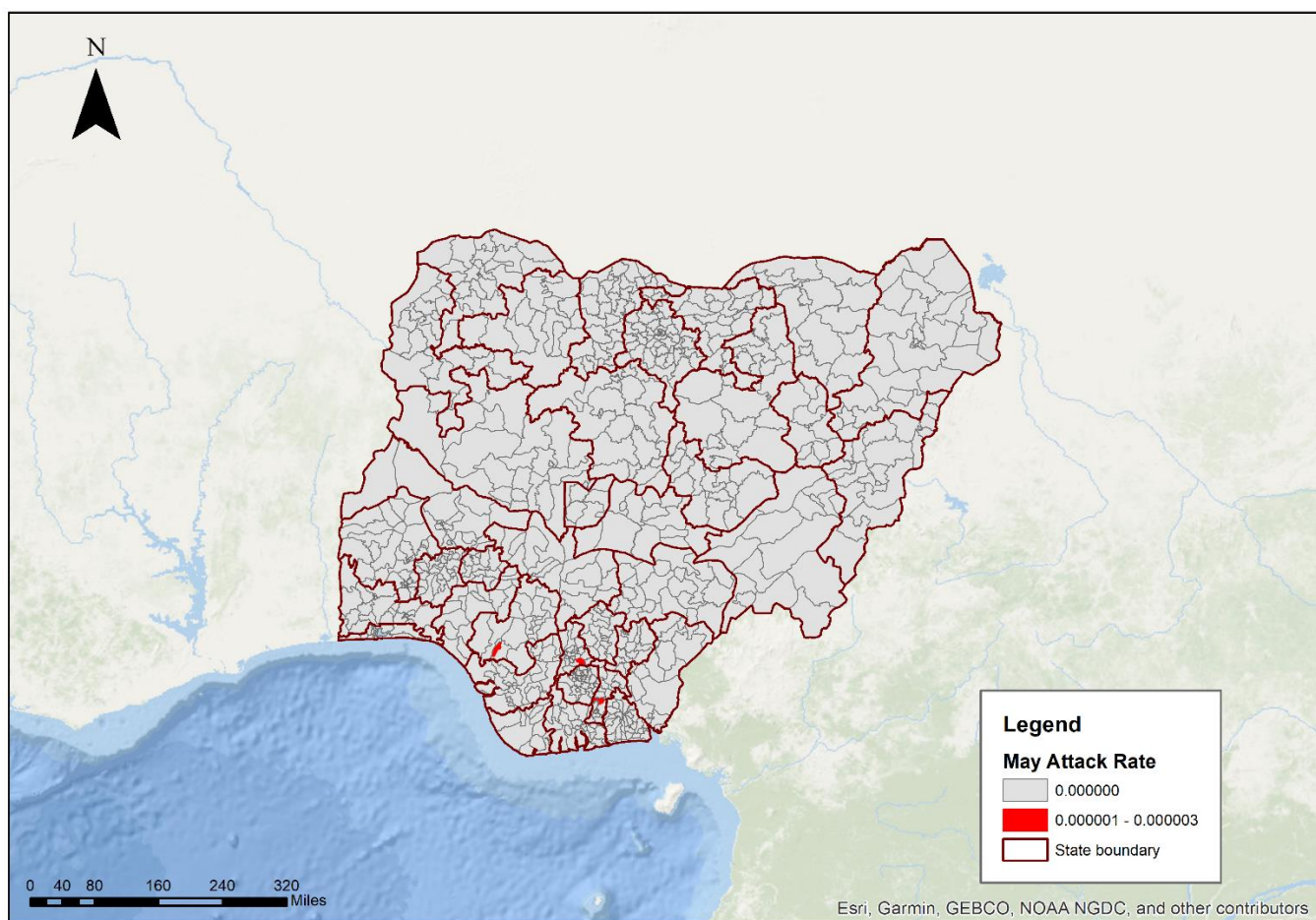


Figure 1: Map of Nigeria showing yellow fever outbreak attack rates in affected LGAs for May 2025

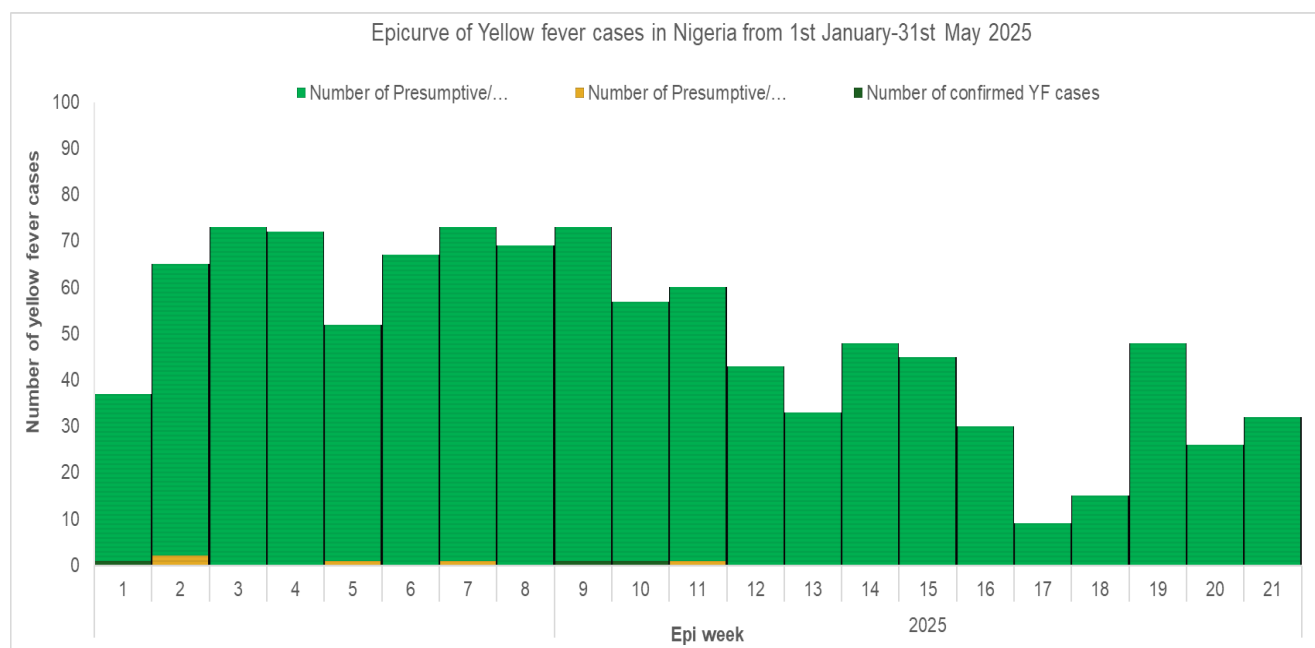


Figure 2: Epicurve of yellow fever cases in Nigeria from 1st January – 31st May 2025

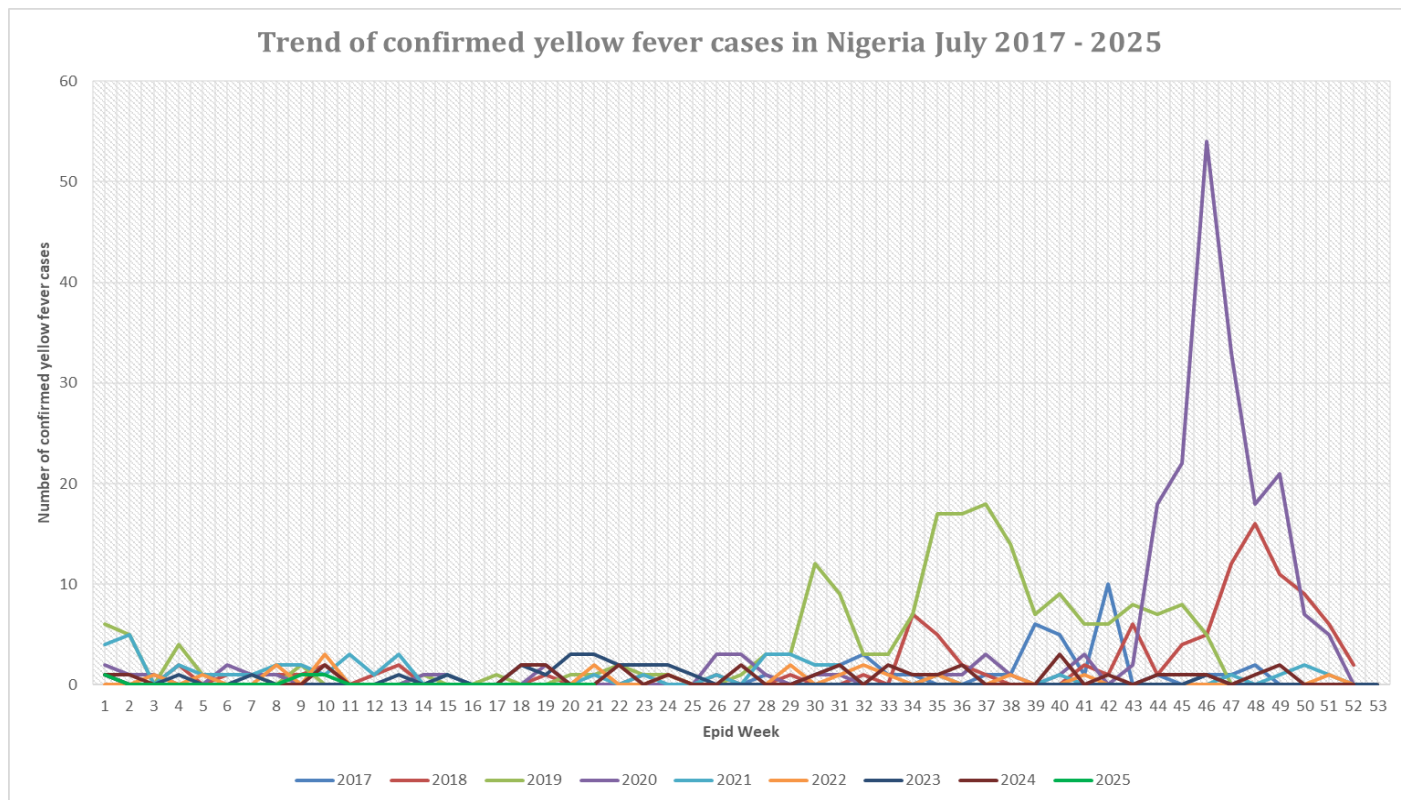


Figure 3: Trend of confirmed yellow fever cases in Nigeria from 2017 – May 2025

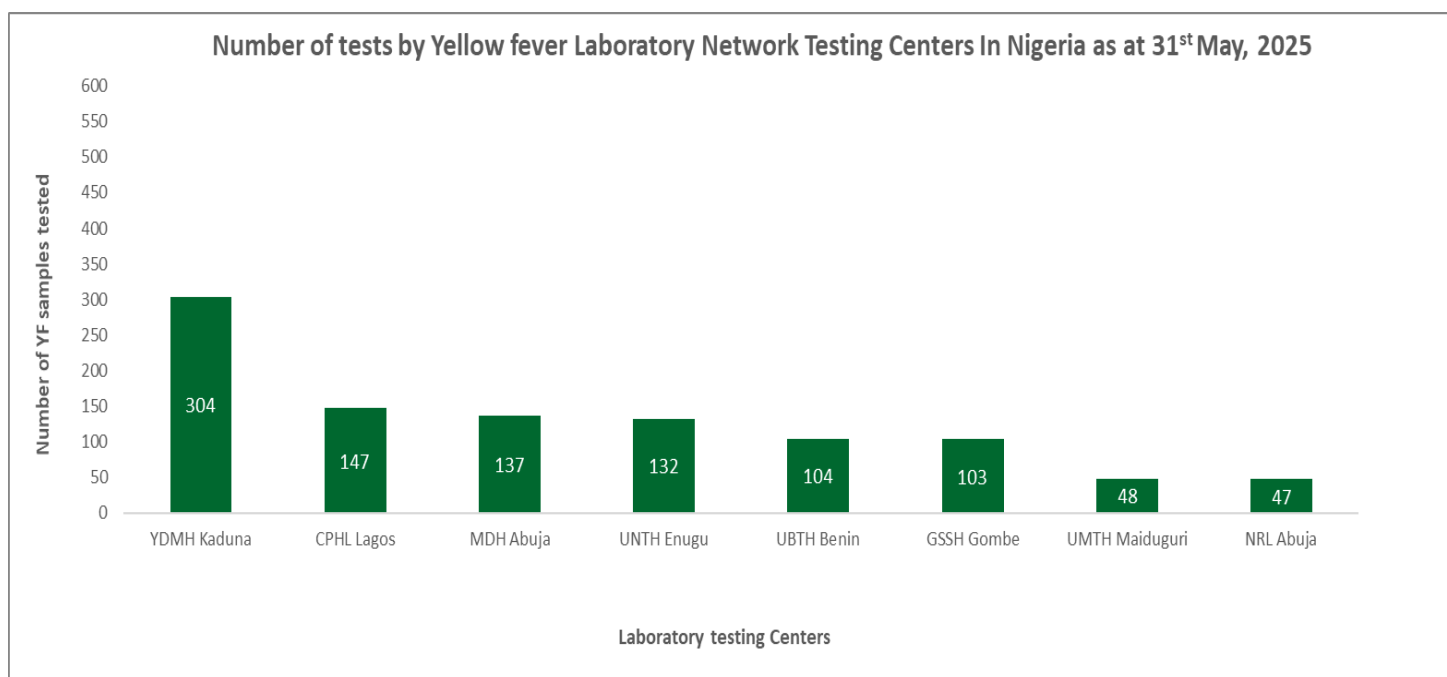


Figure 4: Distribution of yellow fever tested samples by Laboratory network testing centers in Nigeria from 1st January – 31st May 2025.

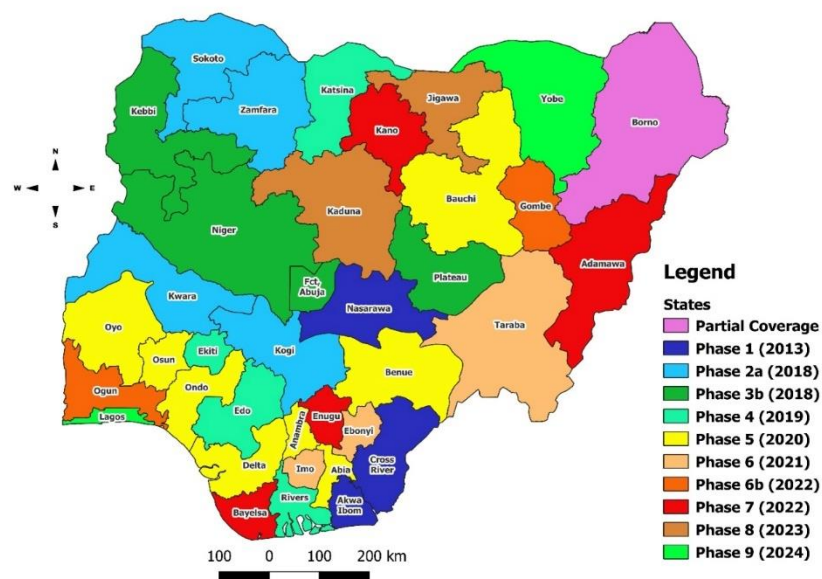


Figure 5: Map of Nigeria showing states and years of implementation of yellow fever preventive mass vaccination campaigns (PMVC) from 2013 – 2025

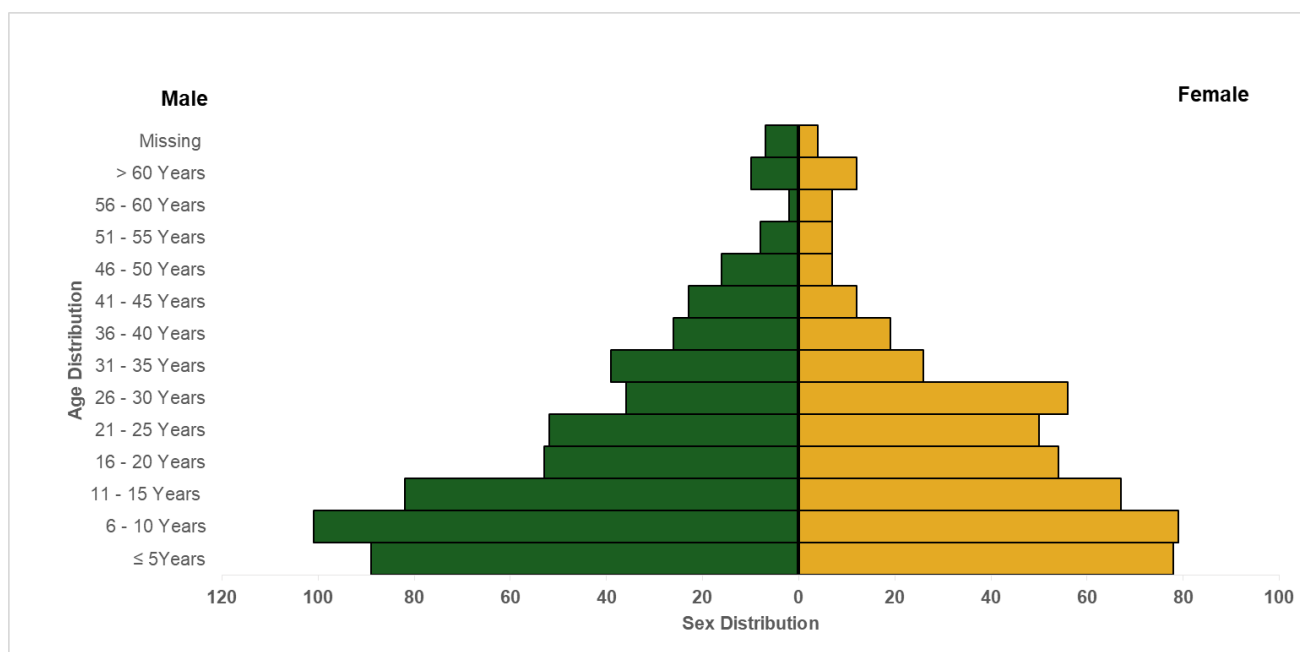


Figure 6: Age and sex distribution of yellow fever cases in Nigeria from 1st January – 31st May 2025

SUMMARY OF TWG ACTIVITIES

Coordination

- Yellow fever response activities are coordinated by the NCDC through a multi-agency yellow fever Technical Working Group (YF TWG)
- Off-site support to states with recent confirmed cases from in Abia and Edo states

Epidemiology/Surveillance/Data Management

- Daily monitoring and analysis of surveillance data across the country to guide response activities
- Engagement with State Epidemiologists for regular updates
- Updating cases in the Surveillance Outbreak Response Management and Analysis System (SORMAS) platform

Laboratory

- Coordination of yellow fever sample management and transportation from all states to the regional reference laboratories
- Regular testing of yellow fever samples using the Yellow fever MAC HD testing protocol in reference Laboratories and rt PCR and NRL Gaduwa

Case Management

- Ongoing plan for capacity building for tertiary health care workers on yellow fever case and other IDSR disease identification, management, and reporting

Vaccination - Led by NPHCDA

- Supported implementation of yellow fever Preventive Mass Vaccination Campaign (YF PMVC) phase 8, 2024 in Lagos, Yobe states, and some LGAs in Borno State

Risk Communication

- Review of Information Education and Communication (IEC) jingles in local languages (Hausa, Igbo and Yoruba)
- Ongoing daily media monitoring across social and traditional media platforms

NEXT STEPS

Coordination

- Plan to continue with the capacity building of healthcare workers from selected tertiary hospitals
- Plan to conduct detailed investigation on confirmed cases from Abia, and Anambra and Edo
- Printing and distribution of additional copies of yellow fever preparedness and response guidelines
- Mapping of yellow fever hotspots
- Development of National yellow fever strategic workplan
- Reviewing the report of the DNO project and their recommendations to improve yellow fever response activities
- Planning the yellow fever symposium “New Frontiers in Yellow Fever Control: Strategies for a Yellow Fever-Free Nigeria”.

Epidemiology/Surveillance/Data Management

- Continue monitoring and analysis of YF surveillance data across all states and FCT to guide response
- Work with Surveillance outbreak and response management and analysis system (SORMAS) team to improve data quality

Case Management

- Strengthen the case management capacity at the states to support detection, reporting and response during outbreak

Laboratory

- Supportive supervision to all the yellow fever testing laboratories
- Continue coordination of prompt transportation of samples and availability of reagents in the testing laboratories
- Follow up with IP Dakar for timely release of results
- Establishment of yellow fever biorepository bank to store yellow fever positive samples
- Genomic sequencing of yellow fever positive samples

Vaccination - Led by NPHCDA

- Follow-up for the report and post campaign coverage survey of the YF PMVCs implemented

Risk Communication

- Follow up with the finalization, printing, distribution plan to disseminate YF information, education, and communication materials including jingles across the states and FCT
- Support capacity building on One Health Risk Communication for media
- Sensitization of the media on yellow fever transmission and control measures

Partners



USAID
FROM THE AMERICAN PEOPLE



**Breakthrough
ACTION**
FOR SOCIAL & BEHAVIOR CHANGE

