



# Avian Influenza Situation Report

Epi Week 12: 22 - 28 March 2021

## Key Points

**Table 1: Summary events in States, cumulative from Epi week 12 and comparison with Epi week 11**

Reporting Period	No. of affected States	No. of Farms affected	No. of confirmed Farms	No. of Human contacts	No. of samples collected	No. of samples tested	No. of samples Positive
<b>2021</b> (week 12)	1	5	3	N/A	N/A	N/A	N/A
<b>2021</b> (week 11)	2	2	2	N/A	N/A	N/A	N/A
<b>2021</b> <b>Cumulative</b> (week 1-12)	<b>7</b>	<b>30</b>	<b>23</b>	<b>73</b>	<b>73</b>	<b>64</b>	<b>7</b>

**Key: N/A means not available – investigation is still on-going.**

## Highlights

- Kano and Plateau States have reported confirmed human cases of Avian Influenza (H5 series)
- As of 24<sup>th</sup> March 2021, seven states have reported outbreaks of Highly Pathogenic Avian Influenza (HPAI) cases (H5N1) in poultry. These are Kano, Plateau, Bauchi, Gombe, Nasarawa, Kaduna and Niger (Figure 1).
- One Health National Rapid Response Team (RRT) from NCDC and the Federal Ministry of Agriculture were deployed to Bauchi, Kano and Plateau States
- A total of 83 human samples were received and 64 (87.7%) samples were tested. Of the tested samples, 7 (10.9%) were positive for Flu A, 6 (85.7%) were subtype A/H5 while 1 (14.3%) was unsub-typable.
- Official notification about the outbreak has been conveyed to the WHO as required by the International Health Regulations (IHR).
- Official report has also been sent to the authorities at both Federal level and the affected States.

- Avian influenza outbreak Emergency Operations Centre (EOC) at level 1 has been activated at national and in two states (Plateau and Gombe).
- Seven confirmed samples have been shipped to the WHO Collaborating Centre (WHO-CC) in the United States (US).for further characterisation.

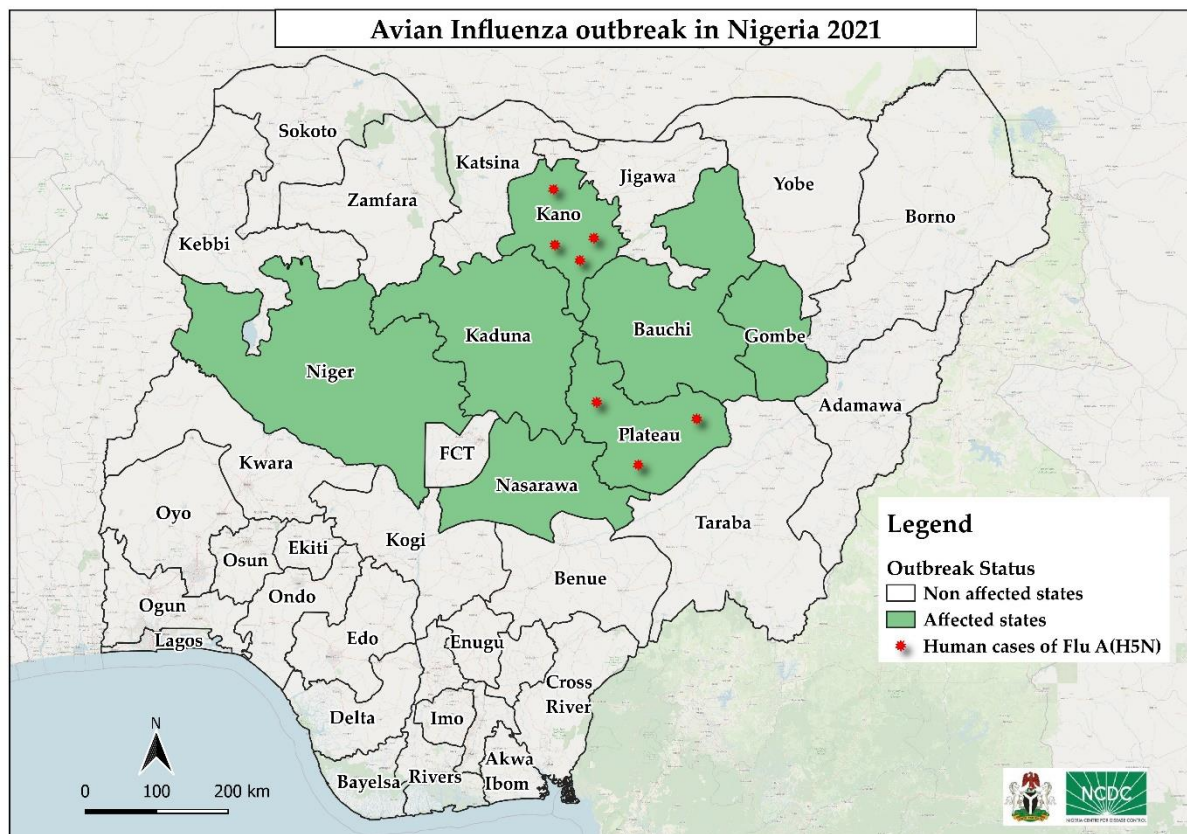


Fig 1: Confirmed Avian influenza cases by states in Nigeria, week 12, 2021

## Response Activities

- Second session of EOC conducted with review of outbreak situation, response Terms of Reference (TORs) and Incident Actions Plan (IAPs).
- Seven states: Kano, Plateau, Bauchi, Gombe, Kaduna, Nasarawa and Niger States have confirmed cases of Avian Influenza among poultry.
- Two states have reported seven (7) cases among humans – Kano (4) and Plateau (3)
- Only Kano, Plateau, Bauchi and Gombe States have had human contacts of birds followed up.
- Of the 83 contacts reported, 27 contacts were from 3 Local Government Areas (LGAs) (Nasarawa, Ungogo and Gwale) in Kano State, 18 contacts from 2 LGAs (Jos North and South) in Plateau State, 19 contacts from 2 LGAs (Bauchi and Toro) in Bauchi State, and 19 contacts from 3 LGAs (Kaltungo, Yamaltu Deba and Gombe) in Gombe State.
- All contacts were farmers, farm workers, bird handlers and traders.
- All contacts were still asymptomatic except one, presenting with catarrh.

- A total of 83 human nasopharyngeal/oropharyngeal samples have been collected from contacts of confirmed birds in 4 States: Kano (27), Plateau (18), Bauchi (19) and Gombe (19).
- A total of 13 blood samples have also been collected from the very-close contacts (human) of the birds in 3 States: Plateau (3), Bauchi (5), and Gombe (5).
- Of 83 human samples collected, 64 (87.7%) samples were analysed using Real time RT-PCR.
- Of 64 samples analysed, only 7 (10.9%) were positive for Flu A
- Of the 7 samples positive for Flu A, only 6 (85.7%) were positive for A/H5 while one (14.3%) was unsubtypeable.
- All seven positive samples have been shipped to WHO Coordinating center C for further lab analysis.
- Sensitisation was carried out by the National and State RRT to farm owners, workers, Live Bird Market (LBM) associations and communities in the affected States.
- Biosecurity measures were extensively discussed for the benefit of the farmers and communities.
- Distribution of Social and Behavioural Change Communication (SBCC) materials to farm owners, workers, LBM associations and community leaders.
- List of items that facilitate safety in farms was shared with farmers, and sensitisation of workers on hygiene and regular wearing of PPE in the farm was carried out.