

# SITUATION REPORT

## Nigeria Centre For Disease Control (NCDC)

NCDC.GOV.NG

PLOT 800 EBITU UKIWE STREET, JABI ABUJA, NIGERIA TOLL FREE CALL: 6232 E:info@ncdc.gov.ng

@NCDGov   

<b>TITLE:</b>	<b>UPDATE ON MONKEYPOX (MPX) IN NIGERIA</b>
<b>SERIAL NUMBER:</b>	<b>21</b>
<b>EPI-WEEK:</b>	<b>37</b>
<b>DATE:</b>	<b>September 18, 2022</b>

**Table 1 – Key Indicators**

Key Indicators	Number
Total confirmed cases in Epi Week 37, 2022	<b>51</b>
Total suspected cases in Epi Week 37, 2022	<b>89</b>
Total suspected cases from January 1 <sup>st</sup> to September 18 <sup>th</sup> , 2022 (Epi week 1 to 37)	<b>969</b>
Total confirmed cases from January 1 <sup>st</sup> to September 18 <sup>th</sup> , 2022 (Epi week 1 to 37)	<b>400</b>
Total deaths from January 1 <sup>st</sup> to September 18 <sup>th</sup> , 2022 (Epi week 1 to 37)	7
Total deaths Sept 2017 - September 18 <sup>th</sup> , 2022	15
Total confirmed cases in 2017	88
Total confirmed cases in 2018	49
Total confirmed cases in 2019	47
Total confirmed cases in 2020	8
Total confirmed cases in 2021	34
Grand total confirmed cases (Sept 2017 – September 18 <sup>th</sup> , 2022)	626
Grand total suspected cases (Sept 2017 – September 18 <sup>th</sup> , 2022)	1481

- Fifty-one (51) new confirmed cases** in Epi week 37 (12<sup>th</sup> to 18<sup>th</sup> September 2022) from seventeen (17) states – Lagos (21), Bayelsa (4), Abia (3), Kaduna (3), Nasarawa (3), Ondo (3), Edo (2), Imo (2), Oyo (2), Akwa Ibom (1), Benue (1), Katsina (1), Kebbi (1) Ogun (1), Plateau (1), Rivers (1) and Taraba (1) from Eighty-nine (89) suspected cases reporting from twenty-two (22) states. The reporting states are: – Lagos (30), Kaduna (8), Imo (7), Nasarawa (5), Abia (4), Bayelsa (4), FCT (4), Katsina (3), Ogun (3), Ondo (3), Oyo (2), Edo (2), Anambra (2), Plateau (2), Rivers (2), Taraba (2), Akwa Ibom (1), Bauchi (1), Benue (1), Ekiti (1), Kano (1) and Kebbi (1)
- From 1<sup>st</sup> January to 18<sup>th</sup> September 2022, Nigeria has recorded 400 confirmed cases (260 male, 140 female) from thirty-one (31) states – Lagos (97), Ondo (27), Abia (25), Bayelsa (24), Rivers (22), Imo (19), Edo (18), Delta (16), Ogun (16), Adamawa (15), Anambra (12), Nasarawa (12), FCT (11), Oyo (8), Plateau (8), Taraba (7), Katsina (7), Borno (6), Akwa Ibom (6), Kaduna (6), Benue (5), Ebonyi (5), Kano (5), Gombe (5), Kwara (5), Cross River (4), Kogi (3), Osun (3), Niger (1), Bauchi (1) and Kebbi (1).
- Only Jigawa state is yet to record a suspected case while Ekiti, Enugu, Sokoto, Zamfara, Yobe & Jigawa states are yet to record a confirmed case in 2022.
- Seven (7) associated deaths have been recorded from 7 states in 2022 – Delta (1), Lagos (1), Ondo (1) and Akwa Ibom (1), Kogi (1), Taraba (1) and Imo (1). **CFR 1.8%**



- Overall, since the re-emergence of monkeypox in September 2017, 1481 suspected cases have been reported from 35 states & the Federal Capital territory with 626 (42.3%) confirmed (408 male, 218 female) from 33 states - Lagos (127), Rivers (74), Bayelsa (67), Delta (45), Edo (28), Abia (28), Imo (27), Ondo (27), Cross River (18), FCT (17), Ogun (17), Adamawa (15), Anambra (14), Oyo (14), Nasarawa (14), Akwa Ibom (13), Plateau (11), Benue (7), Taraba (7), Katsina (7), Ebonyi (6), Borno (6), Kaduna (6), Kano (5), Kwara (5), Gombe (5), Enugu (4), Kogi (3), Osun (3), Ekiti (2), Niger (2), Bauchi (1) and Kebbi (1).
- Fifteen (15) deaths have been recorded since September 2017 (CFR= 2.4%) in eleven states - Lagos (3), Edo (2), Imo (2), Cross River (1), FCT (1), Rivers (1), Ondo (1) Delta (1), Akwa Ibom (1), Taraba (1) and Kogi (1).

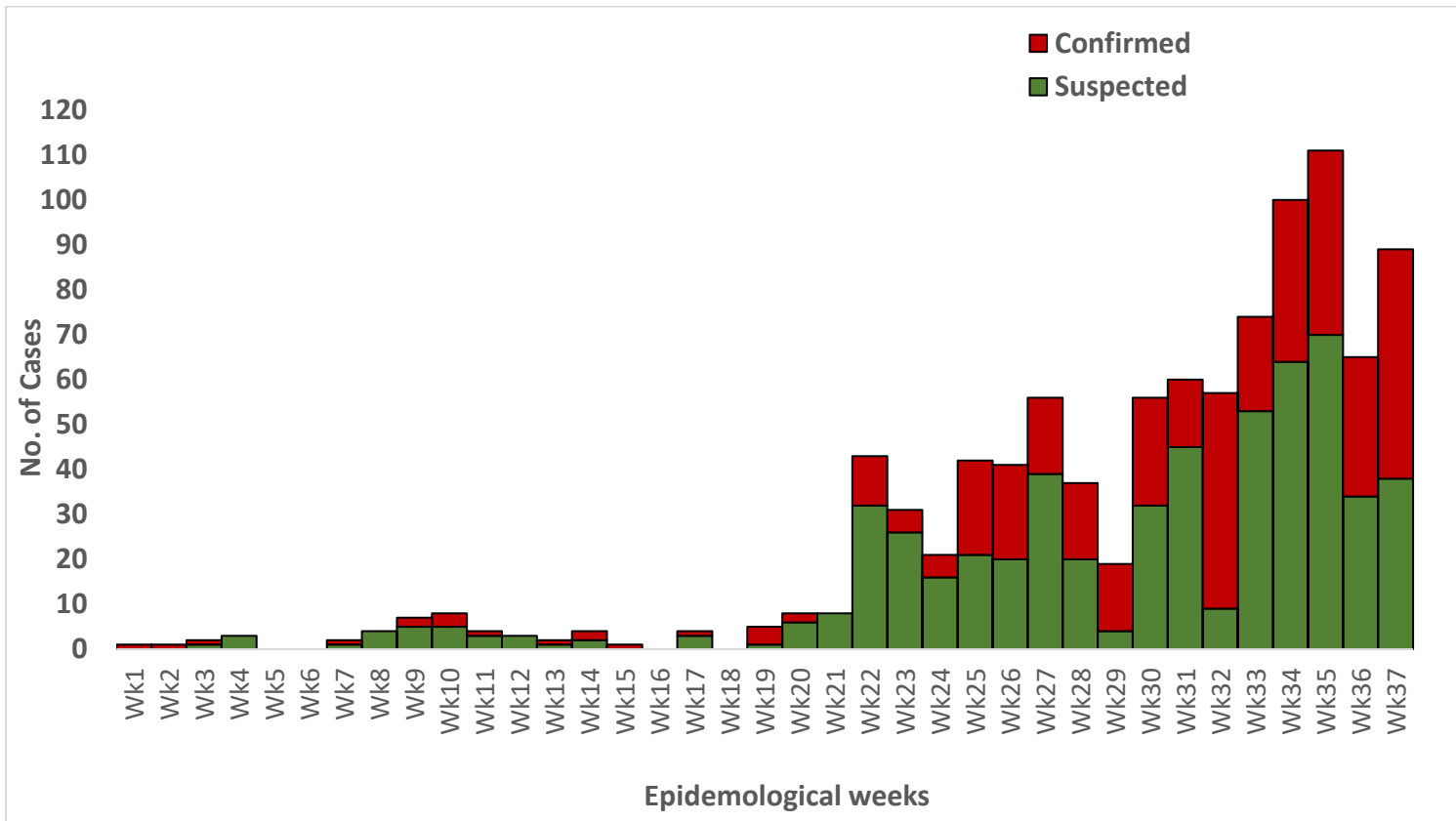


Figure 1: Epidemic Curve of Suspected & Confirmed MPX Cases Jan. 2022 till date

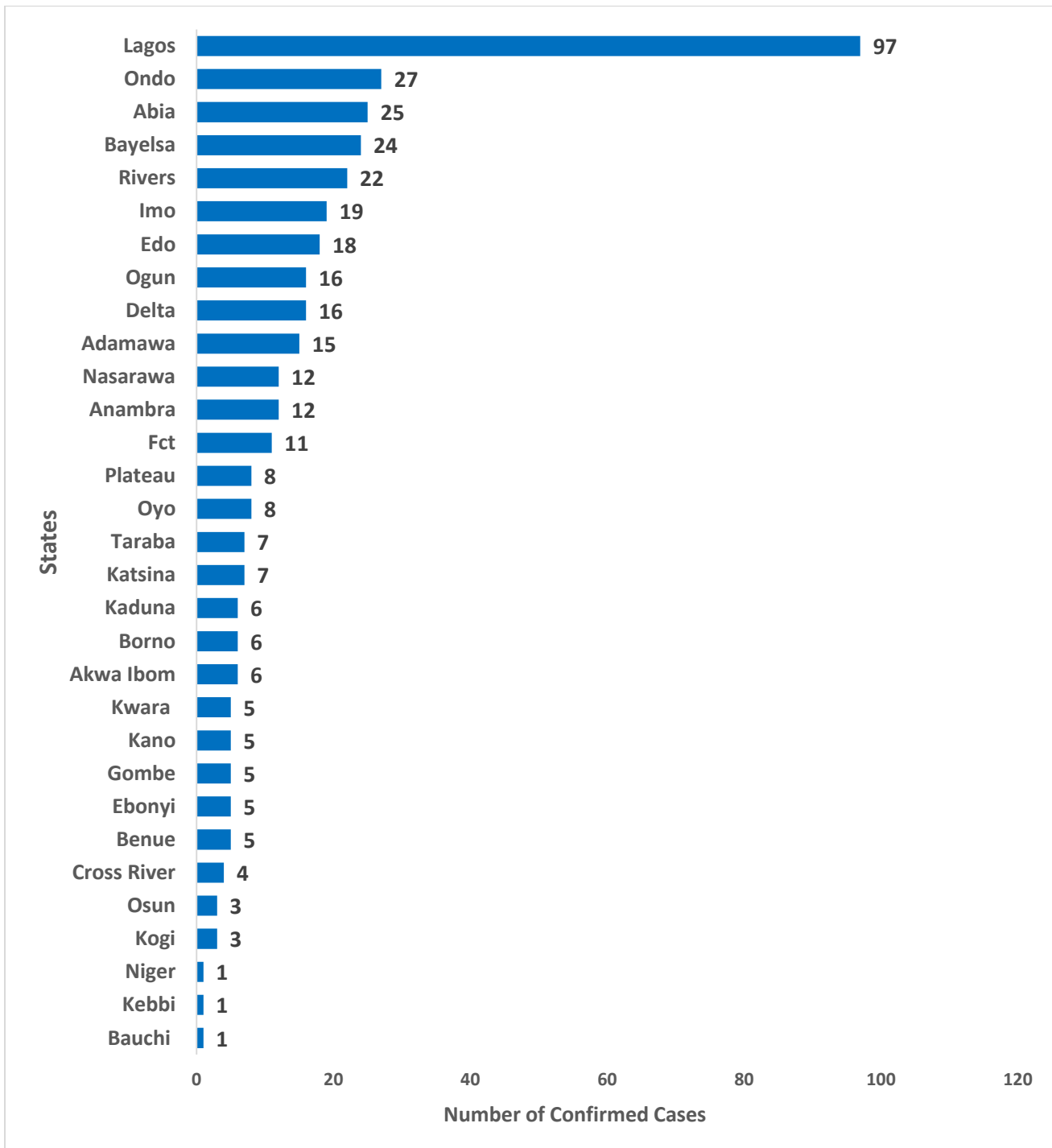


Figure 2: Bar chart Showing confirmed monkeypox cases by state from January 1<sup>st</sup> – 18<sup>th</sup> September 2022

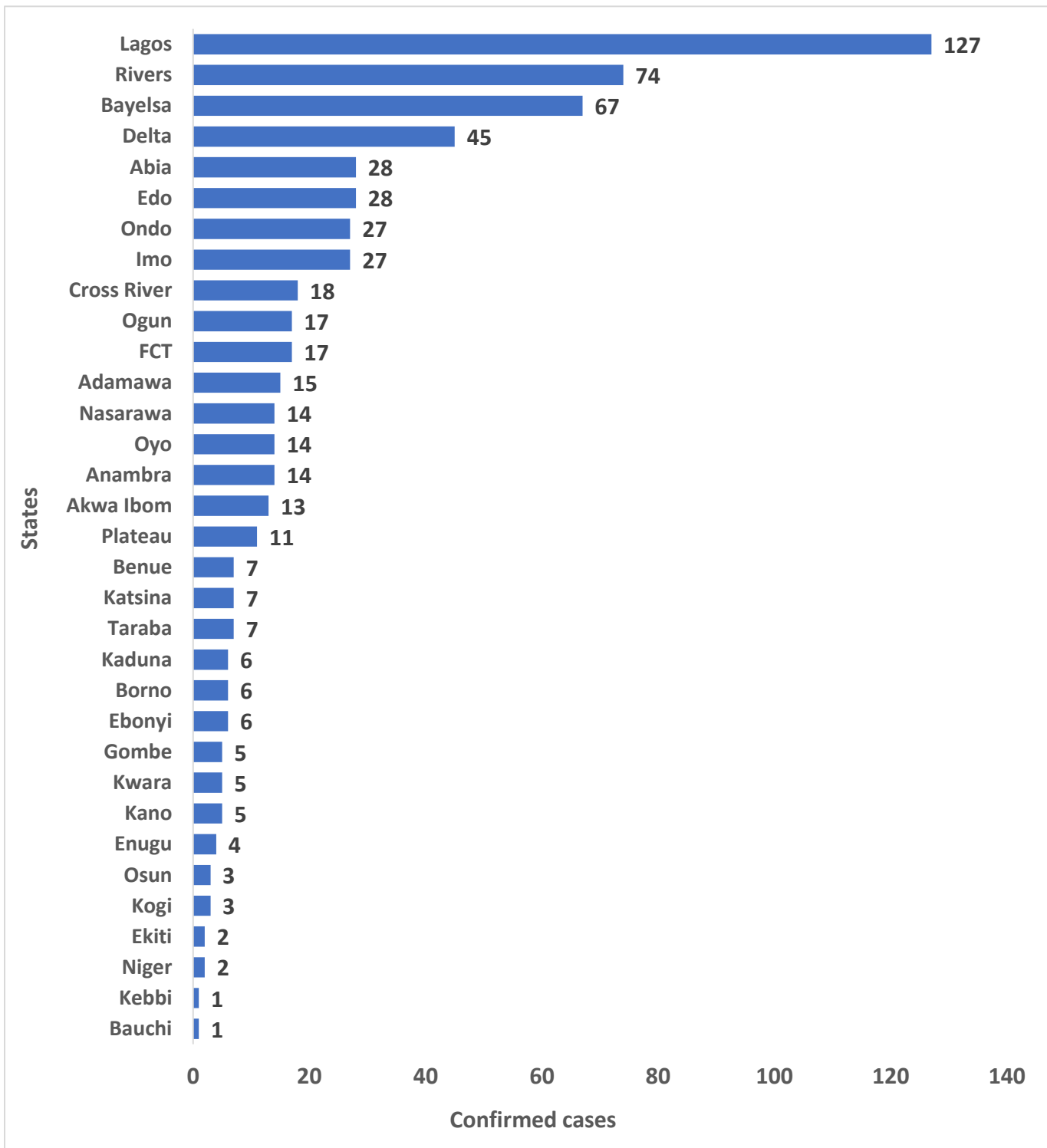


Figure 3: Bar chart Showing confirmed monkeypox cases by state, September 2017 – 18<sup>th</sup> September 2022

Table 2: Nigeria confirmed monkeypox cases by state, September 2017 – 18<sup>th</sup> September 2022

State	2017	2018	2019	2020	2021	2022	Total
Lagos	4	1	15	4	6	97	127
Rivers	25	14	7	1	5	22	74
Bayelsa	19	11	7	0	6	24	67
Delta	3	6	10	1	9	16	45
Edo	4	1	1	0	4	18	28
Abia	1	2	0	0	0	25	28
Imo	5	2	1	0	0	19	27
Ondo	0	0	0	0	0	27	27
Cross River	9	3	1	0	1	4	18
FCT	5	0	0	0	1	11	17
Ogun	0	0	0	0	1	16	17
Adamawa	0	0	0	0	0	15	15
Anambra	0	1	1	0	0	12	14
Oyo	1	3	2	0	0	8	14
Nasarawa	1	1	0	0	0	12	14
Akwa Ibom	6	0	1	0	0	6	13
Plateau	0	2	0	1	0	8	11
Taraba	0	0	0	0	0	7	7
Katsina	0	0	0	0	0	7	7
Benue	2	0	0	0	0	5	7
Ebonyi	0	0	0	1	0	5	6
Borno	0	0	0	0	0	6	6
Kaduna	0	0	0	0	0	6	6
Kano	0	0	0	0	0	5	5
Kwara	0	0	0	0	0	5	5
Gombe	0	0	0	0	0	5	5
Enugu	1	2	1	0	0	0	4
Kogi	0	0	0	0	0	3	3
Osun	0	0	0	0	0	3	3
Niger	0	0	0	0	1	1	2
Ekiti	2	0	0	0	0	0	2
Bauchi	0	0	0	0	0	1	1
Kebbi	0	0	0	0	0	1	1
<b>Grand Total</b>	<b>88</b>	<b>49</b>	<b>47</b>	<b>8</b>	<b>34</b>	<b>400</b>	<b>626</b>



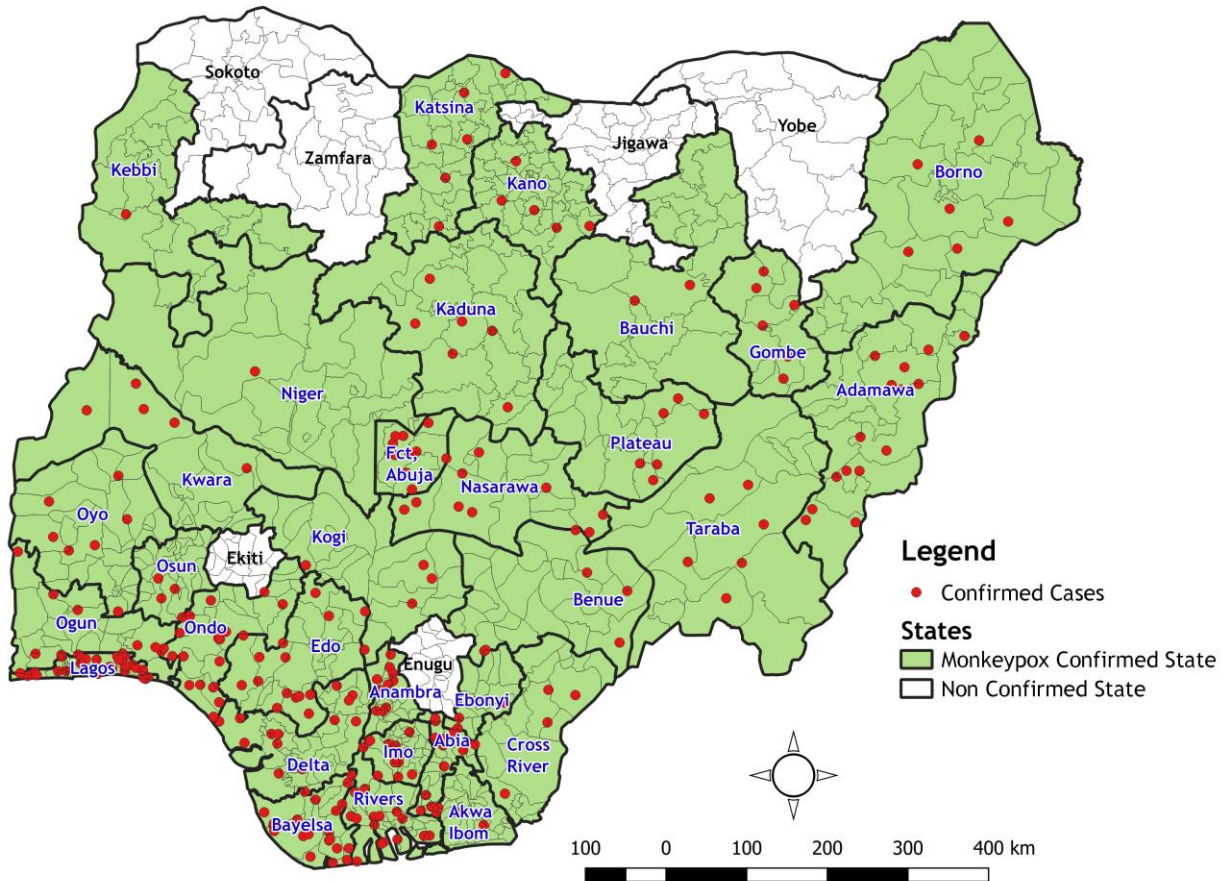


Figure 4: Map of Nigeria Showing States with Confirmed MPX Cases from January 2022 till date (31 states)

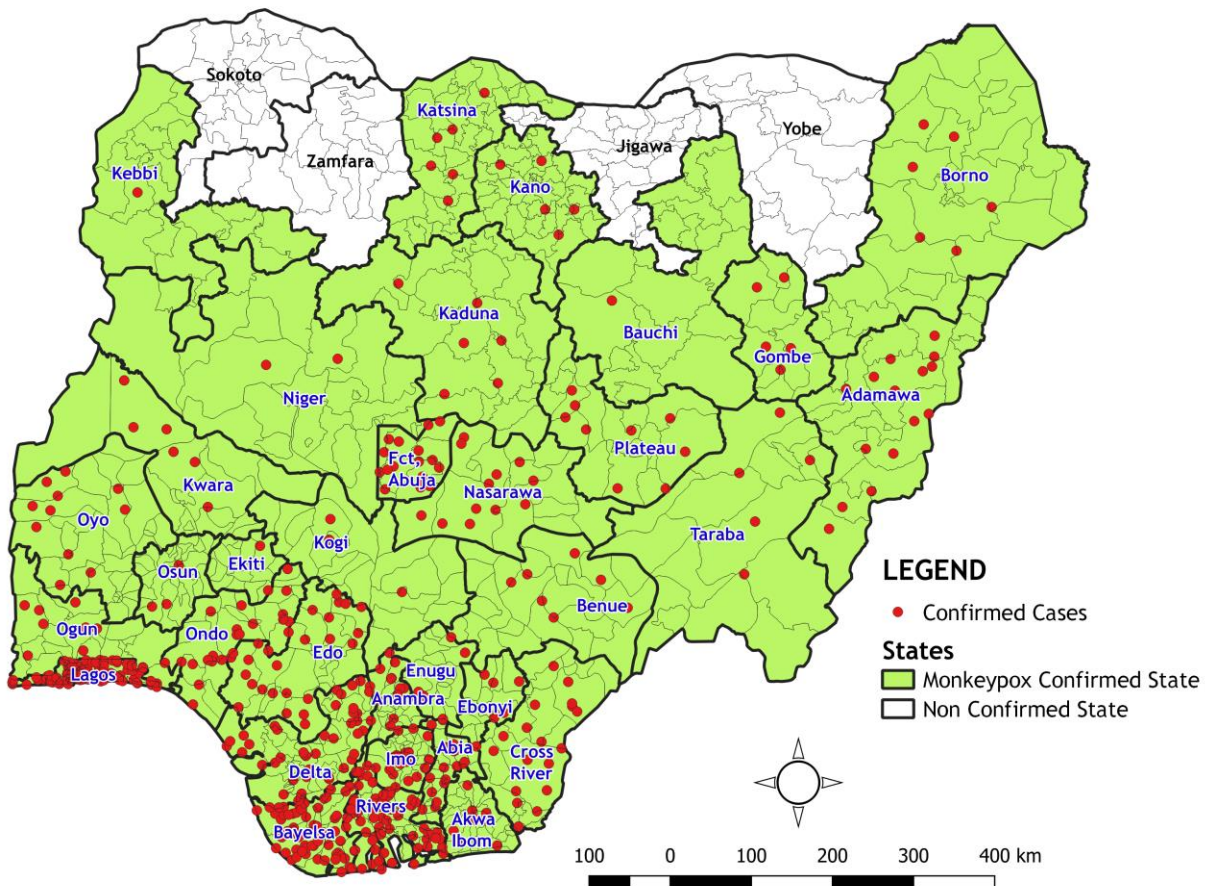
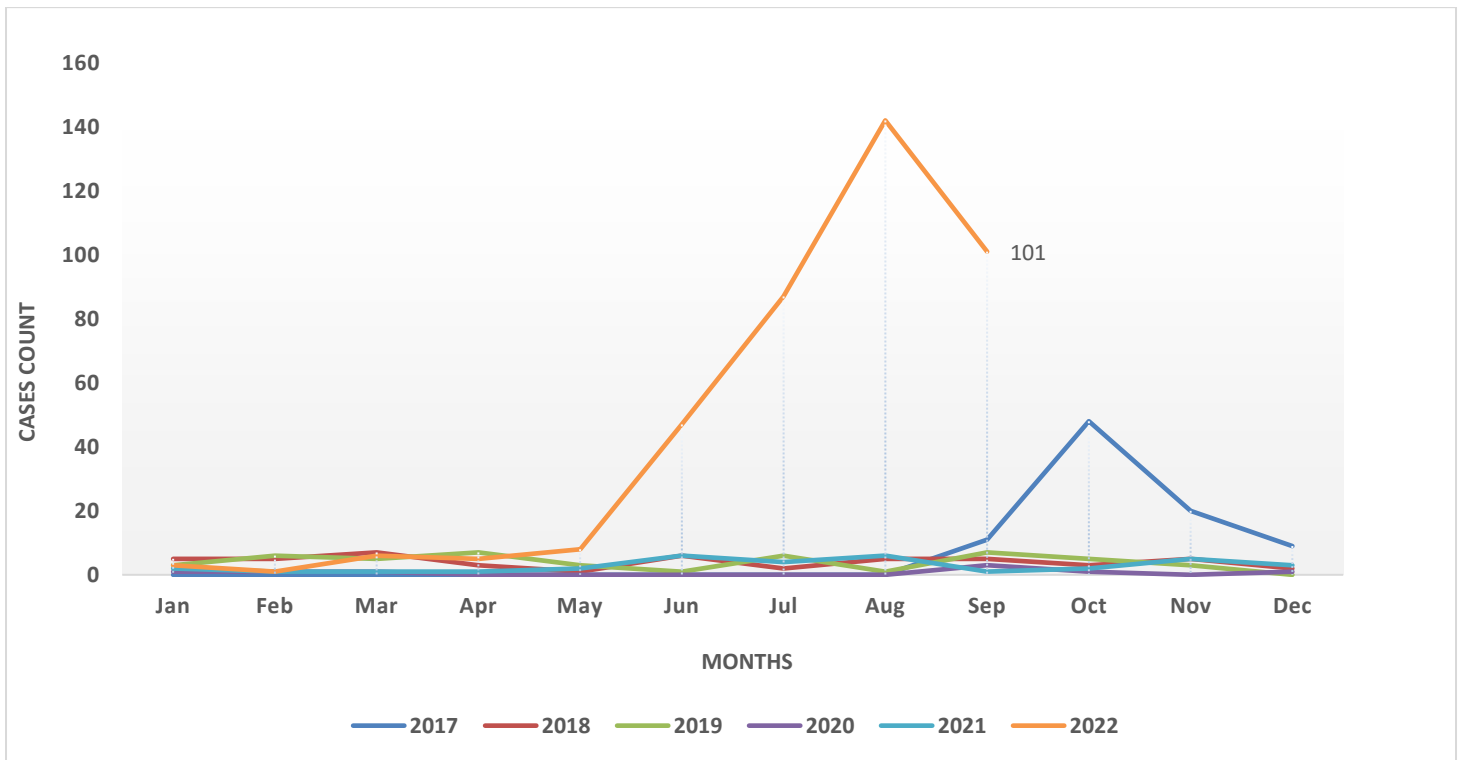


Figure 5: Map of Nigeria Showing States with Confirmed MPX Cases from September 2017 till date (33 states)



**Figure 6:** Nigeria confirmed Monkeypox cases by the year of incidence- September 2017 to 18<sup>th</sup> September 2022

**Table 3:** Age distribution of confirmed Monkeypox cases September 2017 – 18<sup>th</sup> September 2022

Age Group	2017	2018	2019	2020	2021	2022	Total
0-10 Years	7	5	1	0	1	55	69
11-20 Years	12	4	1	0	4	67	88
21-30 Years	34	13	13	4	10	91	165
31- 40 Years	26	17	22	4	13	120	202
41-50 Years	9	10	9	0	5	48	81
51-60 Years	0	0	1	0	1	19	21
<b>Total</b>	<b>88</b>	<b>49</b>	<b>47</b>	<b>8</b>	<b>34</b>	<b>400</b>	<b>626</b>

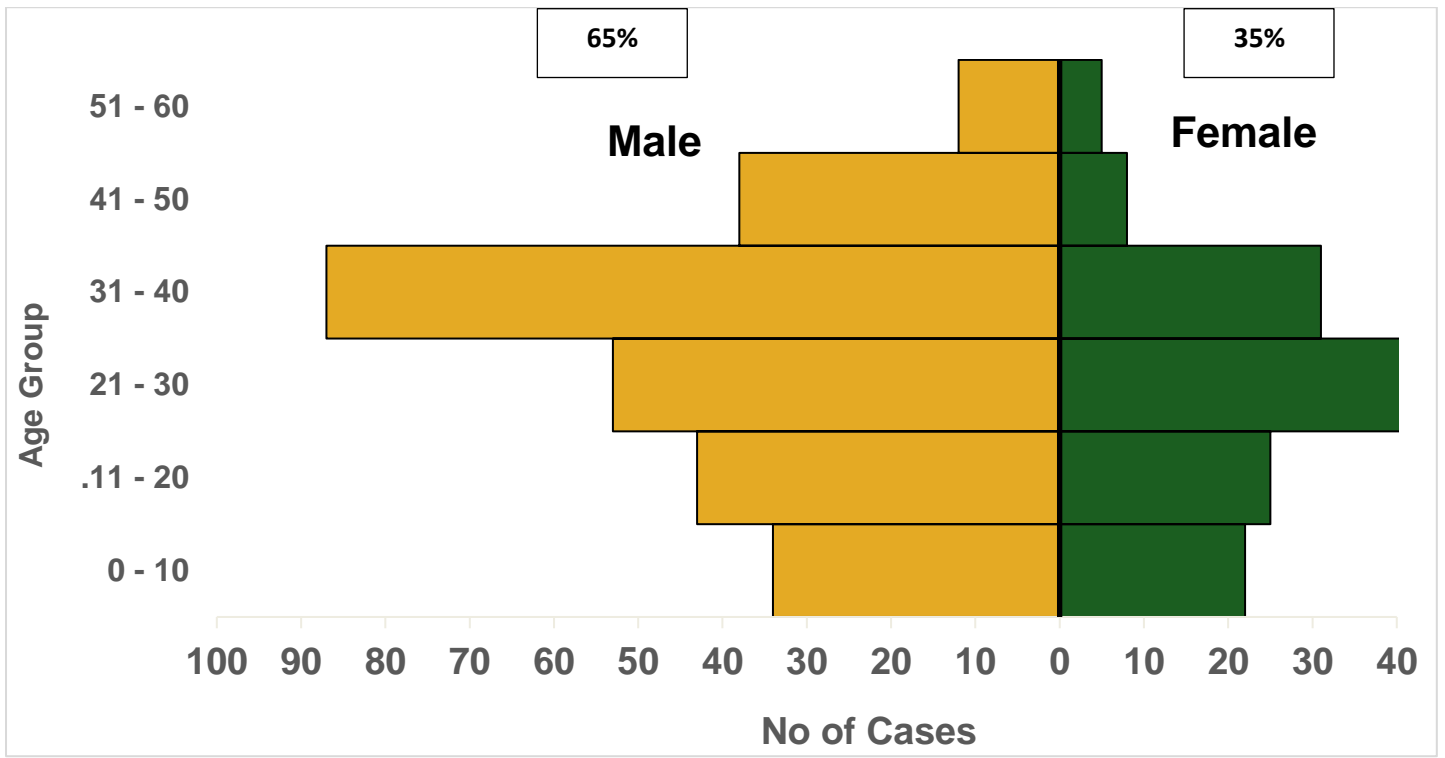


Figure 7: Age and sex distribution of Nigeria confirmed monkeypox cases January 1<sup>st</sup> – 18<sup>th</sup> September 2022

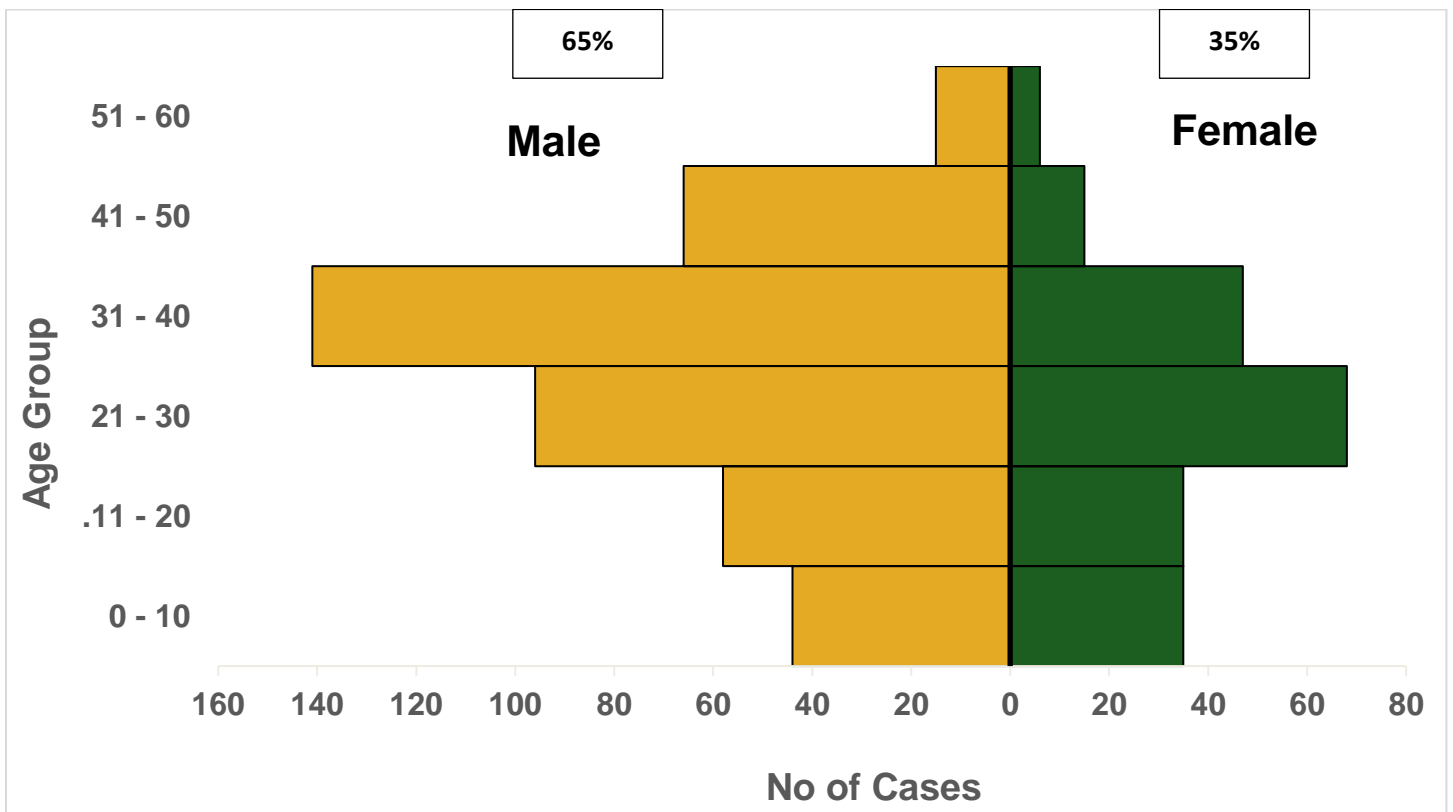


Figure 8: Age and sex distribution of Nigeria confirmed monkeypox cases September 2017 – 18<sup>th</sup> September 2022



## Response activities

Pillar	Activities to date	Next steps
<b>Coordination</b>	Daily operations of Monkeypox Emergency Operations Centre  Review of surveillance data with pillar leads	Coordination of concept note development with pillar leads
<b>Risk communication</b>	Daily tracking, monitoring and response to rumours and misinformation of Monkeypox in Nigeria  Collaboration with partners to develop Monkeypox-specific awareness content	Dissemination of jingles in three major languages and pidgin to states for airing  Dissemination of electronic copies of Information, Education & Communication materials to states  Enhance Monkeypox engagement on social & traditional media
<b>Surveillance</b>	Production of draft case definition for review  Providing off-site support to states on case identification, reporting and response	Review draft case definition with key stakeholders  Follow up with states to ensure data completeness on SORMAS
<b>IPC</b>	Conducted closure workshop for 74 IPC Change Agents from 20 facilities in Ebonyi, Edo and Ondo states  MPX HCW infection surveillance continues across the Orange Network sites and states	Capacity building on IPC workplan development and MPX from APIN-Orange Network  Continuous support to states and facilities on IPC program
<b>Case management</b>	Inaugural meeting to develop guidelines for use of antivirals for management of Monkeypox	Ensure up-to-date statistics on cases at Treatment Centre and those on home-based care
<b>POE</b>	Screening at points of entry for persons of Interest	Continue ongoing screening activities at points of entry
<b>Laboratory</b>	PCR testing of samples at National reference Laboratory  Off-site support to states on sample collection from sites to testing lab.	Turn around time review of samples  Incorporation of the Central Public Health Laboratory to the MPXV testing network

## **Notes on this report**

### ***Data Source***

Information for this disease was case-based data retrieved from the National Monkeypox Emergency Operations Centre.

### ***Calculations***

- Case Fatality Rate (CFR) for this disease is reported for confirmed cases only