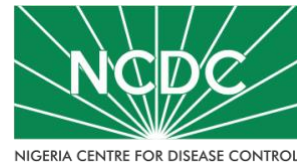


COVID-19 SITUATION REPORT

SITUATION REPORT 166

Wednesday, 12th August 2020



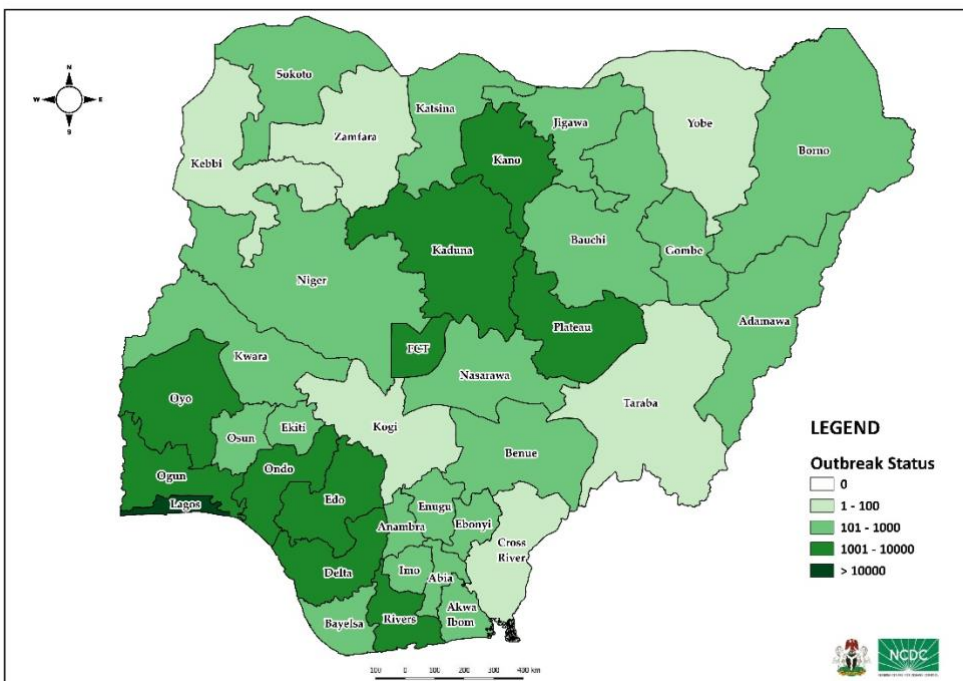
DATA AS REPORTED AND ACCURATE BY NCDC AS AT MIDNIGHT 12TH AUGUST 2020

HIGHLIGHTS

- Four hundred and fifty-three (**453**) confirmed cases were reported in the last 24 hours from **16** states – Lagos (113), FCT (72), Plateau (59), Enugu (55), Kaduna (38), Ondo (32), Osun (26), Ebonyi (20), Ogun (9), Delta (8), Borno (7), Akwa Ibom (6), Oyo (5), Bauchi (1), Ekiti (1) and Kano (1).
- Three hundred and thirty-four (**334**) cases were discharged in the last 24 hours in **16** states – Enugu (100), Kaduna (63), Ebonyi (59), Rivers (26), Plateau (24), Adamawa (14), Anambra (12), Akwa Ibom (10), FCT (6), Bayelsa (5), Oyo (5), Ogun (3), Ondo (3), Ekiti (2), Imo (1) and Lagos (1).
- No deaths were recorded in the last 24 hours.
- All **36** states in Nigeria, and the FCT, have reported a confirmed case.
- The number of confirmed COVID-19 cases globally has crossed the **20 million** mark.

STATE OF THE NATION

Figure 1: Map of Nigeria showing 36 states and FCT affected by COVID-19



SITUATION UPDATES

Total (New in the last 24 hours)

SAMPLES TESTED

341,421 (3,337)

CONFIRMED CASES

47,743 (453)

AFFECTED STATES INCLUDING FCT

37

DISCHARGED CASES

33,943 (334)

CONFIRMED FATALITIES

956 (0) – 2.0% CFR

DEMOGRAPHICS

MALE – 30,690 (64%)

FEMALE – 17,053 (36%)

MOST AFFECTED AGE GROUP

31 - 40 (25%)

PERSONS OF INTEREST

11,328 (Total)

11,187 (98.8% - Exceeded Follow Up)

PROVENANCE

TRAVEL HISTORY – 847 (2%)

CONTACTS – 11,630 (24%)

UNKNOWN EXPOSURE – 35,266 (74%)

GLOBAL UPDATES

TOTAL NUMBER OF CASES

20,162,474 (737,417 deaths)

COUNTRIES & TERRITORIES AFFECTED*

216

*Excluding the 2 International Conveyance

GENERAL FACT SHEET – DATA AS AT 12th AUGUST 2020

Table 1: States with reported laboratory-confirmed COVID-19 cases, recoveries, deaths and days since last reported case

STATES	CONFIRMED CASES		DISCHARGED CASES		DEATHS		TOTAL ACTIVE CASES	DAYS SINCE LAST REPORTED CASE
	TOTAL	NEW	TOTAL	NEW	TOTAL	NEW		
Lagos	16,187	113	13,129	1	195	0	2,863	0
FCT	4,597	72	1,313	6	46	0	3,238	0
Oyo	2,895	5	1,428	5	31	0	1,436	0
Edo	2,399	0	2,121	0	100	0	178	1
Rivers	1,972	0	1,747	26	55	0	170	1
Kaduna	1,666	38	1,472	63	12	0	182	0
Kano	1,644	1	1,313	0	54	0	277	0
Plateau	1,643	59	686	24	23	0	934	0
Delta	1,621	8	1,430	0	44	0	147	0
Ogun	1,506	9	1,266	3	24	0	216	0
Ondo	1,356	32	770	3	28	0	558	0
Enugu	969	55	600	100	19	0	350	0
Ebonyi	908	20	852	59	26	0	30	0
Kwara	882	0	549	0	22	0	311	1
Katsina	746	0	457	0	24	0	265	9
Borno	697	7	576	0	36	0	85	0
Osun	678	26	341	0	13	0	324	0
Abia	663	0	517	0	5	0	141	1
Gombe	635	0	562	0	23	0	50	1
Bauchi	579	1	530	0	14	0	35	0
Imo	485	0	162	1	10	0	313	1
Benue	430	0	139	0	9	0	282	1
Nasarawa	371	0	223	0	8	0	140	1
Bayelsa	346	0	316	5	21	0	9	5
Jigawa	322	0	308	0	11	0	3	27
Akwa Ibom	241	6	207	10	8	0	26	0
Niger	226	0	165	0	12	0	49	8
Ekiti	194	1	81	2	2	0	111	0
Adamawa	185	0	104	14	12	0	69	5
Anambra	156	0	131	12	18	0	7	1
Sokoto	154	0	138	0	16	0	0	18
Kebbi	90	0	82	0	8	0	0	22
Taraba	78	0	55	0	4	0	19	1
Zamfara	77	0	71	0	5	0	1	25
Cross River	73	0	42	0	8	0	23	2
Yobe	67	0	57	0	8	0	2	13
Kogi	5	0	3	0	2	0	0	40
Total	47,743	453	33,943	334	956	0	12,844	

States, including FCT, are arranged in descending order by number of total confirmed cases and then alphabetical order

SELECTED CHARTS

Figure 2: Daily Epidemic Curve of Confirmed Cases (WK9 – WK33)

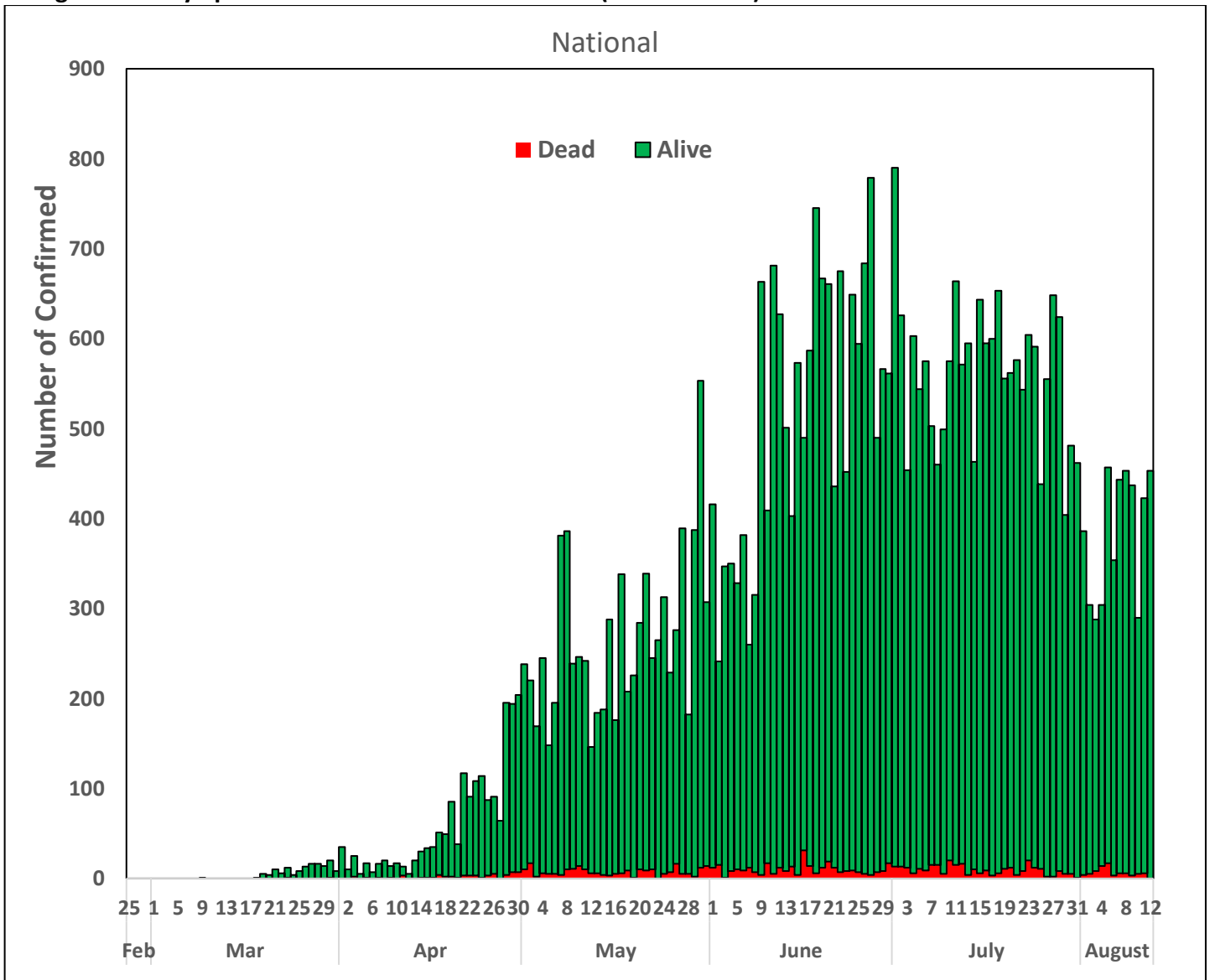
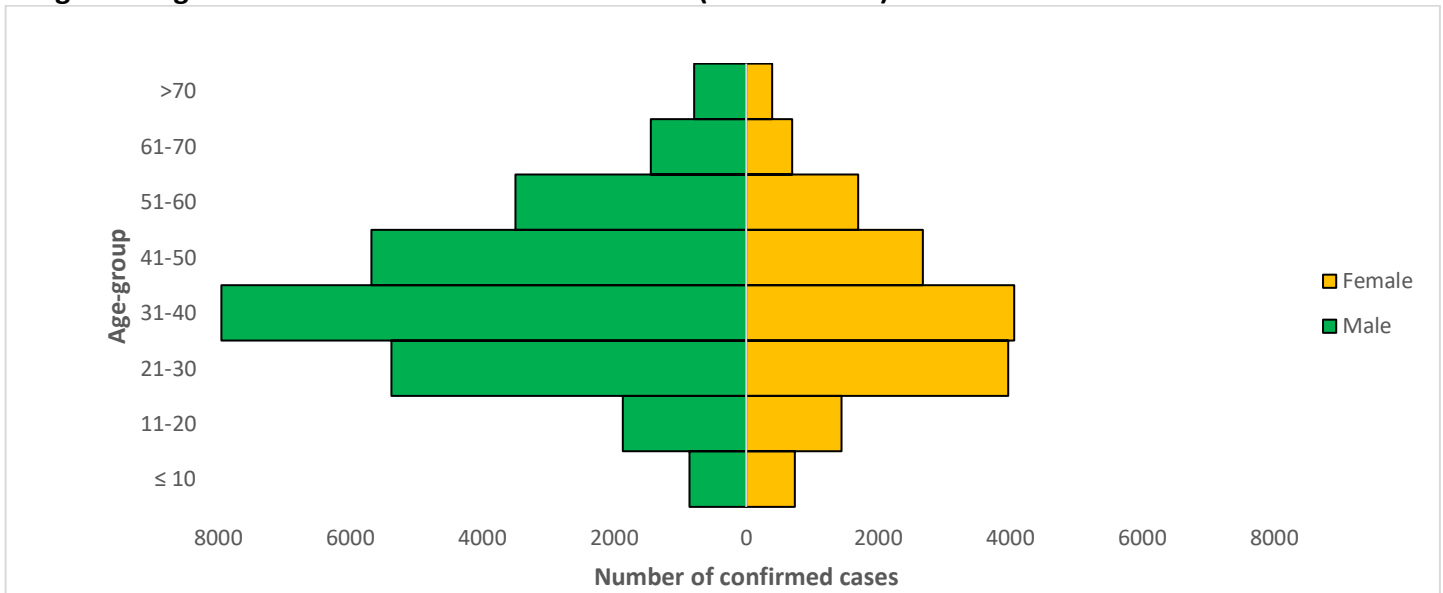


Figure 3: Age-Sex Distribution of Confirmed Cases (WK9 – WK33)



PREPAREDNESS

Since the confirmation of the first case on 27th February 2020, the NCDC has released advisories and statements to help Nigerians and affected groups in particular to respond to the pandemic

- NCDC has launched an online course on [Infection, Prevention and Control \(IPC\) for COVID-19](#) NCDC eLearning platform
- Ahead of forthcoming elections in the country, NCDC has issued [Guidelines for Conducting Elections During the COVID-19 Outbreak in Nigeria](#).
- To protect our elders, and those with pre-existing medical conditions, NCDC has issued an [Advisory for Vulnerable Groups](#).
- NCDC has released [guidelines on the re-opening of places for worship](#).
- NCDC has released [Strategies to Improve Surveillance for COVID-19 Guidance for States](#)
- The Nigeria Police Force has released COVID-19 operational guidelines for the [Police and other Law Enforcement Agencies](#) in Nigeria
- Guidelines have been issued for the [safe transportation of remains of persons suspected or confirmed to have died of COVID-19](#)
- Information on diagnostics of the COVID-19 virus can be found in our [detailed FAQ document](#).
- To increase our testing capacity, NCDC has issued guidelines for the [integration of private labs](#).
- Guidelines for [businesses and employers](#) have been updated.
- NCDC has updated its [case definition](#) , [community case definition](#) and [case management guide](#).
- NCDC releases periodic [public health advisories](#) to Nigerians on the COVID-19 disease.
- To adhere to post-lockdown measures, NCDC has released an [advisory on the use of face masks](#), as well as information on the [Use of Cloth face masks](#) and [how to make your cloth face masks](#).
- NCDC has released guidelines for the [management of pregnant women and nursing mothers](#) during the pandemic.
- To address burials of loved ones who die from COVID-19, guidelines have been issued to advise on the [management of dead bodies](#).
- For health centres managing cases, the following documents have been released- a guideline for the [Rational Use of Personal Protective Equipment in the care of COVID-19 cases](#).
- As part of plans to increase the testing capacity of the country, the NCDC published a [National Strategy to Scale Up Access to Coronavirus Disease Testing in Nigeria](#) document.
- The Presidential Task Force has published policies and announcements on COVID-19 [available on the website of the Presidency](#) – including presidential addresses, task force updates and information on livelihood and economic support.

RESPONSE

On 28th February 2020, a multi-sectoral Emergency Operations Centre (EOC) was activated at Level 3 – the highest emergency level in Nigeria –led by NCDC in close coordination with the State Public Health EOCs (PHEOC).

- **Ongoing training of surveillance officers to commence the deployment of Surveillance and Outbreak Response Management and Analysis System tool (SORMAS) in Gombe State**
- **Developed and shared list of essential laboratory commodities and supplies for COVID-19 to states**
- **Trained 594 Healthcare Workers on Infection Prevention and Control (IPC) from private and public health facilities in Abia State**
- **Shared a press release and conducted radio interviews on World Mask Week**
- **Developed 91 jingles in different languages and shared with states and stakeholders**
- Commenced the training of over 20 researchers in Delta State on the protocol and data collection tool for a prospective cohort study
- Launched the World Mask Week campaign during the Presidential Task Force press briefing by the Honourable Minister of Health and DG NCDC
- All education materials can be found via www.covid19.ncdc.gov.ng