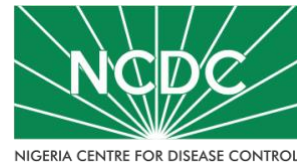


# COVID-19 SITUATION REPORT

## SITUATION REPORT 149

Sunday, 26<sup>th</sup> July 2020



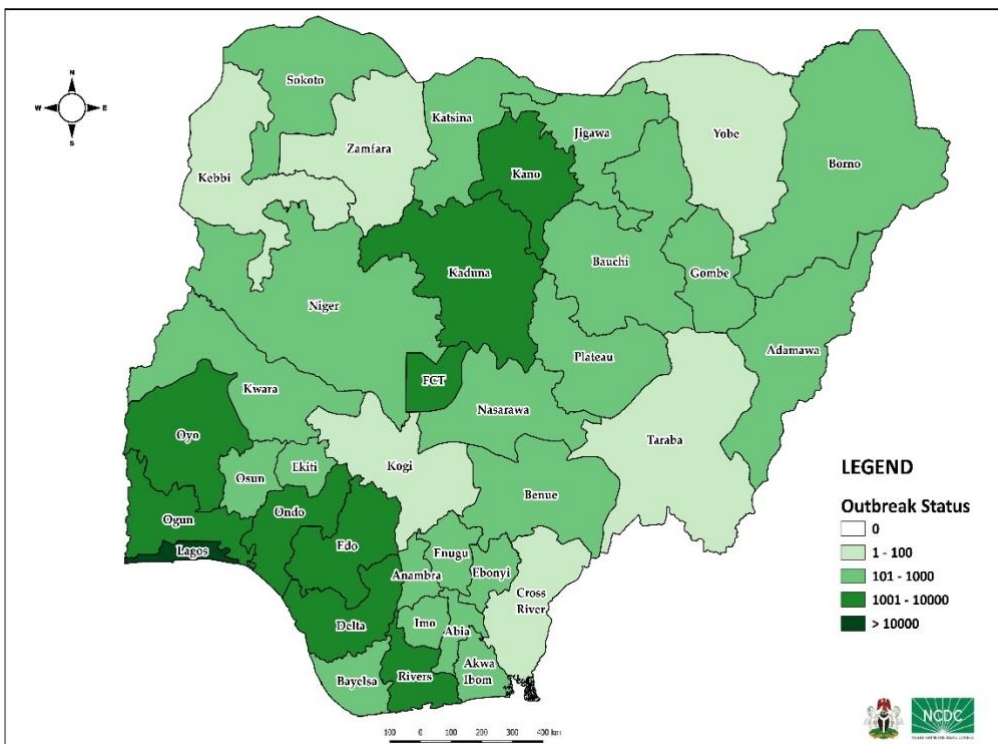
DATA AS REPORTED AND ACCURATE BY NCDC AS AT MIDNIGHT 26<sup>TH</sup> JULY 2020

### HIGHLIGHTS

- Five hundred and fifty-five (555) confirmed cases were reported in the last 24 hours from **18** states – Lagos (156), Kano (65), Ogun (57), Plateau (54), Oyo (53), Benue (43), FCT (30), Ondo (18), Kaduna (16), Akwa Ibom (13), Gombe (13), Rivers (12), Ekiti (9), Osun (8), Cross River (3), Borno (2), Edo (2) and Bayelsa (1)
- Four hundred and twenty-six (426) cases were discharged in the last 24 hours in **11** states – Rivers (172), Ondo (100), Borno (37), FCT (31), Ogun (25), Plateau (16), Edo (15), Kano (15), Kaduna (8), Cross River (6) and Yobe (1).
- Two (2) deaths were recorded in the last 24 hours in **one** state – Cross River (2)
- All **36** states in Nigeria, and the FCT, have reported a confirmed case.

### STATE OF THE NATION

Figure 1: Map of Nigeria showing 36 states and FCT affected by COVID-19



### SITUATION UPDATES

Total (New in the last 24 hours)

SAMPLES TESTED

**266,323 (3,744)**

CONFIRMED CASES

**40,532 (555)**

AFFECTED STATES INCLUDING FCT

**37**

DISCHARGED CASES

**17,374 (426)**

CONFIRMED FATALITIES

**858 (2) – 2.1% CFR**

DEMOGRAPHICS

MALE – 26,107 (64%)

FEMALE – 14,425 (36%)

MOST AFFECTED AGE GROUP

31 - 40 (25%)

PERSONS OF INTEREST

**11,077 (Total)**

**10,908 (98.5% - Exceeded Follow Up)**

PROVENANCE

TRAVEL HISTORY – 719 (2%)

CONTACTS – 10,084 (25%)

UNKNOWN EXPOSURE – 29,729 (73%)

GLOBAL UPDATES

TOTAL NUMBER OF CASES

**15,785,641 (640,016 deaths)**

COUNTRIES & TERRITORIES AFFECTED\*

**213**

\*Excluding the 2 International Conveyance

## GENERAL FACT SHEET – DATA AS AT 26<sup>TH</sup> JULY 2020

Table 1: States with reported laboratory-confirmed COVID-19 cases, recoveries, deaths and days since last reported case

STATES	CONFIRMED CASES		DISCHARGED CASES		DEATHS		TOTAL ACTIVE CASES	DAYS SINCE LAST REPORTED CASE
	CUMULATIVE	NEW	CUMULATIVE	NEW	CUMULATIVE	NEW		
Lagos	14,456	156	2,087	0	192	0	12,177	0
FCT	3,481	30	1,053	31	41	0	2,387	0
Oyo	2,570	53	1,148	0	24	0	1,398	0
Edo	2,167	2	1,409	15	77	0	681	0
Rivers	1,652	12	1,314	172	52	0	286	0
Kano	1,520	65	1,205	15	53	0	262	0
Delta	1,464	0	634	0	40	0	790	1
Kaduna	1,365	16	1,040	8	12	0	313	0
Ogun	1,301	57	1,032	25	23	0	246	0
Ondo	1,061	18	448	100	22	0	591	0
Plateau	834	54	446	16	19	0	369	0
Ebonyi	759	0	580	0	24	0	155	1
Enugu	741	0	425	0	17	0	299	1
Katsina	733	0	449	0	23	0	261	1
Kwara	711	0	202	0	16	0	493	1
Borno	611	2	559	37	35	0	17	0
Gombe	571	13	521	0	23	0	27	0
Bauchi	538	0	516	0	13	0	9	1
Abia	536	0	426	0	4	0	106	1
Imo	465	0	108	0	9	0	348	2
Osun	443	8	214	0	10	0	219	0
Benue	337	43	53	0	6	0	278	0
Bayelsa	327	1	251	0	21	0	55	0
Jigawa	322	0	308	0	11	0	3	10
Nasarawa	308	0	113	0	8	0	187	1
Akwa Ibom	221	13	121	0	7	0	93	0
Niger	167	0	133	0	12	0	22	2
Sokoto	154	0	137	0	16	0	1	1
Adamawa	140	0	85	0	9	0	46	1
Anambra	132	0	75	0	12	0	45	6
Ekiti	113	9	55	0	2	0	56	0
Kebbi	90	0	79	0	7	0	4	5
Zamfara	77	0	71	0	5	0	1	8
Yobe	66	0	54	1	8	0	4	1
Taraba	54	0	11	0	0	0	43	5
Cross River	40	3	9	6	3	2	28	0
Kogi	5	0	3	0	2	0	0	23
<b>Total</b>	<b>40,532</b>	<b>555</b>	<b>17,374</b>	<b>426</b>	<b>858</b>	<b>2</b>	<b>22,300</b>	

States, including FCT, are arranged in descending order by number of total confirmed cases and then alphabetical order

## SELECTED CHARTS

Figure 2: Daily Epidemic Curve of Confirmed Cases (WK9 – WK30)

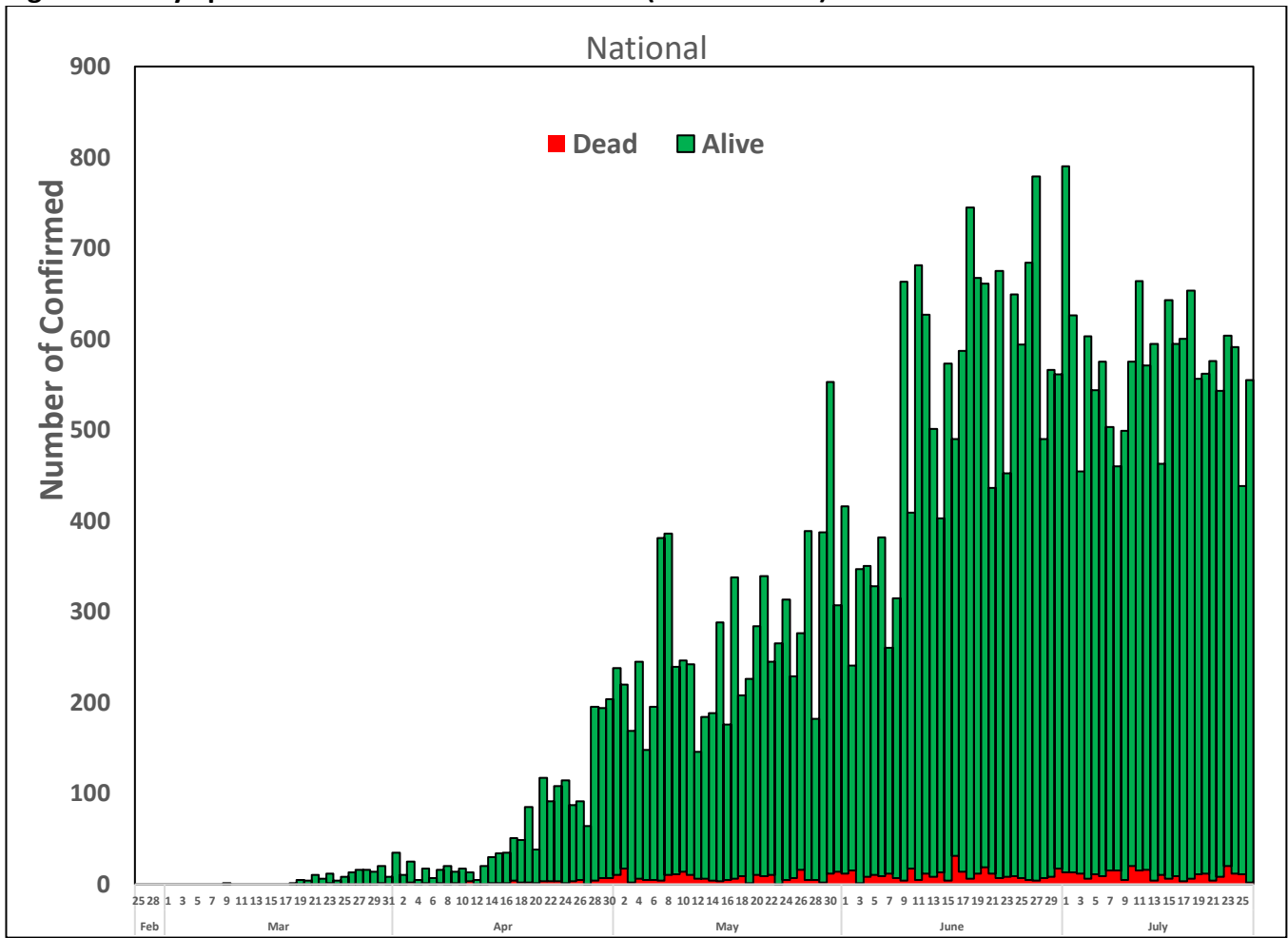
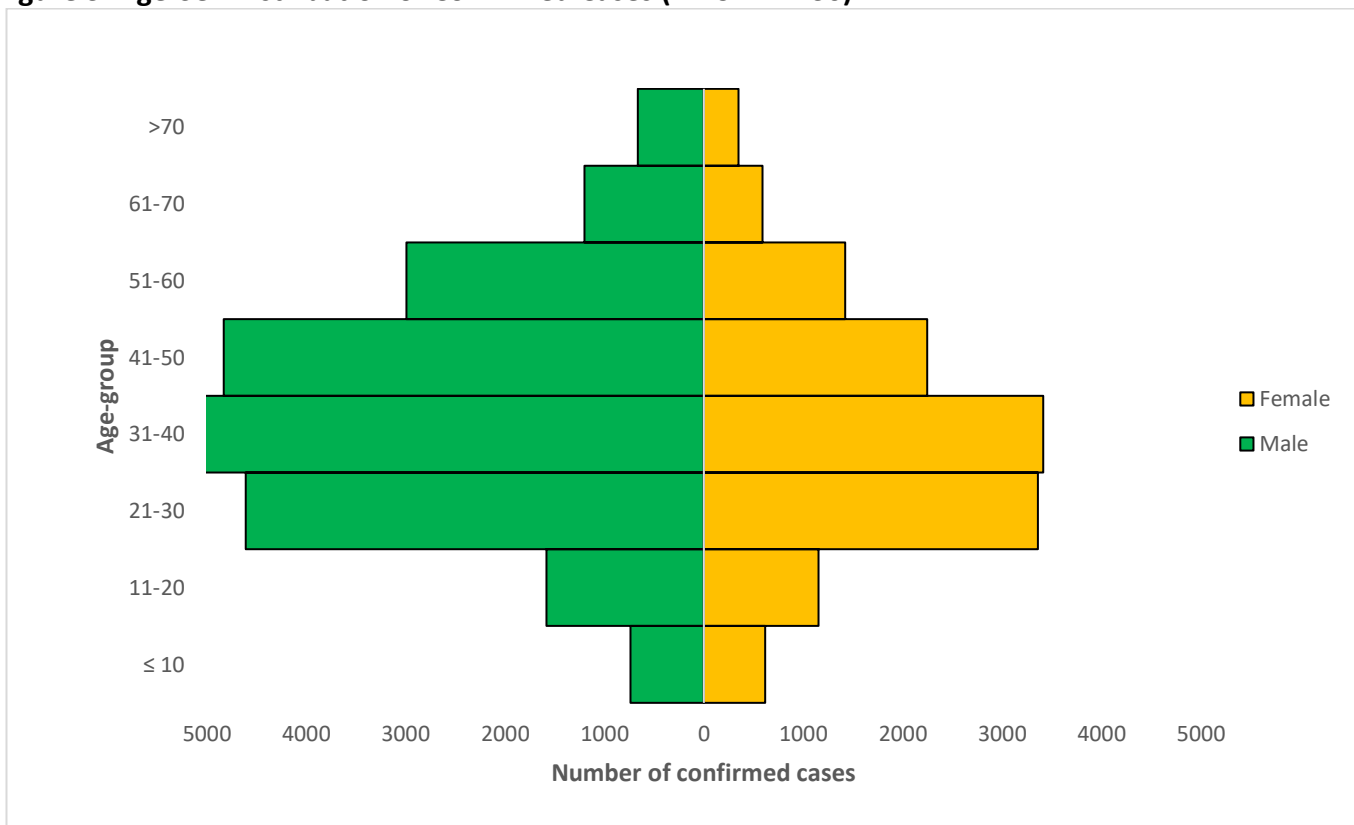


Figure 3: Age-Sex Distribution of Confirmed Cases (WK9 – WK30)



## PREPAREDNESS

Since the confirmation of the first case on 27<sup>th</sup> February 2020, the NCDC has released advisories and statements to help Nigerians and affected groups in particular to respond to the pandemic

- NCDC has launched an online course on [Infection, Prevention and Control \(IPC\) for COVID-19](#) NCDC eLearning platform
- Ahead of forthcoming elections in the country, NCDC has issued [Guidelines for Conducting Elections During the COVID-19 Outbreak in Nigeria](#).
- To protect our elders, and those with pre-existing medical conditions, NCDC has issued an [Advisory for Vulnerable Groups](#).
- NCDC has released [guidelines on the re-opening of places for worship](#).
- NCDC has released [Strategies to Improve Surveillance for COVID-19 Guidance for States](#)
- The Nigeria Police Force has released COVID-19 operational guidelines for the [Police and other Law Enforcement Agencies](#) in Nigeria
- Guidelines have been issued for the [safe transportation of remains of persons suspected or confirmed to have died of COVID-19](#)
- Information on diagnostics of the COVID-19 virus can be found in our [detailed FAQ document](#).
- To increase our testing capacity, NCDC has issued guidelines for the [integration of private labs](#).
- Guidelines for [businesses and employers](#) have been updated.
- NCDC has updated its [case definition](#) , [community case definition](#) and [case management guide](#).
- NCDC releases periodic [public health advisories](#) to Nigerians on the COVID-19 disease.
- To adhere to post-lockdown measures, NCDC has released an [advisory on the use of face masks](#), as well as information on the [Use of Cloth face masks](#) and [how to make your cloth face masks](#).
- NCDC has released guidelines for the [management of pregnant women and nursing mothers](#) during the pandemic.
- To address burials of loved ones who die from COVID-19, guidelines have been issued to advise on the [management of dead bodies](#).
- For health centres managing cases, the following documents have been released- a guideline for the [Rational Use of Personal Protective Equipment in the care of COVID-19 cases](#).
- As part of plans to increase the testing capacity of the country, the NCDC published a [National Strategy to Scale Up Access to Coronavirus Disease Testing in Nigeria](#) document.
- The Presidential Task Force has published policies and announcements on COVID-19 [available on the website of the Presidency](#) – including presidential addresses, task force updates and information on livelihood and economic support.

## RESPONSE

On 28<sup>th</sup> February 2020, a multi-sectoral Emergency Operations Centre (EOC) was activated at Level 3 – the highest emergency level in Nigeria –led by NCDC in close coordination with the State Public Health EOCs (PHEOC).

- **Deployed NCDC rapid response team (RRT) to support Kogi State**
- **Commenced second batch of virtual Training of Trainer (TOT) on contact tracing and active case search**
- **Produced and shared jingles on COVID-19 preventive messages with states and Federal Ministry of Information (FMOI)**
- Reviewed Standard Operating Procedure (SOP) for sample packaging and transport to enhance sample management
- Provided technical assistance and recommendations on instituting IPC structures at the new Plateau State Treatment centre
- Released an advisory on the use of dexamethasone for the management of severe and critical COVID-19 cases
- Assessed University of Calabar Teaching Hospital (UCTH) treatment centre and laboratory in Cross River State to improve Infection Prevention and Control (IPC) practices

- Deployed laboratory consumables and IPC materials to 31 laboratories in the COVID-19 laboratory network
- Ongoing distribution of configured tablets to States for supply chain data management
- Supported the training of Red Cross volunteers in 23 states
- All education materials can be found via [www.covid19.ncdc.gov.ng](http://www.covid19.ncdc.gov.ng)