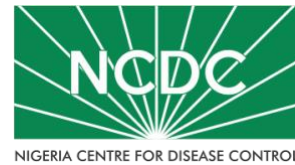


# COVID-19 SITUATION REPORT

## SITUATION REPORT 75

Wednesday, 13<sup>th</sup> May 2020



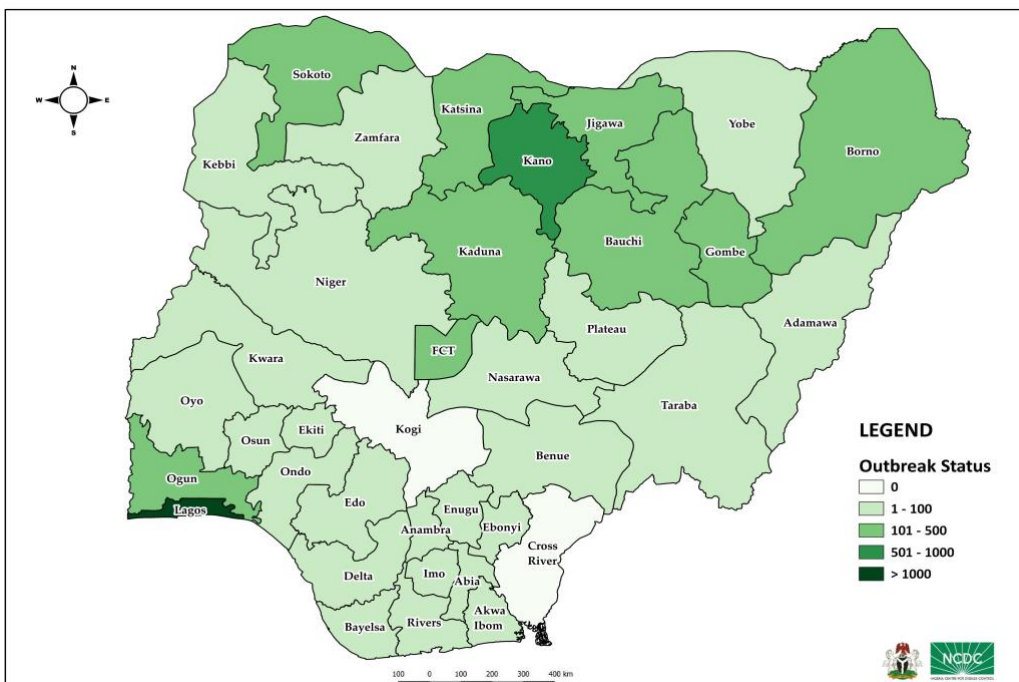
DATA AS REPORTED AND ACCURATE BY NCDC by Midnight 13<sup>th</sup> May 2020

### HIGHLIGHTS

- One hundred and eighty-four (**184**) confirmed cases were reported in the last 24 hours in **22** states – Lagos (51), Jigawa (23), Bauchi (16), Katsina (16), Kano (14), FCT (10), Rivers (10), Kwara (9), Delta (5), Kaduna (5), Oyo (4), Sokoto (4), Kebbi (3), Nasarawa (3), Osun (3), Ondo (2), Anambra (1), Ebonyi (1), Edo (1), Enugu (1), Niger (1) and Plateau (1)
- No new state recorded a confirmed COVID-19 case in the last 24 hours. The total number of states including FCT that have reported at least one confirmed case in Nigeria is still **35** (34 states + FCT).
- One hundred and eleven (**111**) cases were discharged in the last 24 hours in fourteen (**14**) states – Lagos (26), Sokoto (18), Edo (13), Gombe (12), Borno (8), FCT (7), Katsina (7), Kano (5), Kebbi (4), Delta (3), Plateau (3), Akwa Ibom (2), Bauchi (2) and Rivers (1)
- Six (**6**) deaths were recorded in the last 24 hours in three (**3**) states – Borno (4), Jigawa (1) and Katsina (1).
- Lesotho announced a confirmed case of COVID-19, a development that means the virus has now affected every African country.

### STATE OF THE NATION

Figure 1: Map of Nigeria showing 34 states and FCT affected by COVID-19



### SITUATION UPDATES

Total (New in the last 24 hours)

SAMPLES TESTED

**30657 (1249)**

CONFIRMED CASES

**4971 (184)**

AFFECTED STATES INCLUDING FCT

**35 (0)**

DISCHARGED CASES

**1070 (111)**

CONFIRMED FATALITIES

**164 (6) – 3% CFR**

DEMOGRAPHICS

MALE – 3445 (69%)

FEMALE – 1526 (31%)

MOST AFFECTED AGE GROUP

31 - 40 (25%)

TOTAL NUMBER OF PEOPLE OF INTEREST

**9362 (Total)**

**9,315 (99.5% - Exceeded Follow Up)**

PROVENANCE

TRAVEL HISTORY – **210 (4%)**

CONTACTS – **1132 (23%)**

NO EPIDEMIOLOGIC LINK – **3216 (65%)**

INCOMPLETE – **413 (8%)**

GLOBAL UPDATES

TOTAL NUMBER OF CASES

**4, 170, 424 (287, 399 deaths)**

COUNTRIES & TERRITORIES AFFECTED\*

**212**

Excluding the 2 International Conveyances

## GENERAL FACT SHEET – DATA AS AT MAY 13<sup>th</sup> 2020

Table 1: States with reported laboratory-confirmed COVID-19 cases, recoveries, deaths and days since last reported case

STATES	CONFIRMED CASES		DISCHARGED CASES		DEATHS		TOTAL ACTIVE CASES	DAYS SINCE LAST REPORTED CASE
	CUMULATIVE	NEW	CUMULATIVE	NEW	CUMULATIVE	NEW		
Lagos	2041	51	528	26	33	0	1480	0
Kano	707	14	79	5	33	0	595	0
FCT	370	10	72	7	7	0	291	0
Katsina	224	16	25	7	12	1	187	0
Bauchi	206	16	25	2	3	0	178	0
Borno	188	0	20	8	20	4	148	1
Jigawa	141	23	4	0	3	1	134	0
Ogun	127	0	46	0	5	0	76	1
Gombe	119	0	65	12	1	0	53	1
Kaduna	116	5	17	0	3	0	96	0
Sokoto	112	4	40	18	13	0	59	0
Edo	89	1	26	13	4	0	59	0
Oyo	73	4	16	0	2	0	55	0
Zamfara	73	0	1	0	5	0	67	2
Kwara	53	9	9	0	1	0	43	0
Osun	42	3	30	0	4	0	8	0
Rivers	33	10	5	1	3	0	25	0
Kebbi	31	3	5	4	3	0	23	0
Nasarawa	28	3	0	0	1	0	27	0
Delta	22	5	6	3	3	0	13	0
Adamawa	21	0	4	0	0	0	17	2
Plateau	20	1	4	3	0	0	16	0
Yobe	20	0	0	0	1	0	19	1
Ondo	18	2	11	0	1	0	6	0
Akwa Ibom	17	0	12	2	2	0	3	6
Taraba	17	0	1	0	0	0	16	3
Ekiti	15	0	9	0	1	0	5	3
Enugu	12	1	2	0	0	0	10	0
Niger	10	1	2	0	0	0	8	0
Ebonyi	9	1	0	0	0	0	9	0
Bayelsa	6	0	3	0	0	0	3	3
Benue	4	0	0	0	0	0	4	1
Imo	3	0	1	0	0	0	2	5
Abia	2	0	1	0	0	0	1	11
Anambra	2	1	1	0	0	0	1	0
<b>TOTAL</b>	<b>4971</b>	<b>184</b>	<b>1070</b>	<b>111</b>	<b>164</b>	<b>6</b>	<b>3737</b>	

States including FCT are arranged in descending order by number of total confirmed cases

## SELECTED CHARTS

Figure 2: Daily Epidemic Curve of Confirmed Cases (WK9 – WK20)

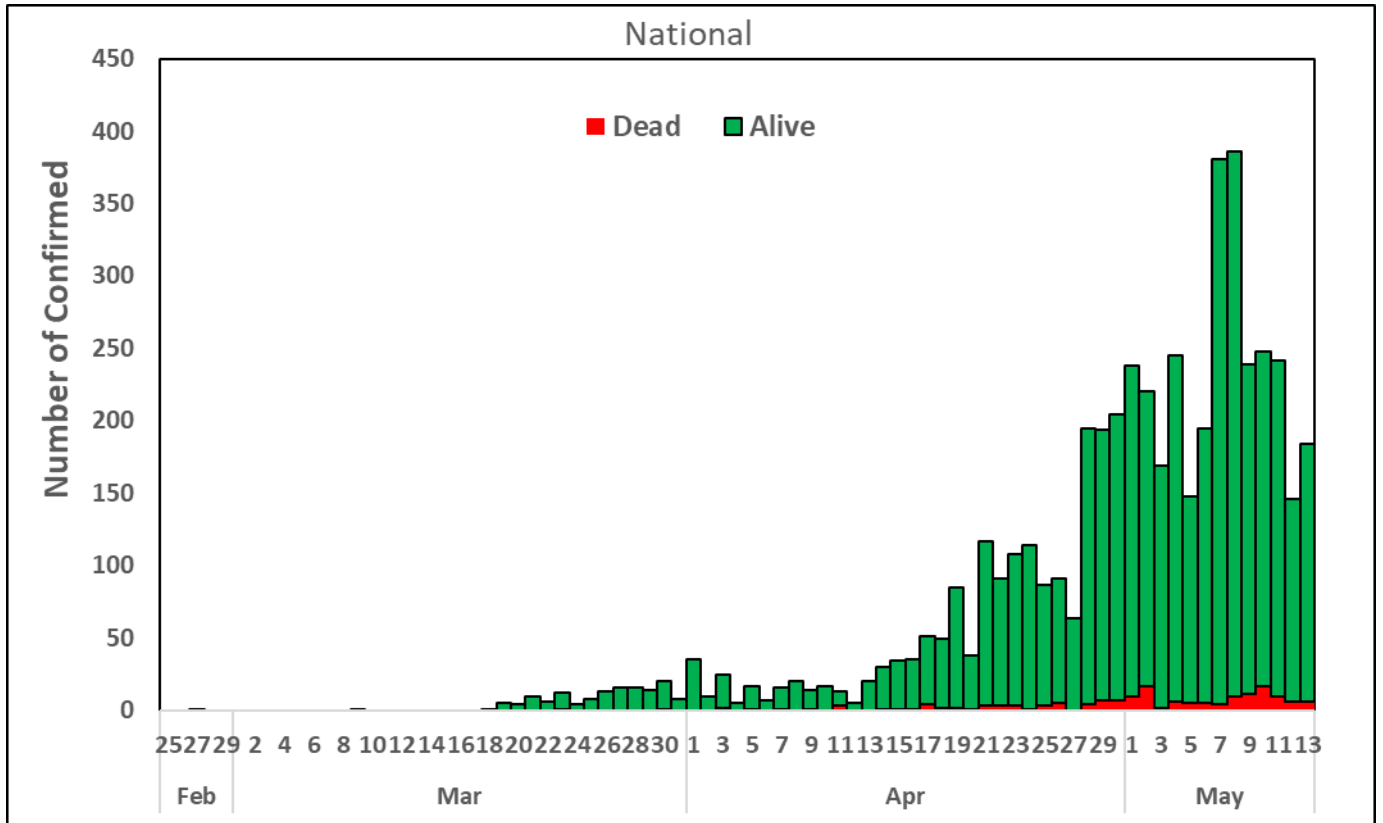
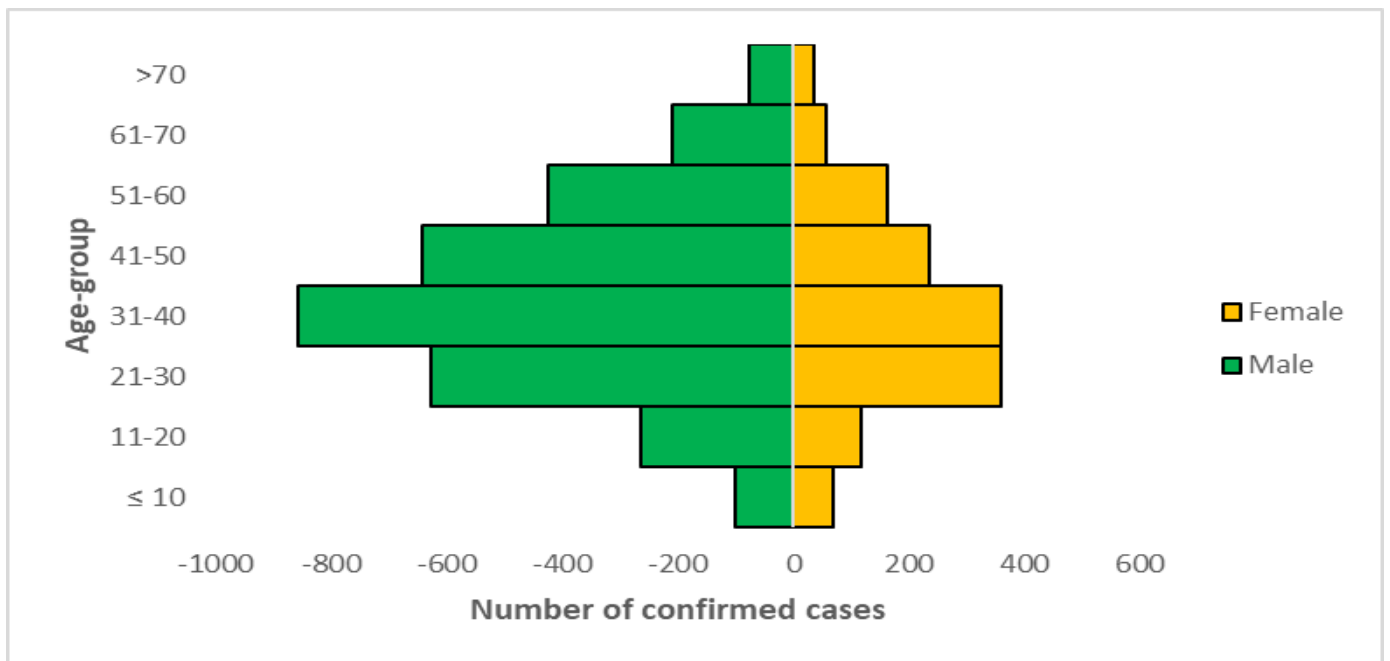


Figure 3: Age-Sex Distribution of Confirmed Cases (WK9 – WK20)



## PREPAREDNESS

Since the confirmation of the first case on 27<sup>th</sup> February 2020, the NCDC has released advisories and statements to help Nigerians and affected groups in particular respond to the pandemic

- Guidelines for [businesses and employers](#) have been updated
- NCDC has updated its [case definition](#) and [community case definition](#).
- Ahead of the Ramadan fasting period, an [Advisory for Ramadan](#) has been issued.
- NCDC releases periodic [public health advisories](#) to Nigerians on the COVID-19 disease.
- To adhere to post-lockdown measures, NCDC has released an [advisory on the use of face masks](#), as well as information on the [Use of Cloth face masks](#) and [how to make your cloth face masks](#).
- NCDC has released guidelines for the [management of pregnant women and nursing mothers](#) during the pandemic.
- To address burials of loved ones who die from COVID-19, guidelines have been issued to advise on the [management of dead bodies](#).
- NCDC has released a [Self-Isolation and Quarantine Guide](#) to help those who are exposed to COVID-19 confirmed cases or returnees to Nigeria.
- For health centres managing cases, the following documents have been released- a guideline for the [Rational Use of Personal Protective Equipment in the care of COVID-19 cases](#).
- As part of plans to increase the testing capacity of the country, the NCDC published a [National Strategy to Scale Up Access to Coronavirus Disease Testing in Nigeria](#) document.
- The Presidential Task Force has published policies and announcements on COVID-19 [available on the website of the Presidency](#) – including presidential addresses, task force updates and information on livelihood and economic support.

## RESPONSE

On 28<sup>th</sup> February 2020, a multi-sectoral Emergency Operations Centre (EOC) was activated at Level 3 – the highest emergency level in Nigeria – led by NCDC in close coordination with the State Public Health EOCs (PHEOC).

- **Conducted case management Technical Working Group teleconference with participants within and outside the country**
- **Activated database for tracking of Healthcare Workers (HCWs) infection throughout Nigeria**
- **Engaged with traditional religious leaders in Kano and Nigeria Interfaith Action Association (NIFAA) on relevant COVID-19 advisories**
- Updated self- reporting form for returnees/Persons of Interest (POIs)
- Developed SORMAS Data Quality Implementation Plan (DQIP) Monitoring & Evaluation (M&E) matrix
- Practical IPC training ongoing in University of Maiduguri Teaching Hospital, Borno and Katsina State treatment Centres
- Completed commodity distribution to various labs across the states: DNA LAB Kaduna, Ahmadu Bello University Lab Zaria, Delta Mobile Lab, African Centre of Excellence for Genomics of Infectious Diseases (ACEGID) Osun, University College Hospital (UCH) Lab Ibadan, University of Maiduguri Teaching Hospital (UMTH) Lab Borno and Usman Danfodio TH Lab Sokoto
- Conducted training for case managers on the use of Surveillance Outbreak Response Management Analysis System (SORMAS)
- Reviewed and disseminated discharge criteria for COVID-19 patients
- Developed Home care interim guideline for COVID-19 patients
- All education materials can be found via [www.covid19.ncdc.gov.ng](http://www.covid19.ncdc.gov.ng)