

COVID-19 SITUATION REPORT

SITUATION REPORT 87

Monday, 25th May 2020



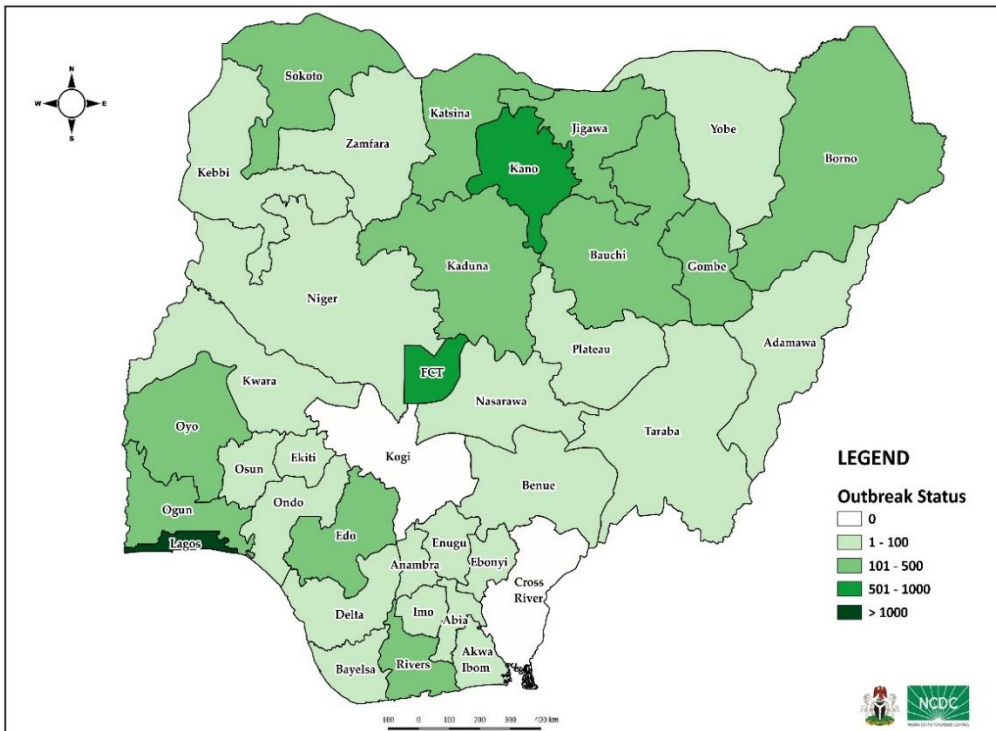
DATA AS REPORTED AND ACCURATE BY NCDC by Midnight 25th May 2020

HIGHLIGHTS

- Two hundred and twenty-nine (**229**) confirmed cases were reported in the last 24 hours in fifteen (**15**) states – Lagos (90), Katsina (27), Imo (26), Kano (23), FCT (14), Plateau (12), Ogun (9), Delta (7), Borno (5), Rivers (5), Oyo (4), Gombe (3), Osun (2), Anambra (1) and Bayelsa (1).
- No new state recorded a confirmed COVID-19 case in the last 24 hours. The total number of states including FCT that have reported at least one confirmed case in Nigeria is still **35** (34 states + FCT).
- Forty-eight (**48**) cases were discharged in the last 24 hours in twelve (**12**) states – Oyo (18), FCT (12), Niger (4), Abia (2), Enugu (2), Ogun (2), Osun (2), Rivers (2), Borno (1), Delta (1), Kano (1) and Ondo (1)
- Seven (**7**) deaths were recorded in the last 24 hours in five (**5**) states – Kano (2), Ogun (2), Plateau (1), Rivers (1) and Yobe (1)

STATE OF THE NATION

Figure 1: Map of Nigeria showing 34 states and FCT affected by COVID-19



SITUATION UPDATES

Total (New in the last 24 hours)

SAMPLES TESTED

46803 (1120)

CONFIRMED CASES

8068 (229)

AFFECTED STATES INCLUDING FCT

35 (0)

DISCHARGED CASES

2311 (48)

CONFIRMED FATALITIES

233 (7) – 3% CFR

DEMOGRAPHICS

MALE – 5472 (**68%**)

FEMALE – 2596 (**32%**)

MOST AFFECTED AGE GROUP

31 - 40 (**24%**)

PEOPLE OF INTEREST

9977 (Total)

9,872 (98.9% - Exceeded Follow Up)

PROVENANCE

TRAVEL HISTORY – 210 (**3%**)

CONTACTS – 1858 (**23%**)

NO EPIDEMIOLOGIC LINK – 4522 (**56%**)

INCOMPLETE – 1478 (**18%**)

GLOBAL UPDATES

TOTAL NUMBER OF CASES

5, 304, 772 (342, 029 deaths)

COUNTRIES & TERRITORIES AFFECTED*

213

*Excluding the 2 International Conveyances

GENERAL FACT SHEET – DATA AS AT MAY 25th 2020

Table 1: States with reported laboratory-confirmed COVID-19 cases, recoveries, deaths and days since last reported case

STATES	CONFIRMED CASES		DISCHARGED CASES		DEATHS		TOTAL ACTIVE CASES	DAYS SINCE LAST REPORTED CASE
	CUMULATIVE	NEW	CUMULATIVE	NEW	CUMULATIVE	NEW		
Lagos	3595	90	658	0	42	0	2895	0
Kano	919	23	134	1	38	2	747	0
FCT	519	14	156	12	14	0	349	0
Katsina	335	27	51	0	14	0	270	0
Borno	255	5	145	1	25	0	85	0
Oyo	244	4	76	18	4	0	164	0
Jigawa	241	0	78	0	4	0	159	3
Ogun	240	9	103	2	9	2	128	0
Bauchi	232	0	165	0	5	0	62	2
Edo	191	0	58	0	7	0	126	1
Kaduna	189	0	116	0	5	0	68	1
Gombe	148	3	118	0	3	0	27	0
Rivers	121	5	32	2	9	1	80	0
Sokoto	116	0	90	0	14	0	12	3
Plateau	95	12	27	0	2	1	66	0
Kwara	79	0	34	0	1	0	44	1
Zamfara	76	0	63	0	5	0	8	7
Yobe	47	0	8	0	7	1	32	3
Delta	46	7	14	1	7	0	25	0
Nasarawa	46	0	18	0	2	0	26	1
Osun	44	2	35	2	4	0	5	0
Ebonyi	33	0	6	0	0	0	27	1
Imo	33	26	7	0	0	0	26	0
Kebbi	32	0	17	0	4	0	11	8
Niger	28	0	9	4	1	0	18	1
Adamawa	27	0	18	0	2	0	7	4
Akwa Ibom	24	0	13	0	2	0	9	1
Ondo	23	0	19	1	1	0	3	3
Ekiti	20	0	14	0	2	0	4	5
Enugu	18	0	8	2	0	0	10	2
Taraba	18	0	10	0	0	0	8	5
Bayelsa	12	1	6	0	0	0	6	0
Anambra	10	1	1	0	0	0	9	0
Abia	7	0	3	2	0	0	4	5
Benue	5	0	1	0	0	0	4	9
TOTAL	8068	229	2311	48	233	7	5524	

States including FCT are arranged in descending order by number of total confirmed cases

SELECTED CHARTS

Figure 2: Daily Epidemic Curve of Confirmed Cases (WK9 – WK22)

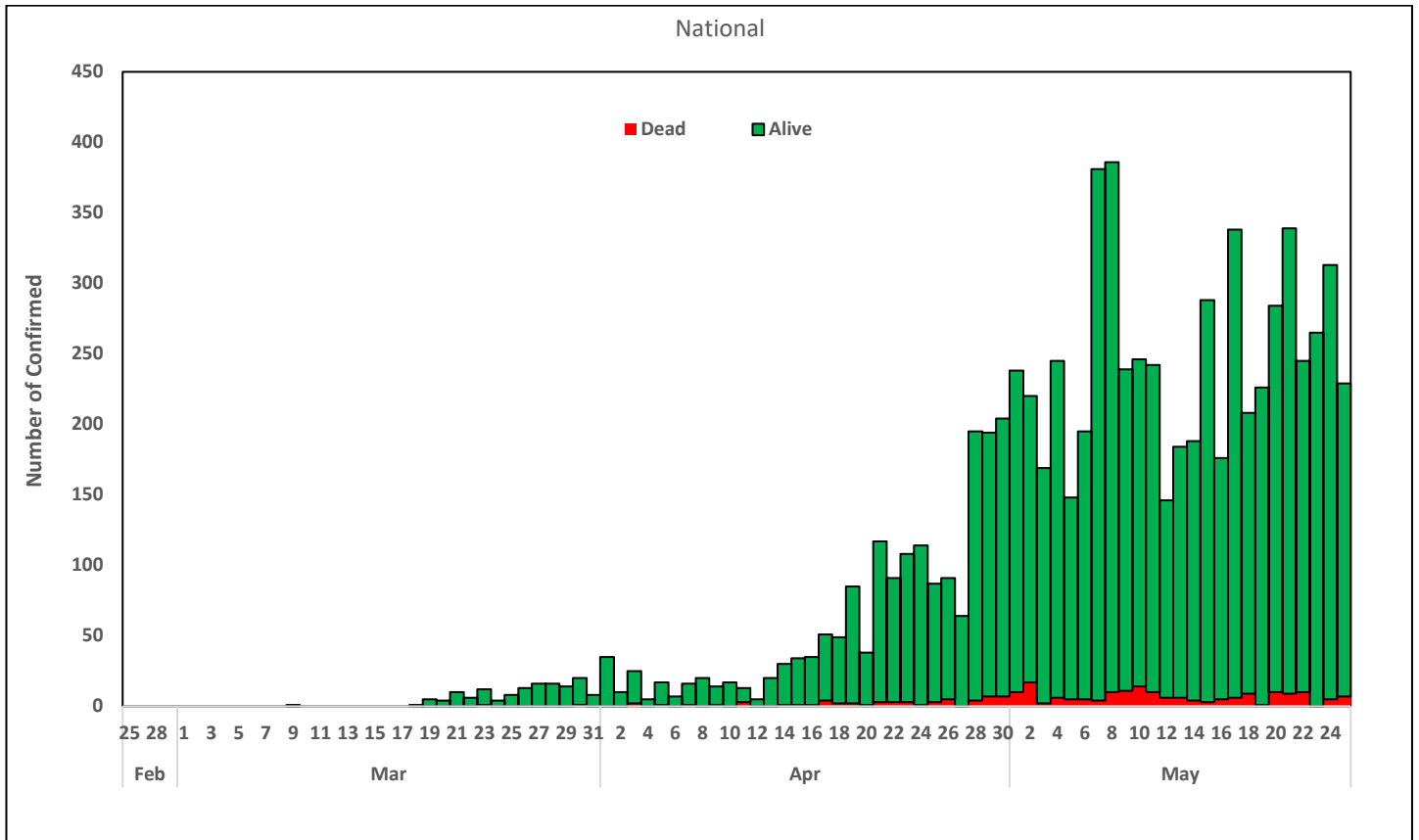
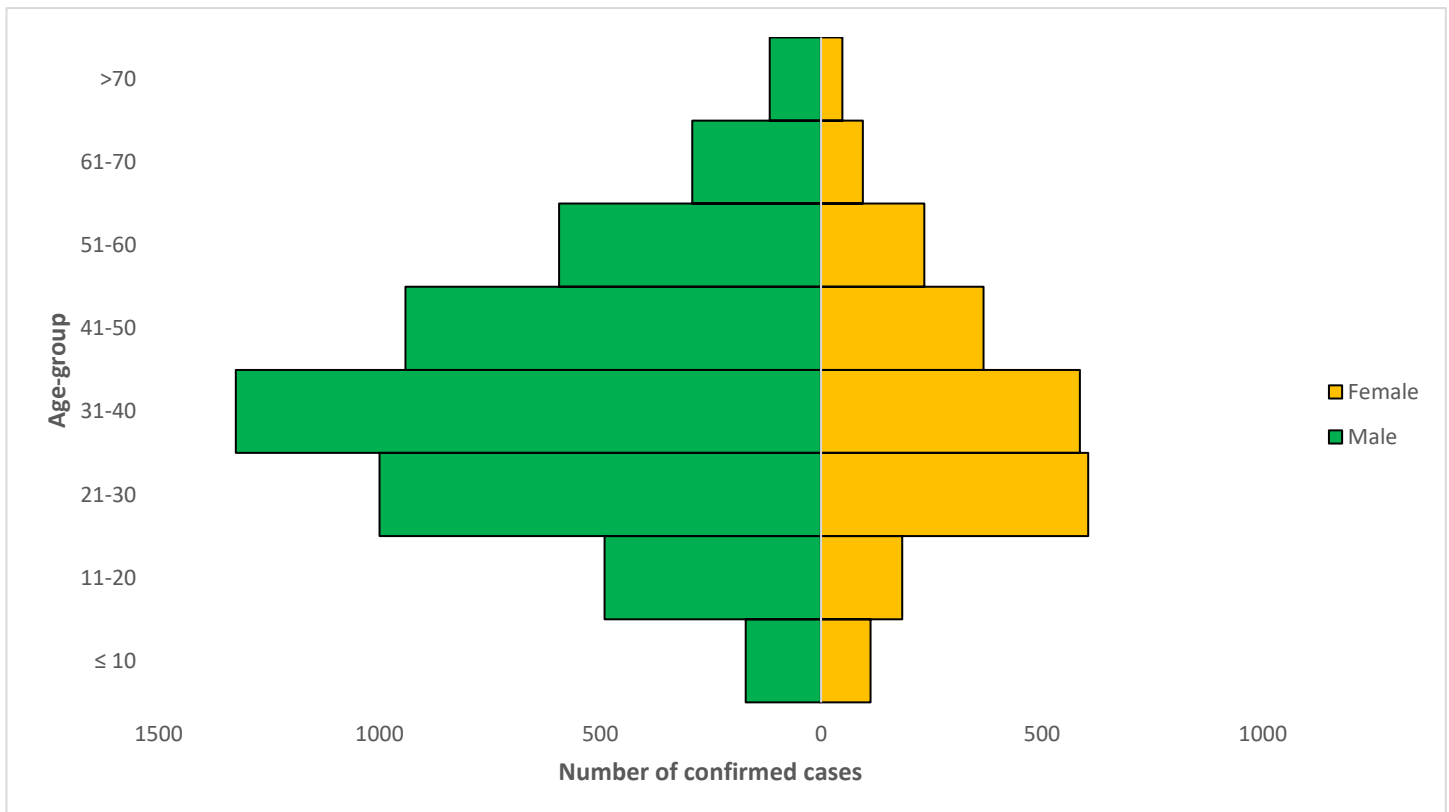


Figure 3: Age-Sex Distribution of Confirmed Cases (WK9 – WK22)



PREPAREDNESS

Since the confirmation of the first case on 27th February 2020, the NCDC has released advisories and statements to help Nigerians and affected groups in particular to respond to the pandemic

- Information on diagnostics of the COVID-19 virus can be found in our [detailed FAQ document](#)
- To increase our testing capacity, NCDC has issued guidelines for the [integration of private labs](#).
- Guidelines for [businesses and employers](#) have been updated
- NCDC has updated its [case definition](#) , [community case definition](#) and [case management guide](#).
- Ahead of the Ramadan fasting period, an [Advisory for Ramadan](#) has been issued.
- NCDC releases periodic [public health advisories](#) to Nigerians on the COVID-19 disease.
- To adhere to post-lockdown measures, NCDC has released an [advisory on the use of face masks](#), as well as information on the [Use of Cloth face masks](#) and [how to make your cloth face masks](#).
- NCDC has released guidelines for the [management of pregnant women and nursing mothers](#) during the pandemic.
- To address burials of loved ones who die from COVID-19, guidelines have been issued to advise on the [management of dead bodies](#).
- NCDC has released a [Self-Isolation and Quarantine Guide](#) and [Mandatory institutional guideline for returnees to Nigeria](#) to help those who are exposed to COVID-19 confirmed cases or returnees to Nigeria.
- For health centres managing cases, the following documents have been released- a guideline for the [Rational Use of Personal Protective Equipment in the care of COVID-19 cases](#).
- As part of plans to increase the testing capacity of the country, the NCDC published a [National Strategy to Scale Up Access to Coronavirus Disease Testing in Nigeria](#) document.
- The Presidential Task Force has published policies and announcements on COVID-19 [available on the website of the Presidency](#) – including presidential addresses, task force updates and information on livelihood and economic support.

RESPONSE

On 28th February 2020, a multi-sectoral Emergency Operations Centre (EOC) was activated at Level 3 – the highest emergency level in Nigeria –led by NCDC in close coordination with the State Public Health EOCs (PHEOC).

- **Infection Prevention and Control (IPC) training for safe burial team and ambulance drivers in Borno state**
- **Ongoing support supervision of isolation centres and treatment centres in FCT, Edo, Jigawa, Lagos and Osun state**
- **139 Persons of Interest/returnees received in Lagos**
- Trained Military Healthcare Workers (HCWs) in Benue on IPC
- Ongoing training of staff of new designated Isolation centres on IPC in Abuja
- Ongoing intensive data gathering on patient’s management in all states
- Deployment of COVID-19 response materials and commodities to Federal Medical Centre (FMC) Owerri
- Placement of 200 evacuees’ parks in Nnamdi Azikiwe International Airport Abuja (NAIA)
- Assessed the Armed Forces Isolation centre in Kano
- Engaged with traditional and religious leaders from 15 northern states
- Engaged with additional Ministries, Departments and Agencies (MDAs) to strategically expand the risk communications pillar stakeholders` base
- All education materials can be found via www.covid19.ncdc.gov.ng