

COVID-19 SITUATION REPORT

SITUATION REPORT 94

Monday, 1st June 2020



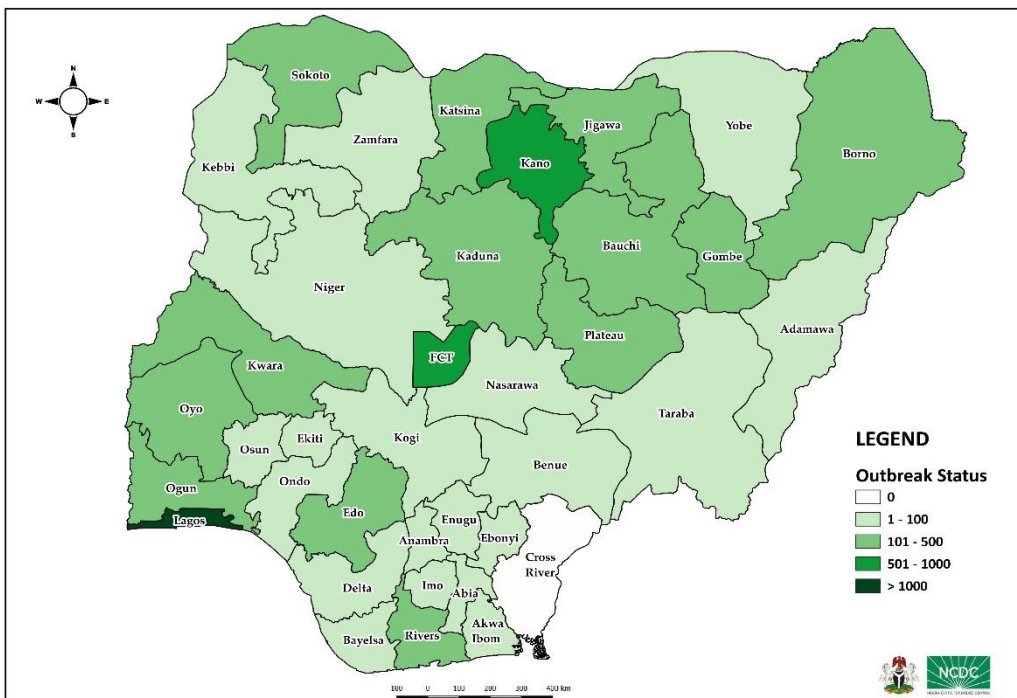
DATA AS REPORTED AND ACCURATE BY NCDC by Midnight 1st June 2020

HIGHLIGHTS

- Four hundred and sixteen (**416**) confirmed cases were reported in the last 24 hours in twenty (**20**) states – Lagos (192), Edo (41), Rivers (33), Kaduna (30), Kwara (23), Nasarawa (18), Borno (17), FCT (14), Oyo (10), Katsina (7), Abia (5), Delta (5), Adamawa (4), Kano (4), Imo (3), Ondo (3), Bauchi (2), Benue (2), Ogun (2) and Niger (1)
- No new state recorded a confirmed COVID-19 case in the last 24 hours. The total number of states including FCT that have reported at least one confirmed case in Nigeria is still **36** (35 states + FCT).
- One hundred and fifteen (**115**) cases were discharged in the last 24 hours in fourteen (**14**) states – Katsina (31), FCT (18), Plateau (16), Kaduna (13), Ogun (11), Rivers (9), Adamawa (7), Abia (4), Bauchi (1), Bayelsa (1), Borno (1), Nasarawa (1), Ondo (1) and Oyo (1)
- Twelve (**12**) deaths were recorded in the last 24 hours in seven (**7**) states – Katsina (5), Ondo (2), Bayelsa (1), FCT (1), Lagos (1), Nasarawa (1) and Oyo (1)
- The number of cases worldwide is now over 6 million

STATE OF THE NATION

Figure 1: Map of Nigeria showing 35 states and FCT affected by COVID-19



SITUATION UPDATES

Total (New in the last 24 hours)

SAMPLES TESTED

65885 (2003)

CONFIRMED CASES

10578 (416)

AFFECTED STATES INCLUDING FCT

36 (0)

DISCHARGED CASES

3122 (115)

CONFIRMED FATALITIES

299 (12) – 3% CFR

DEMOGRAPHICS

MALE – 7133 (67%)

FEMALE – 3445 (33%)

MOST AFFECTED AGE GROUP

31 - 40 (24%)

PERSONS OF INTEREST

10023 (Total)

10013 (99.9% - Exceeded Follow Up)

PROVENANCE

TRAVEL HISTORY – 275 (2%)

CONTACTS – 2391 (23%)

UNKNOWN EXPOSURE – 7912 (75%)

GLOBAL UPDATES

TOTAL NUMBER OF CASES

6,057,853 (371,166 deaths)

COUNTRIES & TERRITORIES AFFECTED*

213

*Excluding the 2 International Conveyances

GENERAL FACT SHEET – DATA AS AT MAY 1st June 2020

Table 1: States with reported laboratory-confirmed COVID-19 cases, recoveries, deaths and days since last reported case

STATES	CONFIRMED CASES		DISCHARGED CASES		DEATHS		TOTAL ACTIVE CASES	DAYS SINCE LAST REPORTED CASE
	CUMULATIVE	NEW	CUMULATIVE	NEW	CUMULATIVE	NEW		
Lagos	5135	192	825	0	55	1	4255	0
Kano	958	4	240	0	45	0	673	0
FCT	674	14	200	18	20	1	454	0
Katsina	371	7	99	31	19	5	253	0
Edo	325	41	69	0	13	0	243	0
Oyo	302	10	98	1	7	1	197	0
Borno	288	17	168	1	26	0	94	0
Kaduna	288	30	170	13	8	0	110	0
Ogun	280	2	160	11	9	0	111	0
Jigawa	270	0	135	0	5	0	130	3
Bauchi	240	2	221	1	8	0	11	0
Rivers	239	33	68	9	14	0	157	0
Gombe	161	0	122	0	6	0	33	1
Sokoto	116	0	96	0	14	0	6	10
Kwara	111	23	37	0	1	0	73	0
Plateau	105	0	69	16	2	0	34	1
Delta	88	5	17	0	8	0	63	0
Nasarawa	80	18	19	1	3	1	58	0
Zamfara	76	0	71	0	5	0	0	14
Yobe	52	0	24	0	7	0	21	3
Akwa Ibom	45	0	14	0	2	0	29	4
Osun	45	0	35	0	4	0	6	7
Adamawa	42	4	27	7	4	0	11	0
Ebonyi	40	0	8	0	0	0	32	4
Imo	39	3	14	0	0	0	25	0
Kebbi	33	0	29	0	4	0	0	4
Niger	33	1	9	0	1	0	23	0
Ondo	28	3	21	1	4	2	3	0
Bayelsa	21	0	8	1	2	1	11	1
Ekiti	20	0	16	0	2	0	2	12
Enugu	18	0	12	0	0	0	6	9
Taraba	18	0	10	0	0	0	8	12
Abia	15	5	7	4	0	0	8	0
Anambra	11	0	3	0	1	0	7	5
Benue	9	2	1	0	0	0	8	0
Kogi	2	0	0	0	0	0	2	5
TOTAL	10578	416	3122	115	299	12	7157	

States including FCT are arranged in descending order by number of total confirmed cases

SELECTED CHARTS

Figure 2: Daily Epidemic Curve of Confirmed Cases (WK9 – WK23)

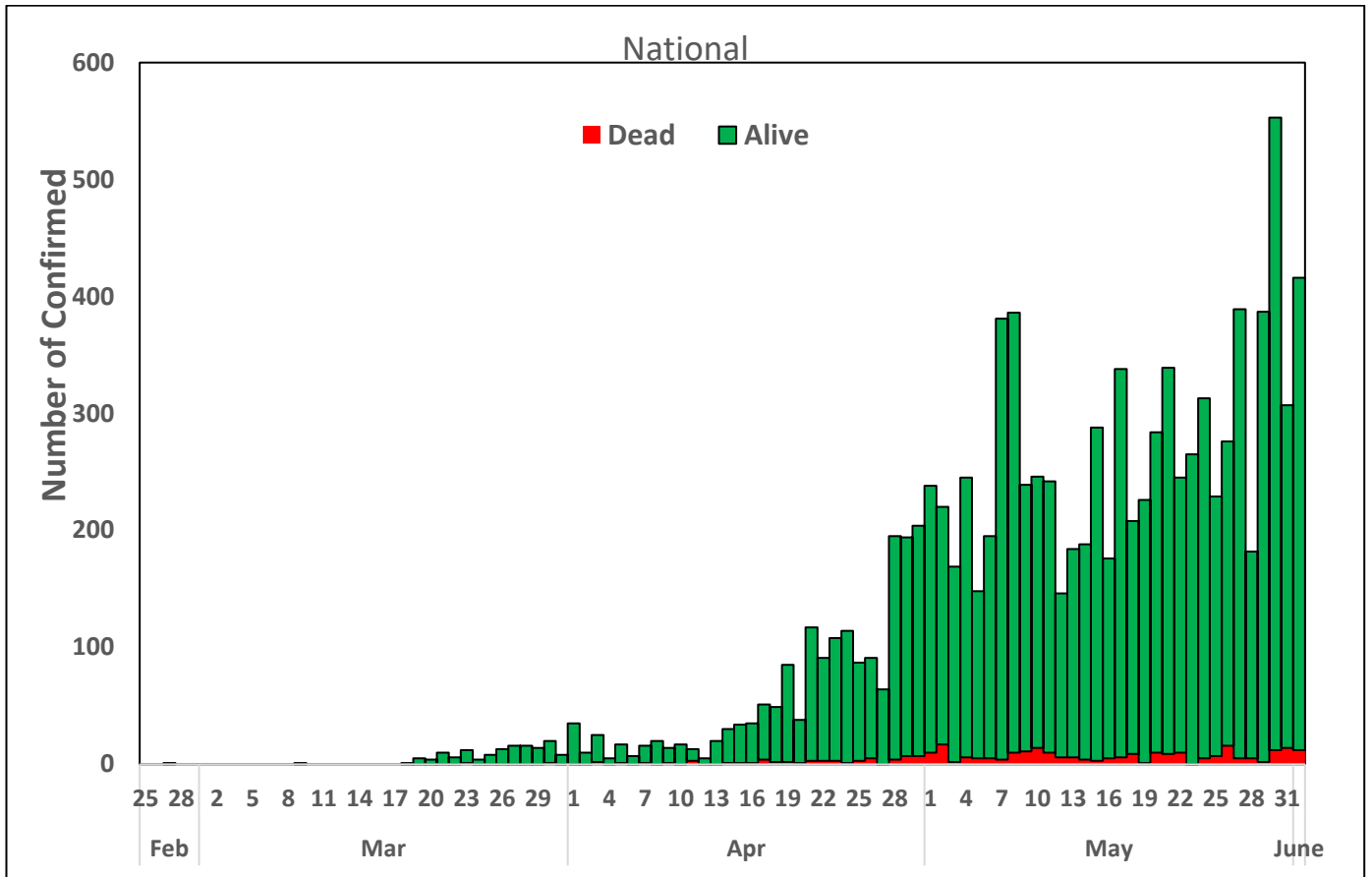
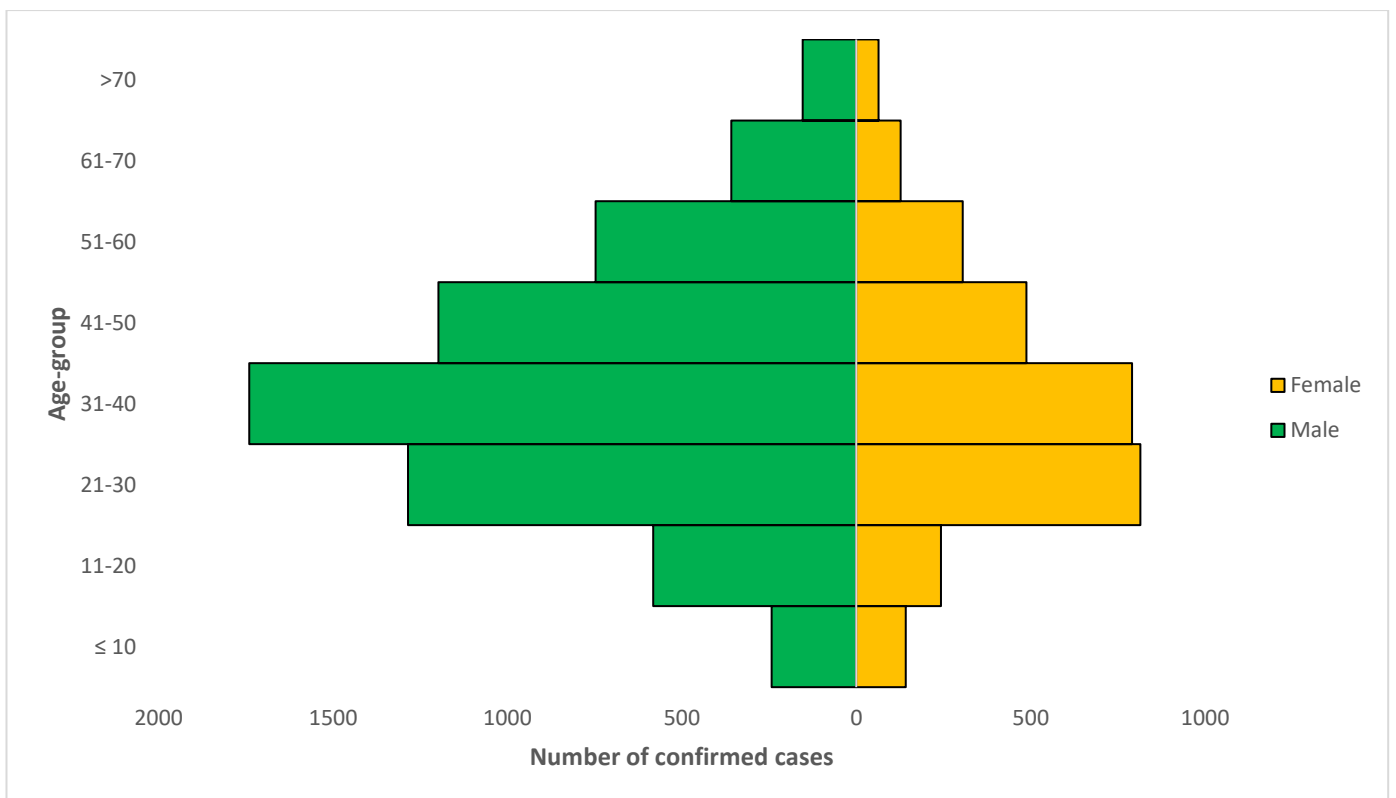


Figure 3: Age-Sex Distribution of Confirmed Cases (WK9 – WK23)



PREPAREDNESS

Since the confirmation of the first case on 27th February 2020, the NCDC has released advisories and statements to help Nigerians and affected groups in particular to respond to the pandemic

- Information on diagnostics of the COVID-19 virus can be found in our [detailed FAQ document](#)
- To increase our testing capacity, NCDC has issued guidelines for the [integration of private labs](#).
- Guidelines for [businesses and employers](#) have been updated
- NCDC has updated its [case definition](#) , [community case definition](#) and [case management guide](#).
- Ahead of the Ramadan fasting period, an [Advisory for Ramadan](#) has been issued.
- NCDC releases periodic [public health advisories](#) to Nigerians on the COVID-19 disease.
- To adhere to post-lockdown measures, NCDC has released an [advisory on the use of face masks](#), as well as information on the [Use of Cloth face masks](#) and [how to make your cloth face masks](#).
- NCDC has released guidelines for the [management of pregnant women and nursing mothers](#) during the pandemic.
- To address burials of loved ones who die from COVID-19, guidelines have been issued to advise on the [management of dead bodies](#).
- NCDC has released a [Self-Isolation and Quarantine Guide](#) and [Mandatory institutional guideline for returnees to Nigeria](#) to help those who are exposed to COVID-19 confirmed cases or returnees to Nigeria.
- For health centres managing cases, the following documents have been released- a guideline for the [Rational Use of Personal Protective Equipment in the care of COVID-19 cases](#).
- As part of plans to increase the testing capacity of the country, the NCDC published a [National Strategy to Scale Up Access to Coronavirus Disease Testing in Nigeria](#) document.
- The Presidential Task Force has published policies and announcements on COVID-19 [available on the website of the Presidency](#) – including presidential addresses, task force updates and information on livelihood and economic support.

RESPONSE

On 28th February 2020, a multi-sectoral Emergency Operations Centre (EOC) was activated at Level 3 – the highest emergency level in Nigeria –led by NCDC in close coordination with the State Public Health EOCs (PHEOC).

- **Official visit by the Presidential Task Force (PTF) to Lagos State**
- **Trained 40 community Pharmacists and members of Civil Society Organisations on Infection Prevention and Control (IPC) in Kano State**
- **Health Care Workers in Mission hospitals were trained in Presbyterian Joint Hospital, Ebonyi State**
- **Conducted Infection Prevention and Control training of trainers for Local Government Areas (LGAs) officers in Osun State with plans to cascade training at community level**
- **Supported 36 States and FCT with Information, Education and Communication (IEC) materials**
- **Produced 150 jingles in different languages. Ongoing airing of COVID-19 jingles on radio in 16 States**
- **Deployed response materials and supplies to University of Abuja Teaching Hospital, Gwagwalada**
- Updated clinical data on the Surveillance and Outbreak Response Management and Analysis System (SORMAS) platform
- Carried out assessment and set up triage areas at General Hospital Owutu Eda, Afikpo South and Mater Misericordiae Private Hospital Ebonyi
- Conducted training on safe sample collection with participants from all 33 Local Government Areas (LGAs) to drive community testing in Oyo State.
- Sensitised Hausa communities in Ebonyi State livestock market on proper hand and respiratory hygiene
- Completed biosafety training for laboratories in Kano State
- Ongoing engagement with relevant stakeholders to harmonise COVID-19 case management data

- Safety packs distributed to over 1200 returnees from other countries and quarantined in Abuja and Lagos
- All education materials can be found via www.covid19.ncdc.gov.ng