



# SITUATION REPORT

## Nigeria Centre For Disease Control (NCDC)

NCDC.GOV.NG

PLOT 800 EBITU UKIWE STREET, JABI ABUJA, NIGERIA TOLL FREE CALL: 6232 E:info@ncdc.gov.ng

@NCDCgov

<b>TITLE:</b>	<b>UPDATE ON MPOX IN NIGERIA</b>
<b>SERIAL NUMBER:</b>	<b>35</b>
<b>EPI-WEEK:</b>	<b>51</b>
<b>DATE:</b>	<b>December 25, 2022</b>

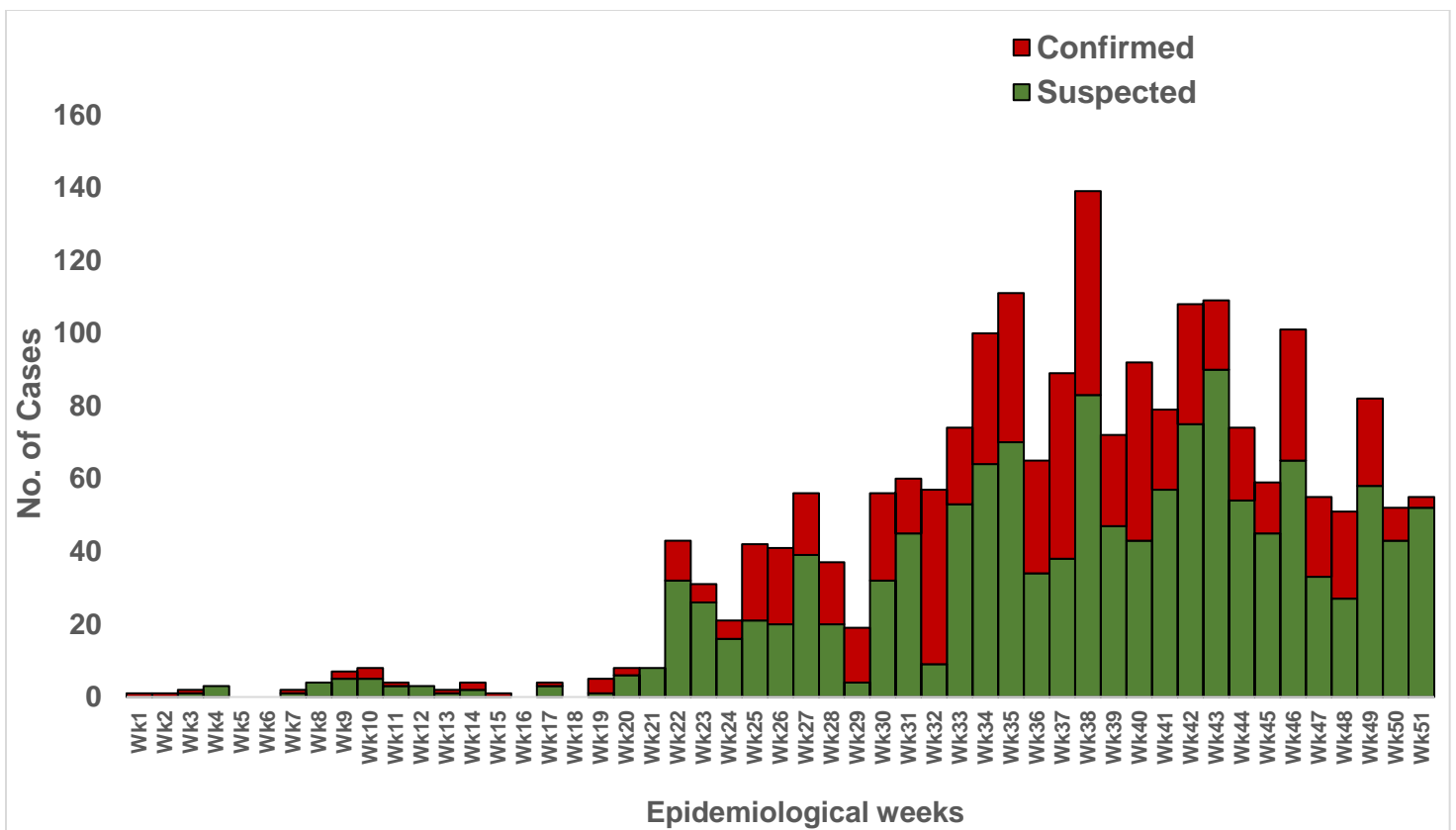
**Table 1 – Key Indicators**

Key Indicators	Number
Total confirmed cases in Epi Week 51, 2022	3
Total suspected cases from January 1 <sup>st</sup> to December 25 <sup>th</sup> , 2022 (Epi week 1 to 51)	2097
Total confirmed cases from January 1 <sup>st</sup> to December 25 <sup>th</sup> , 2022 (Epi week 1 to 51)	756
Total deaths from January 1 <sup>st</sup> to December 25 <sup>th</sup> , 2022 (Epi week 1 to 51)	7
Total deaths Sept 2017 - December 25 <sup>th</sup> , 2022	15
Total confirmed cases in 2017	88
Total confirmed cases in 2018	49
Total confirmed cases in 2019	47
Total confirmed cases in 2020	8
Total confirmed cases in 2021	34
Grand total confirmed cases (Sept 2017 – December 25 <sup>th</sup> , 2022)	982
Grand total suspected cases (Sept 2017 – December 25 <sup>th</sup> , 2022)	2606

- Fifty-five (55) new suspected cases reported in Epi week 51, 2022 (19<sup>th</sup> to 25<sup>th</sup> December 2022) from nineteen (19) states and FCT – Kaduna (12), Abia (6), Plateau (6), FCT (5), Kwara (5), Ondo (4), Lagos (3), Enugu (2), Akwa Ibom (1), Anambra (1), Delta (1), Imo (1), Katsina (1), Nasarawa (1), Ogun (1), Oyo (1), Taraba (1), Rivers (1), Yobe (1) and Zamfara (1).
- Three (3) new confirmed cases have been recorded in Epi week 51 from three (3) states – Delta (1), Imo (1), and Yobe (1).
- From 1<sup>st</sup> January till date, Nigeria has recorded 2097 suspected cases with 756 confirmed cases (497 male, 259 female) from thirty-four (34) states and FCT – Lagos (187), Abia (58), Bayelsa (45), Imo (44), Ogun (40), Ondo (37) Rivers (37), Delta (31), Edo (27), Anambra (25), FCT (23), Kwara (21), Nasarawa (17), Adamawa (16), Plateau (16), Kaduna (15), Cross River (12), Ebonyi (12), Akwa Ibom (12), Borno (11), Benue (10), Oyo (10), Katsina (8), Taraba (7), Kano (7), Gombe (6), Kogi (5), Osun (5), Enugu (4), Kebbi (2), Niger (1), Bauchi (1), Zamfara (1), Not specified (1), Ekiti (1), Yobe (1).
- Seven (7) associated deaths were recorded from 7 states in 2022 – Delta (1), Lagos (1), Ondo (1), Akwa Ibom (1), Kogi (1), Taraba (1), and Imo (1). **CFR 0.9%**



- Overall, since the re-emergence of Mpox in September 2017, **2606** suspected cases have been reported from 36 states and FCT in the country. Of these, 982 (37.7%) of 2606 have been confirmed with majority (650) male from 34 states and FCT - Lagos (217), Rivers (89), Bayelsa (88), Abia (61), Delta (60), Imo (52), Ogun (41), Ondo (37), Edo (37), FCT (29), Anambra (27), Cross-River (26), Kwara (21), Plateau (19), Akwa Ibom (19), Nasarawa (19), Adamawa (16), Oyo (16), Kaduna (15), Ebonyi (13), Benue (12), Borno (11), Katsina (8), Enugu (8), Taraba (7), Kano (7), Gombe (6), Kogi (5), Osun (5), Ekiti (3), Niger (2), Kebbi (2), Bauchi (1), Zamfara (1) and Yobe (1).
- Fifteen (15) deaths have been recorded since September 2017 (CFR= 1.5%) in nine (9) states - Lagos (3), Edo (2), Imo (2), Cross River (1), FCT (1), Rivers (1), Ondo (1) Delta (1), Akwa Ibom (1), Taraba (1) and Kogi (1).



**Figure 1:** Epidemic Curve of Suspected & Confirmed Mpox Cases Jan. 2022 till date

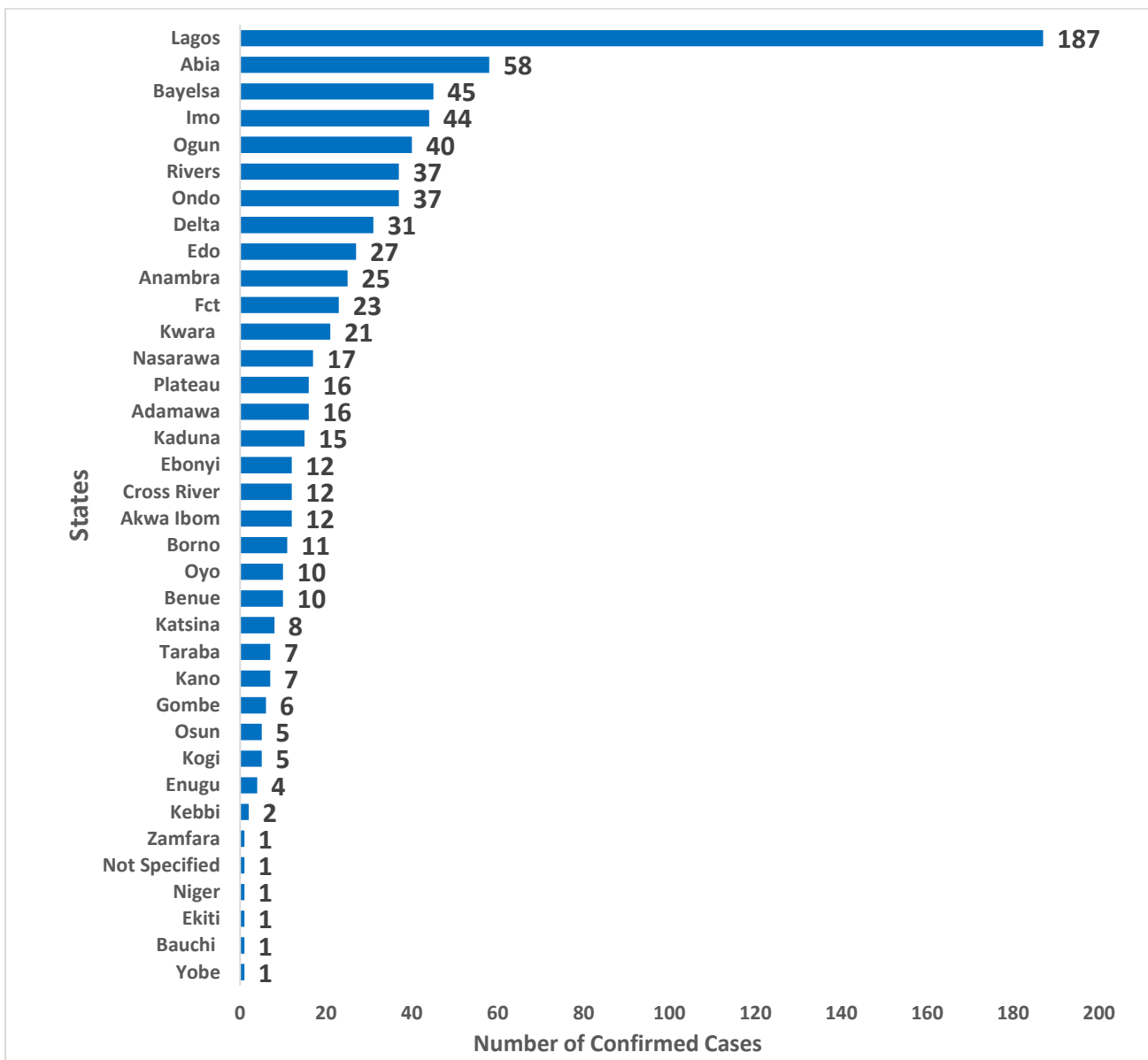


Figure 2: Bar chart showing confirmed Mpox cases by state from January 1<sup>st</sup> – 25<sup>th</sup> December 2022

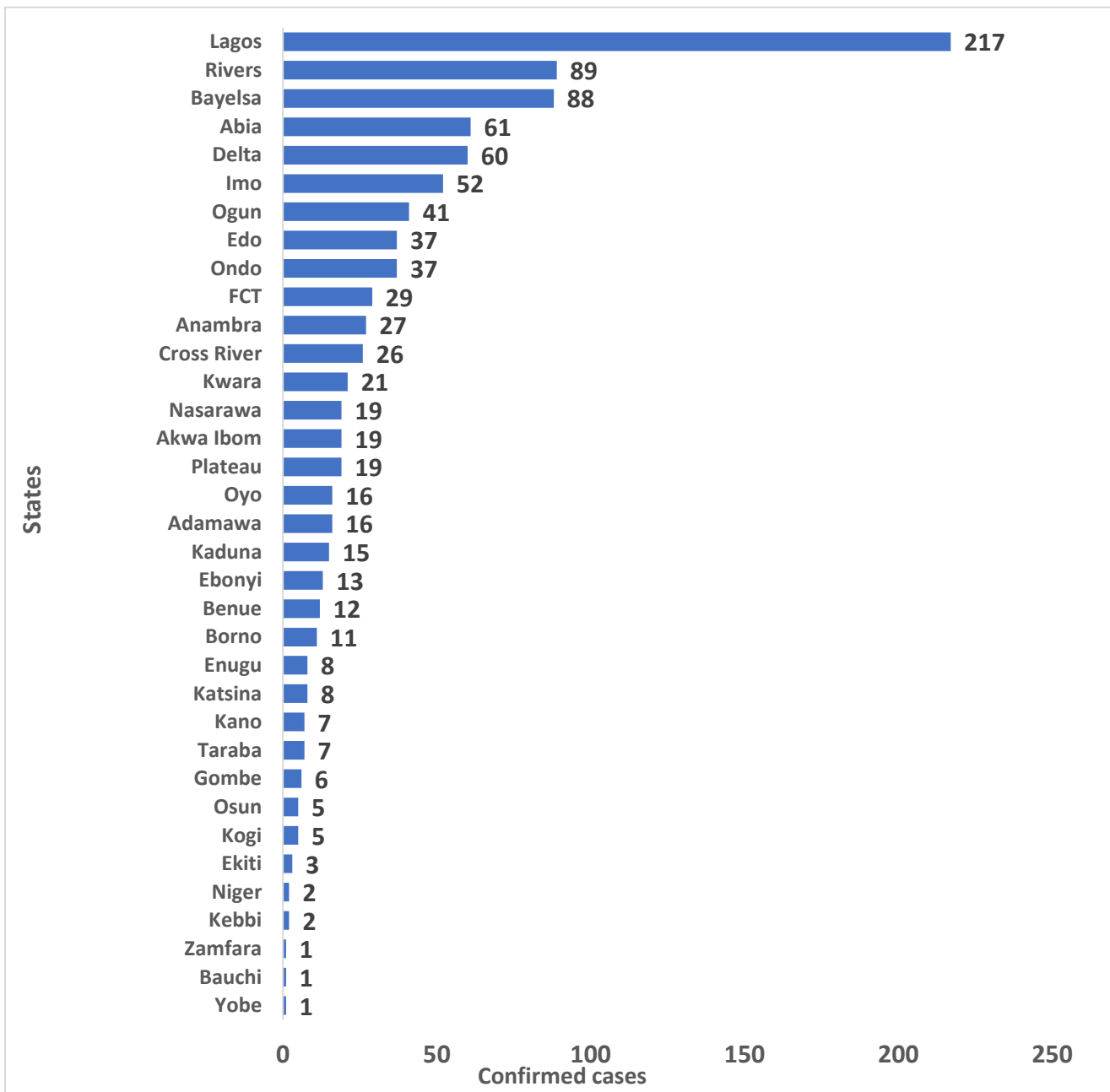
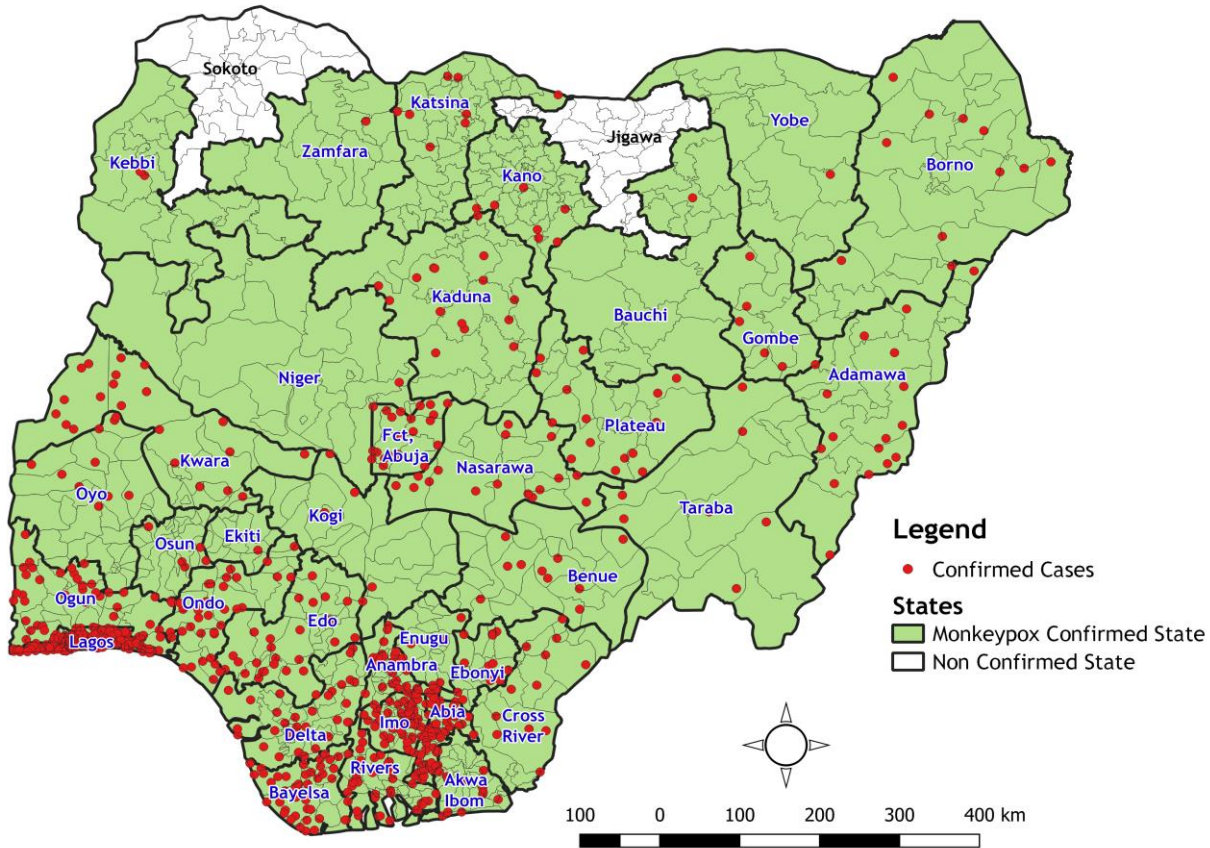


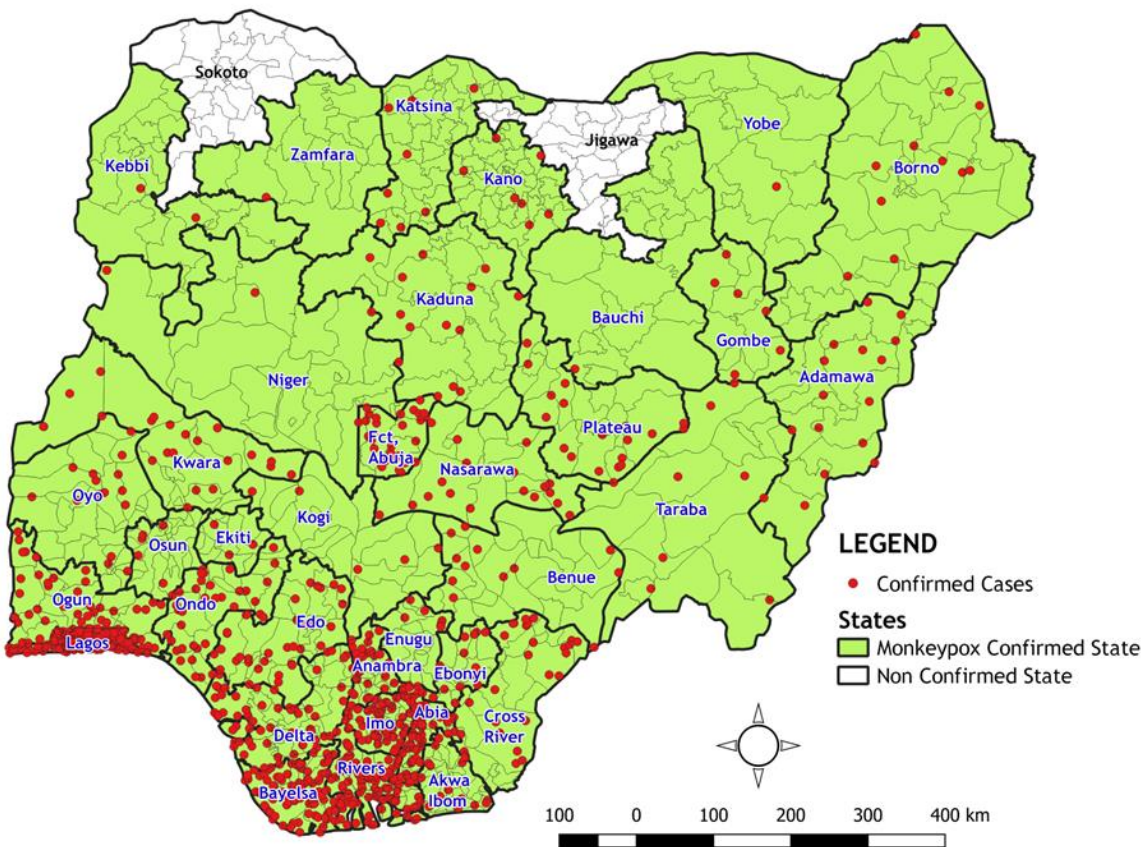
Figure 3: Bar chart showing confirmed Mpox cases by state, September 2017 – 25<sup>th</sup> December 2022

Table 2: Nigeria confirmed Mpox cases by state, September 2017 – 25<sup>th</sup> December 2022

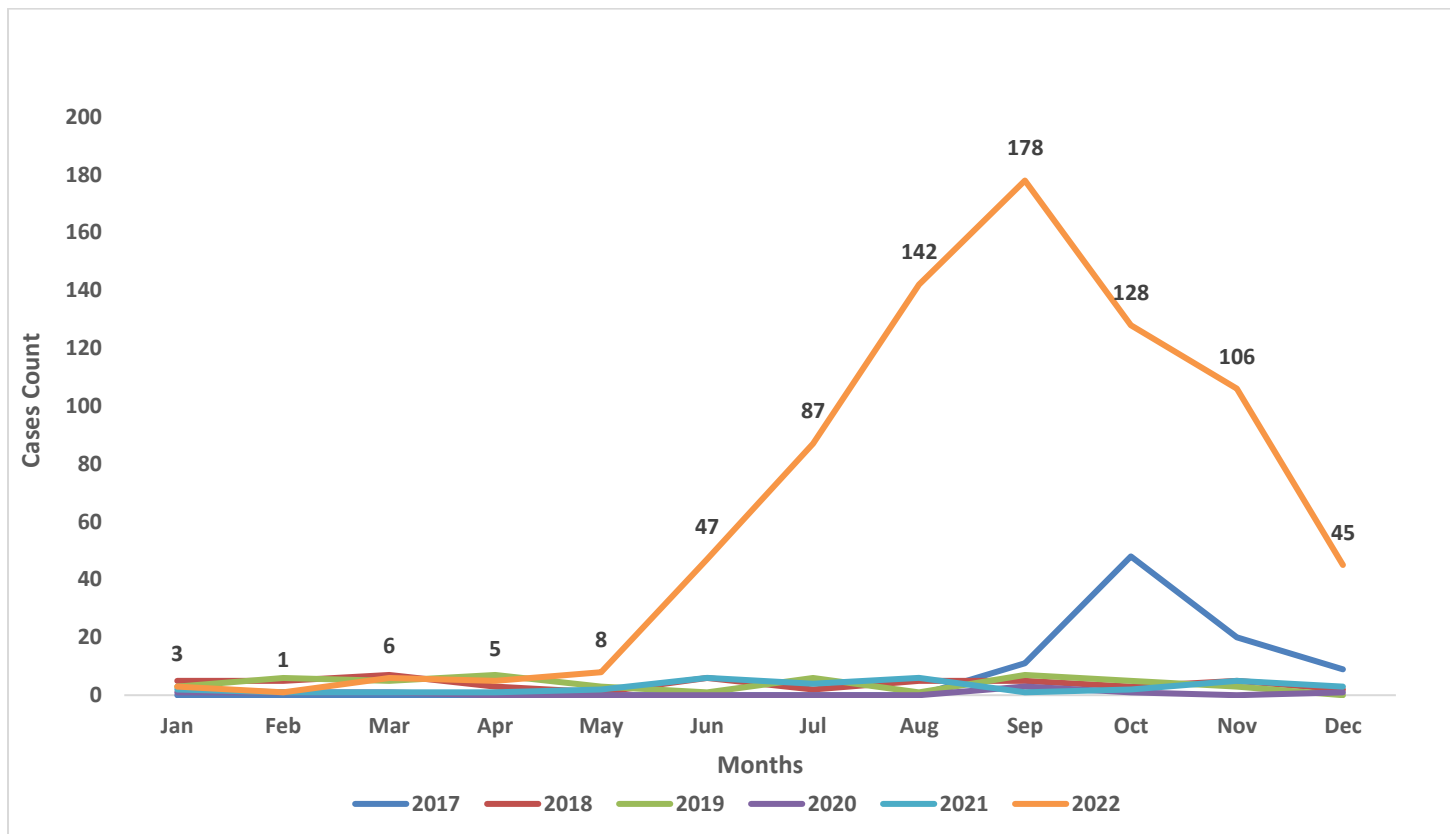
S/N	State	2017	2018	2019	2020	2021	2022	Total
1	Lagos	4	1	15	4	6	184	217
2	Rivers	25	14	7	1	5	35	89
3	Bayelsa	19	11	7	0	6	42	88
4	Abia	1	2	0	0	0	58	61
5	Delta	3	6	10	1	9	31	60
6	Imo	5	2	1	0	0	44	52
7	Ogun	0	0	0	0	1	40	41
8	Ondo	0	0	0	0	0	36	37
9	Edo	4	1	1	0	4	25	37
10	FCT	5	0	0	0	1	22	29
11	Anambra	0	1	1	0	0	25	27
12	Cross River	9	3	1	0	1	12	26
13	Kwara	0	0	1	0	0	21	21
14	Plateau	0	2	0	1	0	15	19
15	Akwa Ibom	6	0	1	0	0	11	19
16	Nasarawa	1	1	0	0	0	16	19
17	Adamawa	0	0	0	1	0	16	16
18	Oyo	1	3	2	0	0	10	16
19	Kaduna	0	0	0	0	0	15	15
20	Ebonyi	0	0	0	1	0	12	13
21	Benue	2	0	0	0	0	10	12
22	Borno	0	0	0	0	0	11	11
23	Katsina	0	0	0	0	0	8	8
24	Enugu	1	2	1	0	0	4	8
25	Taraba	0	0	0	0	0	7	7
26	Kano	0	0	0	0	0	7	7
27	Gombe	0	0	0	0	0	6	6
28	Kogi	0	0	0	0	0	5	5
29	Osun	0	0	0	0	0	5	5
30	Ekiti	2	0	0	0	0	1	3
31	Niger	0	0	0	0	1	1	2
32	Kebbi	0	0	0	0	0	2	2
33	Bauchi	0	0	0	0	0	1	1
34	Zamfara	0	0	0	0	0	1	1
35	Yobe	0	0	0	0	0	1	1
	<b>Grand Total</b>	<b>88</b>	<b>49</b>	<b>47</b>	<b>8</b>	<b>34</b>	<b>756</b>	<b>982</b>



**Figure 4:** Map of Nigeria Showing States with Confirmed Mpox Cases from January 2022 till date (34 states and FCT)



**Figure 5:** Map of Nigeria Showing States with Confirmed Mpox Cases from September 2017 till date (34 states and FCT)



**Figure 6:** Nigeria confirmed Mpox cases by the year of incidence- September 2017 to 25<sup>th</sup> December 2022

**Table 3:** Age distribution of confirmed Mpox cases September 2017 – 25<sup>th</sup> December 2022

Age Group	2017	2018	2019	2020	2021	2022	Total
0-10 Years	7	5	1	0	1	124	138
11-20 Years	12	4	1	0	4	123	144
21-30 Years	34	13	13	4	10	183	257
31- 40 Years	26	17	22	4	13	205	287
41-50 Years	9	10	9	0	5	89	122
> 50	0	0	1	0	1	32	34
<b>Total</b>	<b>88</b>	<b>49</b>	<b>47</b>	<b>8</b>	<b>34</b>	<b>756</b>	<b>982</b>

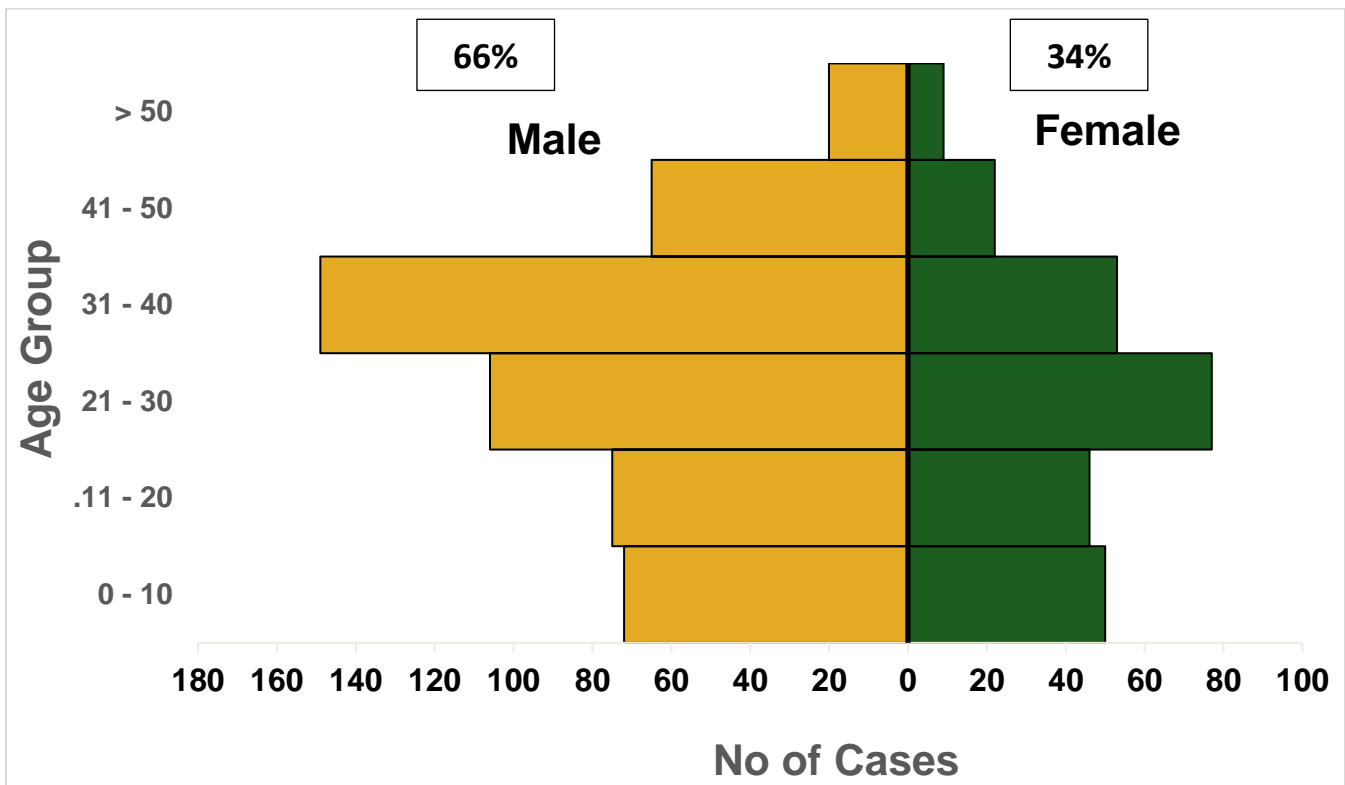


Figure 7: Age and sex distribution of Nigeria confirmed Mpox cases January 1<sup>st</sup> – 25<sup>th</sup> December 2022

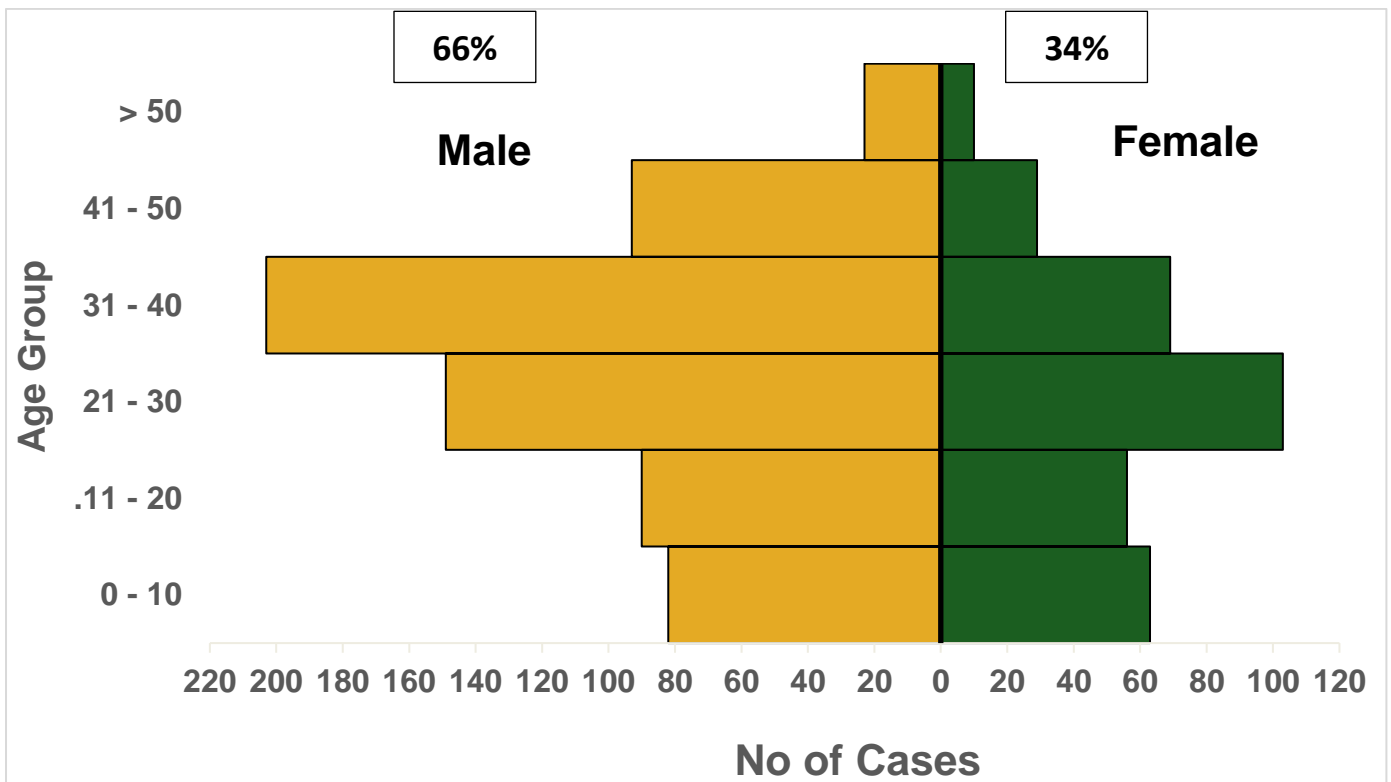


Figure 8: Age and sex distribution of Nigeria confirmed Mpox cases September 2017 – 25<sup>th</sup> December 2022



## Response activities

Pillar	Activities to date	Next steps
<b>Coordination</b>	<ul style="list-style-type: none"> <li>Supported the daily activities of the activated Emergency Operations Centre (EOC)</li> </ul>	<ul style="list-style-type: none"> <li>Coordinate ongoing response activities in the country while contributing to the global response</li> </ul>
<b>Risk communication</b>	<ul style="list-style-type: none"> <li>Tracked, monitored, and responded to rumours and misinformation of Mpox in Nigeria</li> </ul>	<ul style="list-style-type: none"> <li>Continue engagement of social media channels with key messages on Mpox prevention</li> </ul>
<b>Surveillance and case management</b>	<ul style="list-style-type: none"> <li>Provided off-site support to states on case identification through active search, reporting and response to states' surveillance teams and SSO</li> </ul>	<ul style="list-style-type: none"> <li>Ensure timely uploading of cases to the SORMAS platform</li> </ul>
<b>POE</b>	<ul style="list-style-type: none"> <li>Screened for suspected cases at points of entry for persons of Interest</li> </ul>	
<b>Laboratory</b>	<ul style="list-style-type: none"> <li>Continue off-site support to states on sample collection and management from sites to the testing lab</li> </ul>	

## Notes on this report

### **Data Source**

Information for this disease was case-based data retrieved from the National Mpox Emergency Operations Centre.

### **Case definitions**

#### *Suspected case*

- An acute illness with fever  $>38.3^{\circ}\text{C}$ , intense headache, lymphadenopathy, back pain, myalgia, and intense asthenia followed one to three days later by a progressively developing rash often beginning on the face (most dense) and then spreading elsewhere on the body, including soles of feet and palms of the hand

#### *Probable case*

- A case that meets the clinical case definition is not laboratory-confirmed but has an epidemiological link to a confirmed case

#### *Confirmed case*

- A clinically compatible case that is laboratory confirmed

#### *Contact*

- Any person who has been in direct or indirect contact with a confirmed case since the onset of symptoms, i.e., contact with skin lesions, oral secretions, urine, faeces, vomitus, blood, sexual contact, sharing a common space (anyone who has been in proximity with or without physical contact with a confirmed case)

## Calculations

- Case Fatality Rate (CFR) for this disease is reported for confirmed cases only

