

# COVID-19 SITUATION REPORT

## SITUATION REPORT 204

Saturday, 19<sup>th</sup> September 2020



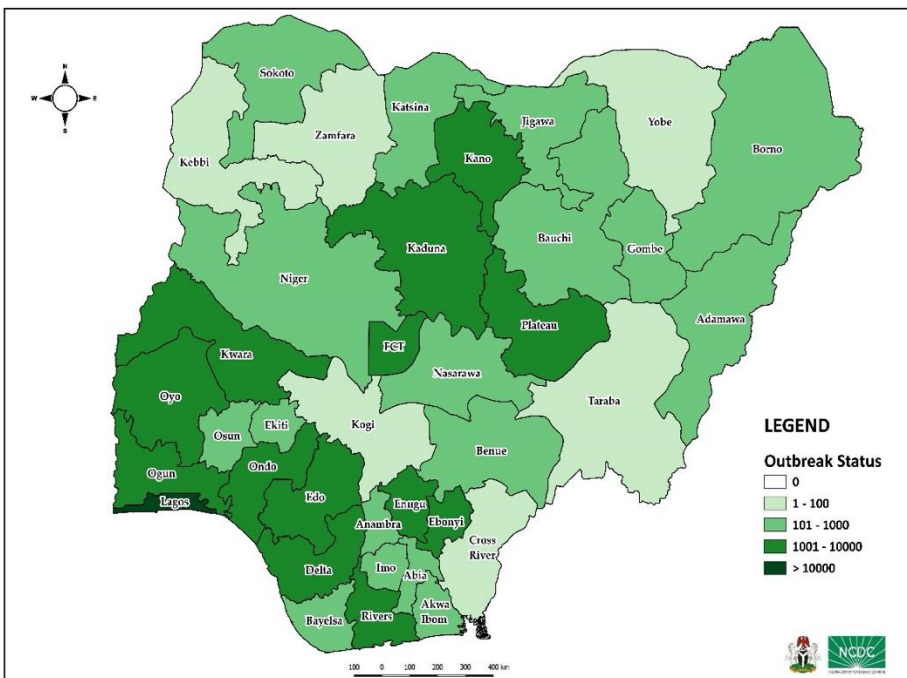
DATA AS REPORTED AND ACCURATE BY NCDC AS AT MIDNIGHT 19<sup>th</sup> SEPTEMBER 2020

### HIGHLIGHTS

- One hundred and eighty-nine (**189**) confirmed cases were reported in the last 24 hours from **15** states – Lagos (70), Plateau (37), FCT (24), Kaduna (19), Rivers (12), Oyo (5), Ogun (4), Ebonyi (3), Katsina (3), Ondo (3), Osun (3), Imo (2), Yobe (2), Ekiti (1) and Nasarawa (1).
- One hundred and twenty-six (**126**) discharges have been reported in the last 24 hours in **12** states – Abia (45), Nasarawa (27), Ondo (25), Rivers (10), Kaduna (5), Akwa Ibom (4), Ebonyi (3), FCT (3), Ekiti (1), Imo (1), Ogun (1) and Osun (1).
- **One** death was reported in the last 24 hours in **one** state – Nasarawa.
- All **36** states in Nigeria, and the FCT, have reported a confirmed case.

### STATE OF THE NATION

Figure 1: Map of Nigeria showing 36 states and FCT affected by COVID-19



### SITUATION UPDATES

Total (New in the last 24 hours)

SAMPLES TESTED

**479,628 (2,850)**

CONFIRMED CASES

**57,145 (189)**

AFFECTED STATES INCLUDING FCT

**37**

DISCHARGED CASES

**48,431 (126)**

CONFIRMED FATALITIES

**1,095 (1) – 1.9% CFR**

DEMOGRAPHICS

MALE – 36,333 (**64%**)

FEMALE – 20,812 (**36%**)

MOST AFFECTED AGE GROUP

31 - 40 (**26%**)

PERSONS OF INTEREST

**11,777 (Total)**

**11,710 (99.4% - Exceeded Follow Up)**

PROVENANCE

TRAVEL HISTORY – **850 (1%)**

CONTACTS – **15,267 (27%)**

UNKNOWN EXPOSURE – **41,028 (72%)**

GLOBAL UPDATES

TOTAL NUMBER OF CASES

**30,369,778 (948,795 deaths)**

COUNTRIES & TERRITORIES AFFECTED

**216\***

\*Excluding the 2 International Conveyance

## GENERAL FACT SHEET – DATA AS AT 19<sup>th</sup> SEPTEMBER 2020

Table 1: States with reported laboratory-confirmed COVID-19 cases, recoveries, deaths and days since last reported case

STATES	CONFIRMED CASES		DISCHARGED CASES		DEATHS		TOTAL ACTIVE CASES	DAYS SINCE LAST REPORTED CASE
	TOTAL	NEW	TOTAL	NEW	TOTAL	NEW		
Lagos	18,897	70	15,245	0	204	0	3,448	0
FCT	5,550	24	4,916	3	77	0	557	0
Oyo	3,231	5	2,202	0	39	0	990	0
Plateau	3,229	37	2,275	0	31	0	923	0
Edo	2,611	0	2,427	0	105	0	79	1
Kaduna	2,345	19	2,210	5	33	0	102	0
Rivers	2,232	12	2,140	10	59	0	33	0
Delta	1,799	0	1,638	0	49	0	112	2
Ogun	1,762	4	1,719	1	28	0	15	0
Kano	1,734	0	1,655	0	54	0	25	1
Ondo	1,597	3	1,515	25	35	0	47	0
Enugu	1,234	0	1,166	0	21	0	47	2
Ebonyi	1,038	3	1,007	3	30	0	1	0
Kwara	1,013	0	902	0	25	0	86	1
Abia	881	0	847	45	8	0	26	1
Katsina	848	3	457	0	24	0	367	0
Osun	813	3	776	1	17	0	20	0
Gombe	799	0	680	0	25	0	94	1
Borno	741	0	703	0	36	0	2	19
Bauchi	689	0	658	0	14	0	17	1
Imo	559	2	217	1	12	0	330	0
Benue	473	0	401	0	9	0	63	1
Nasarawa	448	1	325	27	13	1	110	0
Bayelsa	394	0	370	0	21	0	3	1
Jigawa	322	0	308	0	11	0	3	65
Ekiti	314	1	284	1	6	0	24	0
Akwa Ibom	288	0	268	4	8	0	12	2
Niger	250	0	232	0	12	0	6	2
Anambra	232	0	184	0	19	0	29	4
Adamawa	230	0	196	0	15	0	19	10
Sokoto	161	0	142	0	17	0	2	2
Taraba	95	0	73	0	6	0	16	8
Kebbi	93	0	84	0	8	0	1	22
Cross River	85	0	74	0	9	0	2	2
Zamfara	78	0	73	0	5	0	0	30
Yobe	75	2	59	0	8	0	8	0
Kogi	5	0	3	0	2	0	0	78
<b>Total</b>	<b>57,145</b>	<b>189</b>	<b>48,431</b>	<b>126</b>	<b>1,095</b>	<b>1</b>	<b>7,619</b>	

States, including FCT, are arranged in descending order by number of total confirmed cases and then alphabetical order

SELECTED CHARTS

Figure 2: Daily Epidemic Curve of Confirmed Cases (WK9 – WK38)

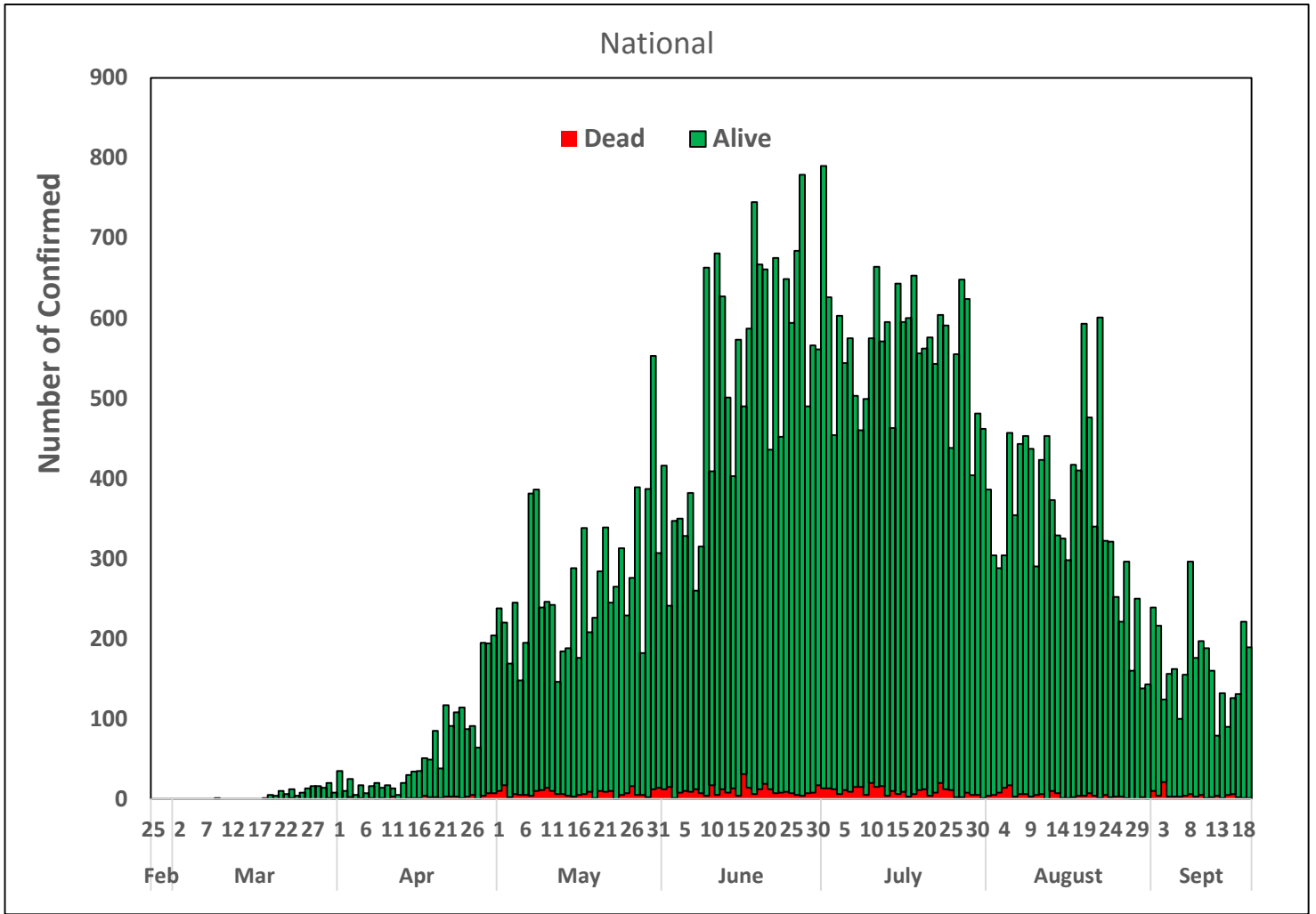
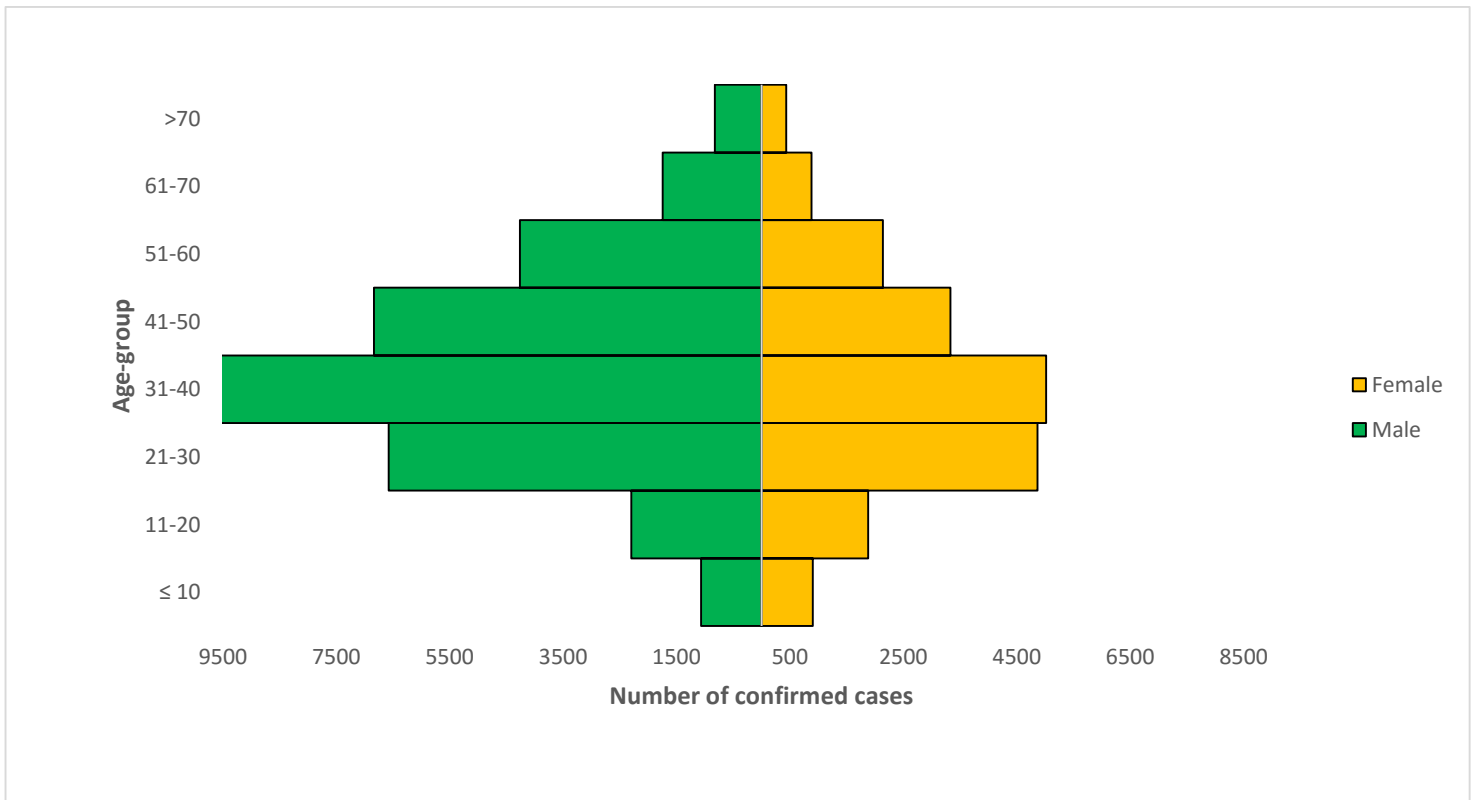


Figure 3: Age-Sex Distribution of Confirmed Cases (WK9 – WK38)



## PREPAREDNESS

Since the confirmation of the first case on 27<sup>th</sup> February 2020, the NCDC has released advisories and statements to help Nigerians and affected groups in particular to respond to the pandemic

- NCDC published second interim guidance – Infection Prevention and Control: [Recommendations during health care provision for suspected and confirmed cases of COVID-19](#)
- NCDC recently published the first edition of a quick reference guide on setting up sample collection centre - [A step by step guide on setting up a sample collection centre](#)
- NCDC has launched an online course on [Infection, Prevention and Control \(IPC\) for COVID-19](#) NCDC eLearning platform
- Ahead of forthcoming elections in the country, NCDC has issued [Guidelines for Conducting Elections During the COVID-19 Outbreak in Nigeria](#).
- To protect our elders, and those with pre-existing medical conditions, NCDC has issued an [Advisory for Vulnerable Groups](#).
- NCDC has released [guidelines on the re-opening of places for worship](#).
- NCDC has released [Strategies to Improve Surveillance for COVID-19 Guidance for States](#)
- The Nigeria Police Force has released COVID-19 operational guidelines for the [Police and other Law Enforcement Agencies in Nigeria](#)
- Guidelines have been issued for the [safe transportation of remains of persons suspected or confirmed to have died of COVID-19](#)
- Information on diagnostics of the COVID-19 virus can be found in our [detailed FAQ document](#).
- To increase our testing capacity, NCDC has issued guidelines for the [integration of private labs](#).
- Guidelines for [businesses and employers](#) have been updated.
- NCDC has updated its [case definition](#) , [community case definition](#) and [case management guide](#).
- NCDC releases periodic [public health advisories](#) to Nigerians on the COVID-19 disease.
- To adhere to post-lockdown measures, NCDC has released an [advisory on the use of face masks](#), as well as information on the [Use of Cloth face masks](#) and [how to make your cloth face masks](#).
- NCDC has released guidelines for the [management of pregnant women and nursing mothers](#) during the pandemic.
- To address burials of loved ones who die from COVID-19, guidelines have been issued to advise on the [management of dead bodies](#).
- For health centres managing cases, the following documents have been released- a guideline for the [Rational Use of Personal Protective Equipment in the care of COVID-19 cases](#).
- As part of plans to increase the testing capacity of the country, the NCDC published a [National Strategy to Scale Up Access to Coronavirus Disease Testing in Nigeria](#) document.
- The Presidential Task Force has published policies and announcements on COVID-19 [available on the website of the Presidency](#) – including presidential addresses, task force updates and information on livelihood and economic support.

## RESPONSE

On 28<sup>th</sup> February 2020, a multi-sectoral Emergency Operations Centre (EOC) was activated at Level 3 – the highest emergency level in Nigeria –led by NCDC in close coordination with the State Public Health EOCs (PHEOC).

- **Added four (4) additional laboratories to the Nigeria International Travel Portal (NITP) to test international travelers in Imo, Anambra, Edo and Kano States**
- **Trained 35 members of staff of Accident and Emergency Bureau on Infection Prevention and Control (IPC) measures in Lagos state**
- **Deployed eight (8) tonnes of IPC commodities and materials per state**
- **Developed and disseminated bi-weekly messaging priorities and key messages to stakeholders**

- Conducted the training of heads of schools on safe reopening for 70 private, 80 public participants across Local Government Areas in Lagos Mainland
- Finalised arrangement with Federal Ministry of Environment (FME) to commence the education sector stakeholders meeting in all 6 geopolitical zones
- All education materials can be found via [www.covid19.ncdc.gov.ng](http://www.covid19.ncdc.gov.ng)