

COVID-19 SITUATION REPORT

SITUATION REPORT 215

Wednesday, 30th September 2020



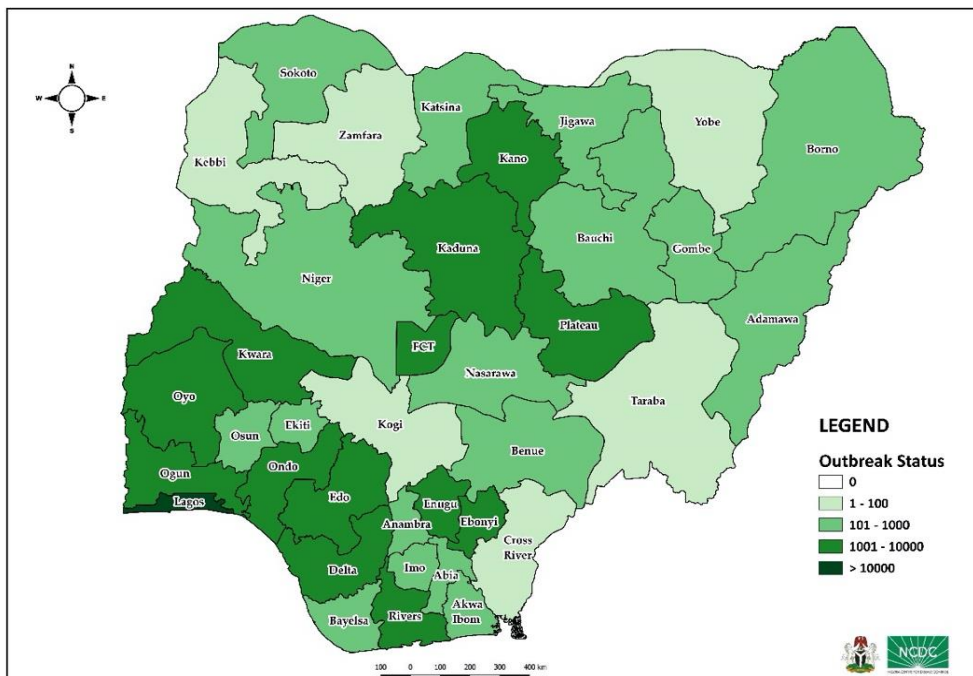
DATA AS REPORTED AND ACCURATE BY NCDC AS AT MIDNIGHT 30TH SEPTEMBER 2020

HIGHLIGHTS

- Two hundred and one (**201**) confirmed cases were reported in the last 24 hours from **13** states – Lagos (77), Rivers (37), Plateau (25), FCT (13), Kaduna (12), Ogun (12), Adamawa (8), Taraba (7), Imo (4), Kwara (2), Osun (2), Abia (1) and Oyo (1).
- Four hundred and twenty-one (**421**) discharges have been reported in the last 24 hours in **12** states – Imo (264), Delta (85), Plateau (25), Taraba (16), Adamawa (10), FCT (7), Kano (5), Kaduna (3), Rivers (3), Bayelsa (1), Osun (1) and Oyo (1).
- One** death was reported in the last 24 hours in FCT.
- All **36** states in Nigeria, and the FCT, have reported a confirmed case.

STATE OF THE NATION

Figure 1: Map of Nigeria showing 36 states and FCT affected by COVID-19



SITUATION UPDATES

Total (New in the last 24 hours)

SAMPLES TESTED

519,140 (4,410)¹

CONFIRMED CASES

58,848 (201)

AFFECTED STATES INCLUDING FCT

37

DISCHARGED CASES

50,358 (421)

CONFIRMED FATALITIES

1,112 (1) – 1.9% CFR

DEMOGRAPHICS

MALE – 37,440 (64%)

FEMALE – 21,408 (36%)

MOST AFFECTED AGE GROUP

31 - 40 (27%)

PERSONS OF INTEREST

27,594 (Total)

25,303 (91.7% - Exceeded Follow Up)

PROVENANCE

TRAVEL HISTORY – **1,001 (1.7%)**

CONTACTS – **15,527 (26.7%)**

UNKNOWN EXPOSURE – **42,320 (71.6%)**

GLOBAL UPDATES

TOTAL NUMBER OF CASES

33,502,430 (1,004,421 deaths)

COUNTRIES & TERRITORIES AFFECTED

216*

¹Includes 310 travel tests from FCT and 54 Gene lab Lagos travel data

*Excluding the 2 International Conveyance

GENERAL FACT SHEET – DATA AS AT 30TH SEPTEMBER 2020

Table 1: States with reported laboratory-confirmed COVID-19 cases, recoveries, deaths and days since last reported case

STATES	CONFIRMED CASES		DISCHARGED CASES		DEATHS		TOTAL ACTIVE CASES	DAYS SINCE LAST REPORTED CASE
	TOTAL	NEW	TOTAL	NEW	TOTAL	NEW		
Lagos	19,461	77	15,249	0	204	0	4,008	0
FCT	5,709	13	4,977	7	79	1	653	0
Plateau	3,450	25	2,597	25	33	0	820	0
Oyo	3,261	1	2,337	1	40	0	884	0
Edo	2,626	0	2,495	0	107	0	24	1
Rivers	2,432	37	2,244	3	59	0	129	0
Kaduna	2,419	12	2,324	3	39	0	56	0
Ogun	1,850	12	1,727	0	28	0	95	0
Delta	1,802	0	1,737	85*	49	0	16	4
Kano	1,737	0	1,668	5	54	0	15	5
Ondo	1,631	0	1,545	0	36	0	50	3
Enugu	1,289	0	1,166	0	21	0	102	5
Ebonyi	1,040	0	1,007	0	30	0	3	4
Kwara	1,036	2	955	0	25	0	56	0
Abia	895	1	872	0	8	0	15	0
Gombe	883	0	747	0	25	0	111	1
Katsina	861	0	835	0	24	0	2	1
Osun	839	2	790	1	17	0	32	0
Borno	745	0	705	0	36	0	4	1
Bauchi	699	0	668	0	14	0	17	2
Imo	572	4	535	264**	12	0	25	0
Benue	481	0	413	0	10	0	58	5
Nasarawa	450	0	325	0	13	0	112	1
Bayelsa	399	0	373	1	21	0	5	1
Jigawa	325	0	308	0	11	0	6	5
Ekiti	321	0	303	0	6	0	12	4
Akwa Ibom	288	0	274	0	8	0	6	13
Niger	259	0	232	0	12	0	15	8
Adamawa	248	8	208	10	17	0	23	0
Anambra	237	0	213	0	19	0	5	6
Sokoto	162	0	144	0	17	0	1	5
Taraba	102	7	89	16	6	0	7	0
Kebbi	93	0	84	0	8	0	1	33
Cross River	87	0	74	0	9	0	4	6
Zamfara	78	0	73	0	5	0	0	41
Yobe	76	0	62	0	8	0	6	4
Kogi	5	0	3	0	2	0	0	89
Total	58,848	201	50,358	421	1,112	1	7,378	

States, including FCT, are arranged in descending order by number of total confirmed cases and then alphabetical order

notes

* 85 home care discharges in Delta

** includes 257 community recoveries in Imo

SELECTED CHARTS

Figure 2: Daily Epidemic Curve of Confirmed Cases (WK9 – WK40)

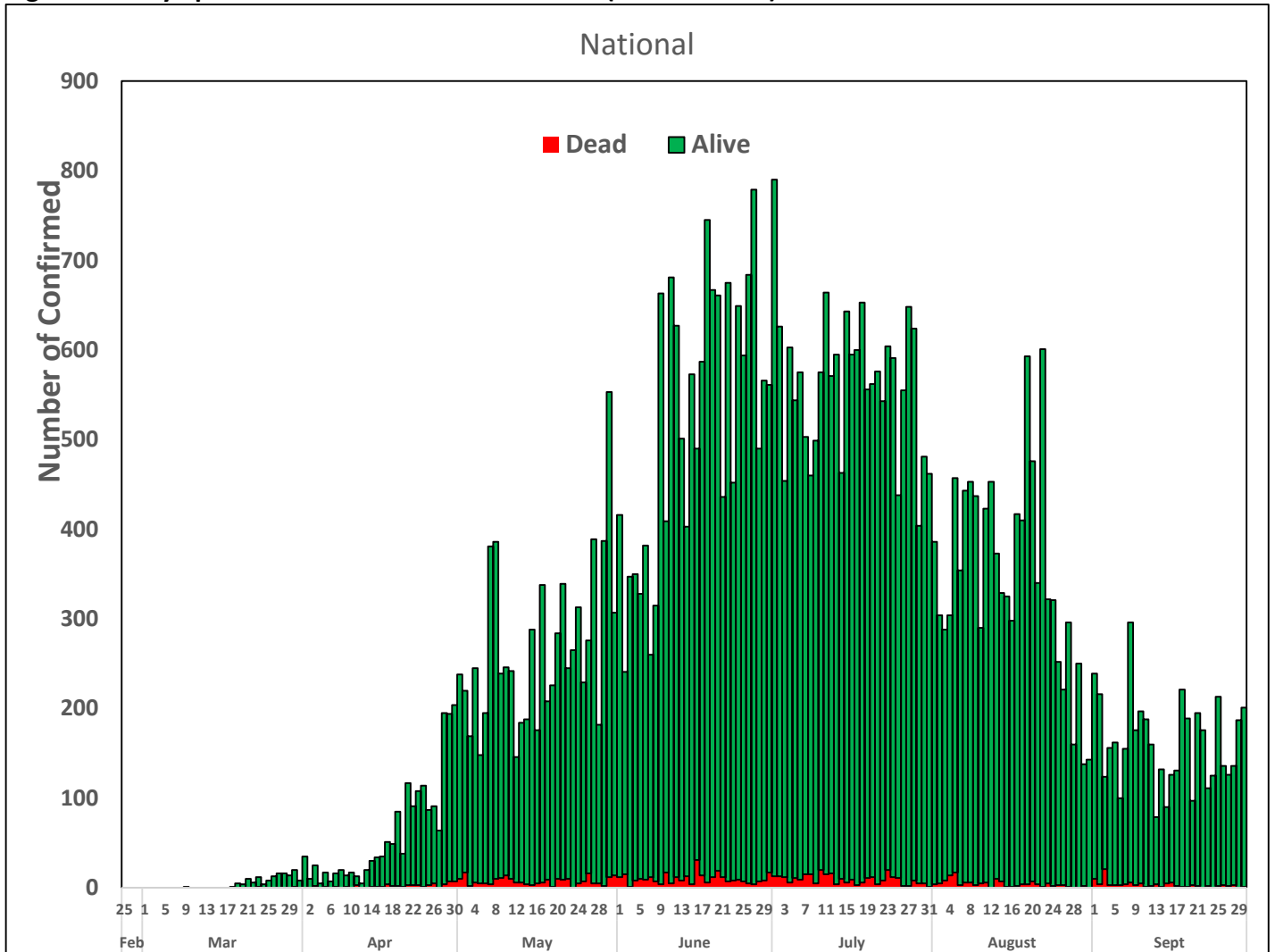
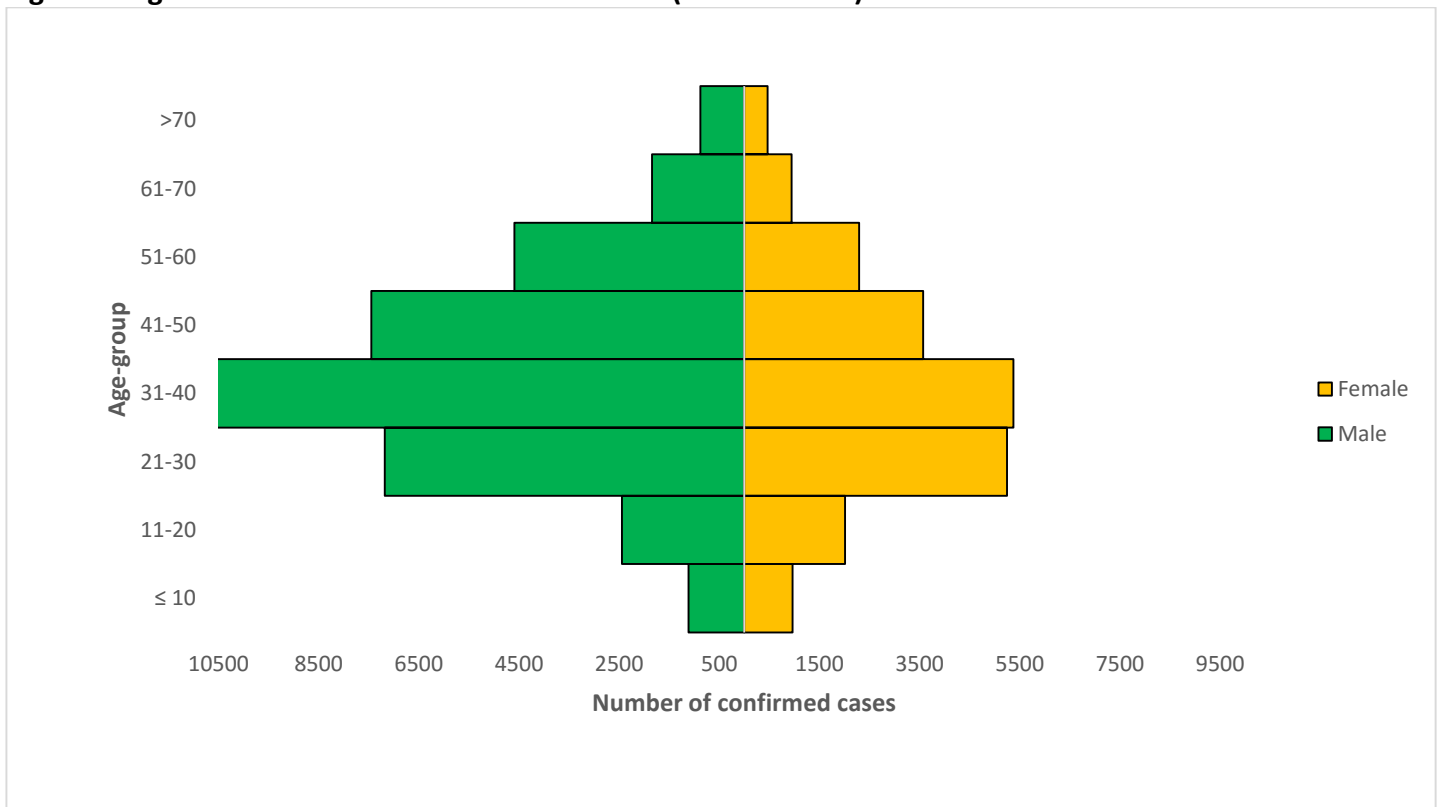


Figure 3: Age-Sex Distribution of Confirmed Cases (WK9 – WK40)



PREPAREDNESS

Since the confirmation of the first case on 27th February 2020, the NCDC has released advisories and statements to help Nigerians and affected groups in particular to respond to the pandemic

- NCDC published second interim guidance – Infection Prevention and Control: [Recommendations during health care provision for suspected and confirmed cases of COVID-19](#)
- NCDC recently published the first edition of a quick reference guide on setting up sample collection centre - [A step by step guide on setting up a sample collection centre](#)
- NCDC has launched an online course on [Infection, Prevention and Control \(IPC\) for COVID-19](#) NCDC eLearning platform
- Ahead of forthcoming elections in the country, NCDC has issued [Guidelines for Conducting Elections During the COVID-19 Outbreak in Nigeria](#).
- To protect our elders, and those with pre-existing medical conditions, NCDC has issued an [Advisory for Vulnerable Groups](#).
- NCDC has released [guidelines on the re-opening of places for worship](#).
- NCDC has released [Strategies to Improve Surveillance for COVID-19 Guidance for States](#)
- The Nigeria Police Force has released COVID-19 operational guidelines for the [Police and other Law Enforcement Agencies](#) in Nigeria
- Guidelines have been issued for the [safe transportation of remains of persons suspected or confirmed to have died of COVID-19](#)
- Information on diagnostics of the COVID-19 virus can be found in our [detailed FAQ document](#).
- To increase our testing capacity, NCDC has issued guidelines for the [integration of private labs](#).
- Guidelines for [businesses and employers](#) have been updated.
- NCDC has updated its [case definition](#) , [community case definition](#) and [case management guide](#).
- NCDC releases periodic [public health advisories](#) to Nigerians on the COVID-19 disease.
- To adhere to post-lockdown measures, NCDC has released an [advisory on the use of face masks](#), as well as information on the [Use of Cloth face masks](#) and [how to make your cloth face masks](#).
- NCDC has released guidelines for the [management of pregnant women and nursing mothers](#) during the pandemic.
- To address burials of loved ones who die from COVID-19, guidelines have been issued to advise on the [management of dead bodies](#).
- For health centres managing cases, the following documents have been released- a guideline for the [Rational Use of Personal Protective Equipment in the care of COVID-19 cases](#).
- As part of plans to increase the testing capacity of the country, the NCDC published a [National Strategy to Scale Up Access to Coronavirus Disease Testing in Nigeria](#) document.
- The Presidential Task Force has published policies and announcements on COVID-19 [available on the website of the Presidency](#) – including presidential addresses, task force updates and information on livelihood and economic support.

RESPONSE

On 28th February 2020, a multi-sectoral Emergency Operations Centre (EOC) was activated at Level 3 – the highest emergency level in Nigeria –led by NCDC in close coordination with the State Public Health EOCs (PHEOC).

- **Conducted capacity building of 100 Voluntary Community Mobilisers (VCMs) in Jos North/South, Plateau**
- **Held meeting with Standard Organisation of Nigeria (SON) to finalise guidelines on COVID-19 prevention for tourism, parks, transport, hotels and creative industry**
- Commissioned a new molecular laboratory at the Infectious Diseases Care Centre in the Abuja University Teaching Hospital (AUTH), Gwagwalada FCT
- Supportive supervision provided to set up triage areas across secondary health facilities in Ilorin West LGA, Kwara State
- All education materials can be found via www.covid19.ncdc.gov.ng