



SITUATION REPORT

Nigeria Centre For Disease Control (NCDC)

NCDC.GOV.NG

PLOT 800 EBITU UKIWE STREET, JABI ABUJA, NIGERIA TOLL FREE CALL: 6232 E:info@ncdc.gov.ng

@NCDCgov

TITLE:	UPDATE ON MPOX IN NIGERIA
SERIAL NUMBER:	36
EPI-WEEK:	52 (December 26 2022 – January 1 2023)
DATE:	January 1, 2023

Table 1 – Key Indicators

Key Indicators	Number
Total confirmed cases in Epi Week 52	7
Total suspected cases (Epi week 1 to 52)	2124
Total confirmed cases (Epi week 1 to 52)	763
Total deaths (Epi week 1 to 52)	7
Total deaths Sept 2017 – till date	15
Total confirmed cases in 2017	88
Total confirmed cases in 2018	49
Total confirmed cases in 2019	47
Total confirmed cases in 2020	8
Total confirmed cases in 2021	34
Grand total confirmed cases (Sept 2017 till Date)	989
Grand total suspected cases (Sept 2017 till date)	2633

- Twenty-seven (27) new suspected cases reported in Epi week 52, 2022 from ten (10) states and FCT – Lagos (5), Bayelsa (4), Enugu (4), Ondo (3), Edo (2), FCT (2), Imo (2), Ogun (2), Kebbi (1), Kogi (1) and Nasarawa (1).
- Of the twenty-seven (27) suspected cases, seven (7) new confirmed cases have been recorded in Epi week 52 from three (3) states – Ondo (3), FCT (2), Lagos (1) and Imo (1)
- From 1st January till date, Nigeria has recorded 2124 suspected cases with 763 confirmed cases (501 male, 261 female) from thirty-four (34) states and FCT – Lagos (188), Abia (58), Bayelsa (45), Imo (45), Ogun (40), Ondo (40) Rivers (37), Delta (31), Edo (27), Anambra (25), FCT (23), Kwara (21), Nasarawa (17), Adamawa (16), Plateau (16), Kaduna (15), Cross River (12), Ebonyi (12), Akwa Ibom (12), Borno (11), Benue (10), Oyo (10), Katsina (8), Taraba (7), Kano (7), Gombe (6), Kogi (5), Osun (5), Enugu (4), Kebbi (2), Niger (1), Bauchi (1), Zamfara (1), Not specified (1), Ekiti (1), Yobe (1).
- Seven (7) associated deaths were recorded from 7 states in 2022 – Delta (1), Lagos (1), Ondo (1), Akwa Ibom (1), Kogi (1), Taraba (1), and Imo (1). **CFR 0.9%**



- Since the re-emergence of Mpox in September 2017, **2633** suspected cases have been reported from 36 states and FCT in the country. Of these, 989(37.7%) of 2633 have been confirmed with majority (655) from 34 states and FCT - Lagos (218), Rivers (89), Bayelsa (88), Abia (61), Delta (60), Imo (53), Ogun (41), Ondo (40), Edo (37), FCT (29), Anambra (27), Cross-River (26), Kwara (21), Plateau (19), Akwa Ibom (19), Nasarawa (19), Adamawa (16), Oyo (16), Kaduna (15), Ebonyi (13), Benue (12), Borno (11), Katsina (8), Enugu (8), Taraba (7), Kano (7), Gombe (6), Kogi (5), Osun (5), Ekiti (3), Niger (2), Kebbi (2), Bauchi (1), Zamfara (1) and Yobe (1).
- Fifteen (15) deaths have been recorded since September 2017 (CFR= 1.5%) in nine (9) states - Lagos (3), Edo (2), Imo (2), Cross River (1), FCT (1), Rivers (1), Ondo (1) Delta (1), Akwa Ibom (1), Taraba (1) and Kogi (1).

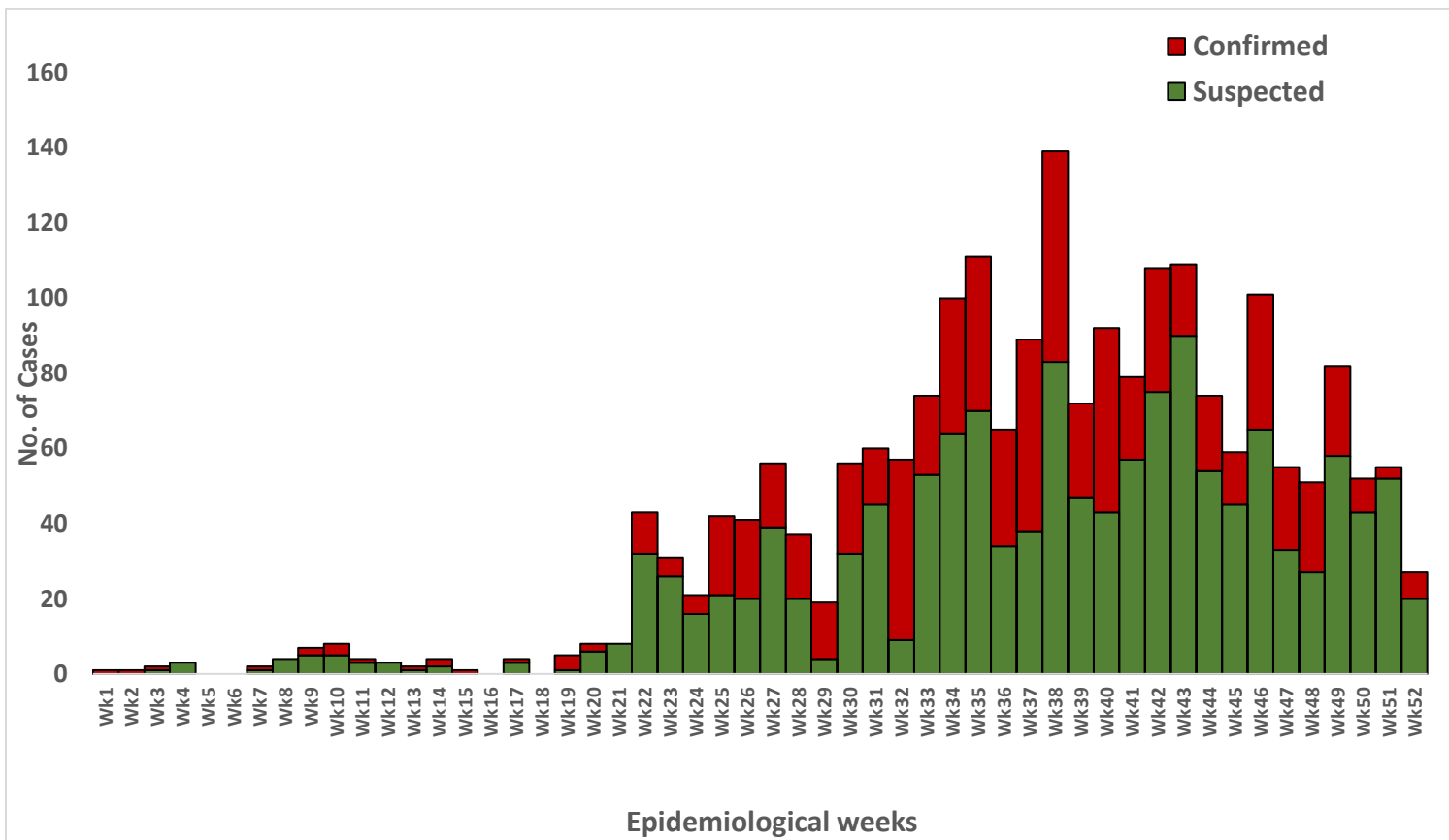


Figure 1: Epidemic Curve of Suspected & Confirmed Mpox Cases from Epi week 1-52

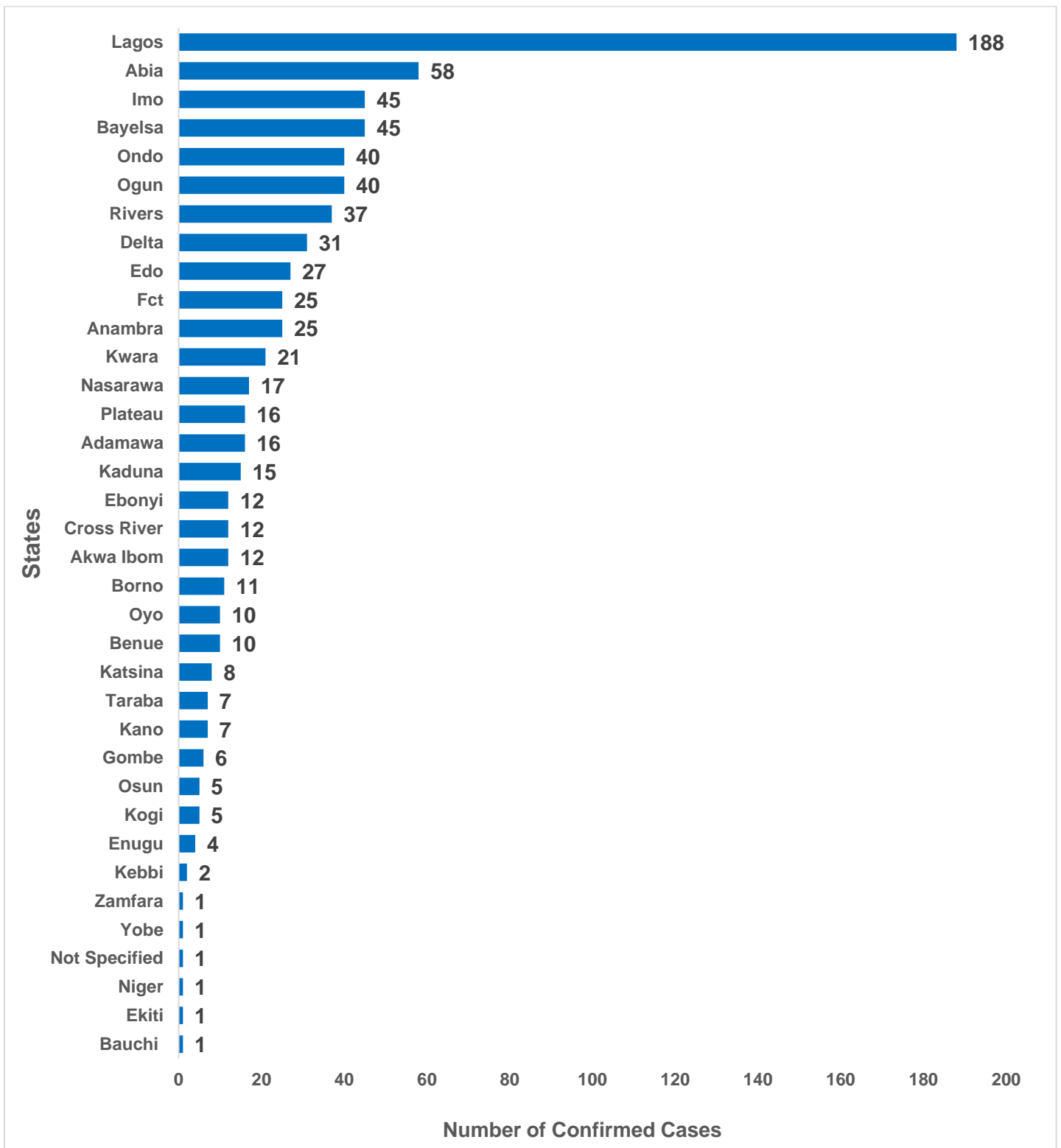


Figure 2: Bar chart showing confirmed Mpox cases by state from Epi week 1-52

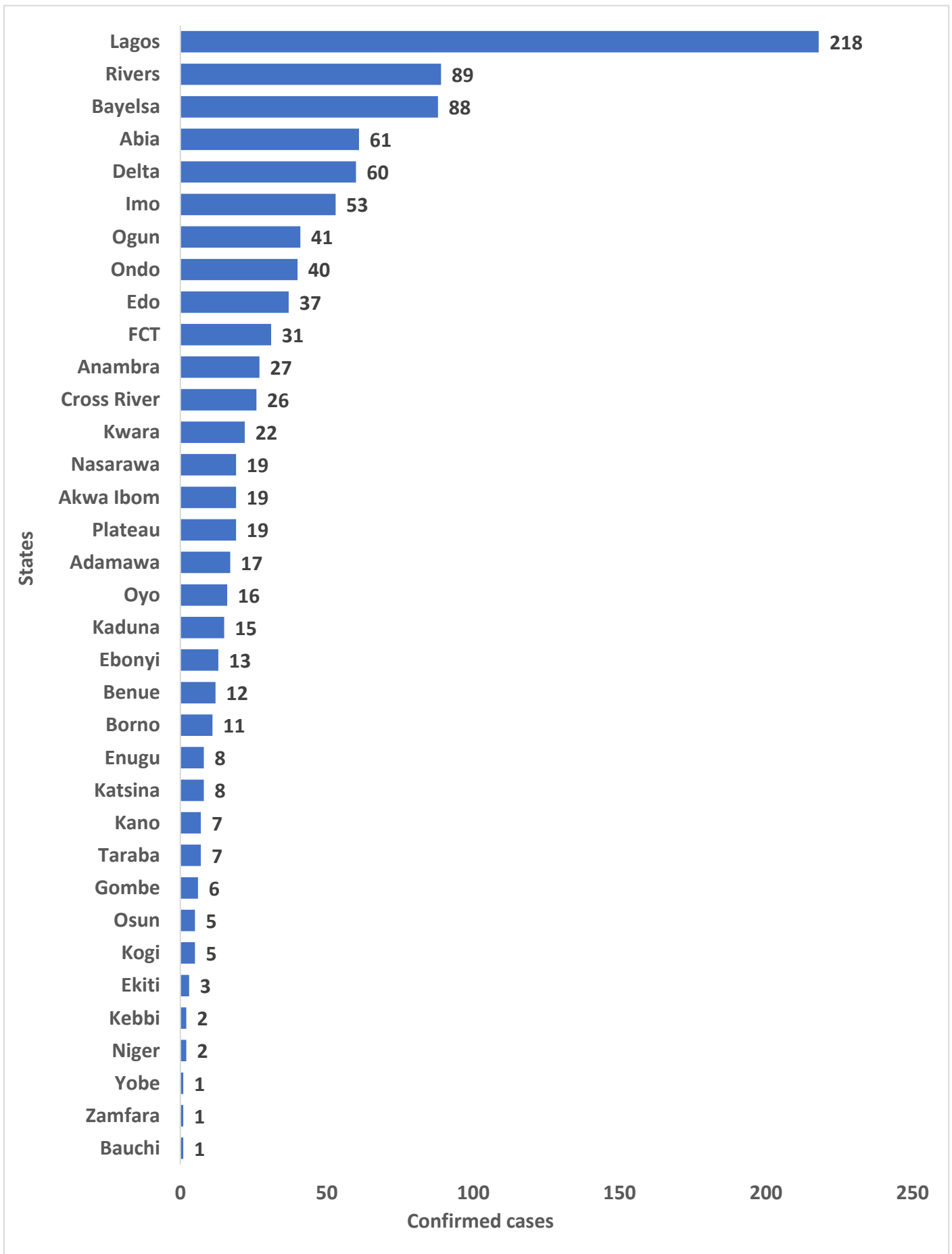


Figure 3: Bar chart Showing confirmed Mpox cases by state, September 2017 till date

Table 2: Nigeria confirmed Mpox cases by state, September 2017 till date

S/N	State	2017	2018	2019	2020	2021	2022	Total
1	Lagos	4	1	15	4	6	188	218
2	Rivers	25	14	7	1	5	37	89
3	Bayelsa	19	11	7	0	6	45	88
4	Abia	1	2	0	0	0	58	61
5	Delta	3	6	10	1	9	31	60
6	Imo	5	2	1	0	0	45	53
7	Ogun	0	0	0	0	1	40	41
8	Ondo	0	0	0	0	0	40	40
9	Edo	4	1	1	0	4	27	37
10	FCT	5	0	0	0	1	25	31
11	Anambra	0	1	1	0	0	25	27
12	Cross River	9	3	1	0	1	12	26
13	Kwara	0	0	1	0	0	21	22
14	Plateau	0	2	0	1	0	16	19
15	Akwa Ibom	6	0	1	0	0	12	19
16	Nasarawa	1	1	0	0	0	17	19
17	Adamawa	0	0	0	1	0	16	17
18	Oyo	1	3	2	0	0	10	16
19	Kaduna	0	0	0	0	0	15	15
20	Ebonyi	0	0	0	1	0	12	13
21	Benue	2	0	0	0	0	10	12
22	Borno	0	0	0	0	0	11	11
23	Katsina	0	0	0	0	0	8	8
24	Enugu	1	2	1	0	0	4	8
25	Taraba	0	0	0	0	0	7	7
26	Kano	0	0	0	0	0	7	7
27	Gombe	0	0	0	0	0	6	6
28	Kogi	0	0	0	0	0	5	5
29	Osun	0	0	0	0	0	5	5
30	Ekiti	2	0	0	0	0	1	3
31	Niger	0	0	0	0	1	1	2
32	Kebbi	0	0	0	0	0	2	2
33	Bauchi	0	0	0	0	0	1	1
34	Zamfara	0	0	0	0	0	1	1
35	Yobe	0	0	0	0	0	1	1
	Grand Total	88	49	47	8	34	763	989

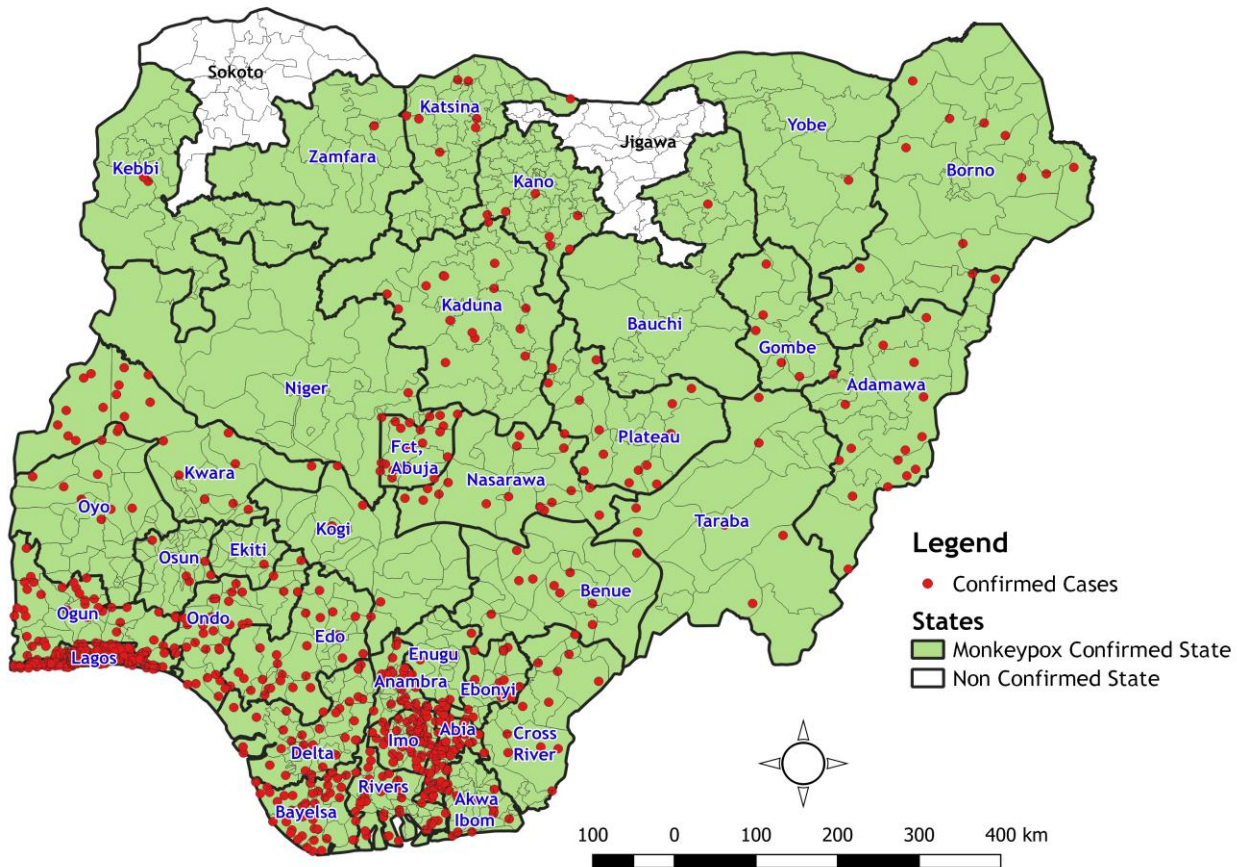


Figure 4: Map of Nigeria Showing States with Confirmed Mpox Cases from January 2022 till date (34 states and FCT)

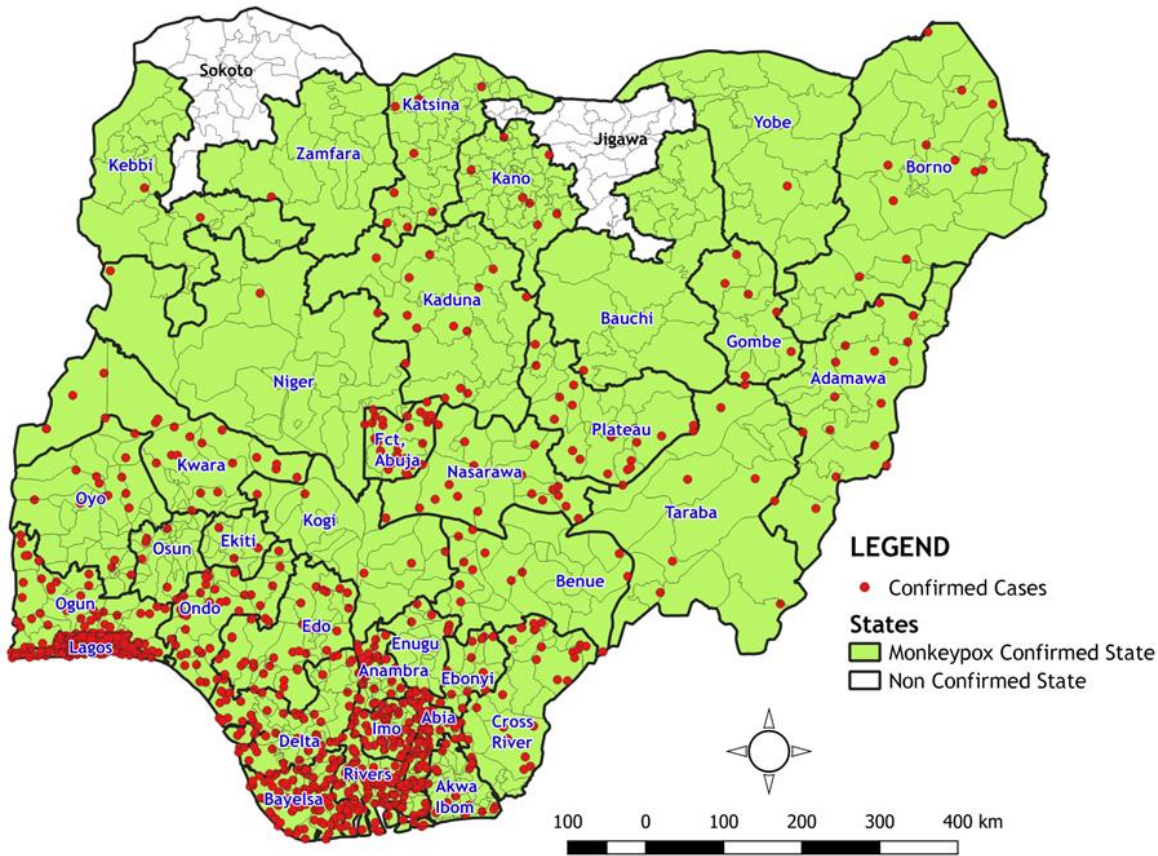


Figure 5: Map of Nigeria Showing States with Confirmed Mpox Cases from September 2017 till date (34 states and FCT)

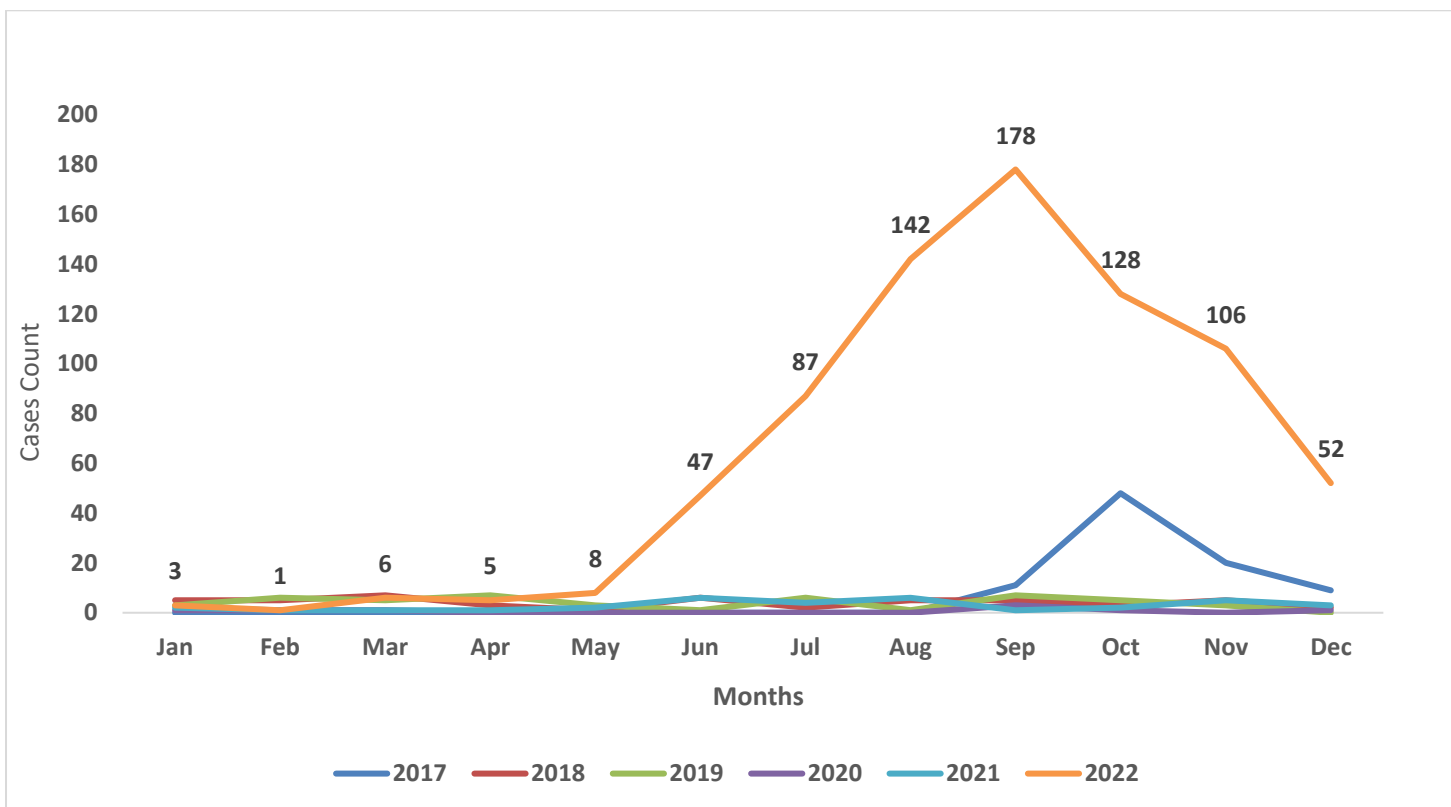


Figure 6: Nigeria confirmed Monkeypox cases by the year of incidence- September 2017 till date

Table 3: Age distribution of confirmed Mpox cases September 2017 till date

Age Group	2017	2018	2019	2020	2021	2022	Total
0-10 Years	7	5	1	0	1	125	139
11-20 Years	12	4	1	0	4	123	144
21-30 Years	34	13	13	4	10	188	262
31- 40 Years	26	17	22	4	13	205	287
41-50 Years	9	10	9	0	5	89	122
> 50	0	0	1	0	1	33	35
Total	88	49	47	8	34	763	989

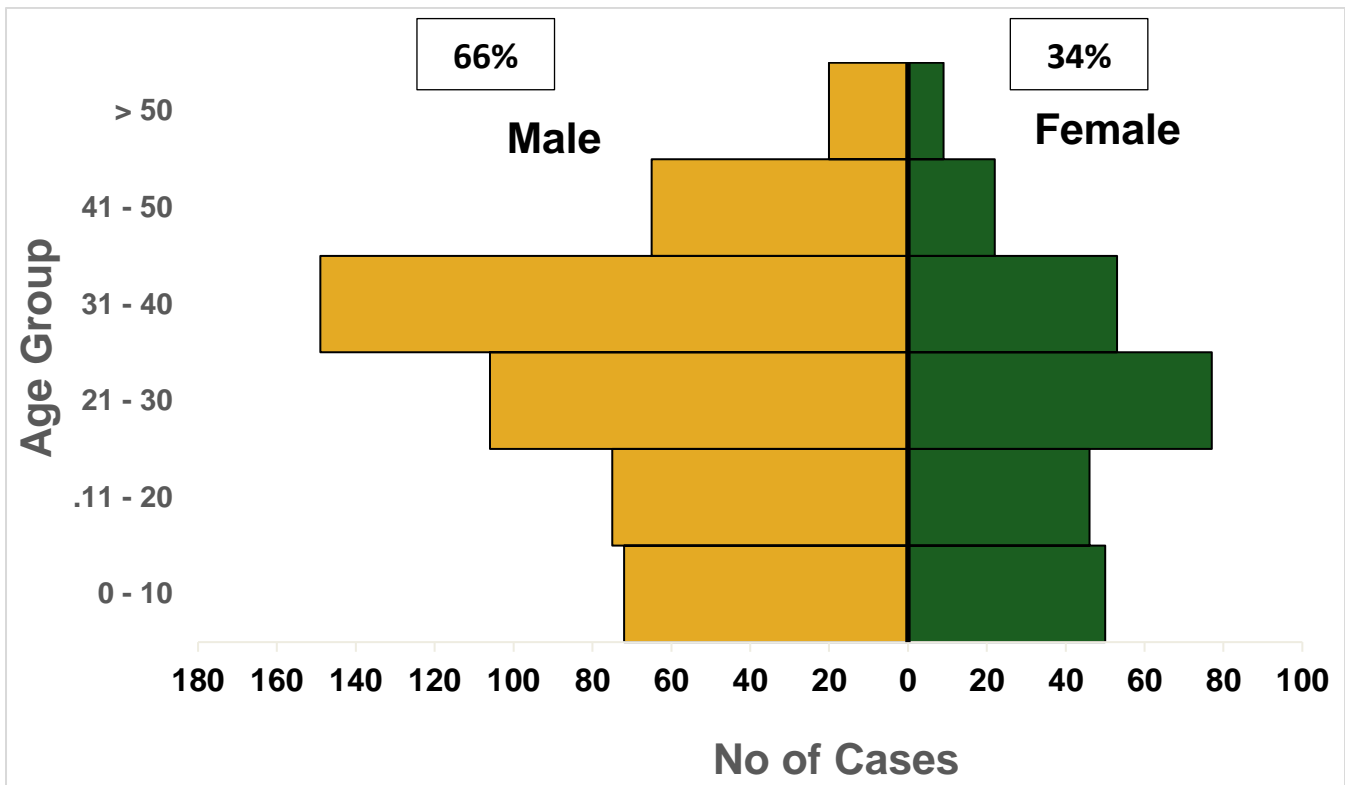


Figure 7: Age and sex distribution of Nigeria confirmed Mpox cases Epi week 1-52

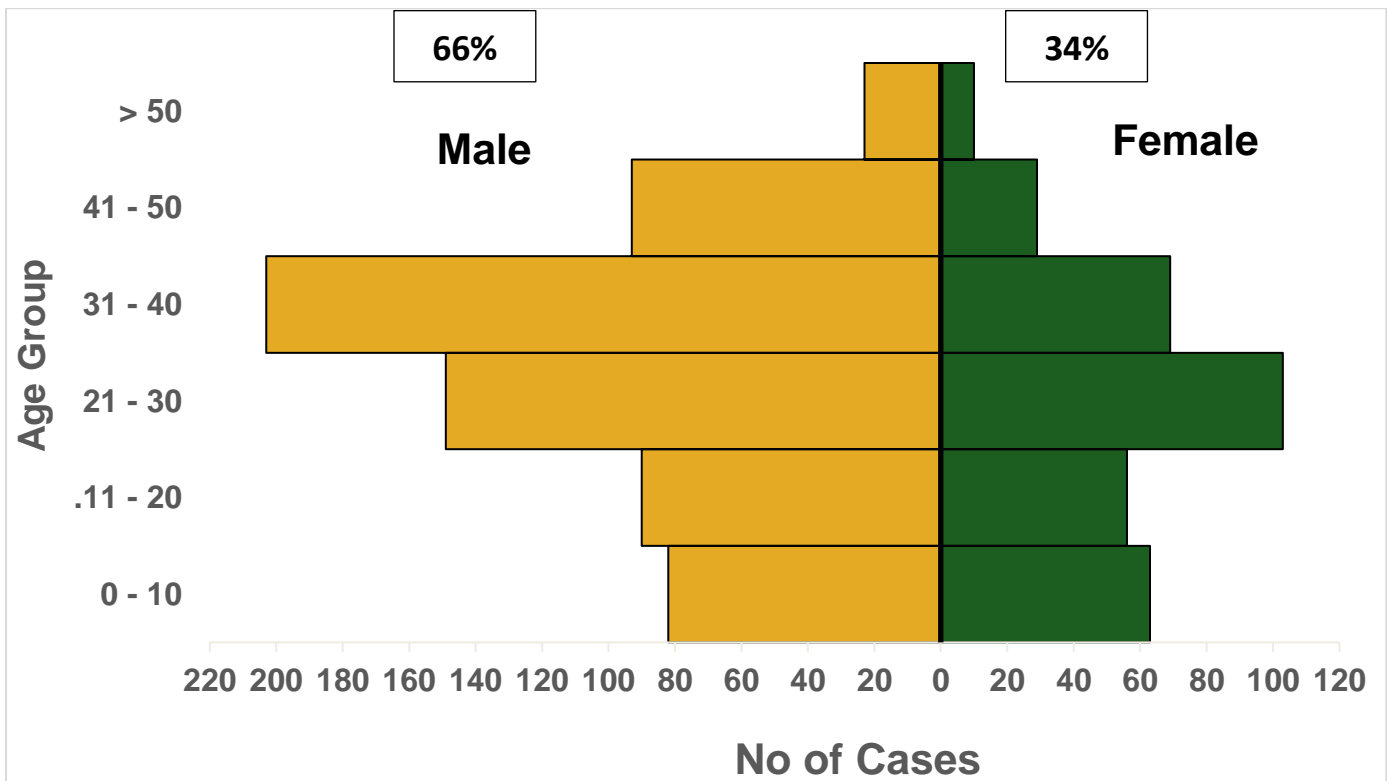


Figure 8: Age and sex distribution of Nigeria confirmed Mpox cases September 2017 to date

Response activities

Pillar	Activities to date	Next steps
Coordination	<ul style="list-style-type: none"> Supported the daily activities of the activated Emergency Operations Centre (EOC) 	<ul style="list-style-type: none"> Coordinate ongoing response activities in the country while contributing to the global response
Risk communication	<ul style="list-style-type: none"> Tracked, monitored and responded to rumours and misinformation of Mpox in Nigeria 	<ul style="list-style-type: none"> Continue engagement of social media channels with key messages on Mpox prevention
Surveillance and case management	<ul style="list-style-type: none"> Provided off-site support to states on case identification through active search, reporting and response to states' surveillance teams and SSO 	<ul style="list-style-type: none"> Ensure timely uploading of cases to the SORMAS platform
POE	<ul style="list-style-type: none"> Screened for suspected cases at points of entry for persons of Interest 	
Laboratory	<ul style="list-style-type: none"> Continue off-site support to states on sample collection and management from sites to the testing lab. 	

Notes on this report

Data Source

Information for this disease was case-based data retrieved from the National Mpox Emergency Operations Centre.

Case definitions

Suspected case

- An acute illness with fever $>38.3^{\circ}\text{C}$, intense headache, lymphadenopathy, back pain, myalgia, and intense asthenia followed one to three days later by a progressively developing rash often beginning on the face (most dense) and then spreading elsewhere on the body, including soles of feet and palms of the hand

Probable case

- A case that meets the clinical case definition is not laboratory-confirmed but has an epidemiological link to a confirmed case

Confirmed case

- A clinically compatible case that is laboratory confirmed

Contact

- Any person who has been in direct or indirect contact with a confirmed case since the onset of symptoms, i.e., contact with skin lesions, oral secretions, urine, faeces, vomitus, blood, sexual contact,

sharing a common space (anyone who has been in proximity with or without physical contact with a confirmed case)

Calculations

- Case Fatality Rate (CFR) for this disease is reported for confirmed cases only