

# COVID-19 SITUATION REPORT

## SITUATION REPORT 210

Friday, 25<sup>th</sup> September 2020



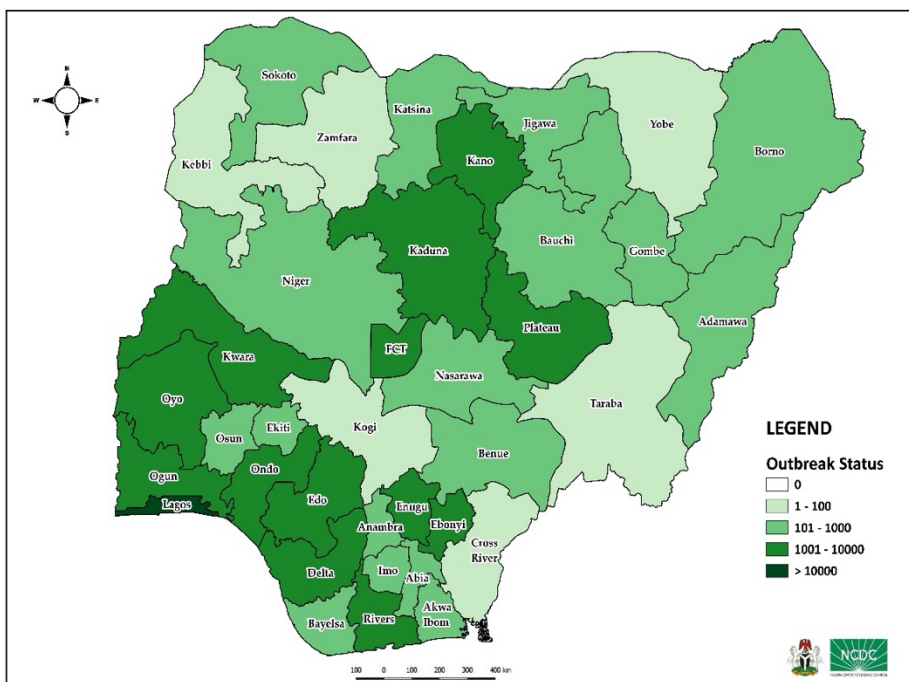
DATA AS REPORTED AND ACCURATE BY NCDC AS AT MIDNIGHT 25<sup>TH</sup> SEPTEMBER 2020

### HIGHLIGHTS

- Two hundred and thirteen (**213**) confirmed cases were reported in the last 24 hours from **17** states – Lagos (51), Plateau (51), FCT (29), Rivers (18), Ondo (12), Oyo (9), Osun (8), Gombe (7), Ogun (7), Kaduna (5), Enugu (4), Edo (3), Jigawa (3), Kano (3), Benue (1), Delta (1), and Sokoto (1).
- Five hundred and eight (**508**) discharges have been reported in the last 24 hours in **ten** states – Katsina (364), Oyo (57), Kwara (30), FCT (23), Plateau (17), Rivers (7), Kaduna (4), Ogun (3), Delta (2) and Osun (1).
- Two** deaths were reported in the last 24 hours in **one** state – Kaduna.
- All **36** states in Nigeria, and the FCT, have reported a confirmed case.

### STATE OF THE NATION

Figure 1: Map of Nigeria showing 36 states and FCT affected by COVID-19



### SITUATION UPDATES

Total (New in the last 24 hours)

SAMPLES TESTED

**502,545 (2,635)<sup>1</sup>**

CONFIRMED CASES

**58,062 (213)**

AFFECTED STATES INCLUDING FCT

**37**

DISCHARGED CASES

**49,606 (508)**

CONFIRMED FATALITIES

**1,103 (2)<sup>2</sup> – 1.9% CFR**

DEMOGRAPHICS

MALE – 36,933 (**64%**)

FEMALE – 21,129 (**36%**)

MOST AFFECTED AGE GROUP

31 - 40 (**27%**)

PERSONS OF INTEREST

**11,777 (Total)**

**11,710 (99.4% - Exceeded Follow Up)**

PROVENANCE

TRAVEL HISTORY – **984 (1.7%)**

CONTACTS – **15,500 (26.7%)**

UNKNOWN EXPOSURE – **41,578 (71.6%)**

GLOBAL UPDATES

TOTAL NUMBER OF CASES

**32,110,656 (980,031 deaths)**

COUNTRIES & TERRITORIES AFFECTED

**216\***

<sup>1</sup>Includes 157 travel tests solely from FCT travel data

<sup>2</sup>See errata in page 2

\*Excluding the 2 International Conveyance



## GENERAL FACT SHEET – DATA AS AT 25<sup>th</sup> SEPTEMBER 2020

Table 1: States with reported laboratory-confirmed COVID-19 cases, recoveries, deaths and days since last reported case.

STATES	CONFIRMED CASES		DISCHARGED CASES		DEATHS		TOTAL ACTIVE CASES	DAYS SINCE LAST REPORTED CASE
	TOTAL	NEW	TOTAL	NEW	TOTAL	NEW		
Lagos	19,174	51	15,246	0	204	0	3,724	0
FCT	5,644	29	4,958	23	78	0	608	0
Plateau	3,373	51	2,511	17	31	0	831	0
Oyo	3,248	9	2,316	57	39	0	893	0
Edo	2,620	3	2,486	0	107	0	27	0
Kaduna	2,389	5	2,268	4	36	2	85	0
Rivers	2,305	18	2,196	7	59	0	50	0
Delta	1,801	1	1,652	2	49	0	100	0
Ogun	1,796	7	1,724	3	28	0	44	0
Kano	1,737	3	1,661	0	54	0	22	0
Ondo	1,620	12	1,545	0	35	0	40	0
Enugu	1,289	4	1,166	0	21	0	102	0
Ebonyi	1,038	0	1,007	0	30	0	1	6
Kwara	1,028	0	955	30	25	0	48	2
Abia	881	0	847	0	8	0	26	7
Gombe	864	7	742	0	25	0	97	0
Katsina	848	0	821	364*	24	0	3	6
Osun	826	8	784	1	17	0	25	0
Borno	741	0	703	0	36	0	2	25
Bauchi	692	0	664	0	14	0	14	3
Imo	566	0	217	0	12	0	337	1
Benue	481	1	413	0	10	0	58	0
Nasarawa	449	0	325	0	13	0	111	3
Bayelsa	397	0	371	0	21	0	5	2
Jigawa	325	3	308	0	11	0	6	0
Ekiti	317	0	295	0	6	0	16	5
Akwa Ibom	288	0	272	0	8	0	8	8
Niger	259	0	232	0	12	0	15	3
Anambra	237	0	213	0	19	0	5	1
Adamawa	234	0	198	0	16	0	20	5
Sokoto	162	1	144	0	17	0	1	0
Taraba	95	0	73	0	6	0	16	14
Kebbi	93	0	84	0	8	0	1	28
Cross River	87	0	74	0	9	0	4	1
Zamfara	78	0	73	0	5	0	0	36
Yobe	75	0	59	0	8	0	8	6
Kogi	5	0	3	0	2	0	0	84
<b>Total</b>	<b>58,062</b>	<b>213</b>	<b>49,606</b>	<b>508</b>	<b>1,103</b>	<b>2</b>	<b>7,353</b>	

States, including FCT, are arranged in descending order by number of total confirmed cases and then alphabetical order

\*- Delayed reporting of discharges over the last one week

### errata

Bayelsa – Deaths – ( an erroneous death reported on 23<sup>rd</sup> September. Correct number is 21)

## SELECTED CHARTS

Figure 2: Daily Epidemic Curve of Confirmed Cases (WK9 – WK39)

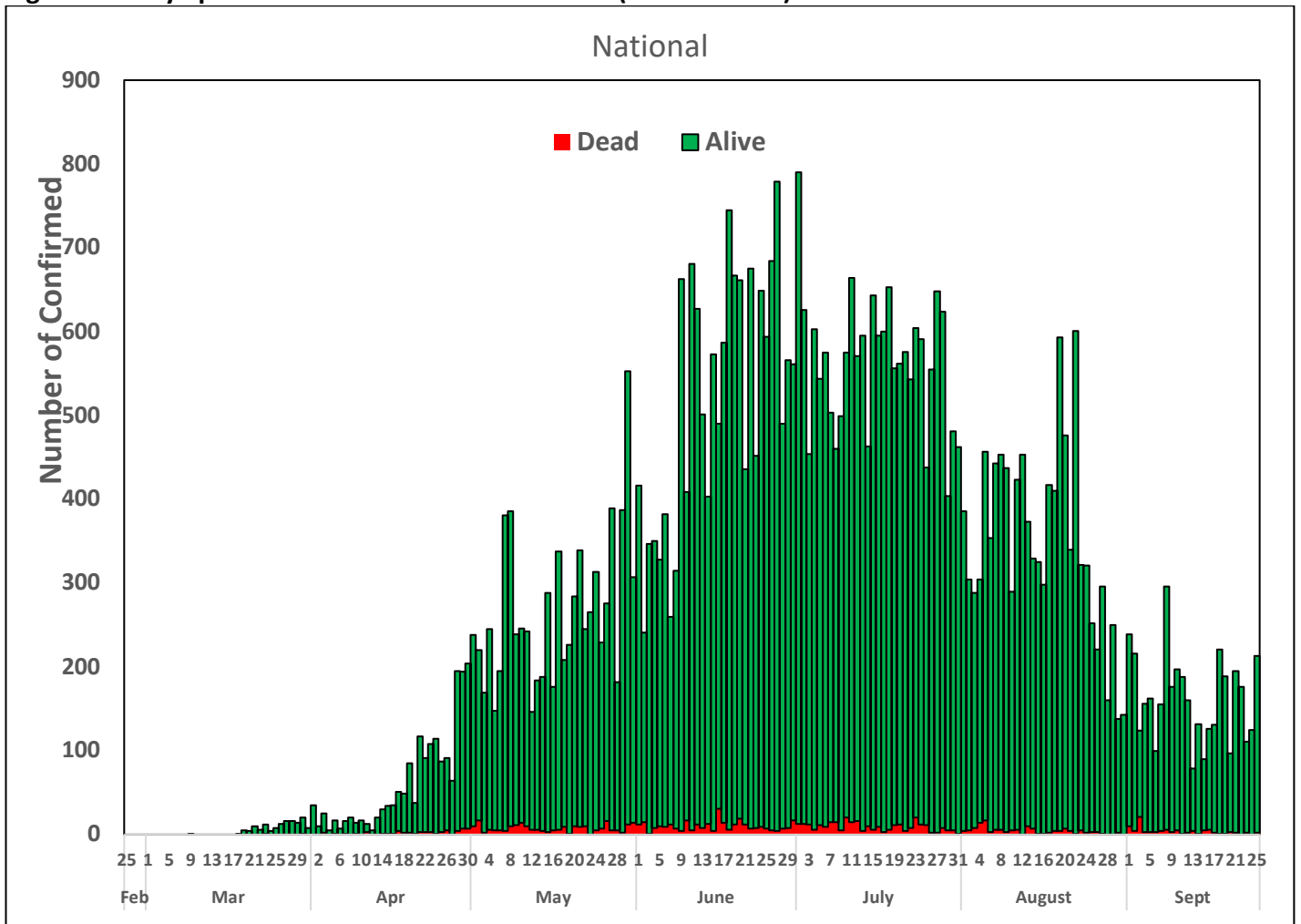
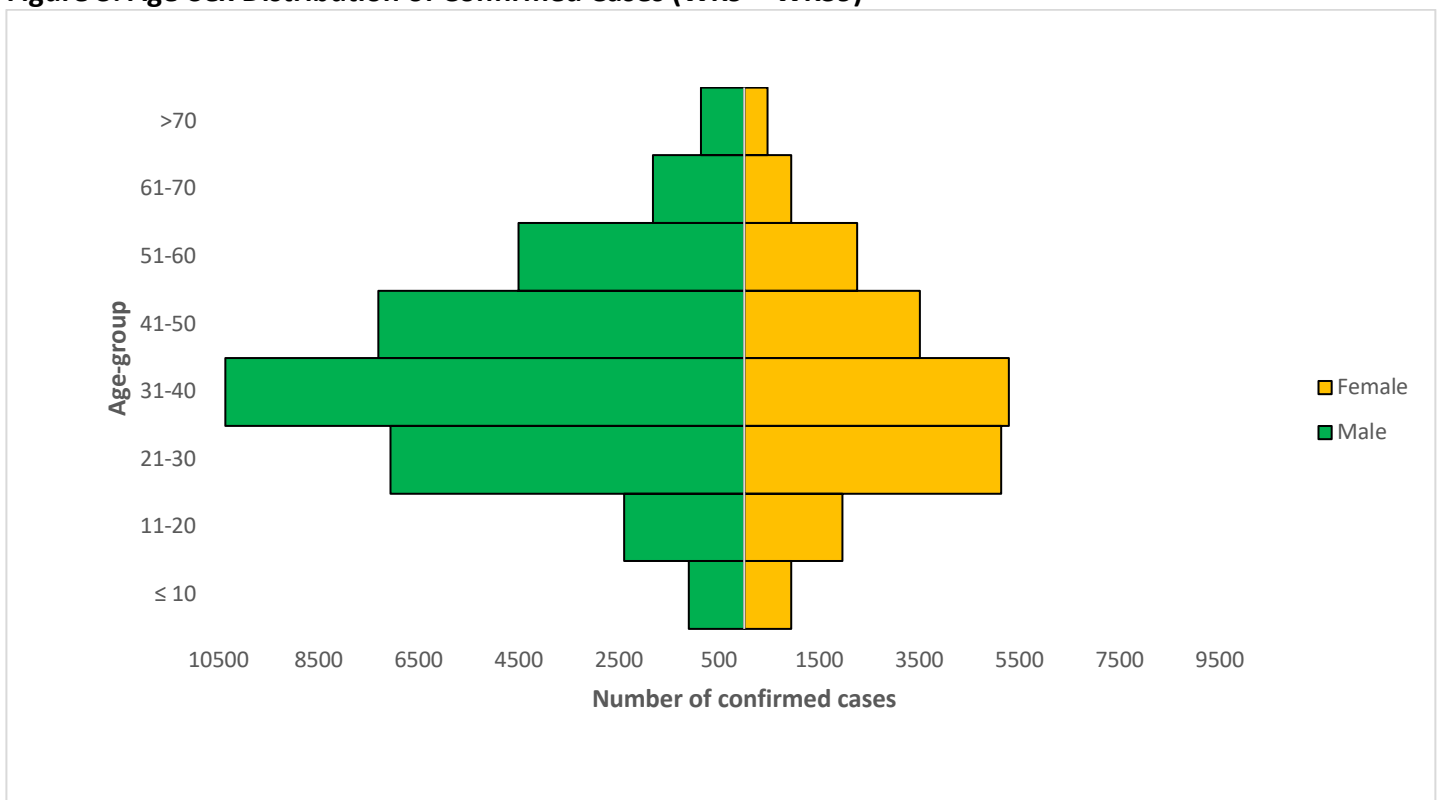


Figure 3: Age-Sex Distribution of Confirmed Cases (WK9 – WK39)



## PREPAREDNESS

Since the confirmation of the first case on 27<sup>th</sup> February 2020, the NCDC has released advisories and statements to help Nigerians and affected groups in particular to respond to the pandemic

- NCDC published second interim guidance – Infection Prevention and Control: [Recommendations during health care provision for suspected and confirmed cases of COVID-19](#)
- NCDC recently published the first edition of a quick reference guide on setting up sample collection centre - [A step by step guide on setting up a sample collection centre](#)
- NCDC has launched an online course on [Infection, Prevention and Control \(IPC\) for COVID-19](#) NCDC eLearning platform
- Ahead of forthcoming elections in the country, NCDC has issued [Guidelines for Conducting Elections During the COVID-19 Outbreak in Nigeria](#).
- To protect our elders, and those with pre-existing medical conditions, NCDC has issued an [Advisory for Vulnerable Groups](#).
- NCDC has released [guidelines on the re-opening of places for worship](#).
- NCDC has released [Strategies to Improve Surveillance for COVID-19 Guidance for States](#)
- The Nigeria Police Force has released COVID-19 operational guidelines for the [Police and other Law Enforcement Agencies in Nigeria](#)
- Guidelines have been issued for the [safe transportation of remains of persons suspected or confirmed to have died of COVID-19](#)
- Information on diagnostics of the COVID-19 virus can be found in our [detailed FAQ document](#).
- To increase our testing capacity, NCDC has issued guidelines for the [integration of private labs](#).
- Guidelines for [businesses and employers](#) have been updated.
- NCDC has updated its [case definition](#) , [community case definition](#) and [case management guide](#).
- NCDC releases periodic [public health advisories](#) to Nigerians on the COVID-19 disease.
- To adhere to post-lockdown measures, NCDC has released an [advisory on the use of face masks](#), as well as information on the [Use of Cloth face masks](#) and [how to make your cloth face masks](#).
- NCDC has released guidelines for the [management of pregnant women and nursing mothers](#) during the pandemic.
- To address burials of loved ones who die from COVID-19, guidelines have been issued to advise on the [management of dead bodies](#).
- For health centres managing cases, the following documents have been released- a guideline for the [Rational Use of Personal Protective Equipment in the care of COVID-19 cases](#).
- As part of plans to increase the testing capacity of the country, the NCDC published a [National Strategy to Scale Up Access to Coronavirus Disease Testing in Nigeria](#) document.
- The Presidential Task Force has published policies and announcements on COVID-19 [available on the website of the Presidency](#) – including presidential addresses, task force updates and information on livelihood and economic support.

## RESPONSE

On 28<sup>th</sup> February 2020, a multi-sectoral Emergency Operations Centre (EOC) was activated at Level 3 – the highest emergency level in Nigeria –led by NCDC in close coordination with the State Public Health EOCs (PHEOC).

- **Out of a total of 1,473 international travelers tested across 3 laboratories in the FCT since the opening of the international travel air space, 22 tested positive**
- **Conducted virtual training on Infection Prevention and Control (IPC) for COVID-19 for 300 Enugu State healthcare workers**
- **Currently working with state structures on engagement of religious leaders across the country in collaboration with partners**

- Ongoing training of 456 Healthcare Workers (HCW) in all 11 LGAs Health care facilities on IPC of COVID-19 in Gombe State supported by partners
- Completed COVID-19 clinical management study in treatment centres in Oyo State
- Concluded a 3-day dialogue with stakeholders in the educational sector in all the geopolitical zones on an integrated approach to safe school re-opening
- All education materials can be found via [www.covid19.ncdc.gov.ng](http://www.covid19.ncdc.gov.ng)