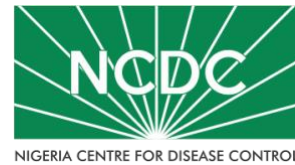


COVID-19 SITUATION REPORT

SITUATION REPORT 157

Monday, 3rd August 2020



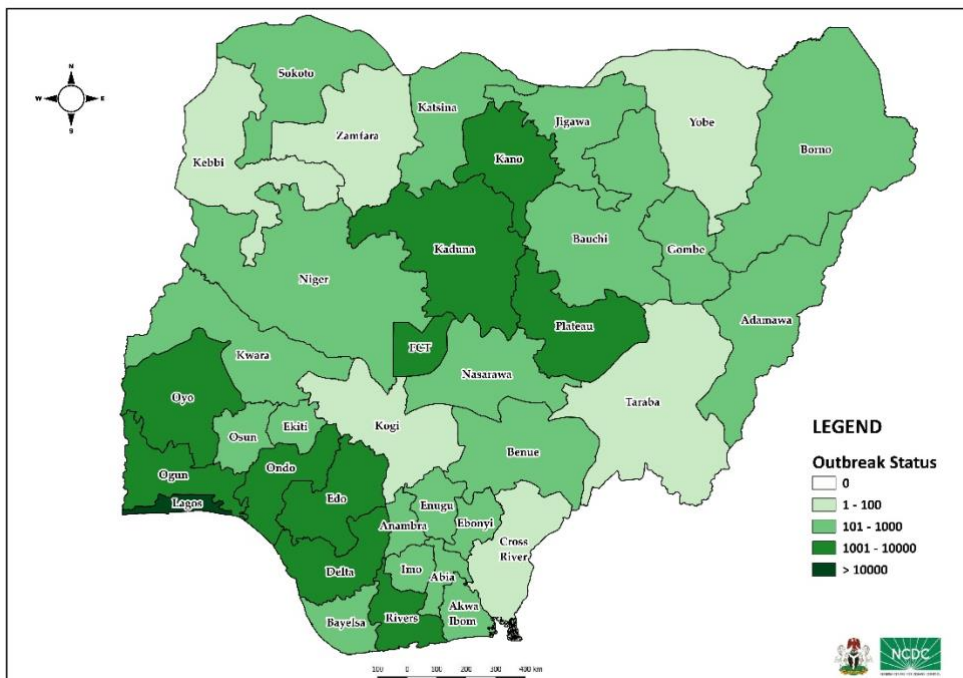
DATA AS REPORTED AND ACCURATE BY NCDC AS AT MIDNIGHT 3rd AUGUST 2020

HIGHLIGHTS

- Two hundred and eighty-eight (**288**) confirmed cases were reported in the last 24 hours from **15** states – Lagos (88), Kwara (33), Osun (27), FCT (25), Enugu (25), Abia (20), Kaduna (17), Plateau (13), Rivers (13), Delta (10), Gombe (8), Ogun (4), Oyo (3), Bauchi (1) and Katsina (1).
- Three hundred and fifty-five (**355**) cases were discharged in the last 24 hours in **14** states – Edo (92), Enugu (60), Kwara (45), Oyo (33), Ogun (25), Osun (23), Kaduna (21), FCT (17), Rivers (17), Kano (12), Bayelsa (5), Imo (3), Gombe (1) and Plateau (1)
- Eight (**8**) deaths were recorded in the last 24 hours in **five** states – Edo (3), Kwara (2), Katsina (1), Ogun (1) and Oyo (1).
- All **36** states in Nigeria, and the FCT, have reported a confirmed case.

STATE OF THE NATION

Figure 1: Map of Nigeria showing 36 states and FCT affected by COVID-19



SITUATION UPDATES

Total (New in the last 24 hours)

SAMPLES TESTED

289,133 (1601)

CONFIRMED CASES

44,129 (288)

AFFECTED STATES INCLUDING FCT

37

DISCHARGED CASES

31,609¹ (355)

CONFIRMED FATALITIES

896 (8) – 2.0% CFR

DEMOGRAPHICS

MALE – 28,470 (65%)

FEMALE – 15,659 (35%)

MOST AFFECTED AGE GROUP

31 - 40 (**25%**)

PERSONS OF INTEREST

11,197 (Total)

11,127 (99.4% - Exceeded Follow Up)

PROVENANCE

TRAVEL HISTORY – 847 (**2%**)

CONTACTS – 10,865 (**25%**)

UNKNOWN EXPOSURE – 32,417 (**73%**)

GLOBAL UPDATES

TOTAL NUMBER OF CASES

17,918,582 (686,703 deaths)

COUNTRIES & TERRITORIES AFFECTED*

214

*Excluding the 2 International Conveyance

¹ Includes updated community recoveries from Lagos State

GENERAL FACT SHEET – DATA AS AT 3rd AUGUST 2020

Table 1: States with reported laboratory-confirmed COVID-19 cases, recoveries, deaths and days since last reported case

STATES	CONFIRMED CASES		DISCHARGED CASES		DEATHS		TOTAL ACTIVE CASES	DAYS SINCE LAST REPORTED CASE
	TOTAL	NEW	TOTAL	NEW	TOTAL	NEW		
Lagos	15,355	88	¹ 13,106	0	192	0	2,057	0
FCT	3,997	25	1,188	17	42	0	2,767	0
Oyo	2,771	3	1,396	33	28	1	1,347	0
Edo	2,311	0	1,984	92	87	3	240	1
Rivers	1,842	13	1,481	17	53	0	308	0
Kano	1,597	0	1,270	12	53	0	274	3
Delta	1,520	10	1,359	0	43	0	118	0
Kaduna	1,498	17	1,248	21	12	0	238	0
Ogun	1,407	4	1,176	25	24	1	207	0
Plateau	1,240	13	535	1	19	0	686	0
Ondo	1,204	0	648	0	25	0	531	1
Enugu	846	25	485	60	18	0	343	0
Ebonyi	808	0	733	0	26	0	49	1
Kwara	786	33	258	45	21	2	507	0
Katsina	746	1	457	0	24	1	265	0
Gombe	620	8	529	1	23	0	68	0
Borno	613	0	569	0	35	0	9	5
Abia	602	20	471	0	5	0	126	0
Osun	580	27	294	23	12	0	274	0
Bauchi	561	1	520	0	13	0	28	0
Imo	469	0	139	3	9	0	321	2
Benue	356	0	64	0	7	0	285	1
Bayelsa	339	0	284	5	21	0	34	2
Nasarawa	339	0	223	0	8	0	108	1
Jigawa	322	0	308	0	11	0	3	18
Niger	223	0	133	0	12	0	78	6
Akwa Ibom	221	0	150	0	7	0	64	8
Adamawa	164	0	85	0	10	0	69	2
Sokoto	154	0	137	0	16	0	1	9
Ekiti	152	0	67	0	2	0	83	1
Anambra	135	0	75	0	12	0	48	5
Kebbi	90	0	79	0	7	0	4	13
Zamfara	77	0	71	0	5	0	1	16
Yobe	67	0	54	0	8	0	5	4
Cross River	58	0	19	0	4	0	35	1
Taraba	54	0	11	0	0	0	43	5
Kogi	5	0	3	0	2	0	0	31
Total	44,129	288	31,609	355	896	8	11,624	

States, including FCT, are arranged in descending order by number of total confirmed cases and then alphabetical order

note

¹ Number includes recoveries from treatment centre and community recoveries managed at home

SELECTED CHARTS

Figure 2: Daily Epidemic Curve of Confirmed Cases (WK9 – WK31)

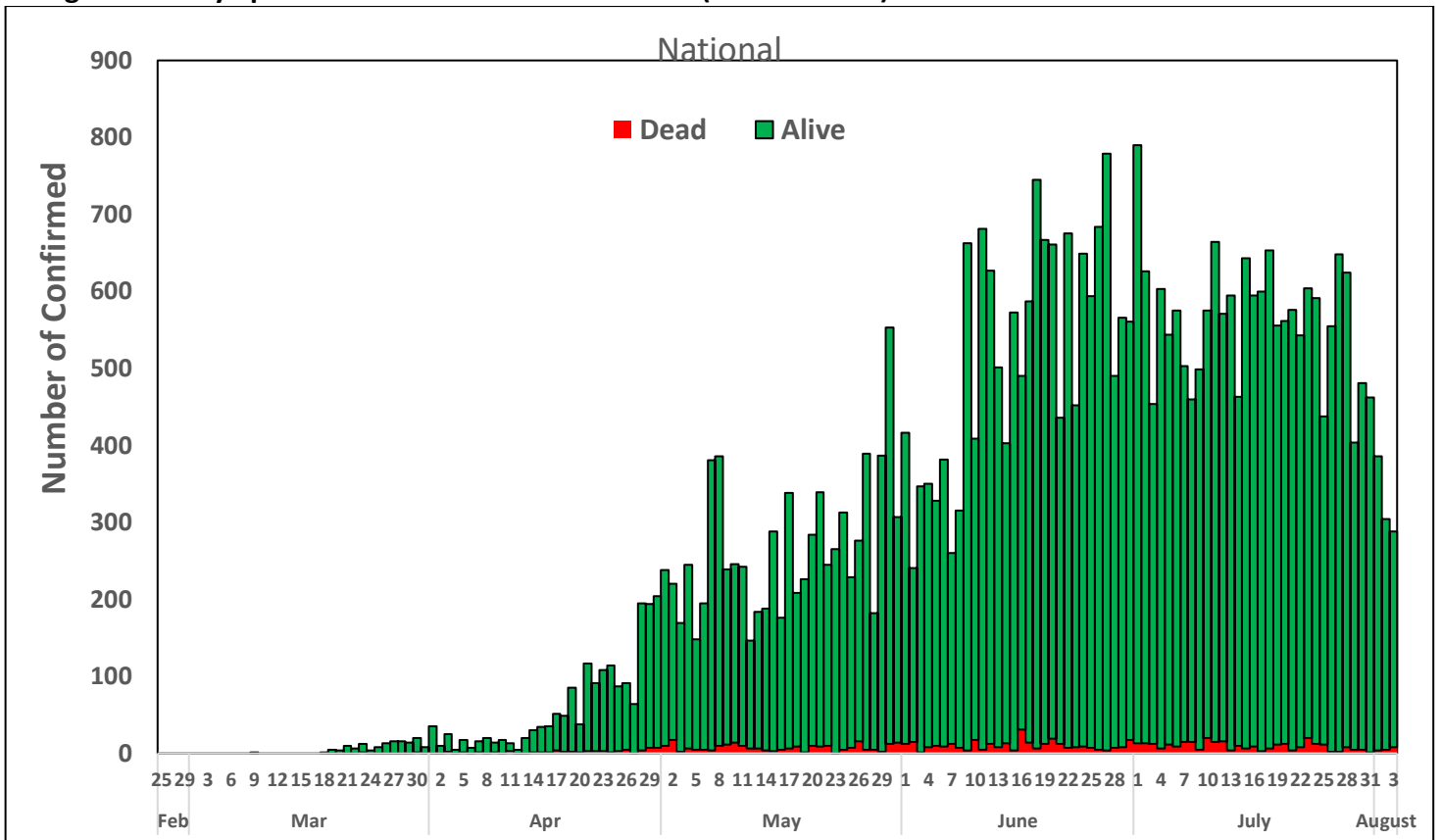
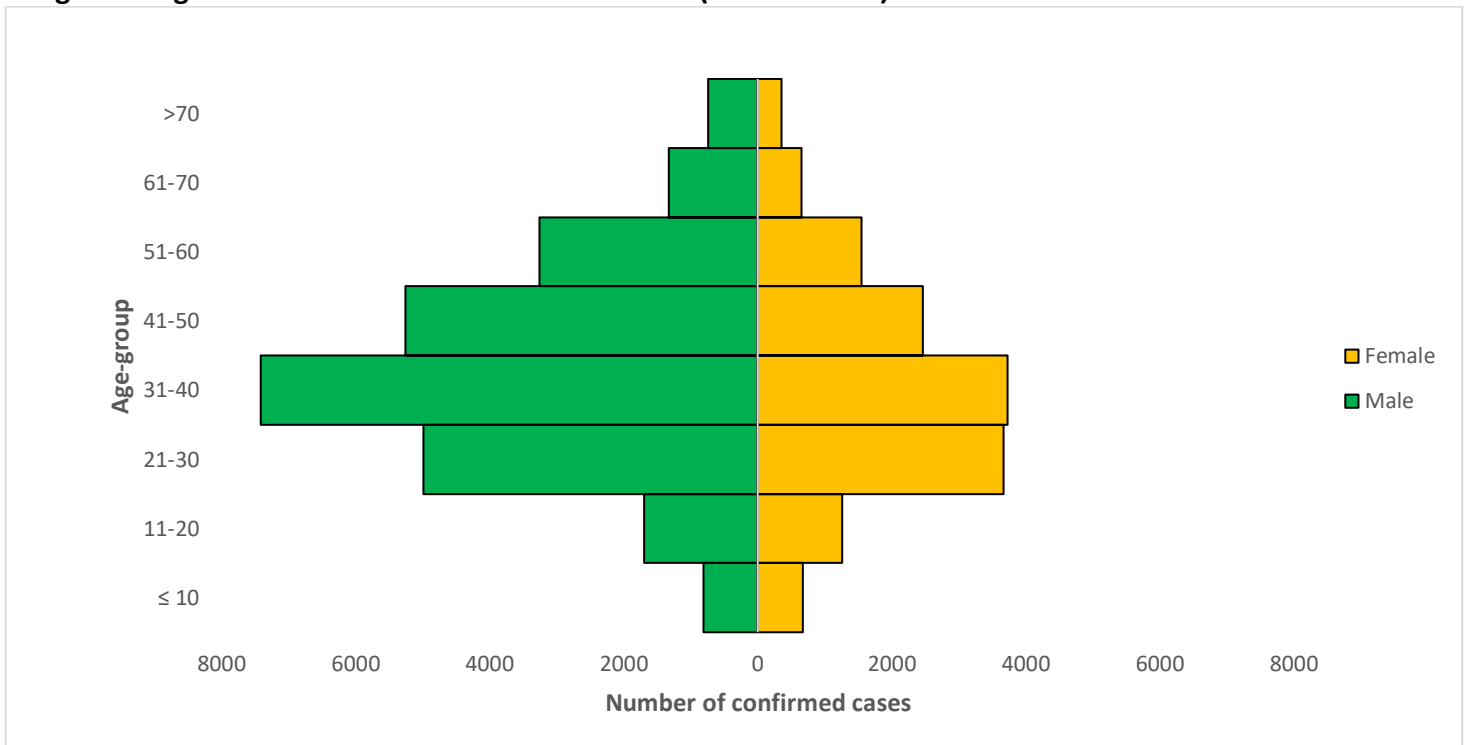


Figure 3: Age-Sex Distribution of Confirmed Cases (WK9 – WK31)



PREPAREDNESS

Since the confirmation of the first case on 27th February 2020, the NCDC has released advisories and statements to help Nigerians and affected groups in particular to respond to the pandemic

- NCDC has launched an online course on [Infection, Prevention and Control \(IPC\) for COVID-19](#) NCDC eLearning platform
- Ahead of forthcoming elections in the country, NCDC has issued [Guidelines for Conducting Elections During the COVID-19 Outbreak in Nigeria](#).
- To protect our elders, and those with pre-existing medical conditions, NCDC has issued an [Advisory for Vulnerable Groups](#).
- NCDC has released [guidelines on the re-opening of places for worship](#).
- NCDC has released [Strategies to Improve Surveillance for COVID-19 Guidance for States](#)
- The Nigeria Police Force has released COVID-19 operational guidelines for the [Police and other Law Enforcement Agencies](#) in Nigeria
- Guidelines have been issued for the [safe transportation of remains of persons suspected or confirmed to have died of COVID-19](#)
- Information on diagnostics of the COVID-19 virus can be found in our [detailed FAQ document](#).
- To increase our testing capacity, NCDC has issued guidelines for the [integration of private labs](#).
- Guidelines for [businesses and employers](#) have been updated.
- NCDC has updated its [case definition](#) , [community case definition](#) and [case management guide](#).
- NCDC releases periodic [public health advisories](#) to Nigerians on the COVID-19 disease.
- To adhere to post-lockdown measures, NCDC has released an [advisory on the use of face masks](#), as well as information on the [Use of Cloth face masks](#) and [how to make your cloth face masks](#).
- NCDC has released guidelines for the [management of pregnant women and nursing mothers](#) during the pandemic.
- To address burials of loved ones who die from COVID-19, guidelines have been issued to advise on the [management of dead bodies](#).
- For health centres managing cases, the following documents have been released- a guideline for the [Rational Use of Personal Protective Equipment in the care of COVID-19 cases](#).
- As part of plans to increase the testing capacity of the country, the NCDC published a [National Strategy to Scale Up Access to Coronavirus Disease Testing in Nigeria](#) document.
- The Presidential Task Force has published policies and announcements on COVID-19 [available on the website of the Presidency](#) – including presidential addresses, task force updates and information on livelihood and economic support.

RESPONSE

On 28th February 2020, a multi-sectoral Emergency Operations Centre (EOC) was activated at Level 3 – the highest emergency level in Nigeria –led by NCDC in close coordination with the State Public Health EOCs (PHEOC).

- **Supported the orientation meeting of Epidemiologists engaged to oversee community volunteers for contact tracing and active case search in 10 states with 20 community volunteers each per state supported by partners**
- **Provided supportive supervision for decontamination of the private clinic where a confirmed case was managed in Calabar, Cross River State**
- **Facilitated interviews for resource persons to provide appropriate narratives on hydroxychloroquine situation**
- **Identified relevant resource persons to feature in the upcoming Human Rights Radio interview series supported by the Presidential Task Force**
- Received a total of 259 Persons of Interest (POIs)/returnees: Egypt (215), Ghana (39) and Congo Brazzaville (5) on 1st of August 2020
- All POIs/returnees were received, screened and given the travellers kit on arrival at the Nnamdi Azikiwe International Airport Abuja (NAIA)
- All returnees were issued COVID-19 test appointment

- Sensitised the association of Proprietors of Private Schools in Nigeria on COVID-19 prevention in schools
- Ongoing distribution of additional response materials, Personal Protective Equipment (PPE), commodities and medicines to all State Ministry of Health (SMOH) and other healthcare facilities
- All education materials can be found via www.covid19.ncdc.gov.ng