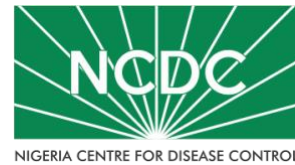


COVID-19 SITUATION REPORT

SITUATION REPORT 103

Wednesday, 10th June 2020



NIGERIA CENTRE FOR DISEASE CONTROL

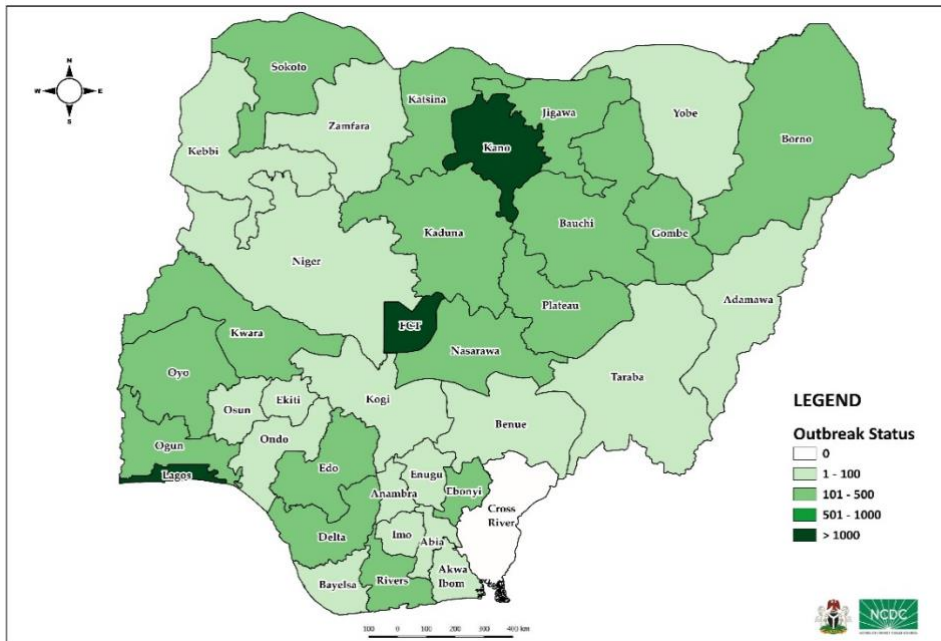
DATA AS REPORTED AND ACCURATE BY NCDC AS AT MIDNIGHT 10th JUNE 2020

HIGHLIGHTS

- Four hundred and nine (**409**) confirmed cases were reported in the last 24 hours from sixteen (**16**) states – Lagos (201), FCT (85), Delta (22), Edo (16), Borno (14), Kaduna (14), Nasarawa (14), Bauchi (10), Rivers (9), Enugu (5), Kano (5), Ogun (4), Ondo (4), Bayelsa (2), Kebbi (2), and Plateau (2).
- No new state recorded a confirmed COVID-19 case in the last 24 hours. The total number of states including FCT that have reported at least one confirmed case in Nigeria is still **36** (35 states + FCT).
- One hundred and forty-five (**145**) cases were discharged in the last 24 hours in fourteen (**14**) states – Ogun (28), Lagos (26), Kano (25), Rivers (21), Abia (9), Ondo (8), Kwara (7), Bauchi (6), FCT (5), Kaduna (3), Ebonyi (3), Edo (2), Osun (1) and Sokoto (1).
- Seventeen (**17**) deaths were recorded in the last 24 hours in seven (**7**) states – Lagos (9), Delta (3), Bauchi (1), FCT (1), Gombe (1), Ondo (1), Rivers (1)

STATE OF THE NATION

Figure 1: Map of Nigeria showing 35 states and FCT affected by COVID-19



SITUATION UPDATES

Total (New in the last 24 hours)

SAMPLES TESTED

85375 (3756)¹

CONFIRMED CASES

13873 (409)

AFFECTED STATES INCLUDING FCT

36 (0)

DISCHARGED CASES

4351 (145)

CONFIRMED FATALITIES

382 (17) – 3% CFR

DEMOGRAPHICS

MALE – 9257 (68%)

FEMALE – 4616 (32%)

MOST AFFECTED AGE GROUP

31 - 40 (24%)

PERSONS OF INTEREST

10150 (Total)

10075 (99.3% - Exceeded Follow Up)

PROVENANCE

TRAVEL HISTORY – 289 (2%)

CONTACTS – 3650 (26%)

UNKNOWN EXPOSURE – 9934 (72%)

GLOBAL UPDATES

TOTAL NUMBER OF CASES

7,145,539 (408,025 deaths)

COUNTRIES & TERRITORIES AFFECTED*

213

*Excluding the 2 International Conveyances

¹ Includes backlog

GENERAL FACT SHEET – DATA AS AT 10TH JUNE 2020

Table 1: States with reported laboratory-confirmed COVID-19 cases, recoveries, deaths and days since last reported case

STATES	CONFIRMED CASES		DISCHARGED CASES		DEATHS		TOTAL ACTIVE CASES	SAMPLES TESTED	DAYS SINCE LAST REPORTED CASE
	CUMULATIVE	NEW	CUMULATIVE	NEW	CUMULATIVE	NEW			
Lagos	6266	201	970	26	81	9	5215	27616	0
FCT	1097	85	280	5	25	1	792	11385	0
Kano	1025	5	522	25	50	0	453	5331	0
Edo	478	16	117	2	25	0	336	4760	0
Ogun	475	4	214	28	13	0	248	2548	0
Rivers	403	9	179	21	22	1	202	1550	0
Katsina	399	0	209	0	21	0	169	2078	1
Oyo	398	0	112	0	7	0	279	3713	1
Kaduna	383	14	233	3	10	0	140	2961	0
Borno	381	14	205	0	26	0	150	2333	1
Bauchi	374	10	230	6	10	1	134	2611	0
Jigawa	309	0	156	0	5	0	148	2256	1
Gombe	246	0	135	0	11	1	100	2730	1
Delta	197	22	50	0	11	3	136	1176	1
Ebonyi	152	0	70	3	0	0	82	1338	1
Kwara	143	0	70	7	1	0	72	1410	1
Plateau	130	2	99	0	3	0	28	1850	0
Sokoto	129	0	102	1	14	0	13	784	3
Nasarawa	127	14	31	0	5	0	91	834	0
Abia	97	0	16	9	0	0	81	420	1
Imo	83	0	19	0	0	0	64	505	1
Zamfara	76	0	71	0	5	0	0	312	23
Yobe	52	0	25	0	7	0	20	116	12
Ondo	50	4	30	8	8	1	12	733	0
Osun	50	0	40	1	4	0	6	639	1
Anambra	46	0	3	0	1	0	42	325	1
Niger	46	0	26	0	1	0	19	413	1
Akwa Ibom	45	0	14	0	2	0	29	295	13
Kebbi	43	2	29	0	4	0	10	485	0
Adamawa	42	0	34	0	4	0	4	441	9
Enugu	35	5	14	0	1	0	20	315	0
Bayelsa	32	2	17	0	3	0	12	141	0
Ekiti	30	0	18	0	2	0	10	329	1
Taraba	18	0	10	0	0	0	8	362	21
Benue	13	0	1	0	0	0	12	266	7
Kogi	3	0	0	0	0	0	3	4	7
Cross River	0	0	0	0	0	0	0	N/A	10
TOTAL	13873	409	4351	145	382	17	9140	85375	

States including FCT are arranged in descending order by number of total confirmed cases, excluding Cross River

SELECTED CHARTS

Figure 2: Daily Epidemic Curve of Confirmed Cases (WK9 – WK24)

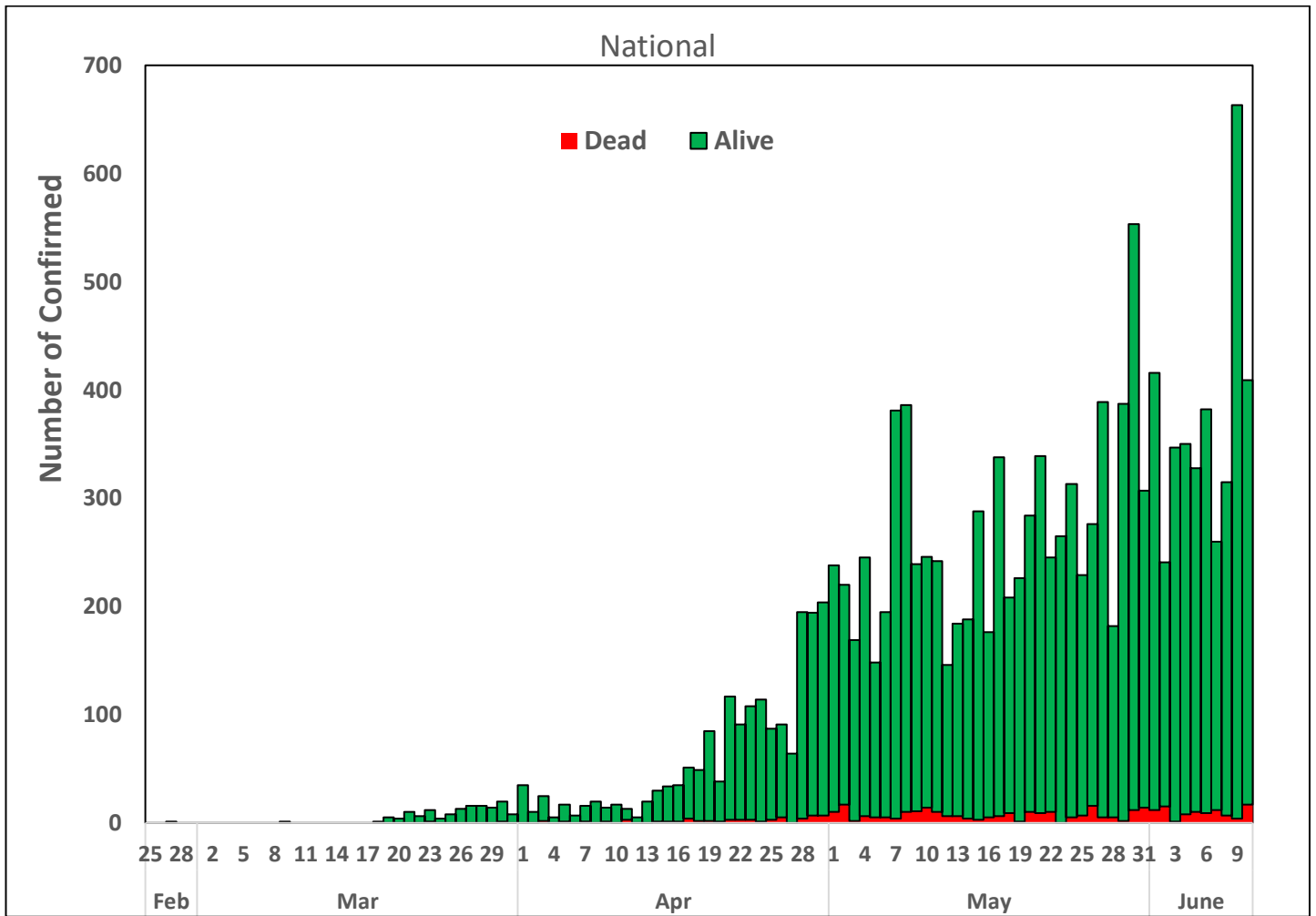
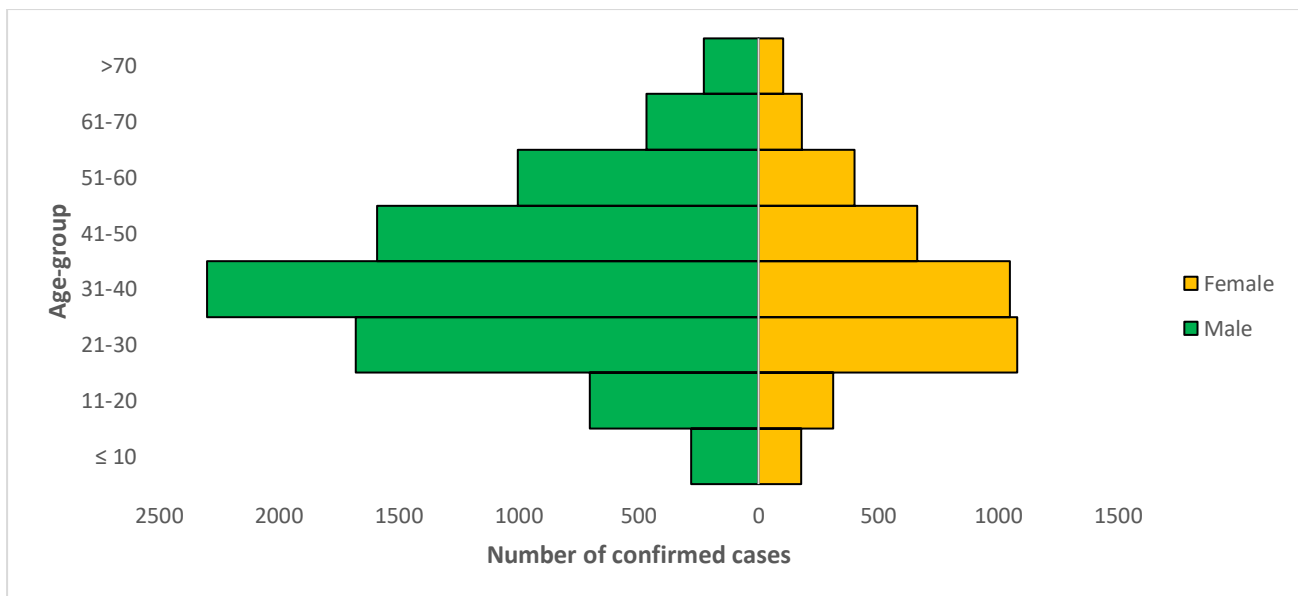


Figure 3: Age-Sex Distribution of Confirmed Cases (WK9 – WK24)



PREPAREDNESS

Since the confirmation of the first case on 27th February 2020, the NCDC has released advisories and statements to help Nigerians and affected groups in particular to respond to the pandemic

- NCDC and the Department of Hospital Services (Federal Ministry of Health) have updated the [case management guidelines](#) (version 3) with reviewed changes such as the discharge criteria and medication being used for the treatment of cases
- Guidelines have been issued for the [safe transportation of remains of persons suspected or confirmed to have died of COVID-19](#)
- Information on diagnostics of the COVID-19 virus can be found in our [detailed FAQ document](#).
- To increase our testing capacity, NCDC has issued guidelines for the [integration of private labs](#).
- Guidelines for [businesses and employers](#) have been updated.
- NCDC has updated its [case definition](#) , [community case definition](#) and [case management guide](#).
- NCDC releases periodic [public health advisories](#) to Nigerians on the COVID-19 disease.
- To adhere to post-lockdown measures, NCDC has released an [advisory on the use of face masks](#), as well as information on the [Use of Cloth face masks](#) and [how to make your cloth face masks](#).
- NCDC has released guidelines for the [management of pregnant women and nursing mothers](#) during the pandemic.
- To address burials of loved ones who die from COVID-19, guidelines have been issued to advise on the [management of dead bodies](#).
- NCDC has released a [Self-Isolation and Quarantine Guide](#) and [Mandatory institutional guideline for returnees to Nigeria](#) to help those who are exposed to COVID-19 confirmed cases or returnees to Nigeria.
- For health centres managing cases, the following documents have been released- a guideline for the [Rational Use of Personal Protective Equipment in the care of COVID-19 cases](#).
- As part of plans to increase the testing capacity of the country, the NCDC published a [National Strategy to Scale Up Access to Coronavirus Disease Testing in Nigeria](#) document.
- The Presidential Task Force has published policies and announcements on COVID-19 [available on the website of the Presidency](#) – including presidential addresses, task force updates and information on livelihood and economic support.

RESPONSE

On 28th February 2020, a multi-sectoral Emergency Operations Centre (EOC) was activated at Level 3 – the highest emergency level in Nigeria –led by NCDC in close coordination with the State Public Health EOCs (PHEOC).

- **Intensified tracking of daily sample collection by States for testing and resolve data discrepancies on SORMAS**
- **Sensitisation workshop on COVID-19 IPC for Healthcare workers from Public and Private Hospitals in FCT**
- **Supervision of IPC activities in Katsina State Internally Displaced Persons(IDP) camps and Treatment Centres (TCs) across the country**
- **3 additional labs activated in Akwa Ibom, Jigawa and Oyo State**
- **Ongoing optimisation of laboratories in Abia, Ekiti, Gombe, Kwara and Ondo States**
- **Commenced planning for targeted community sensitisation activities in 20 high burden local Government Areas (LGAs)**
- **New lab activated in Oyo State- Biorepository and Clinical Virology, University College Hospital (UCH) Ibadan**
- **Ongoing daily monitoring of 305 returnees/evacuees, 268 from China and 37 from other countries in Abuja**
- **Deployment of response supplies to all treatment centres, Teaching Hospitals, Federal Medical Centres and State Ministries of Health in the North East geopolitical zone**
- **Ongoing review of strategy for community engagement with all stakeholders and partners**
- **All education materials can be found via www.covid19.ncdc.gov.ng**