

COVID-19 SITUATION REPORT

SITUATION REPORT 213

Monday, 28th September 2020



DATA AS REPORTED AND ACCURATE BY NCDC AS AT MIDNIGHT 28TH SEPTEMBER 2020

HIGHLIGHTS

- One hundred and thirty-six (**136**) confirmed cases were reported in the last 24 hours from **13** states – Lagos (71), Rivers (23), Plateau (12), Adamawa (6), Oyo (6), Kaduna (5), Abia (3), FCT (3), Katsina (2), Kwara (2), Bauchi (1), Borno (1) and Edo (1).
- One hundred and one (**101**) discharges have been reported in the last 24 hours in **nine** states – Plateau (29), Abia (25), Kaduna (20), Rivers (17), FCT (3), Akwa Ibom (2), Borno (2), Katsina (2) and Bayelsa (1).
- **Three** deaths were reported in the last 24 hours in **three** states – Adamawa (1), Kaduna (1) and Oyo (1).
- All **36** states in Nigeria, and the FCT, have reported a confirmed case.

SITUATION UPDATES

Total (New in the last 24 hours)

SAMPLES TESTED

509,555 (2,549)¹

CONFIRMED CASES

58,460 (136)

AFFECTED STATES INCLUDING FCT

37

DISCHARGED CASES

49,895 (101)

CONFIRMED FATALITIES

1,111 (3) – 1.9% CFR

DEMOGRAPHICS

MALE – 37,190 (64%)

FEMALE – 21,270 (36%)

MOST AFFECTED AGE GROUP

31 - 40 (27%)

PERSONS OF INTEREST

27,594 (Total)

25,303 (91.7% - Exceeded Follow Up)

PROVENANCE

TRAVEL HISTORY – 991 (1.7%)

CONTACTS – 15,520 (26.7%)

UNKNOWN EXPOSURE – 41,949 (71.6%)

GLOBAL UPDATES

TOTAL NUMBER OF CASES

33,034,598 (996,342 deaths)

COUNTRIES & TERRITORIES AFFECTED

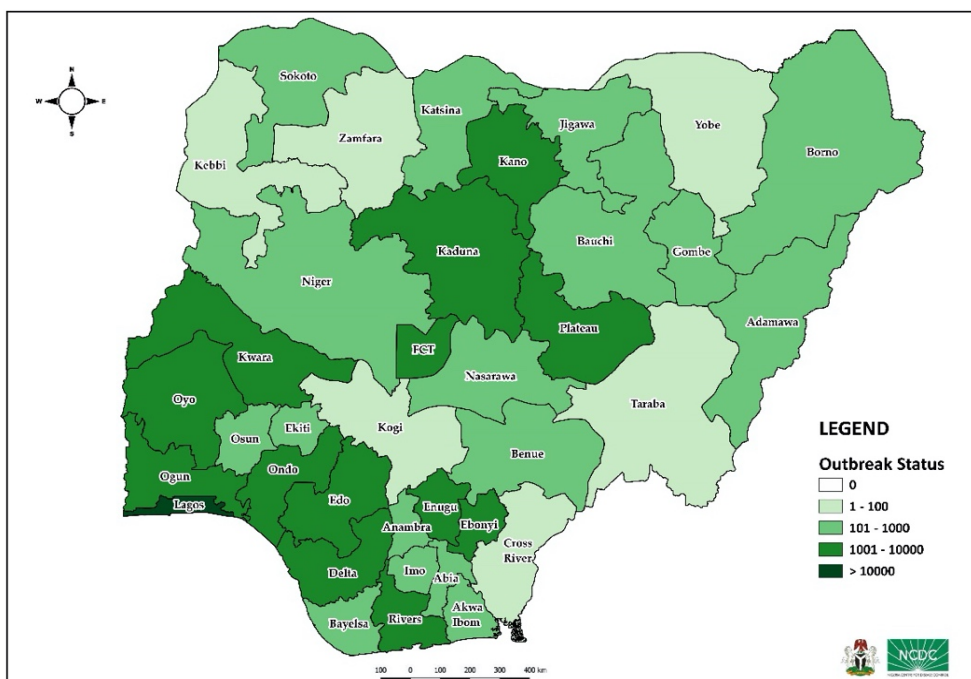
216*

¹Includes 231 travel tests from FCT and 54 Gene lab Lagos travel data

*Excluding the 2 International Conveyance

STATE OF THE NATION

Figure 1: Map of Nigeria showing 36 states and FCT affected by COVID-19



GENERAL FACT SHEET – DATA AS AT 28TH SEPTEMBER 2020

Table 1: States with reported laboratory-confirmed COVID-19 cases, recoveries, deaths and days since last reported case.

STATES	CONFIRMED CASES		DISCHARGED CASES		DEATHS		TOTAL ACTIVE CASES	DAYS SINCE LAST REPORTED CASE
	TOTAL	NEW	TOTAL	NEW	TOTAL	NEW		
Lagos	19,310	71	15,246	0	204	0	3,860	0
FCT	5,677	3	4,965	3	78	0	634	0
Plateau	3,400	12	2,572	29	33	0	795	0
Oyo	3,260	6	2,336	0	40	1	884	0
Edo	2,625	1	2,495	0	107	0	23	0
Kaduna	2,402	5	2,313	20	39	1	50	0
Rivers	2,370	23	2,229	17	59	0	82	0
Ogun	1,836	0	1,727	0	28	0	81	1
Delta	1,802	0	1,652	0	49	0	101	2
Kano	1,737	0	1,661	0	54	0	22	3
Ondo	1,631	0	1,545	0	36	0	50	1
Enugu	1,289	0	1,166	0	21	0	102	3
Ebonyi	1,040	0	1,007	0	30	0	3	2
Kwara	1,034	2	955	0	25	0	54	0
Abia	894	3	872	25	8	0	14	0
Gombe	864	0	742	0	25	0	97	3
Katsina	859	2	835	2	24	0	0	0
Osun	827	0	788	0	17	0	22	2
Borno	742	1	705	2	36	0	1	0
Bauchi	699	1	668	0	14	0	17	0
Imo	568	0	271	0	12	0	285	1
Benue	481	0	413	0	10	0	58	3
Nasarawa	449	0	325	0	13	0	111	6
Bayelsa	398	0	372	1	21	0	5	2
Jigawa	325	0	308	0	11	0	6	3
Ekiti	321	0	297	0	6	0	18	2
Akwa Ibom	288	0	274	2	8	0	6	11
Niger	259	0	232	0	12	0	15	6
Adamawa	240	6	198	0	17	1	25	0
Anambra	237	0	213	0	19	0	5	4
Sokoto	162	0	144	0	17	0	1	3
Taraba	95	0	73	0	6	0	16	17
Kebbi	93	0	84	0	8	0	1	31
Cross River	87	0	74	0	9	0	4	4
Zamfara	78	0	73	0	5	0	0	39
Yobe	76	0	62	0	8	0	6	2
Kogi	5	0	3	0	2	0	0	87
Total	58,460	136	49,895	101	1,111	3	7,454	

States, including FCT, are arranged in descending order by number of total confirmed cases and then alphabetical order

SELECTED CHARTS

Figure 2: Daily Epidemic Curve of Confirmed Cases (WK9 – WK40)

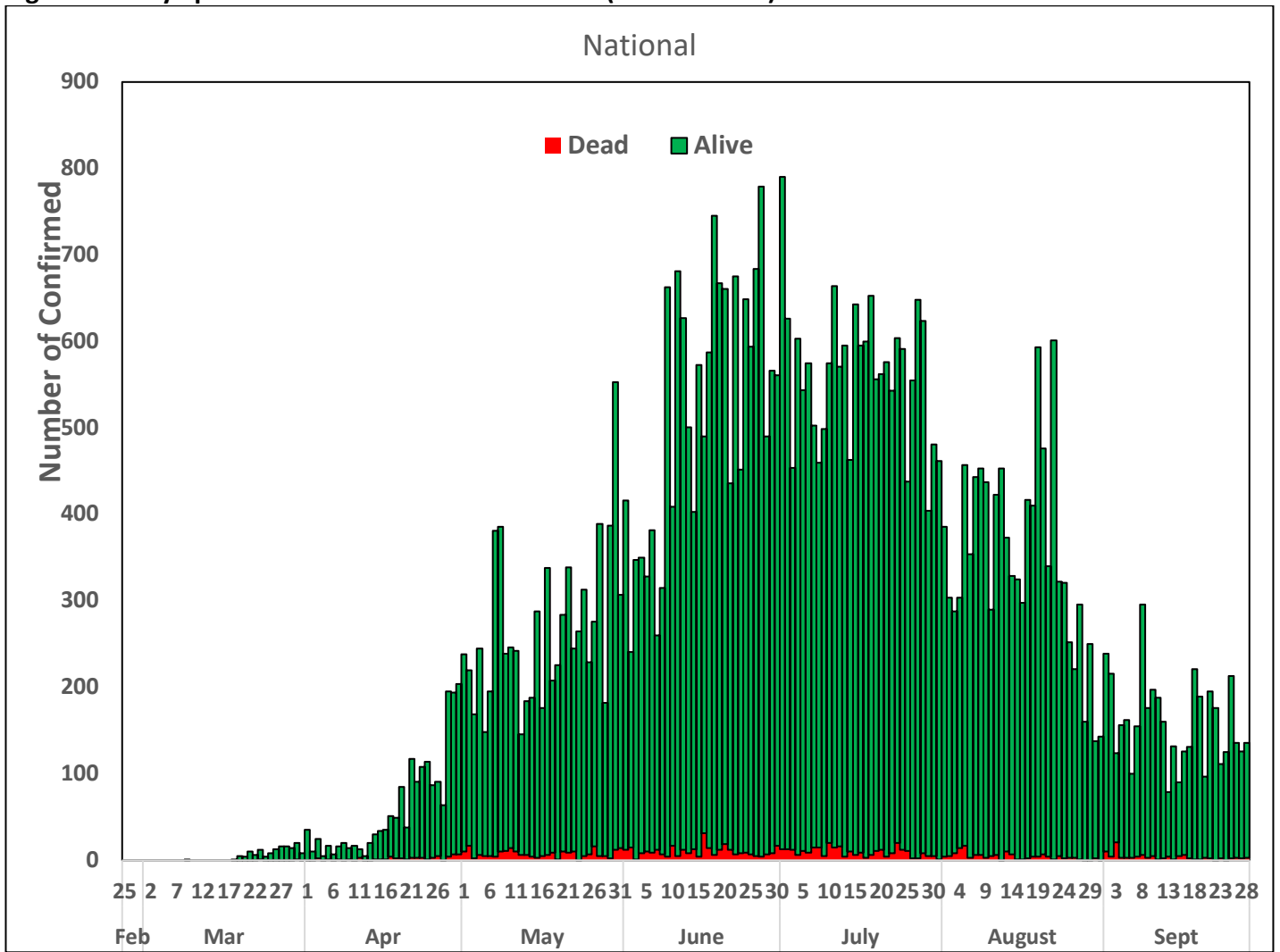
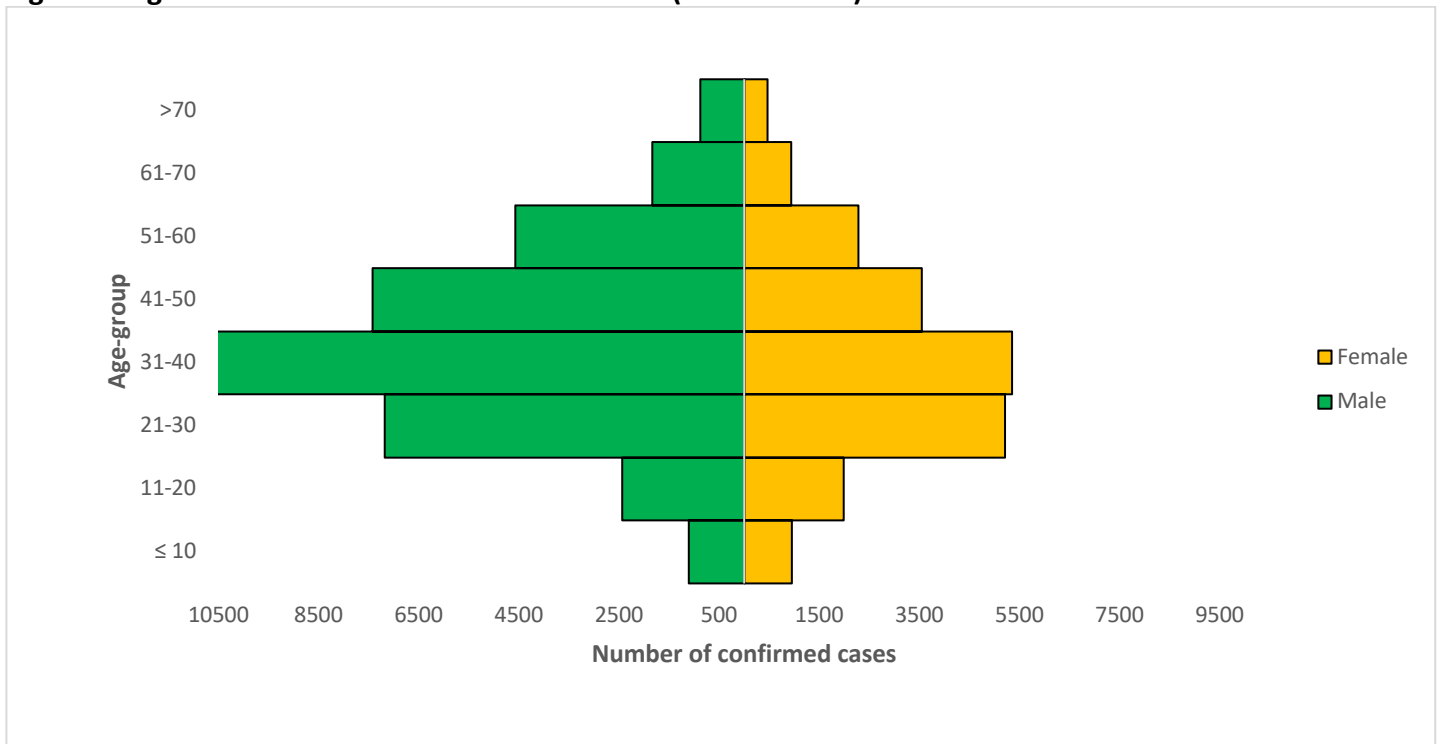


Figure 3: Age-Sex Distribution of Confirmed Cases (WK9 – WK40)



PREPAREDNESS

Since the confirmation of the first case on 27th February 2020, the NCDC has released advisories and statements to help Nigerians and affected groups in particular to respond to the pandemic

- NCDC published second interim guidance – Infection Prevention and Control: [Recommendations during health care provision for suspected and confirmed cases of COVID-19](#)
- NCDC recently published the first edition of a quick reference guide on setting up sample collection centre - [A step by step guide on setting up a sample collection centre](#)
- NCDC has launched an online course on [Infection, Prevention and Control \(IPC\) for COVID-19](#) NCDC eLearning platform
- Ahead of forthcoming elections in the country, NCDC has issued [Guidelines for Conducting Elections During the COVID-19 Outbreak in Nigeria](#).
- To protect our elders, and those with pre-existing medical conditions, NCDC has issued an [Advisory for Vulnerable Groups](#).
- NCDC has released [guidelines on the re-opening of places for worship](#).
- NCDC has released [Strategies to Improve Surveillance for COVID-19 Guidance for States](#)
- The Nigeria Police Force has released COVID-19 operational guidelines for the [Police and other Law Enforcement Agencies in Nigeria](#)
- Guidelines have been issued for the [safe transportation of remains of persons suspected or confirmed to have died of COVID-19](#)
- Information on diagnostics of the COVID-19 virus can be found in our [detailed FAQ document](#).
- To increase our testing capacity, NCDC has issued guidelines for the [integration of private labs](#).
- Guidelines for [businesses and employers](#) have been updated.
- NCDC has updated its [case definition](#) , [community case definition](#) and [case management guide](#).
- NCDC releases periodic [public health advisories](#) to Nigerians on the COVID-19 disease.
- To adhere to post-lockdown measures, NCDC has released an [advisory on the use of face masks](#), as well as information on the [Use of Cloth face masks](#) and [how to make your cloth face masks](#).
- NCDC has released guidelines for the [management of pregnant women and nursing mothers](#) during the pandemic.
- To address burials of loved ones who die from COVID-19, guidelines have been issued to advise on the [management of dead bodies](#).
- For health centres managing cases, the following documents have been released- a guideline for the [Rational Use of Personal Protective Equipment in the care of COVID-19 cases](#).
- As part of plans to increase the testing capacity of the country, the NCDC published a [National Strategy to Scale Up Access to Coronavirus Disease Testing in Nigeria](#) document.
- The Presidential Task Force has published policies and announcements on COVID-19 [available on the website of the Presidency](#) – including presidential addresses, task force updates and information on livelihood and economic support.

RESPONSE

On 28th February 2020, a multi-sectoral Emergency Operations Centre (EOC) was activated at Level 3 – the highest emergency level in Nigeria –led by NCDC in close coordination with the State Public Health EOCs (PHEOC).

- **Provided technical support for the commencement of digitisation of negative laboratory results in Oyo, Ogun, Osun, Ekiti and Ondo States**
- **Optimised Polymerase Chain Reaction (PCR) laboratory for testing in Shell hospital Warri, Delta State**

- **Trained 1,150 Proprietary Patent Medicine Vendors (PPMV) and community pharmacists from 23 LGAs on Infection Prevention and Control (IPC) in Kaduna State**
- Trained 1013 Community workers and Proprietary Patent Medicine Vendors (PPMV) from 14 LGAs on IPC measures in Kwara State
- All education materials can be found via www.covid19.ncdc.gov.ng