

# RUBELLA SITUATION REPORT

Serial Number 02

Data as at July 31st 2020



## HIGHLIGHTS

- In this reporting month, two IgM positive cases were reported from 2 (4.5%) LGAs, one each from Abia and Imo State
- **From January to July, 2020:**
  - A total of 728 rubella IgM+ cases were reported from 266 (34.4%) LGAs across 33 states and FCT
  - Enugu (122), Imo (51), Rivers (49), Cross River (39), Delta (37), Ekiti (31), Abia (30) and Anambra (33) accounted for 53.4% of all rubella IgM+ cases reported
  - The agegroup <15 years accounted for 683 (93.8%) rubella IgM+ cases
  - A total of 3 deaths (CFR = 0.4%) were recorded among rubella IgM+ cases
- **Rubella Outbreaks from January to July, 2020:**
  - Out of the 136 LGAs that reported rubella outbreak, Enugu (12), Imo (11), Rivers (11) and Cross Rivers (10) accounted for 32.4%
- **Congenital Rubella Syndrome (CRS) Cases:**
  - No suspected case was reported in the month of June
  - From January to June 2020, nine suspected CRS cases were reported from two of the four sentinel sites (JUTH and UNTH)
  - Two out of the nine suspected cases were laboratory-confirmed CRS cases

## SITUATION UPDATES

Total (New in this month)

### CASES TESTED FOR RUBELLA

**3,683 (97)**

### LAB CONFIRMED CASES

**728 (2)**

States With Confirmed Cases  
**33 + FCT (0)**

LGAs with Confirmed Cases  
**266 (1)**

### DEATHS AMONG LAB CONFIRMED CASES

**3 (0)**

### STATES WITH OUTBREAK

**30 + FCT (0)**

### LGAs WITH OUTBREAK

**136 (1)**

### SUSPECTED CONGENITAL RUBELLA SYNDROME CASES

**9 (0)**

### CONFIRMED CONGENITAL RUBELLA SYNDROME CASES

**2 (0)**



**Table 1: Rubella cases by state, Jan – Jul, 2020**

States	# Suspected Measles Cases Tested	Result of Cases Tested n(%)			Rubella IgM+ Incidence (Per Million Population)
		# Rubella IgM +	# Measles IgM +	# Non-Measles/ Non-Rubella	
<b>NORTH</b>	<b>3,133</b>	<b>167 (5.3%)</b>	<b>1,470 (46.9%)</b>	<b>928 (29.6%)</b>	<b>1.4</b>
Adamawa	423	26 (6.1%)	212 (50.1%)	69 (16.3%)	5.5
Bauchi	6	0 (0.0%)	4 (66.7%)	0 (0.0%)	0.0
Benue	79	11 (13.9%)	23 (29.1%)	34 (43.0%)	1.7
Borno	170	0 (0.0%)	68 (40.0%)	33 (19.4%)	0.0
FCT, Abuja	35	5 (14.3%)	15 (42.9%)	9 (25.7%)	1.0
Gombe	95	15 (15.8%)	32 (33.7%)	16 (16.8%)	4.1
Jigawa	401	11 (2.7%)	160 (39.9%)	129 (32.2%)	1.7
Kaduna	100	5 (5.0%)	63 (63.0%)	27 (27.0%)	0.5
Kano	69	2 (2.9%)	44 (63.8%)	17 (24.6%)	0.1
Katsina	384	20 (5.2%)	226 (58.9%)	105 (27.3%)	2.3
Kebbi	457	21 (4.6%)	187 (40.9%)	187 (40.9%)	4.2
Kogi	106	9 (8.5%)	42 (39.6%)	30 (28.3%)	1.8
Kwara	70	1 (1.4%)	25 (35.7%)	29 (41.4%)	0.3
Nasarawa	82	19 (23.2%)	19 (23.2%)	38 (46.3%)	6.7
Niger	193	4 (2.1%)	116 (60.1%)	58 (30.1%)	0.6
Plateau	78	10 (12.8%)	19 (24.4%)	24 (30.8%)	2.2
Sokoto	101	3 (3.0%)	54 (53.5%)	32 (31.7%)	0.5
Taraba	91	2 (2.2%)	36 (39.6%)	31 (34.1%)	0.6
Yobe	123	3 (2.4%)	92 (74.8%)	27 (22.0%)	0.8
Zamfara	70	0 (0.0%)	33 (47.1%)	33 (47.1%)	0.0
<b>SOUTH</b>	<b>3,097</b>	<b>561 (18.1%)</b>	<b>629 (20.3%)</b>	<b>1,748 (57.5%)</b>	<b>5.6</b>
Abia	173	30 (17.3%)	37 (21.4%)	101 (58.4%)	7.3
Akwa Ibom	151	24 (15.9%)	50 (33.1%)	72 (47.7%)	3.8
Anambra	153	30 (19.6%)	20 (13.1%)	80 (52.3%)	4.9
Bayelsa	102	15 (14.7%)	26 (25.5%)	56 (54.9%)	5.9
Cross River	136	39 (28.7%)	23 (16.9%)	69 (50.7%)	9.0
Delta	252	37 (14.7%)	73 (29.0%)	136 (54.0%)	5.8
Ebonyi	74	29 (39.2%)	19 (25.7%)	24 (32.4%)	9.1
Edo	66	12 (18.2%)	10 (15.2%)	44 (66.7%)	2.6
Ekiti	292	31 (10.6%)	23 (7.9%)	231 (79.1%)	8.5
Enugu	237	122 (51.5%)	24 (10.1%)	83 (35.0%)	24.8
Imo	168	51 (30.4%)	26 (15.5%)	74 (44.0%)	8.3
Lagos	214	28 (13.1%)	18 (8.4%)	159 (74.3%)	2.0
Ogun	183	6 (3.3%)	70 (38.3%)	99 (54.1%)	1.0
Ondo	111	16 (14.4%)	18 (16.2%)	72 (64.9%)	3.1
Osun	331	26 (7.9%)	76 (23.0%)	190 (57.4%)	4.9
Oyo	277	16 (5.8%)	79 (28.5%)	177 (63.9%)	1.8
Rivers	177	49 (27.7%)	37 (20.9%)	81 (45.8%)	5.9
<b>NATIONAL</b>	<b>6,230</b>	<b>728 (11.7%)</b>	<b>2,099 (33.7%)</b>	<b>2,676 (43.0%)</b>	<b>3.4</b>

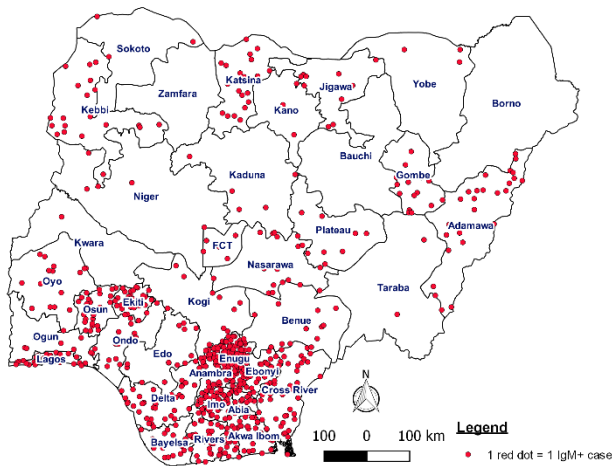


Figure 1a: Distribution of rubella IgM+ cases by state in Nigeria, Jan – Jul, 2020

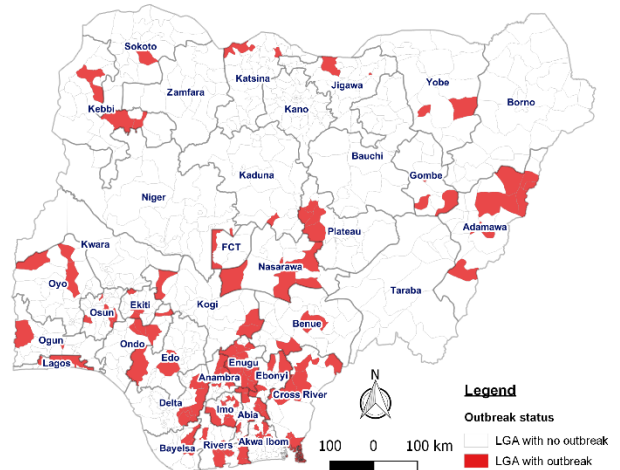


Figure 1b: Distribution of LGA's with rubella outbreak in Nigeria, Jan – Jul, 2020

Table 2: Summary of key rubella surveillances variables, Jan - Jul, 2018 – 2020

Description of Variables	2018 (Jan – Jul)	2019 (Jan – Jul)	2020 (Jan – Jul)
Number of suspected measles samples tested	7,217	9,260	6,230
<ul style="list-style-type: none"> <li>Number of measles IgM+ cases</li> </ul>	980 (13.6%)	2,073 (22.4%)	2,099 (33.7%)
<ul style="list-style-type: none"> <li>Number of rubella IgM+ cases</li> </ul>	346 (4.8%)	1,357 (14.7%)	728 (11.7%)
<ul style="list-style-type: none"> <li>Number of non-measles/non-rubella cases</li> </ul>	2,688 (37.2%)	4,231 (45.7%)	2,676 (43.0%)
Number of LGAs with $\geq 1$ rubella IgM+ case	177	418	266
Number of states with $\geq 1$ rubella IgM+ case	30 + FCT	36 + FCT	33 + FCT
Incidence of rubella IgM+ case (per million population)	1.7	6.4	3.4

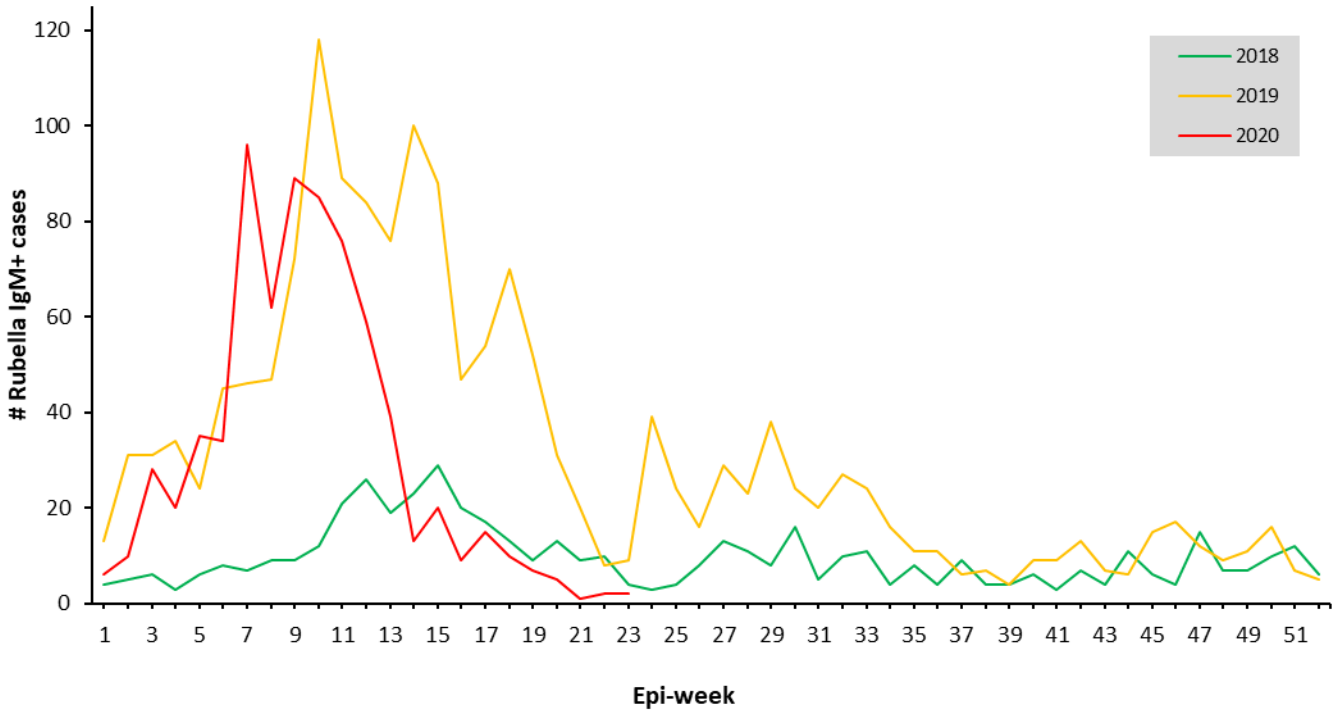


Figure 3: Trend of rubella IgM+ cases in Nigeria, 2018 – 2020 (epi-week 01 – 31)

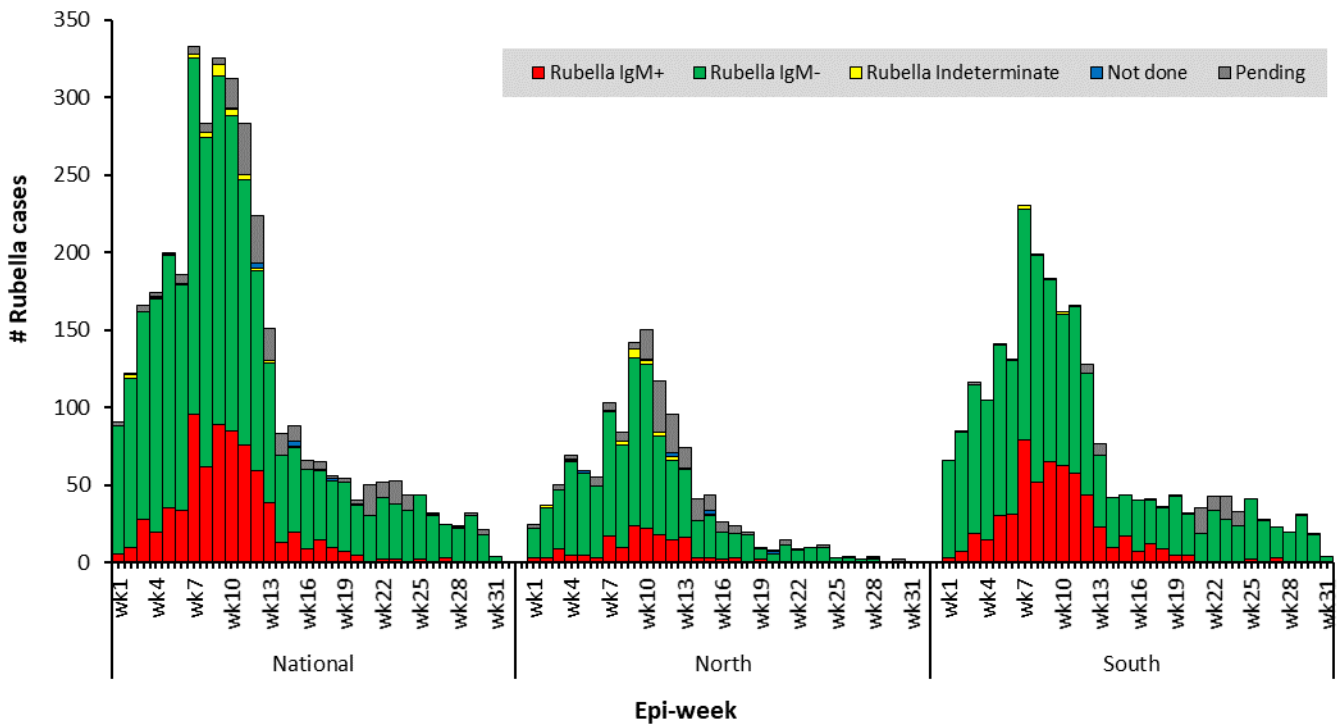


Figure 4: Epi-curve of rubella cases in Nigeria (North & South), epi-week 01 - 31, 2020

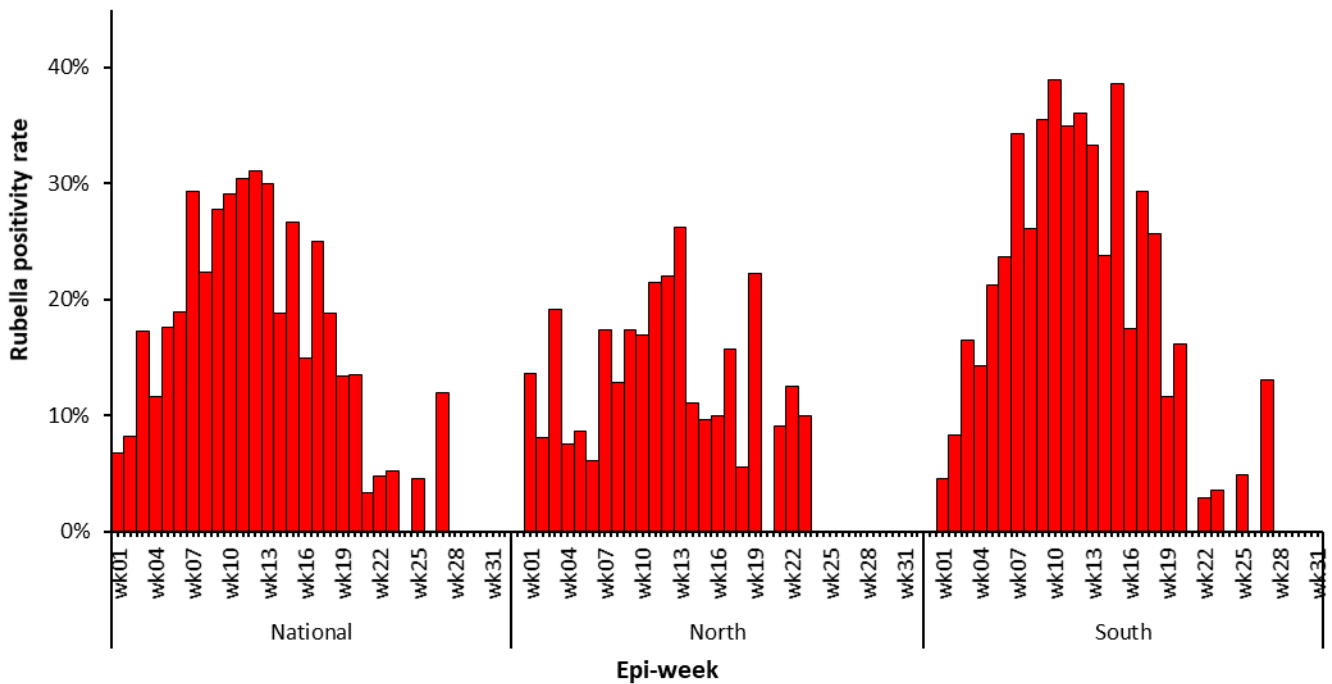


Figure 5: Epi-curve of rubella positivity rate (proportion of samples tested for rubella that are rubella IgM+) in Nigeria (North & South), epi-week 01 - 31, 2020

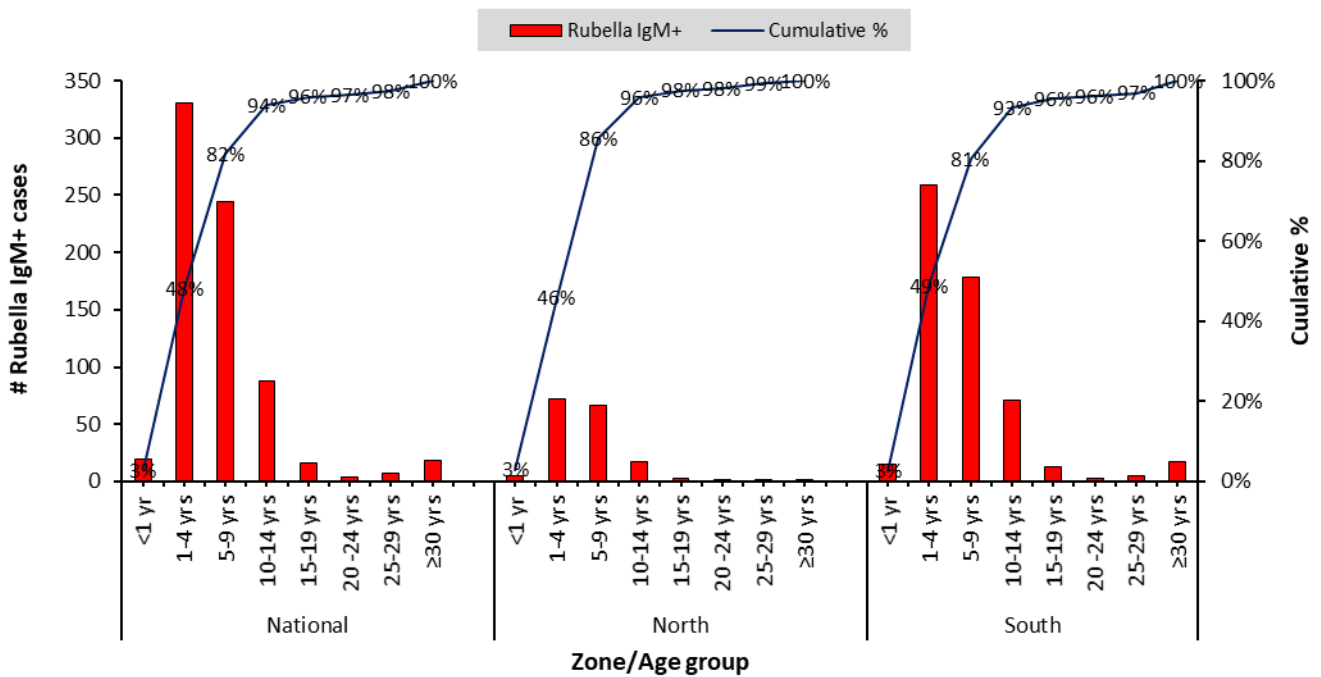


Figure 5: Age distribution of rubella IgM+ cases in Nigeria (North & South), Jan – Jul, 2020