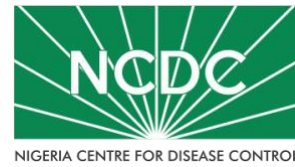


# COVID-19 SITUATION REPORT

## SITUATION REPORT 145

Wednesday, 22<sup>nd</sup> July 2020



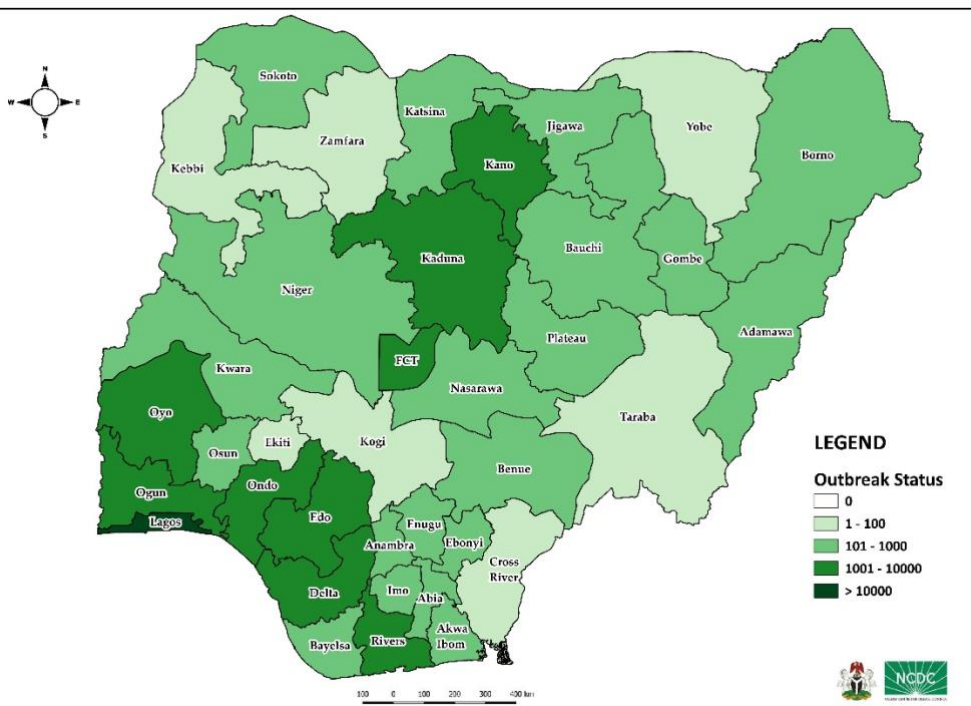
DATA AS REPORTED AND ACCURATE BY NCDC AS AT MIDNIGHT 22<sup>ND</sup> JULY 2020

### HIGHLIGHTS

- Five hundred and forty-three (**543**) confirmed cases were reported in the last 24 hours from **15** states – Lagos (180), FCT (86), Kaduna (56), Edo (47), Ondo (37), Kwara (35), Ogun (19), Rivers (19), Kano (17), Ebonyi (16), Enugu (16), Delta (7), Bayelsa (4), Bauchi (3) and Abia (1).
- One hundred and thirty-eight (**138**) cases were discharged in the last 24 hours in **ten** states – FCT (34), Kano (27), Edo (25), Ogun (17), Rivers (12), Kaduna (8), Bayelsa (5), Gombe (5), Ebonyi (4) and Anambra (1).
- **Eight** deaths were recorded in the last 24 hours in **four** states – Edo (4), Ebonyi (2), Abia (1) and FCT (1).
- All **36** states in Nigeria, and the FCT, have reported a confirmed case.

### STATE OF THE NATION

Figure 1: Map of Nigeria showing 36 states and FCT affected by COVID-19



### SITUATION UPDATES

Total (New in the last 24 hours)

SAMPLES TESTED

**251,893 (4068)**

CONFIRMED CASES

**38,344 (543)**

AFFECTED STATES INCLUDING FCT

**37**

DISCHARGED CASES

**15,815 (138)**

CONFIRMED FATALITIES

**813 (8) – 2.1% CFR**

DEMOGRAPHICS

MALE – 24,738 (65%)

FEMALE – 13,606 (35%)

MOST AFFECTED AGE GROUP

31 - 40 (25%)

PERSONS OF INTEREST

**11,077 (Total)**

**10,902 (98.4% - Exceeded Follow Up)**

PROVENANCE

TRAVEL HISTORY – 719 (2%)

CONTACTS – 9,489 (25%)

UNKNOWN EXPOSURE – 28,136 (73%)

GLOBAL UPDATES

TOTAL NUMBER OF CASES

**14,765,256 (612,054 deaths)**

COUNTRIES & TERRITORIES AFFECTED\*

**213**

\*Excluding the 2 International Conveyance

## GENERAL FACT SHEET – DATA AS AT 22<sup>nd</sup> JULY 2020

Table 1: States with reported laboratory-confirmed COVID-19 cases, recoveries, deaths, and days since last reported case

STATES	CONFIRMED CASES		DISCHARGED CASES		DEATHS		TOTAL ACTIVE CASES	DAYS SINCE LAST REPORTED CASE
	CUMULATIVE	NEW	CUMULATIVE	NEW	CUMULATIVE	NEW		
Lagos	13,806	180	1,993	0	177	0	11,636	0
FCT	3,297	86	977	34	40	1	2,280	0
Oyo	2,219	0	1,120	0	20	0	1,079	1
Edo	2,064	47	1,325	25	72	4	667	0
Rivers	1,565	19	1,051	12	49	0	465	0
Kano	1,447	17	1,152	27	53	0	242	0
Delta	1,444	7	634	0	39	0	771	0
Kaduna	1,267	56	939	8	12	0	316	0
Ogun	1,203	19	917	17	23	0	263	0
Ondo	1,001	37	143	0	22	0	836	0
Plateau	762	0	349	0	18	0	395	1
Enugu	721	16	371	0	17	0	333	0
Ebonyi	715	16	576	4	20	2	119	0
Katsina	713	0	441	0	23	0	249	1
Kwara	707	35	188	0	14	0	505	0
Borno	603	0	521	0	35	0	47	1
Gombe	558	0	515	5	23	0	20	2
Bauchi	534	3	506	0	13	0	15	0
Abia	527	1	391	0	4	1	132	0
Imo	454	0	87	0	9	0	358	1
Osun	359	0	155	0	10	0	194	1
Bayelsa	326	4	205	5	21	0	100	0
Jigawa	322	0	308	0	11	0	3	6
Benue	294	0	53	0	6	0	235	2
Nasarawa	289	0	113	0	8	0	168	1
Akwa Ibom	176	0	121	0	3	0	52	3
Niger	166	0	112	0	9	0	45	2
Sokoto	153	0	137	0	16	0	0	18
Anambra	132	0	68	1	12	0	52	2
Adamawa	115	0	85	0	9	0	21	4
Kebbi	90	0	74	0	7	0	9	1
Ekiti	86	0	47	0	2	0	37	3
Zamfara	77	0	71	0	5	0	1	4
Yobe	64	0	53	0	8	0	3	4
Taraba	54	0	11	0	0	0	43	1
Cross River	29	0	3	0	1	0	25	1
Kogi	5	0	3	0	2	0	0	19
<b>Total</b>	<b>38,344</b>	<b>543</b>	<b>15,815</b>	<b>138</b>	<b>813</b>	<b>8</b>	<b>21,716</b>	

States, including FCT, are arranged in descending order by number of total confirmed cases and then alphabetical order

## SELECTED CHARTS

Figure 2: Daily Epidemic Curve of Confirmed Cases (WK9 – WK30)

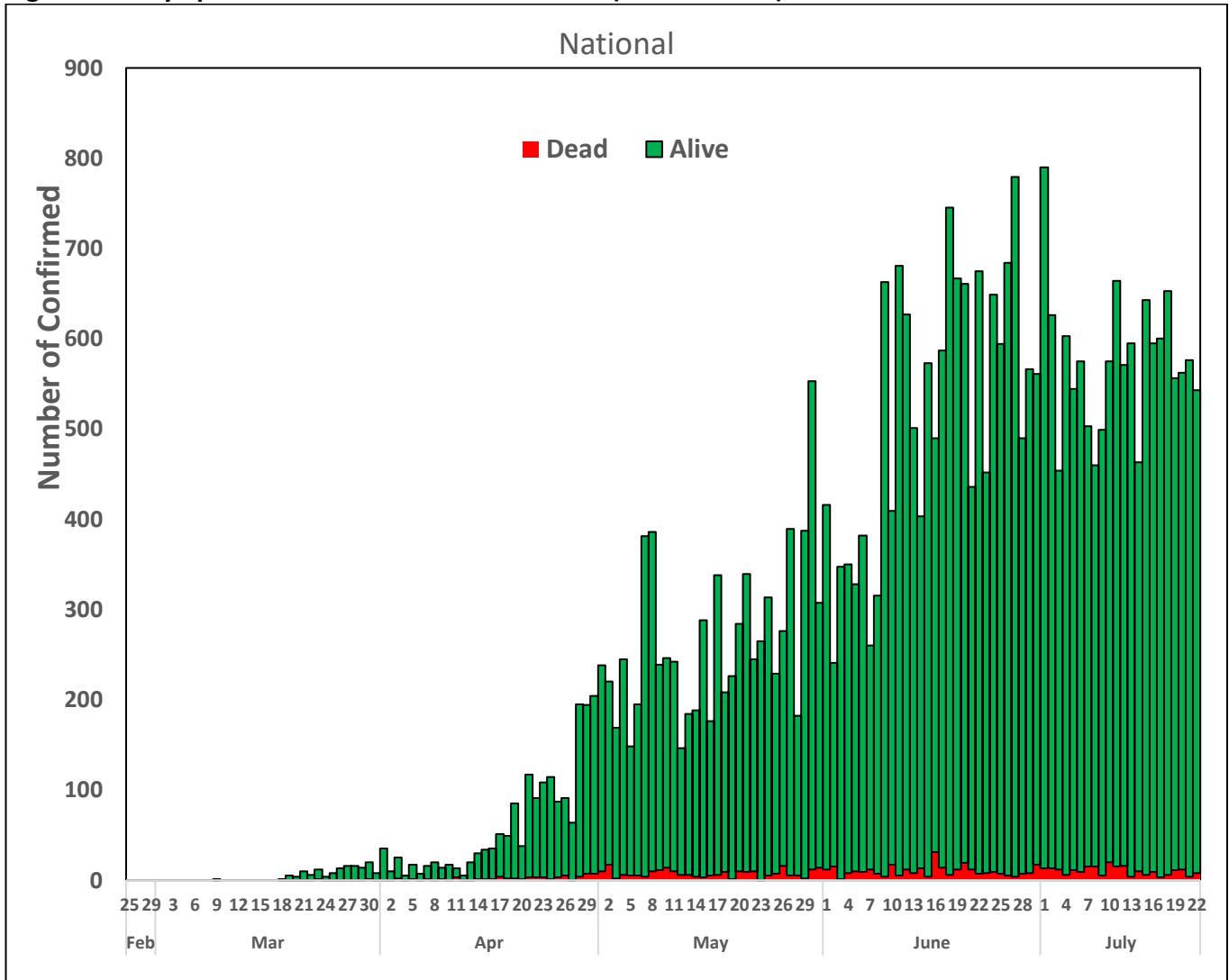
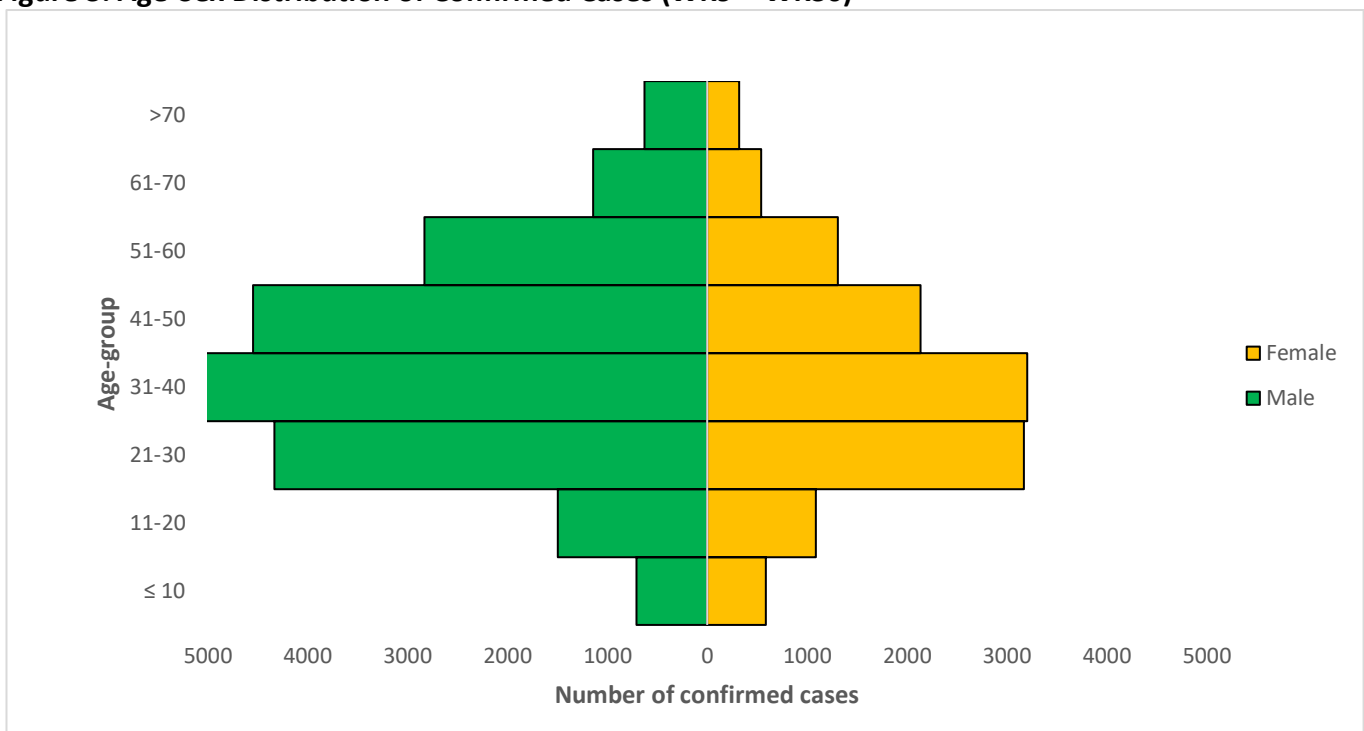


Figure 3: Age-Sex Distribution of Confirmed Cases (WK9 – WK30)



## PREPAREDNESS

Since the confirmation of the first case on 27<sup>th</sup> February 2020, the NCDC has released advisories and statements to help Nigerians and affected groups in particular to respond to the pandemic

- NCDC has launched an online course on [Infection, Prevention and Control \(IPC\) for COVID-19](#) NCDC eLearning platform
- Ahead of forthcoming elections in the country, NCDC has issued [Guidelines for Conducting Elections During the COVID-19 Outbreak in Nigeria](#).
- To protect our elders, and those with pre-existing medical conditions, NCDC has issued an [Advisory for Vulnerable Groups](#).
- NCDC has released [guidelines on the re-opening of places for worship](#).
- The Nigeria Police Force has released COVID-19 operational guidelines for the [Police and other Law Enforcement Agencies in Nigeria](#)
- NCDC and the Department of Hospital Services (Federal Ministry of Health) have updated the [case management guidelines](#) (version 3) with reviewed changes such as the discharge criteria and medication being used for the treatment of cases
- Guidelines have been issued for the [safe transportation of remains of persons suspected or confirmed to have died of COVID-19](#)
- Information on diagnostics of the COVID-19 virus can be found in our [detailed FAQ document](#).
- To increase our testing capacity, NCDC has issued guidelines for the [integration of private labs](#).
- Guidelines for [businesses and employers](#) have been updated.
- NCDC has updated its [case definition](#) , [community case definition](#) and [case management guide](#).
- NCDC releases periodic [public health advisories](#) to Nigerians on the COVID-19 disease.
- To adhere to post-lockdown measures, NCDC has released an [advisory on the use of face masks](#), as well as information on the [Use of Cloth face masks](#) and [how to make your cloth face masks](#).
- NCDC has released guidelines for the [management of pregnant women and nursing mothers](#) during the pandemic.
- To address burials of loved ones who die from COVID-19, guidelines have been issued to advise on the [management of dead bodies](#).
- For health centres managing cases, the following documents have been released- a guideline for the [Rational Use of Personal Protective Equipment in the care of COVID-19 cases](#).
- As part of plans to increase the testing capacity of the country, the NCDC published a [National Strategy to Scale Up Access to Coronavirus Disease Testing in Nigeria](#) document.
- The Presidential Task Force has published policies and announcements on COVID-19 [available on the website of the Presidency](#) – including presidential addresses, task force updates and information on livelihood and economic support.

## RESPONSE

On 28<sup>th</sup> February 2020, a multi-sectoral Emergency Operations Centre (EOC) was activated at Level 3 – the highest emergency level in Nigeria –led by NCDC in close coordination with the State Public Health EOCs (PHEOC).

- **Received a total of 358 Persons of Interest (POIs)/returnees from- France (43), Canada (55), Saudi Arabia (117) and Sudan (143) on 19<sup>th</sup> July 2020 in the FCT**
- **All POIs/returnees were received, screened and given the travellers kit on arrival at the Nnamdi Azikiwe International Airport Abuja (NAIA)**
- **All returnees were issued COVID-19 test appointment**
- **Completed the first batch of 12 states Training of Trainer (TOT) on contact tracing and active case search**
- **Ongoing training of laboratory personnel on testing using Abbott platform in Benue and Yobe States**
- **Ongoing planning of Training of Trainers (TOT) on community-based Infection Prevention and Control (IPC) management for COVID-19 with Lagos State**

- **Conducted training on IPC for private hospitals health workers in Lagos**
- **Distribution of Personal Protective Equipment (PPE) and response material to the North central: Niger, Nasarawa, Plateau, Benue, Kwara, Kogi States and FCT**
- Commenced the first batch of states` Training of Trainers (TOT) on contact tracing and active case search with 12 states
- Development of surveillance research workplan
- Conducted training in sample collection and packaging in Cross River, Ebonyi and the FCT
- Organised training webinar for state focal persons on risk factors for Healthcare workers in COVID-19 infection
- Shared targeted intervention template with trained participants from correctional facilities to understand their challenges
- All education materials can be found via [www.covid19.ncdc.gov.ng](http://www.covid19.ncdc.gov.ng)