



COVID-19 SITUATION REPORT

WEEKLY EPIDEMIOLOGICAL REPORT 29

Epi Week 17: 26th April – 2nd May 2021

DATA AS REPORTED AND ACCURATE BY NCDC AS AT MIDNIGHT 2ND MAY 2021

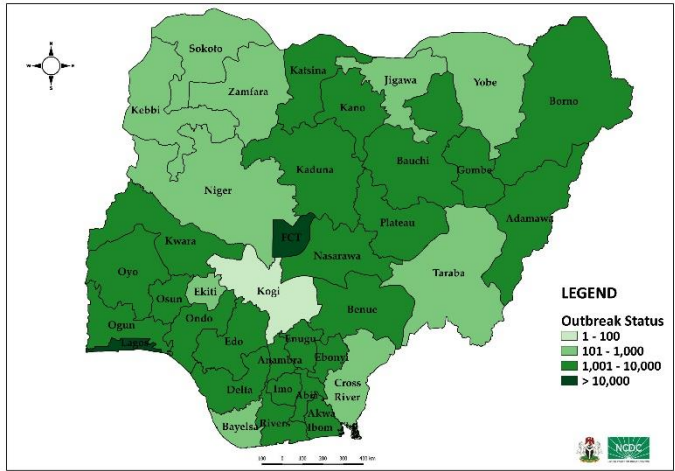
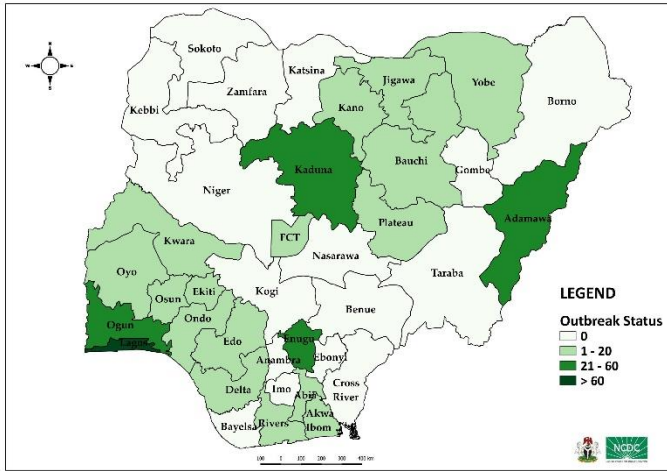


Fig 1. Distribution of cases (Epi Week 17 only)

Fig 2. Distribution of cumulative cases

HIGHLIGHTS

- In Week 17, the number of new confirmed cases decreased to **462** from **486** reported in week 16. These were reported in **20** states and FCT (Tables 1 & 2).
- In Week 17, the number of discharged cases decreased to **435** from **594** in week 16. These were reported in **13** states and FCT (Tables 1 & 3).
- The number of reported deaths in the last one week was **1 (FCT)** (Tables 1 & 4).
- Cumulatively, since the outbreak began in Week 9, 2020 there have been **165,181** confirmed cases and **2,063** deaths reported with a case fatality rate (CFR) of **1.2%** (Tables 1 & 4).
- In Week 17, the number of in-bound international travellers at Nigerian airports was **13,759** compared with **13,688** in Week 16.
- In Week 17, the number of international travellers with a positive result was **44** compared to **28** from week 16.
- Globally, the count for confirmed COVID-19 cases is **152,534,452** with **3,198,528** deaths resulting in a case fatality rate of **2.1%**.

GENERAL FACT SHEET – DATA AS AT 2ND MAY 2021

Table 1: States with reported laboratory-confirmed COVID-19 cases, recoveries, deaths, samples tested and active cases.

STATE	CONFIRMED		RECOVERIES		DEATHS		ACTIVE CASES	TESTING	
	Total	Last Week	Total	Last Week	Total	Last Week		Total	Last Week
Abia	1,690	1	1,658	0	22	0	10	22,487	200
Adamawa	1,103	40	275	1	32	0	796	19,216	383
Akwa Ibom	1,864	14	1,830	36	14	0	20	18,911	110
Anambra	1,909	0	1,826	0	19	0	64	25,080	172
Bauchi	1,549	1	1,518	0	17	0	14	25,212	15
Bayelsa	886	0	855	0	26	0	5	17,604	21
Benue	1,188	0	591	0	22	0	575	16,808	64
Borno	1,337	0	1,200	0	38	0	99	20,449	23
Cross River	394	0	376	0	18	0	0	7,065	33
Delta	2,623	3	1,744	0	71	0	808	36,738	310
Ebonyi	2,030	0	1,965	0	32	0	33	15,719	110
Edo	4,902	4	4,714	5	185	0	3	44,876	1,923
Ekiti	872	2	856	5	11	0	5	16,869	244
Enugu	2,401	56	2,013	0	29	0	359	26,946	614
FCT	19,784	19	19,095	5	166	1	523	267,204	4,853
Gombe	2,034	0	1,986	0	44	0	4	43,715	167
Imo	1,657	0	1,592	0	37	0	28	37,512	676
Jigawa	528	1	492	7	16	0	20	10,074	224
Kaduna	9,061	21	8,981	11	65	0	15	94,664	6,280
Kano	3,961	7	3,824	6	110	0	27	96,653	1,159
Katsina	2,097	0	2,049	0	34	0	14	39,668	164
Kebbi	450	0	392	0	16	0	42	17,471	243
Kogi	5	0	3	0	2	0	0	4,619	1
Kwara	3,123	3	3,062	248	55	0	6	24,825	433
Lagos	58,494	203	56,990	0	439	0	1,065	487,246	15,414
Nasarawa	2,382	0	373	0	13	0	1,996	22,990	18
Niger	930	0	913	0	17	0	0	17,799	19
Ogun	4,678	31	4,591	20	49	0	38	72,273	680
Ondo	3,248	6	2,080	0	63	0	1,105	24,705	108

STATE	CONFIRMED		RECOVERIES		DEATHS		ACTIVE CASES	TESTING	
	Total	Last Week	Total	Last Week	Total	Last Week		Total	Last Week
Osun	2,578	3	2,510	8	52	0	16	18,774	55
Oyo	6,852	2	6,721	0	124	0	7	59,975	763
Plateau	9,059	10	8,987	5	57	0	15	68,087	355
Rivers	7,114	16	7,006	55	101	0	7	187,080	3,462
Sokoto	775	0	747	0	28	0	0	18,809	4
Taraba	974	0	950	0	22	0	2	12,743	38
Yobe	409	19	375	23	9	0	25	17,668	2,752
Zamfara	240	0	221	0	8	0	11	7,919	69
Total	165,181	462	155,361	435	2,063	1	7,757	1,966,453	42,159

Test type disaggregation (last one week)

Type	Number of tests done	Percentage of tests done
PCR	41,547	98.5%
RDT	612	1.5%
TOTAL	42,159	

Test type disaggregation (cumulative)

Type	Number of tests done	Percentage of tests done
PCR	1,786,972	90.9%
RDT	179,481	9.1%
TOTAL	1,966,453	

RETURNING PASSENGERS TESTS

Over the last week, the following laboratories carried out COVID-19 tests for returning passengers:

LABORATORY

	IN-BOUND
54Gene, Abuja	294
ACOUNS Laboratory Diagnostic Center	107
AML/Ikeja, Lagos	298
Arab Labs	20
ARRIVE ALIVE, Ojuelegba, Lagos	13
BIOLOGIX	136
CLINA-LANCET laboratories, Lagos	696
CLINA-LANCET laboratories, Abuja	12
CLINIX HEALTHCARE	177
DNA labs, Abuja	97
DNA labs, Kaduna	10
DNA labs, Lagos	3
E-clinic & Diagnostics	37
EHA Clinics	184
Everight diagnostics, Abuja	57
Everight diagnostics, Imo	367
Harley and Rainbow Specialized Laboratory	37
LASUCOM Molecular Laboratory	12
LILY LAB	120
MEDBURY PCR Laboratory	422
Medicaid, Abuja	163
SYNLAB	205
The Specialist Lab	3
TOTAL	51
UNION Diagnostics	5
VCARE	252
WellMed	22
ZAINE LAB	156
Grand Total	3,956

Laboratories without reports on number of samples tested this week.

AKTH (Kano)	JUTH GX (Plateau)
GH Onitsha (Anambra)	O2 (Lagos)
UNIOSUN (Osun)	GH Takum (Taraba)
OOUTH (Ogun)	Lily Hosp (Edo)
IFAIN (Kano)	RMLM MKD (Benue)
Kaduna Mobile Truck GX (Kaduna)	SMPL (Enugu)
Lawrence Henshaw (Cross River)	MDL, (Akwa Ibom)
SSH (Kogi)	GH Minna, (Niger)
IFAIN (Kano)	BML, (Bayelsa)
CAMRET (Sokoto)	
NVRI (Plateau)	
DNA labs (Abuja)	
BUK (Kano)	
Accunalysis (Anambra)	

DAILY CONFIRMED CASES – DATA AS AT 2ND MAY 2021

Table 2: States with reported laboratory-confirmed COVID-19 cases daily over the last week

CONFIRMED CASES	WEEK 17	27 th April	28 th April	29 th April	30 th April	1 st May	2 nd May	3 rd May
	TOTAL	Monday	Tuesday	Wednesday	Thursday	Friday	Saturday	Sunday
Abia	1	0	0	0	0	0	0	1
Adamawa	40	0	40	0	0	0	0	0
Akwa Ibom	14	0	3	4	2	3	0	2
Anambra	0	0	0	0	0	0	0	0
Bauchi	1	0	0	0	0	0	1	0
Bayelsa	0	0	0	0	0	0	0	0
Benue	0	0	0	0	0	0	0	0
Borno	0	0	0	0	0	0	0	0
Cross River	0	0	0	0	0	0	0	0
Delta	3	0	0	3	0	0	0	0
Ebonyi	0	0	0	0	0	0	0	0
Edo	4	1	0	2	1	0	0	0
Ekiti	2	0	0	0	0	0	2	0
Enugu	56	0	43	13	0	0	0	0
FCT	19	0	8	3	2	1	4	1
Gombe	0	0	0	0	0	0	0	0
Imo	0	0	0	0	0	0	0	0
Jigawa	1	0	1	0	0	0	0	0
Kaduna	21	2	1	5	6	2	2	3
Kano	7	0	0	6	1	0	0	0
Katsina	0	0	0	0	0	0	0	0
Kebbi	0	0	0	0	0	0	0	0
Kogi	0	0	0	0	0	0	0	0
Kwara	3	2	0	0	0	0	0	1
Lagos	203	26	50	26	38	21	28	14
Nasarawa	0	0	0	0	0	0	0	0
Niger	0	0	0	0	0	0	0	0
Ogun	31	4	5	8	3	6	2	3

CONFIRMED CASES	WEEK 17	27 th April	28 th April	29 th April	30 th April	1 st May	2 nd May	3 rd May
	TOTAL	Monday	Tuesday	Wednesday	Thursday	Friday	Saturday	Sunday
Ondo	6	0	0	0	6	0	0	0
Osun	3	0	0	0	0	0	0	3
Oyo	2	0	1	0	1	0	0	0
Plateau	10	0	3	5	0	2	0	0
Rivers	16	2	1	6	2	1	4	0
Sokoto	0	0	0	0	0	0	0	0
Taraba	0	0	0	0	0	0	0	0
Yobe	19	0	0	0	0	19	0	0
Zamfara	0	0	0	0	0	0	0	0
Total	462	37	156	81	62	55	43	28

DAILY RECOVERIES – DATA AS AT 2ND MAY 2021

Table 3: States with reported case management confirmed COVID-19 recoveries daily over the last week.

CONFIRMED RECOVERIES	WEEK 17	27 th April	28 th April	29 th April	30 th April	1 st May	2 nd May	3 rd May
	TOTAL	Monday	Tuesday	Wednesday	Thursday	Friday	Saturday	Sunday
Abia	0	0	0	0	0	0	0	0
Adamawa	1	0	1	0	0	0	0	0
Akwa Ibom	36	17	10	0	0	9	0	0
Anambra	0	0	0	0	0	0	0	0
Bauchi	0	0	0	0	0	0	0	0
Bayelsa	0	0	0	0	0	0	0	0
Benue	0	0	0	0	0	0	0	0
Borno	0	0	0	0	0	0	0	0
Cross River	0	0	0	0	0	0	0	0
Delta	0	0	0	0	0	0	0	0
Ebonyi	0	0	0	0	0	0	0	0
Edo	5	1	0	0	0	0	0	4
Ekiti	5	0	0	0	0	5	0	0
Enugu	0	0	0	0	0	0	0	0
FCT	5	0	5	0	0	0	0	0
Gombe	0	0	0	0	0	0	0	0
Imo	0	0	0	0	0	0	0	0
Jigawa	7	0	7	0	0	0	0	0
Kaduna	11	1	1	0	2	6	1	0
Kano	6	6	0	0	0	0	0	0
Katsina	0	0	0	0	0	0	0	0
Kebbi	0	0	0	0	0	0	0	0
Kogi	0	0	0	0	0	0	0	0
Kwara	248	0	0	0	0	0	0	248
Lagos	0	0	0	0	0	0	0	0
Nasarawa	0	0	0	0	0	0	0	0
Niger	0	0	0	0	0	0	0	0
Ogun	20	1	1	0	9	5	4	0
Ondo	0	0	0	0	0	0	0	0

CONFIRMED RECOVERIES	WEEK 17	27 th April	28 th April	29 th April	30 th April	1 st May	2 nd May	3 rd May
	TOTAL	Monday	Tuesday	Wednesday	Thursday	Friday	Saturday	Sunday
Osun	8	3	0	0	2	0	3	0
Oyo	0	0	0	0	0	0	0	0
Plateau	5	0	5	0	0	0	0	0
Rivers	55	8	19	9	7	12	0	0
Sokoto	0	0	0	0	0	0	0	0
Taraba	0	0	0	0	0	0	0	0
Yobe	23	0	0	0	0	23	0	0
Zamfara	0	0	0	0	0	0	0	0
Total	435	37	49	9	20	60	8	252

DAILY FATALITIES – DATA AS AT 2ND MAY 2021

Table 4: States with reported COVID-19 fatalities daily over the last week

CONFIRMED FATALITIES	WEEK 17	27 th April	28 th April	29 th April	30 th April	1 st May	2 nd May	3 rd May
	TOTAL	Monday	Tuesday	Wednesday	Thursday	Friday	Saturday	Sunday
Abia	0	0	0	0	0	0	0	0
Adamawa	0	0	0	0	0	0	0	0
Akwa Ibom	0	0	0	0	0	0	0	0
Anambra	0	0	0	0	0	0	0	0
Bauchi	0	0	0	0	0	0	0	0
Bayelsa	0	0	0	0	0	0	0	0
Benue	0	0	0	0	0	0	0	0
Borno	0	0	0	0	0	0	0	0
Cross River	0	0	0	0	0	0	0	0
Delta	0	0	0	0	0	0	0	0
Ebonyi	0	0	0	0	0	0	0	0
Edo	0	0	0	0	0	0	0	0
Ekiti	0	0	0	0	0	0	0	0
Enugu	0	0	0	0	0	0	0	0
FCT	1	0	1	0	0	0	0	0
Gombe	0	0	0	0	0	0	0	0
Imo	0	0	0	0	0	0	0	0
Jigawa	0	0	0	0	0	0	0	0
Kaduna	0	0	0	0	0	0	0	0
Kano	0	0	0	0	0	0	0	0
Katsina	0	0	0	0	0	0	0	0
Kebbi	0	0	0	0	0	0	0	0
Kogi	0	0	0	0	0	0	0	0
Kwara	0	0	0	0	0	0	0	0
Lagos	0	0	0	0	0	0	0	0
Nasarawa	0	0	0	0	0	0	0	0
Niger	0	0	0	0	0	0	0	0

CONFIRMED FATALITIES	WEEK 17	27 th April	28 th April	29 th April	30 th April	1 st May	2 nd May	3 rd May
	TOTAL	Monday	Tuesday	Wednesday	Thursday	Friday	Saturday	Sunday
Ogun	0	0	0	0	0	0	0	0
Ondo	0	0	0	0	0	0	0	0
Osun	0	0	0	0	0	0	0	0
Oyo	0	0	0	0	0	0	0	0
Plateau	0	0	0	0	0	0	0	0
Rivers	0	0	0	0	0	0	0	0
Sokoto	0	0	0	0	0	0	0	0
Taraba	0	0	0	0	0	0	0	0
Yobe	0	0	0	0	0	0	0	0
Zamfara	0	0	0	0	0	0	0	0
Total	1	0	1	0	0	0	0	0

DAILY EPICURVE

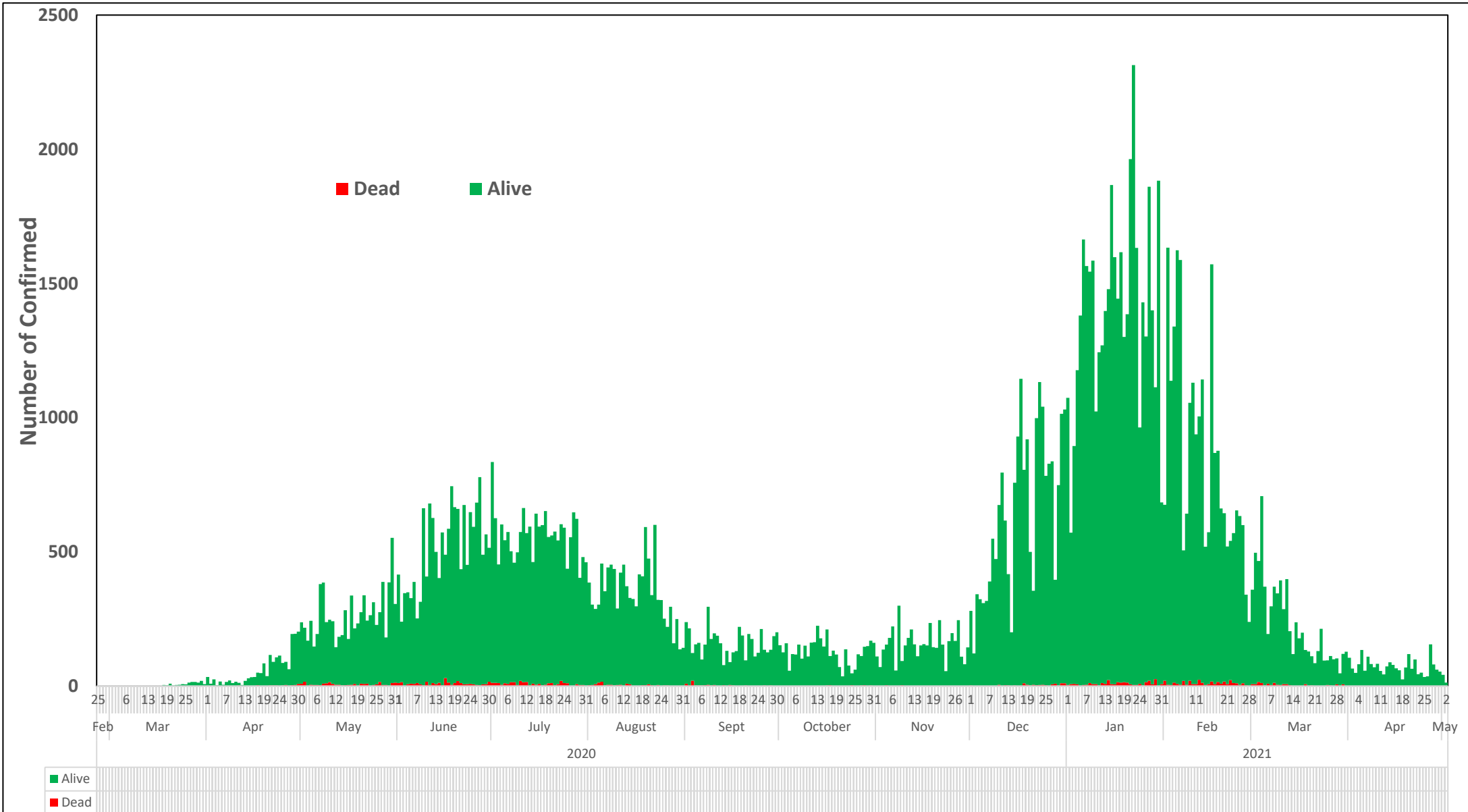


Figure 3: Daily epidemic curve of confirmed cases as reported per day as of 2nd May 2021

WEEKLY EPICURVE

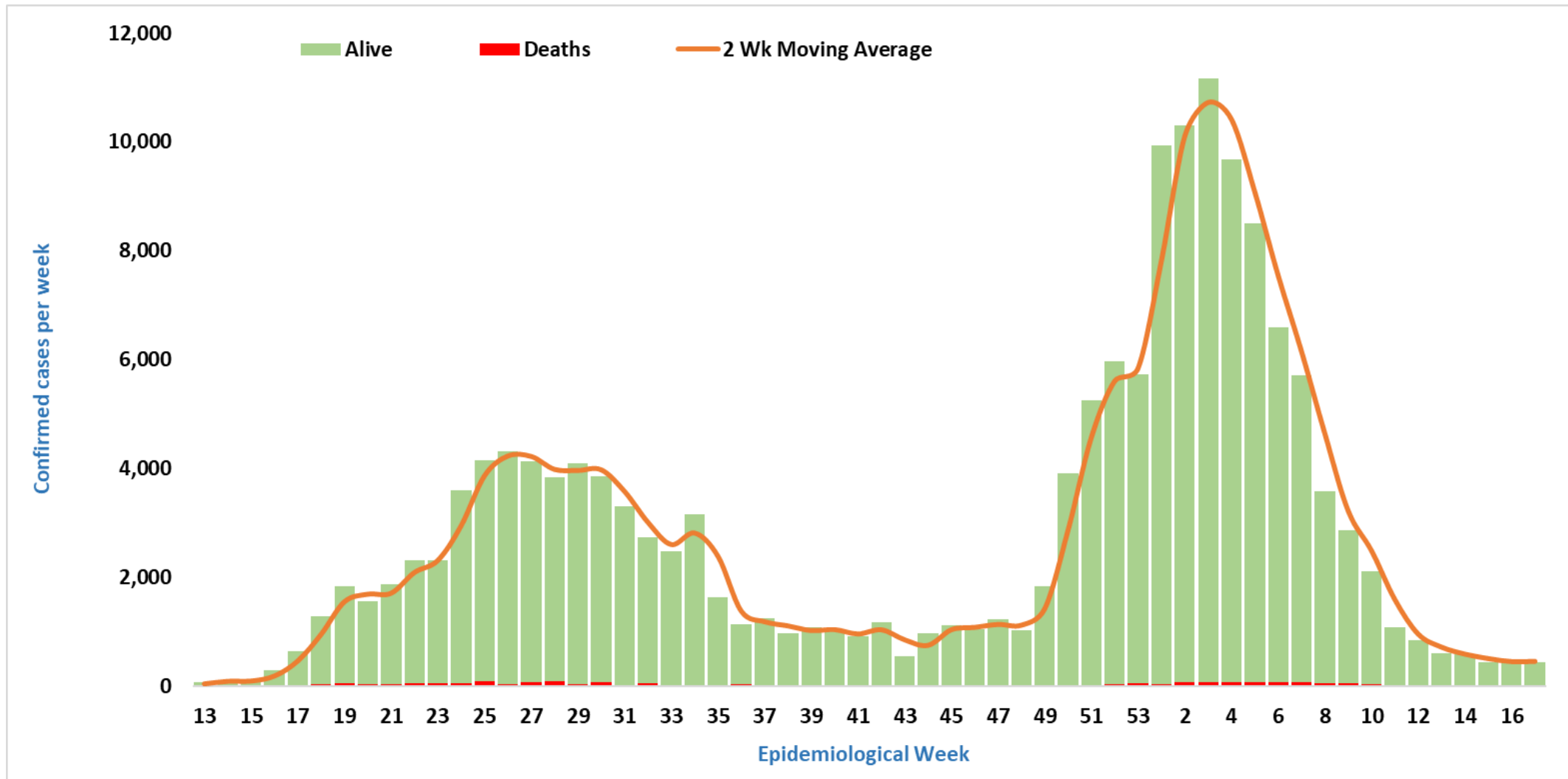


Figure 4: Weekly epidemic curve of confirmed cases (WK13, 2020 – WK17, 2021) as reported per week

WEEKLY EPICURVE WITH TESTS AND TEST POSITIVITY RATIO (TPR)

Trends in COVID-19 Weekly Tests and Weekly TPR (%) (2 wk moving avg) from week 17, 2020 to week 17, 2021

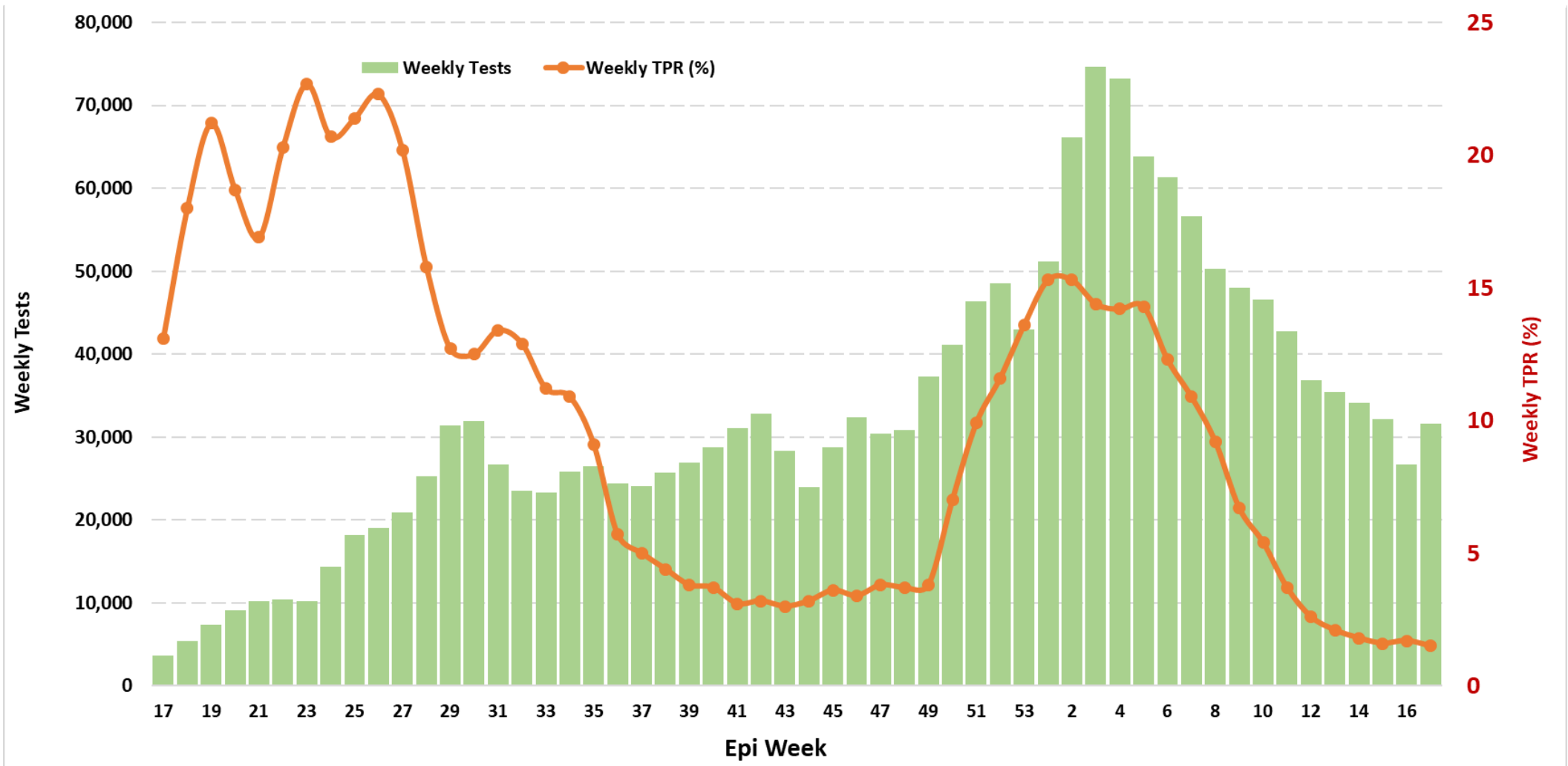


Figure 5: Trends in Weekly TPR (%) (2 weeks moving average) (WK17, 2020 – WK17, 2021). This is based on PCR results only

SELECTED CHARTS: FATALITY TRENDS CASE FATALITY RATIO

Trends in COVID-19 Weekly Cases and Weekly CFR (%) (2 wk moving avg) from week 17, 2020 to week 17, 2021

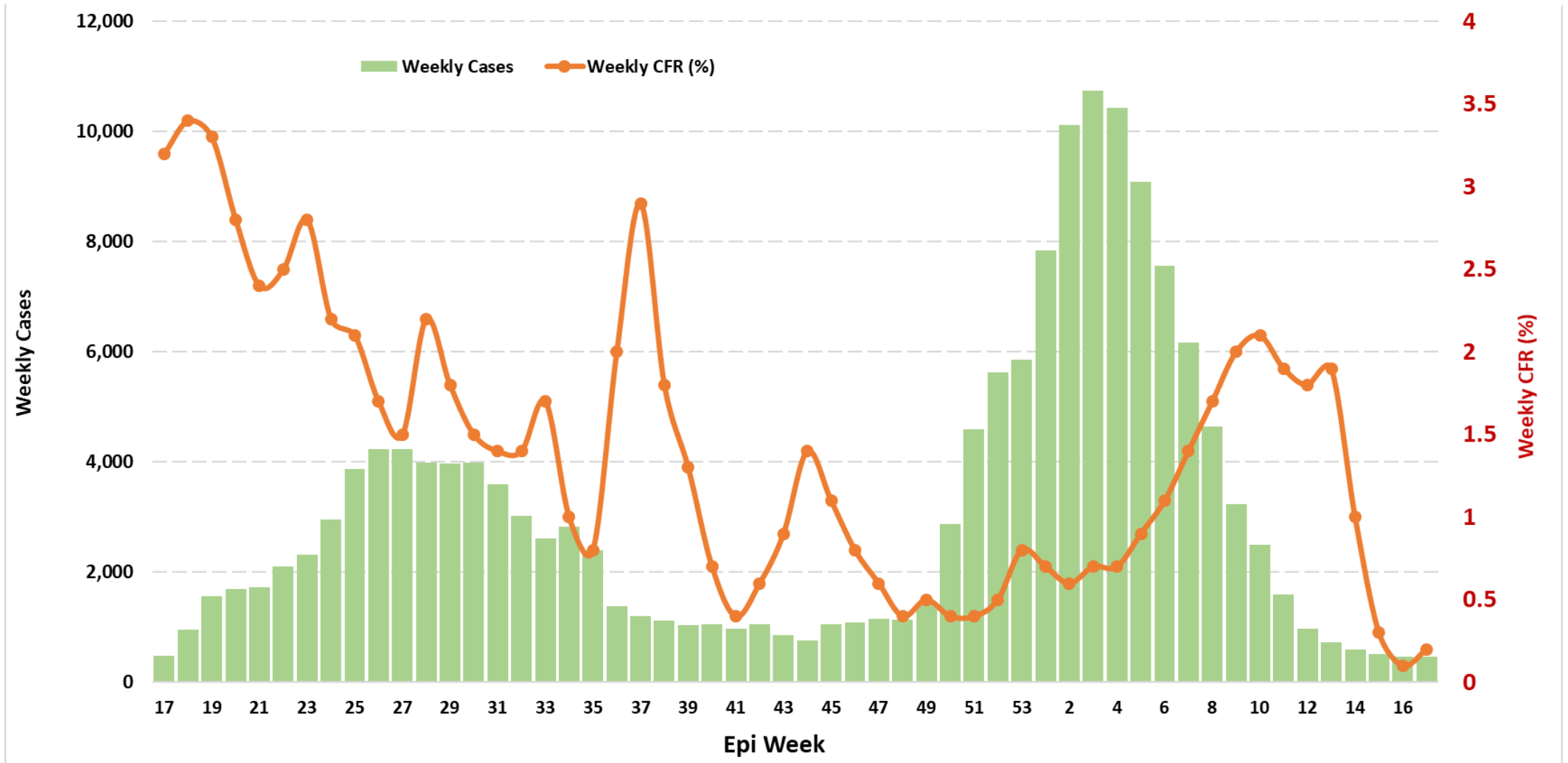


Figure 6: Trends in weekly case fatality ratio (2 weeks moving average) (WK17, 2020 – WK17, 2021)

AGE-GENDER BREAKDOWN

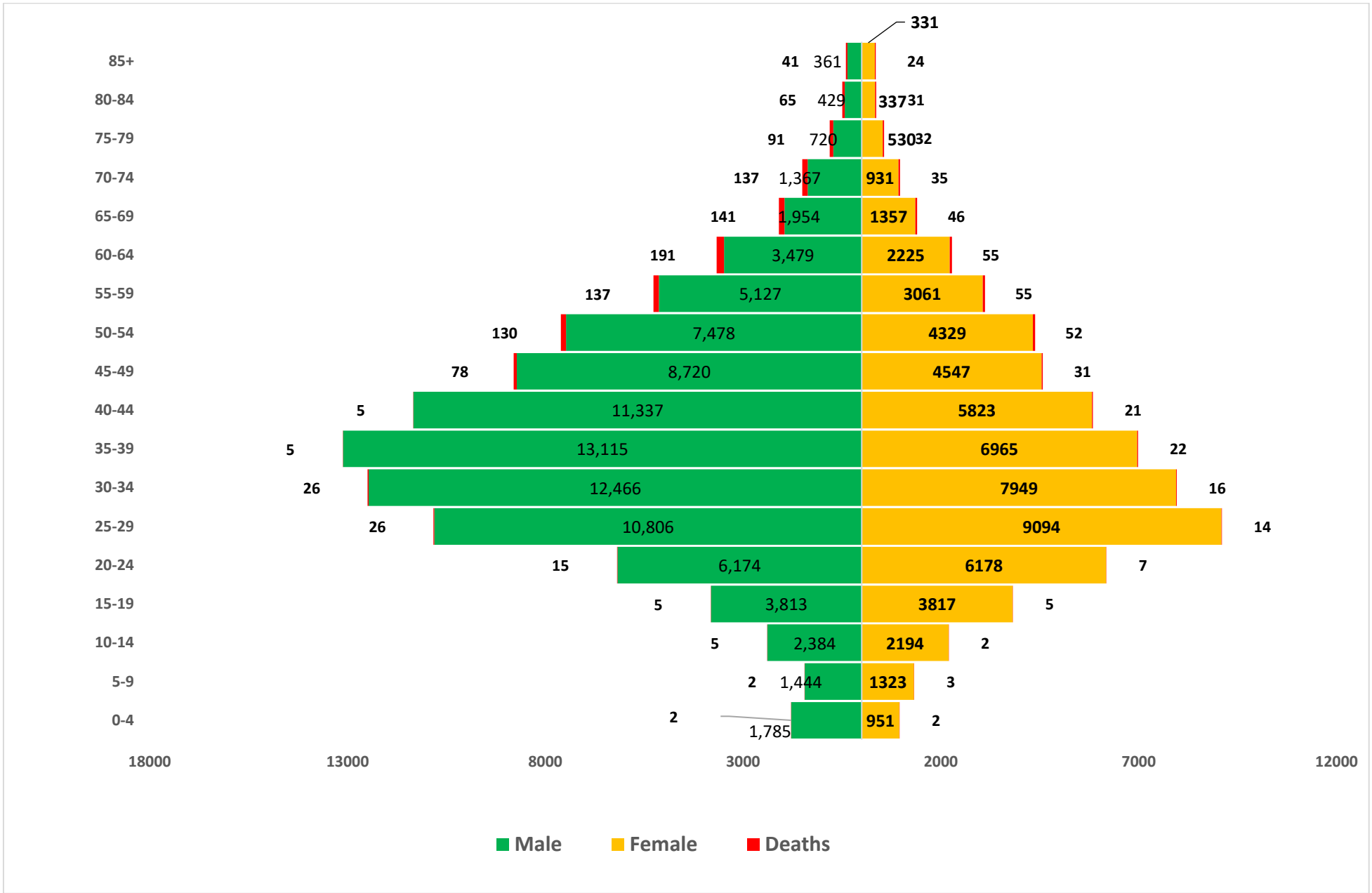


Figure 7: Chart with age and gender breakdown of cases and deaths (WK10, 2020 – WK17, 2021)

RESPONSE COMMODITIES DISTRIBUTION

Table 5: Response commodities distributed in week 17

No.	ITEM	UNIT	Kaduna State Ministry of Health	ABU Teaching Hospital, Kaduna State	Kano State Ministry of Health	Aminu Kano Teaching Hospital, Kano State	Sokoto State Ministry Of Health	Usman Dan Fodio University Teaching Hospital	Kebbi State Ministry of Health	FMC Birnin-Kebbi, Kebbi State	Katsina State Ministry of Health	FMC Katsina	Zamfara State Ministry of Health	FMC Gusau, Zamfara State
1	Gown	Piece	600	800	600	800	600	800	600	800	600	800	600	800
2	Coverall PPE	Piece	250	200	250	200	250	200	250	200	250	200	250	200
3	Face Mask	Piece	3,500	4,000	3,500	4,000	3,500	4,000	3,500	4,000	3,500	4,000	3,500	4,000
4	N95/KN95 Face Masks	Piece	800	600	800	600	800	600	800	600	800	600	800	600
5	Face Shield	Piece	350	300	350	300	350	300	350	300	350	300	350	300
6	Goggles	Piece	300	300	300	300	300	300	300	300	300	300	300	300
7	Digital Thermometer	Piece	50	0	50	0	50	0	50	0	50	0	50	0
8	Sharps Container (Plastic)	Piece	25	25	25	25	25	25	25	25	25	25	25	25
9	Shoe Cover	Pair	100	200	100	200	100	200	100	200	100	200	100	200
10	Scrubs set (Reusable)	Piece	750	1,500	750	1,500	750	1,500	750	1,500	750	1,500	750	1,500
11	Washing Liquid	Piece	12	12	12	12	12	12	12	12	12	12	12	12
12	Disposable Gloves	Pack	1	0	1	0	1	0	1	0	1	0	1	0
13	Waste Bins	Piece	1	0	1	0	1	0	1	0	1	0	1	0
14	Dexamethasone Tab	Cartons	0	2	0	2	0	2	0	2	0	2	0	2
15	Rock Jogger Boots	Pair	0	10	0	10	0	10	0	10	0	10	0	10
16	Dettol Soap	Piece	72	144	72	144	72	144	72	144	72	144	72	144
17	Powdered gloves (msh)	Piece	600	400	600	400	600	400	600	400	600	400	600	400
18	Colour coded waste bin with pedal 60 litres (msh)	Piece	15	15	15	15	15	15	15	15	15	15	15	15

No.	ITEM	UNIT	Jigawa State Ministry of Health	FMC Nguru, Yobe State	Benue State Ministry of Health	FMC Makurdi, Benue State	Niger State Ministry Of Health	FMC Bida, Niger State	Nasarawa State Ministry of Health	FMC Keffi, Nasarawa State	Plateau State Ministry of Health	Jos University Teaching Hospital, Plateau State
1	Gown	Piece	600	800	600	800	600	800	600	800	600	800
2	Coverall PPE	Piece	250	200	250	200	250	200	250	200	250	200
3	Face Mask	Piece	3,500	4,000	3,500	4,000	3,500	4,000	3,500	4,000	3,500	4,000
4	N95/KN95 Face Masks	Piece	800	600	800	600	800	600	800	600	800	600
5	Face Shield	Piece	350	300	350	300	350	300	350	300	350	300
6	Goggles	Piece	300	300	300	300	300	300	300	300	300	300
7	Digital Thermometer	Piece	50	0	50	0	50	0	50	0	50	0
8	Sharps Container (Plastic)	Piece	25	25	25	25	25	25	25	25	25	25
9	Shoe Cover	Pair	100	200	100	200	100	200	100	200	100	200
10	Scrubs set (Reusable)	Piece	750	1,500	750	1,500	750	1,500	750	1,500	750	1,500
11	Washing Liquid	Piece	12	12	12	12	12	12	12	12	12	12
12	Disposable Gloves	Pack	1	0	1	0	1	0	1	0	1	0
13	Waste Bins	Piece	1	0	1	0	1	0	1	0	1	0
14	Dexamethasone Tab	Cartons	0	2	0	2	0	2	0	2	0	2
15	Rock Jogger Boots	Pair	0	10	0	10	0	10	0	10	0	10
16	Dettol Soap	Piece	72	144	72	144	72	144	72	144	72	144
17	Powdered gloves (msh)	Piece	600	400	600	400	600	400	600	400	600	400
18	Colour coded waste bin with pedal 60 litres (msh)	Piece	15	15	15	15	15	15	15	15	15	15

IN FOCUS: COVID-19: World immunisation week in COVID-19 pandemic

The global health community observed the World Immunisation Week from 24th – 30th April, 2021. Immunisation is one of the most effective public health interventions, responsible for averting 4-5 million deaths annually. Vaccines work by eliciting an immune response so that when an individual is exposed to a particular infectious agent, the body is prepared to fight it. Vaccines reduce the risks of getting a disease by working with our body's natural defences to recognise an invading germ such as viruses or bacteria. The body produces antibodies which are proteins produced naturally by the immune system to fight the disease. A vaccine is therefore a safe and clever way to produce an immune response in the body, without causing illness.

With the COVID-19 pandemic, the World Health Organisation (WHO) has coordinated the research and development of safe and effective vaccines globally as one of the tools to end this pandemic. Furthermore, scientists and researchers have also worked hard to develop safe and effective vaccines against the SARS-CoV-2. Rigorous valuation of clinical trials by WHO and country regulatory authorities are obtained before approvals for guided public vaccinations are done. Millions of doses of COVID-19 vaccines of different types have been produced, distributed, and administered in many countries to halt the pandemic. The COVID-19 vaccines have been proven to be safe and effective in reducing the severity of the disease and reducing the risk of transmission, which are essential to saving lives and managing the pandemic. The number of cases has reduced in countries with high vaccination coverage.

Nigeria's COVID-19 vaccination exercise commenced in March 2021. This is led by the National Primary Health Care Development Agency (NPHCDA) under the auspices of the Federal Ministry of Health. Nigeria's COVID-19 immunisation campaign is aimed at vaccinating at least 70% of the Nigerian population against COVID-19 thereby achieving herd immunity. Daily number of vaccinated persons can be obtained from [NPHCDA](#).

The disease caused by the SARS-CoV-2 virus is a respiratory illness spread by droplets when an infected person coughs, sneezes, or talks. These droplets land on surfaces or are inhaled by another person. Although most people with COVID-19 experience mild to moderate respiratory symptoms, the elderly and those with underlying medical conditions are more likely to develop severe disease. The COVID-19 vaccination is a key step in reducing the number of hospitalisations and deaths due to severe cases. Prevention of severe COVID-19 cases is critical to prevent overwhelming the health system.

The pandemic has claimed millions of lives and has had grave economic and social impact in Nigeria and globally. We urge Nigerians to get vaccinated, as scheduled by NPHCDA. Full immunisation takes effect after about 14 days from the second dosage of a two dose regimen. When vaccinated, you protect yourself, your loved ones and your community. However, before herd immunity is achieved, we must continue to adhere to non-pharmaceutical interventions listed below to limit the spread of COVID-19.

1. Wear a face mask.
2. Maintain a physical distance of at least 2 metres between yourself and others.
3. Wash your hands frequently with soap under running water especially after touching high-contact surfaces.
4. Practice proper respiratory hygiene.
5. Avoid crowds and limit travel.
6. Ensure good ventilation in indoor spaces.

RESPONSE

On 28th February 2020, a multi-sectoral Emergency Operations Centre (EOC) was activated at Level 3 which is the highest emergency level in Nigeria. This is led by NCDC in close coordination with the State Public Health EOCs (PHEOC) and through the deployment of **53** Rapid Response Teams (RRT) to states. Currently, response activities include:

- **Continued tracking and collation of data from States for strategic coordination**
- **Conducted advocacy visit to the management of Federal Medical Centre (FMC), Jabi, FCT in commemoration of Hand Hygiene Day**
- **Finalised plans to commence screening and triage training in tertiary health facilities**
- **Conducted SWOT analysis of health facilities across the Federal Capital Territory (FCT) health centres**
- **Supported monitoring and supervision of IPC and vaccination activities in health facilities**
- **Optimised and activated Life-bridge and Biosensors Medical Diagnostics as a fee-paying COVID-19 testing laboratory in FCT**
- **Deployed Lumira Dx Point of Care (POC) kit to test athletes at the Aso Table Tennis Championship in Abuja**
- **Ongoing deployment of Lumira DX Test Kits and equipment to Imo, Ebonyi, Kaduna, Oyo and Enugu**
- **Ongoing monthly distribution of IPC commodities across treatment centres and State Ministry of Health in the North-West and North Central zones**
- **Deployed PPE and consumables to laboratory network in Kaduna, Kwara, Akwa Ibom, Gombe and Jigawa States**
- **Conducted meeting with national stakeholders and Health Educators**
- **Supported the deployment of Ag-RDTs in Internally Displaced Persons' (IDPs) Camp in Abuja**
- **Supported training of journalists by Africa Check in Lagos on infodemic management**
- **Established mechanisms and an intervention plan for antigen rapid diagnostic test kit (Ag-RDT) scale up throughout the country**
- **Completed State Incident Action Plan (IAP) supervisory visits to 35 States and FCT**
- **Continued follow up with states for daily reporting, contact tracing and key challenges**
- **Identified and shared prioritised IAP activities with EOC**
- **Conducted monitoring and supervision of IPC activities in health facilities in Plateau State**
- **Conducted sensitization lectures on IPC in schools and places of worship in Jigawa and Kwara States**
- **Activated Umaru Shehu Ultramodern Hospital PCR Laboratory, Borno State as a public laboratory for COVID-19 testing**
- **Ongoing genomic sequencing of all positive samples from travellers arriving in Nigeria**
- **Continued the dissemination of key safety precaution messages during Ramadan**
- **Ongoing media appearances on radio and television**

- Intensified tracking of stakeholders' activities at state and national level to monitor progress of implementation and provide feedback

PREPAREDNESS

Since the confirmation of the first case on 27th February 2020, the NCDC has released advisories and statements to help Nigerians and affected groups in particular to respond to the pandemic

- NCDC published [One year of COVID-19 response in Nigeria](#)
- NCDC and NIMR publish [findings of COVID-19 household seroprevalence surveys in four states of Nigeria](#)
- NCDC published a [Statement on variants of SARS-CoV-2 in Nigeria](#)
- The Federal Ministry of Education (FME) and partners, PTF and NCDC have developed: [Guidance for integrated safe school re-opening 26th January 2021](#)
- COVID-19 Health Protection Regulation signed by President Muhammadu Buhari on 26th January 2021: [Coronavirus Disease \(COVID-19\) Health Protection Regulations 2021](#)
- NCDC published an updated [community case definitions for coronavirus disease 2019](#)
- The Federal Ministry of Health and NCDC published [COVID-19 Patient's handbook for home-based care in Nigeria](#)
- NCDC published an updated [case definitions for coronavirus disease](#)
- NCDC published [Guidance for the use of approved COVID-19 antigen-based rapid diagnostic tests in Nigeria](#)
- Update of [travel protocols](#) for all travellers into Nigeria from [UK and South Africa](#)
- NCDC recently launched the [Celebrate Responsibly](#) campaign in response to the increase in cases of coronavirus disease (COVID-19) and poor adherence to public health and social measures across the country: [Celebrate Responsibly and Save Lives – New Awareness Campaign for the Yuletide Season](#)
- Ahead of the Christmas and end of year festivity, NCDC published the [End-of-Year Travel Advisory on COVID-19](#)
- NCDC recently launched the [COVID-19 blog](#) for telling the stories of Nigeria's response to the COVID-19 pandemic.
- NCDC published guidelines on 2020 National Youth Service Corps (NYSC) Orientation Camp activities in conjunction with PTF and NYSC: [Guidelines on 2020 National Youth Service Corps \(NYSC\) Orientation Camp activities](#)
- NCDC published guidance on the use of antigen RDTs: [Guidance on the use of Antigen Rapid Diagnostic Kits for diagnosis of SARS-CoV-2 infection in Nigeria](#)
- NCDC published guidance on safe school re-opening: [Public Health guidance for Safe School re-opening in Nigeria](#)
- NCDC published second interim guidance – Infection Prevention and Control: [Recommendations during health care provision for suspected and confirmed cases of COVID-19](#)
- NCDC recently published the first edition of a quick reference guide on setting up sample collection centre - [A step by step guide on setting up a sample collection centre](#)
- NCDC has launched an online course on [Infection, Prevention and Control \(IPC\) for COVID-19](#) NCDC eLearning platform
- Ahead of forthcoming elections in the country, NCDC has issued [Guidelines for Conducting Elections During the COVID-19 Outbreak in Nigeria](#).
- To protect our elders, and those with pre-existing medical conditions, NCDC has issued an [Advisory for Vulnerable Groups](#).
- NCDC has released [guidelines on the re-opening of places for worship](#).

- NCDC has released [Strategies to Improve Surveillance for COVID-19 Guidance for States](#)
- The Nigeria Police Force has released COVID-19 operational guidelines for the [Police and other Law Enforcement Agencies in Nigeria](#)
- Guidelines have been issued for the [safe transportation of remains of persons suspected or confirmed to have died of COVID-19](#)
- Information on diagnostics of the COVID-19 virus can be found in our [detailed FAQ document](#).
- To increase our testing capacity, NCDC has issued guidelines for the [integration of private labs](#).
- Guidelines for [businesses and employers](#) have been updated.
- NCDC has updated its [case definition](#) , [community case definition](#) and [case management guide](#).
- NCDC releases periodic [public health advisories](#) to Nigerians on the COVID-19 disease.
- To adhere to post-lockdown measures, NCDC has released an [advisory on the use of face masks](#), as well as information on the [Use of Cloth face masks](#) and [how to make your cloth face masks](#).
- NCDC has released guidelines for the [management of pregnant women and nursing mothers](#) during the pandemic.
- To address burials of loved ones who die from COVID-19, guidelines have been issued to advise on the [management of dead bodies](#).
- For health centres managing cases, the following documents have been released- a guideline for the [Rational Use of Personal Protective Equipment in the care of COVID-19 cases](#).
- As part of plans to increase the testing capacity of the country, the NCDC published a [National Strategy to Scale Up Access to Coronavirus Disease Testing in Nigeria](#) document.
- The Presidential Task Force has published policies and announcements on COVID-19 [available on the website of the Presidency](#) – including presidential addresses, task force updates and information on livelihood and economic support.

INFORMATION RESOURCES

- Nigeria Centre for Disease Control: www.covid19.ncdc.gov.ng | www.ncdc.gov.ng
 - Nigerian Presidency Website on COVID-19: www.statehouse.gov.ng/COVID19
- WHO Coronavirus Disease (COVID-19) Dashboard (**source for global updates**)
<https://covid19.who.int/>