

SITUATION REPORT

Nigeria Centre For Disease Control (NCDC)

www.ncdc.gov.ng

PLOT 800 EBITU UKIWE STREET, JABI ABUJA, NIGERIA. TOLL FREE CALL: 0800-970000-10. E: info@ncdc.gov.ng



HIGHLIGHTS

TITLE:	MEASLES MONTHLY SITUATION REPORT IN NIGERIA
SERIAL NUMBER:	01
EPI-WEEK:	26-30
DATE:	1st – 31st July, 2019

Highlights

- The National Measles Technical Working Group is monitoring surveillance data across the states
- In this reporting month, **1st - 31th July 2019**:
 - **2431** suspected cases of measles were recorded in **36** states with **17 deaths (CFR=0.7%)**
 - **Borno (623), Katsina (402), Kano (303), Yobe (155), Sokoto (113) and Kaduna (108) states** account for up to **70%** of the cases reported in July 2019
- Between epi-week 1- 30 (January – July), 2019:
 - A total of 49,174 suspected cases have been recorded from **749 LGAs in 36 states and FCT** with **252 deaths (CFR = 0.5%)**
 - Out of the **8473** samples tested, **1969(23.2%)** were **IgM positive** for Measles (confirmed)
- A Rapid response team was deployed to Kaduna state to respond to a measles outbreak in Igabi LGA
- Media messages have been developed and disseminated across social and conventional media platforms
- Reactive vaccination to commence in Igabi LGA in Kaduna state in August, 2019

Summary of measles outbreak in Igabi LGA, Kaduna state

- A total of **260** suspected measles cases were line listed with **15 deaths (CFR 5.2%)** from **eight wards in Igabi LGA of Kaduna state**
- **Male = 117 and Female = 143**
- Children **aged 9-59 months** were most affected - **203 (81.5%) of all cases**
- **Attack rate = 44.5 per 100,000 population**
- No evidence of vaccination with measles containing vaccine among all **260** reported suspected cases
- Of the **37** samples tested, **12 (32.4%)** were **IgM positive** for measles (lab confirmed)

Key Indicators(July 1 st – 31 st)	Number
New cases reported in July	2431
Total deaths in July	17
Total cases	49,174
Total deaths	252(0.3%)
Total samples collected and tested	8473
Total samples positive	1969
States that have reported at least five suspected cases	36
Total number of LGAs with suspected cases	749



Table 1: Summary of Measles reported cases by State Epiweek 01-30, 2019

States	July	Deaths in July	WK 01 - 30, 2019	Total deaths week 1-30 (CFR%)
Abia	49	0	554	0
Adamawa	30	0	1443	44(3.0%)
Akwa Ibom	14	0	261	0
Anambra	45	0	535	1(0.2%)
Bauchi	37	0	1018	0
Bayelsa	48	0	226	0
Benue	5	0	234	0
Borno	623	7	20921	111(0.5%)
Cross River	9	0	279	0
Delta	15	0	378	0
Ebonyi	25	0	194	0
Edo	9	0	291	0
Ekiti	53	0	501	0
Enugu	19	0	341	2(0.6%)
FCT	2	0	190	0
Gombe	25	0	398	0
Imo	50	0	467	4(0.9%)
Jigawa	23	0	935	0
Kaduna	108	2	1370	10(0.7%)
Kano	303	3	2642	27(1.1%)
Katsina	402	4	6640	41(0.6%)
Kebbi	53	0	535	0
Kogi	10	0	234	0
Kwara	6	0	185	0
Lagos	9	0	456	0
Nasarawa	7	0	215	0
Niger	1	0	205	0
Ogun	43	0	549	0
Ondo	13	0	354	0
Osun	26	0	593	0
Oyo	40	0	760	0
Plateau	13	0	339	0
Rivers	26	0	267	0
Sokoto	113	0	992	2(0.2%)
Taraba	9	0	70	0
Yobe	155	1	3261	10(0.3%)
Zamfara	13	0	341	0
Total cases	2,431	17	49,174	252(0.5%)

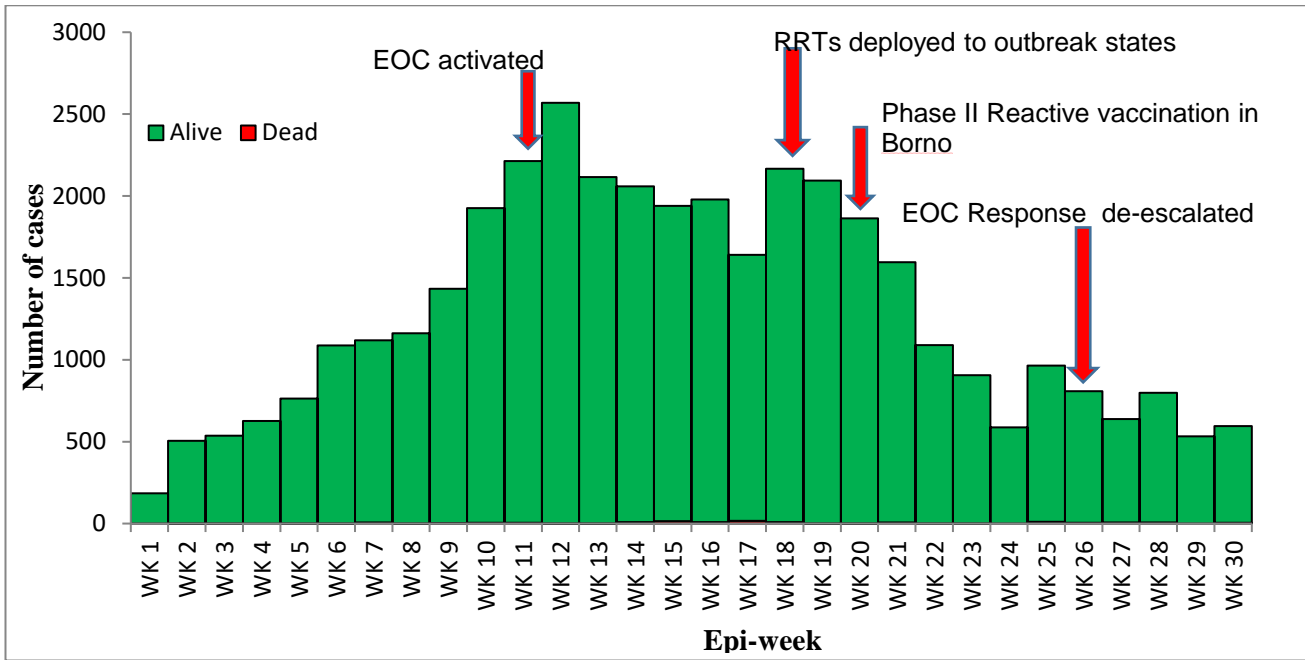


Figure 1: Epidemic curve of measles cases in Nigeria epiweek 1-30,2019 (January to July 31st)

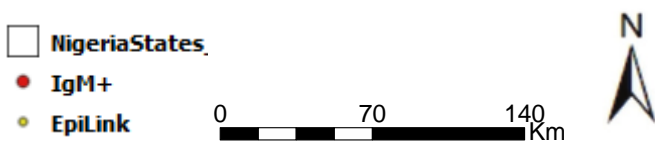
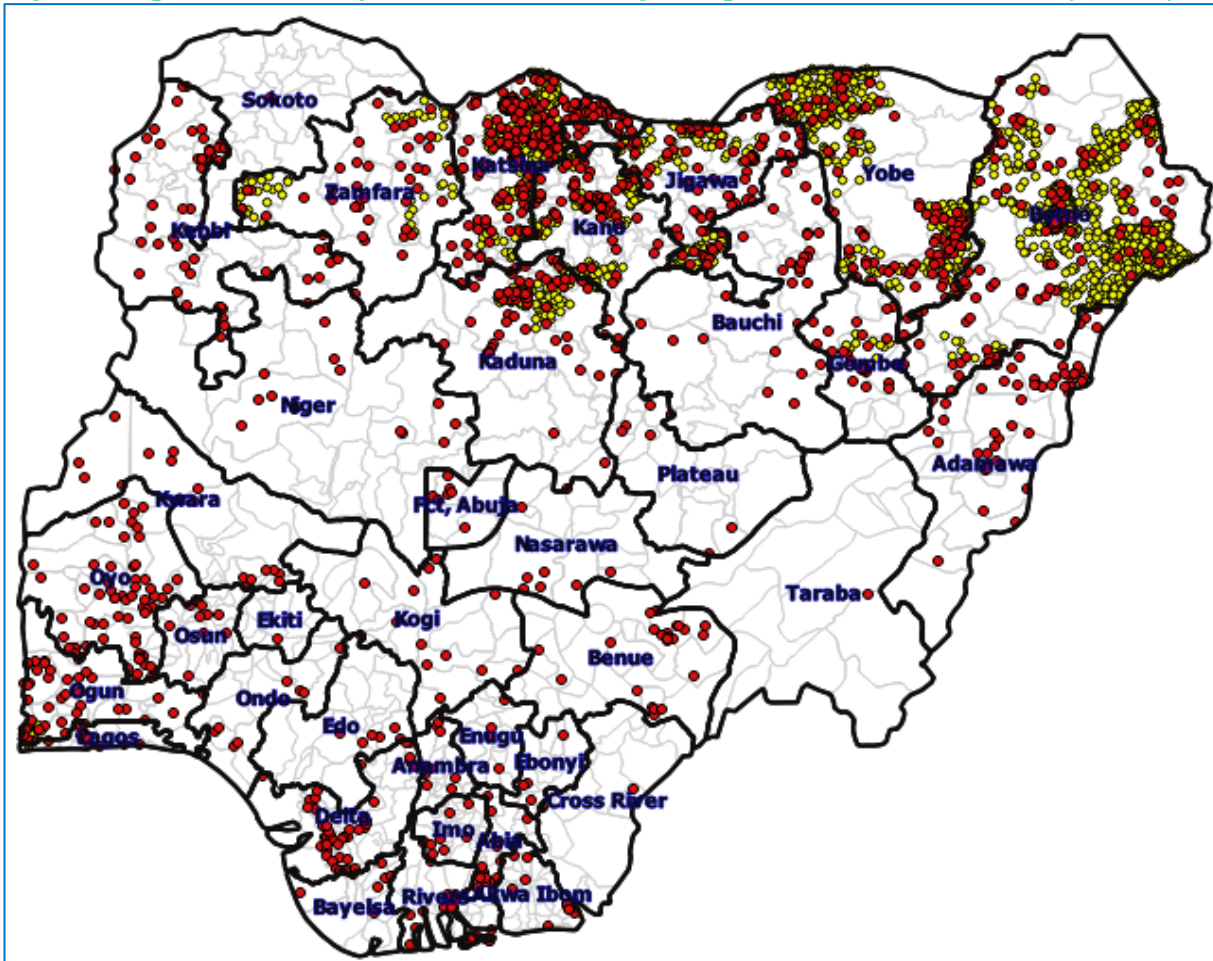


Figure 2: Nigeria Measles Randomized dot Map of Confirmed/Epi Link cases as at week 30, 2019(31st July, 2019)

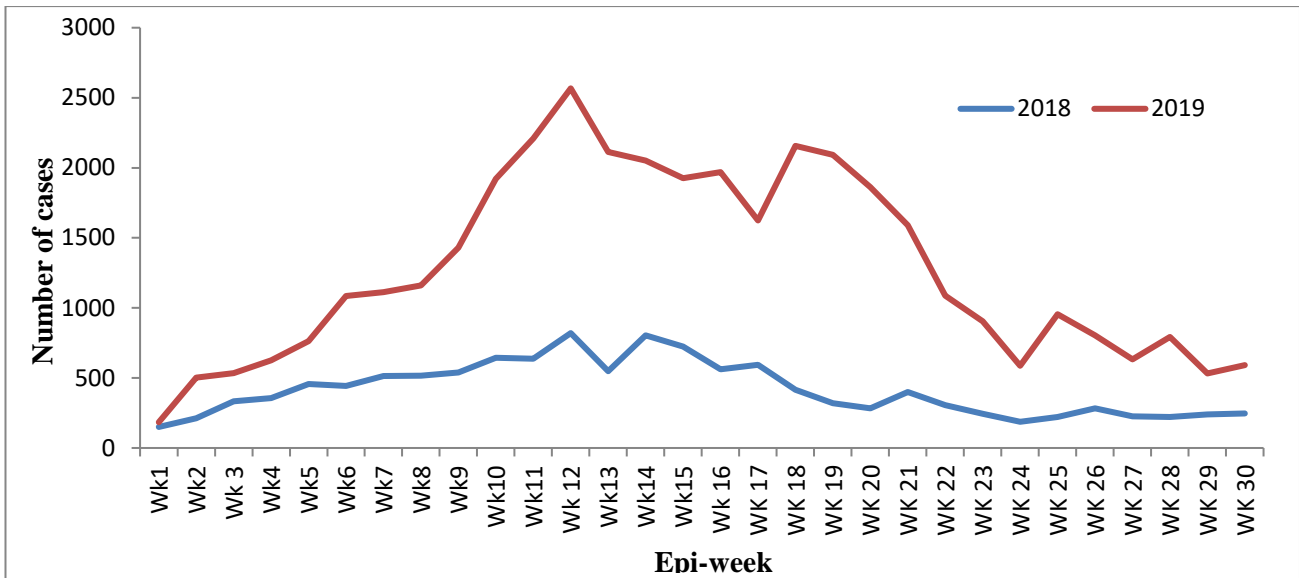


Figure 3: Trends of reported Measles cases in Nigeria 2018 and 2019 week 1-30, 2019

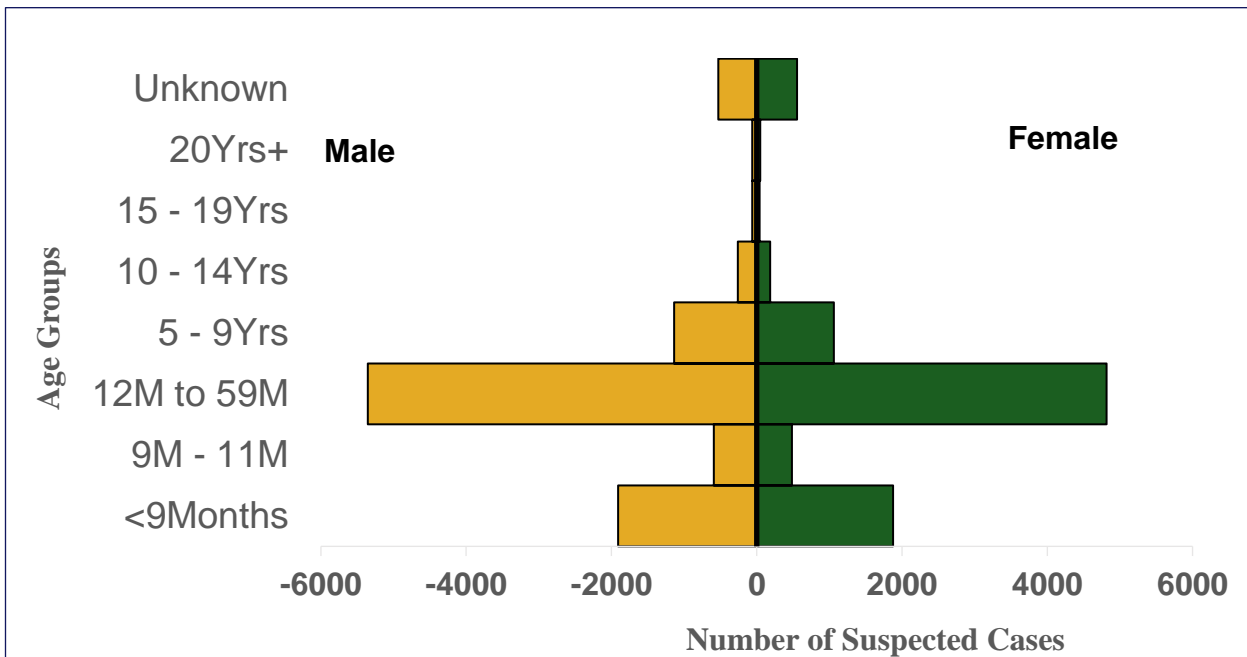


Figure 4: National age-sex distribution as at week 30, 2019

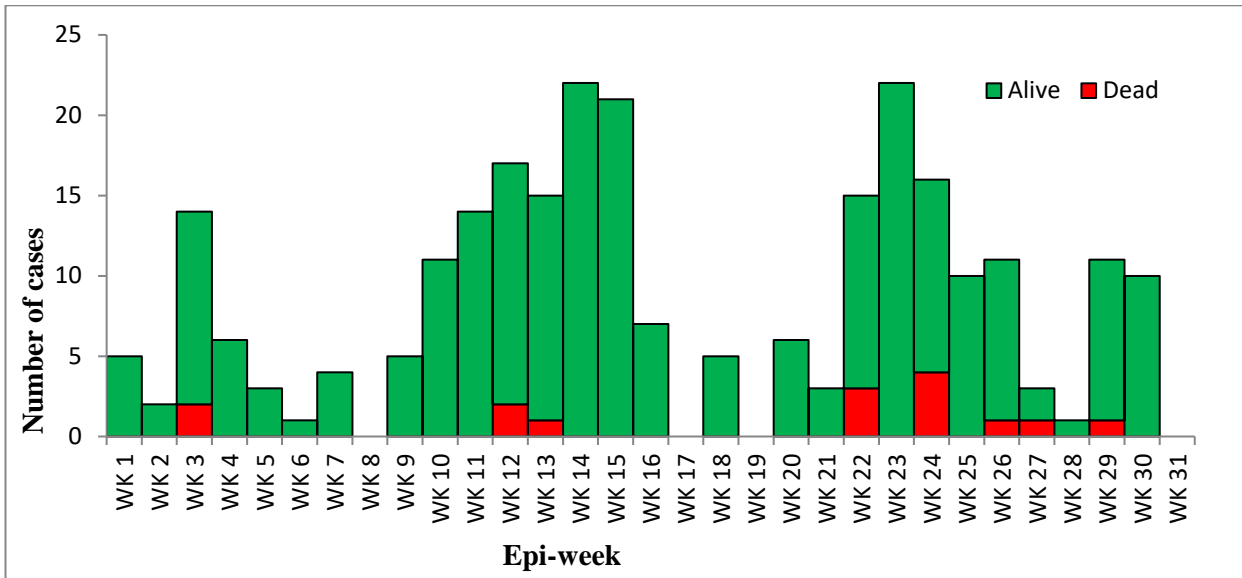


Figure 5: Epi curve of reported measles cases in Igabi LGA as at 31st July, 2019

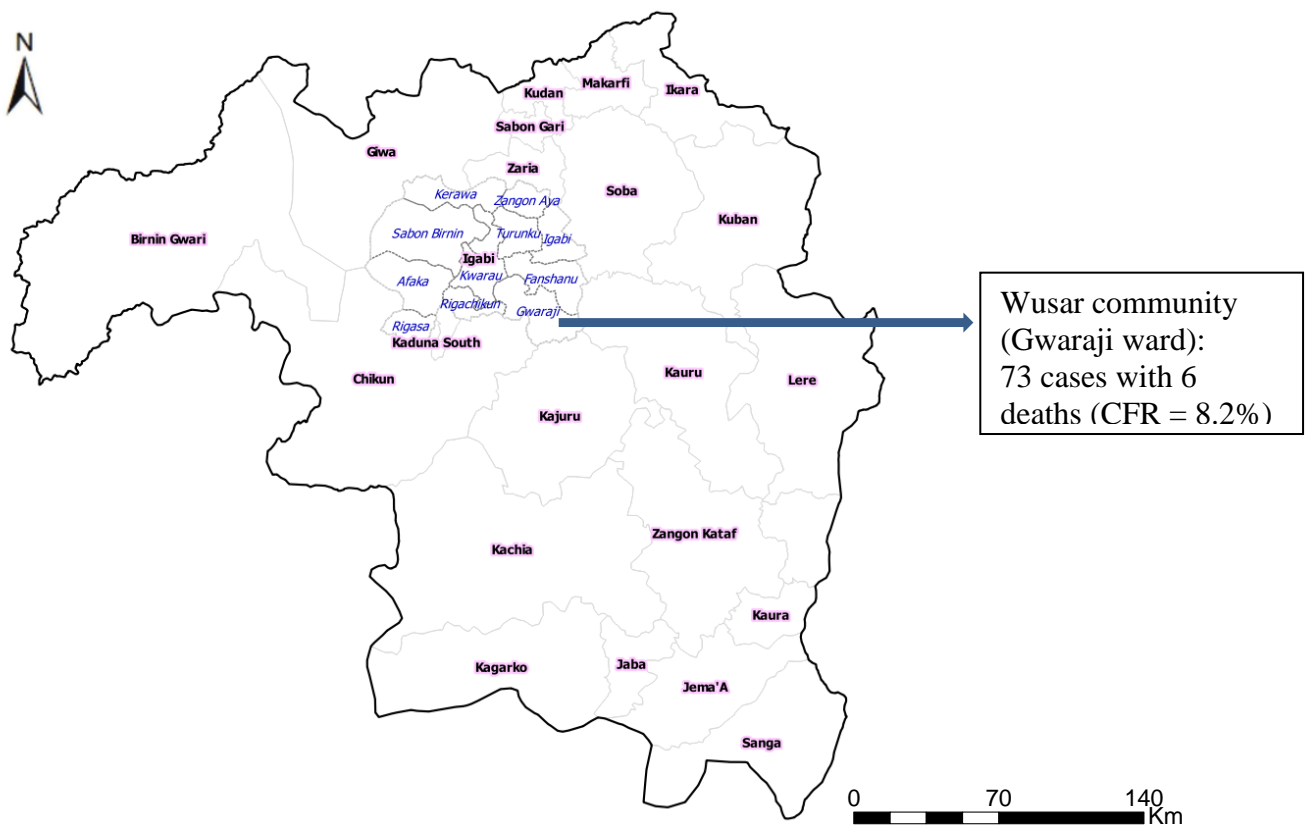


Figure 6: Map of Kaduna state showing Igabi LGA, July 2019

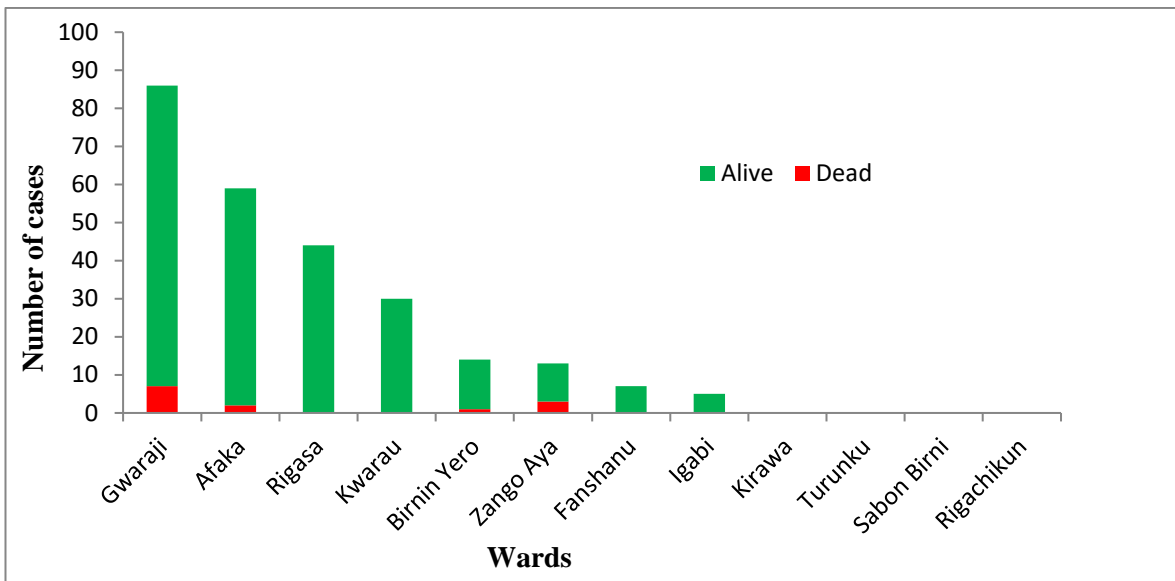


Figure 7: Distribution of reported Measles cases by wards (week 1 to week 30) in Igabi LGA as at 31st July, 2019

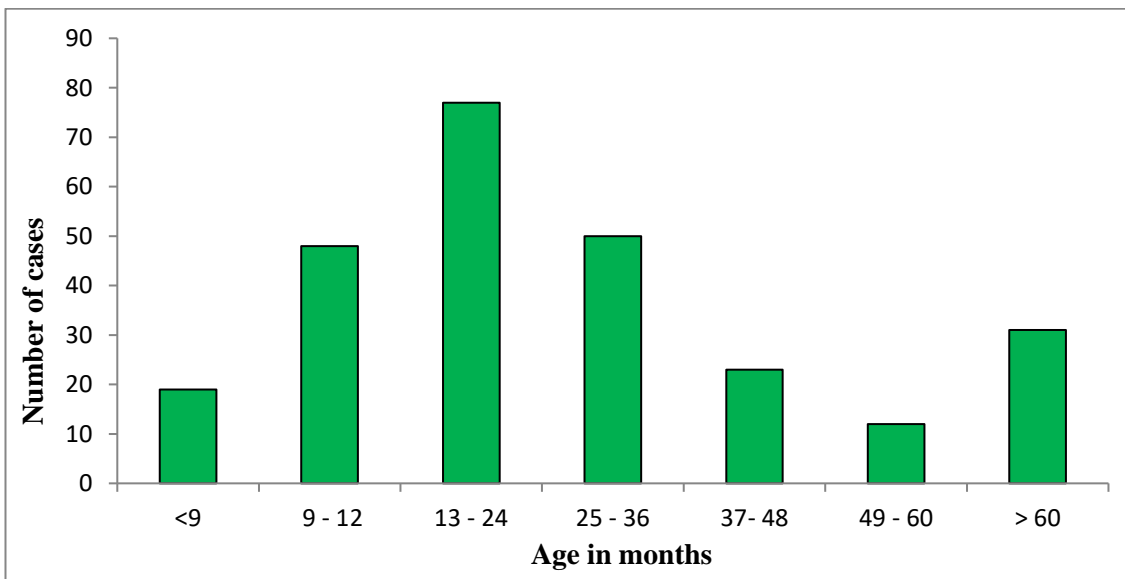


Figure 4: Age distribution of reported Measles cases in Igabi LGA as at 31st July, 2019