



COVID-19 SITUATION REPORT

WEEKLY EPIDEMIOLOGICAL REPORT 4

Epi Week 45: 2nd November – 8th November 2020

DATA AS REPORTED AND ACCURATE BY NCDC AS AT MIDNIGHT 8TH NOVEMBER 2020

STATE OF THE NATION

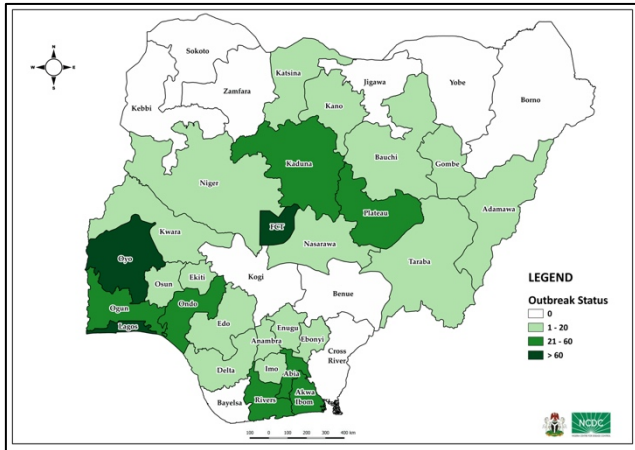


Fig 1. Distribution of cases (EpiWeek 45 only)

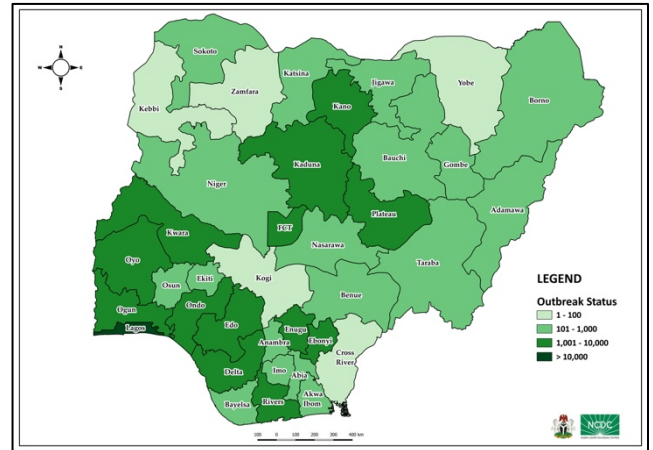


Fig 2. Distribution of cumulative cases

HIGHLIGHTS

- In Week 45, the number of new confirmed cases increased to **1,126** from **972** in week 44. These were reported in **27** states (Table 1).
- In Week 45, the number of discharged cases decreased to **1,120** from **1,325** in week 44. These were reported in **22** states (Table 1).
- Cumulatively, since the outbreak began in Week **9**, there have been **1,154** deaths reported with a case fatality rate (CFR) of **1.8%** (Table 1).
- The number of states, including FCT, that have reported a death in the last one week are **7** (Table 1).
- In Africa, the count for confirmed COVID-19 cases is **1,881,356** with **45,282 deaths** resulting in a case fatality rate of **2.4%**.
- Globally, the count for confirmed COVID-19 cases is **49,578,590** with **1,245,717 deaths** resulting in a case fatality rate of **2.5%**.

GENERAL FACT SHEET – DATA AS AT 8TH NOVEMBER 2020

Table 1: States with reported laboratory-confirmed COVID-19 cases, recoveries, deaths, samples tested and active cases

STATES	CONFIRMED		RECOVERIES		DEATHS		TESTING		ACTIVE CASES
	Total	Last Week	Total	Last Week	Total	Last Week	Total	Last Week	
Abia	926	28	908	36	9	1	9,484	457	9
Adamawa	261	4	238	0	19	0	2,837	25	4
Akwa Ibom	319	24	289	2	9	1	3,526	70	21
Anambra	282	5	256	8	19	0	2,669	84	7
Bauchi	720	7	699	3	14	0	9,218	265	7
Bayelsa	413	0	381	0	21	0	2,729	100	11
Benue	493	0	460	0	11	0	4,192	165	22
Borno	745	0	705	0	36	0	13,292	184	4
Cross River	87	0	74	0	9	0	1,665	53	4
Delta	1,816	2	1,737	0	49	0	13,334	170	30
Ebonyi	1,055	6	1,019	8	30	0	6,214	24	6
Edo	2,673	7	2,536	5	110	1	19,001	464	27
Ekiti	338	3	320	0	6	0	7,047	99	12
Enugu	1,332	18	1,290	21	21	0	8,812	194	21
FCT	6,239	121	5,398	53	82	1	82,094	3,424	759
Gombe	938	1	857	20	25	0	25,026	157	56
Imo	622	5	604	21	12	0	7,862	539	6
Jigawa	325	0	308	0	11	0	2,997	12	6
Kaduna	2,703	48	2,603	36	43	0	27,489	1,263	57
Kano	1,756	9	1,687	3	54	0	54,654	1,759	15
Katsina	953	1	929	1	24	0	24,271	87	0
Kebbi	93	0	84	0	8	0	996	48	1
Kogi	5	0	3	0	2	0	322	21	0
Kwara	1,072	3	1,019	0	26	0	6,681	111	27
Lagos	21,910	623	20,585	162	220	3	173,640	5,843	1,105
Nasarawa	483	1	325	0	13	0	7,109	131	145
Niger	281	7	259	0	12	0	5,836	13	10
Ogun	2,075	28	1,936	14	30	0	20,309	2,537	109
Ondo	1,698	31	1,585	0	37	0	9,318	340	76

STATES	CONFIRMED		RECOVERIES		DEATHS		TESTING		ACTIVE CASES
	Total	Last Week	Total	Last Week	Total	Last Week	Total	Last Week	
Osun	932	3	898	1	20	0	5,720	153	14
Oyo	3,525	74	3,205	589	44	1	25,094	591	276
Plateau	3,676	26	3,600	97	33	0	36,194	1,247	43
Rivers	2,866	35	2,709	31	59	0	55,000	7,284	98
Sokoto	165	0	148	1	17	0	7,719	756	0
Taraba	152	6	115	8	6	0	2,613	73	31
Yobe	82	0	68	0	8	0	1,856	665	6
Zamfara	79	0	73	0	5	0	1,132	4	1
Total	64,090	1,126	59,910	1,120	1,154	8	687,952	29,412	3,026

Note There were some duplicated laboratory results in last week's cumulative samples tested. The cumulative samples tested presented in this sitrep supersedes last week's cumulative tests.

RETURNING PASSENGERS TESTS

Over the last week, the following laboratories carried out COVID-19 tests for returning passengers:

54Gene (Lagos):	17
54Gene (FCT):	145
MEDICAID (FCT):	110
CEDARCREST (FCT):	64
DNA Labs (FCT):	66
TOTAL TESTS:	402

Laboratories not reporting this week

EHA (FCT); UDUTH (Sokoto State); GH Takum (Taraba State); UNIOSUN (Osun State)

DAILY EPICURVE

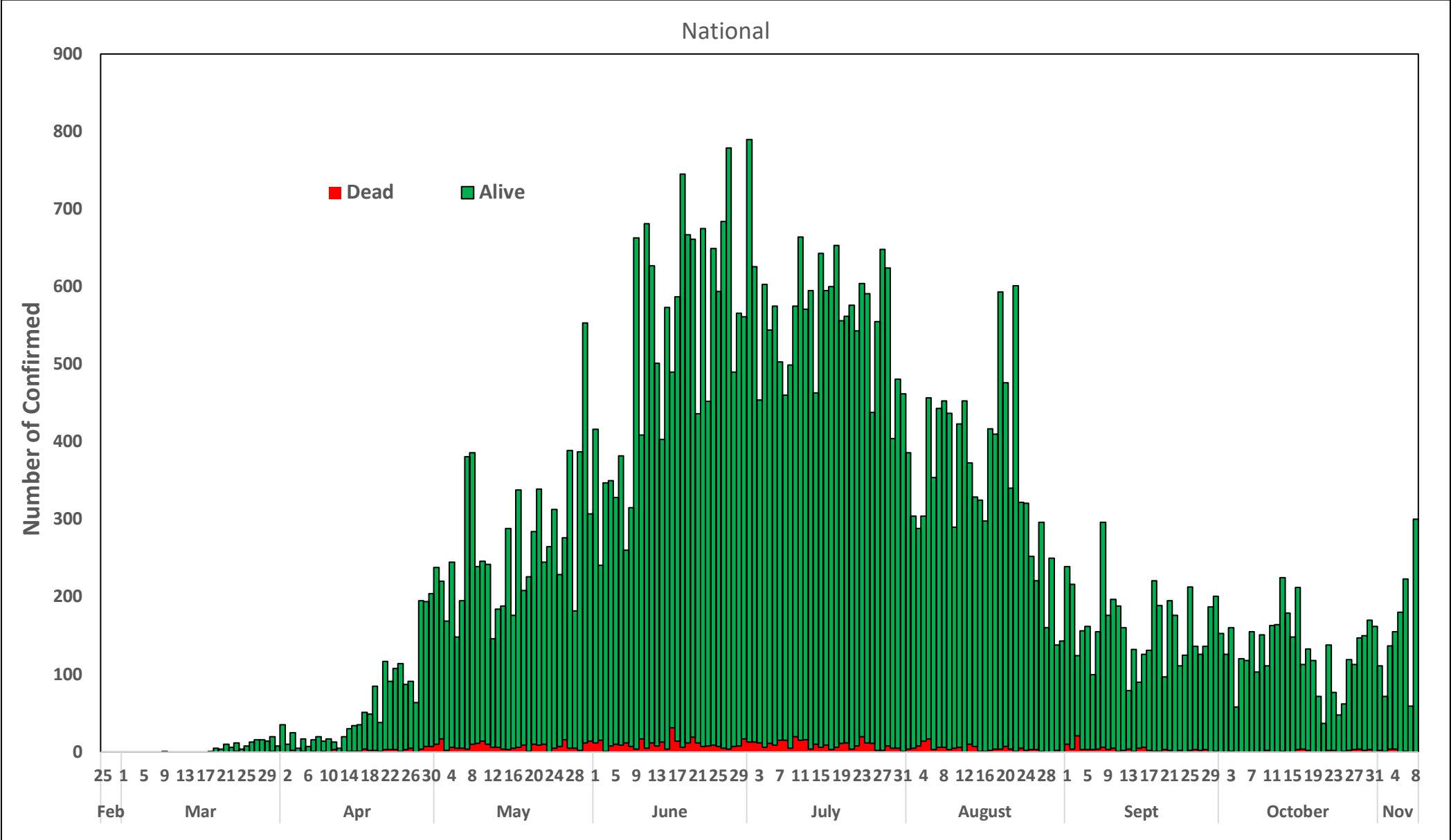


Figure 3: Daily epidemic curve of confirmed cases (WK9 – WK45) as reported per day

AGE-GENDER BREAKDOWN

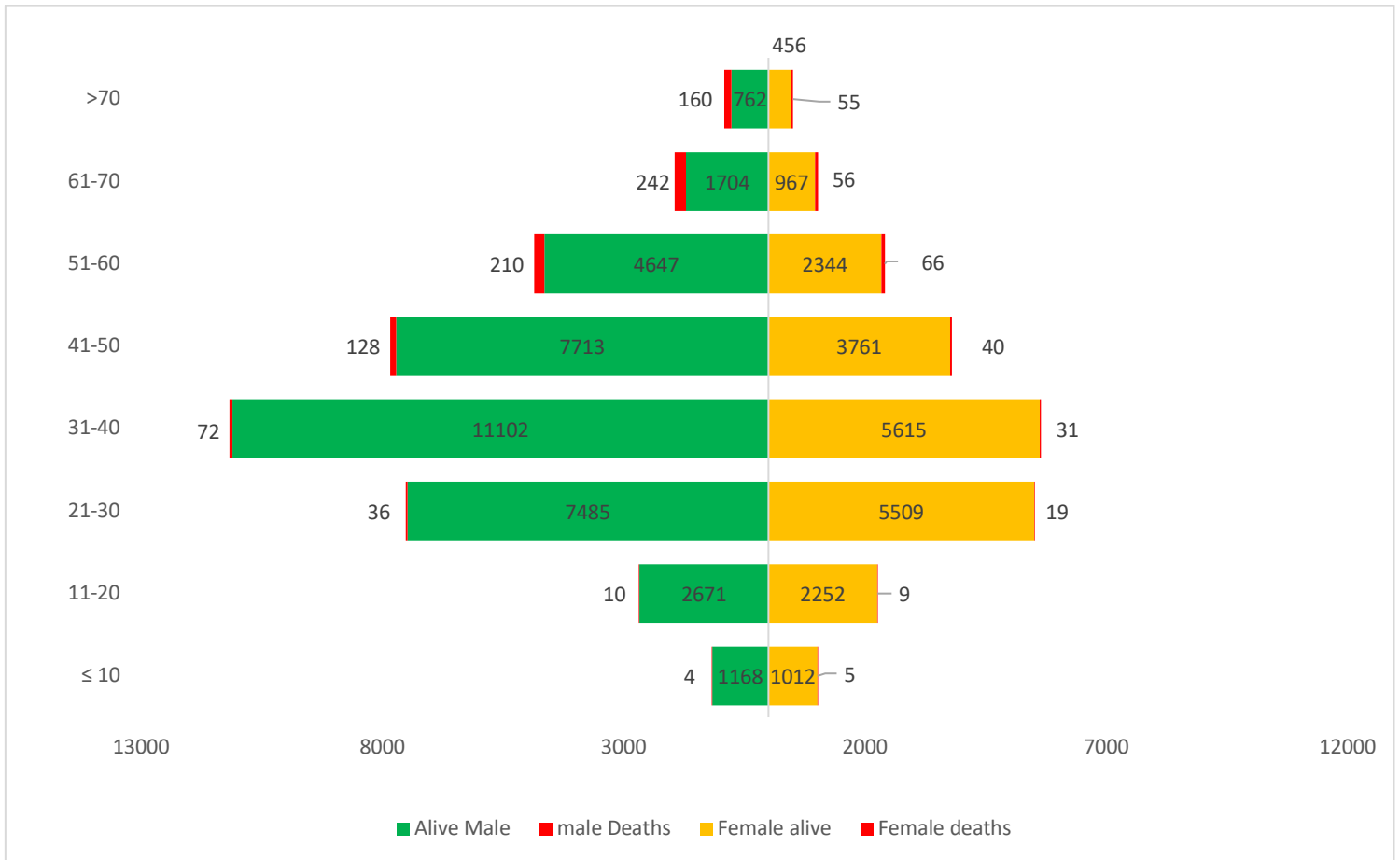


Figure 4: Chart with age and gender breakdown of cases and deaths (Wks 9 – 45)

IN FOCUS: GUIDANCE ON THE USE OF ANTIGEN RAPID DIAGNOSTIC KITS FOR THE DIAGNOSIS OF COVID-19 IN NIGERIA

In September, the World Health Organisation (WHO) announced the emergency use authorisation of two antigen-based rapid diagnostic tests (RDTs) by SD Biosensor and Abbott for COVID-19 testing. These are the only recommended RDTs because they meet the minimal standards of sensitivity at over 80% and specificity at over 97%. It means that they can to a large extent correctly detect COVID-19 in individuals and accurately identify those who do not have the disease with minimal error. While this is helpful, as RDTs are cheaper and have a shorter turn-around time for results, they do not replace PCR testing which remains the gold standard for COVID-19 confirmation.

The Nigeria Centre for Disease Control has recommended the setting and scenarios in which these RDTs will be used in Nigeria, following regulatory approval by the National Agency for Food and Drug Administration and Control (NAFDAC) and validation by the Medical Laboratory and Science Council of Nigeria (MLSCN). These settings have been put into a guidance document that is now on the [NCDC website](#) and clearly states the settings in Nigeria where RDTs will be used in line with WHO recommendations. These include closed settings, such as boarding houses and prisons, and in health facilities for health workers who have been in contact with positive patients or have symptoms and at triage for patients with symptoms of COVID-19.

The NCDC continues to work with all states, relevant Ministries, Departments, Agencies and parastatals involved in the use of the RDTs. This includes the diligent collection of data on RDT utilisation. It is important to note that these RDTs which are validated for use, are not for home or personal use given the risk of virus transmission in these settings. The NCDC will continue to keep the public updated on any changes to this guidance.

RESPONSE

On 28th February 2020, a multi-sectoral Emergency Operations Centre (EOC) was activated at Level 3 – the highest emergency level in Nigeria – led by NCDC in close coordination with the State Public Health EOCs (PHEOC) and through the deployment of **43** RRTs to states.

- **Ongoing deployment of risk assessment teams to hotspot Local Government Areas (LGAs) across the country**
- **Intensified engagement with states on data quality implementation**
- **Deployed SARS-CoV-2 antigen Rapid Diagnostic Test kits (RDTs) and consumables to NYSC health centres to commence sample collection in camps**
- **Distributed twenty (20) handwashing stations to some selected public schools across hotspot LGAs in Borno State**
- **Commenced distribution of Infection Prevention and Control (IPC) supplies to states, Federal Health Institutions (FHIs) and Primary Health Centres (PHCs)**
- Developed Information Education and Communication materials for NYSC re-opening
- Trained state communication teams for NYSC re-opening
- Training of healthcare workers on IPC, Surveillance and Risk Communication and Community Engagement (RCCE) has been conducted across the hotspots LGAs
- Conducted assessment of schools' readiness and preparedness for re-opening, following closure due to COVID-19-related curfew
- Conducted laboratory training of trainers (TOT) on sample collection and rapid diagnostic testing for NYSC camp opening
- Tracking of prioritised State IAP implementation performance in 35 states

PREPAREDNESS

Since the confirmation of the first case on 27th February 2020, the NCDC has released advisories and statements to help Nigerians and affected groups in particular to respond to the pandemic

- NCDC published guidance on the use of antigen RDTs: [Guidance on the use of Antigen Rapid Diagnostic Kits for diagnosis of SARS-CoV-2 infection in Nigeria](#)
- NCDC published guidance on safe school re-opening: [Public Health guidance for Safe School re-opening in Nigeria](#)
- NCDC published second interim guidance – Infection Prevention and Control: [Recommendations during health care provision for suspected and confirmed cases of COVID-19](#)
- NCDC recently published the first edition of a quick reference guide on setting up sample collection centre - [A step by step guide on setting up a sample collection centre](#)
- NCDC has launched an online course on [Infection, Prevention and Control \(IPC\) for COVID-19](#) NCDC eLearning platform
- Ahead of forthcoming elections in the country, NCDC has issued [Guidelines for Conducting Elections During the COVID-19 Outbreak in Nigeria](#).
- To protect our elders, and those with pre-existing medical conditions, NCDC has issued an [Advisory for Vulnerable Groups](#).
- NCDC has released [guidelines on the re-opening of places for worship](#).
- NCDC has released [Strategies to Improve Surveillance for COVID-19 Guidance for States](#)
- The Nigeria Police Force has released COVID-19 operational guidelines for the [Police and other Law Enforcement Agencies](#) in Nigeria
- Guidelines have been issued for the [safe transportation of remains of persons suspected or confirmed to have died of COVID-19](#)
- Information on diagnostics of the COVID-19 virus can be found in our [detailed FAQ document](#).
- To increase our testing capacity, NCDC has issued guidelines for the [integration of private labs](#).
- Guidelines for [businesses and employers](#) have been updated.
- NCDC has updated its [case definition](#) , [community case definition](#) and [case management guide](#).
- NCDC releases periodic [public health advisories](#) to Nigerians on the COVID-19 disease.
- To adhere to post-lockdown measures, NCDC has released an [advisory on the use of face masks](#), as well as information on the [Use of Cloth face masks](#) and [how to make your cloth face masks](#).
- NCDC has released guidelines for the [management of pregnant women and nursing mothers](#) during the pandemic.
- To address burials of loved ones who die from COVID-19, guidelines have been issued to advise on the [management of dead bodies](#).
- For health centres managing cases, the following documents have been released- a guideline for the [Rational Use of Personal Protective Equipment in the care of COVID-19 cases](#).
- As part of plans to increase the testing capacity of the country, the NCDC published a [National Strategy to Scale Up Access to Coronavirus Disease Testing in Nigeria](#) document.
- The Presidential Task Force has published policies and announcements on COVID-19 [available on the website of the Presidency](#) – including presidential addresses, task force updates and information on livelihood and economic support.

INFORMATION RESOURCES

- Nigeria Centre for Disease Control: www.covid19.ncdc.gov.ng | www.ncdc.gov.ng
- Nigerian Presidency Website on COVID-19: www.statehouse.gov.ng/COVID19
- Africa CDC: www.africa.cdc.org | <https://africacdc.org/covid-19/> (source for Africa updates)
- WHO Coronavirus Disease (COVID-19) Dashboard (source for global updates) <https://covid19.who.int/>