



SITUATION REPORT

Nigeria Centre For Disease Control (NCDC)

www.ncdc.gov.ng

PLOT 800 EBITU UKIWE STREET, JABI ABUJA, NIGERIA. TOLL FREE CALL: 0800-970000-10. E: info@ncdc.gov.ng



@NCDCgov

TITLE:	CHOLERA OUTBREAK IN NIGERIA
SERIAL NUMBER:	21
EPI-WEEK:	41
DATE:	15 October, 2018

HIGHLIGHTS

- The multi-agency cholera Emergency Operations Centre (EOC) at NCDC is coordinating the national response
- Active transmission ongoing in six states: Zamfara, Adamawa, Borno, Kano, Katsina, and Yobe
- Commemoration of Global handwashing day organised by the National Task Group on Sanitation (NTGS) and the Federal Ministry of Water Resources (FMWR) on 15 October, 2018
- No cases reported in the following states in the last three or more weeks: Anambra, Bauchi, Ebonyi, FCT, Jigawa, Kaduna, Kogi and Plateau States

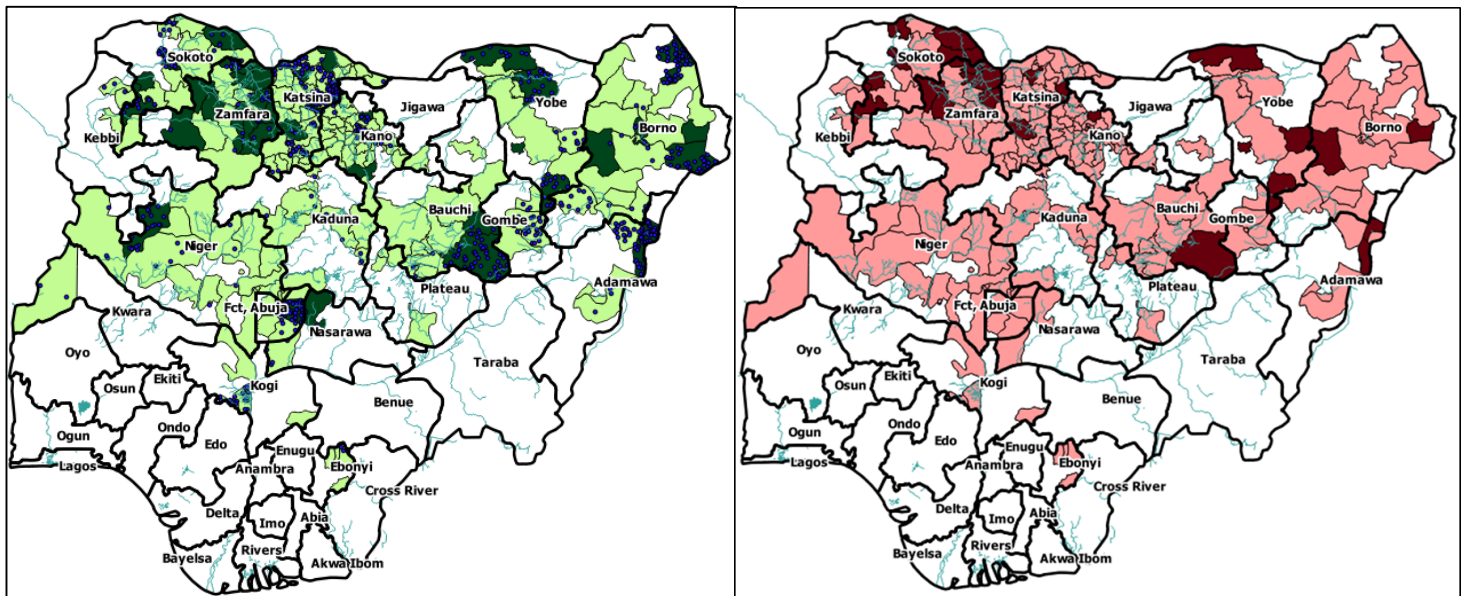
EPI-Summary

- In week 41 (8th – 14th October); 742 new suspected cases were reported from six states- Katsina (66), Borno (335), Zamfara (191), Adamawa (74), Kano (13), and Yobe (63) including 3 deaths in Borno
- In the reporting week, 11 samples were tested from Borno (1) and Yobe (10) States. Of the samples, nine were positive using Rapid Diagnostic Test (RDT) from Borno (1) and Yobe (6)
- As at 15th October 2018, a total of 40,771 suspected cases including 812 deaths with CFR: (1.99%) had been reported from 20 States (Adamawa, Anambra, Bauchi, Borno, Ebonyi, FCT, Gombe, Jigawa, Kaduna, Kano, Katsina, Kebbi, Kogi, Kwara, Nasarawa, Niger, Plateau, Yobe, Sokoto and Zamfara) since the beginning of 2018
- Of the confirmed cases, 26.3% are aged 5 -14 years
- Of the cases, there are 50.3% female and 49.7% male affected

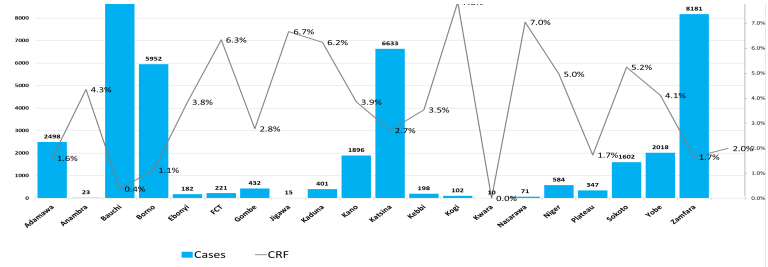
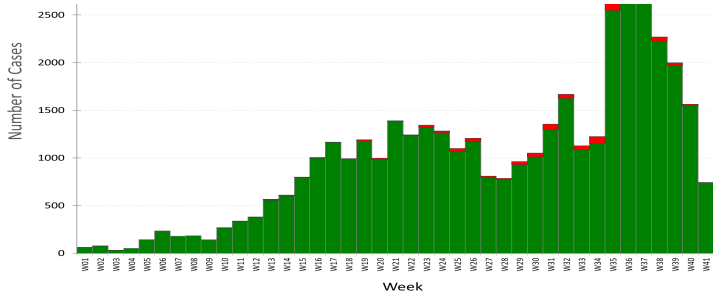
S/N	State	LGAs reporting in week 41 (n)	LGAs ever reported in 2018 cases (n)	Cases in week 41	Total cases reported (n)	Deaths in week 41	Total Deaths (n)	CFR (%)	Total culture positive (n)	Total RDT positive (n)
1	Bauchi	0	10	0	9405	0	35	0.37	15	44
2	Zamfara	4	14	191	8181	0	135	1.65	1	34
3	Katsina	2	34	66	6633	0	186	2.80	11	155
4	Borno	5	21	335	5952	3	67	1.13	0	129
5	Adamawa	2	8	74	2498	0	40	1.60	16	83
6	Yobe	3	10	63	2018	0	83	4.11	0	104
7	Kano	3	38	13	1896	0	70	3.69	0	21
8	Sokoto	0	14	0	1609	0	84	5.34	0	25
9	Niger	0	18	0	584	0	29	5.12	0	10
10	Gombe	-	5	-	432	-	10	2.39	0	60
11	Kaduna	0	9	0	401	0	25	6.23	0	15
12	Plateau	0	4	0	347	0	6	1.72	3	19
13	FCT	0	5	0	221	0	14	6.33	0	9
14	Kebbi	0	3	0	198	0	7	3.53	0	5
15	Ebonyi	0	4	0	182	0	7	3.84	0	4
16	Kogi	0	4	0	102	0	8	7.84	0	17
17	Nasarawa	-	2	-	71	-	5	7.04	0	2
18	Anambra	0	1	0	23	0	1	4.35	0	0
19	Jigawa	0	1	0	15	0	1	6.67	0	3
20	Kwara	0	1	0	10	0	0	0.00	1	9
Total		19	206	742	40,771	3	812	1.99	47	754

(-) indicates state yet to report data in week 41

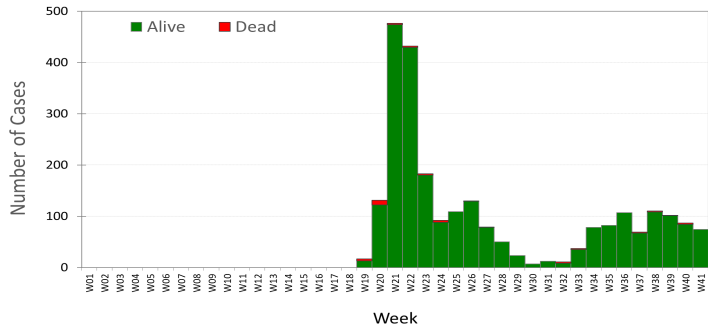
Nigeria: States/LGAs affected by Cholera, Wk01-41 2018



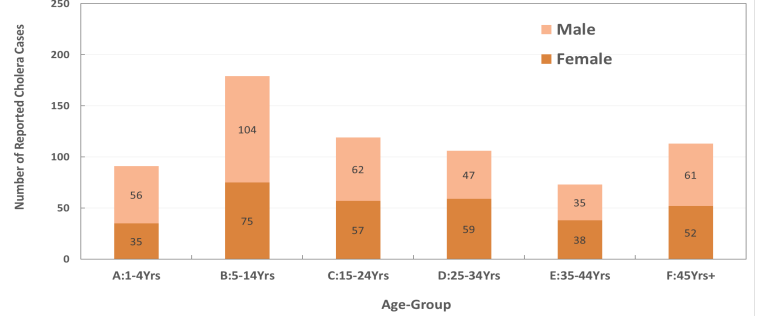
No Cholera Cases Reported
 1-200 Suspected Cholera Cases Reported, 168 LGAs (20 States)
 > 200 Suspected Cholera Cases Reported: 38 LGAs (11 States)
 1-10 Deaths Reported, 108 LGAs (19 States)
 > 10 Deaths Reported: 25 LGAs (8 States)
 Specimen Positive = 755 (Culture=47, RDT=754)
Affected: States = 20; LGAs = 206; Total Suspected Cases = 40,771; Total Deaths = 812



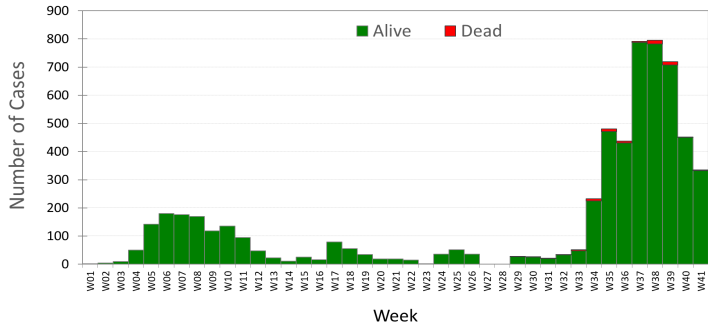
Adamawa: Reported Cholera Cases by Week, WK01- 41 2018



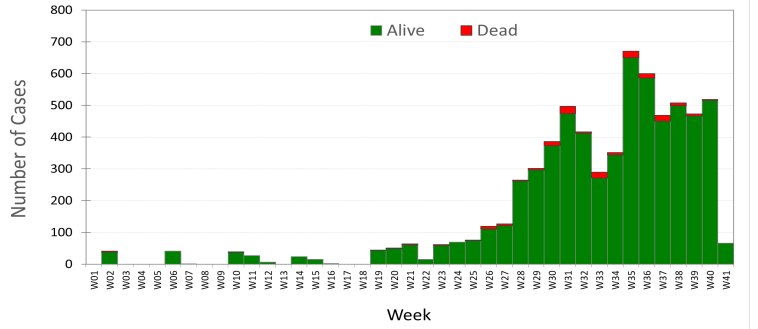
Positive Specimen: Age-Sex Distribution of Reported Cholera Cases WK 01-41, 2018



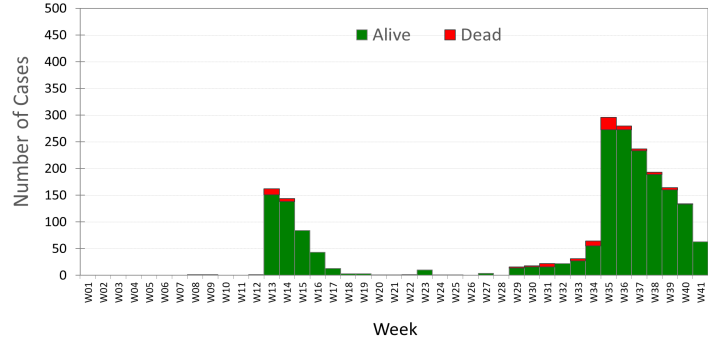
Borno: Reported Cholera Cases by Week, WK01- 41 2018



Katsina: Reported Cholera Cases by Week, WK01- 41 2018



Yobe: Reported Cholera Cases by Week, WK01- 41 2018



Zamfara: Reported Cholera Cases by Week, WK01- 41 2018

