

YELLOW FEVER SITUATION REPORT

Serial Number: 008	August 2024 Monthly Sitrep
Epi Week:	31 - 35 as at 31 ST August 2024
Reporting Month:	August 2024



The information contained in this document is confidential, privileged and only for the intended recipient and may not be used, published, or redistributed to the public

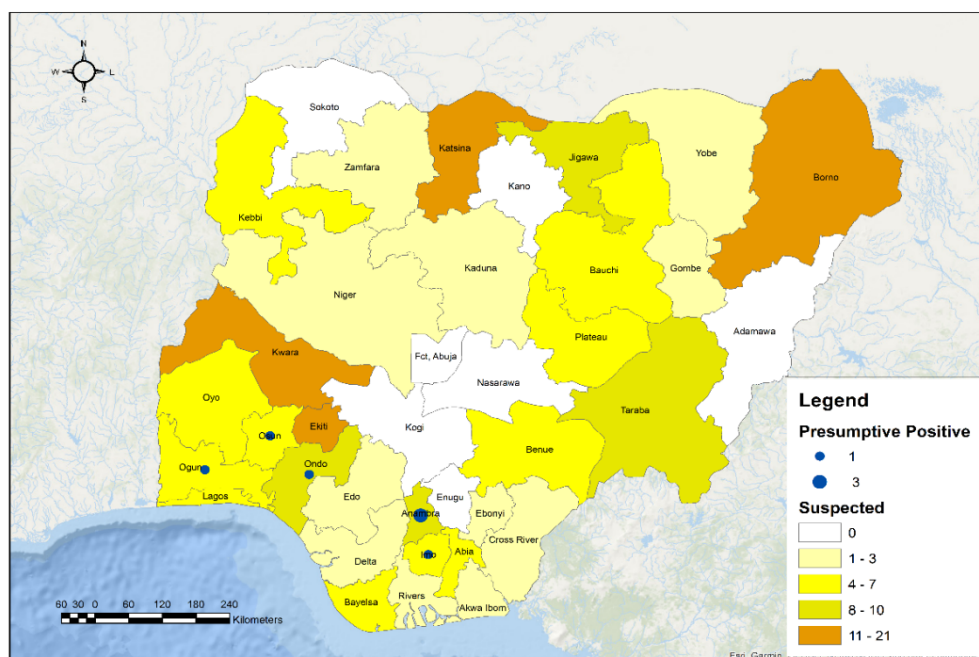
REPORTING MONTH: AUGUST 2024

The information contained in this document is confidential, privileged and only for the intended recipient and may not be used, published or redistributed to the public

HIGHLIGHTS

REPORTING PERIOD: 1ST JANUARY 2024 – 31ST AUGUST 2024

- The Nigeria Centre for Disease Control & Prevention (NCDC) continues to monitor reports of yellow fever cases in Nigeria.
- A total of 161 suspected cases were reported from 116 Local Government Areas (LGAs) across 31 states. The states include Abia (5), Akwa Ibom (2), Anambra (10), Bauchi (4), Bayelsa (6), Benue (4), Borno (12), Cross River (1), Delta (1), Ebonyi (1), Edo (2), Ekiti (12), Gombe (3), Imo (6), Jigawa (10), Kaduna (3), Katsina (13), Kebbi (5), Kwara (13), Lagos (5), Niger (1), Ogun (4), Ondo (9), Osun (4), Oyo (6), Plateau (6), Rivers (1), Taraba (8), Yobe (1) and Zamfara (3).
- Seven (7)** Presumptive positive cases were reported from the University of Nigeria Teaching Hospital, UNTH [4] and Central Public Health Laboratory, (CPHL) Yaba [3] within the reporting month. These cases were reported from: **Anambra (3)** [Onitsha South (3)], **Imo (1)** [Ahiazu-Mbaise (1)], **Ogun (1)** [Abeokuta-South (1)], **Ondo (1)** [Akoko South West (1)] and **Osun (1)** [Ede South-(1)].
- Six (6) inconclusive cases were recorded from CPHL Lagos (6). These cases were reported from **Ondo (4), Lagos (1) and Ekiti (1)**
- No** confirmed cases were recorded within the reporting month.
- No** death was recorded among suspected cases in the reporting month.



161
SUSPECTED
CASES

31
STATES WITH
SUSPECTED
CASES

0
CONFIRMED
CASES

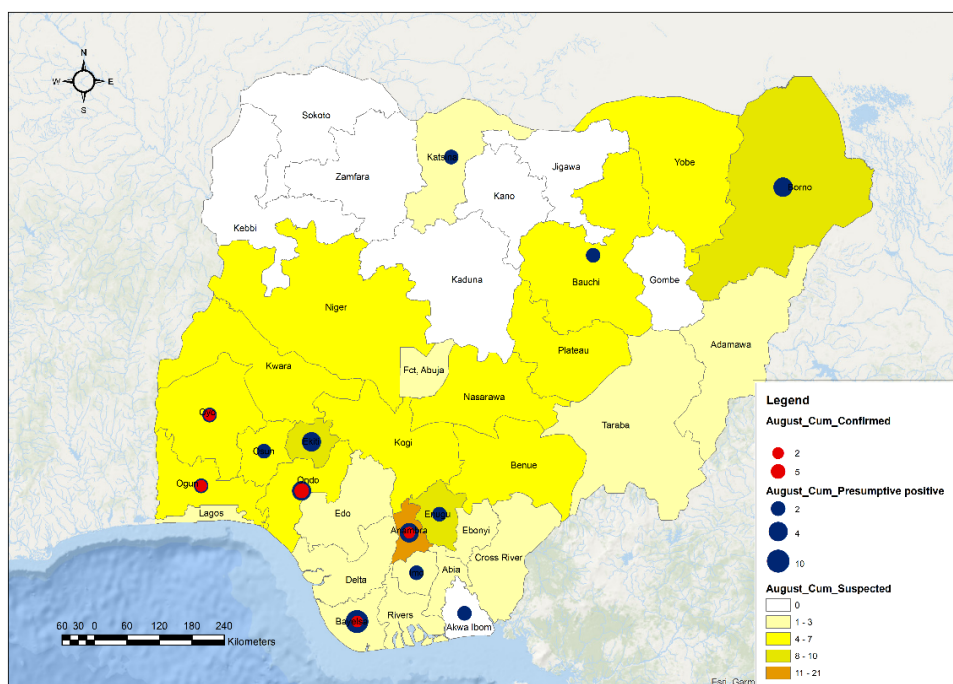
0
STATE WITH
CONFIRMED
CASES

0
STATES WITH
DEATHS IN
CONFIRMED
CASES

0
DEATHS IN
CONFIRMED
CASES

CUMULATIVE FOR 1ST JANUARY 2024 – 31ST AUGUST 2024

- Cumulatively from 1st January 2024 – 31st August 2024, a total of 2,075 suspected cases have been reported from 571 LGAs in 36 states including the FCT.
- The cases were reported from the following states: Abia (33), Adamawa (42), Akwa Ibom (29), Anambra (160), Bauchi (94), Bayelsa (68), Benue (47), Borno (93), Cross River (30), Delta (29), Ebonyi (12), Edo (48), Ekiti (85), Enugu (100), FCT (5), Gombe (33), Imo (40), Jigawa (127), Kaduna (37), Kano (10), Katsina (187), Kebbi (70), Kogi (50), Kwara (71), Lagos (17), Nasarawa (45), Niger (33), Ogun (69), Ondo (62), Osun (42), Oyo (47), Plateau (75), Rivers (33), Sokoto (35), Taraba (49), Yobe (23) and Zamfara (44).
- Total of **Forty-two (42)** presumptive positive and **twenty-five (25)** inconclusive results were recorded from the Nigeria Laboratory networks.
- These **presumptive positives** were recorded from CPHL Lagos (15), NRL Abuja (3), UNTH Enugu (8), University of Benin Teaching Hospital, (UBTH) Benin (10), University of Maiduguri Teaching Hospital, (UMTH) Maiduguri (6), while the **inconclusive** cases are from the UBTH, Benin (3), UNTH, Enugu (5), NRL, Abuja (1) and CPHL, Lagos (16). These cases were from: Anambra (2), Akwa Ibom (2), Bauchi (1), Ekiti (2), Enugu (2), Imo (1), Lagos (1), Ogun (2), Ondo (6), Osun (2), Oyo (3), Rivers (1). These samples have been shipped to IP Dakar for confirmation.
- **Eleven (11)** confirmed cases were recorded within the reporting month. These cases were from: Anambra (2), Bayelsa (2), Ogun (1), Ondo (5) and Oyo (1).
- **One (1)** death has been recorded from confirmed cases [**CFR = 20%**].
- Male to female ratio for suspected cases was **1.1:1** with males 1088 (52.4%) and females 987 (47.6%)
- One thousand, six hundred and five (77.3%) of suspected cases were predominantly aged 30 years and below.
- Two hundred and fifty-four (12.2%) of 2,075 suspected cases received at least one dose of the yellow fever vaccine.
- The NCDC is coordinating response activities through the National Multi-agency Yellow Fever Technical Working Group (YF TWG).



36 + FCT
STATES WITH
SUSPECTED
CASES

2,075
SUSPECTED
CASES

11
CONFIRMED
CASES

5
STATES WITH
CONFIRMED
CASES

1
STATES WITH
DEATHS IN
CONFIRMED
CASES

1
DEATHS IN
CONFIRMED
CASES

Table 1: Summary of yellow fever cases in Nigeria from 1st January – 31st August 2024

State	# Suspected Cases	# LGAs with suspected cases	# LGAs with confirmed cases	Laboratory Results					Deaths	
				Samples positive (IgM) & Inconclusive in NG)	LGAs with positive (IgM) & Inconclusive in NG)	Confirmed Cases (PCR)	Confirmed Cases (IP Dakar)	Total Confirmed Cases	# Deaths among Confirmed Cases [CFR] (%)	# Deaths among All Cases [CFR](%)
Abia	33	12	-	-	-	-	-	-	-	-
Adamawa	42	16	-	-	-	-	-	-	-	-
Akwa Ibom	29	19	-	3	3	-	-	-	-	-
Anambra	160	21	2	8	5	-	2	2	-	-
Bauchi	94	17	-	2	2	-	-	-	-	-
Bayelsa	68	10	2	10	5	2	-	2	1	1
Benue	47	19	-	-	-	-	-	-	-	-
Borno	93	24	-	6	5	-	-	-	-	-
Cross River	30	15	-	-	-	-	-	-	-	-
Delta	29	16	-	-	-	-	-	-	-	-
Ebonyi	12	5	-	-	-	-	-	-	-	-
Edo	48	19	-	-	-	-	-	-	-	-
Ekiti	85	16	-	7	5	-	-	-	-	-
Enugu	100	14	-	3	1	-	-	-	-	-
FCT Abuja	5	3		-	-	-	-	-	-	-
Gombe	33	6	-	-	-	-	-	-	-	-
Imo	40	20	-	2	2	-	-	-	-	-
Jigawa	127	24	-	-	-	-	-	-	-	-
Kaduna	37	13	-	-	-	-	-	-	-	-
Kano	10	8	-	-	-	-	-	-	-	-
Katsina	187	30	-	1	1	-	-	-	-	-
Kebbi	70	17	-	-	-	-	-	-	-	-
Kogi	50	18	-	-	-	-	-	-	-	-
Kwara	71	18	-	-	-	-	-	-	-	-
Lagos	17	11	-	1	1	-	-	-	-	-
Nasarawa	45	13	-	-	-	-	-	-	-	-
Niger	34	11	-	-	-	-	-	-	-	-
Ogun	69	18	1	4	4	-	1	1	-	-
Ondo	62	14	4	12	7	-	5	5	-	-
Osun	42	22	-	3	3	-	-	-	-	-
Oyo	47	23	1	4	3	-	1	1	-	-
Plateau	75	20	-	-	-	-	-	-	-	-
Rivers	33	15	-	1	1	-	-	-	-	-
Sokoto	35	9	-	-	-	-	-	-	-	-
Taraba	49	15	-	-	-	-	-	-	-	-
Yobe	23	8	-	-	-	-	-	-	-	-
Zamfara	44	12	-	-	-	-	-	-	-	-
TOTAL	2075	571 (73.8%)	10 (1.3%)	67 (3.2%)	48 (6.2%)	2 (0.1%)	9 (0.4%)	11 (0.5%)	1 (20%)	1 (0.1%)

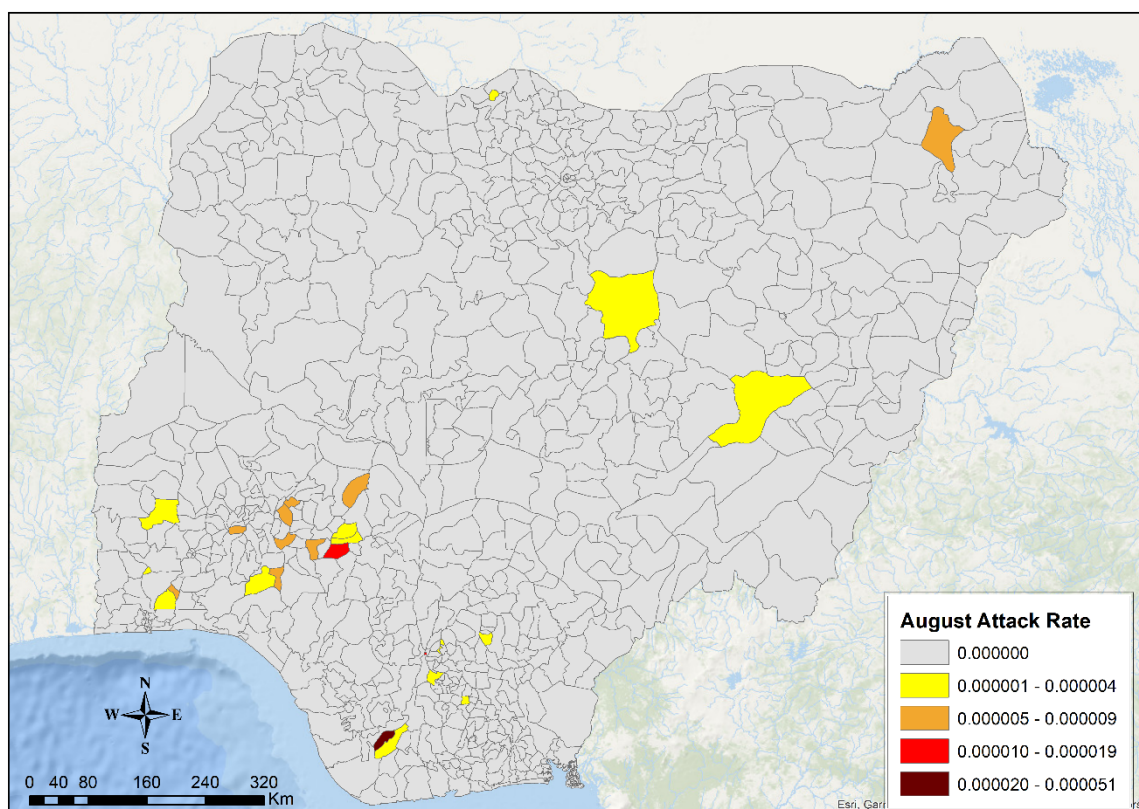


Figure 1: Map of Nigeria showing yellow fever outbreak attack rates in affected LGAs for August 2024

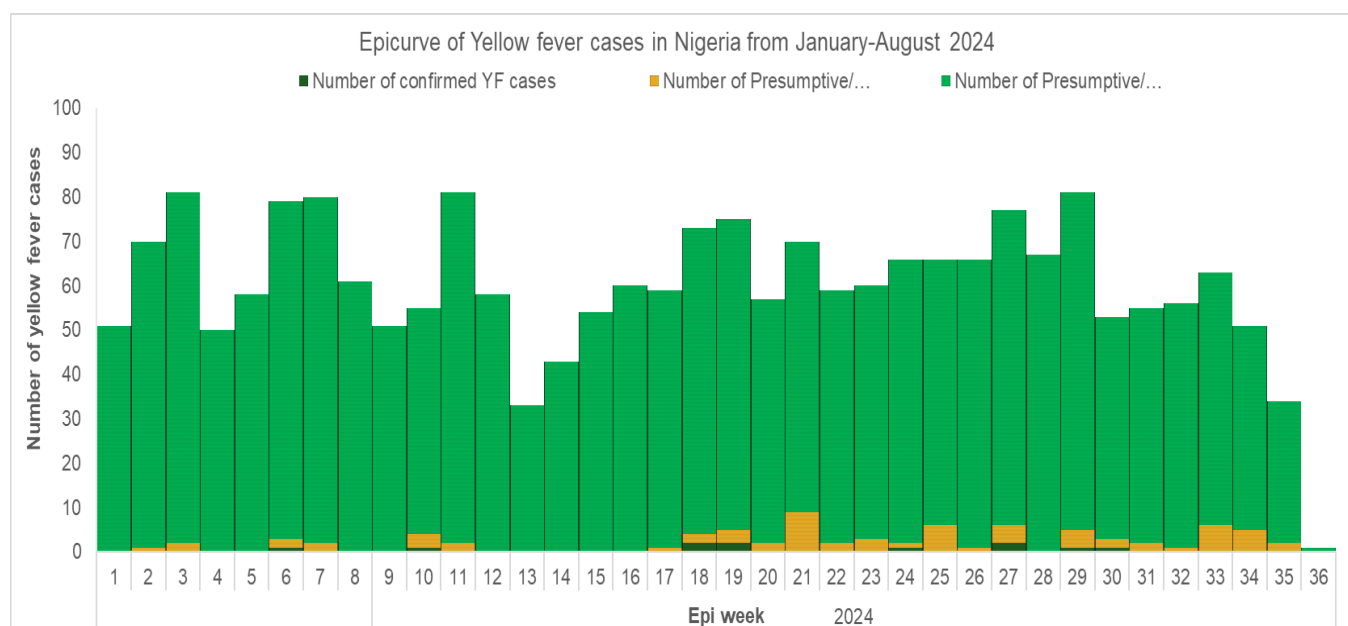


Figure 2: Epicurve of yellow fever cases in Nigeria from 1st January – 31st August 2024

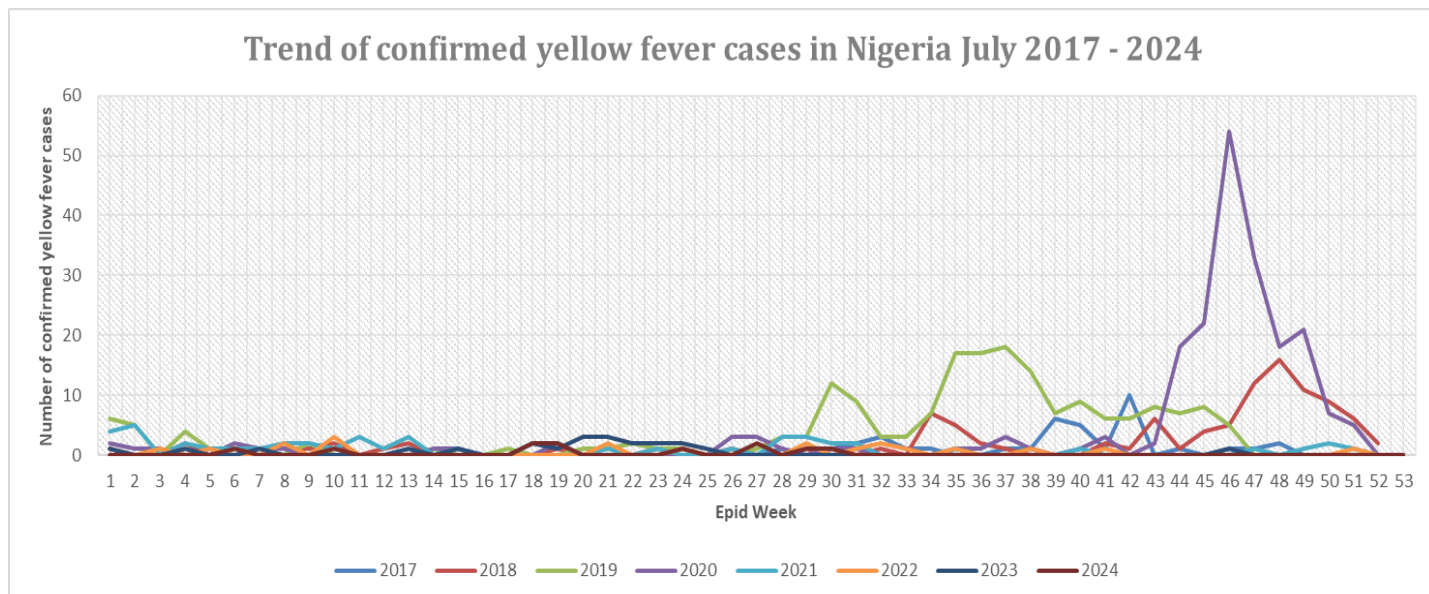


Figure 3: Trend of confirmed yellow fever cases in Nigeria 2017 – August 2024

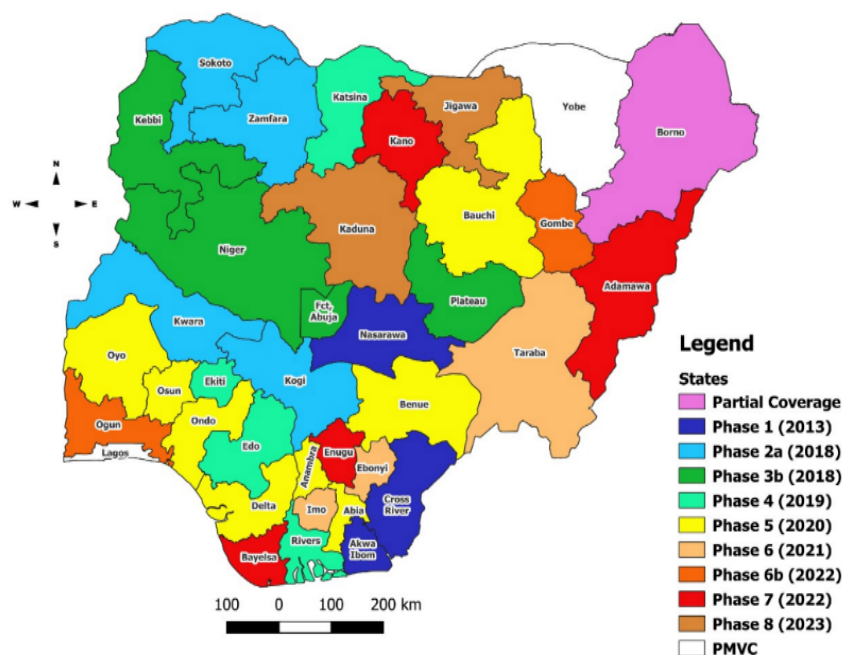


Figure 4: Map of Nigeria showing states and years of implementation of yellow fever mass vaccination campaigns from 2013 – 2024

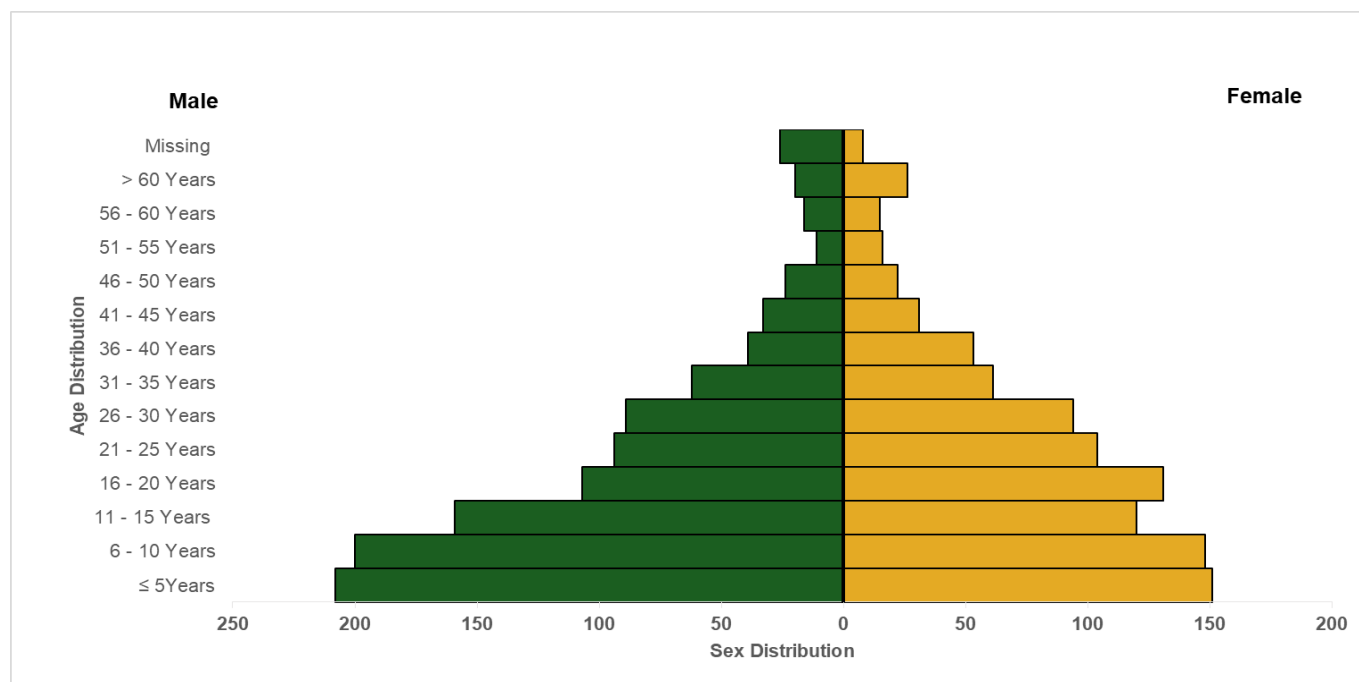


Figure : Age and sex distribution of yellow fever cases in Nigeria from January – August 2024

Partners

