

GENERAL FACT SHEET – DATA AS AT 8th SEPTEMBER 2020

Table 1: States with reported laboratory-confirmed COVID-19 cases, recoveries, deaths, samples tested and days since last reported case

STATES	CONFIRMED CASES		DISCHARGED CASES		DEATHS		TOTAL ACTIVE CASES	TOTAL SAMPLE TESTED	DAYS SINCE LAST REPORTED CASE
	TOTAL	NEW	TOTAL	NEW	TOTAL	NEW			
Lagos	18,422	33	15,237	4	203	1	2,982	104,532	0
FCT	5,335	25	1,624	0	69	2	3,642	51,101	0
Oyo	3,201	7	1,961	0	38	0	1,202	21,154	0
Plateau	2,928	183	1,809	24	30	0	1,089	26,562	0
Edo	2,602	2	2,404	0	100	0	98	15,371	0
Kaduna	2,214	0	2,099	0	32	0	83	16,999	1
Rivers	2,193	2	2,075	8	58	0	60	18,632	0
Delta	1,768	0	1,603	0	48	0	117	9,227	3
Kano	1,728	0	1,604	0	54	0	70	43,906	1
Ogun	1,703	16	1,639	15	26	0	38	11,990	0
Ondo	1,566	5	1,443	45	33	1	90	7,069	0
Enugu	1,184	0	1,088	0	21	0	75	4,339	4
Ebonyi	1,030	0	986	0	30	0	14	5,692	1
Kwara	987	5	794	0	25	0	168	5,338	0
Katsina	819	0	457	0	24	0	338	13,416	1
Abia	816	0	712	0	8	0	96	6,354	1
Osun	802	0	754	0	17	0	31	3,907	1
Gombe	746	2	643	0	23	0	80	12,568	0
Borno	741	0	703	0	36	0	2	11,214	8
Bauchi	670	0	644	0	14	0	12	7,783	2
Imo	537	3	211	0	12	1	314	3,421	0
Benue	460	0	291	0	9	0	160	3,197	7
Nasarawa	441	3	298	0	12	0	131	3,331	0
Bayelsa	391	0	363	0	21	0	7	1,647	10
Jigawa	322	0	308	0	11	0	3	2,872	54
Ekiti	293	6	253	0	5	0	35	5,175	0
Akwa Ibom	283	1	247	5	8	0	28	2,324	0
Niger	244	0	216	0	12	0	16	1,794	4
Adamawa	228	0	180	0	15	0	33	2,059	8
Anambra	226	3	181	0	19	0	26	1,387	0
Sokoto	159	0	142	0	17	0	0	2,434	8
Kebbi	93	0	84	2	8	0	1	855	11
Taraba	91	0	73	0	6	1	12	745	1
Cross River	83	0	73	0	8	0	2	1,140	5
Zamfara	78	0	73	0	5	0	0	404	19
Yobe	67	0	59	0	8	0	0	530	40
Kogi	5	0	3	0	2	0	0	243	67
Total	55,456	296	43,334	103	1,067	6	11,055	430,712	

States, including FCT, are arranged in descending order by number of total confirmed cases and then alphabetical order

SELECTED CHARTS

Figure 2: Daily Epidemic Curve of Confirmed Cases (WK9 – WK37)

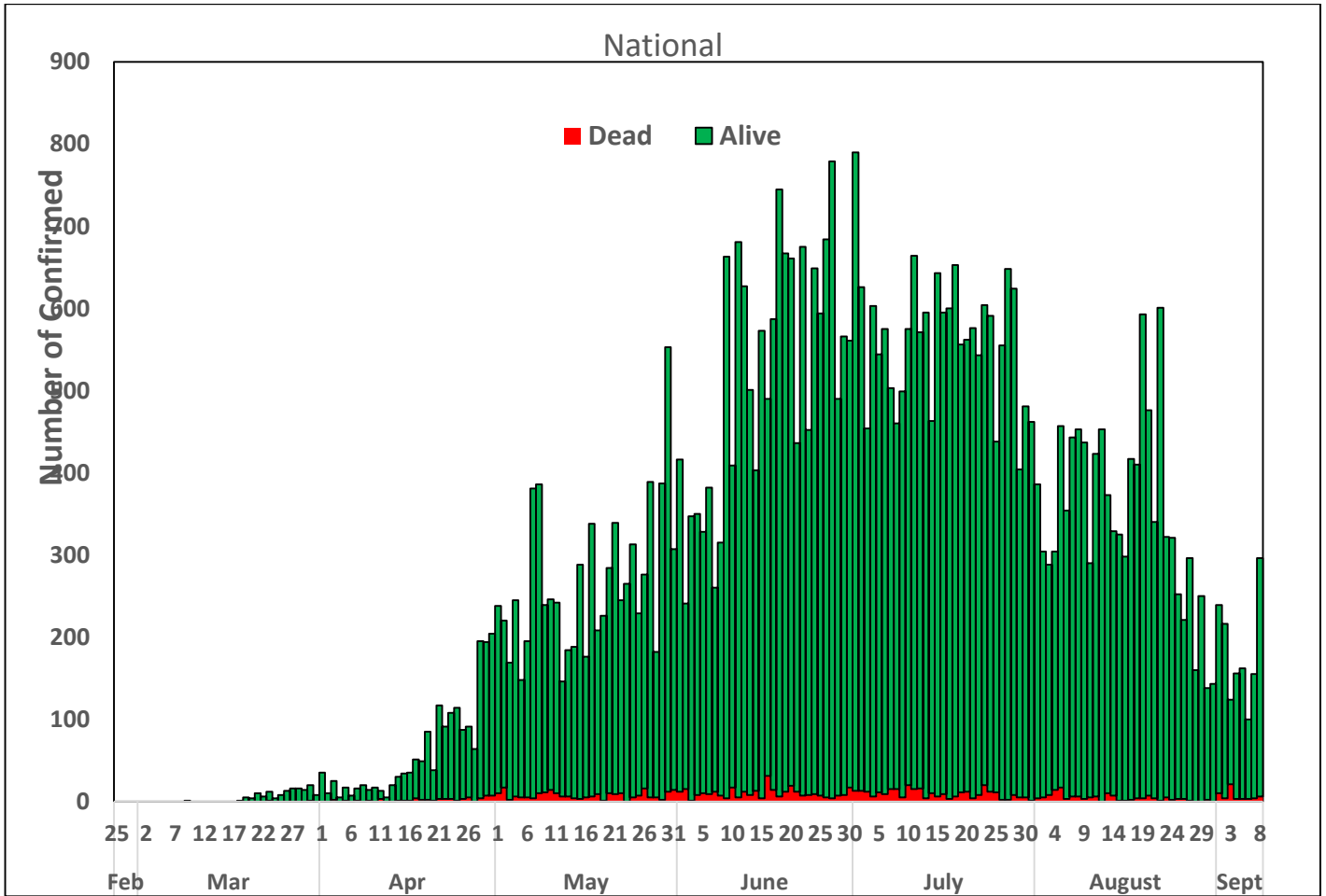
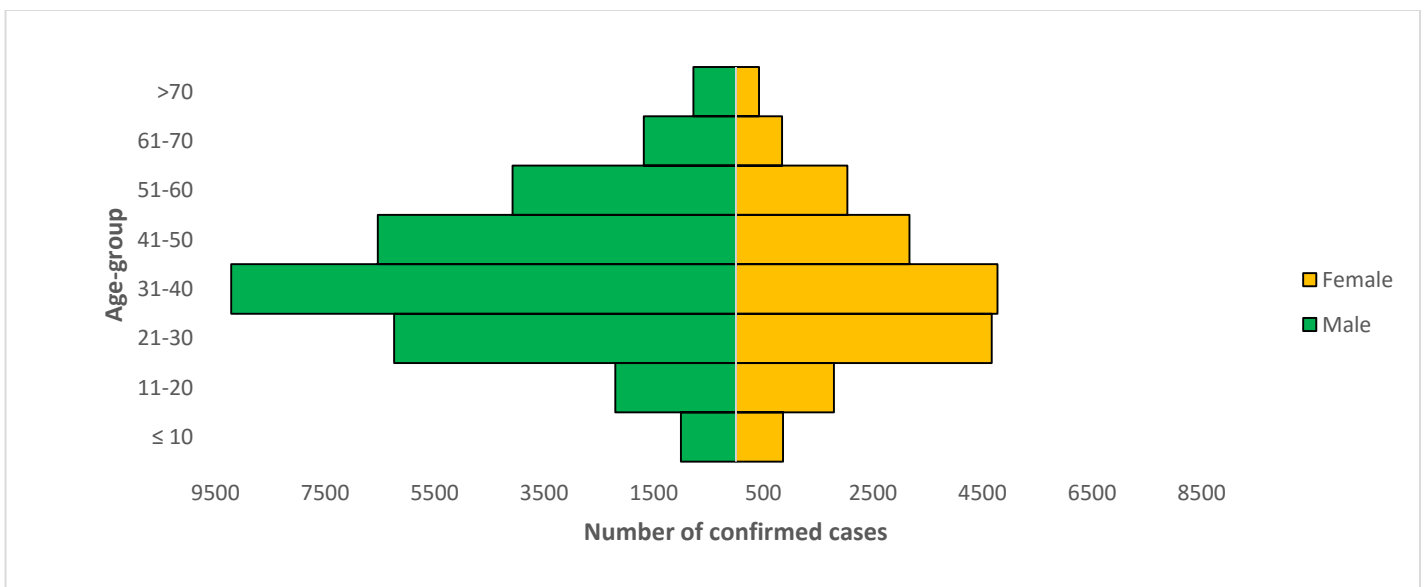


Figure 3: Age-Sex Distribution of Confirmed Cases (WK9 – WK37)



PREPAREDNESS

Since the confirmation of the first case on 27th February 2020, the NCDC has released advisories and statements to help Nigerians and affected groups in particular to respond to the pandemic

- NCDC recently published the first edition of a quick reference guide on setting up sample collection centre - [A step by step guide on setting up a sample collection centre](#)
- NCDC has launched an online course on [Infection, Prevention and Control \(IPC\) for COVID-19](#) NCDC eLearning platform
- Ahead of forthcoming elections in the country, NCDC has issued [Guidelines for Conducting Elections During the COVID-19 Outbreak in Nigeria](#).
- To protect our elders, and those with pre-existing medical conditions, NCDC has issued an [Advisory for Vulnerable Groups](#).
- NCDC has released [guidelines on the re-opening of places for worship](#).
- NCDC has released [Strategies to Improve Surveillance for COVID-19 Guidance for States](#)
- The Nigeria Police Force has released COVID-19 operational guidelines for the [Police and other Law Enforcement Agencies in Nigeria](#)
- Guidelines have been issued for the [safe transportation of remains of persons suspected or confirmed to have died of COVID-19](#)
- Information on diagnostics of the COVID-19 virus can be found in our [detailed FAQ document](#).
- To increase our testing capacity, NCDC has issued guidelines for the [integration of private labs](#).
- Guidelines for [businesses and employers](#) have been updated.
- NCDC has updated its [case definition](#) , [community case definition](#) and [case management guide](#).
- NCDC releases periodic [public health advisories](#) to Nigerians on the COVID-19 disease.
- To adhere to post-lockdown measures, NCDC has released an [advisory on the use of face masks](#), as well as information on the [Use of Cloth face masks](#) and [how to make your cloth face masks](#).
- NCDC has released guidelines for the [management of pregnant women and nursing mothers](#) during the pandemic.
- To address burials of loved ones who die from COVID-19, guidelines have been issued to advise on the [management of dead bodies](#).
- For health centres managing cases, the following documents have been released- a guideline for the [Rational Use of Personal Protective Equipment in the care of COVID-19 cases](#).
- As part of plans to increase the testing capacity of the country, the NCDC published a [National Strategy to Scale Up Access to Coronavirus Disease Testing in Nigeria](#) document.
- The Presidential Task Force has published policies and announcements on COVID-19 [available on the website of the Presidency](#) – including presidential addresses, task force updates and information on livelihood and economic support.

RESPONSE

On 28th February 2020, a multi-sectoral Emergency Operations Centre (EOC) was activated at Level 3 – the highest emergency level in Nigeria –led by NCDC in close coordination with the State Public Health EOCs (PHEOC).

- **Installed a biosafety cabinet for the molecular laboratory at Federal Medical Centre (FMC), Umuahia, Abia State**
- **Developed of a system for tracking health facilities from hotspot areas accessing online NCDC training package on Infection Prevention and Control (IPC)**
- **Collaborated with stakeholders to produce jingles and other behavioural change Information, Education and Communication (IEC) materials to address rumours at the community level**
- **Conducted media appearances and chats to discuss the COVID-19 outbreak response and update the general public on preventive measures to ensure safety**

- Engaged with the management of Lagoon Hospital, Lagos and conducted training of 11 non-clinical Staff on IPC
- All education materials can be found via www.covid19.ncdc.gov.ng