



# COVID-19 SITUATION REPORT

## WEEKLY EPIDEMIOLOGICAL REPORT 3

Epi Week 44: 26<sup>th</sup> October – 1<sup>st</sup> November 2020

DATA AS REPORTED AND ACCURATE BY NCDC AS AT MIDNIGHT 1<sup>ST</sup> NOVEMBER 2020

### STATE OF THE NATION

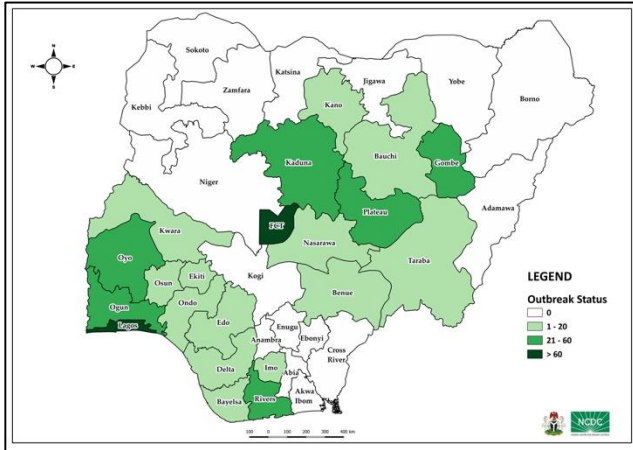


Fig 1. Distribution of cases (EpiWeek 44)

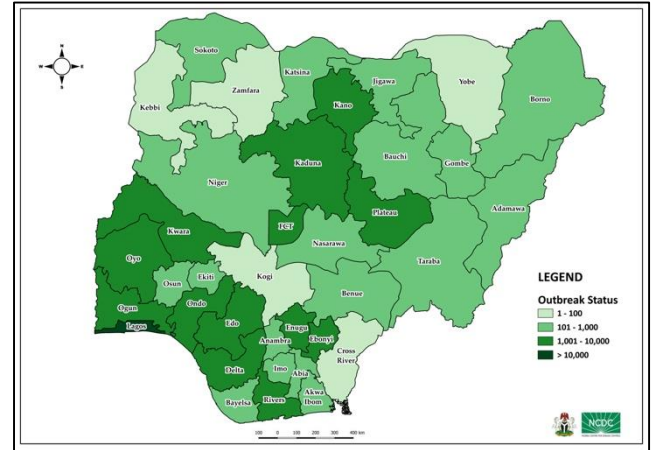


Fig 2. Distribution of cumulative cases

### HIGHLIGHTS

- In Week 44, the number of new confirmed cases increased to **972** from **552** in week 43. These were reported in **21** states (Tables 1 & 2).
- In Week 44, the number of discharged cases increased to **1,325** from **854** in week 43. These were reported in **22** states (Tables 1 & 3).
- Cumulatively, since the outbreak began in Week **9**, there have been **1,146** deaths reported with a case fatality rate (CFR) of **1.8%** (Tables 1 & 4).
- The number of states, and the FCT, that have reported a death in the last one week are **6** (Tables 1 & 4).
- In Week 44, the number of international travellers with a positive result after the 7<sup>th</sup> day of arrival increased to **6** from **4** in week 43.
- In Africa, the count for confirmed COVID-19 cases is **1,785,714** with **42,899** resulting in a case fatality rate of **2.4%**
- Globally, the count for confirmed COVID-19 cases is **45,942,902** with **1,192,644** deaths resulting in a case fatality rate of **2.6%**

## GENERAL FACT SHEET – DATA AS AT 1<sup>ST</sup> NOVEMBER 2020

Table 1: States with reported laboratory-confirmed COVID-19 cases, recoveries, deaths, samples tested and days since last reported case

STATES	CONFIRMED		RECOVERIES		DEATHS		TESTING			ACTIVE CASES
	Total	Last Week	Total	Last Week	Total	Last Week	Total	Last Week	Test Positivity rate (One Week)*	
Abia	898	0	872	0	8	0	8,999	354	0.0	18
Adamawa	257	0	238	9	19	0	2,809	241	0.0	0
Akwa Ibom	295	0	287	3	8	0	3,429	131	0.0	0
Anambra	277	0	248	0	19	0	2,549	190	0.0	10
Bauchi	713	3	696	0	14	0	8,953	114	2.6	3
Bayelsa	413	10	381	9	21	0	2,624	100	10.0	11
Benue	493	7	460	25	11	0	4,023	130	5.4	22
Borno	745	0	705	0	36	0	13,108	348	0.0	4
Cross River	87	0	74	0	9	0	1,603	45	0.0	4
Delta	1,814	2	1,737	1	49	0	13,090	252	0.8	28
Ebonyi	1,049	0	1,011	0	30	0	6,189	29	0.0	8
Edo	2,666	18	2,531	9	109	1	18,311	541	3.3	26
Ekiti	335	3	320	4	6	0	6,940	66	4.5	9
Enugu	1,314	0	1,269	0	21	0	8,586	300	0.0	24
FCT	6,118	151	5,345	9	81	2	78,643	3,700	4.1	692
Gombe	937	54	837	90	25	0	24,868	582	9.3	75
Imo	617	3	583	3	12	0	7,286	260	1.2	22
Jigawa	325	0	308	0	11	0	2,985	11	0.0	6
Kaduna	2,655	38	2,567	49	43	1	26,223	725	5.2	45
Kano	1,747	5	1,684	2	54	0	52,893	1,150	0.4	9
Katsina	952	0	928	49	24	0	24,184	265	0.0	0
Kebbi	93	0	84	0	8	0	948	26	0.0	1
Kogi	5	0	3	0	2	0	284	16	0.0	0
Kwara	1,069	2	1,019	0	26	0	6,546	152	1.3	24
Lagos	21,287	480	20,423	623	217	10	141,101	1,019	47.1	647
Nasarawa	482	4	325	0	13	0	6,978	69	5.8	144
Niger	274	0	259	10	12	0	5,823	8	0.0	3
Ogun	2,047	37	1,922	76	30	1	17,347	1,711	2.2	95

STATES	CONFIRMED		RECOVERIES		DEATHS		TESTING			ACTIVE CASES
	Total	Last Week	Total	Last Week	Total	Last Week	Total	Last Week	Test Positivity rate (One Week)*	
<b>Ondo</b>	1,667	<b>1</b>	1,585	0	37	0	8,899	14	7.1	45
<b>Osun</b>	929	<b>6</b>	897	14	20	0	5,425	36	16.7	12
<b>Oyo</b>	3,451	<b>28</b>	2,616	55	43	1	24,192	385	7.3	792
<b>Plateau</b>	3,650	<b>56</b>	3,503	223	33	0	34,944	946	5.9	114
<b>Rivers</b>	2,831	<b>58</b>	2,678	53	59	0	47,508	2,894	2.0	94
<b>Sokoto</b>	165	<b>0</b>	147	2	17	0	6,962	959	0.0	1
<b>Taraba</b>	146	<b>6</b>	107	7	6	0	2,540	11	54.5	33
<b>Yobe</b>	82	<b>0</b>	68	0	8	0	1,191	172	0.0	6
<b>Zamfara</b>	79	<b>0</b>	73	0	5	0	1,128	5	0.0	1
<b>Total</b>	<b>62,964</b>	<b>972</b>	<b>58,790</b>	<b>1,325</b>	<b>1,146</b>	<b>16</b>	<b>630,111</b>	<b>17,957</b>	<b>5.4</b>	<b>3,028</b>

## RETURNING PASSENGERS TESTS

Over the last week, the following laboratories carried out COVID-19 tests for returning passengers:

54Gene (Lagos):	5
54Gene (FCT):	88
MEDICAID (FCT):	72
CEDARCREST (FCT):	85
DNA Labs (FCT):	72
EHA Clinics:	138
<b>TOTAL TESTS:</b>	<b>460</b>

## BACKLOG OF REPORTED TESTS

EHA (FCT):	151
<b>TOTAL TESTS:</b>	<b>151</b>

# DAILY EPICURVE

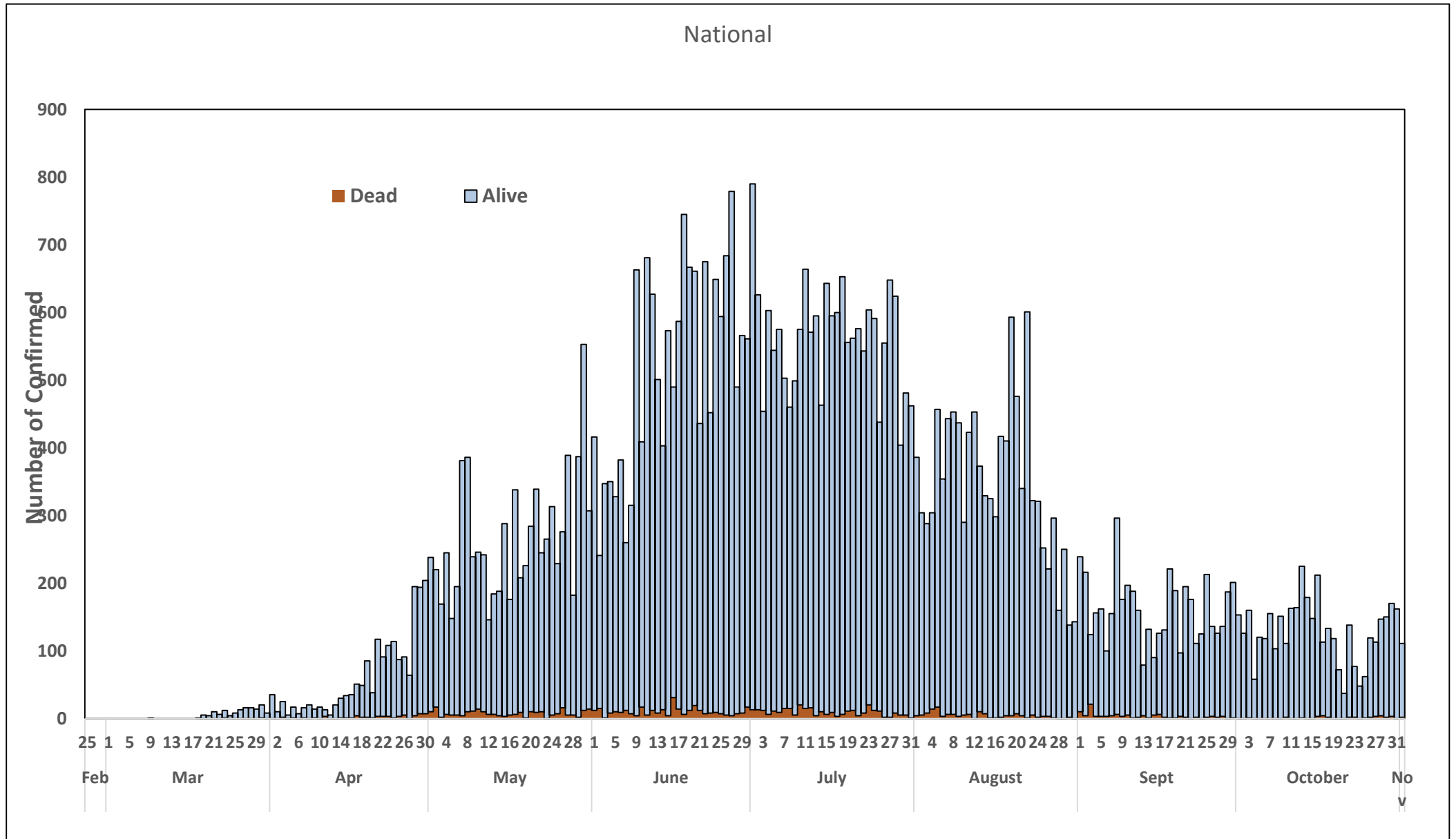


Figure 3: Daily epidemic curve of confirmed cases (WK9 – WK44) as reported per day

## AGE-GENDER BREAKDOWN

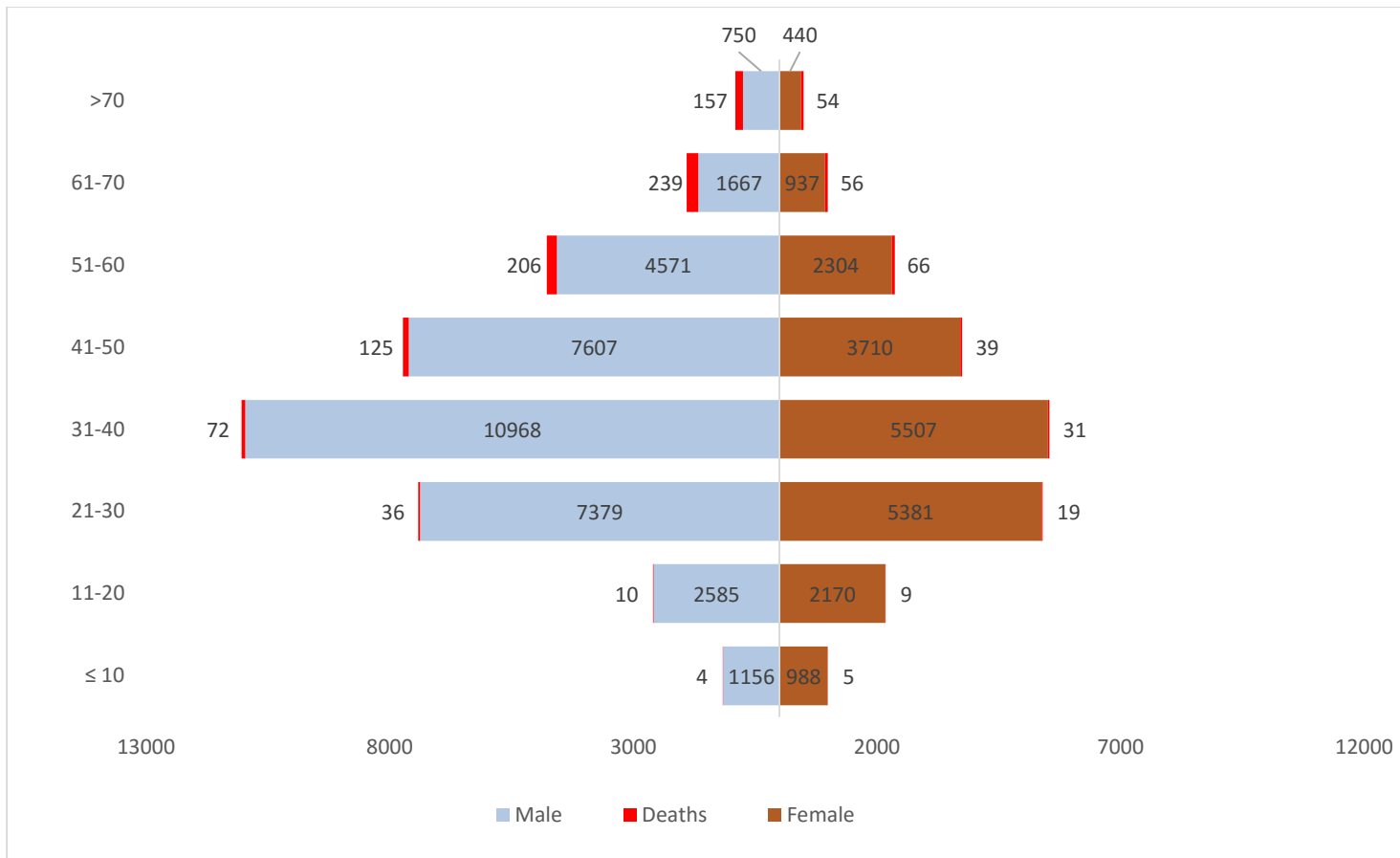


Figure 6: Chart with age and gender breakdown of cases and deaths (Wks 9 – 44)

## RESPONSE COMMODITIES DISTRIBUTION

Table 5: Response Commodities Distributed in Week 44

26th October - 1st November 2020		Personal Protective Equipment (PPE) and commodities																					
S/N	Distribution across Abuja	FACE MASK	HAND SANITIZER 100ML	HYPOCHLORITE	EXAM GLOVES	GOGGLES	SHOECOVER	BIOHAZARD BAG	N95 FACE MASK	FACE SHIELD	GOWN	LIQ. HAND WASH	HEAD COVER	INFRA-RED	Normal Saline	BIOHAZARD BAG	HAND SPRAYER	HEAVY DUTY GLOVES	BUCKET WITH TAP	WASTE BIN	COVERALL PPE	HAND SANITIZER 250-500ML	
1	Aso Villa Screening Team	500	100	0	0	0	0	0	0	0	0	0	0	0	0	0	0	0	0	0	0	0	0
2	National Assembly Sample Collection Centre, FCT	1000	50	12	10	50	100	100	300	120	45	24	100	0	0	0	0	0	0	0	0	0	0
3	NRL Gaduwa, FCT	1000	56	17	0	0	0	0	0	0	0	0	0	0	0	0	0	0	0	0	0	0	0
4	Rotary International	5000	0	0	0	0	0	0	300	0	100	60	0	50	0	0	0	0	0	0	0	0	200
5	National Hospital, FCT	0	0	0	0	0	0	0	0	0	0	0	0	0	200	0	0	0	0	0	0	0	0
6	National Youth Service Corp (NYSC)	15440	1480	0	500	0	0	0	15540	2220	46,620	1480	0	0	0	3700	15	500	37	1000	0	0	0
7	Aminu Kano Teaching Hospital Lab, Kano	0	0	2	6	60	200	200	200	40	0	0	0	0	0	0	0	0	0	0	200	0	0
	<b>TOTAL</b>	<b>22,940</b>	<b>1,686</b>	<b>31</b>	<b>516</b>	<b>110</b>	<b>300</b>	<b>300</b>	<b>16,340</b>	<b>2,380</b>	<b>46,765</b>	<b>1,564</b>	<b>100</b>	<b>50</b>	<b>200</b>	<b>3,700</b>	<b>15</b>	<b>500</b>	<b>37</b>	<b>1,000</b>	<b>200</b>	<b>200</b>	<b>200</b>

## **IN FOCUS: WORLD BANK REGIONAL DISEASE SURVEILLANCE SYSTEMS ENHANCEMENT (REDISSE) PROJECT**

State governments are at the heart of executing the necessary policies and plans to curb the transmission of COVID-19 in Nigeria. A few months ago, the Nigeria Centre for Disease Control with funding from the World Bank REDISSE project, supported each state with One Hundred Million (₦100,000,000.00) naira to enhance their work.

States were required to submit a COVID-19 Incident Action Plan (IAP) outlining various activities targeted at curbing transmission to access the funds. These activities include coordination, risk communication, surveillance, Infection Prevention and Control (IPC), case management and logistics.

NCDC and the World Bank worked with each state to monitor and support their progress. We receive daily reports from the technical assistants and tracked the progress in the implementation of planned activities every week. The data so far is encouraging, with 35% of all activities in the project nationwide completed and 37% ongoing. Efforts are being made to support states with identified challenges. These range from low sample collection and testing, inadequate dedicated staff, insufficient community mobilisation amongst others.

We continue to engage the leadership of the States' Public Emergency Operations Centre to provide technical support as well as the logistics within the resources available at NCDC. Together, with support from public and civil servants at all levels of government, we will keep pushing to ensure a safer and healthier Nigeria for us all.

## RESPONSE

On 28<sup>th</sup> February 2020, a multi-sectoral Emergency Operations Centre (EOC) was activated at Level 3 – the highest emergency level in Nigeria –led by NCDC in close coordination with the State Public Health EOCs (PHEOC) and through the deployment of **43** RRTs to states.

## COORDINATION

- **Tracking of prioritised State Incident Action Plan (IAP) implementation performance in 35 states**
- **Evaluated private laboratories testing returning travellers through key performance indicators**
- **Conducted laboratory training of trainers (TOT) on sample collection and rapid diagnostic testing for NYSC camp re-opening**
- **Training of healthcare workers on Infection Prevention and Control (IPC), Surveillance and Risk Communication and Community Engagement (RCCE) has been conducted across the hotspots LGAs**
- **Conducted assessment of schools' readiness and preparedness for re-opening, following closure due to COVID-19-related curfew**
- **Developed Information Education and Communication materials for NYSC re-opening**
- **Trained state communication teams for NYSC reopening**
- **Engaging with State IPC Focal Persons on Nationwide NYSC orientation camp assessment**
- **Trained community Health workers from across all wards/LGAs of Kaduna State supported by partners**
- **Developed advisory on use of Rapid Diagnostics Tests (RDT) Kits for States**
- **Conducted media appearance on Human Right radio, WAZOBIA, Kano Radio and FM Enugu on with discussion on safe school resumption**
- **Ongoing airing of new jingles by Federal Ministry of Information**
- **Conducted strategic engagement with State Epidemiologist (SEs) and thematic COVID-19 response team leads to identify state specific challenges and improve on the ongoing response**



## PREPAREDNESS

Since the confirmation of the first case on 27<sup>th</sup> February 2020, the NCDC has released advisories and statements to help Nigerians and affected groups in particular to respond to the pandemic

- NCDC published guidance on the use of antigen RDTs: [Guidance on the use of Antigen Rapid Diagnostic Kits for diagnosis of SARS-CoV-2 infection in Nigeria](#)
- NCDC published guidance on safe school re-opening: [Public Health guidance for Safe School re-opening in Nigeria](#)
- NCDC published second interim guidance – Infection Prevention and Control: [Recommendations during health care provision for suspected and confirmed cases of COVID-19](#)
- NCDC recently published the first edition of a quick reference guide on setting up sample collection centre - [A step by step guide on setting up a sample collection centre](#)
- NCDC has launched an online course on [Infection, Prevention and Control \(IPC\) for COVID-19](#) NCDC eLearning platform
- Ahead of forthcoming elections in the country, NCDC has issued [Guidelines for Conducting Elections During the COVID-19 Outbreak in Nigeria](#).
- To protect our elders, and those with pre-existing medical conditions, NCDC has issued an [Advisory for Vulnerable Groups](#).
- NCDC has released [guidelines on the re-opening of places for worship](#).
- NCDC has released [Strategies to Improve Surveillance for COVID-19 Guidance for States](#)
- The Nigeria Police Force has released COVID-19 operational guidelines for the [Police and other Law Enforcement Agencies](#) in Nigeria
- Guidelines have been issued for the [safe transportation of remains of persons suspected or confirmed to have died of COVID-19](#)
- Information on diagnostics of the COVID-19 virus can be found in our [detailed FAQ document](#).
- To increase our testing capacity, NCDC has issued guidelines for the [integration of private labs](#).
- Guidelines for [businesses and employers](#) have been updated.
- NCDC has updated its [case definition](#) , [community case definition](#) and [case management guide](#).
- NCDC releases periodic [public health advisories](#) to Nigerians on the COVID-19 disease.
- To adhere to post-lockdown measures, NCDC has released an [advisory on the use of face masks](#), as well as information on the [Use of Cloth face masks](#) and [how to make your cloth face masks](#).
- NCDC has released guidelines for the [management of pregnant women and nursing mothers](#) during the pandemic.
- To address burials of loved ones who die from COVID-19, guidelines have been issued to advise on the [management of dead bodies](#).
- For health centres managing cases, the following documents have been released- a guideline for the [Rational Use of Personal Protective Equipment in the care of COVID-19 cases](#).
- As part of plans to increase the testing capacity of the country, the NCDC published a [National Strategy to Scale Up Access to Coronavirus Disease Testing in Nigeria](#) document.
- The Presidential Task Force has published policies and announcements on COVID-19 [available on the website of the Presidency](#) – including presidential addresses, task force updates and information on livelihood and economic support.

## INFORMATION RESOURCES

- Nigeria Centre for Disease Control: [www.covid19.ncdc.gov.ng](http://www.covid19.ncdc.gov.ng) | [www.ncdc.gov.ng](http://www.ncdc.gov.ng)
- Nigerian Presidency Website on COVID-19: [www.statehouse.gov.ng/COVID19](http://www.statehouse.gov.ng/COVID19)
- Africa CDC: [www.africa.cdc.org](http://www.africa.cdc.org) | <https://africacdc.org/covid-19/> (source for Africa updates)
- WHO Coronavirus Disease (COVID-19) Dashboard (source for global updates) <https://covid19.who.int/>