



NIGERIA CENTRE FOR DISEASE CONTROL

Weekly Epidemiological Report

Main Highlight of the week

RESPONDING TO AN OUTBREAK OF HEPATITIS E



Hepatitis E is a liver disease caused by infection with a virus known as hepatitis E virus (HEV). Outbreaks of Hepatitis E usually occur as a result of faecal contamination of drinking water supplies. This tends to become more widespread during the rainy season.

As the rainy season continues in Nigeria with incidence of flood across some parts of the country, it is important for communities to be prepared for outbreaks of water-borne diseases such as Hepatitis E.

Like other outbreaks, response activities to an outbreak of Hepatitis E in States should be led by the State Ministry of Health, community oriented and carried out in a stepwise manner as seen below:

1. Prepare for an outbreak-This is important especially in emergency or high risk situations e.g. Refugee camps, Internally Displaced Persons camp
 - Develop a basic plan or checklist for resource requirements in the event of an outbreak
 - Set up a surveillance system to ensure an early warning once there is an increased incidence, particularly in vulnerable populations
 - Establish a microbiological water monitoring system to ensure water safety
 - Develop a written plan for Hepatitis E covering roles and responsibilities, resources, skills and activities required
 - Ensure standard treatment protocols are available to all health facilities and agencies
 - Train clinical workers in case management, laboratory sample collection and transport, and water purification.
 - Ensure stockpiles of essential treatment supplies are available such as intravenous fluids, laboratory sampling kits, transport media and water purification supplies.
 - A competent laboratory is identified for confirmation of cases.
 - Sources of additional supplies are identified.
2. Verify the diagnosis and confirm the existence of an outbreak.
3. Define a case and conduct case-finding.
4. Tabulate and orient data: time, place, person.
5. Take immediate control measures-categorized under three major activities
 - Prevention of exposure: Controlling the source of infection to reduce the risk of the disease spreading to other members of the community. For hepatitis E outbreaks, this is the most important measure, and involves improving the quality and quantity of drinking water, treating and disposing of human waste correctly, improving personal hygiene and preparing safe and clean food.
 - Prevention of infection: Focus should be placed on identifying pregnant women at health facilities, antenatal clinics and other points. Efforts should be targeted at reducing the risk among pregnant women since the infection is more likely to lead to severe disease and death in such women than in the general population. These women should be a priority group for provision of safe water and good sanitation.
 - Prevention of death: Deaths can be minimized through prompt diagnosis and management of cases, including timely referral to a health-care facility. It may be important to avoid administration of unnecessary drugs, as these may be hepatotoxic; such drugs are likely to be particularly harmful for patients with acute hepatitis E.
6. Communicate findings.
7. Implement and evaluate control measures-entails instituting longer term control measures to end the current outbreak and prevent future outbreaks. These measures should be more extensive than earlier control measures and evaluated for effectiveness.

Examples of such measures are: recommending different food safety procedures in public eating places and implementing a better chlorination programme for public water systems. After an outbreak, the outbreak control team must carry out a thorough evaluation of the response to the particular outbreak, including identification of its cause(s), surveillance and detection, level of preparedness, management and control measures during the outbreak. The specific issues that should be evaluated under each heading include the timeliness of detection and adequacy of response, effectiveness, cost, lost opportunities and new/revised policies. The findings of this evaluation should be documented in a written report that contains clear recommendations on the epidemiological characteristics of the epidemic, surveillance, preparedness and control measures carried out

The Nigeria Centre for Disease Control (NCDC) urges all States to commence early preparedness plans for a more coordinated response system in the event of a Hepatitis E outbreak. The NCDC will continue to work with other partners to provide support in outbreak coordination in any affected state.

States are advised to create increased awareness on Hepatitis E infection in their communities and implement preventive measures, in view of the heavy rainfalls recorded recently in the country.

References

1. Water Borne Outbreaks of Hepatitis E: Recognition, investigation and control. Technical Report. Geneva. WHO.2014
2. <https://www.cdc.gov/hepatitis/statistics/surveillanceguidelines.htm>

In the reporting week ending on the 23rd of July, 2017:

- There were 393 new cases of Acute Flaccid Paralysis (AFP) reported. None was confirmed as Polio. The last reported case of Polio in Nigeria was in August 2016. Active case search for AFP is being intensified as Nigeria has assiduously reinvigorated its efforts at eradicating Polio.
- 81 suspected cases of Cholera were reported from eight LGAs in five States with three laboratory confirmed cases and three deaths.
- There were 12 suspected cases of Cerebrospinal Meningitis (CSM) reported from ten LGAs in ten States. Of these, none was laboratory confirmed and no death was recorded. Ongoing surveillance for CSM has been intensified in the States.
- There were 281 suspected cases of Measles reported from 33 States. None was laboratory confirmed and no death was recorded.

In the reporting week, Gombe State failed to send in any report. Timeliness of reporting remains at 82% in both previous and current weeks (Week 28 and 29) while completeness also

remains at 100%. It is very important for all States to ensure timely and complete reporting at all times, especially during an outbreak.

Summary Table 1 (IDSR Weekly Report as at 28/07/2017)

Disease	Variables	Week 28	Week 29		Cumulative Weeks	
		2017	2017	2016	01 - 29, 2017	01 - 29, 2016
AFP	Cases	483	393	288	9,206	7537
	Deaths	0	0	0	0	0
	CFR	0.00%	0.00%	0.00%	0.00%	0.00%
Polio	WPV Types 1 & 3	0	0	0	0	0
	WPV Types 1	0	0	0	0	0
	WPV Types 3	0	0	0	0	0
Cholera	Cases	36	81	7	916	331
	Deaths	2	3	0	23	4
	CFR	5.56%	3.70%	0.00%	2.51%	1.21%
Lassa Fever	Cases	6	5	1	344	746
	Deaths	1	0	0	56	87
	CFR	16.67%	0.00%	0.00%	16.28%	11.66%
CSM	Cases	14	12	13	9723	543
	Deaths	0	0	0	602	29
	CFR	0.00%	0.00%	0.00%	6.19%	5.34%
Measles	Cases	399	281	176	15,148	20773
	Deaths	6	0	1	88	84
	CFR	1.50%	0.00%	0.57%	0.58%	0.40%
Guinea Worm	Cases	0	0	0	0	0
	Deaths	0	0	0	0	0
	CFR	0.00%	0.00%	0.00%	0.00%	0.00%

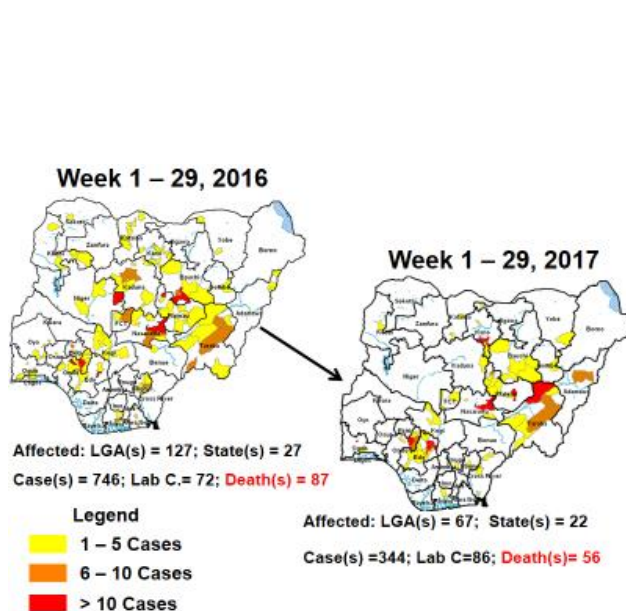
1. Lassa fever

Please note that the data reflects the routine reports i.e. all suspected cases including the laboratory positive and negative cases

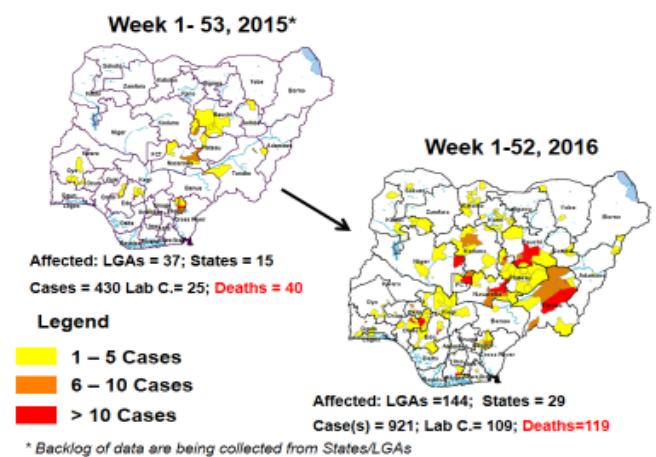
- 1.1. Five suspected cases of Lassa fever were reported from five LGAs (Plateau State) in week 29, 2017 compared with one case from Abuja Municipal Area Council (FCT) at the same period in 2016.
- 1.2. Laboratory results of the five suspected cases are four positives for Lassa fever while one was negative for Lassa fever and other VHF.
- 1.3. Between weeks 1 and 29 (2017), 344 suspected Lassa fever cases with 86 laboratory confirmed cases and 56 deaths (CFR, 16.28%) from 67 LGAs (22 States) were reported compared with 746 suspected cases with 72 laboratory confirmed cases and 87 deaths (CFR, 11.66%) from 127 LGAs (27 States) during the same period in 2016 (Figure 1).
- 1.4. Between weeks 1 and 52 2016, 921 suspected Lassa fever cases with 109 laboratory confirmed cases and 119 deaths (CFR, 12.92%) from 144 LGAs (28 States and FCT) were reported compared with 430 suspected cases with 25 laboratory confirmed cases and 40 deaths (CFR, 9.30%) from 37 LGAs (14 States and FCT) during the same period in 2015 (Figure 2).
- 1.5. Investigation and active case search ongoing in affected States with coordination of response activities by the NCDC with support from partners.
 - 1.5.1. National Lassa Fever Working Group meeting and weekly National Surveillance and Outbreak Response meeting on-going at NCDC to keep abreast of the current Lassa fever situation in the country.
 - 1.5.2. Response materials for VHFs prepositioned across the country by NCDC at the beginning of the dry season
 - 1.5.3. New VHF guidelines have been developed by the NCDC (Interim National Viral Haemorrhagic Fevers Preparedness guidelines and Standard Operating Procedures for Lassa fever management) and are available on the NCDC website.
 - 1.5.4. Ongoing reclassification of reported Lassa fever cases
 - 1.5.5. Ongoing review of the variables for case-based surveillance for VHF
 - 1.5.6. VHF case-based forms completed by affected States are being entered into the new VHF management system. This system allows for the creation of a VHF database for the country.
 - 1.5.7. NCDC team sent to Edo State to support Lassa fever data harmonization & Updating of VHF case-based management database
 - 1.5.8. Confirmed cases are being treated at identified treatment/isolation centres across the States with Ribavirin and necessary supportive management also instituted

- 1.5.9. Onsite support was earlier provided to Ogun, Nasarawa, Taraba, Ondo and Borno States by the NCDC and partners
- 1.5.10. Offsite support provided by NCDC/partners in all affected States
- 1.5.11. NCDC and partners are providing onsite support in Ondo and Plateau State
- 1.5.12. States are enjoined to intensify surveillance and promote Infection, Prevention and Control (IPC) measures in health facilities.

Figure 1: Map of Nigeria showing areas affected by Lassa fever, week 1- 29, 2016 & 2017 and week 1 – 52, 2016



1.1.1. Figure 2: Map of Nigeria showing areas affected by Lassa fever, week 1 - 53, 2015



2. MEASLES

- 2.1. In the reporting week, 281 suspected cases of Measles were reported from 33 States compared with 176 suspected measles cases and one death (CFR, 0.57%) reported from 25 States during the same period in 2016.
- 2.2. So far, 15,148 suspected Measles cases with 108 laboratory confirmed cases and 88 deaths (CFR, 0.59%) have been reported in 2017 from 36 States and FCT (Figure 4) compared with 20,773 suspected cases and 84 deaths (CFR, 0.40%) from 36 States and FCT during the same period in 2016.
- 2.3. In 2016 (week 1 -52), 25,251 suspected Measles cases with 102 deaths (CFR, 0.40%) were reported from 36 States and FCT compared with 24,421 suspected cases with 127 deaths (CFR, 0.52%) during the same period in 2015 (Figure 5)
- 2.4. Response measures include immunization for all vaccine-preventable diseases in some selected/affected wards/LGAs during SIAs, as well as case management.

- 2.5. Scheduled Measles campaigns in the North East were conducted from 12th – 17th January, 2017 in Adamawa, Borno and Yobe States (Phase I) and Phase II from 21st – 25th January, 2017 in Borno State and 4th – 8th February, 2017 in Yobe State
- 2.6. Measles Surveillance Evaluation and Establishment of the burden of Congenital Rubella Syndrome (CRS) in 12 selected States in the six geopolitical zones from the 17th -21st July 2017
- 2.7. Harmonization of measles surveillance data with laboratory confirmed cases

Figure 3: Suspected Measles attack rate by States, week 29, 2017 as at 28th July, 2017

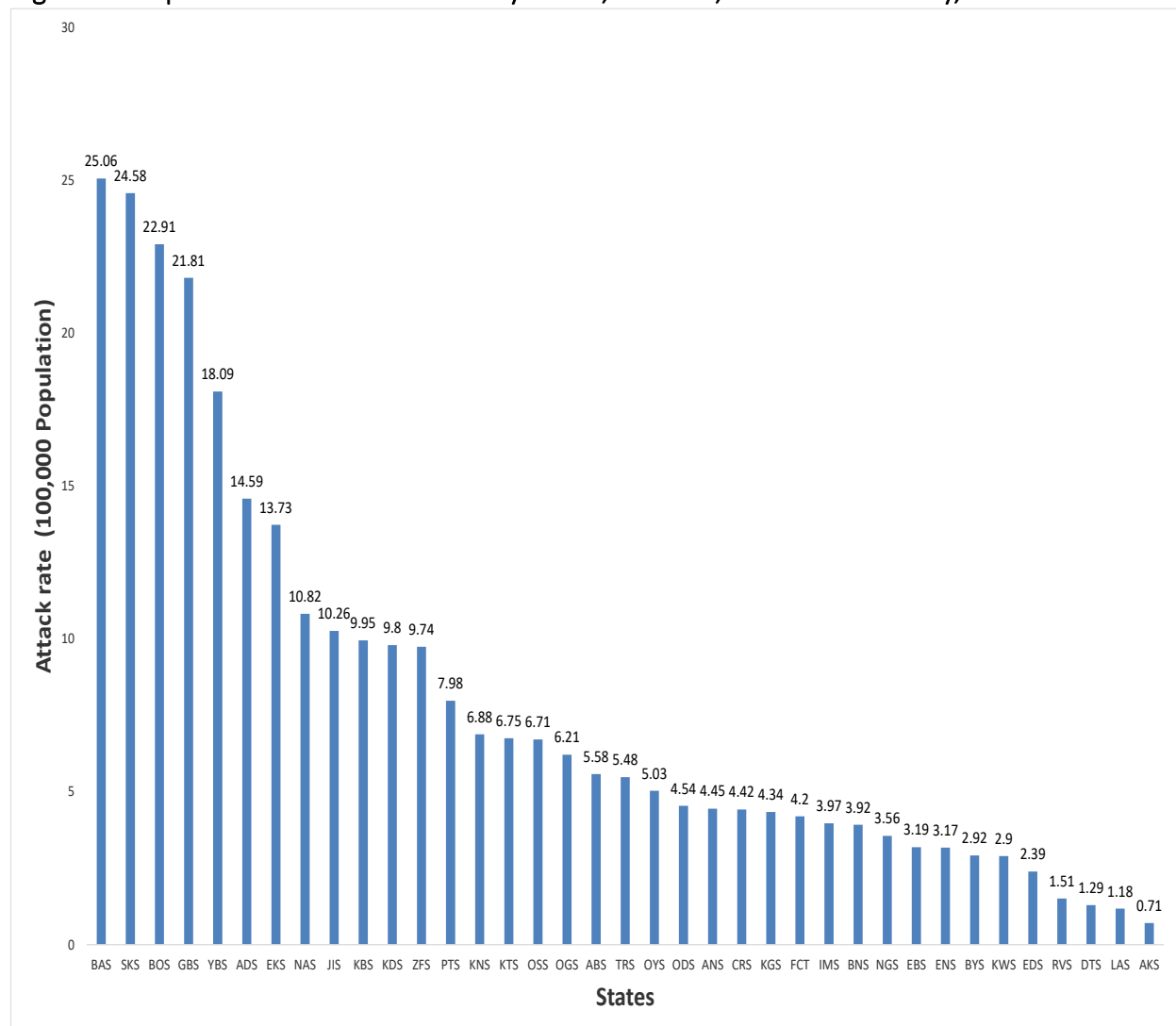
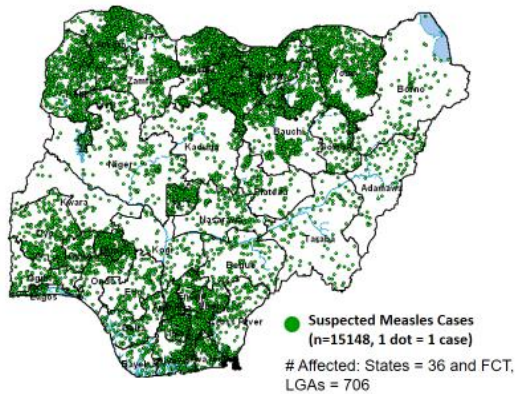


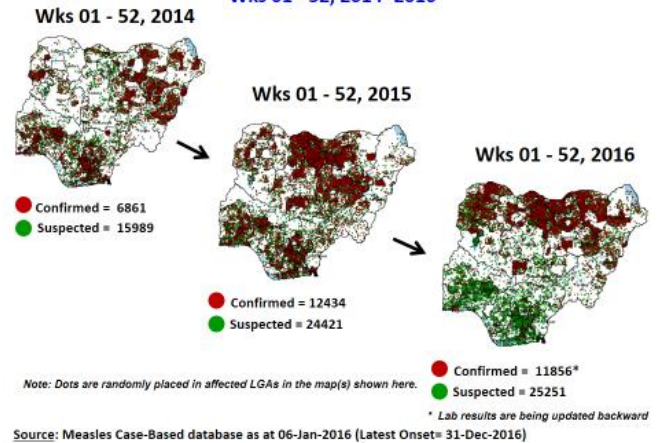
Figure 4: Map of Nigeria showing Distribution of suspected Measles cases, Weeks 1- 29, 2017as at 28/07/2017

Figure 5: Suspected & confirmed (Lab + Epi Link + Clinical) Measles cases weeks 1 – 52, 2014 - 2016

Distribution of Suspected Measles Cases, Wks01-29 2017



Suspected and Confirmed (Lab + Epi Link + Clinical) Measles Cases, Wks 01 - 52, 2014 -2016

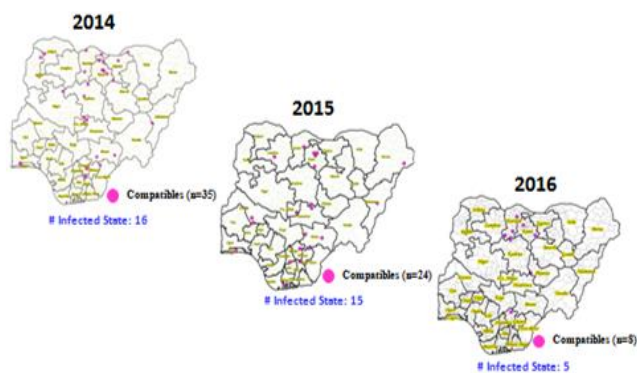


3. POLIOMYELITIS

- 3.1. As at July 16th 2017, no new case of WPV was recorded
- 3.2. Three new cVDPV2, environmental derived and Polio compatible cases identified
 - 3.2.1. In the reporting week, 393 cases of AFP were reported from 273 LGAs in 34 States and FCT
 - 3.2.2. AFP Surveillance has been enhanced and outbreak response is on-going in Borno and other high risk States
 - 3.2.3. The 1st round of SIPDs in 2017 was conducted from 28th – 31st January 2017 in the 18 high risk States. This was carried out using mOPV2 (2nd mOPV2 OBR). The schedule for other SIAs is as described in Table 2
 - 3.2.4. The 2nd and 3rd round of SIPDs completed (25th-28th February and 8th – 11th July, 2017) in 14 & 18 high risk States using bOPV respectively.
 - 3.2.5. The 1st and 2nd rounds of NIPDs completed (from 25th – 28th March, 2017 and 22nd – 25th April, 2017) nationwide respectively.
 - 3.2.6. Between weeks 1 and 52 in 2016, four WPVs were isolated from Borno State compared to no WPV isolated during the same period in 2015.
- 3.3. No circulating Vaccine Derived Polio Virus type 2 (cVDPV2) was isolated in week 1 - 52, in both 2016 and 2015.
- 3.4. Between weeks 1 and 52, 2016 two (2) cVDPV2 were isolated in two LGAs (two States) while one (1) cVDPV2 was isolated from Kwali, FCT during the same period in 2015.
- 3.5. Six confirmed WPVs were isolated in 2014.
- 3.6. The SIAs were strengthened with the following events:
 - 3.6.1. Immunization for all vaccine-preventable diseases in some selected wards/LGAs.
 - 3.6.2. Use of health camp facilities.
 - 3.6.3. Field supportive supervision and monitoring.
 - 3.6.4. Improved Enhanced Independent Monitoring (EIM) and Lots Quality Assessments (LQAs) in all Polio high risk States.
 - 3.6.5. High level of accountability framework

Figure 6: Polio Compatible cases in Nigeria as at Week 1 - 52, 2014 - 2016 (Data as at 16/07/17)

Table 2: 2017 SIAs



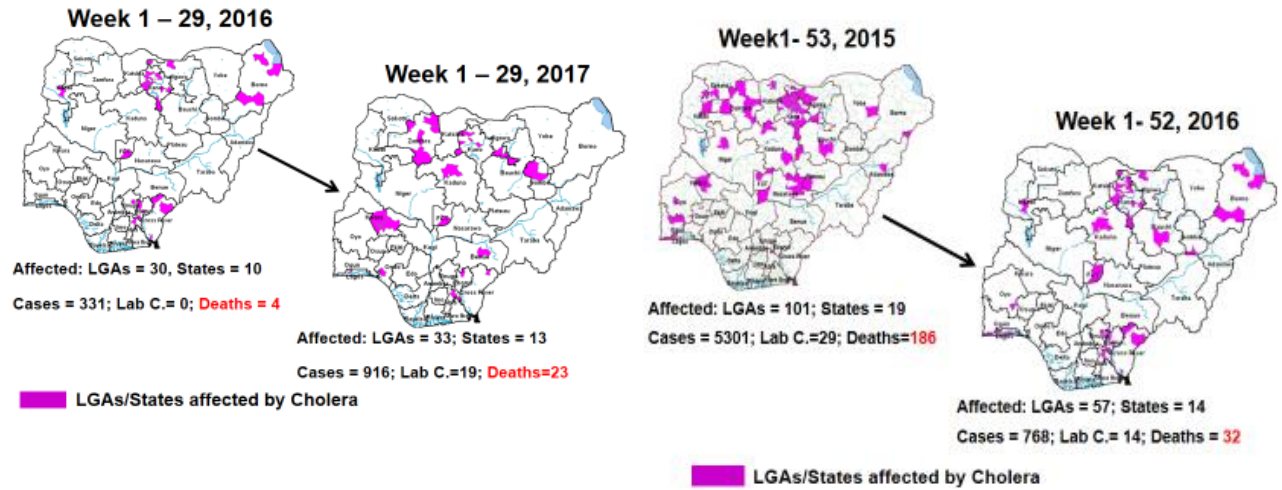
S/N	Month	Dates	Scope	Remarks	Target Populations	Antigen
1	January	28 th - 31 st	SIPDs (18 States)	2nd mOPV2 OBR in 18 states	33,478,035	mOPV2
2	February	25 th - 28 th	SIPDs (14 High Risk States)	List of high risk states reviewed using the HR Algorithm and local information on risk	26,256,251	bOPV
3	March	25 th - 28 th	NIPDs (36+1)	Nationwide	59,961,520	bOPV
4	April	22 nd - 25 th	NIPDs (36+1)	Nationwide	59,961,520	bOPV
5	July	8 th - 11 th	SIPDs (18 High Risk States)	High Risk States	33,478,035	bOPV
6	October	14 th - 17 th	SIPDs (18 High Risk States)	High Risk States	33,478,035	bOPV
7	December	9 th - 12 th	SIPDs (6 High Risk States)	High Risk States		bOPV

4. CHOLERA

- 4.1. 81 suspected cases of Cholera cases with three laboratory confirmed and three deaths (CFR, 3.70%) were reported from eight LGAs (five States) in week 29 compared with seven suspected cases from Bichi LGA (Kano State) at the same period in 2016.
- 4.2. Between weeks 1 and 29 (2017), 916 suspected Cholera cases with 19 laboratory confirmed and 23 deaths (CFR, 2.51%) from 33 LGAs (13 States) were reported compared with 331 suspected cases and four deaths (CFR, 1.21%) from 30 LGAs (ten States) during the same period in 2016 (Figure 7).
- 4.3. Between weeks 1 and 52 (2016), 768 suspected Cholera cases with 14 laboratory confirmed cases and 32 deaths (CFR, 4.17%) from 57 LGAs (14 States) were reported compared with 5,301 cases with 29 laboratory confirmed cases and 186 deaths (CFR, 3.51%) from 101 LGAs (18 States and FCT) during the same period in 2015 (Figure 8).
- 4.4. Cholera preparedness workshop held from 31st May – 1st June, 2017 in Abuja to develop Cholera preparedness plan as the season set in.
- 4.5. NCDC/partners provided onsite support in Kwara State.
- 4.6. NCDC/partners are providing onsite support in Zamfara State.
- 4.7. States are enjoined to intensify surveillance, implement WASH activities and ensure early reporting.

Figure 7: Status of LGAs/States that reported Cholera cases in week 1- 29, 2016 & 2017

Figure 8: Status of LGAs/States that reported Cholera cases in week 1- 52, 2015 & 2016

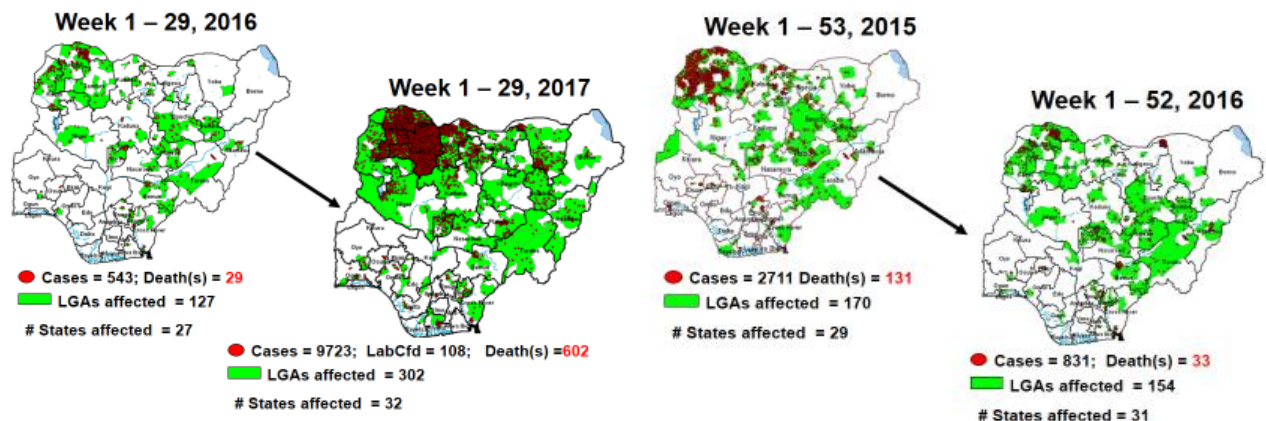


5. CEREBROSPINAL MENINGITIS (CSM)

- 5.1. In the reporting week 29, 12 suspected Cerebrospinal Meningitis (CSM) cases were reported from ten LGAs (ten States) compared with 13 suspected cases from nine LGAs (eight States) at the same period in 2016.
- 5.2. Between weeks 1 and 29 (2017), 9723 suspected CSM cases with 108 laboratory confirmed cases and 602 deaths (CFR, 6.19%) were recorded from 302 LGAs (32 States) compared with 543 suspected cases and 29 deaths (CFR, 5.34%) from 127 LGAs (27 States) during the same period in 2016 (Figure 9).
- 5.3. Between weeks 1 and 52, 2016, 831 suspected CSM cases with 43 laboratory confirmed cases and 33 deaths (CFR, 3.97%) were recorded from 154 LGAs (30 States and FCT) compared with 2,711 suspected cases and 131 deaths (CFR, 4.83%) from 170 LGAs (28 States and FCT) during the same period in 2015 (Figure 10)

Figure 9: Map of Nigeria showing areas affected by CSM, Week 1 - 29, 2016 & 2017

Figure 10: Nigeria: Dot maps of CSM cases, week 1 - 53, 2015 & 2016



- 5.4. Timeliness/completeness of CSM case-reporting from States to the National Level (2017 versus 2016): on average, 80.6% of the 26 endemic States sent CSM reports in a timely manner while 98.4% were complete in week 1 – 29, 2017 as against 84.1% timeliness and 99.2% completeness recorded within the same period in 2016
- 5.5. CSM preparedness checklist sent to 36 States and FCT ahead of 2017 meningitis season
- 5.6. Confirmed cases treated at identified treatment centres in affected States (Zamfara, Sokoto, Katsina, Kebbi, Niger, Kano, Yobe and Jigawa) and necessary supportive management also instituted
- 5.7. CSM National Emergency Operations Centre constituted at the Nigeria Centre for Disease Control
- 5.8. Onsite support provided to Zamfara, Sokoto, Katsina, Kebbi, Kano, Yobe and Niger States by NCDC and partners
- 5.9. Off-site support provided to other States
- 5.10. Intensive Surveillance in high risk States.
- 5.11. Reactive vaccination completed in Zamfara State for people aged one to 29 years using polysaccharide meningococcal A & C vaccine.
- 5.12. Reactive vaccination completed in two wards (Gada and Kaffe) in Gada LGA in Sokoto State using polysaccharide meningococcal A & C vaccine for people aged two to 29 years.
- 5.13. Reactive vaccination completed in nine LGAs in Sokoto State using monosaccharide meningococcal conjugate C vaccine for aged one to 20 years.
- 5.14. Reactive vaccination campaign completed in Yobe State for people aged two to 29 years using polyvalent ACW conjugate vaccine.
- 5.15. Medical teams were trained and deployed to support case management in Sokoto and Zamfara States completed (from Friday 5th - 26th May, 2017).
- 5.16. Deployed mobile testing laboratory to Zamfara State to aid diagnosis
- 5.17. A Team was deployed by NCDC/WHO to support surveillance activities, laboratory data harmonization and monitoring of the implementation plan in Yobe state
- 5.18. National CSM EOC has been stepped down
- 5.19. Evaluation of the CSM outbreak response in Zamfara and Sokoto States is ongoing by NCDC and WHO
- 5.20. National CSM After-Action Review meeting conducted in Sokoto State from the 24th – 25th of July 2017.

6. GUINEA WORM DISEASE

- 6.1. In the reporting week, no rumour report of Guinea Worm disease was received from any State.
- 6.2. Nigeria has celebrated eight consecutive years of zero reporting of Guinea worm disease in the country. The Country has been officially certified free of Dracunculiasis transmission by the International Commission for the Certification of Dracunculiasis Eradication (ICCDE).

(For further information, contact NIGEP NC/Director: Mrs. I, Anagbogu: +2348034085607, ifechuba@yahoo.co.uk)

FOR MORE INFORMATION CONTACT

Surveillance Unit:

Nigeria Centre for Disease Control
801 Ebitu Ukiwe Street, Jabi, Abuja, Nigeria.

epidreport@ncdc.gov.ng

www.ncdc.gov.ng/reports

0800-970000-10

Table 3: Status of Reporting by the State Epidemiologists, Nigeria, Weeks 1 - 29, 2017, as at 28th July, 2017

Keys:																														<table border="1"> <tr> <td rowspan="3">Timely Reports</td> <td><5%</td> <td>Poor</td> <td>2 States</td> </tr> <tr> <td>50-79%</td> <td>Good</td> <td>12 States</td> </tr> <tr> <td>80-100%</td> <td>Excellent</td> <td>23 States</td> </tr> </table>			Timely Reports	<5%	Poor	2 States	50-79%	Good	12 States	80-100%	Excellent	23 States																									
Timely Reports	<5%	Poor	2 States																																																																
	50-79%	Good	12 States																																																																
	80-100%	Excellent	23 States																																																																
T= Arrived on Time																																																																			
L= Arrived late		N Report not received																																																																	
N= No Report (Report not received)																																																																			
State	GeoZones	W01	W02	W03	W04	W05	W06	W07	W08	W09	W10	W11	W12	W13	W14	W15	W16	W17	W18	W19	W20	W21	W22	W23	W24	W25	W26	W27	W28	W29	Expected (Es)	Timely Rpts (Ts)	Late Rpts (Ls)	Rpts Not Recvd (Ns)	% Timely	% Complete																															
1	Abia	SEZ	L	L	L	L	L	T	L	T	L	T	T	L	L	L	T	T	T	T	T	T	T	T	T	T	L	T	T	T	29	18	11	0	62%	100%																															
2	Adamawa	NEZ	L	L	L	L	L	T	L	T	T	T	T	T	L	L	L	T	L	L	L	T	T	T	T	T	T	T	T	T	29	16	13	0	55%	100%																															
3	Akwa Ibom	SSZ	T	T	T	T	T	T	T	T	T	L	L	L	T	T	T	T	T	T	T	T	T	T	L	L	L	L	T	29	19	10	0	66%	100%																																
4	Anambra	SEZ	T	T	T	L	T	T	T	T	T	L	L	L	T	T	T	T	T	T	T	T	L	T	T	T	T	T	T	29	25	4	0	86%	100%																																
5	Bauchi	NEZ	T	T	T	T	T	T	L	T	T	T	T	T	T	T	T	T	T	T	T	T	T	T	T	T	T	L	T	29	27	2	0	93%	100%																																
6	Bayelsa	SSZ	T	T	T	T	T	T	T	T	T	T	T	T	T	T	T	T	T	T	T	T	T	T	T	T	T	T	T	29	29	0	0	100%	100%																																
7	Benue	NCZ	T	T	T	T	T	L	T	T	T	T	T	L	L	L	L	L	T	T	T	L	T	L	T	T	T	T	T	29	23	6	0	79%	100%																																
8	Borno	NEZ	L	L	T	T	T	L	L	L	T	T	T	T	L	L	L	L	T	T	T	T	T	T	T	L	L	L	T	29	22	7	0	76%	100%																																
9	Cross River	SSZ	L	L	L	L	L	L	L	L	L	T	T	T	T	T	L	L	L	L	L	L	L	L	L	L	L	L	T	29	15	14	0	52%	100%																																
10	Delta	SSZ	L	L	L	L	L	L	L	L	L	L	T	T	T	T	T	T	T	T	T	T	T	T	T	T	T	T	T	29	20	9	0	69%	100%																																
11	Ebonyi	SEZ	T	L	L	L	T	L	T	T	L	T	T	T	T	L	L	L	L	L	T	T	T	T	T	T	T	T	L	29	21	8	0	72%	100%																																
12	Edo	SSZ	L	L	L	L	T	L	T	T	T	T	L	L	L	L	L	L	L	L	L	L	L	L	L	L	L	L	T	N	29	13	15	1	45%	97%																															
13	Ekiti	SWZ	T	T	T	T	T	T	T	T	T	L	T	T	T	T	T	T	T	T	T	T	T	T	T	T	T	T	T	29	28	1	0	97%	100%																																
14	Enugu	SEZ	L	L	L	L	T	L	T	L	T	T	L	L	L	L	L	L	L	L	T	T	L	L	L	L	L	L	T	29	19	10	0	66%	100%																																
15	FCT	NCZ	T	T	T	T	T	T	T	T	T	T	T	T	T	T	T	T	T	T	T	T	T	T	T	T	T	T	T	29	29	0	0	100%	100%																																
16	Gombe	NEZ	T	T	T	T	T	T	T	T	T	T	T	T	T	T	L	T	T	T	T	T	T	T	T	L	T	N	N	29	25	2	2	86%	93%																																
17	Imo	SEZ	L	L	L	L	L	L	L	L	L	T	T	T	T	T	T	T	T	T	T	T	T	T	T	T	T	T	T	29	20	9	0	69%	100%																																
18	Igawa	NWZ	T	T	T	L	L	L	L	L	T	T	T	T	T	T	T	T	T	T	L	L	L	L	L	L	L	L	T	29	17	12	0	59%	100%																																
19	Kaduna	NWZ	T	T	T	L	T	L	T	T	L	T	T	T	T	T	T	T	T	T	T	T	T	T	L	L	L	L	T	29	24	5	0	83%	100%																																
20	Kano	NWZ	T	T	T	T	T	T	T	T	T	T	T	T	T	T	T	T	T	T	T	T	T	T	T	T	T	T	T	29	29	0	0	100%	100%																																
21	Katsina	NWZ	T	T	T	T	T	T	T	T	T	T	T	T	T	T	T	T	L	T	T	L	L	L	L	L	L	L	T	29	26	3	0	90%	100%																																
22	Kebbi	NWZ	T	T	T	L	L	T	T	T	T	L	L	L	L	L	L	L	L	L	T	T	T	T	T	T	T	T	T	29	26	3	0	90%	100%																																
23	Kogi	NCZ	T	T	T	T	T	T	T	T	T	T	T	L	L	L	L	L	L	L	L	L	L	L	L	L	L	L	T	29	28	1	0	97%	100%																																
24	Kwara	NCZ	L	L	L	L	L	L	L	L	L	L	L	L	L	L	L	L	L	L	L	L	L	L	L	L	L	L	T	29	13	16	0	45%	100%																																
25	Lagos	SWZ	T	T	T	T	T	T	T	T	T	T	T	T	T	T	T	T	T	T	T	T	T	T	T	T	T	T	T	29	29	0	0	100%	100%																																
26	Nasarawa	NCZ	T	T	T	T	T	T	T	T	T	T	T	T	T	T	T	T	T	T	T	T	T	T	L	L	L	L	T	29	28	1	0	97%	100%																																
27	Niger	NCZ	T	T	T	T	T	T	L	T	T	T	T	T	T	T	T	T	T	T	T	T	T	L	L	L	L	L	T	29	24	5	0	83%	100%																																
28	Ogun	SWZ	T	T	T	T	T	T	T	T	T	T	T	T	T	T	T	T	T	T	T	T	T	T	T	T	T	T	T	29	29	0	0	100%	100%																																
29	Ondo	SWZ	T	T	T	T	T	T	T	T	T	L	L	L	L	L	L	L	L	L	L	L	L	L	L	L	L	L	T	29	25	4	0	86%	100%																																
30	Osun	SWZ	T	T	T	T	T	T	T	T	T	T	T	T	T	T	T	T	T	T	T	T	T	T	T	T	T	T	T	29	29	0	0	100%	100%																																
31	Oro	SWZ	T	T	L	T	T	T	L	T	T	L	L	L	L	L	L	L	L	L	L	L	L	L	L	L	L	L	T	29	23	6	0	79%	100%																																
32	Plateau	NCZ	T	T	T	T	T	T	T	T	T	T	T	T	T	T	T	T	T	T	T	T	T	T	T	T	T	T	T	29	29	0	0	100%	100%																																
33	Rivers	SSZ	T	T	T	T	T	T	T	T	T	T	T	T	T	T	T	T	T	T	T	T	T	T	T	T	T	T	T	29	29	0	0	100%	100%																																
34	Sokoto	NWZ	T	T	T	T	T	T	T	T	T	T	T	T	T	T	T	T	T	T	T	T	T	T	T	T	T	T	T	29	29	0	0	100%	100%																																
35	Taraba	NEZ	T	T	T	T	T	T	T	T	T	T	T	T	T	T	T	T	T	T	T	T	T	L	L	L	L	L	T	29	24	5	0	83%	100%																																
36	Yobe	NEZ	L	L	T	T	T	T	T	T	T	T	T	T	T	T	T	T	T	T	T	T	T	T	T	T	T	T	T	29	28	1	0	97%	100%																																
37	Zamfara	NWZ	T	T	T	L	T	L	L	T	T	T	T	T	T	T	T	T	T	T	T	T	T	T	T	T	T	T	T	29	26	3	0	90%	100%																																
Total number of reports expected (E)		37																												37	37	37	37	37	37	37	37	37	37	37	37	37	37	37	37	37	37	37	37	37	37	37	37	37	37	37	37	37	37	37	37	1073					
Total reports sent on time (T)		28																												27	27	26	27	27	26	28	28	36	31	32	31	31	32	33	29	35	34	34	30	34	31	34	28	27	31	36	31		884								
Total reports sent late (L)		9																												10	10	11	10	10	11	9	9	1	6	5	6	6	5	4	8	2	3	3	7	3	6	3	9	10	6	0	4		186								
Total number of reports not received (N)		0																												0	0	0	0	0	0	0	0	0	0	0	0	0	0	0	0	0	0	0	0	0	0	0	0	0	1	2			3								
Timeliness of reports =100%T/E		75.7																												73.0	73.0	70.3	73.0	73.0	70.3	75.7	75.7	97.3	83.8	86.5	83.8	83.8	86.5	89.2	78.4	94.6	91.9	91.9	81.1	91.9	83.8	91.9	75.7	73.0	83.8	97.3	83.8				82%						
Completeness of reporting=100%(E-N)/E		100.0																												100.0	100.0	100.0	100.0	100.0	100.0	100.0	100.0	100.0	100.0	100.0	100.0	100.0	100.0	100.0	100.0	100.0	100.0	100.0	100.0	100.0	100.0	100.0	100.0	100.0	100.0	100.0	100.0	97.3	94.6				100%				
Latest Week		29																																																																Last updated 23rd July, 2017	

Table 4: Updates on Epidemics, Week 1- 29 (17th – 23rd July, 2017) as at 28th July, 2017)

SNO	Date	Sub-report	AFP		CSM		Cholera		Measles		Lassa Fever		Guineanorm Disease		HPAI		Other Diseases/Events		Remarks
			Cases		Cases		Cases		Cases		Cases		Cases		Cases		Cases		
			New	Combined Data Wk1-3	New	Combined Data Wk1-3	New	Combined Data Wk1-3	New	Combined Data Wk1-3	New	Combined Data Wk1-3	New	Combined Data Wk1-3	New	Combined Data Wk1-3	New	Combined Data Wk1-3	
1	Feb	3893102	7	6	1	2	1	2	0	272	6	2	333					2	
2	Adama	416535	1	24	5				9	631								11	1
3	Khwabon	547834	3						1	40								3	
4	Aranta	532718	7	7					13	23									
5	Bandi	6533157	10	13	4	3077			24	163	13	5	133						
6	Basse	2287943	3	11					1	88								7	
7	Bone	570331	14	23					2	224								1	
8	Bon	579337	10	21	2	453			10	174	9	169					8		
9	Casavier	394499	8	38	3	729			1	113							7	1	
10	Dalo	515179	6	12					1	73									
11	Diop	284478	6	16					9	94	4	444						4	
12	Fao	40232	3	2	1	500			103	1								1	
13	Fao	335345	12	26					94	49									
14	Frop	497335	10	8	1	153			7	143	3						1		
15	FCT	349332	9	49	2	742			1	67	2						2		
16	Gombe	325332	10	53	2	400			8	769	6	207					17	1	
17	Guo	539170	5	26					7	27								1	
18	Guo	539170	1	40	2	120			4	81	3								
19	Guo	612332	14	81	2	494			16	323	44	14	116					13	
20	Guo	1288340	28	293	24	215	9		17	93	8	107					23	2	
21	Guo	178470	7	34	1	507	20	8	1022	8	3	1	139				4		
22	Guo	434307	28	111	19	1037				4	67	1	1000				1		
23	Guo	448302	6	1						167							3	1	
24	Guo	318545	3	58					7	93									
25	Guo	1288340	7	15	2	133	10	1	2	1339	5								
26	Guo	239436	8	21					4	279							28	6	
27	Guo	531832	9	114	33	2839			6	203	4	197							
28	Guo	531832	13	15	2	133			8	37							19	1	
29	Guo	482449	13	18					7	216	1						27	18	
30	Guo	481308	8	7	1	143			21	35									
31	Guo	231631	13	3	22				9	46									
32	Guo	448116	14	50	2	100			8	90	20	2	159	5			26	9	
33	Guo	744151	19	28					5	113							6	1	
34	Guo	488483	8	397	181	472			93	158	10	179							
35	Guo	3105151	7	22					4	11	1						38	12	
36	Guo	327433	4	38	1	200	11	26	1130	7							1		
37	Guo	448175	15	389	19	22	197	54	2	449	17	6	154						
Total		8093449	37486	922	100	60	618	81	3	194	19	21	134	28			344	81	58

Please note that the reporting status in this table is from Wk3 State office

Source: Neglected Disease Unit, FAO

Status: Report 1, Entry 1, Label Hello Report