

Weekly Epidemiological Report

Week 51: 15th – 21st December 2025

Highlight of the week

STRENGTHENING ONE HEALTH CAPACITY IN BORNO AND GOMBE STATES



The Nigeria Centre for Disease Control and Prevention (NCDC), in collaboration with the Federal Ministry of Livestock Development (FMLD), Federal Ministry of Environment (FMENV), the UK Health Security Agency, the World Health Organization (WHO), the Core Group Polio Project (CGPP), and ASDI, concluded a three-day Subnational Joint Risk Assessment (JRA) Operationalization Training for stakeholders from Borno and Gombe States.

Held at Corinthia Villa, Abuja, the training convened participants from the State Ministries of Health, Agriculture, and Environment, with a focus on building capacity to apply the Tripartite JRA tool for the identification and management of zoonotic diseases and other shared health threats.

The workshop strengthened cross-sector collaboration at the subnational level and advanced Nigeria's One Health approach, supporting improved preparedness, early detection, and effective response to public health risks.

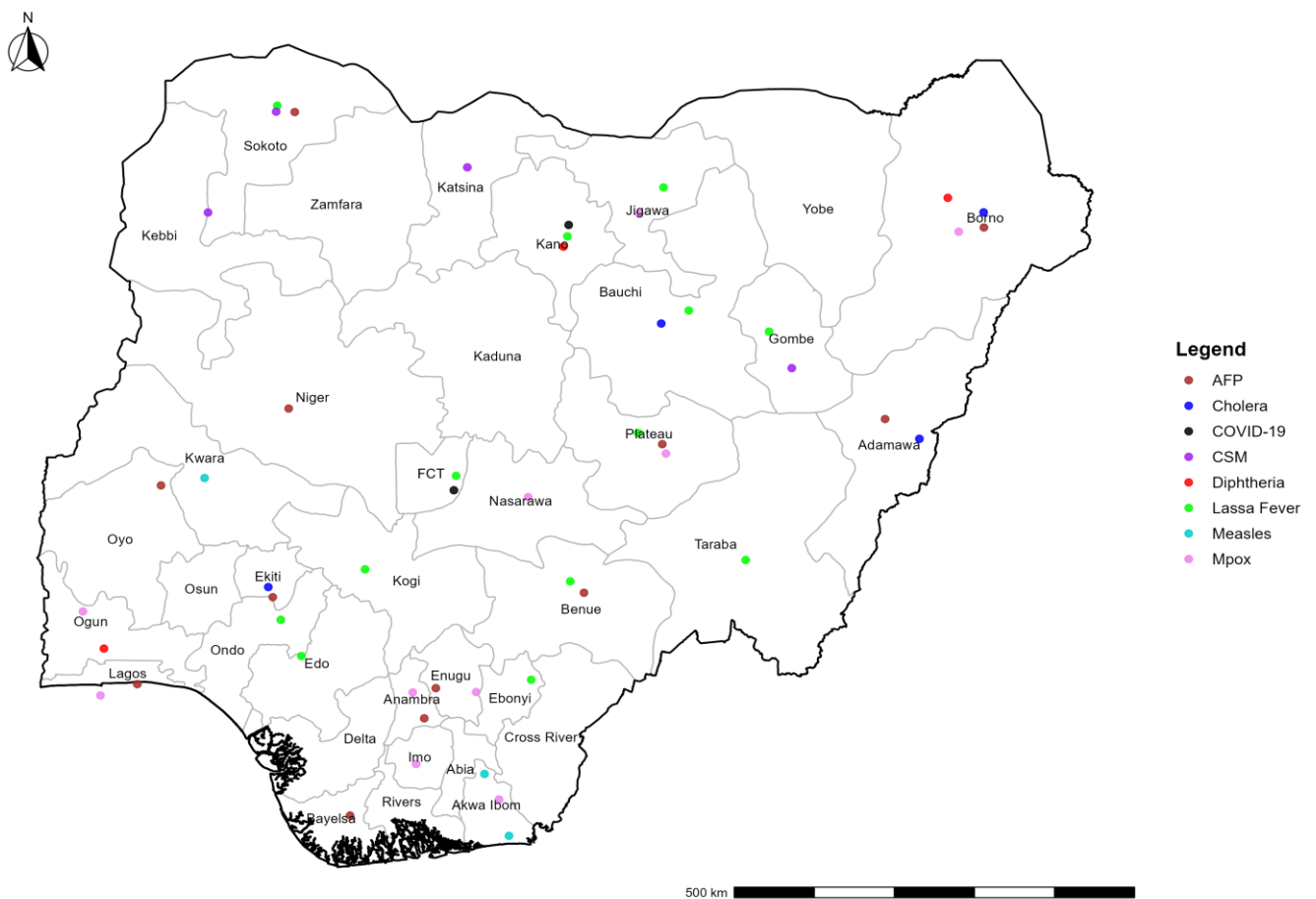
Summary of Incidents

Ongoing Incidents
3

The Ongoing incidents within the reporting week are Cholera, Mpox and Diphtheria.

**Ongoing incidents are defined as confirmed cases where a national EOC or equivalent has been activated.*

Figure 1: Priority Diseases under surveillance in Nigeria, Week 51, 2025



Summary of Diseases

Table 1: Week 51, 15th – 21st December 2025

Lassa Fever₁	Cerebrospinal Meningitis (CSM)₂	Yellow Fever₂
117 Suspected case(s)	26 Suspected case(s)	0 Suspected case(s)
23 Confirmed case(s)	0 Confirmed case(s)	0 Confirmed case(s)
0 Death(s)	4 Death(s)	0 Death(s)
Cholera₂	Measles₂	Mpox₂
11 Suspected case(s)	6 Suspected case(s)	34 Suspected case(s)
2 Confirmed case(s)	0 Confirmed case(s)	4 Confirmed case(s)
0 Death(s)	0 Death(s)	0 Death(s)
Acute Flaccid Paralysis (AFP)₂	COVID-19₂	Diphtheria₂
18 Suspected case(s)	9 Suspected case(s)	283 Suspected case(s)
0 Confirmed case(s)	1 Confirmed case(s)	281 Confirmed case(s)
0 Death(s)	0 Death(s)	4 Death(s)
National Sentinel influenza surveillance₃		
0 Suspected case(s)		
0 Confirmed case(s)		

Information for all the diseases was retrieved from the Technical Working Group and Situation Reports of the Nigerian Centre for Disease Control and Prevention.

1. Case Fatality Rate (CFR) for this disease is reported for confirmed cases only.
2. CFR for this disease is reported for total cases i.e., suspected + confirmed.
3. Information for sentinel influenza was retrieved from the laboratory.
4. The data published in 2024 WER may vary with the data of 2024 in 2025 WER due to data harmonisation and updates

Lassa Fever

Table 2: Week 51

Suspected cases	Confirmed cases	Deaths	Number of States and LGAs affected
117	23	0	State: 13 + FCT LGA: 41

Table 3: Lassa Fever Year to date (Week 1 – 51, 2024/2025)

Year	Suspected cases	Confirmed cases	Deaths	CFR (%)
2024	9872	1239	203	16.4%
2025	9288	1121	178	15.9%

Figure 2: Trend of suspected and confirmed cases of Lassa Fever by epidemiological, Week 51, 2025

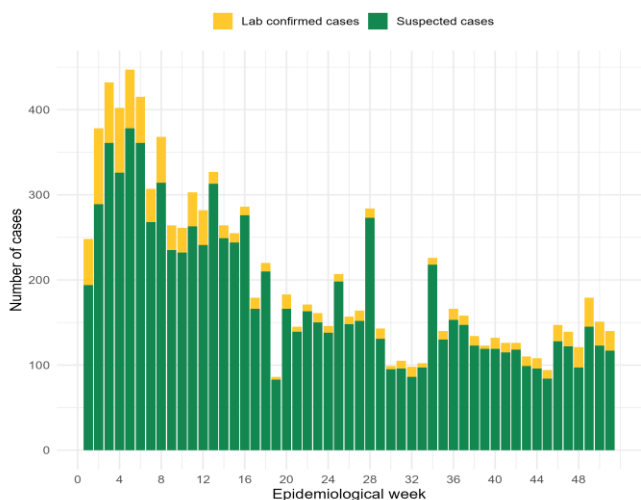
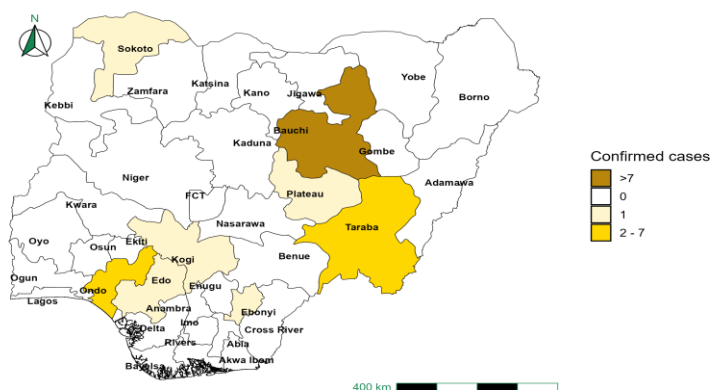


Figure 3: Confirmed cases of Lassa Fever by State, Nigeria, Week 51, 2025



Key Point

- There were 117 suspected cases of Lassa Fever reported from 41 LGAs in 13 states and FCT.
- There were 23 laboratory confirmed cases and no death was recorded.

Actions

- National Lassa fever multi-partner, multi-sectoral Technical Working Group (TWG) continues to coordinate the preparedness and response activities at all levels.
- Conducted a Lassa Fever dynamic risk assessment in preparation for the new outbreak season
- Supported the COPE Phase I Final Review and COPE Phase II Planning.
- Lassa Fever Vaccine Development and Deployment Needs Assessment Validation Meeting.

Cerebrospinal Meningitis (CSM)

Table 4: Week 51

Suspected cases	Confirmed cases	Deaths	Number of States and LGAs affected
26	0	4	State: 4 LGA: 4

Table 5: CSM Year to date (Week 1 – 51, 2024/2025)

Year	Suspected cases	Confirmed cases	Deaths	CFR (%)
2024	4957	48	352	7.1%
2025	4735	82	332	7%

Figure 4: Trend of suspected and confirmed cases of CSM by epidemiological, Week 51, 2025

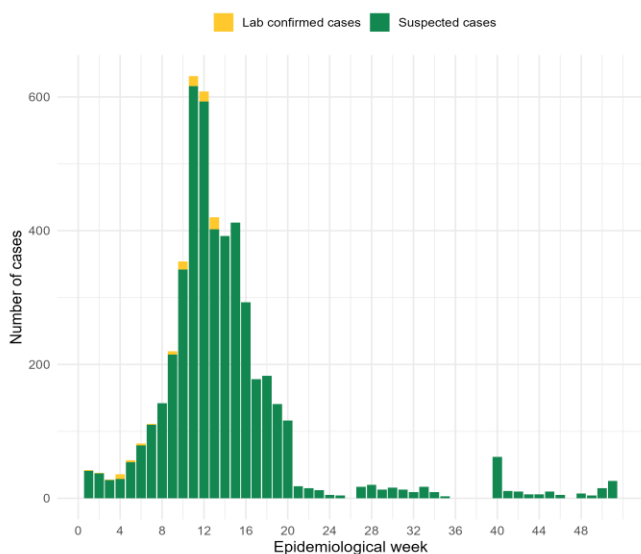


Figure 5: Suspected cases of CSM by State, Nigeria, Week 51, 2025



Key Point

- There were 26 suspected cases of Cerebrospinal Meningitis (CSM) reported from four LGAs in four states.
- There was no laboratory confirmed case and four deaths were recorded.

Actions

- National CSM multi-partner, multi-sectoral Technical Working Group (TWG) continues to coordinate the preparedness and response activities at all levels.
- Providing offsite/onsite support to states.

Yellow Fever

Table 6: Week 51

Suspected cases	Confirmed cases	Deaths	Number of States and LGAs affected
0	0	0	State: 0 LGA: 0

Table 7: Yellow Fever Year to date (Week 1 – 51, 2024/2025)

Year	Suspected cases	Confirmed cases	Deaths	CFR (%)
2024	2895	22	2	0.1%
2025	2319	8	6	0.3%

Figure 6: Trend of suspected and confirmed cases of Yellow Fever by epidemiological, Week 51, 2025

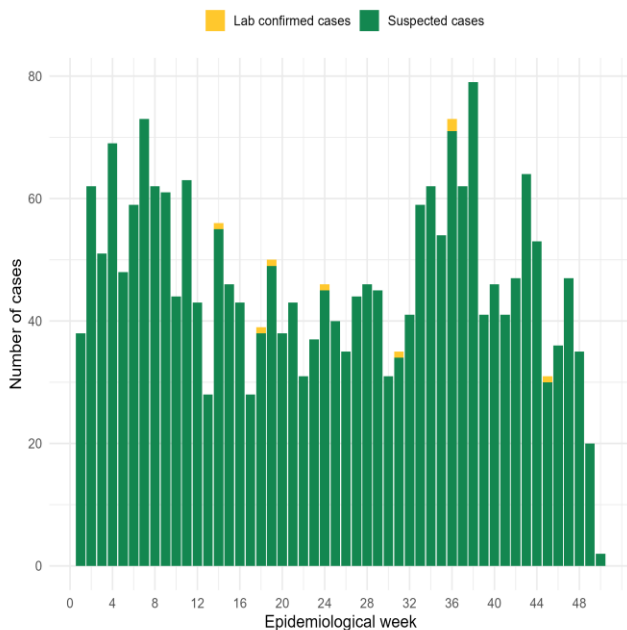
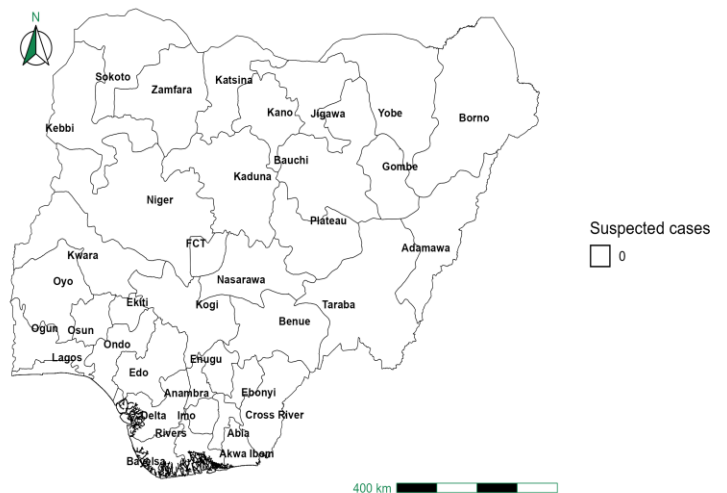


Figure 7: Suspected cases of Yellow Fever by State, Nigeria, Week 51, 2025



Key Point

- There was no case of Yellow Fever reported for this week.

Cholera

Table 8: Week 51

Suspected cases	Confirmed cases	Deaths	Number of States and LGAs affected
11	2	0	State: 4 LGA: 5

Table 9: Cholera Year to date (Week 1 – 51, 2024/2025)

Year	Suspected cases	Confirmed cases	Deaths	CFR (%)
2024	24790	409	731	2.9%
2025	21866	150	481	2.2%

Figure 8: Trend of suspected and confirmed cases of Cholera by epidemiological, Week 51, 2025

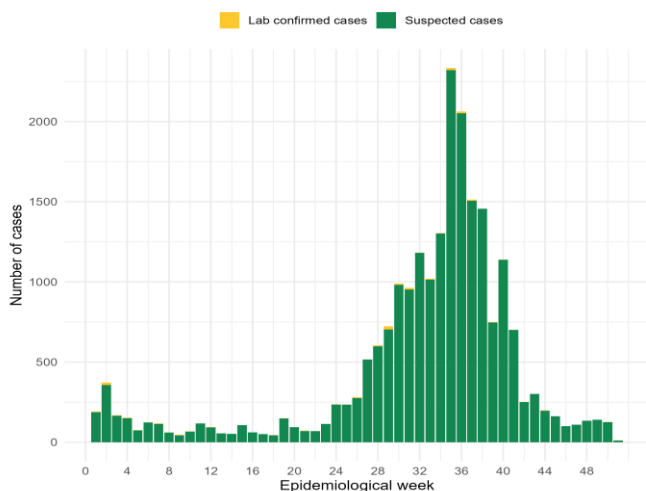
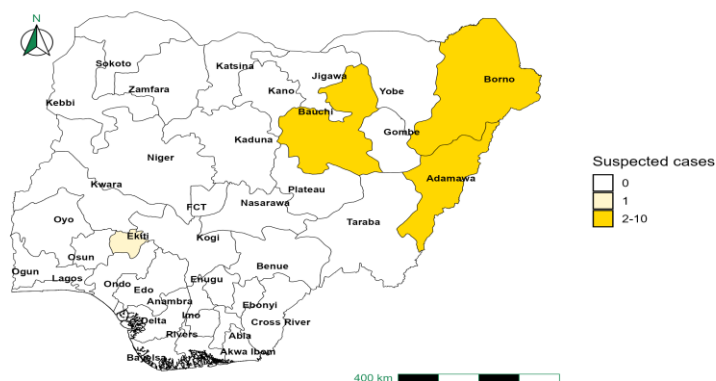


Figure 9: Trend of suspected and confirmed cases of Cholera, Week 51, 2025



Key Point

- There were 11 suspected cases of Cholera reported from five LGAs in four states.
- There were two laboratory confirmed case and no death was recorded.

Actions

- National Cholera multi-partner, multi-sectoral Technical Working Group (TWG) continues to coordinate the preparedness and response activities at all levels.
- Biweekly EOC Meetings.
- Providing offsite/onsite support to states.

Measles

Table 10: Week 51

Suspected cases	Confirmed cases	Deaths	Number of States and LGAs affected
6	0	0	State: 3 LGA: 5

Table 11: Measles Year to date (Week 1 – 51, 2024/2025)

Year	Suspected cases	Confirmed cases	Deaths	CFR (%)
2024	20045	9820	123	0.6%
2025	27429	19225	153	0.6%

Figure 10: Trend of suspected and confirmed cases of Measles by epidemiological, Week 51, 2025

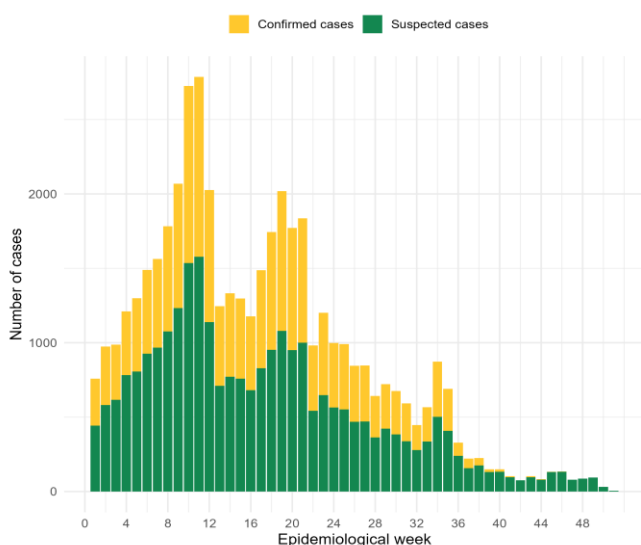
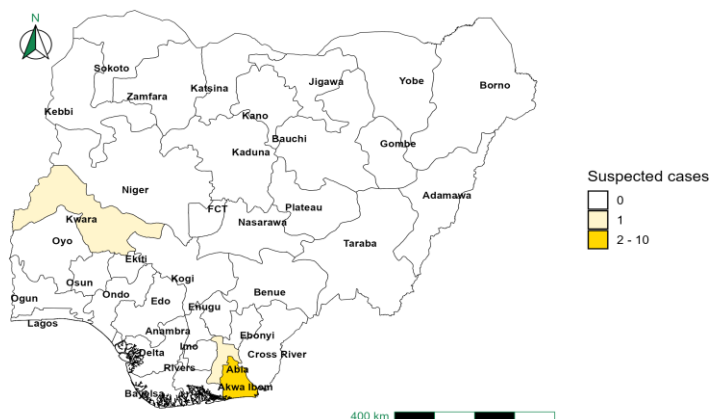


Figure 11: Suspected cases of Measles by State, Nigeria, Week 51, 2025



Key Point

- There were six suspected cases of Measles reported from five LGAs in three states.
- There was no confirmed case and no death was recorded.

Actions

- National Measles Technical Working Group (TWG) is monitoring activities in all states.
- Provision of off-site surveillance support to affected States.
- Harmonisation of surveillance and laboratory data from across states and laboratories.

Mpox

Table 12: Week 51

Suspected cases	Confirmed cases	Deaths	Number of States and LGAs affected
34	4	0	State: 3 LGA: 19

Table 13: Mpox Year to date (Week 1 – 51, 2024/2025)

Year	Suspected cases	Confirmed cases	Deaths	CFR (%)
2024	1911	186	0	0%
2025	1764	430	4	0.2%

Figure 12: Trend of suspected and confirmed cases of Mpox by epidemiological, Week 51, 2025

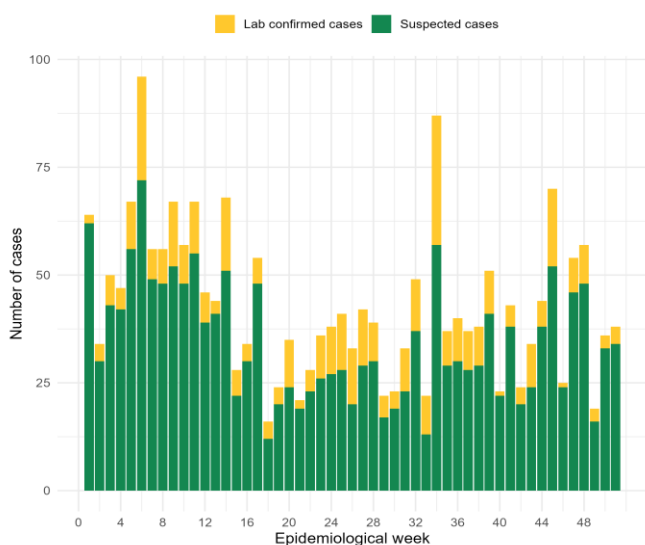
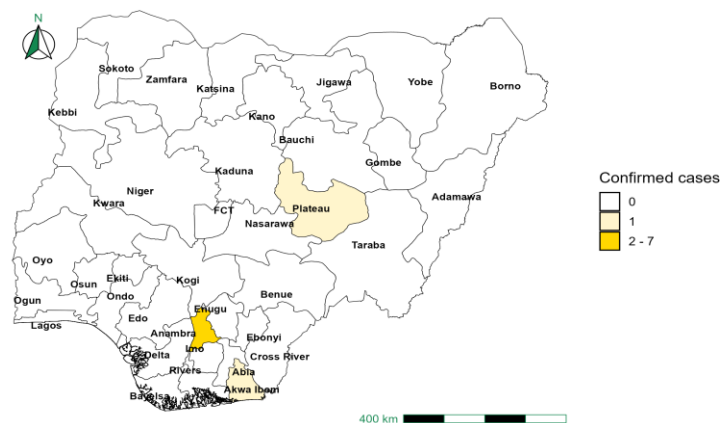


Figure 13: Suspected cases of Mpox by State, Nigeria, Week 51, 2025



Key Point

- There were 34 suspected cases of Mpox reported from 19 LGAs in three states.
- There were four laboratory confirmed cases and no death was recorded.

Actions

- National Monkeypox Technical Working Group (TWG) is monitoring activities in all states.
- Weekly EOC meetings.
- Provision of off-site surveillance support to affected States.
- Harmonisation of surveillance and laboratory data from across states and laboratories.

Acute Flaccid Paralysis (AFP)

Table 14: Week 51

Suspected cases	Confirmed cases	Deaths	Number of States and LGAs affected
18	0	0	State: 12 LGA: 13

Table 15: AFP Year to date (Week 1 – 51, 2024/2025)

Year	Suspected cases	Confirmed cases	Deaths	CFR (%)
2024	6928	25	28	0.4%
2025	8669	29	18	0.2%

Figure 14: Trend of suspected and confirmed cases of AFP by epidemiological, Week 51, 2025

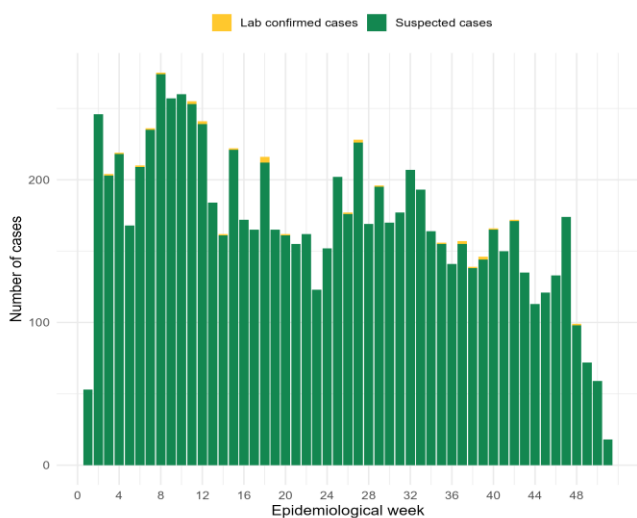
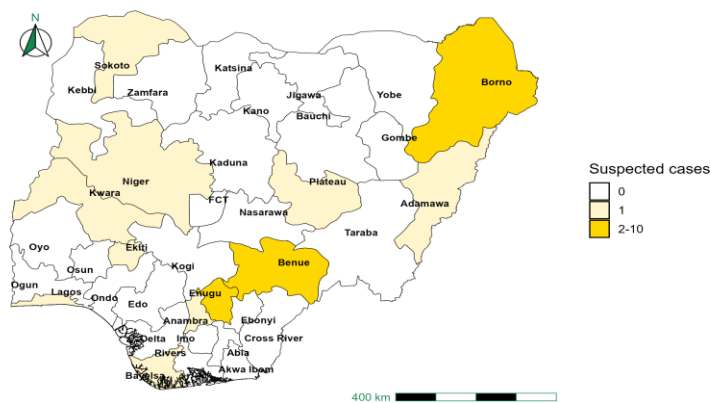


Figure 15: Suspected cases of AFP by State, Nigeria, Week 51, 2025



Key Point

- There were 18 suspected cases of AFP reported from 13 LGAs in 12 states.
- There was no laboratory confirmed case and no death was recorded.

Coronavirus Disease (COVID-19)

Table 16: Week 51

Suspected cases	Confirmed cases	Deaths	Number of States and LGAs affected
9	1	0	State: 1 + FCT LGA: 2

Table 17: COVID-19 Year to date (Week 1 – 51, 2024/2025)

Year	Suspected cases	Confirmed cases	Deaths	CFR (%)
2024	369930	750	1	0.1%
2025	3588	60	0	0%

Figure 16: Trend of suspected and confirmed cases of Covid 19 by epidemiological, Week 51, 2025

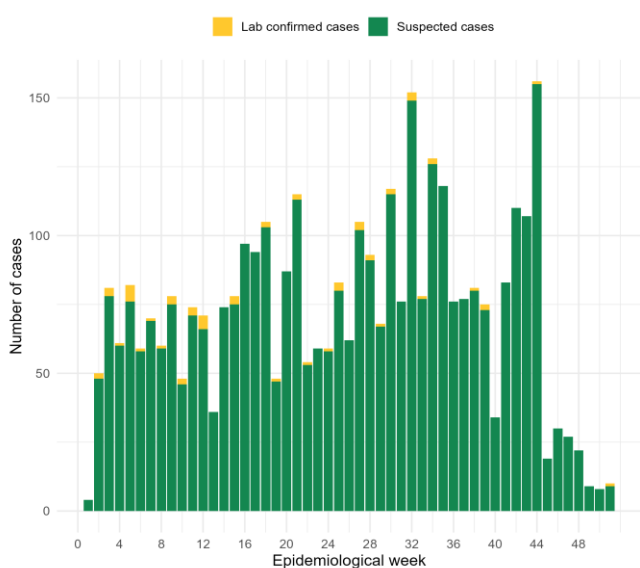


Figure 17: Suspected cases of Covid 19 by State, Nigeria, Week 51, 2025



Key Point

- There were two suspected cases of Covid-19 reported from two LGAs in Kano state and FCT.
- There was one laboratory confirmed case and no death was recorded.

Actions

- National COVID-19 Technical Working Group (TWG) is monitoring activities in all states
- Harmonisation of surveillance and laboratory data from across states and laboratories
- Provision of off-site surveillance support to affected States

Diphtheria

Table 18: Week 51

Suspected cases	Confirmed cases	Deaths	Number of States and LGAs affected
283	281	4	State: 3 LGA: 16

Table 19: Diphtheria Year to date (Week 1 – 51, 2024/2025)

Year	Suspected cases	Confirmed cases	Deaths	CFR (%)
2024	17148	10606	771	4.5%
2025	30972	23627	1938	6.3%

Figure 18: Trend of suspected and confirmed cases of Diphtheria by epidemiological, Week 51, 2025

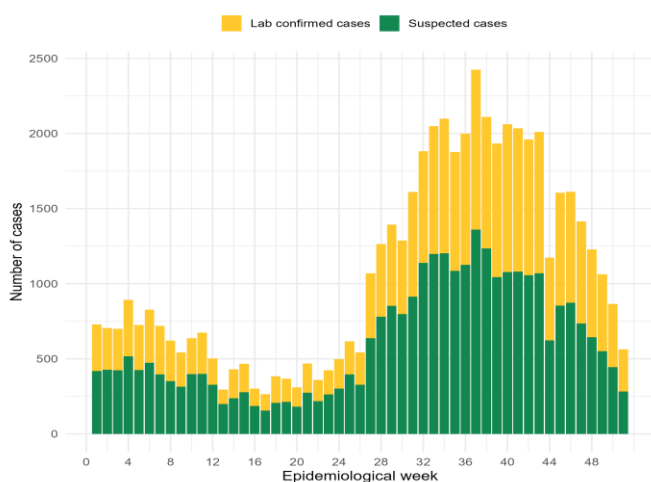
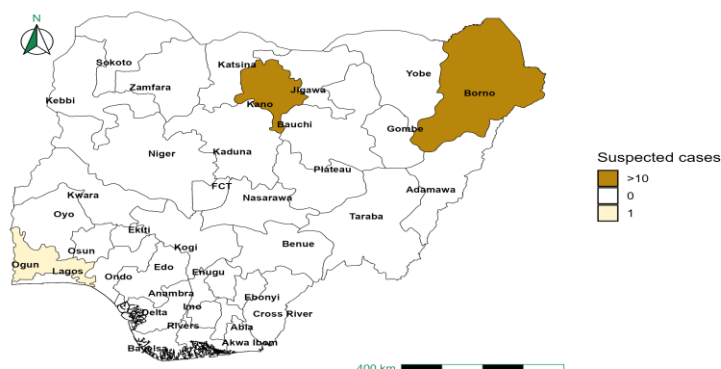


Figure 19: Suspected cases of Diphtheria by State, Nigeria, Week 51, 2025



Key Point

- There were 283 suspected cases of Diphtheria reported from 16 LGAs in three states.
- There were 281 confirmed cases and four deaths were recorded.

Actions

- National Diphtheria Technical Working Group (TWG) is monitoring activities in all states.
- Weekly EOC meeting.
- Provide technical and off-site support to states on case identification, reporting, and response, especially to non-reporting and low-burden states.

National Influenza Sentinel Surveillance

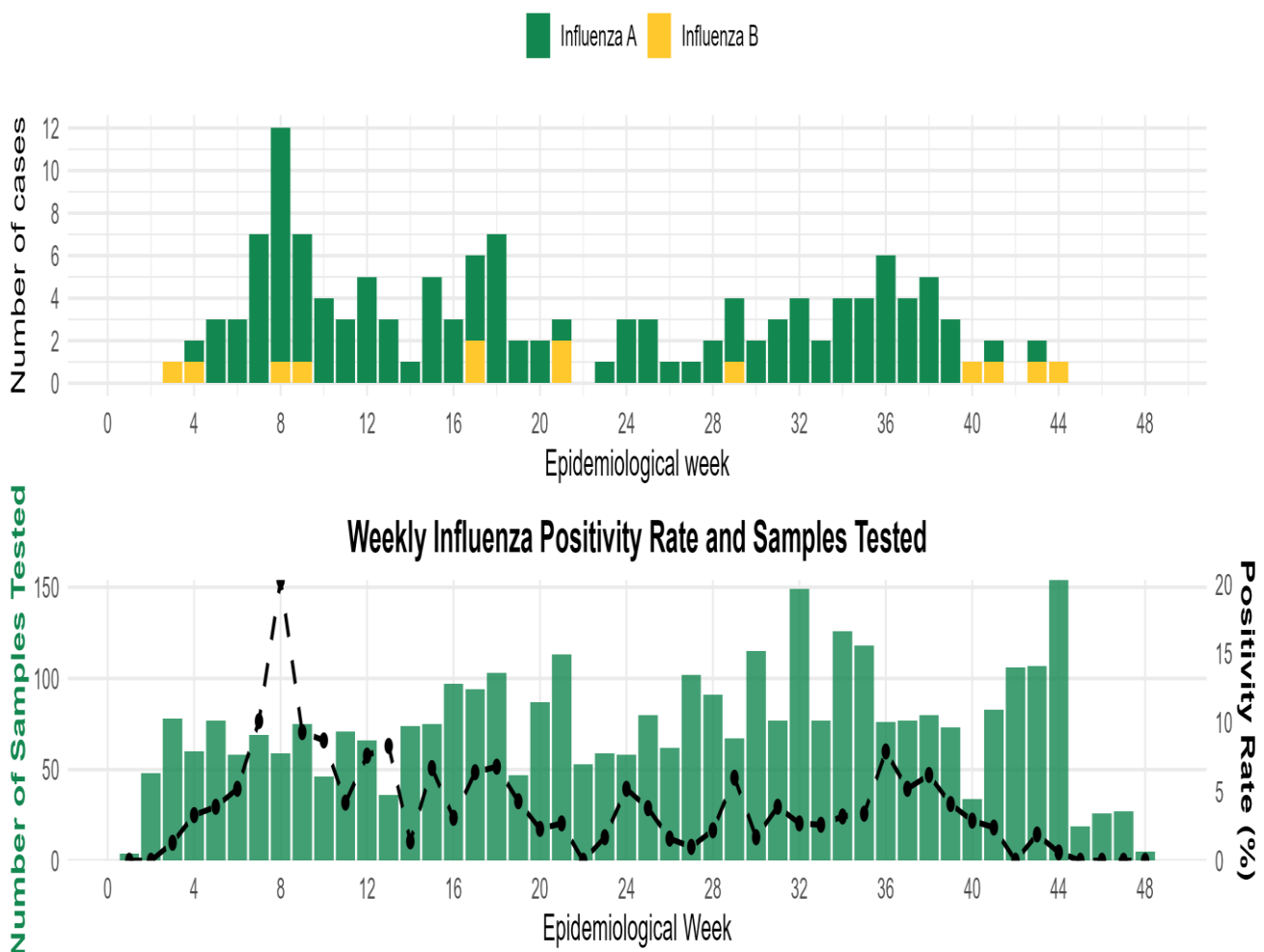
Table 20: Week 51

Suspected cases	Confirmed cases	Confirmed Case by type	
		Influenza A	Influenza B
0	0	0	0

Table 21: Year to date (Week 1 – 51, 2024/2025)

Suspected cases	Confirmed cases	Confirmed Case by type	
		Influenza A	Influenza B
3538	137	124	13

Figure 20: Number of influenza positive specimens by type and percentage positive by epidemiological week, 2025



Event-based Surveillance (EBS)

Week 51

Key Point

Epi Week 51

- 147 Calls were successfully routed to agents and answered.
- Over 2332 articles scanned through Epidemic Intelligence from Open Sources (EIOS) and other manual sources.
- From the calls, EIOS, and other manual sources, two signals were picked.

Cumulatively, 1 – 51

- 7,433 calls were successfully routed to agents and answered.
- 79 Signals picked and escalated.

Figure 21: Number of signals/events per week, 2025.

