

# Weekly Epidemiological Report

Week 50: 8<sup>th</sup> – 14<sup>th</sup> December, 2025

## Highlight of the week

### COMMUNITY-BASED ONE HEALTH PARTICIPATORY AND EMPOWERMENT (COPE) STRATEGY PROJECT



The Nigeria Centre for Disease Control and Prevention (NCDC) participated in the review meeting of the Community-based One Health Participatory and Empowerment (COPE) Strategy Project, implemented from 2023 to 2025, alongside partner institutions.

The meeting provided an opportunity to review progress achieved, acknowledge key milestones, assess implementation challenges, review outstanding actions, and strategically plan for the next phase of the project. Discussions also reaffirmed the collective commitment to strengthening One Health systems through community-led approaches.

The NCDC looks forward to continued collaboration, improved coordination, and enhanced impact as implementation progresses into the next phase of the COPE project.

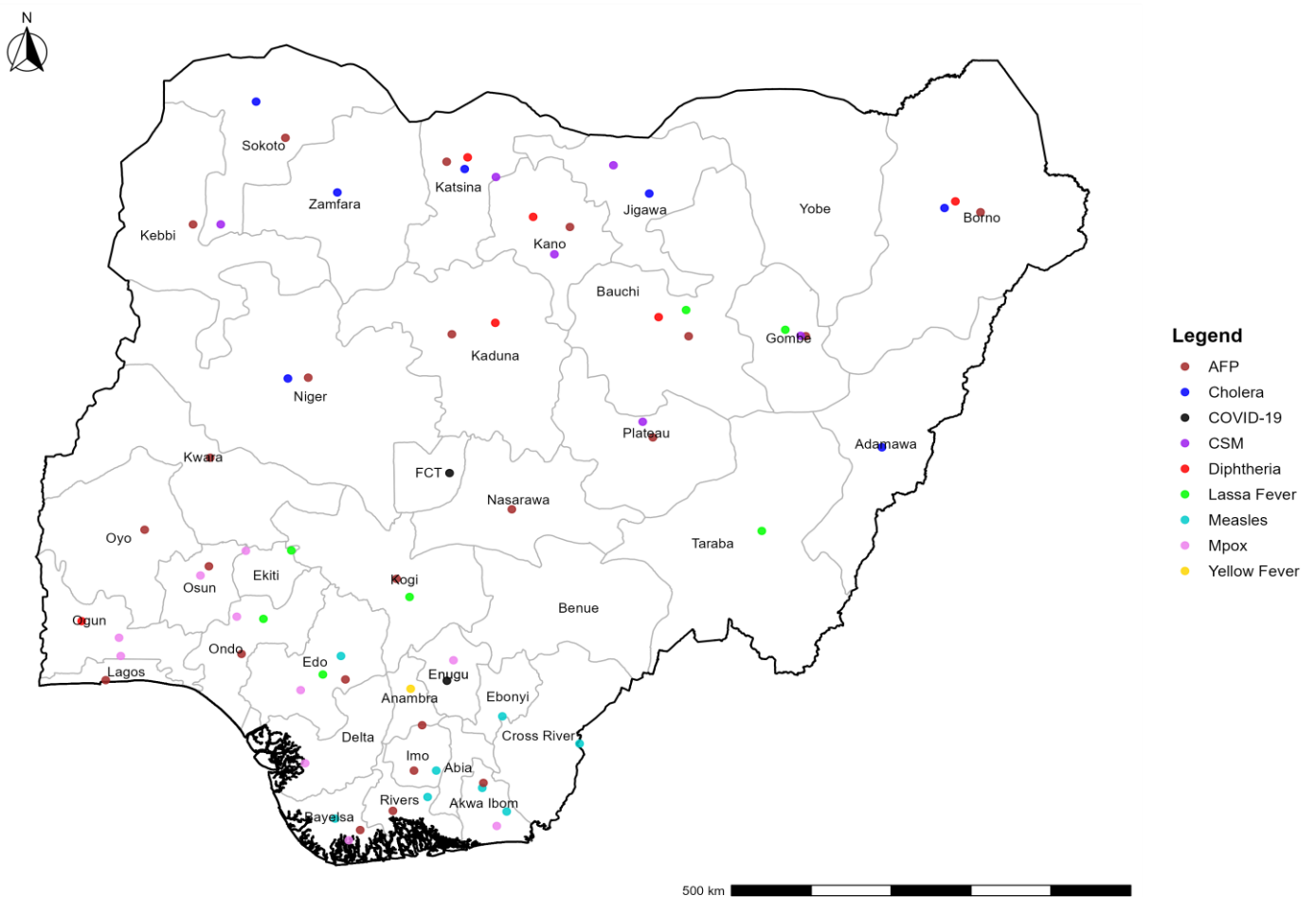
## Summary of Incidents

**Ongoing Incidents**  
**3**

The Ongoing incidents within the reporting week are Cholera, Mpox and Diphtheria.

*\*Ongoing incidents are defined as confirmed cases where a national EOC or equivalent has been activated.*

Figure 1: Priority Diseases under surveillance in Nigeria, Week 50, 2025



## Summary of Diseases

**Table 1: Week 50, 8<sup>th</sup> – 14<sup>th</sup> December 2025**

<b>Lassa Fever<sub>1</sub></b>	<b>Cerebrospinal Meningitis (CSM)<sub>2</sub></b>	<b>Yellow Fever<sub>2</sub></b>
123 Suspected case(s)	15 Suspected case(s)	2 Suspected case(s)
28 Confirmed case(s)	0 Confirmed case(s)	0 Confirmed case(s)
0 Death(s)	4 Death(s)	0 Death(s)
<b>Cholera<sub>2</sub></b>	<b>Measles<sub>2</sub></b>	<b>Mpox<sub>2</sub></b>
125 Suspected case(s)	31 Suspected case(s)	33 Suspected case(s)
1 Confirmed case(s)	0 Confirmed case(s)	3 Confirmed case(s)
0 Death(s)	0 Death(s)	0 Death(s)
<b>Acute Flaccid Paralysis (AFP)<sub>2</sub></b>	<b>COVID-19<sub>2</sub></b>	<b>Diphtheria<sub>2</sub></b>
59 Suspected case(s)	8 Suspected case(s)	444 Suspected case(s)
0 Confirmed case(s)	0 Confirmed case(s)	422 Confirmed case(s)
0 Death(s)	0 Death(s)	3 Death(s)
<b>National Sentinel influenza surveillance<sub>3</sub></b>		
0 Suspected case(s)		
0 Confirmed case(s)		

Information for all the diseases was retrieved from the Technical Working Group and Situation Reports of the Nigerian Centre for Disease Control and Prevention.

1. Case Fatality Rate (CFR) for this disease is reported for confirmed cases only.
2. CFR for this disease is reported for total cases i.e., suspected + confirmed.
3. Information for sentinel influenza was retrieved from the laboratory.
4. The data published in 2024 WER may vary with the data of 2024 in 2025 WER due to data harmonisation and updates

**Lassa Fever**

**Table 2: Week 50**

Suspected cases	Confirmed cases	Deaths	Number of States and LGAs affected
123	28	0	State: 7 LGA: 29

**Table 3: Lassa Fever Year to date (Week 1 – 50, 2024/2025)**

Year	Suspected cases	Confirmed cases	Deaths	CFR (%)
2024	9683	1187	192	16.2%
2025	9171	1098	178	16.2%

Figure 2: Trend of suspected and confirmed cases of Lassa Fever by epidemiological, Week 50, 2025

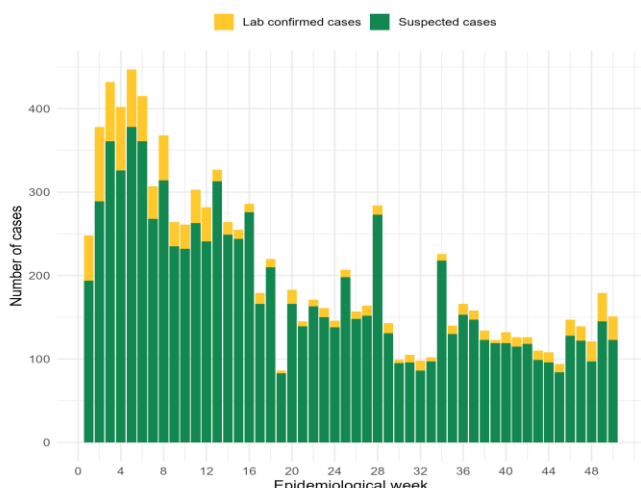
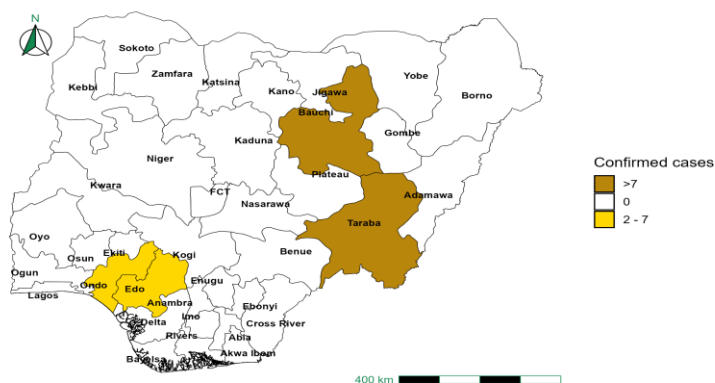


Figure 3: Confirmed cases of Lassa Fever by State, Nigeria, Week 50, 2025



**Key Point**

- There were 123 suspected cases of Lassa Fever reported from 29 LGAs in seven states.
- There were 28 laboratory confirmed cases and no death was recorded.

**Actions**

- National Lassa fever multi-partner, multi-sectoral Technical Working Group (TWG) continues to coordinate the preparedness and response activities at all levels.
- A capacity development session was held to introduce S.O.A.R analysis in strategic planning
- Shared Lassa Fever jingles across key national and subnational stakeholders and platforms

**Cerebrospinal Meningitis (CSM)**

**Table 4: Week 50**

Suspected cases	Confirmed cases	Deaths	Number of States and LGAs affected
15	0	4	State: 6 LGA: 7

**Table 5: CSM Year to date (Week 1 – 50, 2024/2025)**

Year	Suspected cases	Confirmed cases	Deaths	CFR (%)
2024	4937	48	352	7.1%
2025	4709	82	328	7%

Figure 4: Trend of suspected and confirmed cases of CSM by epidemiological, Week 50, 2025

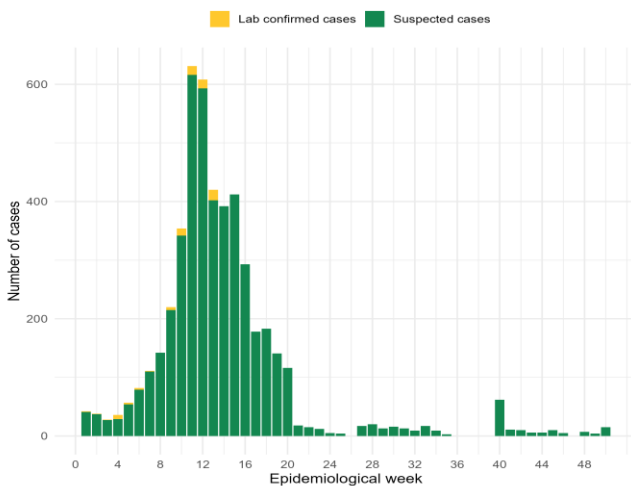
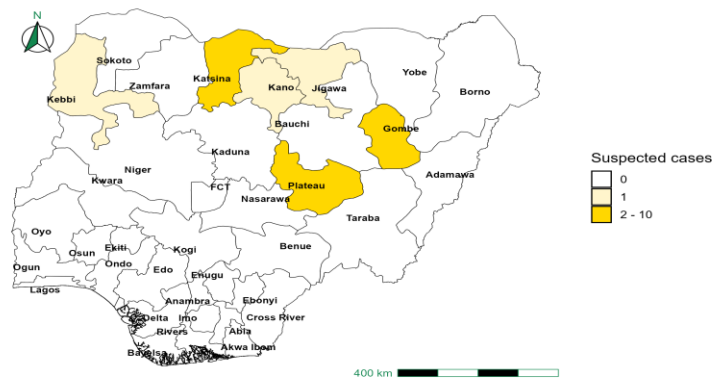


Figure 5: Suspected cases of CSM by State, Nigeria, Week 50, 2025



**Key Point**

- There were 15 suspected cases of Cerebrospinal Meningitis (CSM) reported from seven LGAs in six states.
- There was no laboratory confirmed case and four deaths were recorded.

**Actions**

- National CSM multi-partner, multi-sectoral Technical Working Group (TWG) continues to coordinate the preparedness and response activities at all levels.
- Providing offsite/onsite support to states.

**Yellow Fever**

**Table 6: Week 50**

Suspected cases	Confirmed cases	Deaths	Number of States and LGAs affected
2	0	0	State: 1 LGA: 1

**Table 7: Yellow Fever Year to date (Week 1 – 50, 2024/2025)**

Year	Suspected cases	Confirmed cases	Deaths	CFR (%)
2024	2892	22	2	0.1%
2025	2319	8	6	0.3%

Figure 6: Trend of suspected and confirmed cases of Yellow Fever by epidemiological, Week 50, 2025

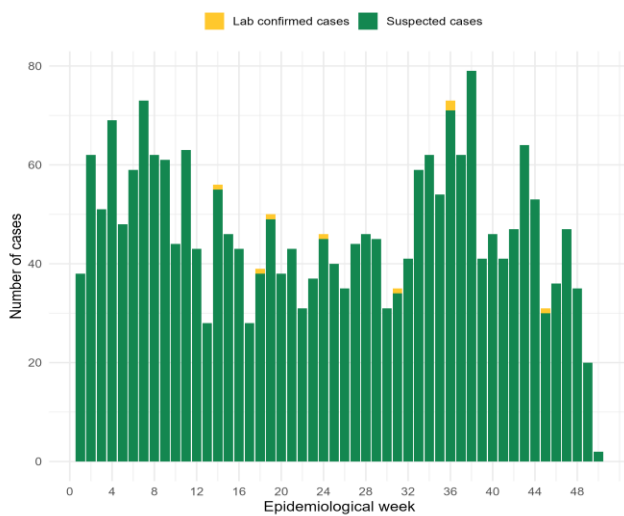
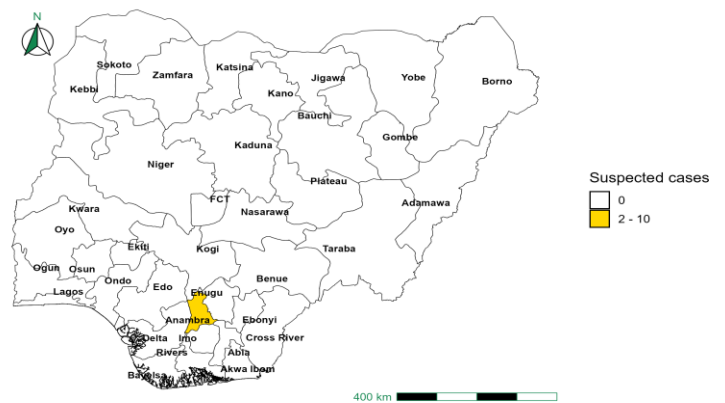


Figure 7: Suspected cases of Yellow Fever by State, Nigeria, Week 50, 2025



**Key Points**

- There were two suspected cases of Yellow Fever (YF) reported from one LGA in Anambra state.
- There was no laboratory confirmed case and no death was recorded.

**Actions**

- National YF multi-partner Technical Working Group (TWG) continues to coordinate activities across states.
- Coordination of YF sample management and transportation from all states to the regional reference laboratories
- Providing offsite/onsite support to states.

**Cholera**

**Table 8: Week 50**

Suspected cases	Confirmed cases	Deaths	Number of States and LGAs affected
125	1	0	State: 7 LGA: 8

**Table 9: Cholera Year to date (Week 1 – 50, 2024/2025)**

Year	Suspected cases	Confirmed cases	Deaths	CFR (%)
2024	24722	409	724	2.9%
2025	21855	148	481	2.2%

Figure 8: Trend of suspected and confirmed cases of Cholera by epidemiological, Week 50, 2025

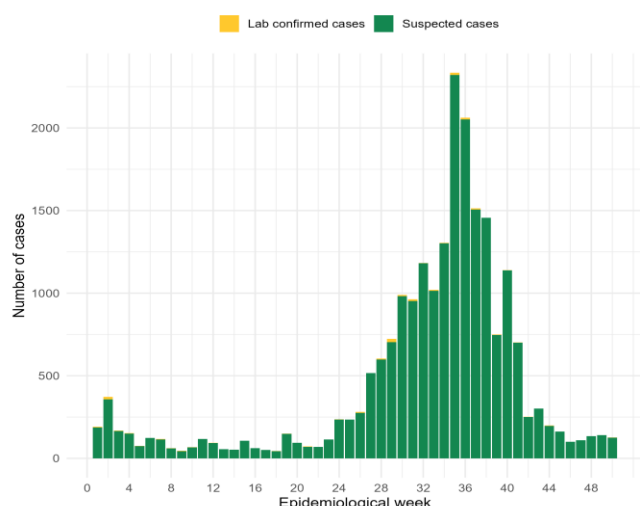
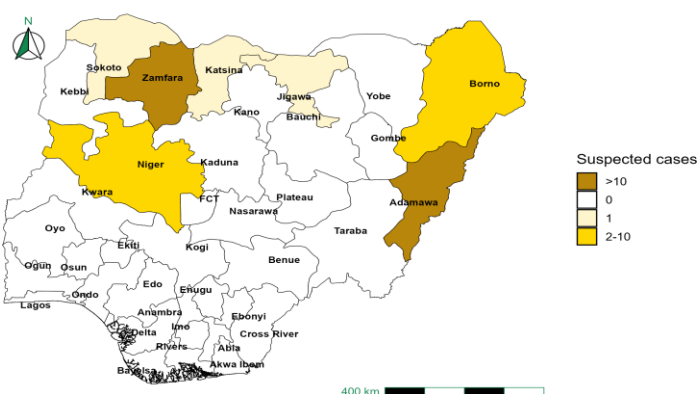


Figure 9: Trend of suspected and confirmed cases of Cholera, Week 50, 2025



**Key Point**

- There were 125 suspected cases of Cholera reported from eight LGAs in seven states.
- There was one laboratory confirmed case and no death was recorded.

**Actions**

- National Cholera multi-partner, multi-sectoral Technical Working Group (TWG) continues to coordinate the preparedness and response activities at all levels.
- Biweekly EOC Meetings.
- Providing offsite/onsite support to states.

**Measles**

**Table 10: Week 50**

Suspected cases	Confirmed cases	Deaths	Number of States and LGAs affected
31	0	0	State: 8 LGA: 20

**Table 11: Measles Year to date (Week 1 – 50, 2024/2025)**

Year	Suspected cases	Confirmed cases	Deaths	CFR (%)
2024	20016	9819	123	0.6%
2025	27423	19225	153	0.6%

Figure 10: Trend of suspected and confirmed cases of Measles by epidemiological, Week 50, 2025

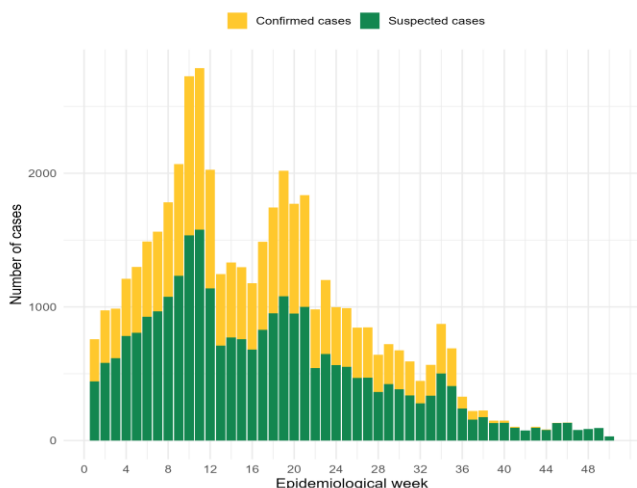
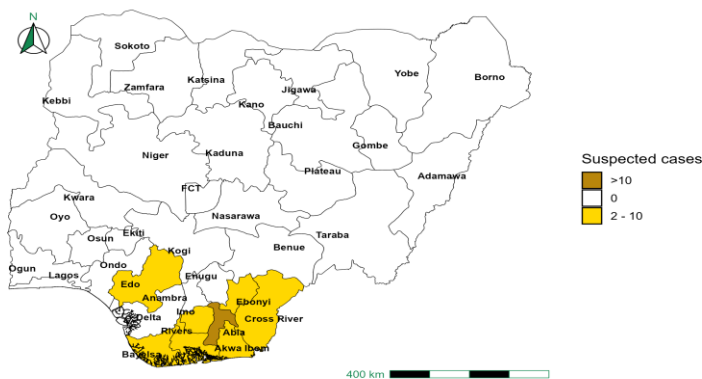


Figure 11: Suspected cases of Measles by State, Nigeria, Week 50, 2025



**Key Point**

- There were 31 suspected cases of Measles reported from 20 LGAs in eight states.
- There was no confirmed case and no death was recorded.

**Actions**

- National Measles Technical Working Group (TWG) is monitoring activities in all states.
- Provision of off-site surveillance support to affected States.
- Harmonisation of surveillance and laboratory data from across states and laboratories.

**Mpox**

**Table 12: Week 50**

Suspected cases	Confirmed cases	Deaths	Number of States and LGAs affected
33	3	0	State: 3 LGA: 18

**Table 13: Mpox Year to date (Week 1 – 50, 2024/2025)**

Year	Suspected cases	Confirmed cases	Deaths	CFR (%)
2024	1863	178	0	0%
2025	1730	426	4	0.2%

Figure 12: Trend of suspected and confirmed cases of Mpox by epidemiological, Week 50, 2025

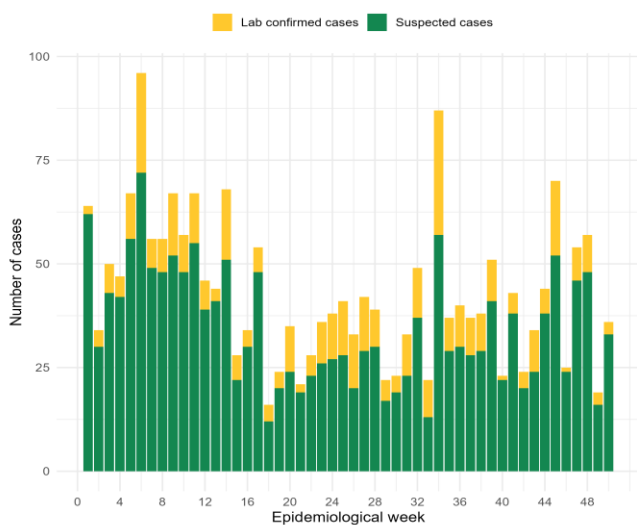


Figure 13: Suspected cases of Mpox by State, Nigeria, Week 50, 2025



**Key Point**

- There were 33 suspected cases of Mpox reported from 18 LGAs in three states.
- There were three laboratory confirmed cases and no death was recorded.

**Actions**

- National Monkeypox Technical Working Group (TWG) is monitoring activities in all states.
- Weekly EOC meetings.
- Provision of off-site surveillance support to affected States.
- Harmonisation of surveillance and laboratory data from across states and laboratories.

**Acute Flaccid Paralysis (AFP)**

**Table 14: Week 50**

Suspected cases	Confirmed cases	Deaths	Number of States and LGAs affected
59	0	0	State: 23 LGA: 38

**Table 15: AFP Year to date (Week 1 – 50, 2024/2025)**

Year	Suspected cases	Confirmed cases	Deaths	CFR (%)
2024	6924	25	28	0.4%
2025	8651	29	18	0.2%

Figure 14: Trend of suspected and confirmed cases of AFP by epidemiological, Week 50, 2025

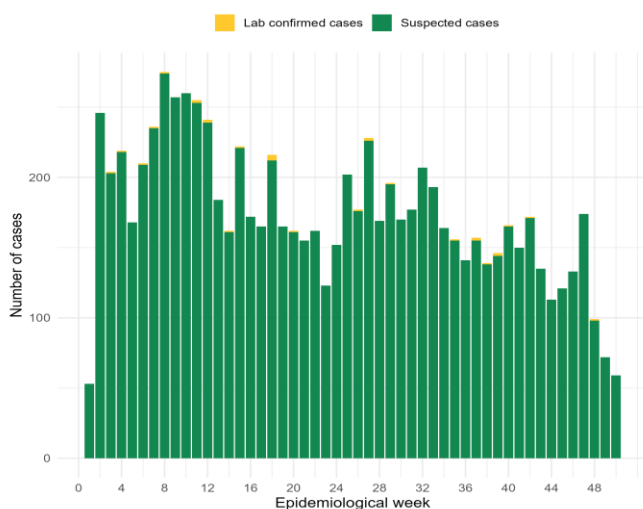
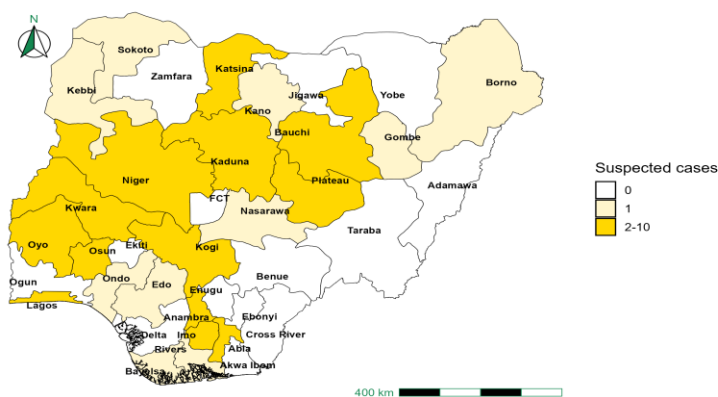


Figure 15: Suspected cases of AFP by State, Nigeria, Week 50, 2025



**Key Point**

- There were 59 suspected cases of AFP reported from 38 LGAs in 23 states.
- There was no laboratory confirmed case and no death was recorded.

**Coronavirus Disease (COVID-19)**

**Table 16: Week 50**

Suspected cases	Confirmed cases	Deaths	Number of States and LGAs affected
8	0	0	State: 1 + FCT LGA: 2

**Table 17: COVID-19 Year to date (Week 1 – 50, 2024/2025)**

Year	Suspected cases	Confirmed cases	Deaths	CFR (%)
2024	369923	750	1	0.1%
2025	3579	59	0	0%

Figure 16: Trend of suspected and confirmed cases of Covid 19 by epidemiological, Week 50, 2025

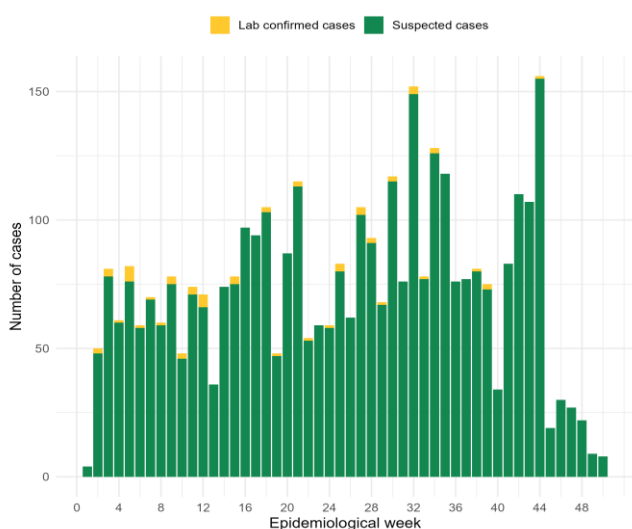
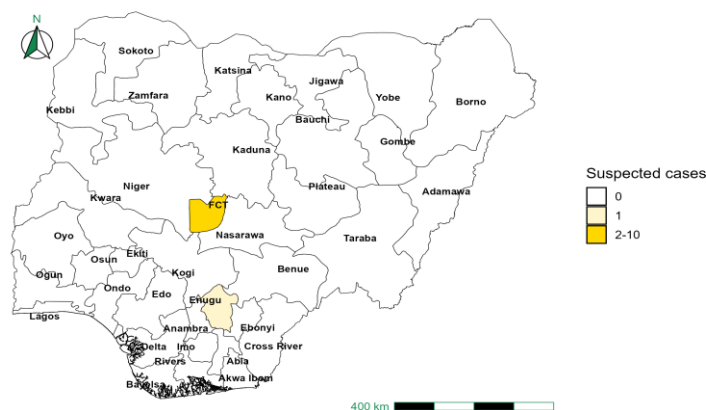


Figure 17: Suspected cases of Covid 19 by State, Nigeria, Week 50, 2025



**Key Point**

- There were eight suspected cases of Covid-9 reported from two LGAs in Enugu state and FCT.
- There was no laboratory confirmed case and no death was recorded.

**Actions**

- National COVID-19 Technical Working Group (TWG) is monitoring activities in all states
- Harmonisation of surveillance and laboratory data from across states and laboratories
- Provision of off-site surveillance support to affected States

## Diphtheria

**Table 18: Week 50**

Suspected cases	Confirmed cases	Deaths	Number of States and LGAs affected
444	422	3	State: 6 LGA: 28

**Table 19: Diphtheria Year to date (Week 1 – 50, 2024/2025)**

Year	Suspected cases	Confirmed cases	Deaths	CFR (%)
2024	17112	10570	770	4.5%
2025	30689	23346	1934	6.3%

Figure 18: Trend of suspected and confirmed cases of Diphtheria by epidemiological, Week 50, 2025

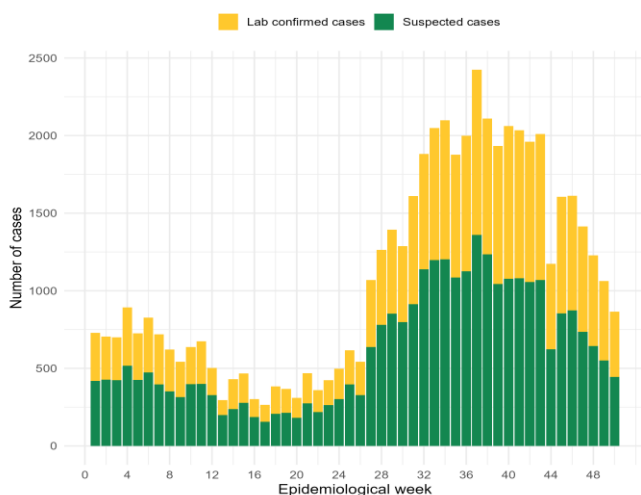
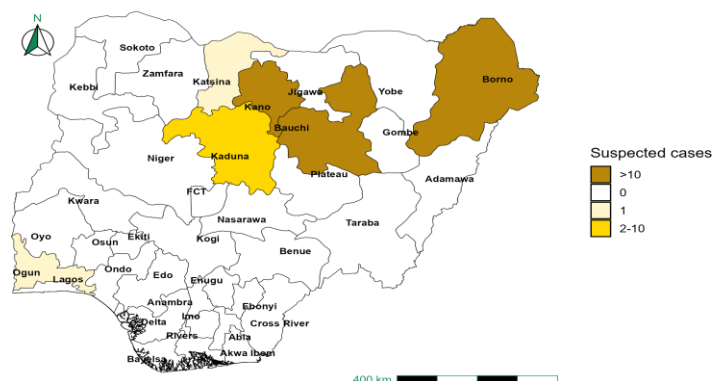


Figure 19: Suspected cases of Diphtheria by State, Nigeria, Week 50, 2025



### Key Point

- There were 444 suspected cases of Diphtheria reported from 28 LGAs in six states.
- There were 422 confirmed cases and three deaths were recorded.

### Actions

- National Diphtheria Technical Working Group (TWG) is monitoring activities in all states.
- Weekly EOC meeting.
- Provide technical and off-site support to states on case identification, reporting, and response, especially to non-reporting and low-burden states.

**National Influenza Sentinel Surveillance**

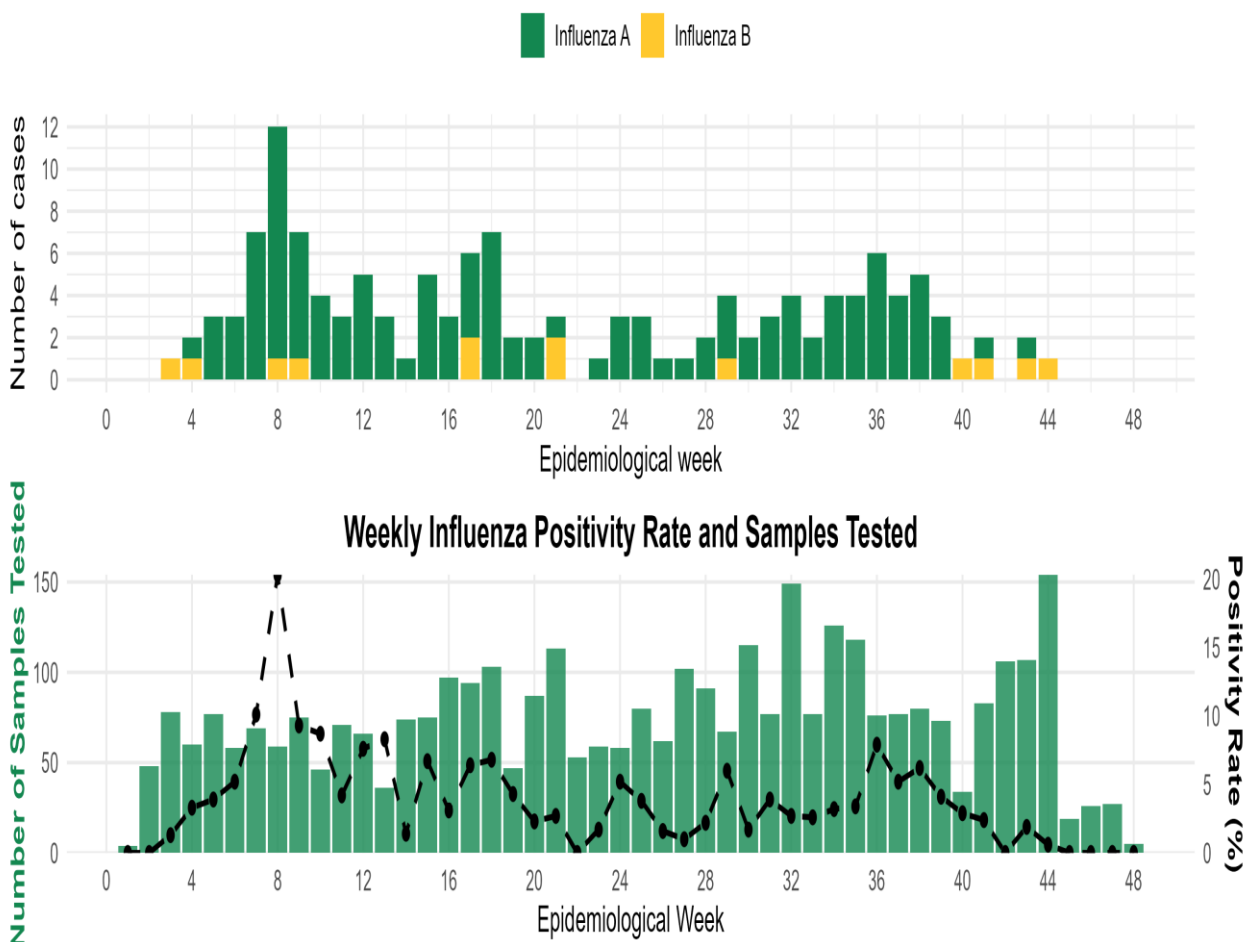
**Table 20: Week 50**

Suspected cases	Confirmed cases	Confirmed Case by type	
		Influenza A	Influenza B
0	0	0	0

**Table 21: Year to date (Week 1 – 50, 2024/2025)**

Suspected cases	Confirmed cases	Confirmed Case by type	
		Influenza A	Influenza B
3538	137	124	13

*Figure 20: Number of influenza positive specimens by type and percentage positive by epidemiological week, 2025*



## Event-based Surveillance (EBS)

### Week 50

#### Key Point

##### Epi Week 50

- 185 Calls were successfully routed to agents and answered.
- Over 2332 articles scanned through Epidemic Intelligence from Open Sources (EIOS) and other manual sources.
- From the calls, EIOS, and other manual sources, no signal was picked.

##### Cumulatively, 1 – 50

- 7,286 calls were successfully routed to agents and answered.
- 76 Signals picked and escalated.

Figure 21: Number of signals/events per week, 2025.

