

Weekly Epidemiological Report

Week 49: 1st – 7th December 2025

Highlight of the week

PRIVATE SECTOR ENGAGEMENT ON NATIONAL HEALTH SECURITY



The Nigeria Centre for Disease Control and Prevention (NCDC) convened leaders from across Nigeria's private sector at the Private Sector Engagement Roundtable on National Health Security. Discussions and commitments from the Roundtable reinforced a shared understanding that Nigeria's health security depends on strong, sustained collaboration across sectors.

Through keynote presentations, panel discussions, and interactive exchanges, participants explored opportunities to strengthen digital and event-based surveillance; laboratory and genomics capacity; emergency preparedness and response systems; specimen transport and logistics; risk communication and community engagement; and sustainable financing models for epidemic preparedness.

The NCDC acknowledges the contributions of participating organisations and leaders whose engagement demonstrated readiness to co-invest in national resilience. As implementation of the National Action Plan for Health Security (NAPHS) 2.0 progresses, the NCDC remains committed to deepening multisectoral partnerships and strengthening systems essential for a safer and healthier Nigeria.

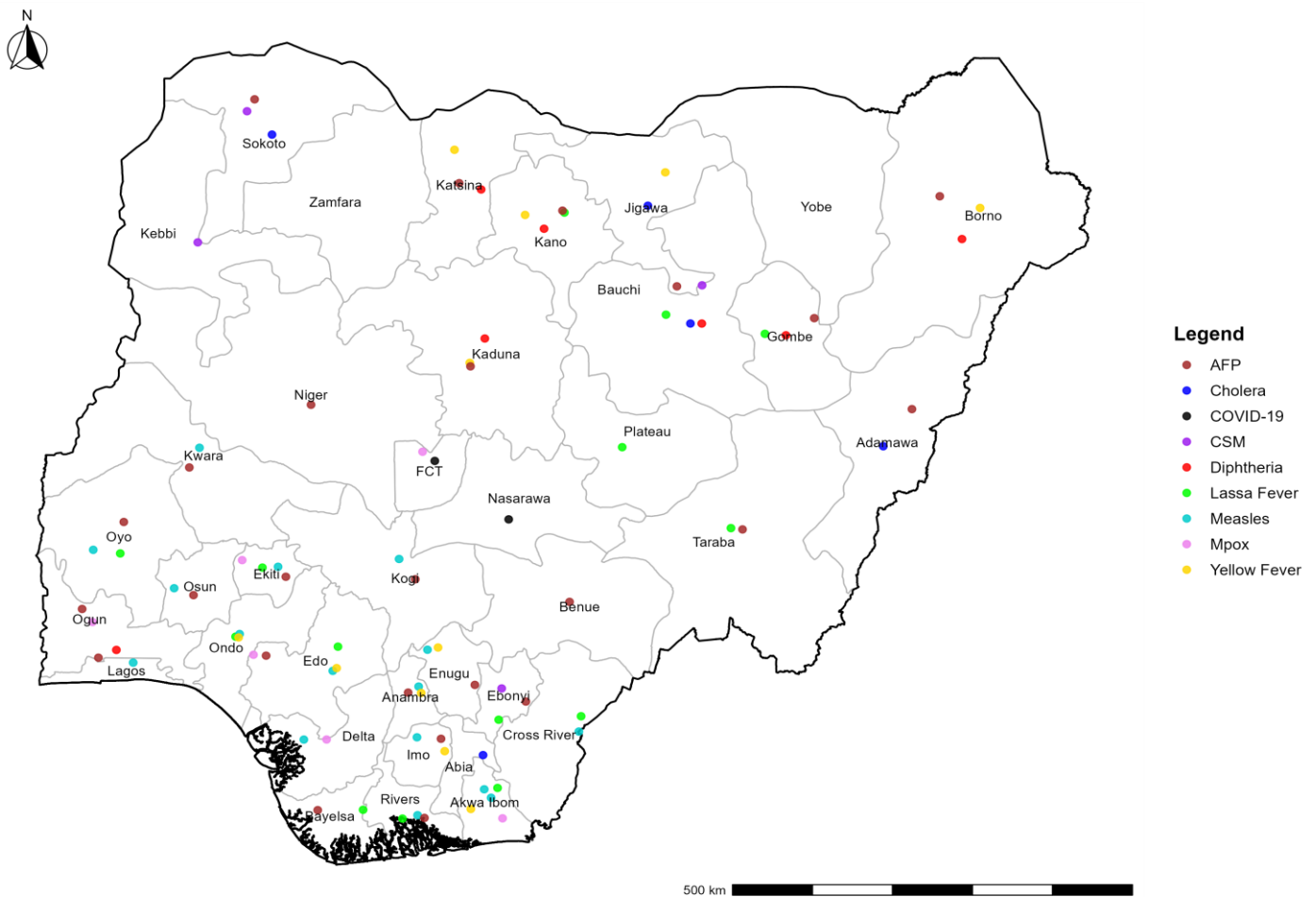
Summary of Incidents

Ongoing Incidents
3

The Ongoing incidents within the reporting week are Cholera, Mpox and Diphtheria.

**Ongoing incidents are defined as confirmed cases where a national EOC or equivalent has been activated.*

Figure 1: Priority Diseases under surveillance in Nigeria, Week 49, 2025



Summary of Diseases

Table 1: Week 49, 1st – 7th December 2025

Lassa Fever₁	Cerebrospinal Meningitis (CSM)₂	Yellow Fever₂
145 Suspected case(s)	4 Suspected case(s)	20 Suspected case(s)
34 Confirmed case(s)	0 Confirmed case(s)	0 Confirmed case(s)
0 Death(s)	1 Death(s)	0 Death(s)
Cholera₂	Measles₂	Mpox₂
141 Suspected case(s)	94 Suspected case(s)	16 Suspected case(s)
0 Confirmed case(s)	0 Confirmed case(s)	3 Confirmed case(s)
2 Death(s)	0 Death(s)	0 Death(s)
Acute Flaccid Paralysis (AFP)₂	COVID-19₂	Diphtheria₂
72 Suspected case(s)	9 Suspected case(s)	551 Suspected case(s)
0 Confirmed case(s)	0 Confirmed case(s)	512 Confirmed case(s)
2 Death(s)	0 Death(s)	8 Death(s)
National Sentinel influenza surveillance₃		
0 Suspected case(s)		
0 Confirmed case(s)		

Information for all the diseases was retrieved from the Technical Working Group and Situation Reports of the Nigerian Centre for Disease Control and Prevention.

1. Case Fatality Rate (CFR) for this disease is reported for confirmed cases only.
2. CFR for this disease is reported for total cases i.e., suspected + confirmed.
3. Information for sentinel influenza was retrieved from the laboratory
4. The data published in 2024 WER may vary with the data of 2024 in 2025 WER due to data harmonisation and updates

Lassa Fever

Table 2: Week 49

Suspected cases	Confirmed cases	Deaths	Number of States and LGAs affected
145	34	0	State: 14 LGA: 29

Table 3: Lassa Fever Year to date (Week 1 – 49, 2024/2025)

Year	Suspected cases	Confirmed cases	Deaths	CFR (%)
2024	9490	1154	191	16.6%
2025	9048	1070	178	16.6%

Figure 2: Trend of suspected and confirmed cases of Lassa Fever by epidemiological, Week 49, 2025

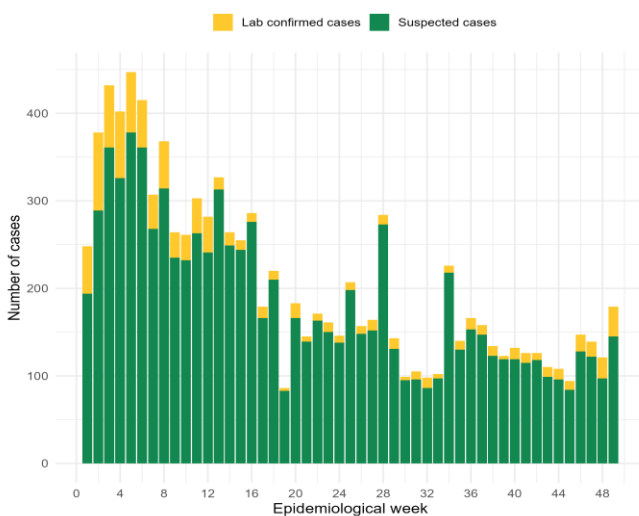
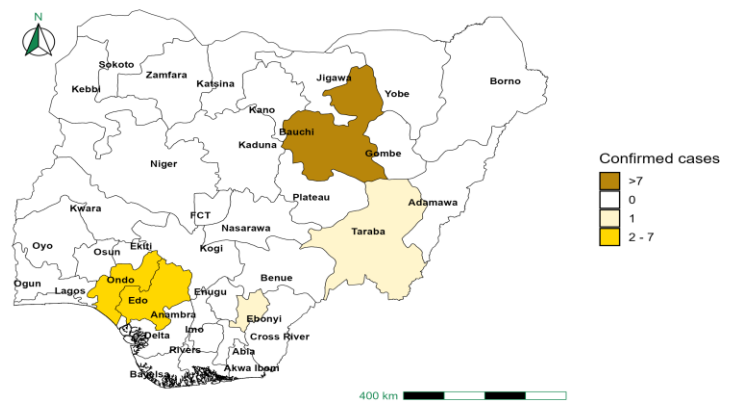


Figure 3: Confirmed cases of Lassa Fever by State, Nigeria, Week 49, 2025



Key Point

- There were 145 suspected cases of Lassa Fever reported from 29 LGAs in 14 states.
- There were 34 laboratory confirmed cases and no death was recorded.

Actions

- National Lassa fever multi-partner, multi-sectoral Technical Working Group (TWG) continues to coordinate the preparedness and response activities at all levels.
- Developed a targeted communication strategy based on the data from the community survey conducted in 3 states and leveraged on partners and stakeholders media platforms to disseminate Lassa Fever messages.

Yellow Fever

Table 6: Week 49

Suspected cases	Confirmed cases	Deaths	Number of States and LGAs affected
20	0	0	State: 11 LGA: 15

Table 7: Yellow Fever Year to date (Week 1 – 49, 2024/2025)

Year	Suspected cases	Confirmed cases	Deaths	CFR (%)
2024	2872	22	2	0.1%
2025	2317	8	6	0.3%

Figure 6: Trend of suspected and confirmed cases of Yellow Fever by epidemiological, Week 49, 2025

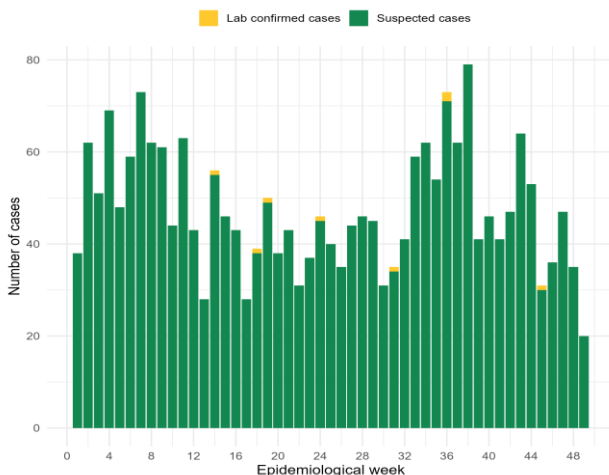
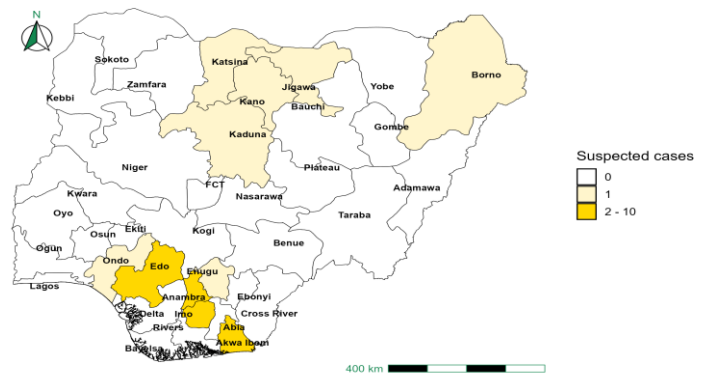


Figure 7: Suspected cases of Yellow Fever by State, Nigeria, Week 49, 2025



Key Points

- There were 20 suspected cases of Yellow Fever (YF) reported from 15 LGAs in 11 states.
- There was no laboratory confirmed case and no death was recorded.

Actions

- National YF multi-partner Technical Working Group (TWG) continues to coordinate activities across states.
- Coordination of YF sample management and transportation from all states to the regional reference laboratories
- Providing offsite/onsite support to states.

Cholera

Table 8: Week 49

Suspected cases	Confirmed cases	Deaths	Number of States and LGAs affected
141	0	2	State: 5 LGA: 6

Table 9: Cholera Year to date (Week 1 – 49, 2024/2025)

Year	Suspected cases	Confirmed cases	Deaths	CFR (%)
2024	24703	409	723	2.9%
2025	21730	147	481	2.2%

Figure 8: Trend of suspected and confirmed cases of Cholera by epidemiological, Week 49, 2025

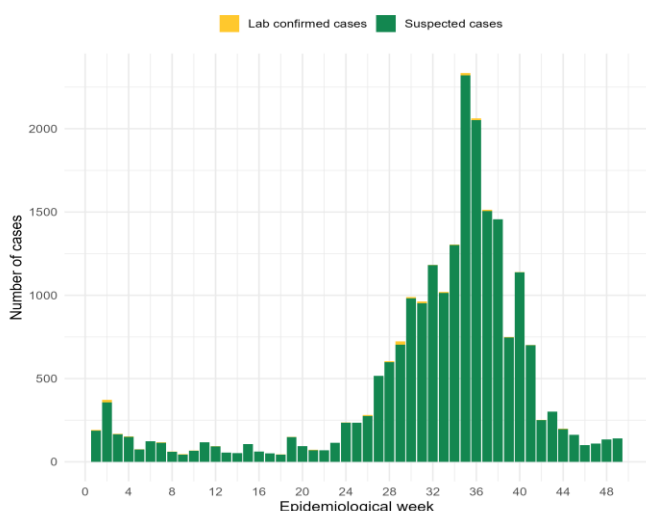
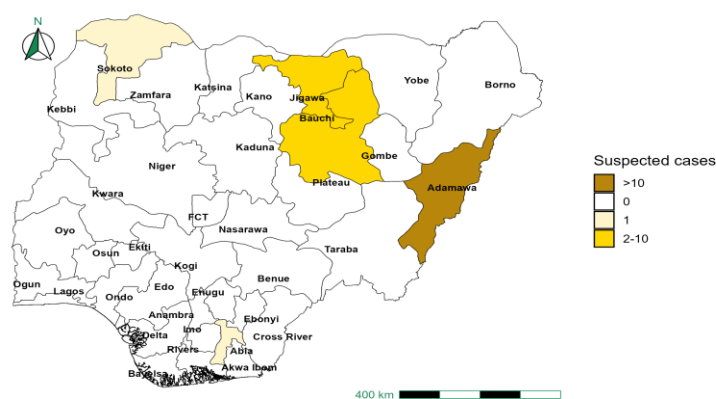


Figure 9: Trend of suspected and confirmed cases of Cholera, Week 49, 2025



Key Point

- There were 141 suspected cases of Cholera reported from six LGAs in five states.
- There was no laboratory confirmed case and two deaths were recorded.

Actions

- National Cholera multi-partner, multi-sectoral Technical Working Group (TWG) continues to coordinate the preparedness and response activities at all levels.
- Biweekly EOC Meetings.
- Providing offsite/onsite support to states.

Measles

Table 10: Week 49

Suspected cases	Confirmed cases	Deaths	Number of States and LGAs affected
94	0	0	State: 16 LGA: 57

Table 11: Measles Year to date (Week 1 – 49, 2024/2025)

Year	Suspected cases	Confirmed cases	Deaths	CFR (%)
2024	19944	9814	123	0.6%
2025	27392	19225	153	0.6%

Figure 10: Trend of suspected and confirmed cases of Measles by epidemiological, Week 49, 2025

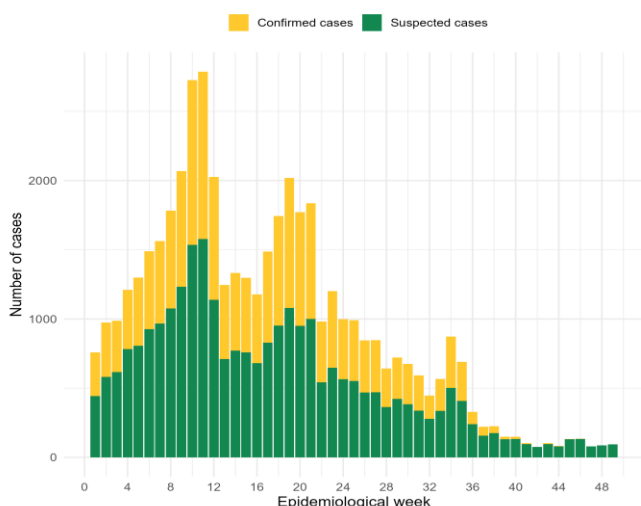
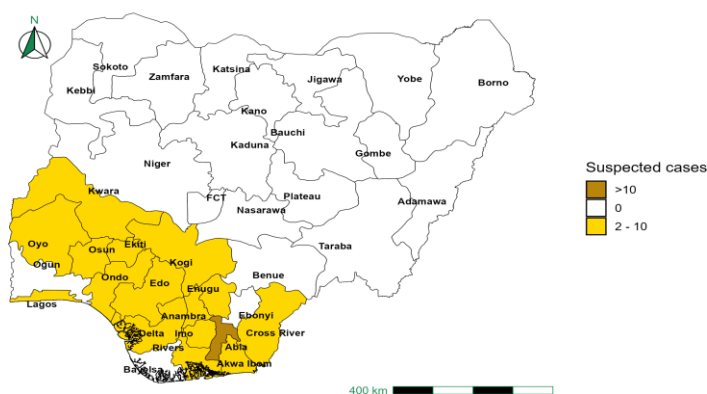


Figure 11: Suspected cases of Measles by State, Nigeria, Week 49, 2025



Key Point

- There were 94 suspected cases of Measles reported from 57 LGAs in 16 states.
- There was no confirmed case and no death was recorded.

Actions

- National Measles Technical Working Group (TWG) is monitoring activities in all states.
- Provision of off-site surveillance support to affected States.
- Harmonisation of surveillance and laboratory data from across states and laboratories.

Mpox

Table 12: Week 49

Suspected cases	Confirmed cases	Deaths	Number of States and LGAs affected
16	3	0	State: 2 LGA: 7

Table 13: Mpox Year to date (Week 1 – 49, 2024/2025)

Year	Suspected cases	Confirmed cases	Deaths	CFR (%)
2024	1820	170	0	0%
2025	1697	423	4	0.2%

Figure 12: Trend of suspected and confirmed cases of Mpox by epidemiological, Week 49, 2025

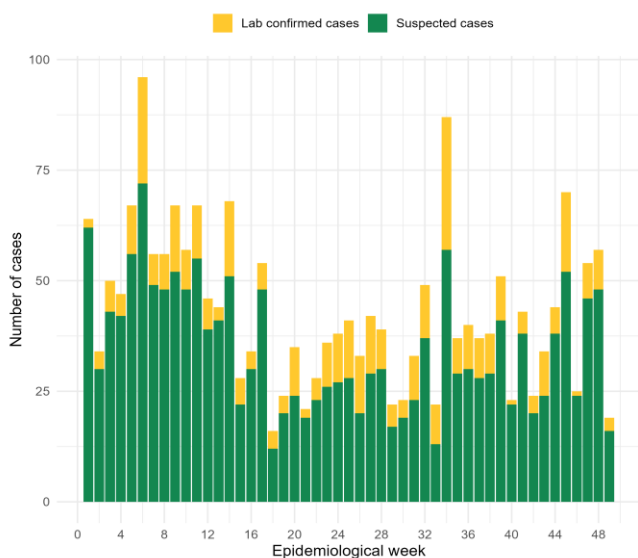


Figure 13: Suspected cases of Mpox by State, Nigeria, Week 49, 2025



Key Point

- There were 16 suspected cases of Mpox reported from seven LGAs in two states.
- There were three laboratory confirmed cases and no death was recorded.

Actions

- National Monkeypox Technical Working Group (TWG) is monitoring activities in all states.
- Weekly EOC meetings.
- Provision of off-site surveillance support to affected States.
- Harmonisation of surveillance and laboratory data from across states and laboratories.

Coronavirus Disease (COVID-19)

Table 16: Week 49

Suspected cases	Confirmed cases	Deaths	Number of States and LGAs affected
9	0	0	State: 1 + FCT LGA: 4

Table 17: COVID-19 Year to date (Week 1 – 49, 2024/2025)

Year	Suspected cases	Confirmed cases	Deaths	CFR (%)
2024	369900	748	1	0.1%
2025	3571	59	0	0%

Figure 16: Trend of suspected and confirmed cases of Covid 19 by epidemiological, Week 49, 2025

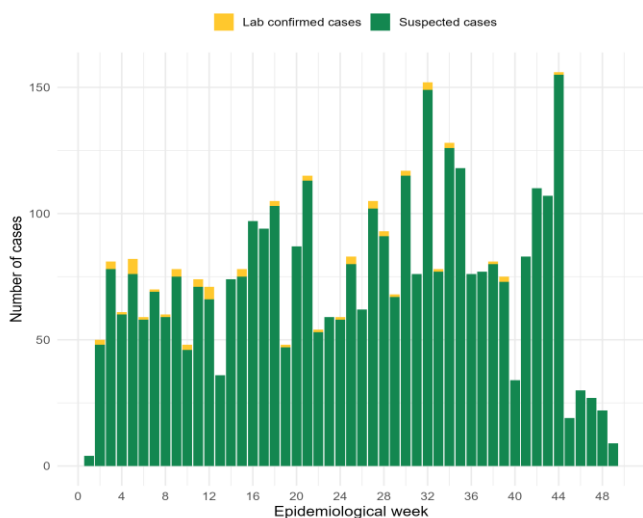
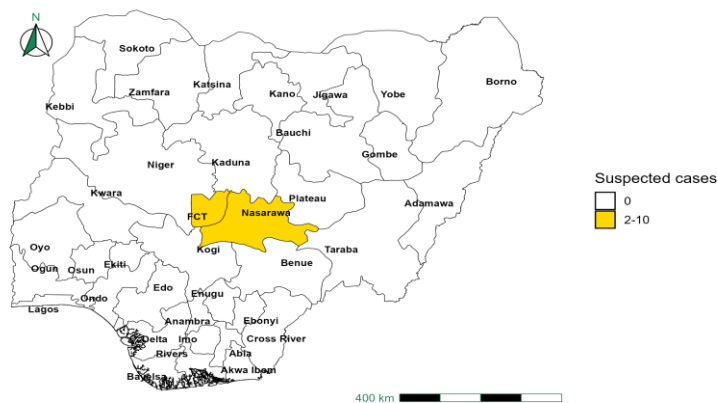


Figure 17: Suspected cases of Covid 19 by State, Nigeria, Week 49, 2025



Key Point

- There were nine suspected cases of Covid-19 reported from four LGAs in Nasarawa state and FCT.
- There was no laboratory confirmed case and no death was recorded.

Actions

- National COVID-19 Technical Working Group (TWG) is monitoring activities in all states
- Harmonisation of surveillance and laboratory data from across states and laboratories
- Provision of off-site surveillance support to affected States

Diphtheria

Table 18: Week 49

Suspected cases	Confirmed cases	Deaths	Number of States and LGAs affected
551	512	8	State: 7 LGA: 39

Table 19: Diphtheria Year to date (Week 1 – 49, 2024/2025)

Year	Suspected cases	Confirmed cases	Deaths	CFR (%)
2024	17065	10523	767	4.5%
2025	30245	22924	1923	6.4%

Figure 18: Trend of suspected and confirmed cases of Diphtheria by epidemiological, Week 49, 2025

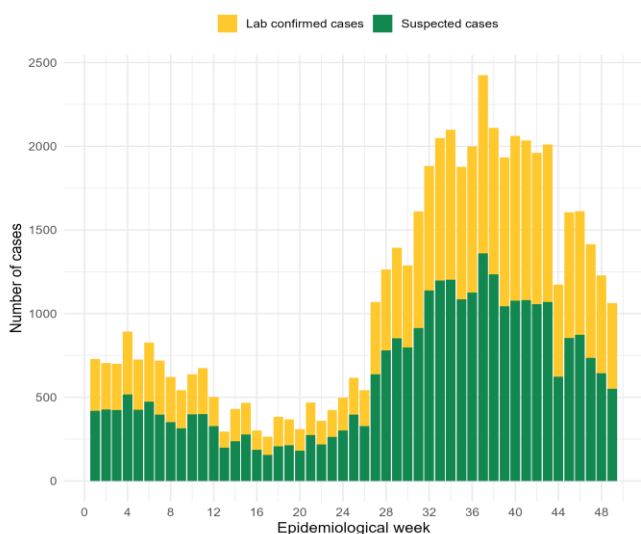


Figure 19: Suspected cases of Diphtheria by State, Nigeria, Week 49, 2025



Key Point

- There were 551 suspected cases of Diphtheria reported from 39 LGAs in seven states.
- There were 512 confirmed cases and eight deaths were recorded.

Actions

- National Diphtheria Technical Working Group (TWG) is monitoring activities in all states.
- Weekly EOC meeting.
- Provide technical and off-site support to states on case identification, reporting, and response, especially to non-reporting and low-burden states.

National Influenza Sentinel Surveillance

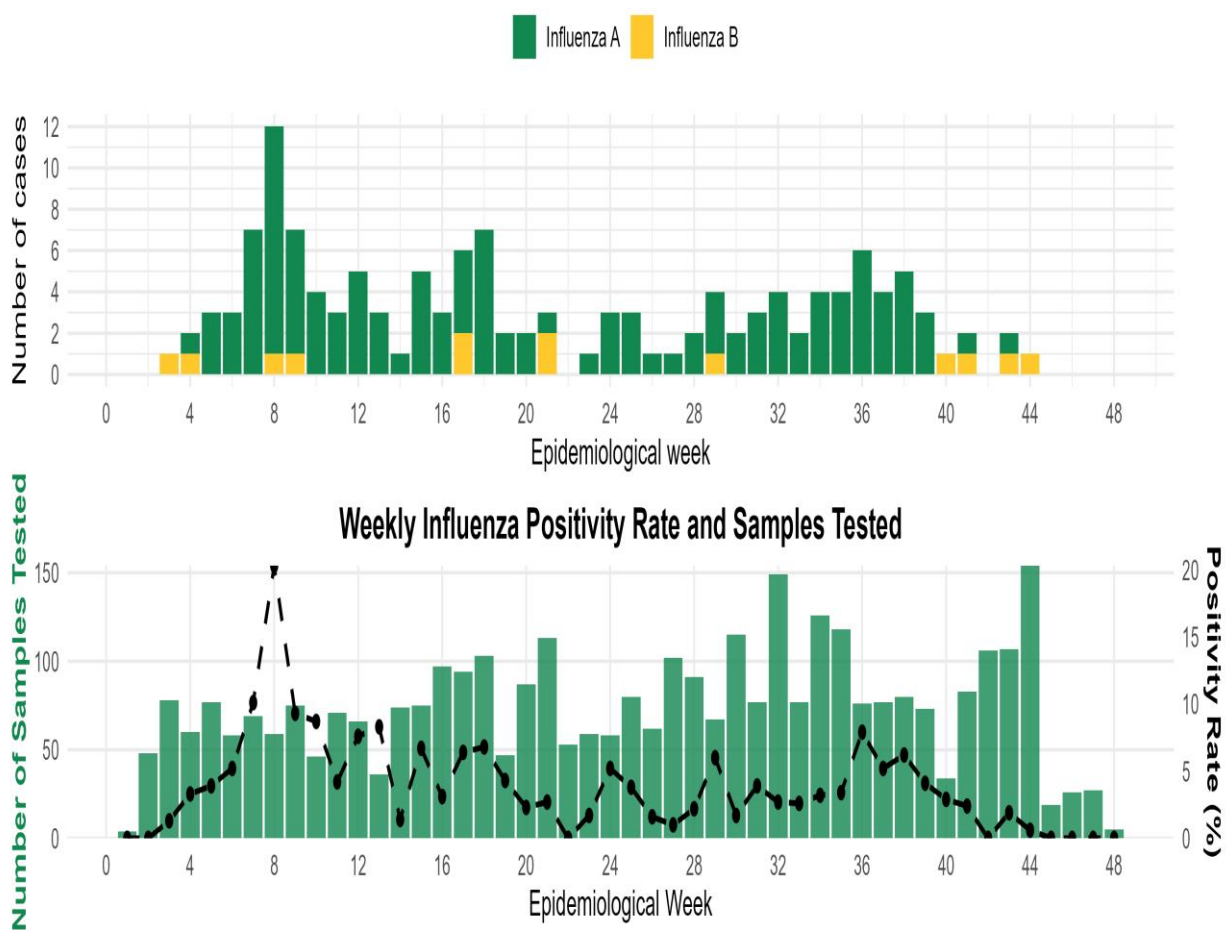
Table 20: Week 49

Suspected cases	Confirmed cases	Confirmed Case by type	
		Influenza A	Influenza B
0	0	0	0

Table 21: Year to date (Week 1 – 49, 2024/2025)

Suspected cases	Confirmed cases	Confirmed Case by type	
		Influenza A	Influenza B
3538	137	124	13

Figure 20: Number of influenza positive specimens by type and percentage positive by epidemiological week, 2025



Event-based Surveillance (EBS)

Week 49

Key Point

Epi Week 49

- 154 Calls were successfully routed to agents and answered.
- Over 2213 articles scanned through Epidemic Intelligence from Open Sources (EIOS) and other manual sources.
- From the calls, EIOS, and other manual sources, two signals were picked.

Cumulatively, 1 - 49

- 7,101 calls were successfully routed to agents and answered.
- 76 Signals picked and escalated.

Figure 21: Number of signals/events per week, 2025.

