

## Weekly Epidemiological Report

Week 23: 2<sup>nd</sup> – 8<sup>th</sup> June 2025

### Highlight of the week

#### **FCT DISSEMINATION MEETING ON JOINT EXTERNAL EVALUATION (JEE)**



On the second of June 2025, the Federal Capital Territory Administration (FCTA) convened stakeholders for the Dissemination Meeting of the FCT Joint External Evaluation (JEE), marking an important milestone in strengthening subnational health security and emergency preparedness.

The meeting brought together representatives from government ministries, departments, agencies, and partners to share the outcomes of the JEE, reflect on strengths and gaps, and agree on priority actions to improve International Health Regulations (IHR) core capacities in the FCT.

The Nigeria Centre for Disease Control and Prevention (NCDC), as Nigeria's IHR National Focal Point, provided technical support throughout the process, including facilitation, coordination, and guidance on next steps. This collaboration underscores Nigeria's commitment to the IHR (2005) and the One Health approach, while advancing collective health security.

## Summary of Incidents

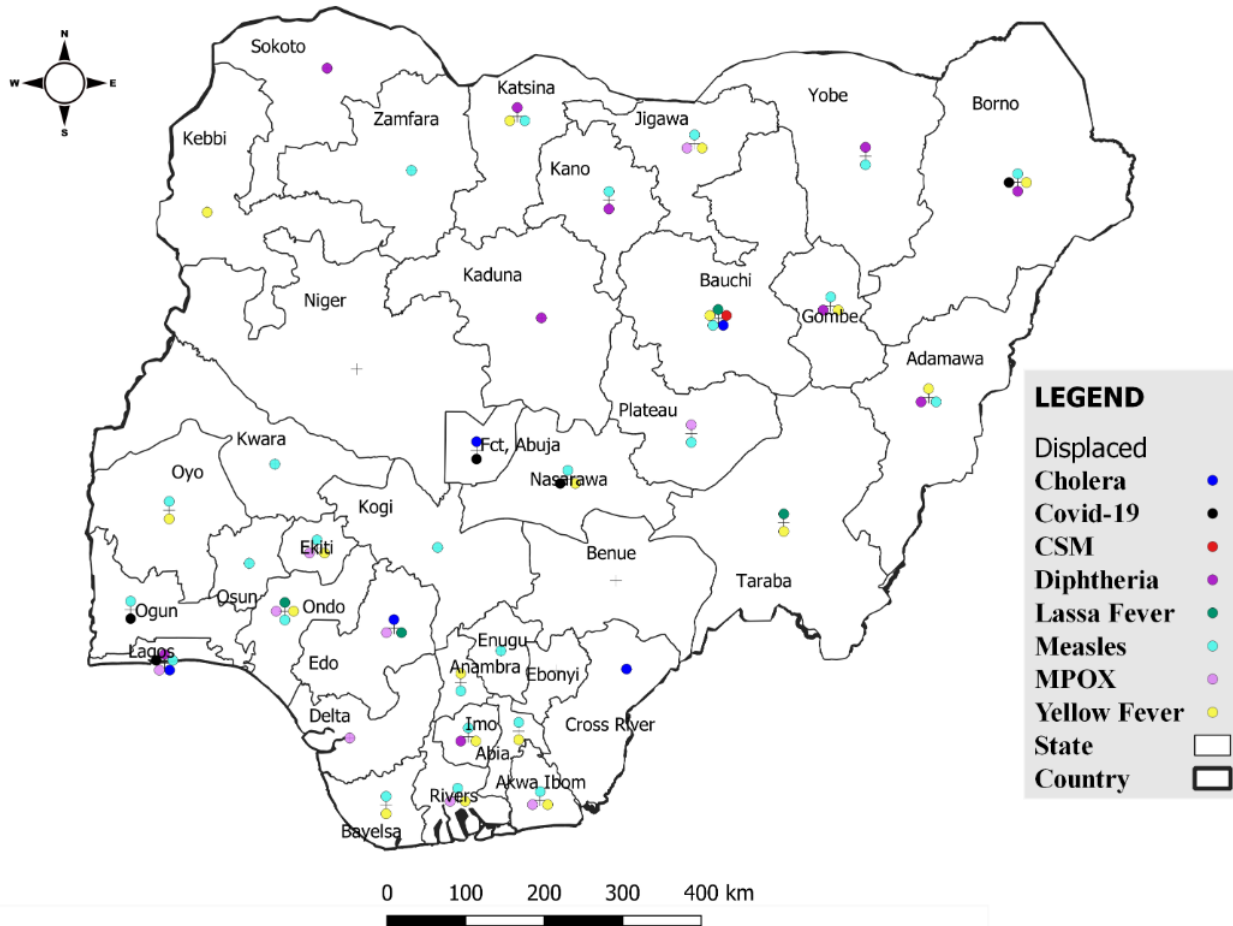
**Ongoing incidents**

5

The Ongoing incidents within the reporting week are Lassa Fever, CSM, Cholera, Mpox and Diphtheria.

*\*Ongoing incidents are defined as confirmed cases where a national EOC or equivalent has been activated.*

Figure 1: Priority Diseases under surveillance in Nigeria, Week 23, 2025.



## Summary of Diseases

Table 1: Week 23 (2<sup>nd</sup> – 8<sup>th</sup> May 2025)

| Lassa Fever <sub>1</sub>                              | Cerebrospinal Meningitis (CSM) <sub>2</sub> | Yellow Fever <sub>2</sub> |
|---|---|---------------------------|
| 146<br>Suspected case(s)                              | 4<br>Suspected case(s)                      | 31<br>Suspected case(s)   |
| 11<br>Confirmed case(s)                               | 0<br>Confirmed case(s)                      | 0<br>Confirmed case(s)    |
| 1<br>Death(s)   | 0<br>Death(s)                               | 0<br>Death(s)             |
| Cholera <sub>2</sub>                                  | Measles <sub>2</sub>                        | Mpox <sub>2</sub>         |
| 11<br>Suspected case(s)                               | 305<br>Suspected case(s)                    | 26<br>Suspected case(s)   |
| 0<br>Confirmed case(s)                                | 230<br>Confirmed case(s)                    | 10<br>Confirmed case(s)   |
| 0<br>Death(s)   | 0<br>Death(s)                               | 0<br>Death(s)             |
| Acute Flaccid Paralysis (AFP) <sub>2</sub>            | COVID-19 <sub>2</sub>                       | Diphtheria <sub>2</sub>   |
| 35<br>Suspected case(s)                               | 59<br>Suspected case(s)                     | 141<br>Suspected case(s)  |
| 0<br>Confirmed case(s)                                | 0<br>Confirmed case(s)                      | 91<br>Confirmed case(s)   |
| 0<br>Death(s)   | 0<br>Death(s)                               | 4<br>Death(s)             |
| National Sentinel influenza surveillance <sub>3</sub> |   |                           |
| 59<br>Suspected case(s)                               |   |                           |
| 1<br>Confirmed case(s)                                |   |                           |

Information for all the diseases was retrieved from the Technical Working Group and Situation Reports of Nigerian Centre for Disease Control and Prevention

1. Case Fatality Rate (CFR) for this disease is reported for confirmed cases only.
2. CFR for this disease is reported for total cases i.e. suspected + confirmed.
3. Information for sentinel influenza was retrieved from the laboratory.

## Lassa Fever

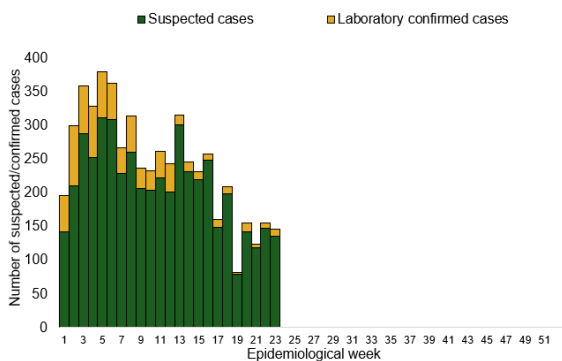
**Table 1: Week 23**

| Suspected cases | Confirmed cases | Deaths | Number of States and LGAs affected |
|-----------------|-----------------|--------|------------------------------------|
| 146             | 11              | 1      | State: 10<br>LGA: 14               |

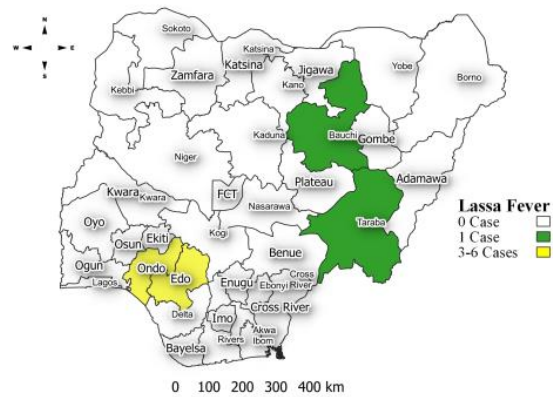
**Table 2: Lassa Fever Year to date (Week 1 – 23, 2024/2025)**

| Suspected cases |       | Confirmed cases |      | Deaths |      | CFR   |       |
|-----------------|-------|-----------------|------|--------|------|-------|-------|
| 2024            | 2025  | 2024            | 2025 | 2024   | 2025 | 2024  | 2025  |
| 6,704           | 5,540 | 911             | 758  | 162    | 143  | 17.8% | 18.9% |

*Figure 2: Trend of suspected and confirmed cases of Lassa Fever by epidemiological week, 2025.*



*Figure 3: Confirmed cases of Lassa Fever by State, Nigeria, week 23, 2025.*



### Key points

- There were 146 suspected cases of Lassa Fever reported from 14 LGAs in 10 states. There were 11 laboratory confirmed cases and one death was recorded.

### Actions

#### To date:

- National Lassa fever multi-partner, multi-sectoral Technical Working Group (TWG) continues to coordinate the response activities at all levels.
- Clinician sensitization conducted in 6 Lassa Fever hotspot LGAs in Ondo State with support from WHO.
- Ebonyi State successfully conducted the After-Action Review of the 2024/2025 outbreak season with the support of Pro-Health International.
- Conducted a National Lassa fever dynamic risk assessment.

## Cerebrospinal Meningitis (CSM)

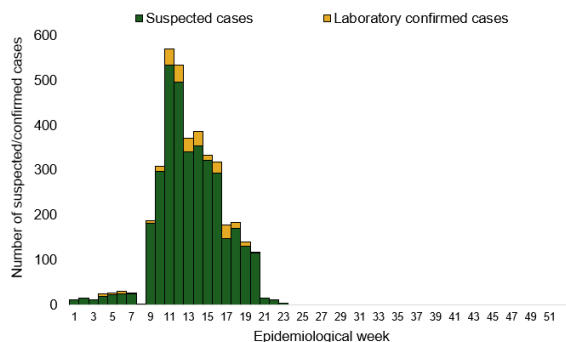
**Table 4: Week 23**

| Suspected cases | Confirmed cases | Deaths | Number of States and LGAs affected |
|-----------------|-----------------|--------|------------------------------------|
| 4               | 0               | 0      | State: 1<br>LGA: 1                 |

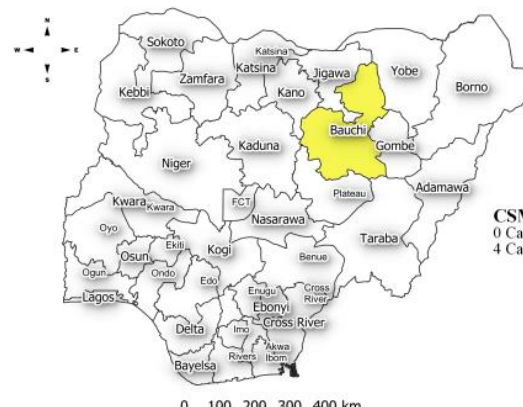
**Table 5: CSM Year to date (Week 1 – 23, 2024/2025)**

| Suspected cases |       | Confirmed cases |      | Deaths |      | CFR  |      |
|-----------------|-------|-----------------|------|--------|------|------|------|
| 2024            | 2025  | 2024            | 2025 | 2024   | 2025 | 2024 | 2025 |
| 2,996           | 3,807 | 50              | 262  | 128    | 238  | 4.3% | 6.3% |

*Figure 4: Trend of suspected and confirmed cases of CSM by epidemiological week, 2025.*



*Figure 5: Suspected cases of CSM by State, Nigeria, week 23, 2025.*



### Key points

- There were four suspected cases of Cerebrospinal meningitis (CSM) reported from one LGA in Bauchi state. There was no laboratory confirmed case and no death was recorded.

### Actions

#### To date:

- National CSM multi-partner Technical Working Group (TWG) continues to coordinate activities across states.
- Surveillance in all states through routine Integrated Disease Surveillance and Response (IDSR) and Event- Based Surveillance (EBS).
- Providing offsite/onsite support to states and follow up for daily reporting and progress with response activities.

## Yellow Fever

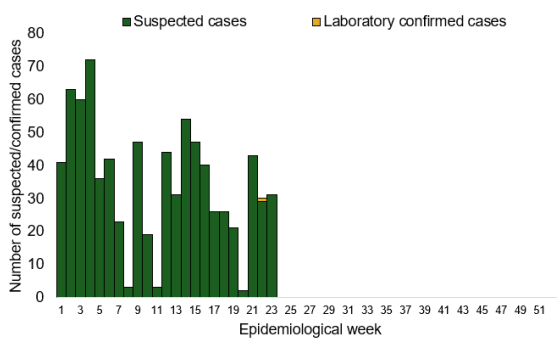
**Table 6: Week 23**

| Suspected cases | Confirmed cases | Deaths | Number of States and LGAs affected |
|-----------------|-----------------|--------|------------------------------------|
| 31              | 0               | 0      | State: 17<br>LGA: 26               |

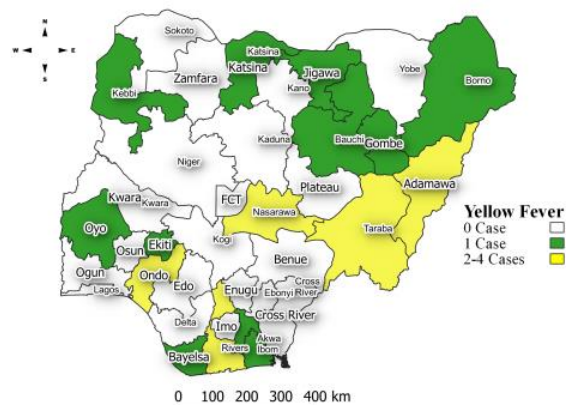
**Table 7: Yellow Fever Year to date (Week 1 – 23, 2024/2025)**

| Suspected cases |       | Confirmed cases |      | Deaths |      | CFR  |      |
|-----------------|-------|-----------------|------|--------|------|------|------|
| 2024            | 2025  | 2024            | 2025 | 2024   | 2025 | 2024 | 2025 |
| 1,378           | 1,185 | 7               | 8    | 2      | 0    | 0.1% | 0%   |

*Figure 6: Trend of suspected and confirmed cases of Yellow Fever by epidemiological week, 2025.*



*Figure 7: Suspected cases of Yellow Fever by State, Nigeria, week 23, 2025.*



### Key points

- There were 31 suspected cases of Yellow Fever (YF) reported from 26 LGAs in 17 states. There was no laboratory confirmed case and no death was recorded.

### Actions

#### To date:

- National YF multi-partner Technical Working Group (TWG) continues to coordinate activities across states.
- Surveillance in all states through the routine Integrated Disease Surveillance and Response (IDSR)
- Providing offsite/onsite support to states and follow up for daily reporting and progress with response activities

## Cholera

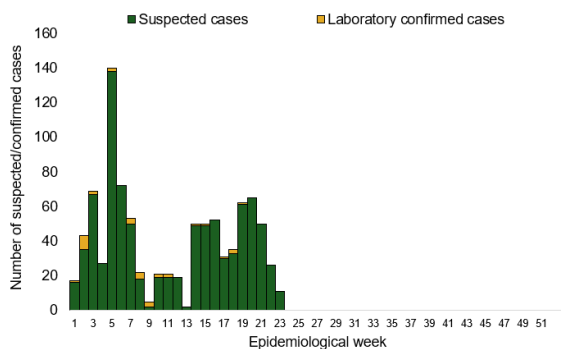
**Table 8: Week 23**

| Suspected cases | Confirmed cases | Deaths | Number of States and LGAs affected |
|-----------------|-----------------|--------|------------------------------------|
| 11              | 0               | 0      | State: 4 + FCT<br>LGA: 7           |

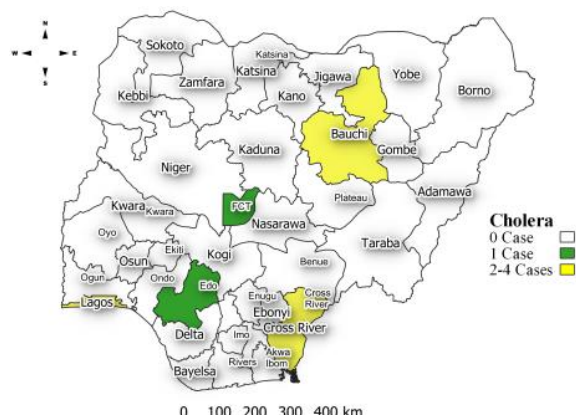
**Table 9: Cholera Year to date (Week 1 – 23, 2024/2025)**

| Suspected cases |       | Confirmed cases |      | Deaths |      | CFR  |      |
|-----------------|-------|-----------------|------|--------|------|------|------|
| 2024            | 2025  | 2024            | 2025 | 2024   | 2025 | 2024 | 2025 |
| 2,138           | 1,932 | 10              | 44   | 38     | 58   | 1.8% | 3%   |

*Figure 8: Trend of suspected and confirmed cases of Cholera by epidemiological week, 2025.*



*Figure 9: Trend of suspected and confirmed cases of Cholera, week 23, 2025.*



### Key points

- There were 11 suspected cases of Cholera reported from seven LGAs in four states and FCT. There was no laboratory confirmed case and no death was recorded.

### Actions

#### To date:

- National Cholera Multi-Sectoral Technical Working Group (TWG) is monitoring all states and supporting affected states.
- Surveillance in all states through the routine Integrated Disease Surveillance and Response (IDSR)
- Providing offsite/onsite support to states and follow up for daily reporting and progress with response activities

## Measles

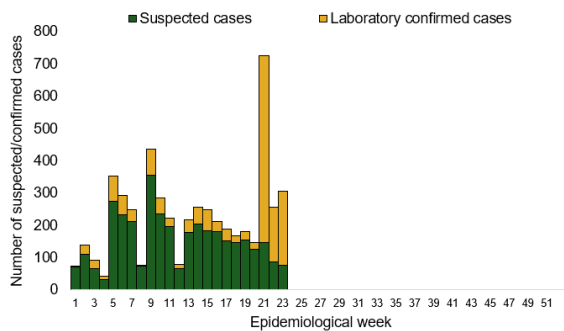
**Table 10: Week 23**

| Suspected cases | Confirmed cases | Deaths | Number of States and LGAs affected |
|-----------------|-----------------|--------|------------------------------------|
| 305             | 230             | 0      | State: 26<br>LGA: 73               |

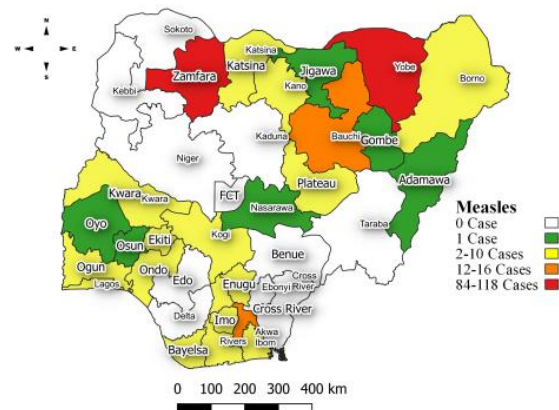
**Table 11: Measles Year to date (Week 1 – 23, 2024/2025)**

| Suspected cases |        | Confirmed cases |       | Deaths |      | CFR  |      |
|-----------------|--------|-----------------|-------|--------|------|------|------|
| 2024            | 2025   | 2024            | 2025  | 2024   | 2025 | 2024 | 2025 |
| 15,137          | 14,182 | 1,989           | 9,269 | 112    | 0    | 0.7% | 0%   |

*Figure 10: Trend of suspected and confirmed cases of Measles by epidemiological week, 2025.*



*Figure 11: Suspected cases of Measles by State, Nigeria, week 23, 2025.*



### Key points

- There were 305 suspected cases of Measles reported from 73 LGAs in 26 states. There were 230 laboratory confirmed cases and no death was recorded.

### Actions

#### To date:

- National Measles Multi-Sectoral Technical Working Group (TWG) is closely monitoring measles surveillance data and providing feedback to relevant agencies and development partners.
- Harmonisation of laboratory results from across the laboratories.
- Weekly feedback of key performance indicators to measles laboratories.
- Providing offsite/onsite support to states and follow up for daily reporting and progress with response activities

## Mpox

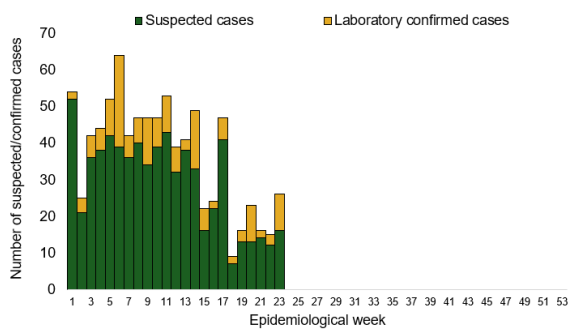
**Table 12: Week 23**

| Suspected cases | Confirmed cases | Deaths | Number of States and LGAs affected |
|-----------------|-----------------|--------|------------------------------------|
| 26              | 10              | 0      | State: 10<br>LGA: 20               |

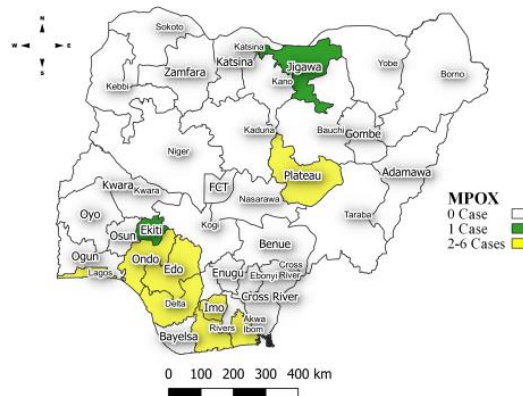
**Table 13: Year to date (Week 1 – 23, 2024/2025)**

| Suspected cases |      | Confirmed cases |      | Deaths |      | CFR  |      |
|-----------------|------|-----------------|------|--------|------|------|------|
| 2024            | 2025 | 2024            | 2025 | 2024   | 2025 | 2024 | 2025 |
| 606             | 845  | 28              | 168  | 0      | 3    | 0%   | 0.4% |

*Figure 12: Trend of suspected and confirmed cases of Mpox by epidemiological week, 2025.*



*Figure 13: Suspected cases of Mpox by State, Nigeria, week 23, 2025.*



### Key points

- There were 26 suspected cases of Mpox reported from 20 LGAs in 10 states. There were 10 laboratory confirmed cases and no death was recorded.

### Actions

#### To date:

- National Monkeypox Technical Working Group (TWG) is monitoring activities in all states.
- Weekly EOC meetings.
- Provision of off-site surveillance support to affected States.
- Harmonisation of surveillance and laboratory data from across states and laboratories.

## Acute Flaccid Paralysis (AFP)

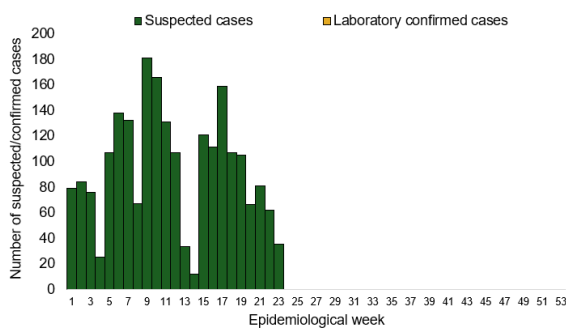
**Table 14: Week 23**

| Suspected cases | Confirmed cases | Deaths | Number of States and LGAs affected |
|-----------------|-----------------|--------|------------------------------------|
| 35              | 0               | 0      | State: 17<br>LGA: 35               |

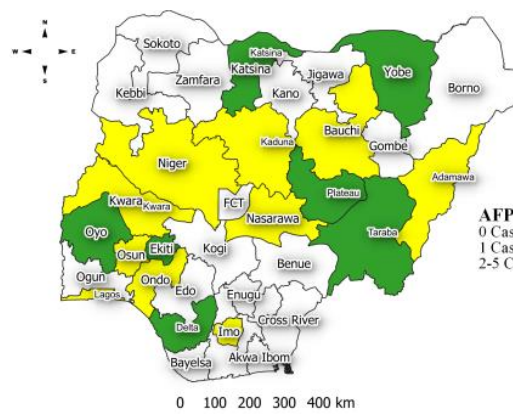
**Table 15: AFP Year to date (Week 1 – 23, 2024/2025)**

| Suspected cases |       | Confirmed cases |      | Deaths |      | CFR  |      |
|-----------------|-------|-----------------|------|--------|------|------|------|
| 2024            | 2025  | 2024            | 2025 | 2024   | 2025 | 2024 | 2025 |
| 3,364           | 2,437 | 0               | 0    | 0      | 0    | 0%   | 0%   |

*Figure 14: Trend of suspected and confirmed cases of AFP by epidemiological week, 2025.*



*Figure 15: Suspected cases of AFP by State, Nigeria, week 23, 2025.*



### Key points

- There were 35 suspected cases of AFP reported from 35 LGAs in 17 states. There was no laboratory confirmed case and no death was recorded.

## COVID-19

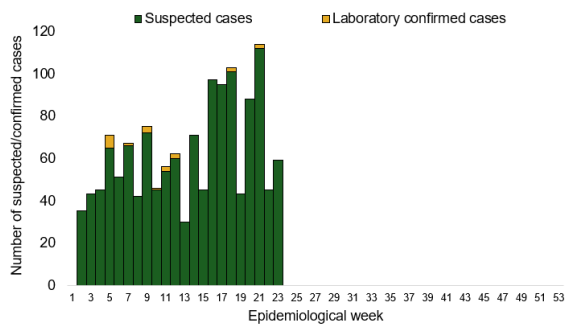
**Table 16: Week 23**

| Suspected cases | Confirmed cases | Deaths | Number of States and LGAs affected |
|-----------------|-----------------|--------|------------------------------------|
| 59              | 0               | 0      | State: 4 + FCT<br>LGA: 21          |

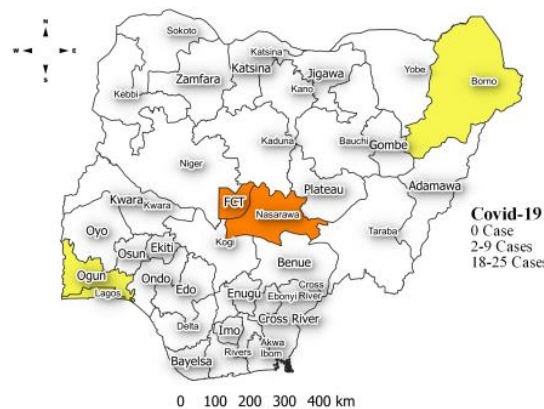
**Table 17: COVID-19 Year to date (Week 1- 23, 2024/2025)**

| Suspected cases |       | Confirmed cases |      | Deaths |      | CFR  |      |
|-----------------|-------|-----------------|------|--------|------|------|------|
| 2024            | 2025  | 2024            | 2025 | 2024   | 2025 | 2024 | 2025 |
| 795             | 1,445 | 795             | 24   | 1      | 0    | 0.1% | 0%   |

*Figure 16: Trend of suspected and confirmed cases of COVID-19 by epidemiological week, 2025.*



*Figure 17: Suspected cases of COVID-19 by State, Nigeria, week 23, 2025.*



### Key points

- There were 59 suspected cases of COVID-19 reported from 21 LGAs in four states and FCT. There was no laboratory confirmed case and no death was recorded.

### Actions

#### To date:

- National COVID-19 Technical Working Group (TWG) is monitoring activities in all states.
- Harmonisation of surveillance and laboratory data from across states and laboratories.
- Provision of off-site surveillance support to affected States.

## Diphtheria

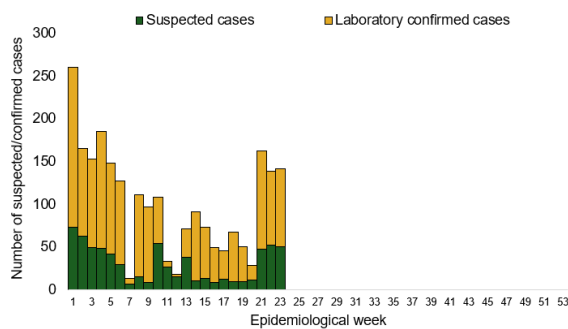
**Table 18: Week 23**

| Suspected cases | Confirmed cases | Deaths | Number of States and LGAs affected |
|-----------------|-----------------|--------|------------------------------------|
| 141             | 91              | 4      | State: 10<br>LGA: 31               |

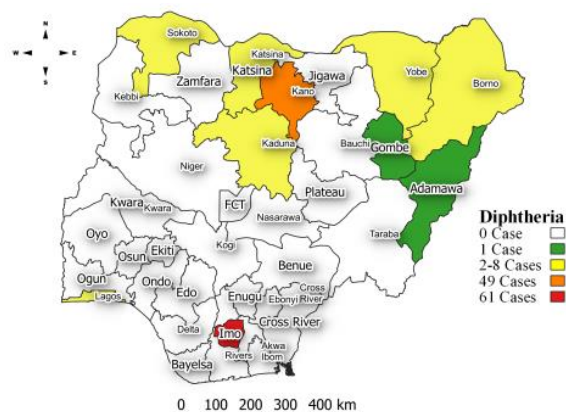
**Table 19: Diphtheria Year to date (week 1 – 23, 2024/2025)**

| Suspected cases |       | Confirmed cases |       | Deaths |      | CFR  |      |
|-----------------|-------|-----------------|-------|--------|------|------|------|
| 2024            | 2025  | 2024            | 2025  | 2024   | 2025 | 2024 | 2025 |
| 10,371          | 3,820 | 6,755           | 2,538 | 172    | 142  | 1.7% | 3.7% |

*Figure 18: Trend of suspected and confirmed cases of Diphtheria by epidemiological week, 2025.*



*Figure 19: Suspected cases of Diphtheria by State, Nigeria, week 23 2025.*



### Key points

- There were 141 suspected cases of Diphtheria reported from 31 LGAs in 10 states. There were 91 confirmed cases and four deaths were recorded.

### Actions

#### To date:

- National Diphtheria Technical Working Group (TWG) is monitoring activities in all states.
- Weekly EOC meeting.
- Provide technical and off-site support to states on case identification, reporting, and response, especially to non-reporting and low-burden states.
- Data harmonization with laboratory and case management pillars.

## National Influenza Sentinel Surveillance

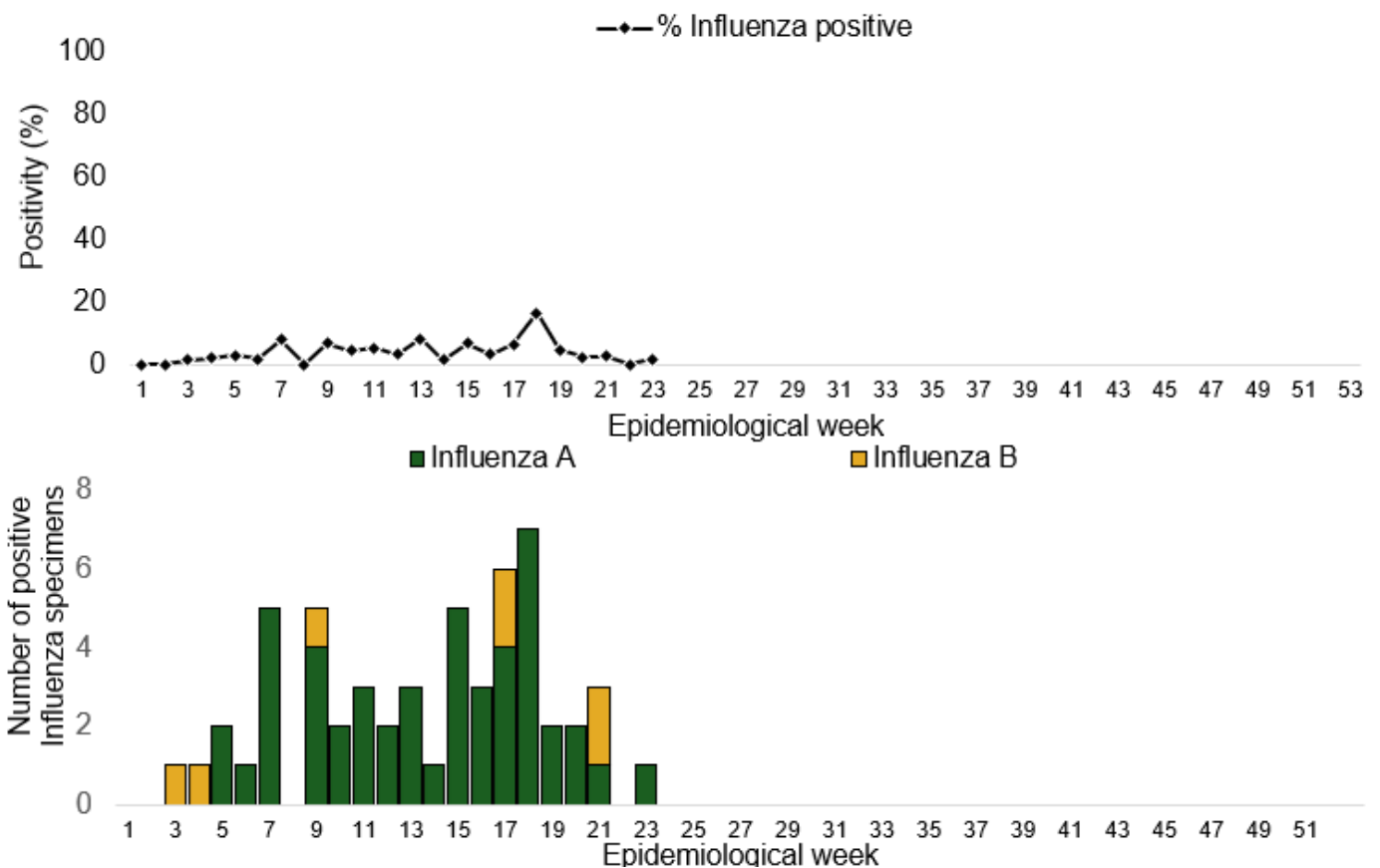
**Table 20: Week 23**

| Suspected cases | Confirmed Cases | Confirmed Case by type |             |
|-----------------|-----------------|------------------------|-------------|
|                 |                 | Influenza A            | Influenza B |
| 59              | 1               | 1                      | 0           |

**Table 21: Year to date (week 1 – 23)**

| Suspected cases | Total Confirmed Cases | Confirmed Case by type |             |
|-----------------|-----------------------|------------------------|-------------|
|                 |                       | Influenza A            | Influenza B |
| 1,549           | 80                    | 72                     | 8           |

*Figure 20: Number of influenza positive specimens by type and percentage positive by epidemiological week, 2025.*



## Event Based Surveillance (EBS)

### Week 23

#### Key points

##### Epi Week 23

- 102 calls were successfully routed to agents and answered.
- Over 2,500 articles scanned through Epidemic Intelligence from Open Sources (EIOS) and other manual sources.
- From the calls, EIOS, and other manual sources, one signal was picked.

##### Cumulatively, from week 1 - 23

- 2,694 calls were successfully routed to agents and answered.
- 37 Signals were picked and escalated.

Figure 22: Number of signals/events per week, 2025.

