

## Weekly Epidemiological Report

Week 22: 26<sup>th</sup> May – 1<sup>st</sup> June 2025

### Highlight of the week

#### **STRENGTHENING DIGITAL DISEASE SURVEILLANCE THROUGH SORMAS**



The Nigeria Centre for Disease Control and Prevention (NCDC) has continued to advance the nationwide rollout of the Surveillance, Outbreak Response Management and Analysis System (SORMAS), extending its use across all states and the Federal Capital Territory. Local Government Areas are now actively reporting through the platform, reflecting steady progress in embedding digital tools at the grassroots level.

Through ongoing capacity-building efforts, healthcare workers at state, LGA, and health facility levels have been trained to apply SORMAS for case-based surveillance and outbreak management. This has led to stronger integration of surveillance at the facility level, more timely and reliable data reporting, quicker detection of outbreaks, and better coordination of infection prevention and control.

These milestones highlight the value of digital innovations in strengthening Nigeria's epidemic intelligence and response systems. NCDC remains committed to sustaining this progress and ensuring a more resilient, responsive, and efficient public health system for the country.

## Summary of Incidents

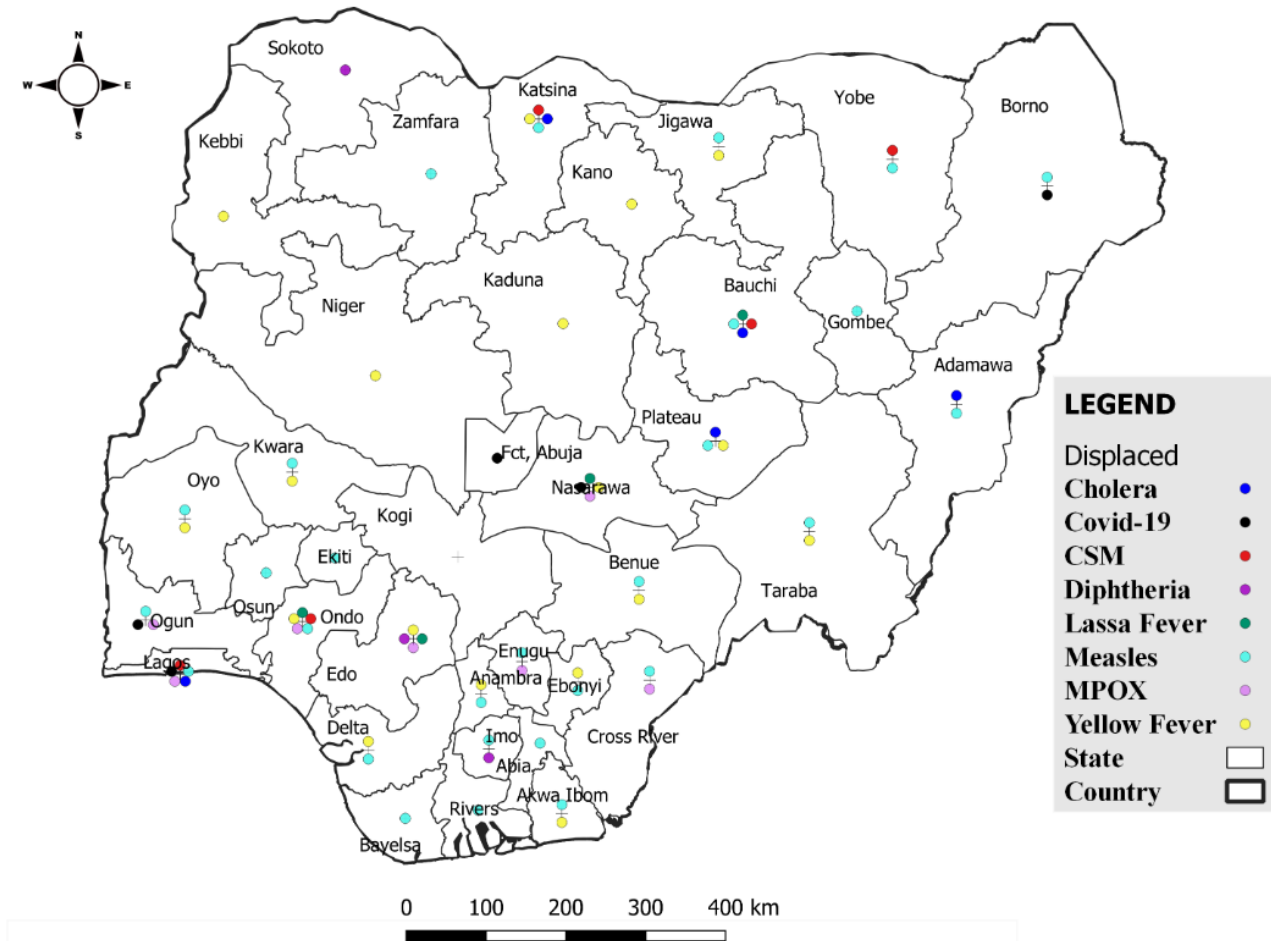
Ongoing incidents

5

The Ongoing incidents within the reporting week are Lassa Fever, CSM, Cholera, Mpox and Diphtheria.

*\*Ongoing incidents are defined as confirmed cases where a national EOC or equivalent has been activated.*

*Figure 1: Priority Diseases under surveillance in Nigeria, Week 22, 2025.*



## Summary of Diseases

Table 1: Week 22 (26<sup>th</sup> May – 1<sup>st</sup> June 2025)

Lassa Fever <sub>1</sub>	Cerebrospinal Meningitis (CSM) <sub>2</sub>	Yellow Fever <sub>2</sub>
155 Suspected case(s)	11 Suspected case(s)	30 Suspected case(s)
8 Confirmed case(s)	0 Confirmed case(s)	1 Confirmed case(s)
0 Death(s)	0 Death(s)	0 Death(s)
Cholera <sub>2</sub>	Measles <sub>2</sub>	Mpox <sub>2</sub>
26 Suspected case(s)	255 Suspected case(s)	15 Suspected case(s)
0 Confirmed case(s)	169 Confirmed case(s)	3 Confirmed case(s)
0 Death(s)	0 Death(s)	0 Death(s)
Acute Flaccid Paralysis (AFP) <sub>2</sub>	COVID-19 <sub>2</sub>	Diphtheria <sub>2</sub>
62 Suspected case(s)	45 Suspected case(s)	138 Suspected case(s)
0 Confirmed case(s)	0 Confirmed case(s)	86 Confirmed case(s)
0 Death(s)	0 Death(s)	3 Death(s)
National Sentinel influenza surveillance <sub>3</sub>		
53 Suspected case(s)		
0 Confirmed case(s)		

Information for all the diseases was retrieved from the Technical Working Group and Situation Reports of Nigerian Centre for Disease Control and Prevention

1. Case Fatality Rate (CFR) for this disease is reported for confirmed cases only.
2. CFR for this disease is reported for total cases i.e. suspected + confirmed.
3. Information for sentinel influenza was retrieved from the laboratory.

## Lassa Fever

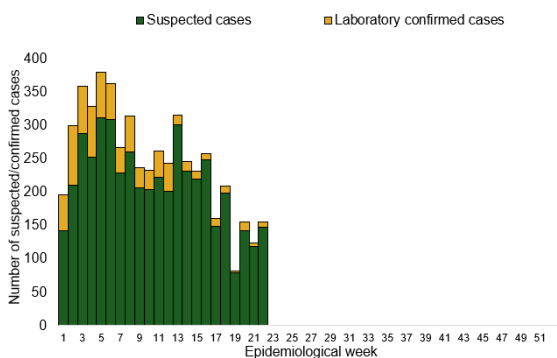
**Table 1: Week 22**

Suspected cases	Confirmed cases	Deaths	Number of States and LGAs affected
155	8	0	State: 6 LGA: 14

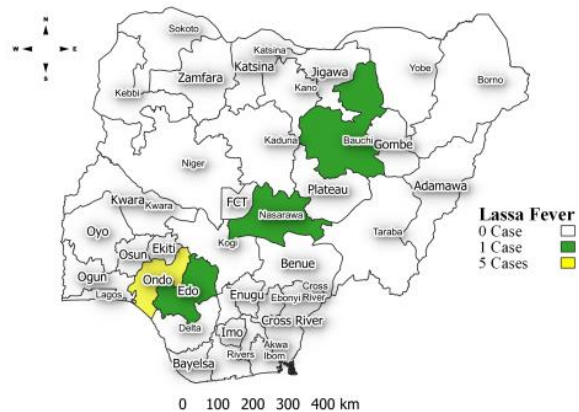
**Table 2: Lassa Fever Year to date (Week 1 – 22, 2024/2025)**

Suspected cases		Confirmed cases		Deaths		CFR	
2024	2025	2024	2025	2024	2025	2024	2025
6,592	5,394	907	747	162	142	17.9%	19%

*Figure 2: Trend of suspected and confirmed cases of Lassa Fever by epidemiological week, 2025.*



*Figure 3: Confirmed cases of Lassa Fever by State, Nigeria, week 22, 2025.*



### Key points

- There were 155 suspected cases of Lassa Fever reported from 14 LGAs in six states. There were eight laboratory confirmed cases and no death was recorded.

### Actions

#### To date:

- National Lassa fever multi-partner, multi-sectoral Technical Working Group (TWG) continues to coordinate the response activities at all levels.
- Providing offsite/onsite support to states.
- Following up on daily reporting and progress with response activities.

## Cerebrospinal Meningitis (CSM)

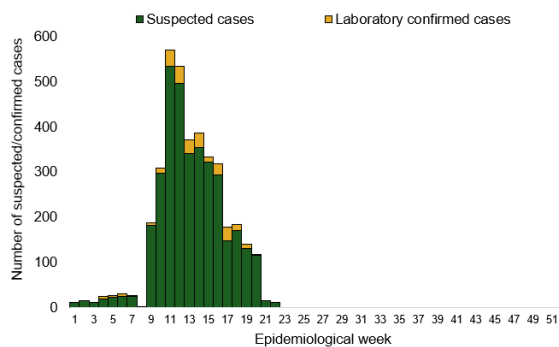
**Table 4: Week 22**

Suspected cases	Confirmed cases	Deaths	Number of States and LGAs affected
11	0	0	State: 5 LGA: 7

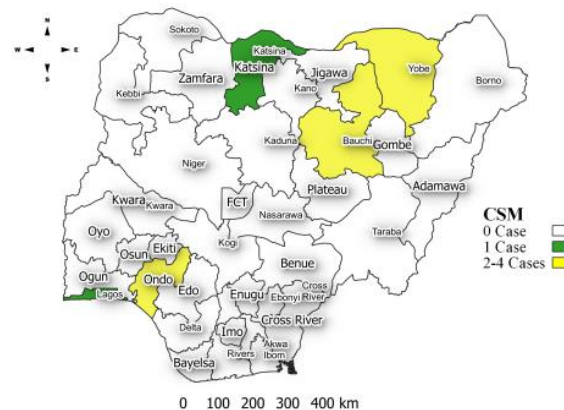
**Table 5: CSM Year to date (Week 1 – 22, 2024/2025)**

Suspected cases		Confirmed cases		Deaths		CFR	
2024	2025	2024	2025	2024	2025	2024	2025
2,986	3,803	50	262	128	238	4.3%	6.3%

*Figure 4: Trend of suspected and confirmed cases of CSM by epidemiological week, 2025.*



*Figure 5: Suspected cases of CSM by State, Nigeria, week 22, 2025.*



### Key points

- There were 11 suspected cases of Cerebrospinal meningitis (CSM) reported from seven LGAs in five states. There was no laboratory confirmed case and no death was recorded.

### Actions

#### To date:

- National CSM multi-partner Technical Working Group (TWG) continues to coordinate activities across states.
- Surveillance in all states through routine Integrated Disease Surveillance and Response (IDSR) and Event- Based Surveillance (EBS).
- Providing offsite/onsite support to states.
- Following up on daily reporting and progress with response activities.

## Yellow Fever

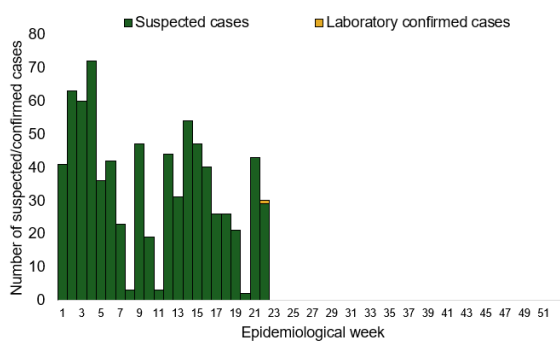
**Table 6: Week 22**

Suspected cases	Confirmed cases	Deaths	Number of States and LGAs affected
30	0	1	State: 18 LGA: 30

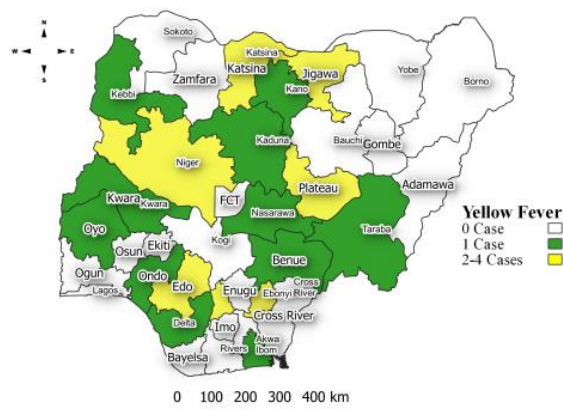
**Table 7: Yellow Fever Year to date (Week 1 – 22, 2024/2025)**

Suspected cases		Confirmed cases		Deaths		CFR	
2024	2025	2024	2025	2024	2025	2024	2025
1,321	1,154	7	8	2	0	0.2%	0%

*Figure 6: Trend of suspected and confirmed cases of Yellow Fever by epidemiological week, 2025.*



*Figure 7: Suspected cases of Yellow Fever by State, Nigeria, week 22, 2025.*



### Key points

- There were 30 suspected cases of Yellow Fever (YF) reported from 30 LGAs in 18 states. There was one laboratory confirmed case and no death was recorded.

### Actions

#### To date:

- National YF multi-partner Technical Working Group (TWG) continues to coordinate activities across states.
- Updating cases in the Surveillance Outbreak Response Management and Analysis System (SORMAS) platform.

## Cholera

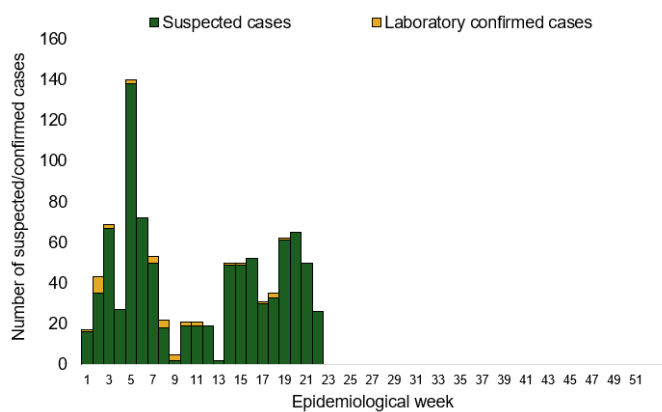
**Table 8: Week 22**

Suspected cases	Confirmed cases	Deaths	Number of States and LGAs affected
26	0	0	State: 5 LGA: 10

**Table 9: Cholera Year to date (Week 1 – 22, 2024/2025)**

Suspected cases		Confirmed cases		Deaths		CFR	
2024	2025	2024	2025	2024	2025	2024	2025
1,881	1,921	4	44	27	58	1.4%	3.0%

*Figure 8: Trend of suspected and confirmed cases of Cholera by epidemiological week, 2025.*



*Figure 9: Trend of suspected and confirmed cases of Cholera, week 22, 2025.*



### Key points

- There were 26 suspected cases of Cholera reported from 10 LGAs in five states. There was no laboratory confirmed case and no death was recorded.

### Actions

#### To date:

- National Cholera Multi-Sectoral Technical Working Group (TWG) is monitoring all states and supporting affected states.
- Surveillance in all states through the routine Integrated Disease Surveillance and Response (IDSR)
- Providing offsite/onsite support to states.
- Following up on daily reporting and progress with response activities

## Measles

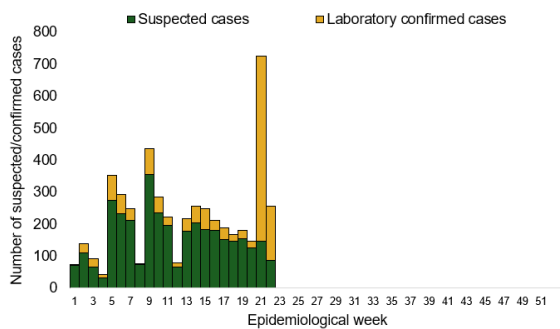
**Table 10: Week 22**

Suspected cases	Confirmed cases	Deaths	Number of States and LGAs affected
255	169	0	State: 29 LGA: 92

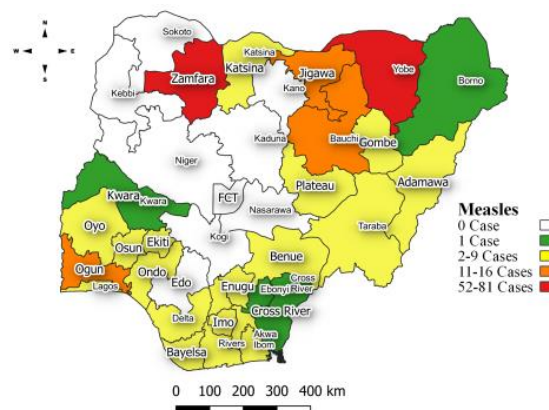
**Table 11: Measles Year to date (Week 1 – 22, 2024/2025)**

Suspected cases		Confirmed cases		Deaths		CFR	
2024	2025	2024	2025	2024	2025	2024	2025
14,851	13,877	1,953	9,039	112	0	0.8%	0.0%

*Figure 10: Trend of suspected and confirmed cases of Measles by epidemiological week, 2025.*



*Figure 11: Suspected cases of Measles by State, Nigeria, week 22, 2025.*



### Key points

- There were 255 suspected cases of Measles reported from 92 LGAs in 29 states. There were 169 laboratory confirmed cases and no death was recorded.

### Actions

#### To date:

- National Measles Multi-Sectoral Technical Working Group (TWG) is closely monitoring measles surveillance data and providing feedback to relevant agencies and development partners.
- Harmonisation of laboratory results from across the laboratories.
- Weekly feedback of key performance indicators to measles laboratories.
- Providing offsite/onsite support to states and follow up for daily reporting and progress with response activities.

## Mpox

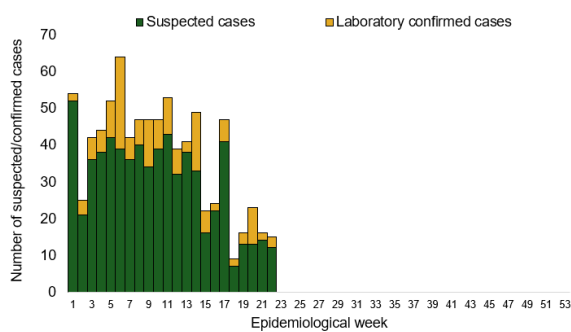
**Table 12: Week 22**

Suspected cases	Confirmed cases	Deaths	Number of States and LGAs affected
15	3	0	State: 7 LGA: 10

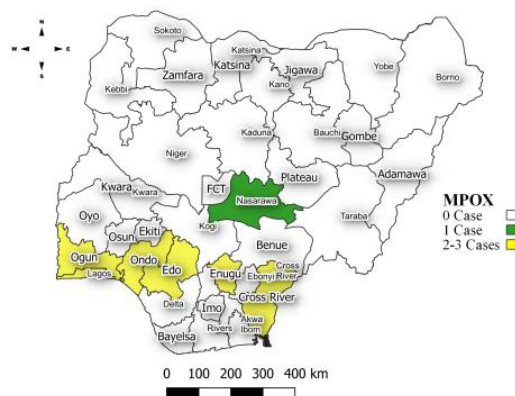
**Table 13: Year to date (Week 1 – 22, 2024/2025)**

Suspected cases		Confirmed cases		Deaths		CFR	
2024	2025	2024	2025	2024	2025	2024	2025
573	819	27	158	0	3	0%	0.4%

*Figure 12: Trend of suspected and confirmed cases of Mpox by epidemiological week, 2025.*



*Figure 13: Suspected cases of Mpox by State, Nigeria, week 22, 2025.*



### Key points

- There were 15 suspected cases of Mpox reported from 10 LGAs in seven states. There were three laboratory confirmed cases and no death was recorded.

### Actions

#### To date:

- National Monkeypox Technical Working Group (TWG) is monitoring activities in all states.
- Weekly EOC meetings.
- Provision of off-site surveillance support to affected States.
- Harmonisation of surveillance and laboratory data from across states and laboratories.

## Acute Flaccid Paralysis (AFP)

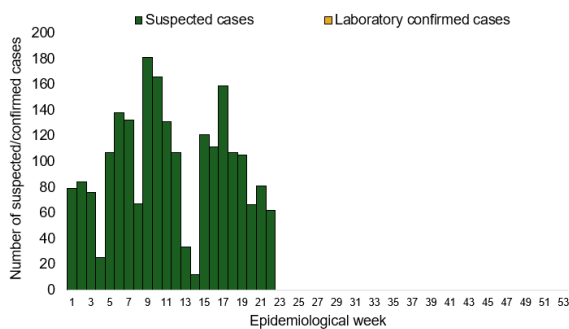
**Table 14: Week 22**

Suspected cases	Confirmed cases	Deaths	Number of States and LGAs affected
62	0	0	State: 22 + FCT LGA: 62

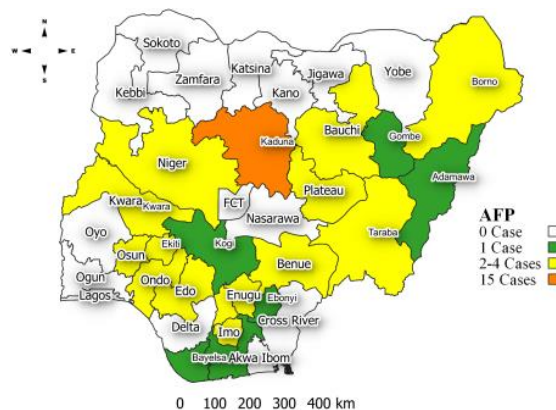
**Table 15: AFP Year to date (Week 1 – 22, 2024/2025)**

Suspected cases		Confirmed cases		Deaths		CFR	
2024	2025	2024	2025	2024	2025	2024	2025
3,267	2,402	0	0	0	0	0%	0%

*Figure 14: Trend of suspected and confirmed cases of AFP by epidemiological week, 2025.*



*Figure 15: Suspected cases of AFP by State, Nigeria, week 22, 2025.*



### Key points

- There were 62 suspected cases of AFP reported from 22 LGAs in 22 states. There was no laboratory confirmed case and no death was recorded.

## COVID-19

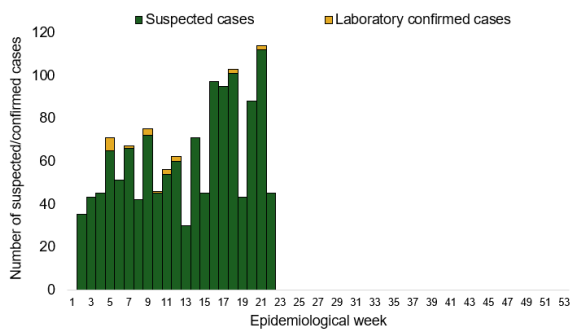
**Table 16: Week 22**

Suspected cases	Confirmed cases	Deaths	Number of States and LGAs affected
45	0	0	State: 4 + FCT LGA: 20

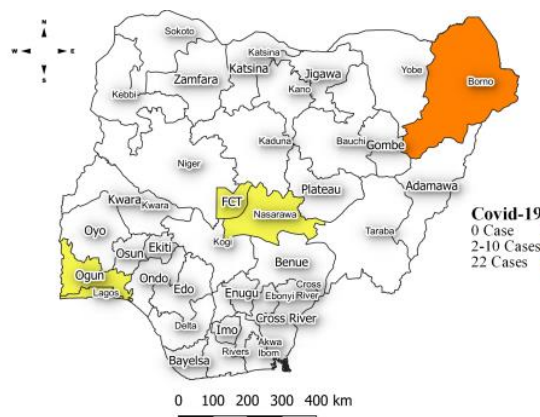
**Table 17: COVID-19 Year to date (Week 1- 22, 2024/2025)**

Suspected cases		Confirmed cases		Deaths		CFR	
2024	2025	2024	2025	2024	2025	2024	2025
795	1,386	795	24	1	0	0.1%	0%

*Figure 16: Trend of suspected and confirmed cases of COVID-19 by epidemiological week, 2025.*



*Figure 17: Suspected cases of COVID-19 by State, Nigeria, week 22, 2025.*



### Key points

- There were 45 suspected cases of COVID-19 reported from 20 LGAs in four states and FCT. There was no laboratory confirmed case and no death was recorded.

### Actions

#### To date:

- National COVID-19 Technical Working Group (TWG) is monitoring activities in all states.
- Harmonisation of surveillance and laboratory data from across states and laboratories.
- Provision of off-site surveillance support to affected States.

## Diphtheria

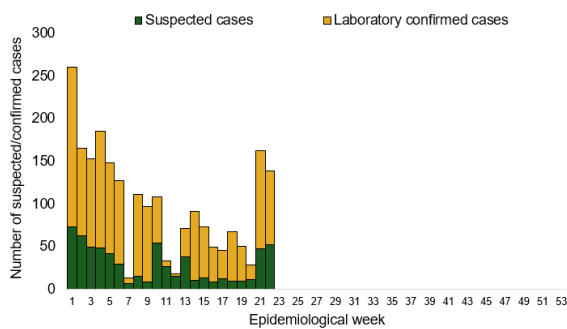
**Table 18: Week 22**

Suspected cases	Confirmed cases	Deaths	Number of States and LGAs affected
138	86	3	State: 3 LGA: 7

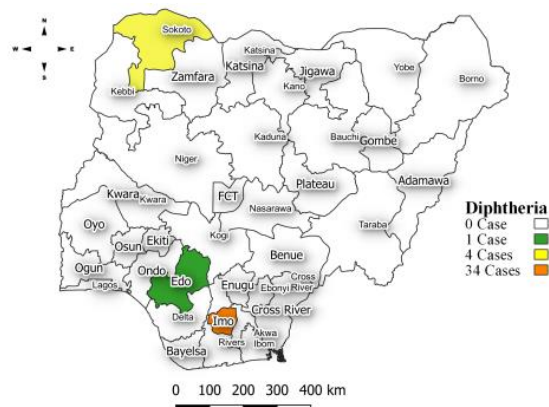
**Table 19: Diphtheria Year to date (week 1 – 22, 2024/2025)**

Suspected cases		Confirmed cases		Deaths		CFR	
2024	2025	2024	2025	2024	2025	2024	2025
10,128	3,679	6,613	2,447	166	138	1.6%	3.8%

*Figure 18: Trend of suspected and confirmed cases of Diphtheria by epidemiological week, 2025.*



*Figure 19: Suspected cases of Diphtheria by State, Nigeria, week 22, 2025.*



### Key points

- There were 138 suspected cases of Diphtheria reported from seven LGAs in three states. There were 86 confirmed cases and three deaths were recorded.

### Actions

#### To date:

- National Diphtheria Technical Working Group (TWG) is monitoring activities in all states.
- Provide technical and off-site support to states on case identification, reporting, and response, especially to non-reporting and low-burden states.
- Data harmonization with laboratory and case management pillars.
- Weekly EOC meeting.

## National Influenza Sentinel Surveillance

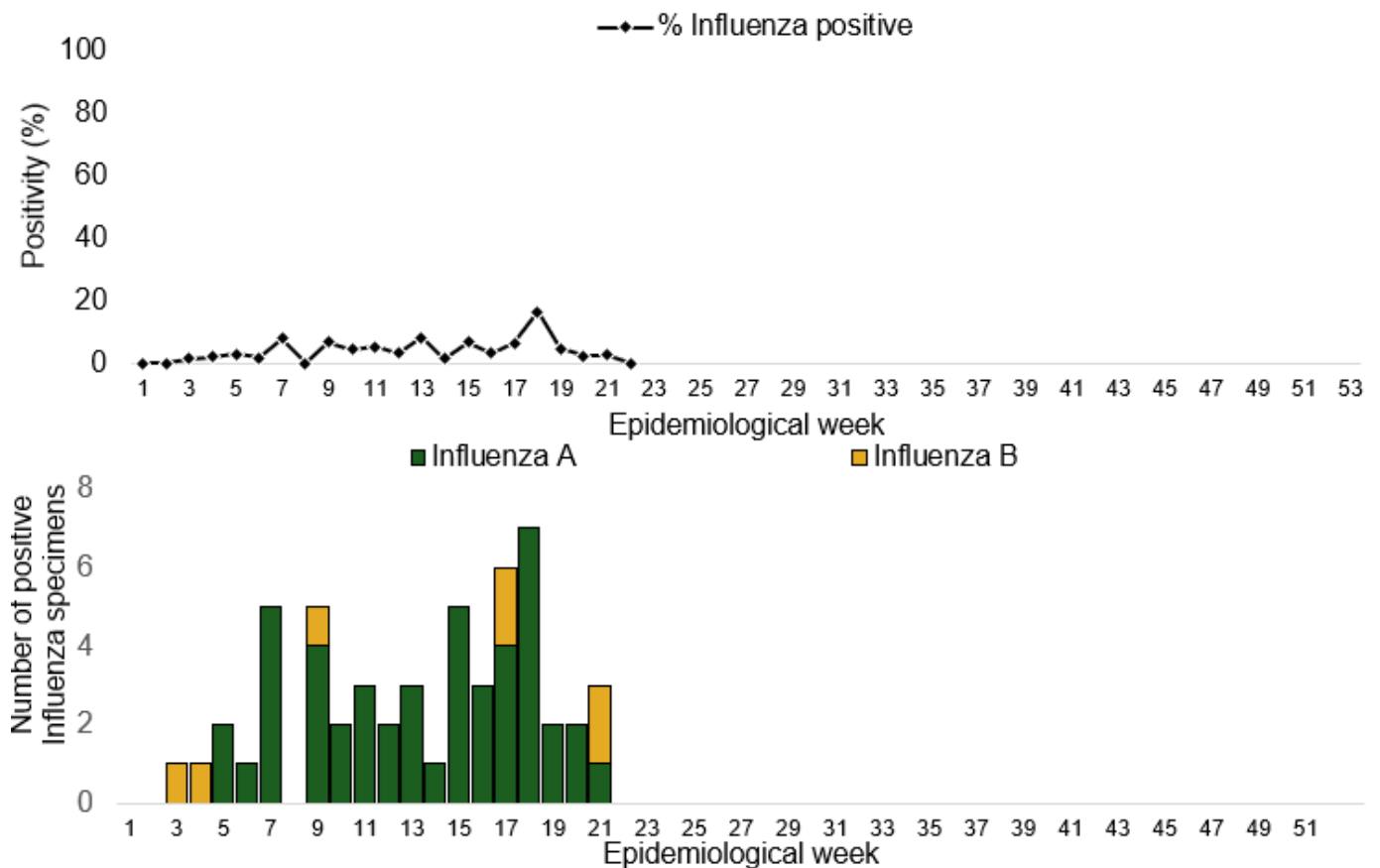
**Table 20: Week 22**

Suspected cases	Confirmed Cases	Confirmed Case by type	
		Influenza A	Influenza B
53	0	0	0

**Table 21: Year to date (week 1 – 22)**

Suspected cases	Total Confirmed Cases	Confirmed Case by type	
		Influenza A	Influenza B
1,490	79	71	8

*Figure 20: Number of influenza positive specimens by type and percentage positive by epidemiological week, 2025.*



## Event Based Surveillance (EBS)

### Week 22

#### Key points

##### Epi Week 22

- 136 calls were successfully routed to agents and answered.
- Over 2,500 articles scanned through Epidemic Intelligence from Open Sources (EIOS) and other manual sources.
- From the calls, EIOS, and other manual sources, three signals were picked.

##### Cumulatively, from week 1 - 22

- 2,592 calls were successfully routed to agents and answered.
- 36 Signals were picked and escalated.

Figure 22: Number of signals/events per week, 2025.

