

# Weekly Epidemiological Report

Week 45: 3<sup>rd</sup> – 9<sup>th</sup> November, 2025

## Highlight of the week

### ***STRENGTHENING POLICY DRIVEN DISEASE MODELLING IN NIGERIA***



The Nigeria Stakeholders Meeting for the SACEMA Policy Modelling Programme (Polio and Measles) was held to disseminate findings from the modelling projects and share key policy recommendations.

NCDC staff members participated in the 10-month programme alongside fellows from across Africa. Hosted by the South African Centre for Epidemiological Modelling and Analysis (SACEMA), Stellenbosch University, the initiative builds the capacity of African scientists in policy driven disease modelling to improve vaccination coverage and disease outcomes.

Through this programme, NCDC continues to strengthen technical capacity for data-driven public health decision-making and enhanced outbreak preparedness and response.

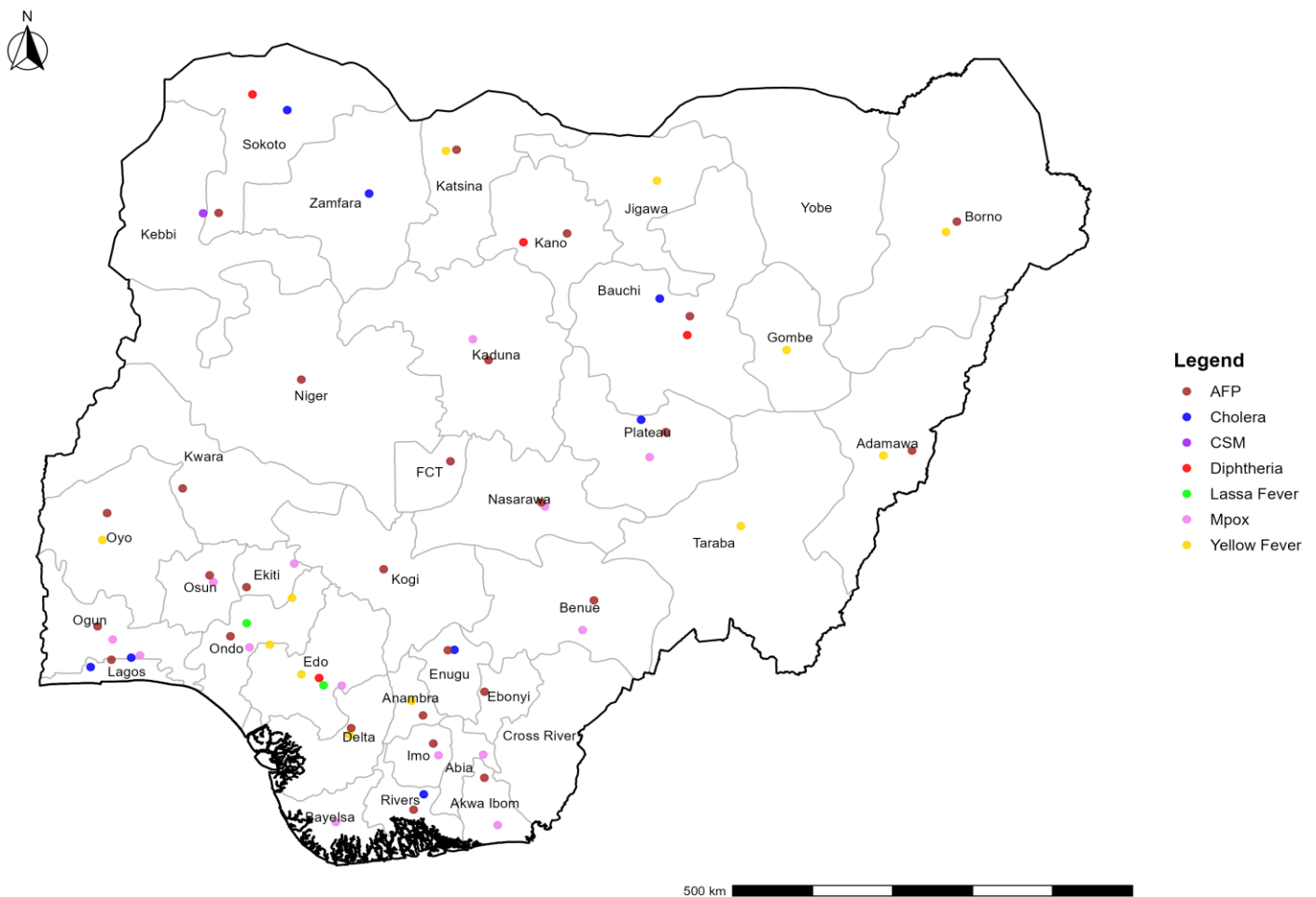
## Summary of Incidents

**Ongoing Incidents**  
**3**

The Ongoing incidents within the reporting week are Cholera, Mpox and Diphtheria.

*\*Ongoing incidents are defined as confirmed cases where a national EOC or equivalent has been activated.*

Figure 1: Priority Diseases under surveillance in Nigeria, Week 45, 2025



## Summary of Diseases

**Table 1: Week 45 (3<sup>rd</sup> – 9<sup>th</sup> November, 2025)**

<b>Lassa Fever<sub>1</sub></b>	<b>Cerebrospinal Meningitis (CSM)<sub>2</sub></b>	<b>Yellow Fever<sub>2</sub></b>
84 Suspected case(s)	1 Suspected case(s)	15 Suspected case(s)
10 Confirmed case(s)	0 Confirmed case(s)	0 Confirmed case(s)
1 Death(s)	0 Death(s)	0 Death(s)
<b>Cholera<sub>2</sub></b>	<b>Measles<sub>2</sub></b>	<b>Mpox<sub>2</sub></b>
39 Suspected case(s)	0 Suspected case(s)	48 Suspected case(s)
0 Confirmed case(s)	0 Confirmed case(s)	18 Confirmed case(s)
0 Death(s)	0 Death(s)	0 Death(s)
<b>Acute Flaccid Paralysis (AFP)<sub>2</sub></b>	<b>COVID-19<sub>2</sub></b>	<b>Diphtheria<sub>2</sub></b>
111 Suspected case(s)	0 Suspected case(s)	145 Suspected case(s)
0 Confirmed case(s)	0 Confirmed case(s)	118 Confirmed case(s)
1 Death(s)	0 Death(s)	1 Death(s)
<b>National Sentinel influenza surveillance<sub>3</sub></b>		
0 Suspected case(s)		
0 Confirmed case(s)		

Information for all the diseases was retrieved from the Technical Working Group and Situation Reports of the Nigerian Centre for Disease Control and Prevention.

1. Case Fatality Rate (CFR) for this disease is reported for confirmed cases only.
2. CFR for this disease is reported for total cases i.e., suspected + confirmed.

Information for sentinel influenza was retrieved from the laboratory.

**Lassa Fever**

**Table 2: Week 45**

Suspected cases	Confirmed cases	Deaths	Number of States and LGAs affected
84	10	1	State: 2 LGA: 16

**Table 3: Lassa Fever Year to date (Week 1 – 45, 2024/2025)**

Year	Suspected cases	Confirmed cases	Deaths	CFR (%)
2024	8,957	1,069	176	16.5%
2025	8,556	976	178	18.2%

Figure 2: Trend of suspected and confirmed cases of Lassa Fever by epidemiological, Week 45, 2025

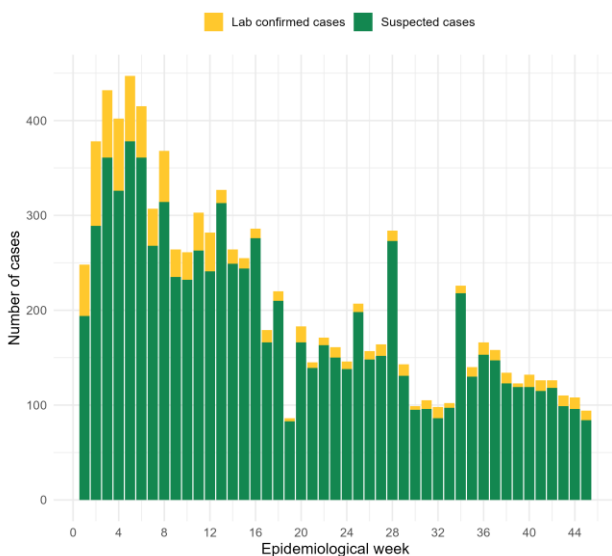


Figure 3: Confirmed cases of Lassa Fever by State, Nigeria, Week 45, 2025



**Key Point**

- There were 84 suspected cases of Lassa Fever reported from 16 LGAs in two states.
- There were 10 laboratory confirmed cases and one death was recorded.

**Actions**

- National Lassa fever multi-partner, multi-sectoral Technical Working Group (TWG) continues to coordinate the preparedness and response activities at all levels.
- Providing offsite/onsite support to states.

## Cerebrospinal Meningitis (CSM)

**Table 4: Week 45**

Suspected cases	Confirmed cases	Deaths	Number of States and LGAs affected
1	0	0	State: 1 LGA: 1

**Table 5: CSM Year to date (Week 1 – 45, 2024/2025)**

Year	Suspected cases	Confirmed cases	Deaths	CFR (%)
2024	4,840	48	343	7.1%
2025	4,652	82	320	6.9%

Figure 4: Trend of suspected and confirmed cases of CSM by epidemiological, Week 45, 2025

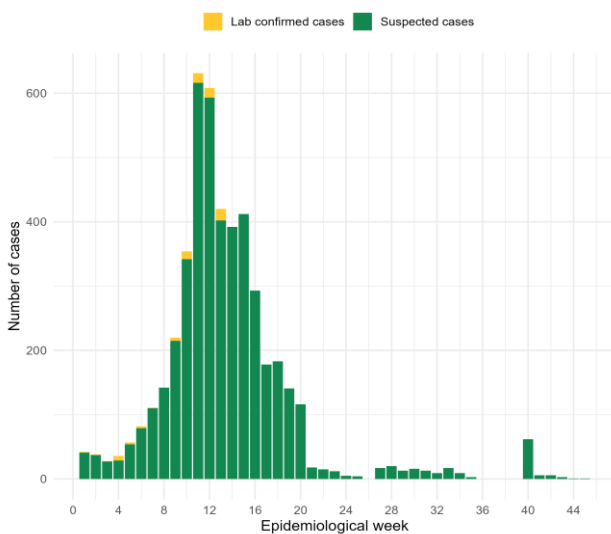


Figure 5: Suspected cases of CSM by State, Nigeria, Week 45, 2025



### Key Point

- There was one suspected case of Cerebrospinal Meningitis (CSM) reported from one LGA in Kebbi state.
- There was no laboratory confirmed case and no death was recorded.

### Actions

- National CSM multi-partner, multi-sectoral Technical Working Group (TWG) continues to coordinate the preparedness and response activities at all levels.
- Providing offsite/onsite support to states.

**Yellow Fever**

**Table 6: Week 45**

Suspected cases	Confirmed cases	Deaths	Number of States and LGAs affected
15	0	0	State: 12 LGA: 14

**Table 7: Yellow Fever Year to date (Week 1 – 45, 2024/2025)**

Year	Suspected cases	Confirmed cases	Deaths	CFR (%)
2024	2,680	22	2	0.1%
2025	2,292	19	6	0.3%

Figure 6: Trend of suspected and confirmed cases of Yellow Fever by epidemiological week, Week 45, 2025

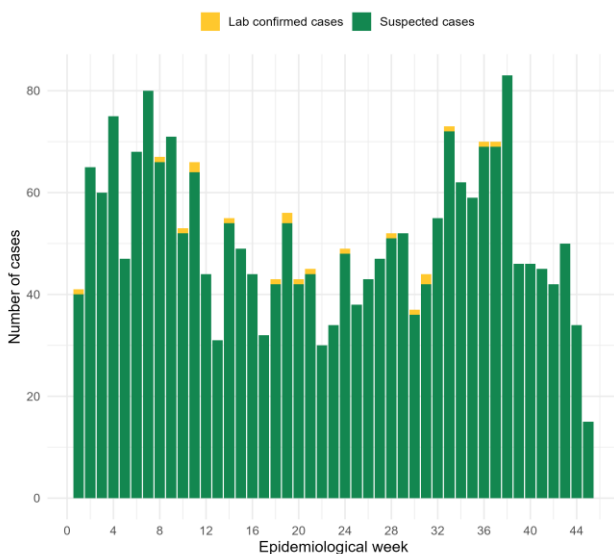


Figure 7: Suspected cases of Yellow Fever by State, Nigeria, Week 45, 2025



**Key Points**

- There were 15 suspected cases of Yellow Fever (YF) reported from 14 LGAs in 12 states.
- There was no laboratory confirmed case and no death was recorded.

**Actions**

- National YF multi-partner Technical Working Group (TWG) continues to coordinate activities across states.
- Coordination of YF sample management and transportation from all states to the regional reference laboratories
- Providing offsite/onsite support to states.

**Cholera**

**Table 8: Week 45**

Suspected cases	Confirmed cases	Deaths	Number of States and LGAs affected
39	0	0	State: 8 LGA: 9

**Table 9: Cholera Year to date (Week 1 – 45, 2024/2025)**

Year	Suspected cases	Confirmed cases	Deaths	CFR (%)
2024	22,917	407	698	3%
2025	20,946	132	465	2.2%

Figure 8: Trend of suspected and confirmed cases of Cholera by epidemiological, Week 45, 2025

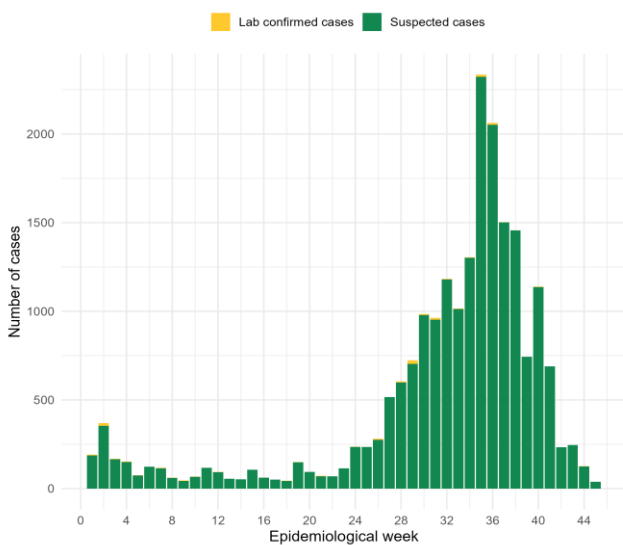
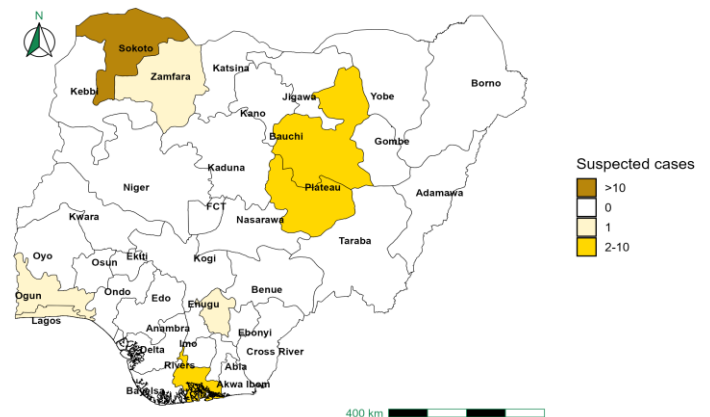


Figure 9: Trend of suspected and confirmed cases of Cholera, Week 45, 2025



**Key Point**

- There were 39 suspected cases of Cholera reported from nine LGAs in eight states.
- There was no laboratory confirmed case and no death was recorded.

**Actions**

- National Cholera multi-partner, multi-sectoral Technical Working Group (TWG) continues to coordinate the preparedness and response activities at all levels.
- Biweekly EOC Meetings.
- Providing offsite/onsite support to states.

**Measles**

**Table 10: Week 45**

Suspected cases	Confirmed cases	Deaths	Number of States and LGAs affected
0	0	0	State: 0 LGA: 0

**Table 11: Measles Year to date (Week 1 – 45, 2024/2025)**

Year	Suspected cases	Confirmed cases	Deaths	CFR (%)
2024	19,404	9,754	123	0.6%
2025	26,310	19,165	153	0.6%

Figure 10: Trend of suspected and confirmed cases of Measles by epidemiological, Week 45, 2025

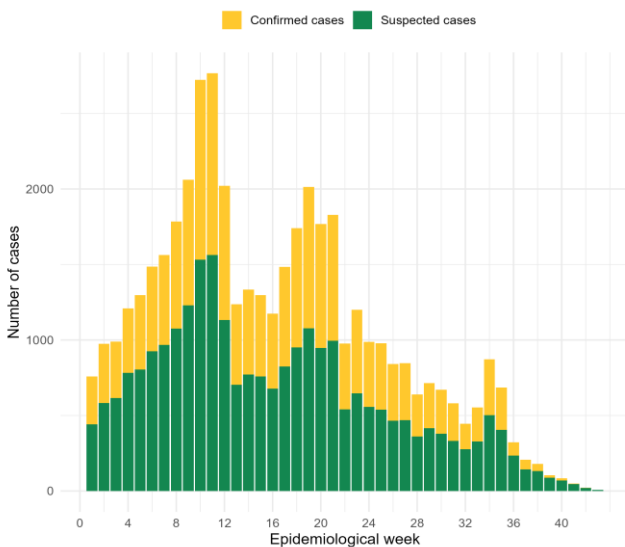


Figure 11: Suspected cases of Measles by State, Nigeria, Week 45, 2025



**Key Point**

- There was no case of Measles reported for the week.

**Actions**

- National Measles Technical Working Group (TWG) is monitoring activities in all states.
- Provision of off-site surveillance support to affected States.
- Harmonisation of surveillance and laboratory data from across states and laboratories.

**Mpox**

**Table 12: Week 45**

Suspected cases	Confirmed cases	Deaths	Number of States and LGAs affected
48	18	0	State: 8 LGA: 24

**Table 13: Mpox Year to date (Week 1 – 45, 2024/2025)**

Year	Suspected cases	Confirmed cases	Deaths	CFR (%)
2024	1,547	139	0	0%
2025	1,552	402	4	0.3%

Figure 12: Trend of suspected and confirmed cases of Mpox by epidemiological, Week 45, 2025

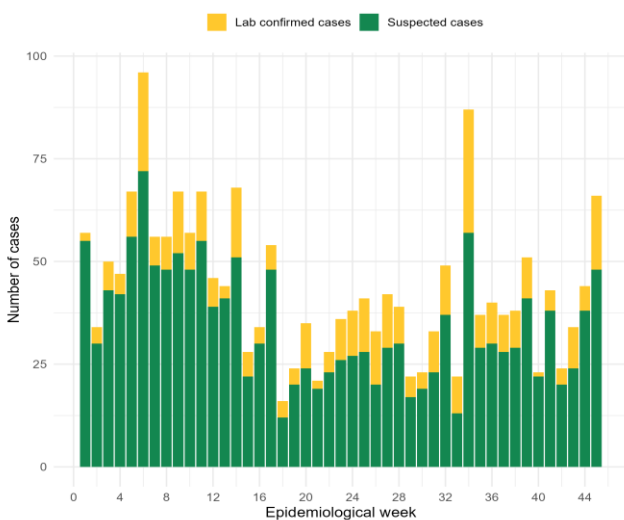
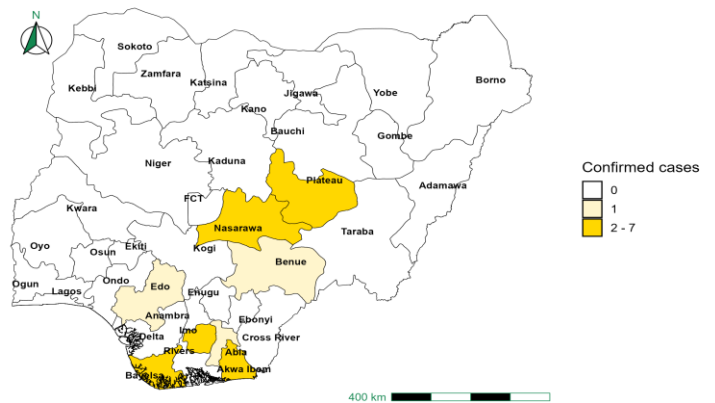


Figure 13: Suspected cases of Mpox by State, Nigeria, Week 45, 2025



**Key Point**

- There were 48 suspected cases of Mpox reported from 24 LGAs in eight states.
- There were 18 laboratory confirmed cases and no death was recorded.

**Actions**

- National Monkeypox Technical Working Group (TWG) is monitoring activities in all states.
- Weekly EOC meetings.
- Provision of off-site surveillance support to affected States.
- Harmonisation of surveillance and laboratory data from across states and laboratories.

## Acute Flaccid Paralysis (AFP)

**Table 14: Week 45**

Suspected cases	Confirmed cases	Deaths	Number of States and LGAs affected
111	0	1	State: 26 + FCT LGA: 76

**Table 15: AFP Year to date (Week 1 – 45, 2024/2025)**

Year	Suspected cases	Confirmed cases	Deaths	CFR (%)
2024	6,915	25	28	0.4%
2025	7,919	28	15	0.2%

Figure 14: Trend of suspected and confirmed cases of AFP by epidemiological, Week 45, 2025

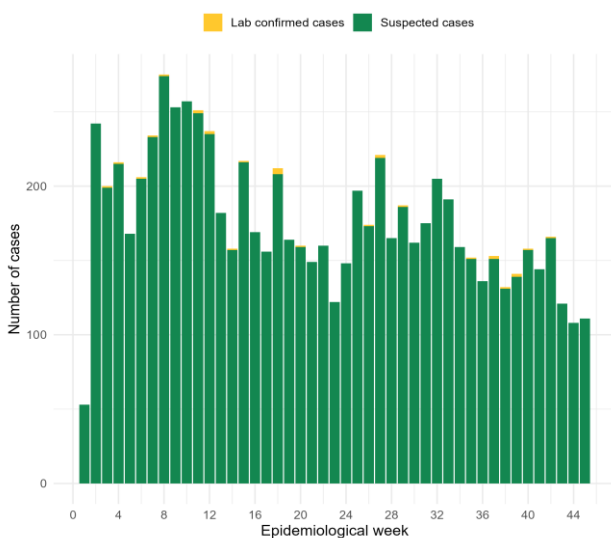
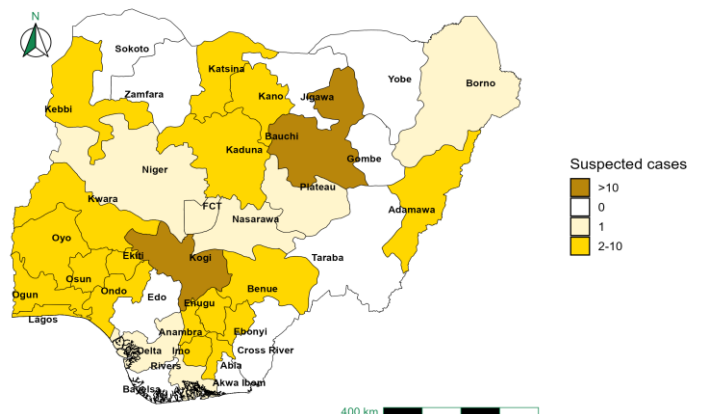


Figure 15: Suspected cases of AFP by State, Nigeria, Week 45, 2025



### Key Point

- There were 111 suspected cases of AFP reported from 76 LGAs in 26 states and FCT.
- There was no laboratory confirmed case and no death was recorded.

**Coronavirus Disease (COVID-19)**

**Table 16: Week 45**

Suspected cases	Confirmed cases	Deaths	Number of States and LGAs affected
0	0	0	State: 0 LGA: 0

**Table 17: COVID-19 Year to date (Week 1 – 45, 2024/2025)**

Year	Suspected cases	Confirmed cases	Deaths	CFR (%)
2024	1,897	805	1	0.1%
2025	3,454	59	0	0%

Figure 16: Trend of suspected and confirmed cases of Covid 19 by epidemiological, Week 45, 2025

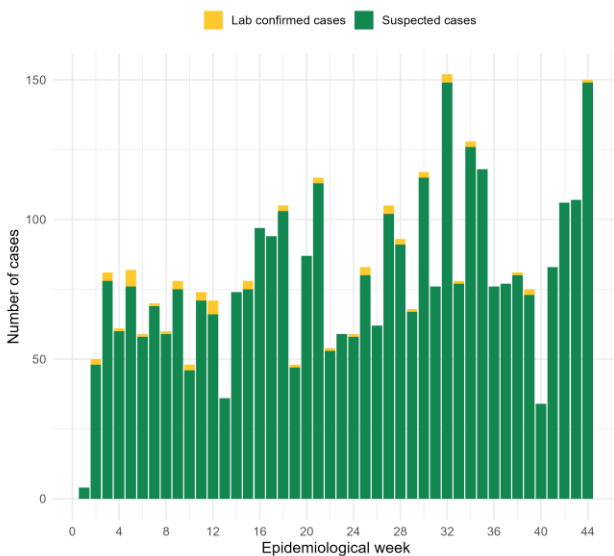


Figure 17: Suspected cases of Covid 19 by State, Nigeria, Week 45, 2025



**Key Point**

- There was no case of COVID-19 reported for the week.

**Actions**

- National COVID-19 Technical Working Group (TWG) is monitoring activities in all states
- Harmonisation of surveillance and laboratory data from across states and laboratories
- Provision of off-site surveillance support to affected States

## Diphtheria

**Table 18: Week 45**

Suspected cases	Confirmed cases	Deaths	Number of States and LGAs affected
145	118	1	State: 4 LGA: 12

**Table 19: Diphtheria Year to date (Week 1 – 45, 2024/2025)**

Year	Suspected cases	Confirmed cases	Deaths	CFR (%)
2024	16,992	10,471	756	4.4%
2025	13,615	9,489	967	7.1%

Figure 18: Trend of suspected and confirmed cases of Diphtheria by epidemiological, Week 45, 2025

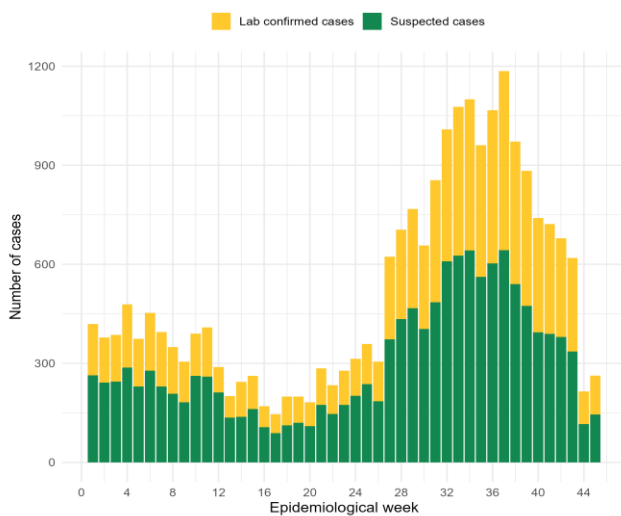
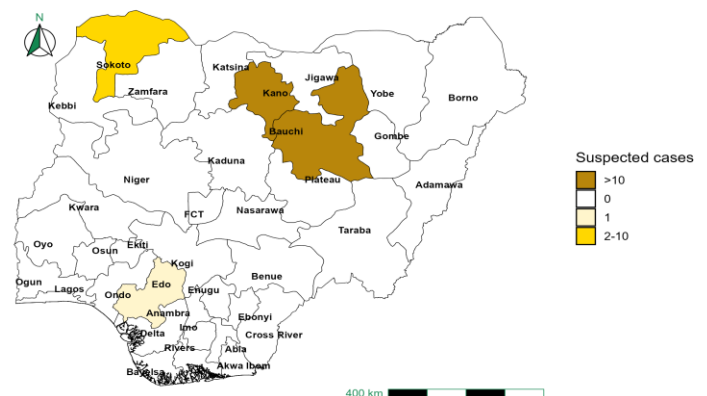


Figure 19: Suspected cases of Diphtheria by State, Nigeria, Week 45, 2025



### Key Point

- There were 145 suspected cases of Diphtheria reported from 12 LGAs in four states. There were 118 confirmed cases and one death was recorded.

### Actions

- National Diphtheria Technical Working Group (TWG) is monitoring activities in all states.
- Weekly EOC meeting.
- Provide technical and off-site support to states on case identification, reporting, and response, especially to non-reporting and low-burden states.

**National Influenza Sentinel Surveillance**

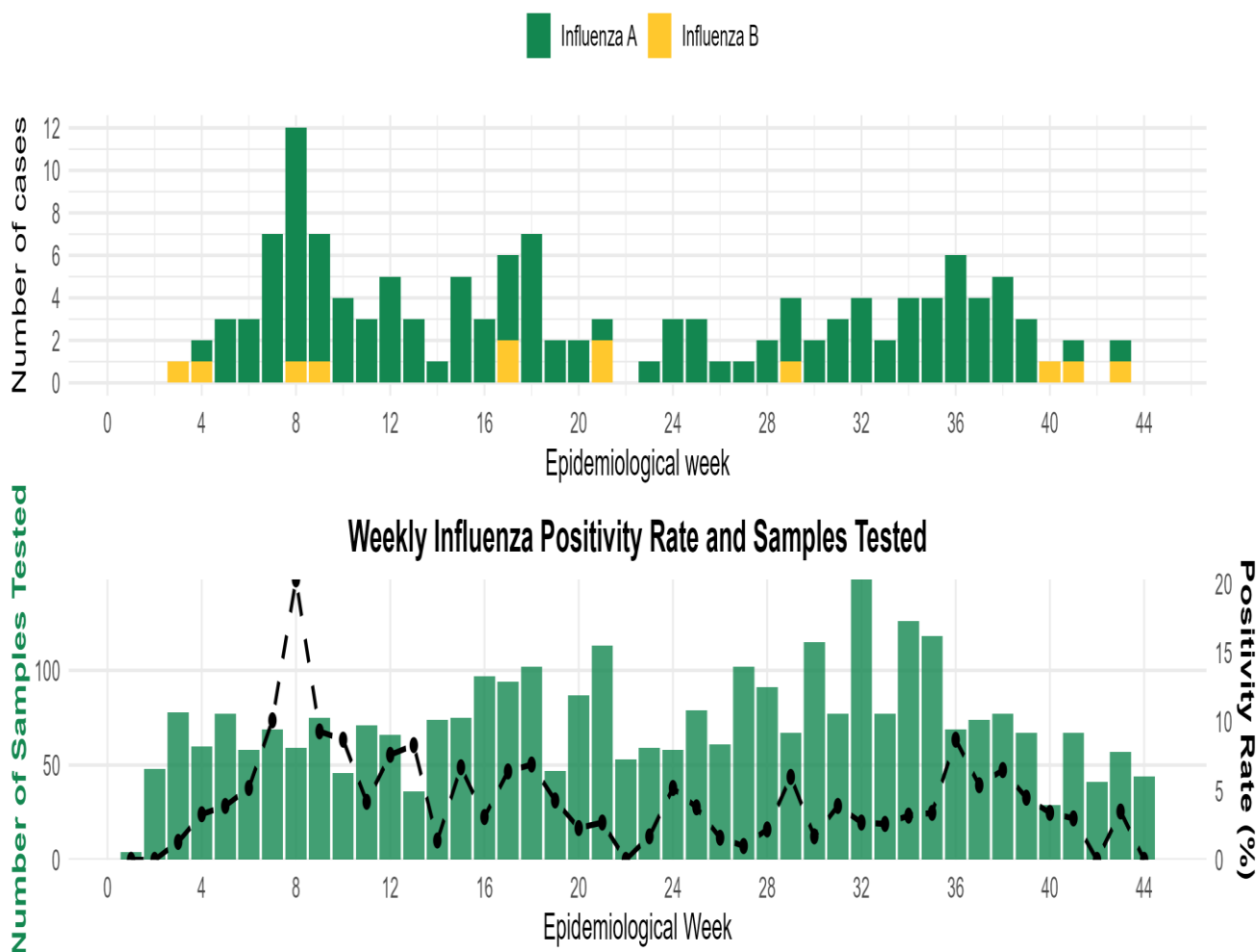
**Table 20: Week 45**

Suspected cases	Confirmed cases	Confirmed Case by type	
		Influenza A	Influenza B
0	0	0	0

**Table 21: Year to date (Week 1 – 45, 2024/2025)**

Suspected cases	Confirmed cases	Confirmed Case by type	
		Influenza A	Influenza B
3,456	136	124	12

*Figure 20: Number of influenza positive specimens by type and percentage positive by epidemiological week, 2025*



## Event-based Surveillance (EBS)

### Week 45

#### Key Point

##### Epi Week 45

- 99 Calls were successfully routed to agents and answered
- Over 100 articles scanned through Epidemic Intelligence from Open Sources (EIOS) and other manual sources.
- From the calls, EIOS, and other manual sources, three signals were picked.

##### Cumulatively, 1 - 45

- 6,502 calls were successfully routed to agents and answered
- 71 Signals were picked and escalated

Figure 21: Number of signals/events per week, 2025.

