

## Weekly Epidemiological Report

Week 44: 27<sup>th</sup> October – 2<sup>nd</sup> November, 2025

### Highlight of the week

#### ***NATIONAL WORKSHOP ON INFODEMIC MANAGEMENT AND ROADMAP DEVELOPMENT***



The Nigeria Centre for Disease Control and Prevention (NCDC), in collaboration with WHO Nigeria, held a two-day workshop to assess the country's infodemic management performance and develop a one-year national roadmap for improvement.

The workshop leveraged findings from the Joint External Evaluation (JEE) to strengthen infodemic management capacities, align efforts with JEE standards, and enhance Risk Communication and Community Engagement (RCCE) performance in future evaluations.

Key stakeholders from relevant ministries, departments, and agencies (MDAs), alongside members of the Nigeria Infodemic Management Team, participated to foster collaboration and coordinated action against misinformation and health threats.

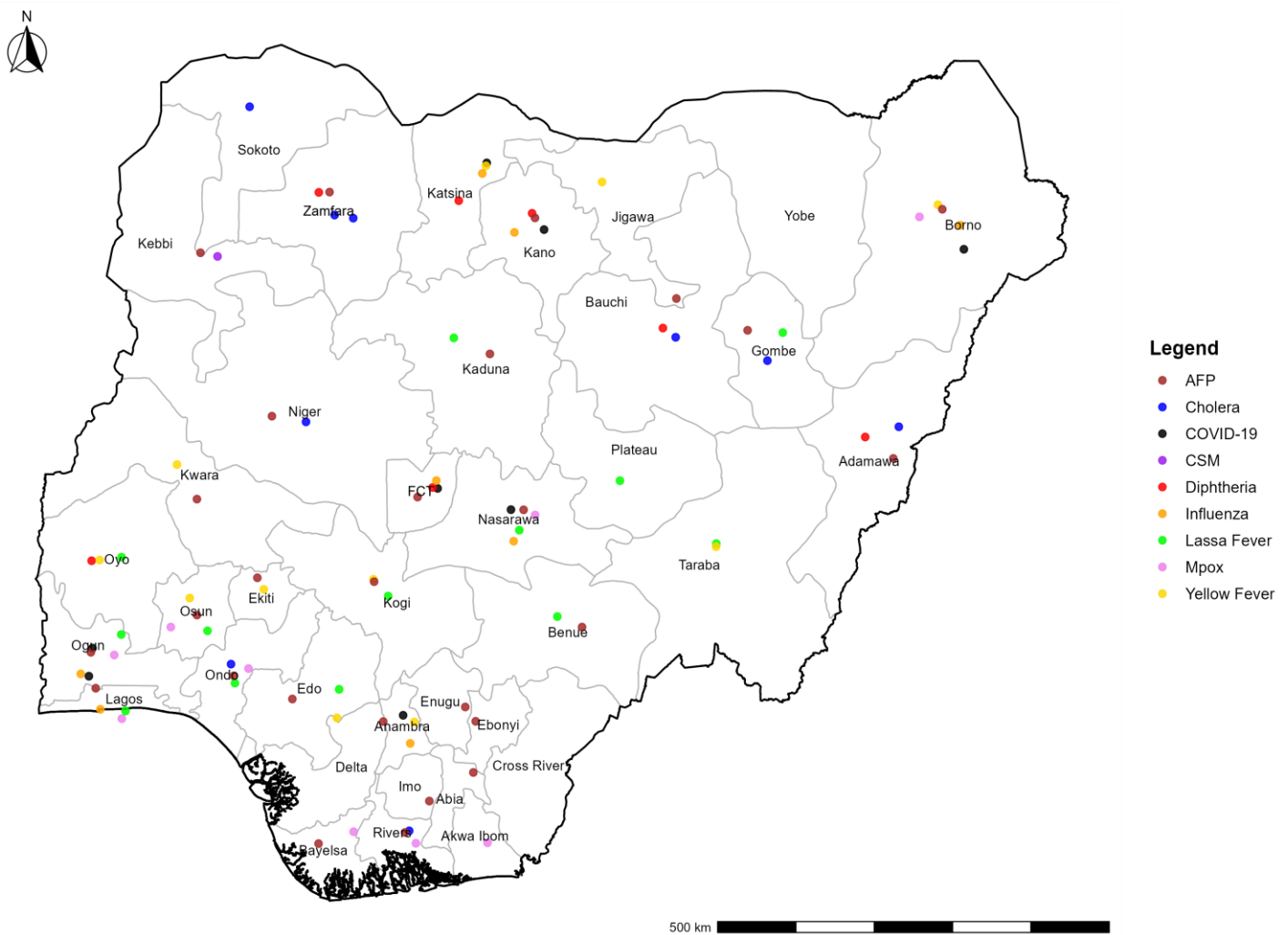
## Summary of Incidents

**Ongoing Incidents**  
**3**

The Ongoing incidents within the reporting week are Cholera, Mpox and Diphtheria.

*\*Ongoing incidents are defined as confirmed cases where a national EOC or equivalent has been activated.*

*Figure 1: Priority Diseases under surveillance in Nigeria, Week 44, 2025*



## Summary of Diseases

**Table 1: Week 44 (27<sup>th</sup> October – 2<sup>nd</sup> November, 2025)**

<b>Lassa Fever<sub>1</sub></b>	<b>Cerebrospinal Meningitis (CSM)<sub>2</sub></b>	<b>Yellow Fever<sub>2</sub></b>
96 Suspected case(s)	1 Suspected case(s)	34 Suspected case(s)
12 Confirmed case(s)	0 Confirmed case(s)	0 Confirmed case(s)
1 Death(s)	0 Death(s)	0 Death(s)
<b>Cholera<sub>2</sub></b>	<b>Measles<sub>2</sub></b>	<b>Mpox<sub>2</sub></b>
125 Suspected case(s)	0 Suspected case(s)	38 Suspected case(s)
2 Confirmed case(s)	0 Confirmed case(s)	6 Confirmed case(s)
8 Death(s)	0 Death(s)	0 Death(s)
<b>Acute Flaccid Paralysis (AFP)<sub>2</sub></b>	<b>COVID-19<sub>2</sub></b>	<b>Diphtheria<sub>2</sub></b>
108 Suspected case(s)	149 Suspected case(s)	116 Suspected case(s)
0 Confirmed case(s)	1 Confirmed case(s)	99 Confirmed case(s)
0 Death(s)	0 Death(s)	4 Death(s)
<b>National Sentinel influenza surveillance<sub>3</sub></b>		
149 Suspected case(s)		
0 Confirmed case(s)		

Information for all the diseases was retrieved from the Technical Working Group and Situation Reports of the Nigerian Centre for Disease Control and Prevention.

1. Case Fatality Rate (CFR) for this disease is reported for confirmed cases only.
2. CFR for this disease is reported for total cases i.e., suspected + confirmed.
3. Information for sentinel influenza was retrieved from the laboratory.

**Lassa Fever**

**Table 2: Week 44**

Suspected cases	Confirmed cases	Deaths	Number of States and LGAs affected
96	12	1	State: 13 LGA: 30

**Table 3: Lassa Fever Year to date (Week 1 – 44, 2024/2025)**

Year	Suspected cases	Confirmed cases	Deaths	CFR (%)
2024	8,848	1,059	176	16.6%
2025	8,472	966	177	18.3%

Figure 2: Trend of suspected and confirmed cases of Lassa Fever by epidemiological, Week 44, 2025

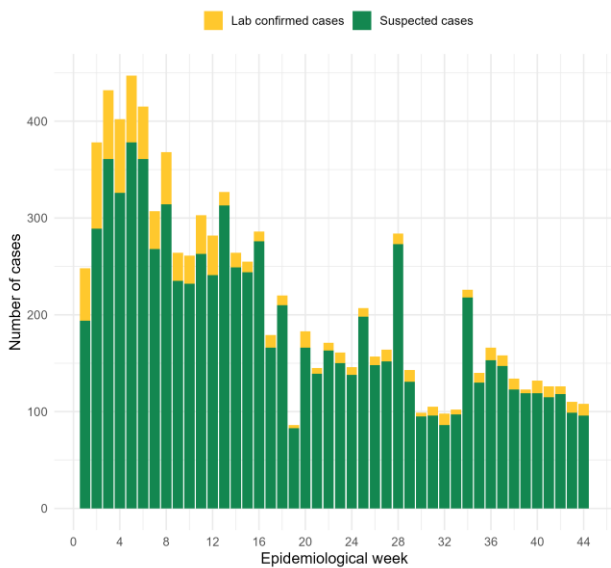
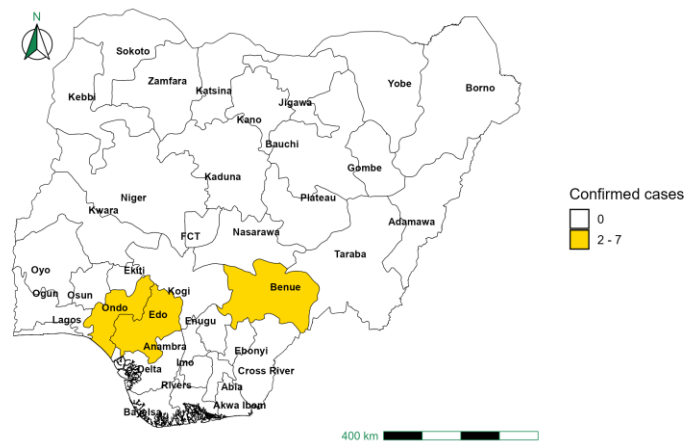


Figure 3: Confirmed cases of Lassa Fever by State, Nigeria, Week 44, 2025



**Key Point**

- There were 96 suspected cases of Lassa Fever reported from 30 LGAs in 13 states.
- There were 12 laboratory confirmed cases and one death was recorded.

**Actions**

- National Lassa fever multi-partner, multi-sectoral Technical Working Group (TWG) continues to coordinate the preparedness and response activities at all levels.
- Providing offsite/onsite support to states.

## Cerebrospinal Meningitis (CSM)

**Table 4: Week 44**

Suspected cases	Confirmed cases	Deaths	Number of States and LGAs affected
1	0	0	State: 1 LGA: 1

**Table 5: CSM Year to date (Week 1 – 44, 2024/2025)**

Year	Suspected cases	Confirmed cases	Deaths	CFR (%)
2024	4,831	48	343	7.1%
2025	4,651	82	320	6.9%

Figure 4: Trend of suspected and confirmed cases of CSM by epidemiological, Week 44, 2025

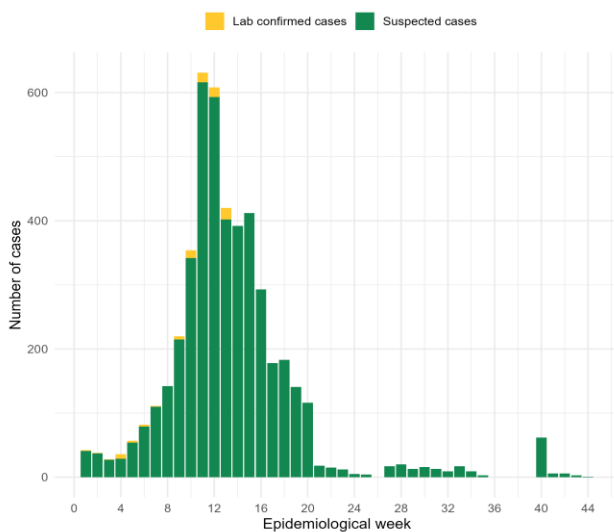


Figure 5: Suspected cases of CSM by State, Nigeria, Week 44, 2025



### Key Point

- There was one suspected case of Cerebrospinal Meningitis (CSM) reported from one LGA in Kebbi state.
- There was no laboratory confirmed case and no death was recorded.

### Actions

- National CSM multi-partner, multi-sectoral Technical Working Group (TWG) continues to coordinate the preparedness and response activities at all levels.
- Providing offsite/onsite support to states.



**Cholera**

**Table 8: Week 44**

Suspected cases	Confirmed cases	Deaths	Number of States and LGAs affected
125	2	8	State: 8 LGA: 15

**Table 9: Cholera Year to date (Week 1 – 44, 2024/2025)**

Year	Suspected cases	Confirmed cases	Deaths	CFR (%)
2024	21,767	393	677	3.1%
2025	20,907	132	465	2.2%

Figure 8: Trend of suspected and confirmed cases of Cholera by epidemiological, Week 44, 2025

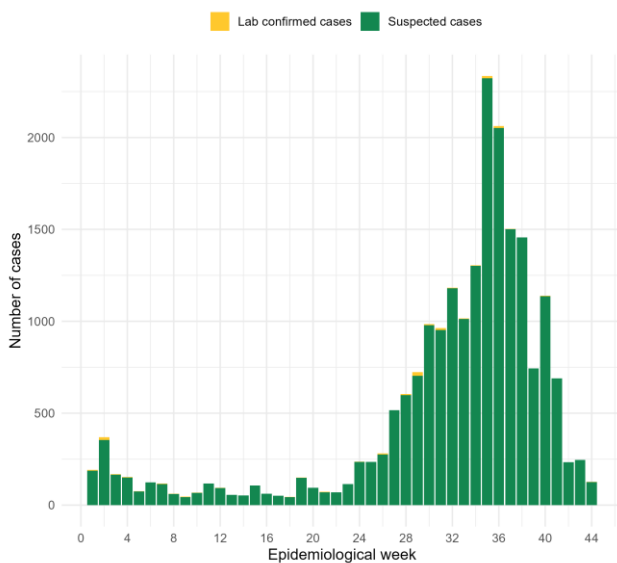
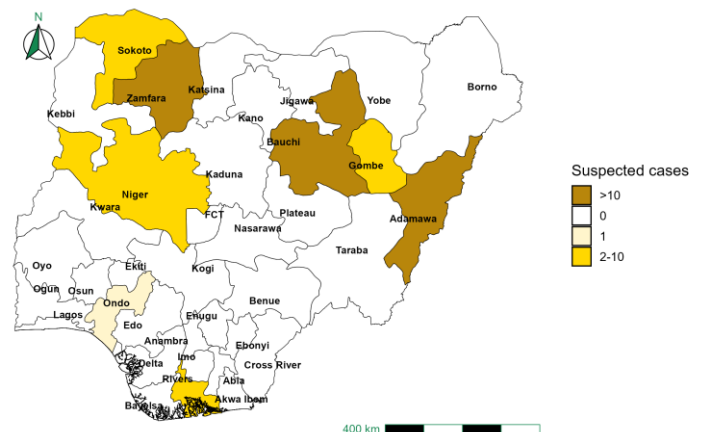


Figure 9: Trend of suspected and confirmed cases of Cholera, Week 44, 2025



**Key Point**

- There were 125 suspected cases of Cholera reported from 15 LGAs in eight states.
- There was two laboratory confirmed cases and eight deaths were recorded.

**Actions**

- National Cholera multi-partner, multi-sectoral Technical Working Group (TWG) continues to coordinate the preparedness and response activities at all levels.
- Biweekly EOC Meetings.
- Providing offsite/onsite support to states.

**Measles**

**Table 10: Week 44**

Suspected cases	Confirmed cases	Deaths	Number of States and LGAs affected
0	0	0	State: 0 LGA: 0

**Table 11: Measles Year to date (Week 1 – 44, 2024/2025)**

Year	Suspected cases	Confirmed cases	Deaths	CFR (%)
2024	19,199	9,742	123	0.6%
2025	26,310	19,165	153	0.6%

Figure 10: Trend of suspected and confirmed cases of Measles by epidemiological, Week 44, 2025

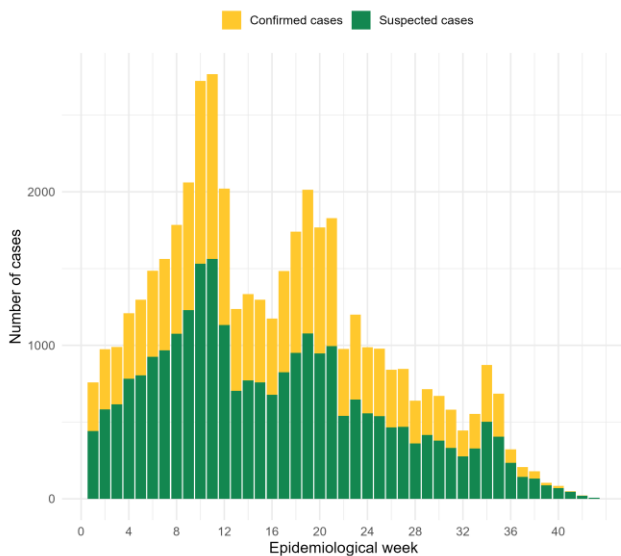


Figure 11: Suspected cases of Measles by State, Nigeria, Week 44, 2025



**Key Point**

- There was no case of Measles reported for the week.

**Actions**

- National Measles Technical Working Group (TWG) is monitoring activities in all states
- Provision of off-site surveillance support to affected States
- Harmonisation of surveillance and laboratory data from across states and laboratories

**Mpox**

**Table 12: Week 44**

Suspected cases	Confirmed cases	Deaths	Number of States and LGAs affected
38	6	0	State: 4 LGA: 21

**Table 13: Mpox Year to date (Week 1 – 44, 2024/2025)**

Year	Suspected cases	Confirmed cases	Deaths	CFR (%)
2024	1,486	125	0	0%
2025	1,504	384	4	0.3%

Figure 12: Trend of suspected and confirmed cases of Mpox by epidemiological, Week 44, 2025

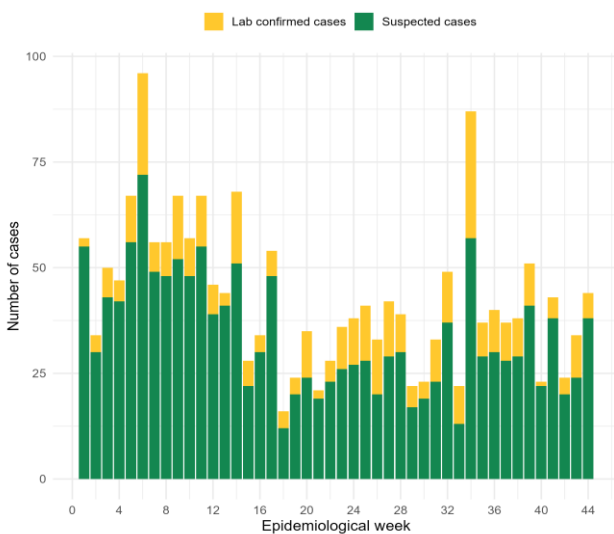
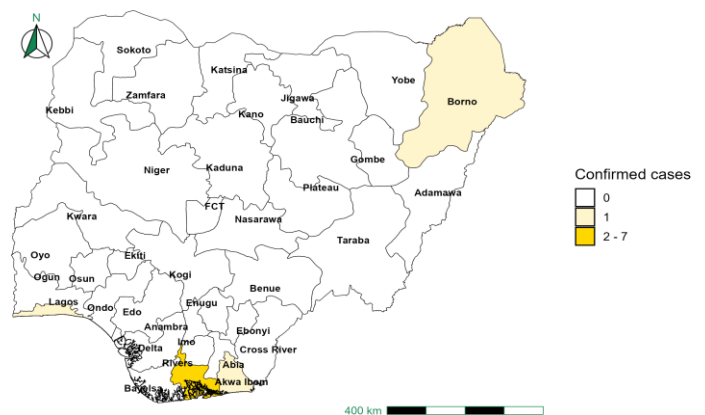


Figure 13: Suspected cases of Mpox by State, Nigeria, Week 44, 2025



**Key Point**

- There were 38 suspected cases of Mpox reported from 21 LGAs in four states.
- There were six laboratory confirmed cases and no death was recorded.

**Actions**

- National Monkeypox Technical Working Group (TWG) is monitoring activities in all states.
- Weekly EOC meetings.
- Provision of off-site surveillance support to affected States.
- Harmonisation of surveillance and laboratory data from across states and laboratories.

## Acute Flaccid Paralysis (AFP)

**Table 14: Week 44**

Suspected cases	Confirmed cases	Deaths	Number of States and LGAs affected
108	0	0	State: 26 + FCT LGA: 70

**Table 15: AFP Year to date (Week 1 – 44, 2024/2025)**

Year	Suspected cases	Confirmed cases	Deaths	CFR (%)
2024	6,913	25	28	0.4%
2025	7,808	28	14	0.2%

Figure 14: Trend of suspected and confirmed cases of AFP by epidemiological, Week 44, 2025

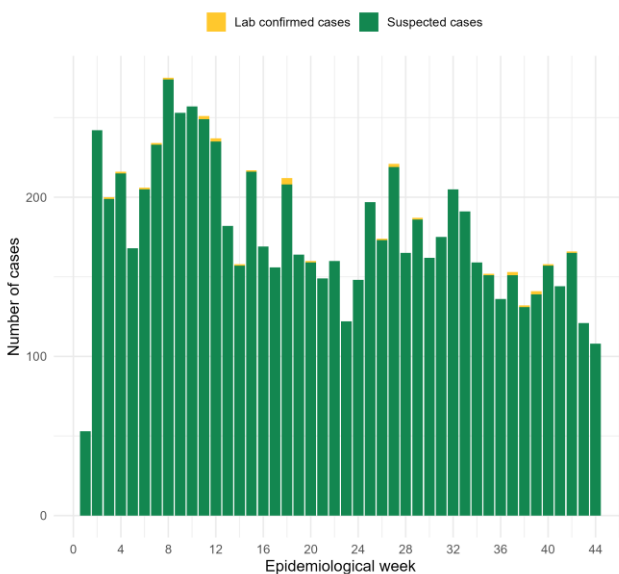
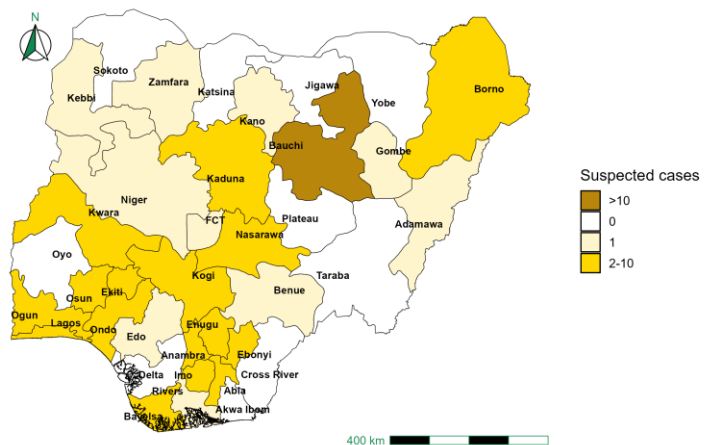


Figure 15: Suspected cases of AFP by State, Nigeria, Week 44, 2025



### Key Point

- There were 108 suspected cases of AFP reported from 70 LGAs in 26 states and FCT.
- There was no laboratory confirmed case and no death was recorded.

## Coronavirus Disease (COVID-19)

**Table 16: Week 44**

Suspected cases	Confirmed cases	Deaths	Number of States and LGAs affected
149	1	0	State: 8 LGA: 51

**Table 17: COVID 19 Year to date (Week 1 – 44, 2024/2025)**

Year	Suspected cases	Confirmed cases	Deaths	CFR (%)
2024	1,897	805	1	0.1%
2025	3,454	59	0	0%

Figure 16: Trend of suspected and confirmed cases of Covid 19 by epidemiological, Week 44, 2025

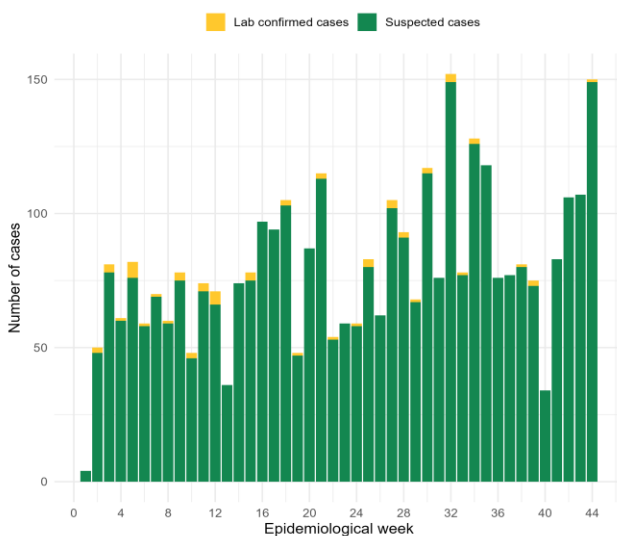
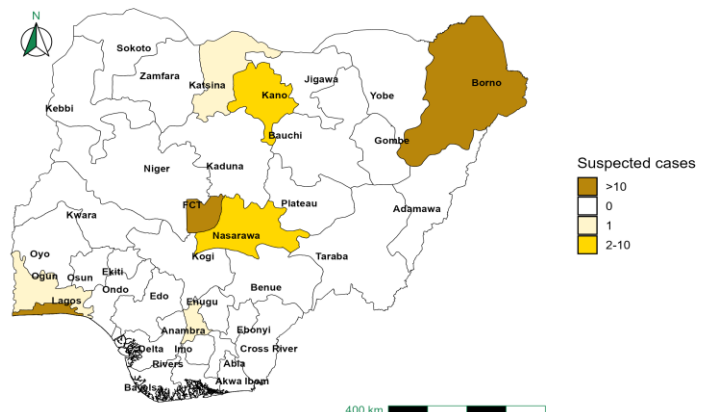


Figure 17: Suspected cases of Covid 19 by State, Nigeria, Week 44, 2025



### Key Point

- There were 149 suspected cases of COVID-19 reported from 51 LGAs in seven states and FCT.
- There was one laboratory confirmed case and no death was recorded.

### Actions

- National COVID-19 Technical Working Group (TWG) is monitoring activities in all states.
- Harmonisation of surveillance and laboratory data from across states and laboratories.

## Diphtheria

**Table 18: Week 44**

Suspected cases	Confirmed cases	Deaths	Number of States and LGAs affected
116	99	4	State: 6 + FCT LGA: 13

**Table 19: Diphtheria Year to date (Week 1 – 44, 2024/2025)**

Year	Suspected cases	Confirmed cases	Deaths	CFR (%)
2024	16,948	10,451	753	4.4%
2025	13,470	9,371	966	7.2%

Figure 18: Trend of suspected and confirmed cases of Diphtheria by epidemiological, Week 44, 2025

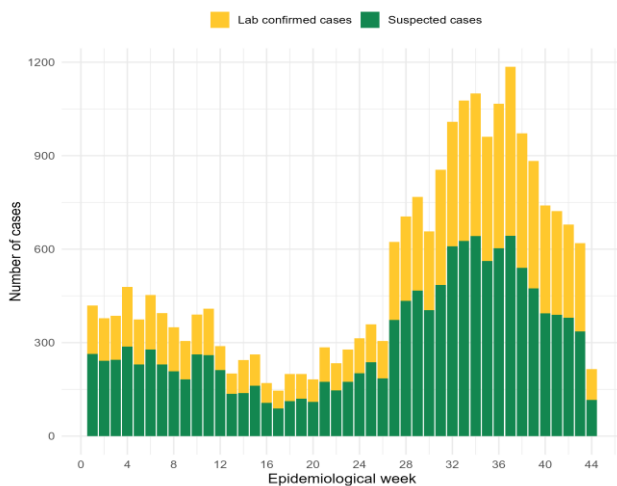
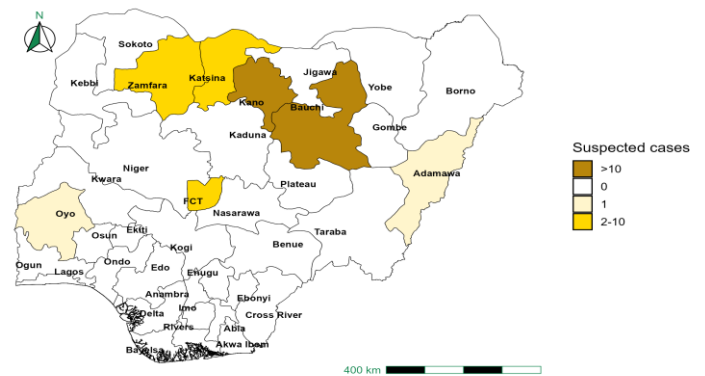


Figure 19: Suspected cases of Diphtheria by State, Nigeria, Week 44, 2025



### Key Point

- There were 116 suspected cases of Diphtheria reported from 13 LGAs in six states and FCT.
- There were 99 confirmed cases and four deaths were recorded.

### Actions

- National Diphtheria Technical Working Group (TWG) is monitoring activities in all states.
- Weekly EOC meeting.
- Provide technical and off-site support to states on case identification, reporting, and response, especially to non-reporting and low-burden states.

**National Influenza Sentinel Surveillance**

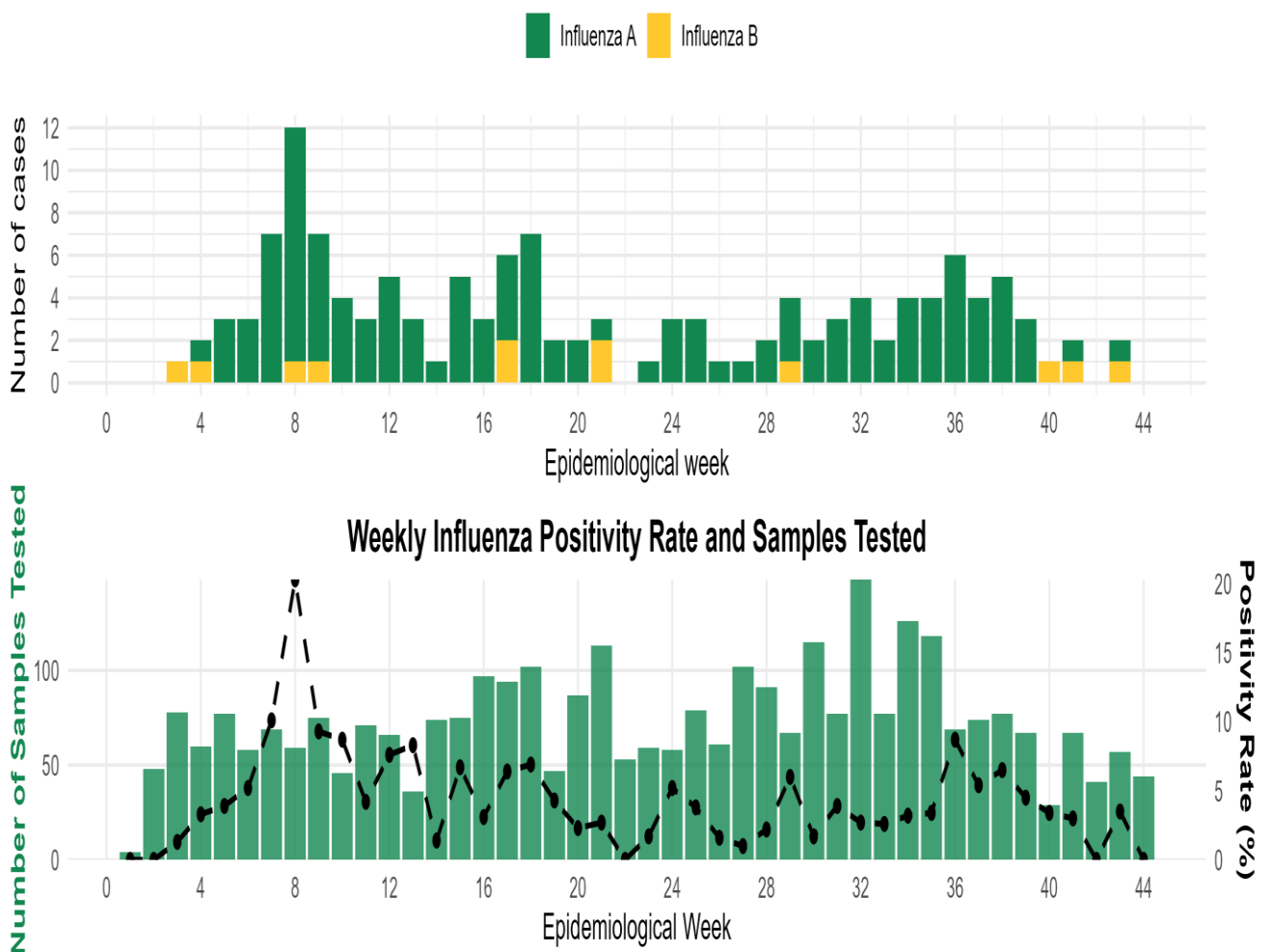
**Table 20: Week 44**

Suspected cases	Confirmed cases	Confirmed Case by type	
		Influenza A	Influenza B
149	0	0	0

**Table 21: Year to date (Week 1 – 44, 2025)**

Suspected cases	Confirmed cases	Confirmed Case by type	
		Influenza A	Influenza B
3,456	136	124	12

Figure 20: Number of influenza positive specimens by type and percentage positive by epidemiological week, 2025



## Event-based Surveillance (EBS)

### Week 44

#### Key Point

#### Epi Week 44

- 138 Calls were successfully routed to agents and answered
- Over 100 articles scanned through Epidemic Intelligence from Open Sources (EIOS) and other manual sources.
- From the calls, EIOS, and other manual sources, four signals were picked.

#### Cumulatively, 1 - 44

- 6,403 calls were successfully routed to agents and answered
- 68 Signals were picked and escalated

Figure 21: Number of signals/events per week, 2025.

