

Weekly Epidemiological Report

Week 37: 8th – 14th September 2025

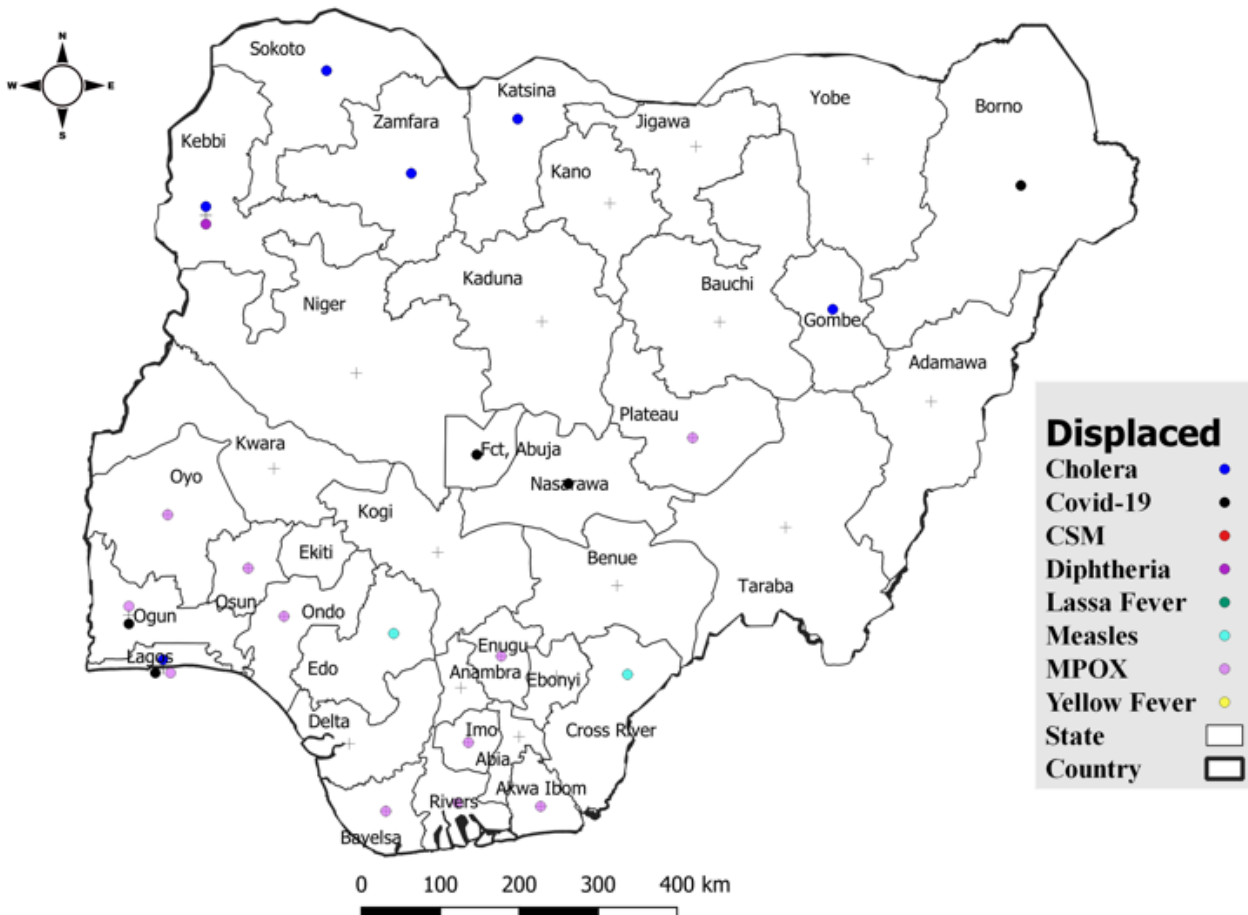
Summary of Incidents

Ongoing incidents
3

The Ongoing incidents within the reporting week are Cholera, Mpox and Diphtheria.

**Ongoing incidents are defined as confirmed cases where a national EOC or equivalent has been activated.*

Figure 1: Priority Diseases under surveillance in Nigeria, Week 37, 2025.



Summary of Diseases

Table 1: Week 37 (8th – 14th September 2025)

Lassa Fever₁	Cerebrospinal Meningitis (CSM)₂	Yellow Fever₂
146 Suspected case(s)	0 Suspected case(s)	13 Suspected case(s)
11 Confirmed case(s)	0 Confirmed case(s)	1 Confirmed case(s)
2 Death(s)	0 Death(s)	0 Death(s)
Cholera₂	Measles₂	Mpox₂
303 Suspected case(s)	3 Suspected case(s)	25 Suspected case(s)
0 Confirmed case(s)	0 Confirmed case(s)	7 Confirmed case(s)
9 Death(s)	0 Death(s)	0 Death(s)
Acute Flaccid Paralysis (AFP)₂	COVID-19₂	Diphtheria₂
22 Suspected case(s)	53 Suspected case(s)	2 Suspected case(s)
0 Confirmed case(s)	0 Confirmed case(s)	0 Confirmed case(s)
0 Death(s)	0 Death(s)	0 Death(s)
National Sentinel influenza surveillance₃		
53 Suspected case(s)		
1 Confirmed case(s)		

Information for all the diseases was retrieved from the Technical Working Group and Situation Reports of Nigerian Centre for Disease Control and Prevention

1. Case Fatality Rate (CFR) for this disease is reported for confirmed cases only.
2. CFR for this disease is reported for total cases i.e. suspected + confirmed.
3. Information for sentinel influenza was retrieved from the laboratory.

Lassa Fever

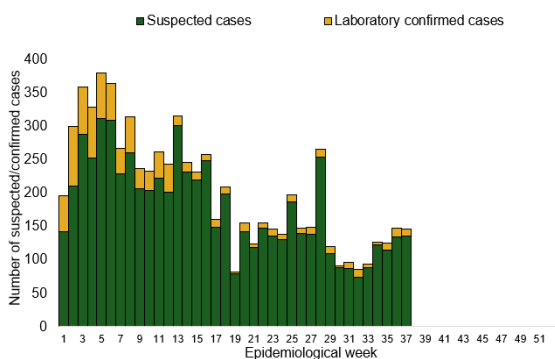
Table 1: Week 37

Suspected cases	Confirmed cases	Deaths	Number of States and LGAs affected
146	11	2	State: 11 + FCT LGA: 14

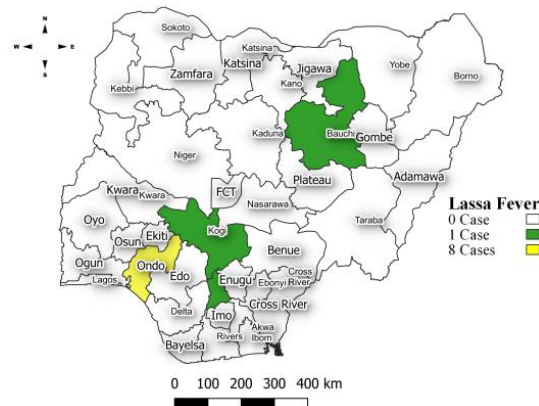
Table 2: Lassa Fever Year to date (Week 1 – 37, 2024/2025)

Suspected cases		Confirmed cases		Deaths		CFR	
2024	2025	2024	2025	2024	2025	2024	2025
8,251	7,673	1,005	895	170	166	16.9%	18.5%

Figure 2: Trend of suspected and confirmed cases of Lassa Fever by epidemiological weeks, 1-37, 2025.



*Figure 3: **Confirmed** cases of Lassa Fever by State, Nigeria, week 37, 2025.*



Key points

- There were 146 suspected cases of Lassa Fever reported from 14 LGAs in 11 states and FCT. There were 11 laboratory confirmed cases and two deaths were recorded.

Actions

To date:

- National Lassa fever multi-partner, multi-sectoral Technical Working Group (TWG) continues to coordinate the response activities at all levels.
- Providing offsite/onsite support to states.
- Following up on daily reporting and progress with response activities.

Cerebrospinal Meningitis (CSM)

Table 4: Week 37

Suspected cases	Confirmed cases	Deaths	Number of States and LGAs affected
0	0	0	State: 0 LGA: 0

Table 5: CSM Year to date (Week 1 – 37, 2024/2025)

Suspected cases		Confirmed cases		Deaths		CFR	
2024	2025	2024	2025	2024	2025	2024	2025
3,030	3,809	50	262	128	238	4.2%	6.2%

Figure 4: Trend of suspected and confirmed cases of CSM by epidemiological week, 2025.

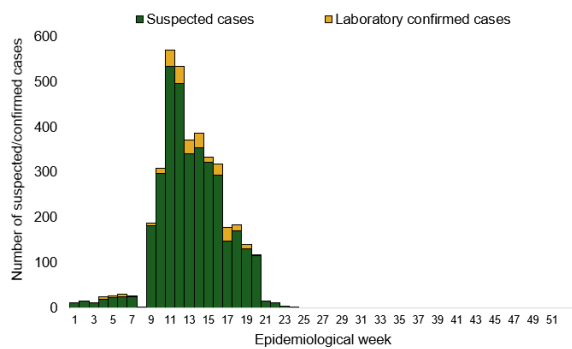
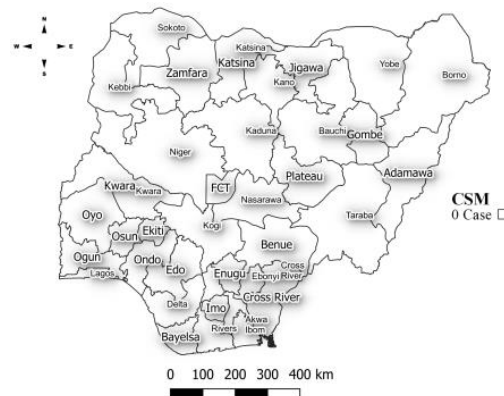


Figure 5: Suspected cases of CSM by State, Nigeria, week 37, 2025.



Key points

- There was no case of Cerebrospinal meningitis (CSM) reported for the week.

Yellow Fever

Table 6: Week 37

Suspected cases	Confirmed cases	Deaths	Number of States and LGAs affected
13	1	0	State: 11 LGA: 13

Table 7: Yellow Fever Year to date (Week 1 – 37, 2024/2025)

Suspected cases		Confirmed cases		Deaths		CFR	
2024	2025	2024	2025	2024	2025	2024	2025
2,198	1,722	20	17	2	5	0.1%	0.3%

Figure 6: Trend of suspected and confirmed cases of Yellow Fever by epidemiological week, 2025.

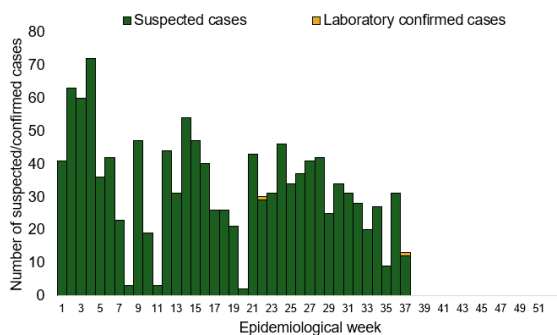
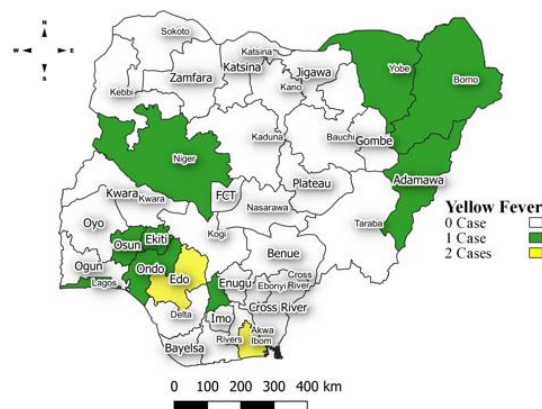


Figure 7: Suspected cases of Yellow Fever by State, Nigeria, week 37, 2025.



Key points

- There were 13 suspected cases of Yellow Fever (YF) reported from 13 LGAs in 11 states. There was one laboratory confirmed case and no death was recorded.

Actions

To date:

- National YF multi-partner Technical Working Group (TWG) continues to coordinate activities across states.
- Surveillance in all states through the routine Integrated Disease Surveillance and Response (IDSR)
- Providing offsite/onsite support to states.
- Following up on daily reporting and progress with response activities.

Cholera

Table 8: Week 37

Suspected cases	Confirmed cases	Deaths	Number of States and LGAs affected
303	0	9	State: 6 LGA: 16

Table 9: Cholera Year to date (Week 1 – 37, 2024/2025)

Suspected cases		Confirmed cases		Deaths		CFR	
2024	2025	2024	2025	2024	2025	2024	2025
11,289	10,353	234	77	397	244	3.5%	2.4%

Figure 8: Trend of suspected and confirmed cases of Cholera by epidemiological week, 2025.

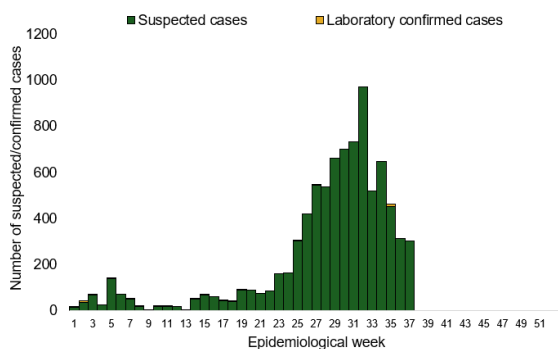
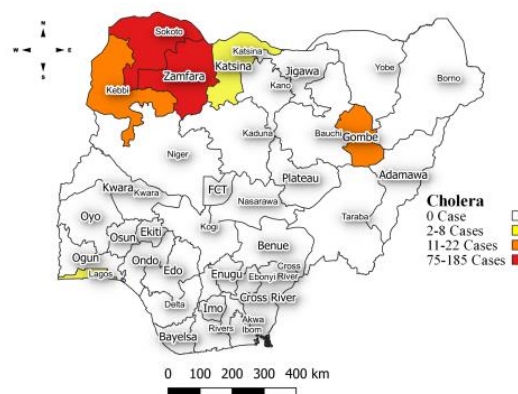


Figure 9: Trend of suspected and confirmed cases of Cholera, week 37, 2025.



Key points

- There were 303 suspected cases of Cholera reported from 16 LGAs in six states. There was no laboratory confirmed case and nine deaths were recorded.

Actions

To date:

- National Cholera Multi-Sectoral Technical Working Group (TWG) is monitoring all states and supporting affected states.
- Biweekly EOC Meetings.
- Surveillance in all states through the routine Integrated Disease Surveillance and Response (IDSR)
- Providing offsite/onsite support to states.
- Follow up on daily reporting and progress with response activities.

Measles

Table 10: Week 37

Suspected cases	Confirmed cases	Deaths	Number of States and LGAs affected
3	0	0	State: 2 LGA: 2

Table 11: Measles Year to date (Week 1 – 37, 2024/2025)

Suspected cases		Confirmed cases		Deaths		CFR	
2024	2025	2024	2025	2024	2025	2024	2025
18,061	17,861	11,941	9,511	76	118	0.4%	0.7%

Figure 10: Trend of suspected and confirmed cases of Measles by epidemiological week, 2025.

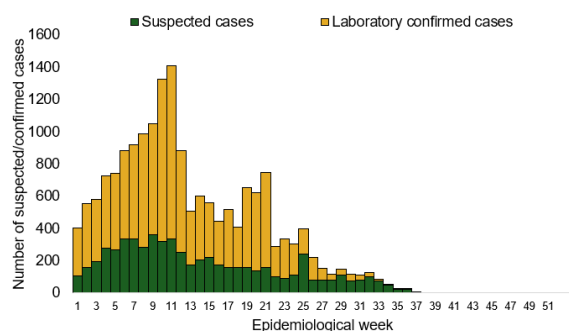
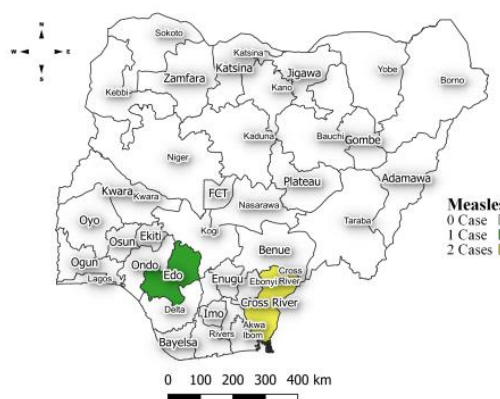


Figure 11: Suspected cases of Measles by State, Nigeria, week 37, 2025.



Key points

- There were three suspected cases of Measles reported from two LGAs in two states. There was no laboratory confirmed case and no death was recorded.

Actions

To date:

- National Measles Multi-Sectoral Technical Working Group (TWG) is closely monitoring measles surveillance data and providing feedback to relevant agencies and development partners.
- Harmonisation of laboratory results from across the laboratories.
- Weekly feedback of key performance indicators to measles laboratories.
- Providing offsite/onsite support to states.
- Follow up on daily reporting and progress with response activities.

Mpox

Table 12: Week 37

Suspected cases	Confirmed cases	Deaths	Number of States and LGAs affected
25	7	0	State: 11 LGA: 19

Table 13: Year to date (Week 1 – 37, 2024/2025)

Suspected cases		Confirmed cases		Deaths		CFR	
2024	2025	2024	2025	2024	2025	2024	2025
1,007	1,178	64	304	0	3	0%	0.3%

Figure 12: Trend of suspected and confirmed cases of Mpox by epidemiological week, 2025.

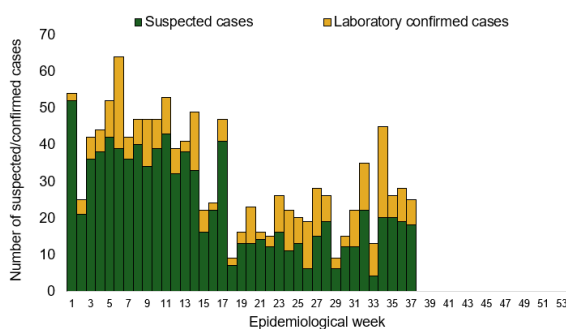
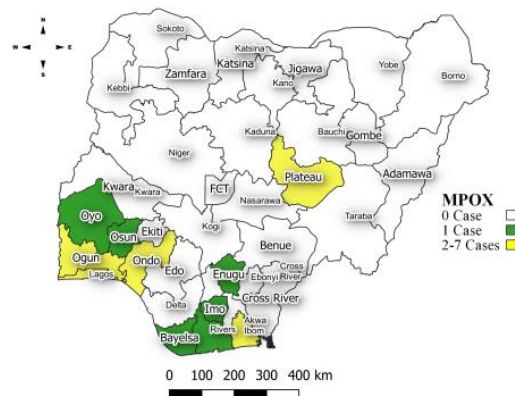


Figure 13: Suspected cases of Mpox by State, Nigeria, week 37, 2025.



Key points

- There were 25 suspected cases of Mpox reported from 19 LGAs in 11 states. There were seven laboratory confirmed cases and no death was recorded.

Actions

To date:

- National Monkeypox Technical Working Group (TWG) is monitoring activities in all states.
- Weekly EOC meetings.
- Provision of off-site surveillance support to affected States.
- Harmonisation of surveillance and laboratory data from across states and laboratories.

Acute Flaccid Paralysis (AFP)

Table 14: Week 37

Suspected cases	Confirmed cases	Deaths	Number of States and LGAs affected
22	0	0	State: 13 LGA: 22

Table 15: AFP Year to date (Week 1 – 37, 2024/2025)

Suspected cases		Confirmed cases		Deaths		CFR	
2024	2025	2024	2025	2024	2025	2024	2025
4,802	3,315	0	0	0	0	0%	0%

Figure 14: Trend of suspected and confirmed cases of AFP by epidemiological week, 2025.

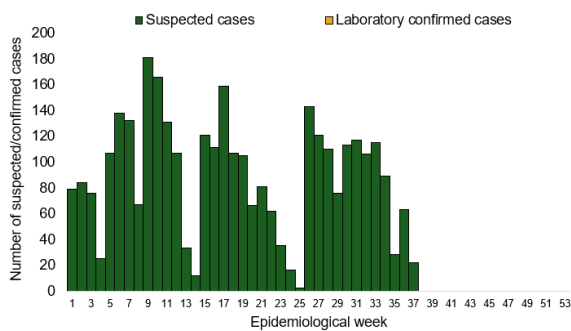
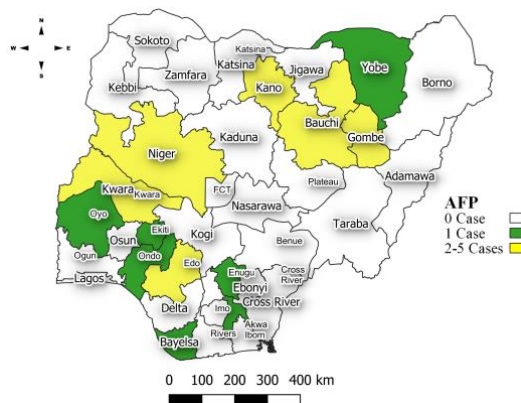


Figure 15: Suspected cases of AFP by State, Nigeria, week 37, 2025.



Key points

- There were 22 suspected cases of AFP reported from 22 LGAs in 13 states. There was no laboratory confirmed case and no death was recorded.

COVID-19

Table 16: Week 37

Suspected cases	Confirmed cases	Deaths	Number of States and LGAs affected
53	0	0	State: 4 + FCT LGA: 24

Table 17: COVID-19 Year to date (Week 1- 37, 2024/2025)

Suspected cases		Confirmed cases		Deaths		CFR	
2024	2025	2024	2025	2024	2025	2024	2025
1,701	2,536	804	38	1	0	0.1%	0%

Figure 16: Trend of suspected and confirmed cases of COVID-19 by epidemiological week, 2025.

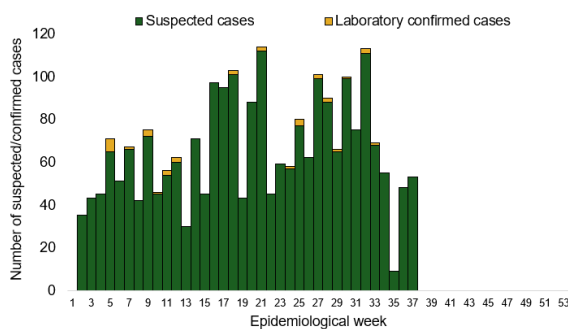
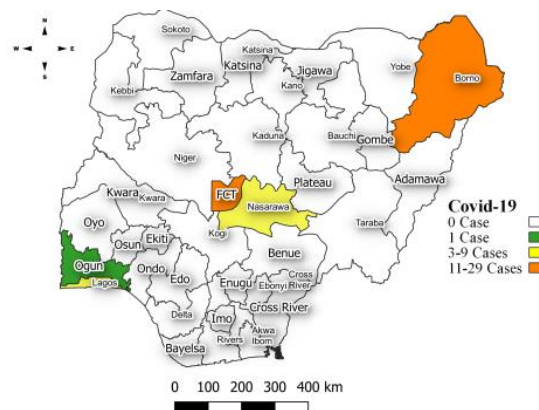


Figure 17: Suspected cases of COVID-19 by State, Nigeria, week 37, 2025.



Key points

- There were 53 suspected cases of COVID-19 reported from 24 LGAs in four states and FCT. There was no laboratory confirmed case and no death was recorded.

Actions

To date:

- National COVID-19 Technical Working Group (TWG) is monitoring activities in all states.
- Harmonisation of surveillance and laboratory data from across states and laboratories.
- Provision of off-site surveillance support to affected States.

Diphtheria

Table 18: Week 37

Suspected cases	Confirmed cases	Deaths	Number of States and LGAs affected
2	0	0	State: 1 LGA: 1

Table 19: Diphtheria Year to date (week 1 – 37, 2024/2025)

Suspected cases		Confirmed cases		Deaths		CFR	
2024	2025	2024	2025	2024	2025	2024	2025
15,812	6,301	9,963	4,302	429	305	3%	4.8%

Figure 18: Trend of suspected and confirmed cases of Diphtheria by epidemiological week, 2025.

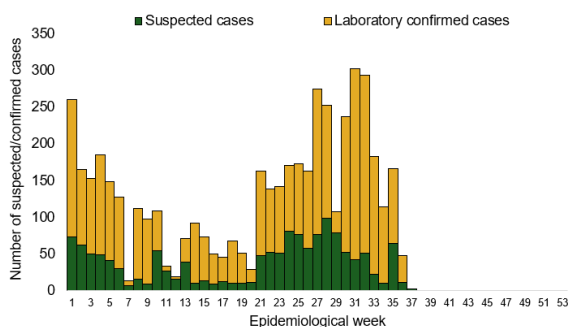
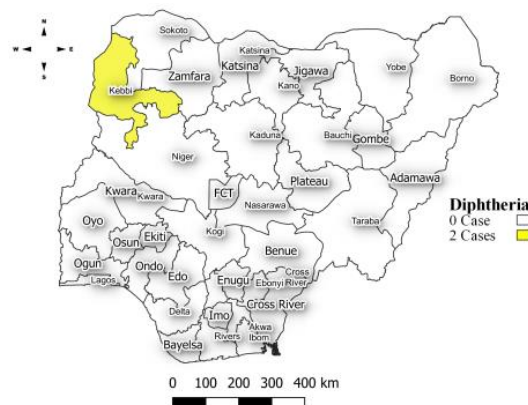


Figure 19: Suspected cases of Diphtheria by State, Nigeria, week 37, 2025.



Key points

- There were two suspected cases of Diphtheria reported from one LGA in Kebbi state. There was no confirmed case and no death was recorded.

Actions

To date:

- National Diphtheria Technical Working Group (TWG) is monitoring activities in all states.
- Weekly EOC meeting.
- Provide technical and off-site support to states on case identification, reporting, and response, especially to non-reporting and low-burden states.
- Data harmonization with laboratory and case management pillars.

National Influenza Sentinel Surveillance

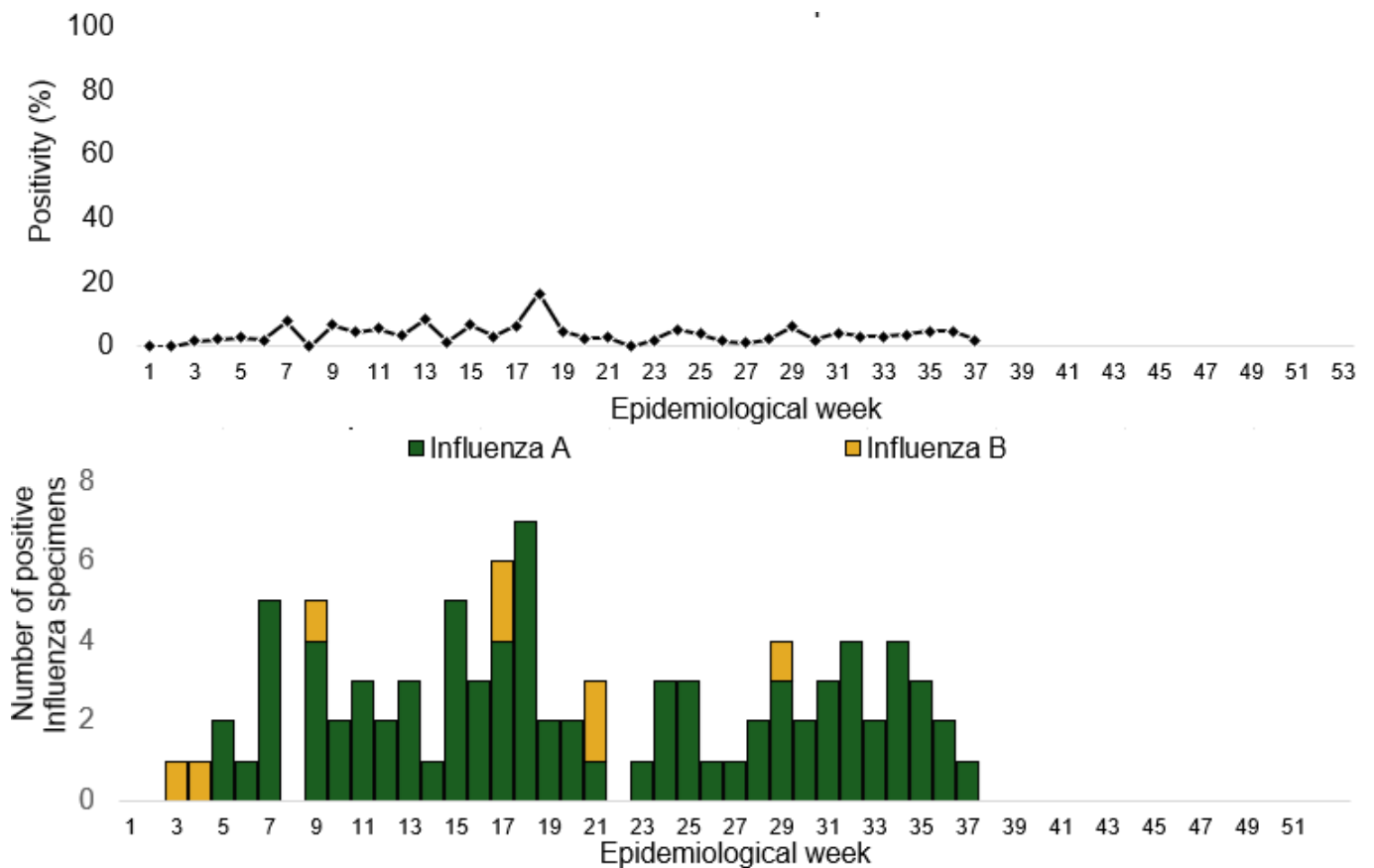
Table 20: Week 37

Suspected cases	Confirmed Cases	Confirmed Case by type	
		Influenza A	Influenza B
53	1	1	0

Table 21: Year to date (week 1 – 37)

Suspected cases	Total Confirmed Cases	Confirmed Case by type	
		Influenza A	Influenza B
2,728	115	106	9

Figure 20: Number of influenza positive specimens by type and percentage positive by epidemiological week, 2025.



Event Based Surveillance (EBS)

Week 37

Key points

Epi Week 37

- 266 calls were successfully routed to agents and answered.
- Over 900 articles scanned through Epidemic Intelligence from Open Sources (EIOS) and other manual sources.
- From the calls, EIOS, and other manual sources, two signals were picked.

Cumulatively, from week 1 - 37

- 5,169 calls were successfully routed to agents and answered.
- 63 Signals were picked and escalated.

Figure 22: Number of signals/events per week, 2025.

