

NIGERIA CENTRE FOR DISEASE CONTROL AND PREVENTION

**Nigeria Centre for Disease Control and Prevention**

*Protecting the health of Nigerians*

## Weekly Epidemiological Report

Week 26: 23<sup>rd</sup> – 29<sup>th</sup> June 2025

### Highlight of the week

#### STRENGTHENING NIGERIA'S CHOLERA PREPAREDNESS & RESPONSE



The Nigeria Centre for Disease Control and Prevention (NCDC), in collaboration with key partners and the National Cholera Technical Working Group, convened a five-day stakeholders' meeting to review and strengthen Nigeria's cholera response framework. The meeting brought together representatives from high-burden states, development partners, and public health experts, with a focus on reducing the country's cholera Case Fatality Rate (CFR) to below 1%.

Participants reviewed current response strategies, identified sustainable interventions, and launched a multi-year Oral Cholera Vaccination (OCV) plan to support long-term prevention. This collaboration represents a major step toward building a more resilient, data-driven cholera response in Nigeria and supports the global goal of ending cholera by 2030.

## Summary of Incidents

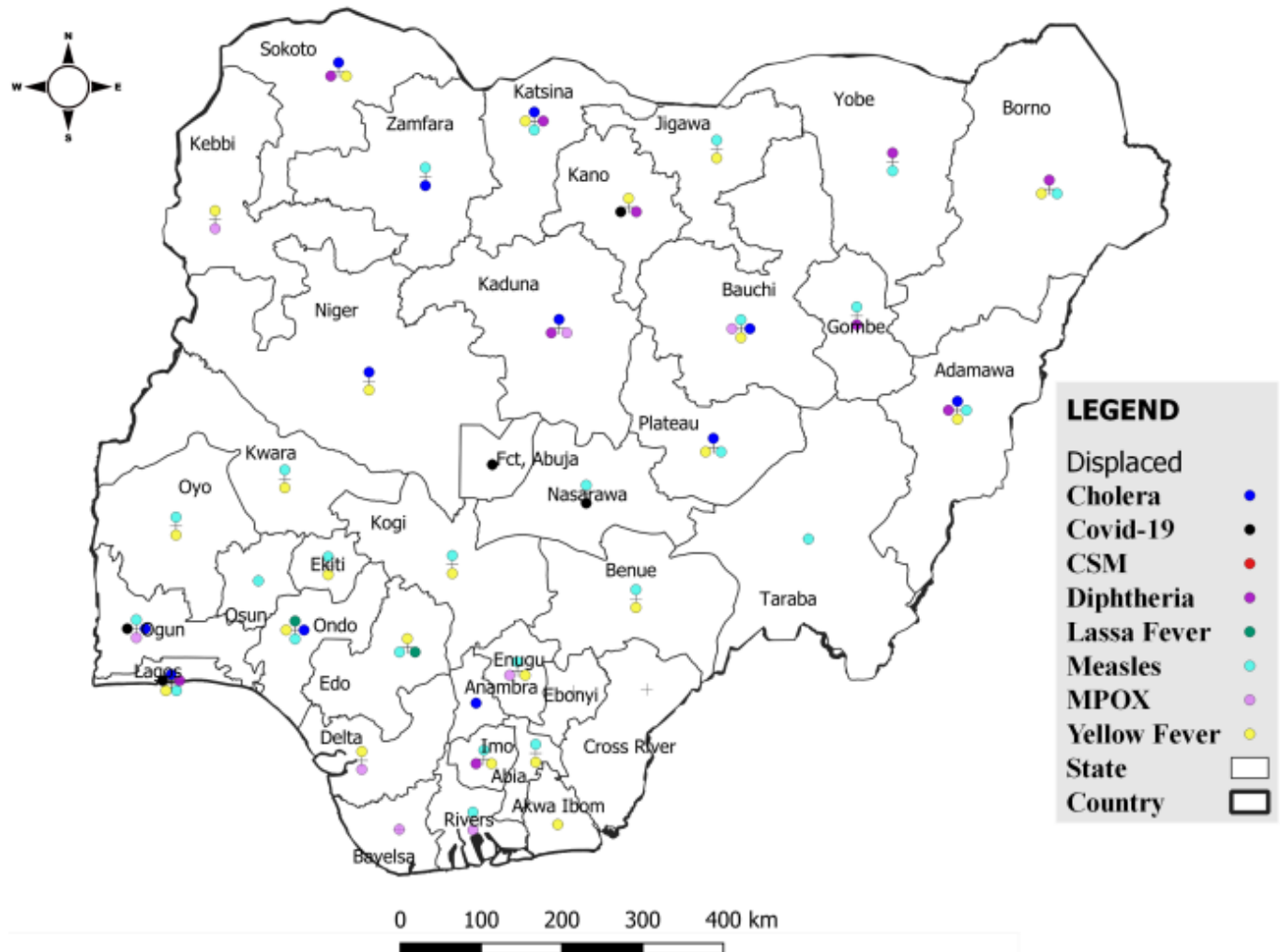
Ongoing incidents

3

The Ongoing incidents within the reporting week are Cholera, Mpox and Diphtheria.

*\*Ongoing incidents are defined as confirmed cases where a national EOC or equivalent has been activated.*

Figure 1: Priority Diseases under surveillance in Nigeria, week 26, 2025.



## Summary of Diseases

**Table 1: Week 26 (23<sup>rd</sup>– 29<sup>th</sup> June 2025)**

<b>Lassa Fever<sub>1</sub></b>	<b>Cerebrospinal Meningitis (CSM)<sub>2</sub></b>	<b>Yellow Fever<sub>2</sub></b>
148 Suspected case(s)	0 Suspected case(s)	37 Suspected case(s)
9 Confirmed case(s)	0 Confirmed case(s)	0 Confirmed case(s)
3 Death(s)	0 Death(s)	0 Death(s)
<b>Cholera<sub>2</sub></b>	<b>Measles<sub>2</sub></b>	<b>Mpox<sub>2</sub></b>
420 Suspected case(s)	198 Suspected case(s)	19 Suspected case(s)
0 Confirmed case(s)	128 Confirmed case(s)	13 Confirmed case(s)
11 Death(s)	0 Death(s)	0 Death(s)
<b>Acute Flaccid Paralysis (AFP)<sub>2</sub></b>	<b>COVID-19<sub>2</sub></b>	<b>Diphtheria<sub>2</sub></b>
143 Suspected case(s)	62 Suspected case(s)	162 Suspected case(s)
0 Confirmed case(s)	0 Confirmed case(s)	105 Confirmed case(s)
0 Death(s)	0 Death(s)	8 Death(s)
<b>National Sentinel influenza surveillance<sub>3</sub></b>		
62 Suspected case(s)		
1 Confirmed case(s)		

Information for all the diseases was retrieved from the Technical Working Group and Situation Reports of Nigerian Centre for Disease Control and Prevention

1. Case Fatality Rate (CFR) for this disease is reported for confirmed cases only.
2. CFR for this disease is reported for total cases i.e. suspected + confirmed.
3. Information for sentinel influenza was retrieved from the laboratory.

## Lassa Fever

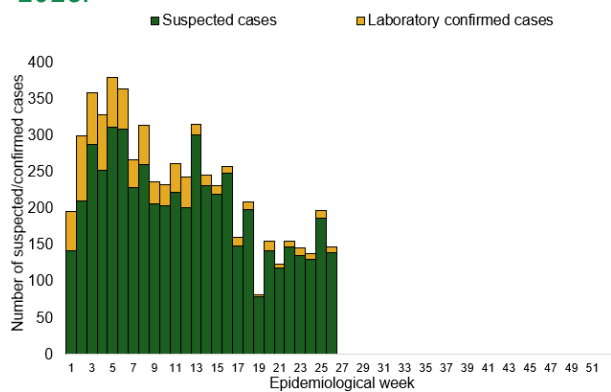
**Table 1: Week 26**

Suspected cases	Confirmed cases	Deaths	Number of States and LGAs affected
148	9	3	State: 13 LGA: 16

**Table 2: Lassa Fever Year to date (week 1 – 26, 2024/2025)**

Suspected cases		Confirmed cases		Deaths		CFR	
2024	2025	2024	2025	2024	2025	2024	2025
7,020	6,109	928	790	162	148	17.5%	18.7%

*Figure 2: Trend of suspected and confirmed cases of Lassa Fever by epidemiological week, 2025.*



*Figure 3: **Confirmed** cases of Lassa Fever by State, Nigeria, week 26, 2025.*



### Key points

- There were 148 suspected cases of Lassa Fever reported from 16 LGAs in 13 states. There were nine laboratory confirmed cases and three deaths were recorded.

### Actions

#### To date:

- National Lassa fever multi-partner, multi-sectoral Technical Working Group (TWG) continues to coordinate the response activities at all levels.

## Cerebrospinal Meningitis (CSM)

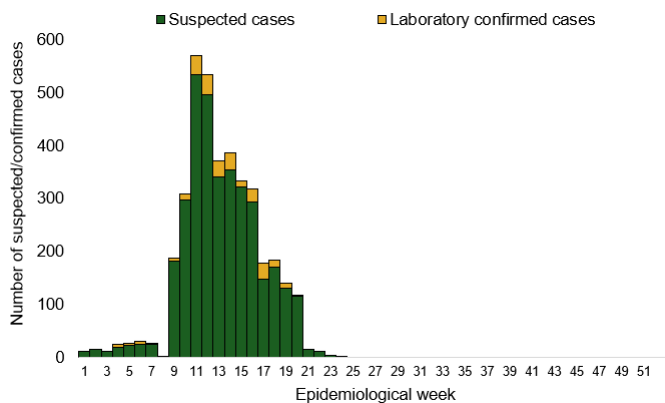
**Table 4: Week 26**

Suspected cases	Confirmed cases	Deaths	Number of States and LGAs affected
0	0	0	State: 0 LGA: 0

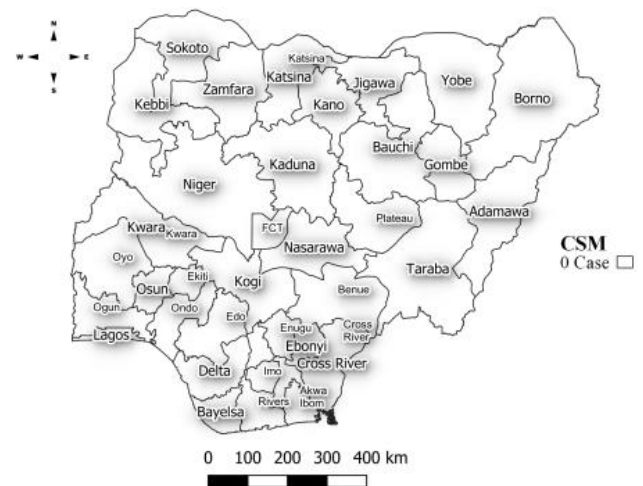
**Table 5: CSM Year to date (week 1 – 26, 2024/2025)**

Suspected cases		Confirmed cases		Deaths		CFR	
2024	2025	2024	2025	2024	2025	2024	2025
3,011	3,809	50	262	128	238	4.3%	6.2%

*Figure 4: Trend of suspected and confirmed cases of CSM by epidemiological week, 2025.*



*Figure 5: Suspected cases of CSM by State, Nigeria, week 26, 2025.*



### Key points

- There was no case of Cerebrospinal meningitis (CSM) reported for the week.

## Yellow Fever

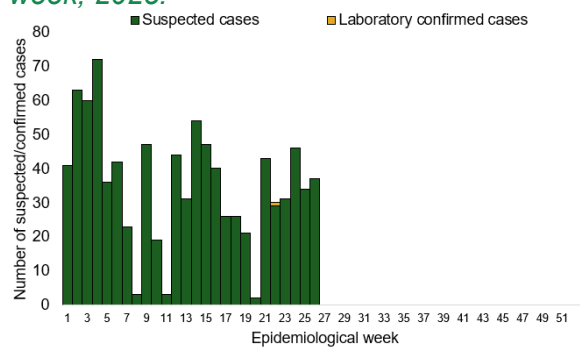
**Table 6: Week 26**

Suspected cases	Confirmed cases	Deaths	Number of States and LGAs affected
37	0	0	State: 23 LGA: 33

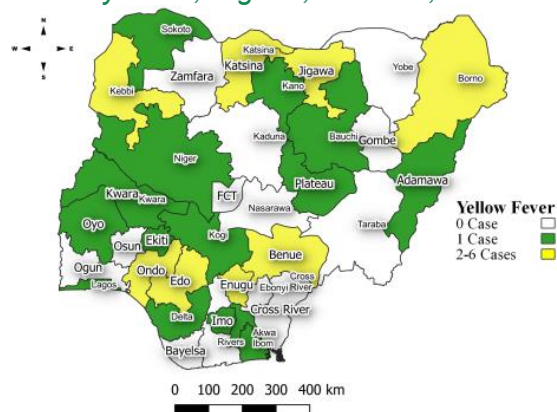
**Table 7: Yellow Fever Year to date (week 1 – 26, 2024/2025)**

Suspected cases		Confirmed cases		Deaths		CFR	
2024	2025	2024	2025	2024	2025	2024	2025
1,567	1,302	8	8	2	0	0.1%	0%

*Figure 6: Trend of suspected and confirmed cases of Yellow Fever by epidemiological week, 2025.*



*Figure 7: Suspected cases of Yellow Fever by State, Nigeria, week 26, 2025.*



### Key points

- There were 37 suspected cases of Yellow Fever (YF) reported from 33 LGAs in 23 states. There was no laboratory confirmed case and no death was recorded.

### Actions

#### To date:

- National YF multi-partner Technical Working Group (TWG) continues to coordinate activities across states.
- Surveillance in all states through the routine Integrated Disease Surveillance and Response (IDSR)
- Providing offsite support to states and following up on daily reporting and progress with response activities.

## Cholera

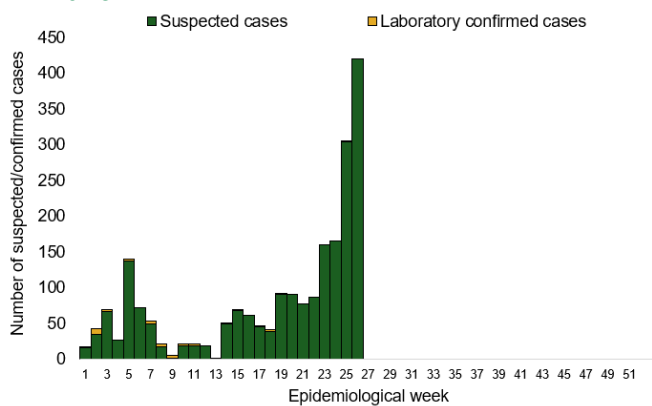
**Table 8: Week 26**

Suspected cases	Confirmed cases	Deaths	Number of States and LGAs affected
420	0	11	State: 12 LGA: 25

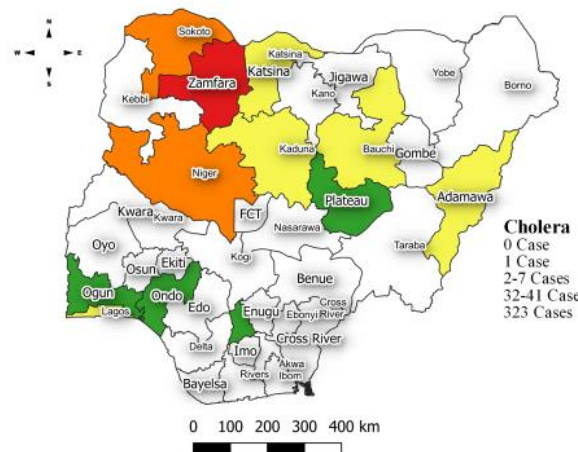
**Table 9: Cholera Year to date (week 1 – 26, 2024/2025)**

Suspected cases		Confirmed cases		Deaths		CFR	
2024	2025	2024	2025	2024	2025	2024	2025
4,509	3,697	58	51	130	112	2.9%	3%

*Figure 8: Trend of suspected and confirmed cases of Cholera by epidemiological week, 2025.*



*Figure 9: Trend of suspected and confirmed cases of Cholera, week 26 2025.*



### Key points

- There were 420 suspected cases of Cholera reported from 25 LGAs in 12 states. There was no laboratory confirmed case and 11 deaths were recorded.

### Actions

#### To date:

- National Cholera Multi-Sectoral Technical Working Group (TWG) is monitoring all states and supporting affected states.
- Biweekly EOC Meetings.
- Surveillance in all states through the routine Integrated Disease Surveillance and Response (IDSR)
- Providing offsite/onsite support to states and follow up for daily reporting and progress with response activities.

## Measles

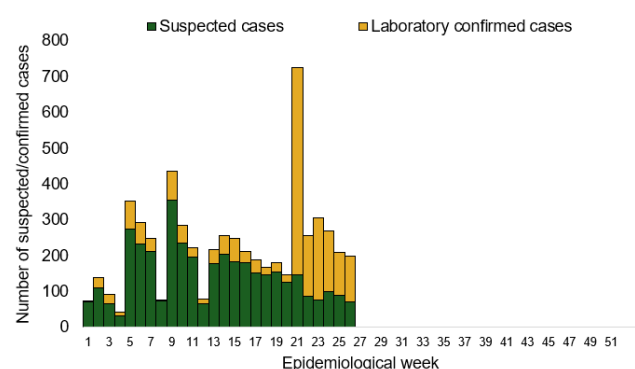
**Table 10: Week 26**

Suspected cases	Confirmed cases	Deaths	Number of States and LGAs affected
198	128	0	State: 25 LGA: 72

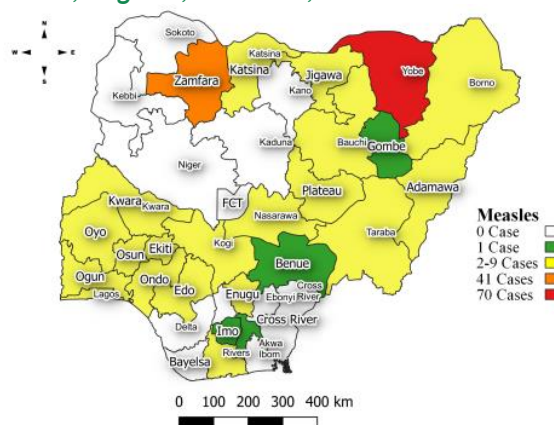
**Table 11: Measles Year to date (week 1 – 26, 2024/2025)**

Suspected cases		Confirmed cases		Deaths		CFR	
2024	2025	2024	2025	2024	2025	2024	2025
15,853	14,858	8,803	9,688	112	0	0.7%	0%

*Figure 10: Trend of suspected and confirmed cases of Measles by epidemiological week, 2025.*



*Figure 11: Suspected cases of Measles by State, Nigeria, week 26, 2025.*



### Key points

- There were 198 suspected cases of Measles reported from 72 LGAs in 25 states. There were 128 laboratory confirmed cases and no death was recorded.

### Actions

#### To date:

- National Measles Multi-Sectoral Technical Working Group (TWG) is closely monitoring measles surveillance data and providing feedback to relevant agencies and development partners.
- Harmonisation of laboratory results from across the laboratories.
- Weekly feedback of key performance indicators to measles laboratories.
- Providing offsite/onsite support to states and follow up for daily reporting and progress with response activities.

## Mpox

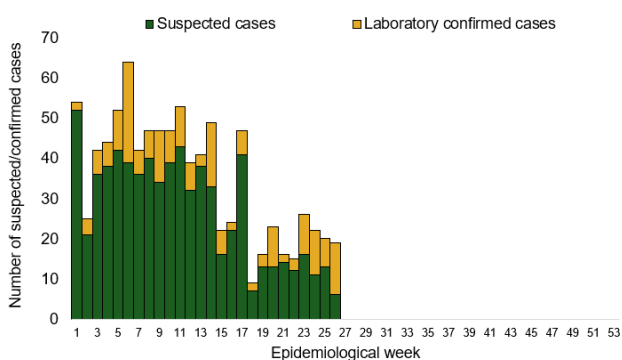
**Table 12: Week 26**

Suspected cases	Confirmed cases	Deaths	Number of States and LGAs affected
19	13	0	State: 8 LGA: 12

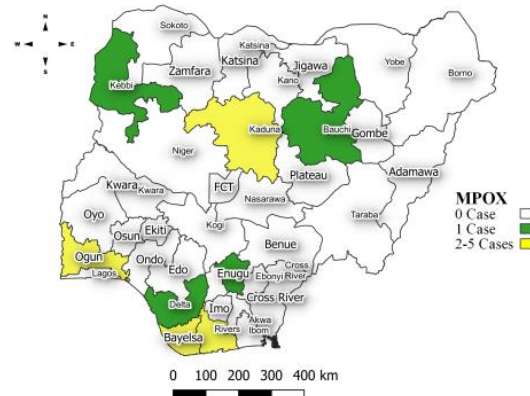
**Table 13: Year to date (week 1 – 26, 2024/2025)**

Suspected cases		Confirmed cases		Deaths		CFR	
2024	2025	2024	2025	2024	2025	2024	2025
667	906	31	199	0	3	0%	0.3%

*Figure 12: Trend of suspected and confirmed cases of Mpox by epidemiological week, 2025.*



*Figure 13: Suspected cases of Mpox by State, Nigeria, week 26, 2025.*



### Key points

- There were 19 suspected cases of Mpox reported from 12 LGAs in eight states. There were 13 laboratory confirmed cases and no death was recorded.

### Actions

#### To date:

- National Monkeypox Technical Working Group (TWG) is monitoring activities in all states.
- Weekly EOC meetings.
- Provision of off-site surveillance support to affected States.
- Harmonisation of surveillance and laboratory data from across states and laboratories.

## Acute Flaccid Paralysis (AFP)

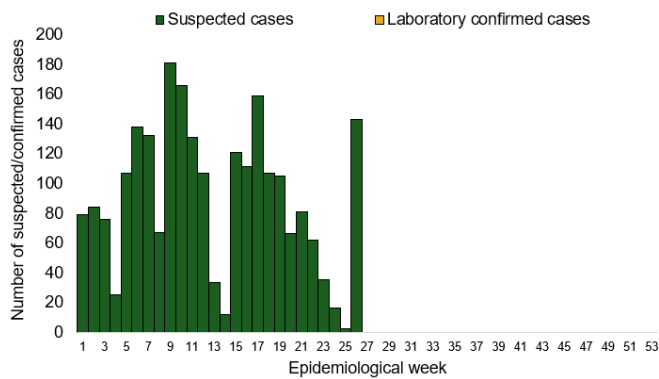
**Table 14: Week 26**

Suspected cases	Confirmed cases	Deaths	Number of States and LGAs affected
143	0	0	State: 27 + FCT LGA: 143

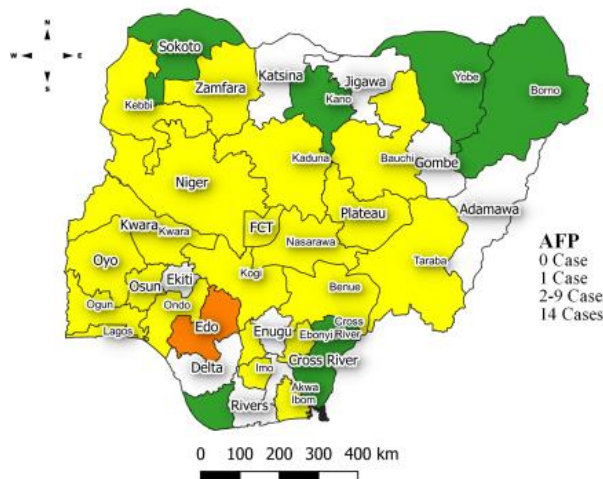
**Table 15: AFP Year to date (week 1 – 26, 2024/2025)**

Suspected cases		Confirmed cases		Deaths		CFR	
2024	2025	2024	2025	2024	2025	2024	2025
3,783	2,598	0	0	0	0	0%	0%

*Figure 14: Trend of suspected and confirmed cases of AFP by epidemiological week, 2025.*



*Figure 15: Suspected cases of AFP by State, Nigeria, week 26, 2025.*



### Key points

- There were 143 suspected cases of AFP reported from 143 LGAs in 27 states and FCT. There was no laboratory confirmed case and no death was recorded.

## COVID-19

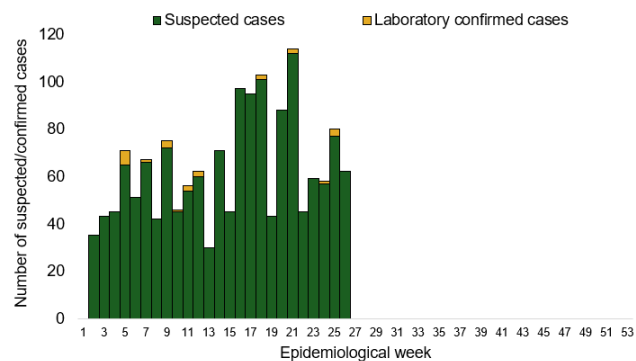
**Table 16: Week 26**

Suspected cases	Confirmed cases	Deaths	Number of States and LGAs affected
62	0	0	State: 4 + FCT LGA: 34

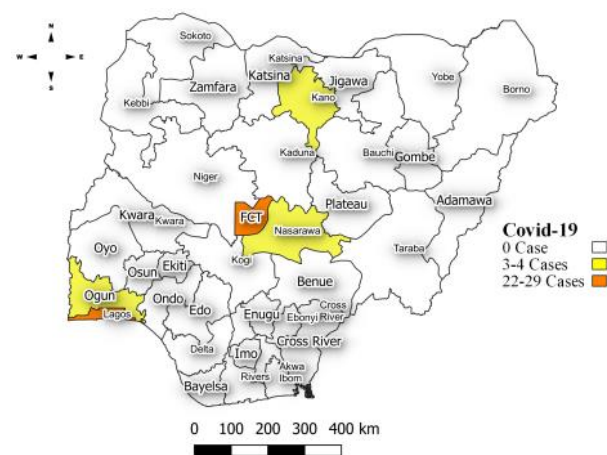
**Table 17: Covid 19 Year to date (Week 1- 26, 2024/2025)**

Suspected cases		Confirmed cases		Deaths		CFR	
2024	2025	2024	2025	2024	2025	2024	2025
796	1,645	796	28	1	0	0.1%	0%

*Figure 16: Trend of suspected and confirmed cases of COVID-19 by epidemiological week, 2025.*



*Figure 17: Suspected cases of COVID-19 by State, Nigeria, week 26, 2025.*



### Key points

- There were 62 suspected cases of Covid 19 reported from 34 LGAs in four states and FCT. There was no laboratory confirmed case and no death was recorded.

### Actions

#### To date:

- National Covid 19 Technical Working Group (TWG) is monitoring activities in all states.
- Harmonisation of surveillance and laboratory data from across states and laboratories.
- Provision of off-site surveillance support to affected States.

## Diphtheria

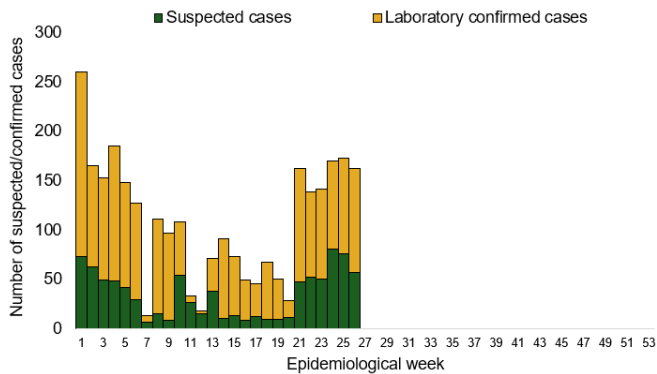
**Table 18: Week 26**

Suspected cases	Confirmed cases	Deaths	Number of States and LGAs affected
162	105	8	State: 10 LGA: 40

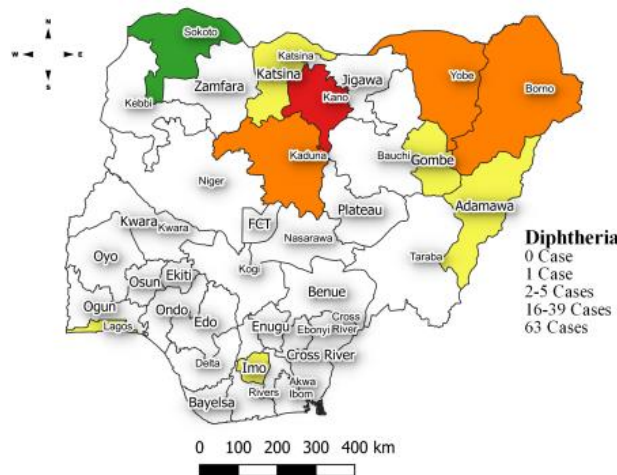
**Table 19: Diphtheria Year to date (week 1 – 26, 2024/2025)**

Suspected cases		Confirmed cases		Deaths		CFR	
2024	2025	2024	2025	2024	2025	2024	2025
10,962	4,325	7,156	2,830	192	159	1.8%	3.7%

*Figure 18: Trend of suspected and confirmed cases of Diphtheria by epidemiological week, 2025.*



*Figure 19: Suspected cases of Diphtheria by State, Nigeria, week 26, 2025.*



### Key points

- There were 162 suspected cases of Diphtheria reported from 40 LGAs in 10 states. There were 105 confirmed cases and eight deaths were recorded.

### Actions

#### To date:

- National Diphtheria Technical Working Group (TWG) is monitoring activities in all states.
- Weekly EOC meeting.
- Provide technical and off-site support to states on case identification, reporting, and response, especially to non-reporting and low-burden states.
- Data harmonization with laboratory and case management pillars.

## National Influenza Sentinel Surveillance

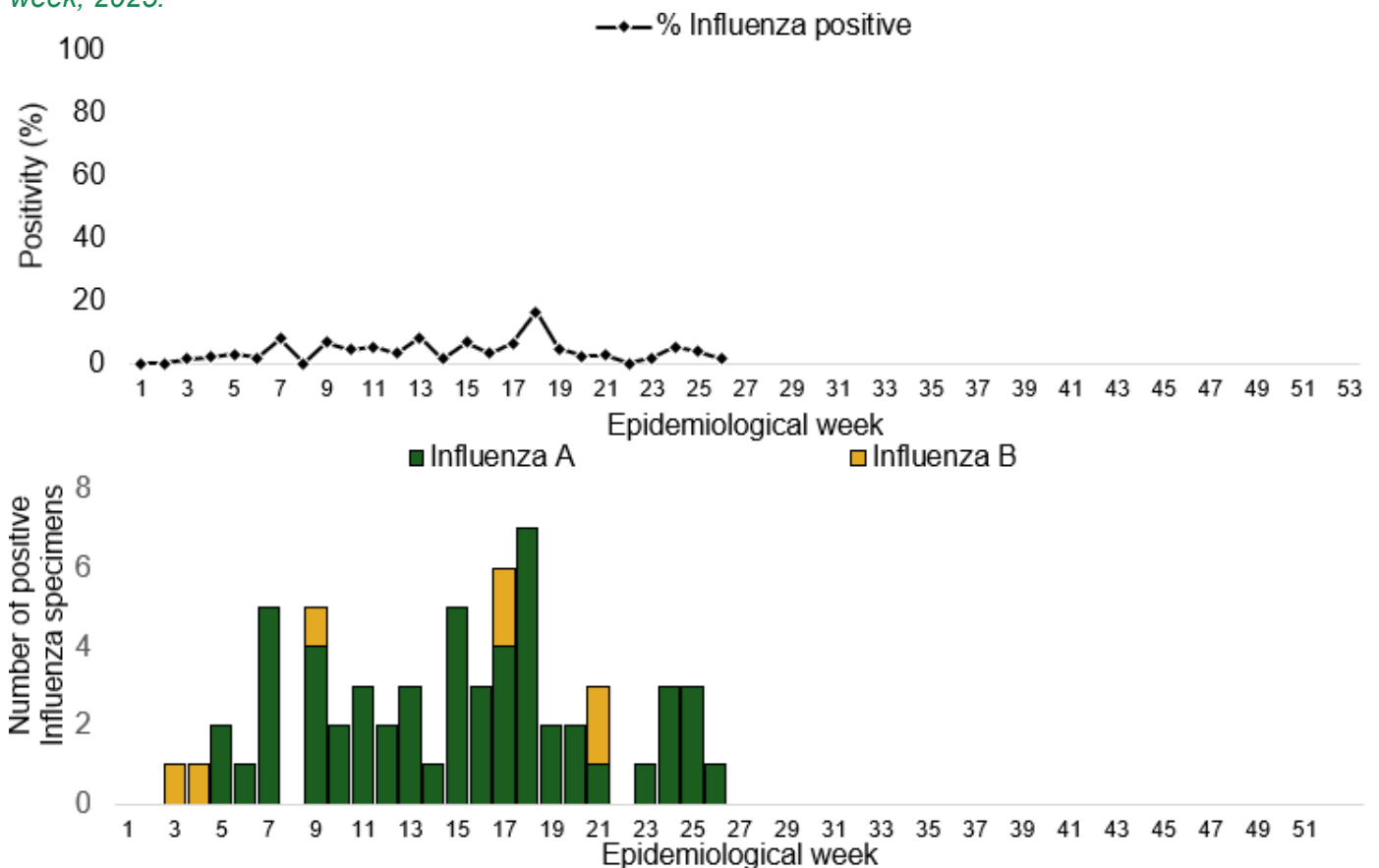
**Table 20: Week 26**

Suspected cases	Confirmed Cases	Confirmed Case by type	
		Influenza A	Influenza B
62	1	1	0

**Table 21: Year to date (week 1 – 26)**

Suspected cases	Total Confirmed Cases	Confirmed Case by type	
		Influenza A	Influenza B
1,749	87	79	8

*Figure 20: Number of influenza positive specimens by type and percentage positive by epidemiological week, 2025.*



## Event Based Surveillance (EBS)

### Week 26

#### Key points

##### Epi Week 26

- 132 calls were successfully routed to agents and answered.
- Over 1,170 articles scanned through Epidemic Intelligence from Open Sources (EIOS) and other manual sources.
- From the calls, EIOS, and other manual sources, one signal was picked and escalated to the corresponding TWG.
  - Six confirmed diphtheria cases and three deaths recorded in Edo State.

##### Cumulatively, from week 1 - 26

- 3,080 calls were successfully routed to agents and answered.
- 41 Signals were picked and escalated.

Figure 22: Number of signals/events per week, 2025.

