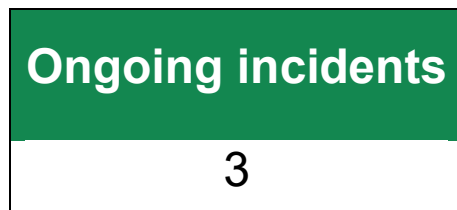


Weekly Epidemiological Report

Week 34: 18th – 24th August 2025

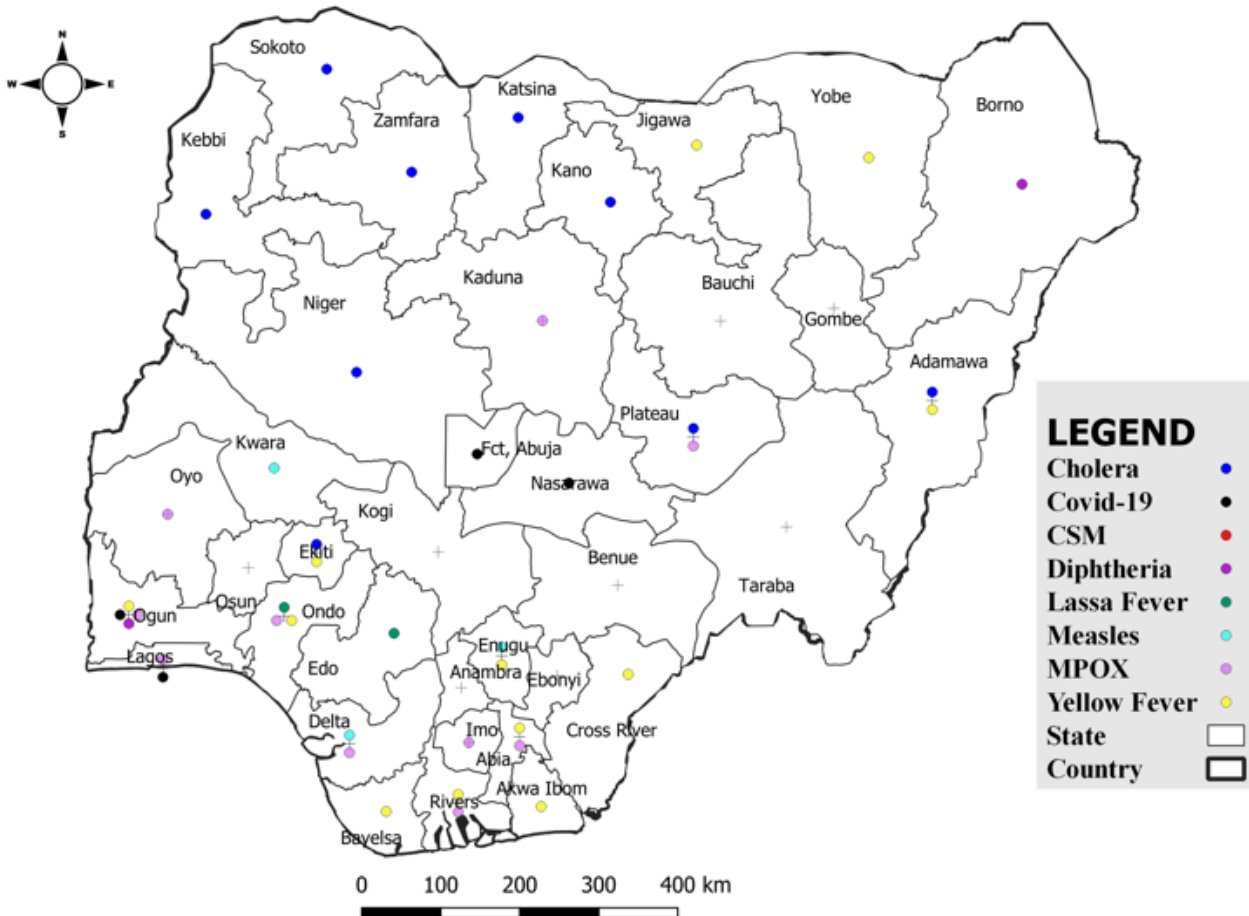
Summary of Incidents



The Ongoing incidents within the reporting week are Cholera, Mpox and Diphtheria.

**Ongoing incidents are defined as confirmed cases where a national EOC or equivalent has been activated.*

Figure 1: Priority Diseases under surveillance in Nigeria, Week 34, 2025.



Summary of Diseases

Table 1: Week 34 (18th – 24th August 2025)

Lassa Fever₁	Cerebrospinal Meningitis (CSM)₂	Yellow Fever₂
126 Suspected case(s)	0 Suspected case(s)	27 Suspected case(s)
3 Confirmed case(s)	0 Confirmed case(s)	0 Confirmed case(s)
1 Death(s)	0 Death(s)	0 Death(s)
Cholera₂	Measles₂	Mpox₂
647 Suspected case(s)	7 Suspected case(s)	45 Suspected case(s)
0 Confirmed case(s)	2 Confirmed case(s)	25 Confirmed case(s)
17 Death(s)	0 Death(s)	0 Death(s)
Acute Flaccid Paralysis (AFP)₂	COVID-19₂	Diphtheria₂
89 Suspected case(s)	55 Suspected case(s)	114 Suspected case(s)
0 Confirmed case(s)	0 Confirmed case(s)	105 Confirmed case(s)
0 Death(s)	0 Death(s)	6 Death(s)
National Sentinel influenza surveillance₃		
110 Suspected case(s)		
4 Confirmed case(s)		

Information for all the diseases was retrieved from the Technical Working Group and Situation Reports of Nigerian Centre for Disease Control and Prevention

1. Case Fatality Rate (CFR) for this disease is reported for confirmed cases only.
2. CFR for this disease is reported for total cases i.e. suspected + confirmed.
3. Information for sentinel influenza was retrieved from the laboratory.

Lassa Fever

Table 1: Week 34

Suspected cases	Confirmed cases	Deaths	Number of States and LGAs affected
126	3	1	State: 13 LGA: 22

Table 2: Lassa Fever Year to date (Week 1 – 34, 2024/2025)

Suspected cases		Confirmed cases		Deaths		CFR	
2024	2025	2024	2025	2024	2025	2024	2025
7,973	7,160	982	857	168	160	17.1%	18.7%

Figure 2: Trend of suspected and confirmed cases of Lassa Fever by epidemiological week 34, 2025.

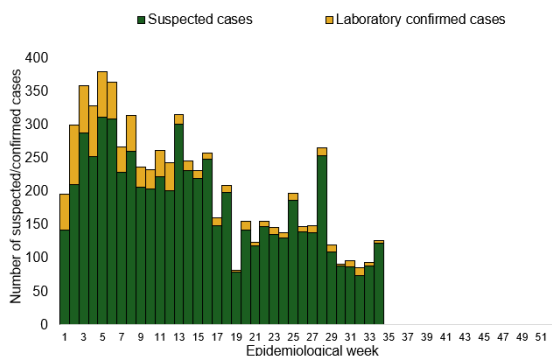
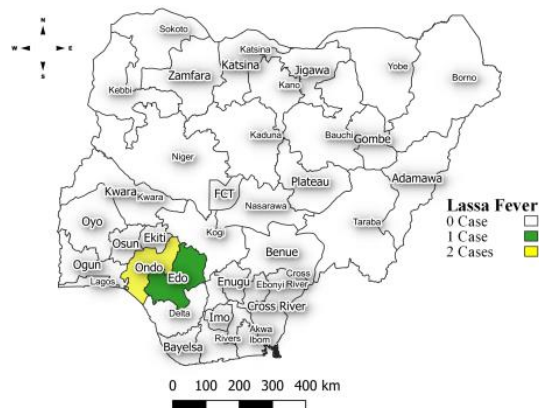


Figure 3: Confirmed cases of Lassa Fever by State, Nigeria, week 34, 2025.



Key points

- There were 126 suspected cases of Lassa Fever reported from 22 LGAs in 13 states. There were three laboratory confirmed cases and one death was recorded.

Actions

To date:

- National Lassa fever multi-partner, multi-sectoral Technical Working Group (TWG) continues to coordinate the response activities at all levels.
- Providing offsite/onsite support to states.
- Following up on daily reporting and progress with response activities.

Cerebrospinal Meningitis (CSM)

Table 4: Week 34

Suspected cases	Confirmed cases	Deaths	Number of States and LGAs affected
0	0	0	State: 0 LGA: 0

Table 5: CSM Year to date (Week 1 – 34, 2024/2025)

Suspected cases		Confirmed cases		Deaths		CFR	
2024	2025	2024	2025	2024	2025	2024	2025
3,030	3,809	50	262	128	238	4.2%	6.2%

Figure 4: Trend of suspected and confirmed cases of CSM by epidemiological week, 2025.

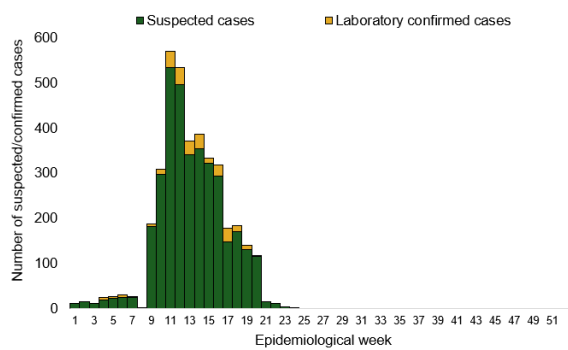
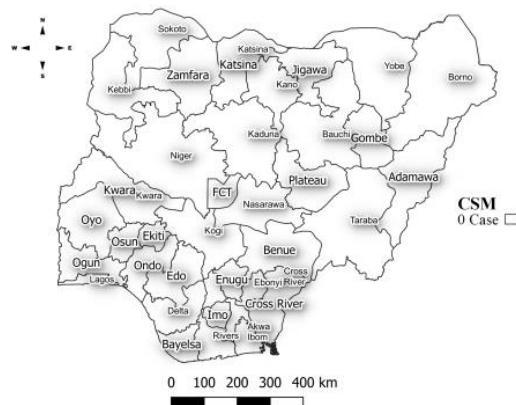


Figure 5: Suspected cases of CSM by State, Nigeria, week 34, 2025.



Key points

- There was no case of Cerebrospinal meningitis (CSM) reported for the week.

Yellow Fever

Table 6: Week 34

Suspected cases	Confirmed cases	Deaths	Number of States and LGAs affected
27	0	0	State: 12 LGA: 21

Table 7: Yellow Fever Year to date (Week 1 – 34, 2024/2025)

Suspected cases		Confirmed cases		Deaths		CFR	
2024	2025	2024	2025	2024	2025	2024	2025
2,042	1,669	17	12	2	5	0.1%	0.3%

Figure 6: Trend of suspected and confirmed cases of Yellow Fever by epidemiological week 34, 2025.

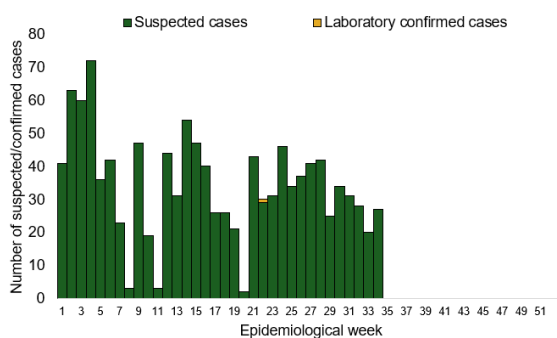
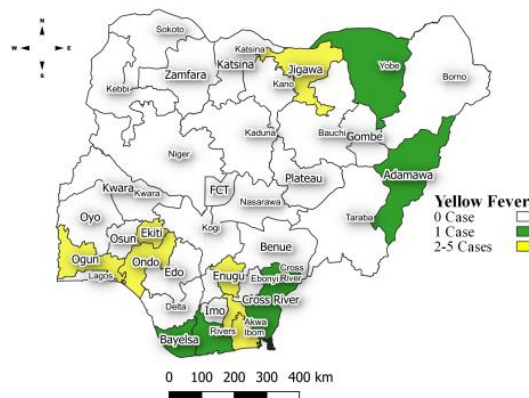


Figure 7: Suspected cases of Yellow Fever by State, Nigeria, week 34, 2025.



Key points

- There were 27 suspected cases of Yellow Fever (YF) reported from 21 LGAs in 12 states. There was no laboratory confirmed case and no death was recorded.

Actions

To date:

- National YF multi-partner Technical Working Group (TWG) continues to coordinate activities across states.
- Surveillance in all states through the routine Integrated Disease Surveillance and Response (IDSR) and Event Based Surveillance (EBS).
- Provided onsite support to Edo State to improve response activities
- Providing offsites to affected support to states.
- Following up on daily reporting and progress with response activities.

Cholera

Table 8: Week 34

Suspected cases	Confirmed cases	Deaths	Number of States and LGAs affected
647	0	17	State: 9 LGA: 26

Table 9: Cholera Year to date (Week 1 – 34, 2024/2025)

Suspected cases		Confirmed cases		Deaths		CFR	
2024	2025	2024	2025	2024	2025	2024	2025
8,729	9,279	147	70	264	232	3%	3%

Figure 8: Trend of suspected and confirmed cases of Cholera by epidemiological week 34, 2025.

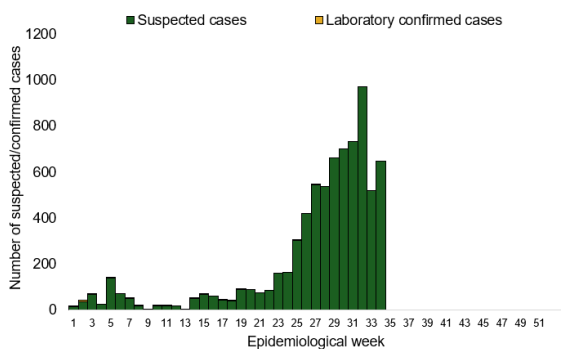
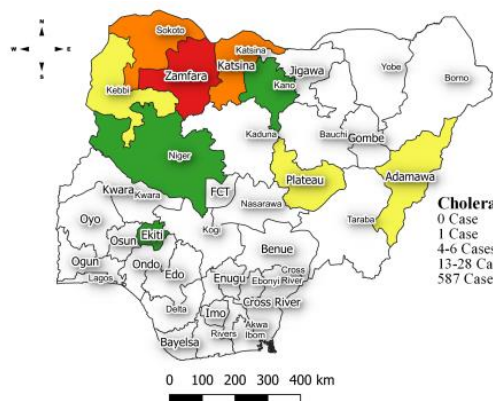


Figure 9: Trend of suspected and confirmed cases of Cholera, week 34, 2025.



Key points

- There were 647 suspected cases of Cholera reported from 26 LGAs in nine states. There was no laboratory confirmed case and 17 deaths were recorded.

Actions

To date:

- National Cholera Multi-Sectoral Technical Working Group (TWG) is monitoring all states and supporting affected states.
- Biweekly EOC Meetings.
- Surveillance in all states through the routine Integrated Disease Surveillance and Response (IDSR)
- Providing offsite/onsite support to states.
- Follow up on daily reporting and progress with response activities.

Measles

Table 10: Week 34

Suspected cases	Confirmed cases	Deaths	Number of States and LGAs affected
7	2	0	State: 3 LGA: 4

Table 11: Measles Year to date (Week 1 – 34, 2024/2025)

Suspected cases		Confirmed cases		Deaths		CFR	
2024	2025	2024	2025	2024	2025	2024	2025
17,508	16,532	9,371	11,380	118	0	0.7%	0%

Figure 10: Trend of suspected and confirmed cases of Measles by epidemiological week 34, 2025.

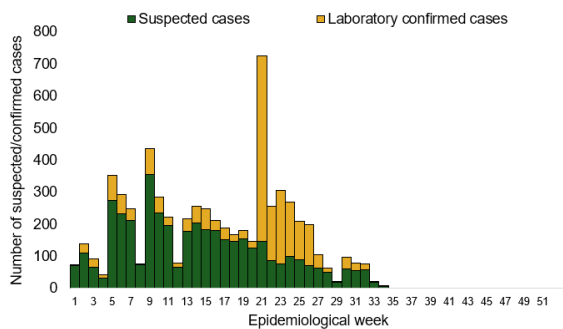
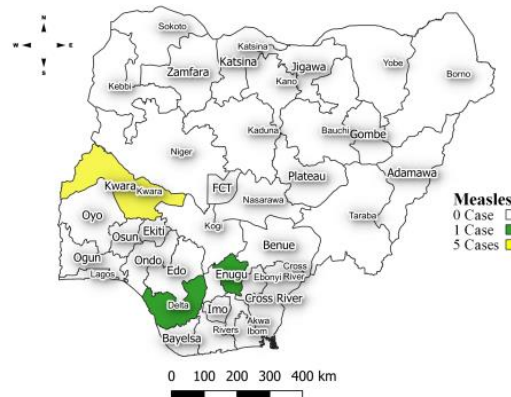


Figure 11: Suspected cases of Measles by State, Nigeria, week 34, 2025.



Key points

- There were seven suspected cases of Measles reported from four LGAs in three states. There were two laboratory confirmed cases and no death was recorded.

Actions

To date:

- National Measles Multi-Sectoral Technical Working Group (TWG) is closely monitoring measles surveillance data and providing feedback to relevant agencies and development partners.
- Harmonisation of laboratory results from across the laboratories.
- Weekly feedback of key performance indicators to measles laboratories.
- Providing offsite/onsite support to states.
- Follow up on daily reporting and progress with response activities.

Mpox

Table 12: Week 34

Suspected cases	Confirmed cases	Deaths	Number of States and LGAs affected
45	25	0	State: 10 LGA: 24

Table 13: Year to date (Week 1 – 34, 2024/2025)

Suspected cases		Confirmed cases		Deaths		CFR	
2024	2025	2024	2025	2024	2025	2024	2025
910	1,099	55	282	0	3	0%	0.3%

Figure 12: Trend of suspected and confirmed cases of Mpox by epidemiological week 34, 2025.

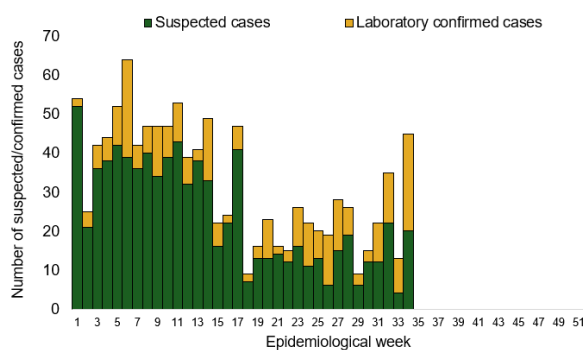
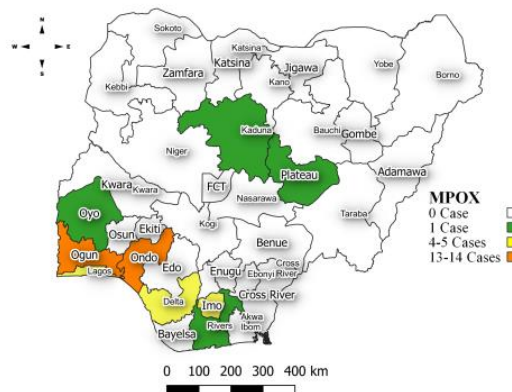


Figure 13: Suspected cases of Mpox by State, Nigeria, week 34, 2025.



Key points

- There were 45 suspected cases of Mpox reported from 24 LGAs in 10 states. There were 25 laboratory confirmed cases and no death was recorded.

Actions

To date:

- National Monkeypox Technical Working Group (TWG) is monitoring activities in all states.
- Weekly EOC meetings.
- Provision of off-site surveillance support to affected States.
- Harmonisation of surveillance and laboratory data from across states and laboratories.

Acute Flaccid Paralysis (AFP)

Table 14: Week 34

Suspected cases	Confirmed cases	Deaths	Number of States and LGAs affected
89	0	0	State: 19 + FCT LGA: 89

Table 15: AFP Year to date (Week 1 – 34, 2024/2025)

Suspected cases		Confirmed cases		Deaths		CFR	
2024	2025	2024	2025	2024	2025	2024	2025
4,505	3,202	0	0	0	0	0%	0%

Figure 14: Trend of suspected and confirmed cases of AFP by epidemiological week 34, 2025.

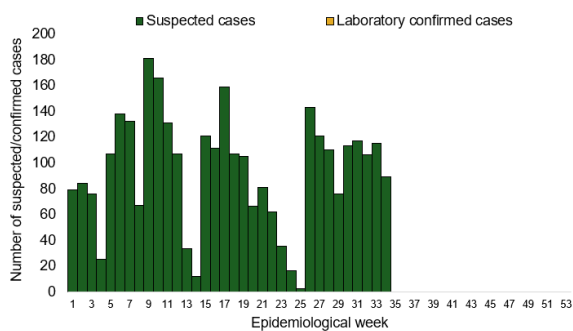
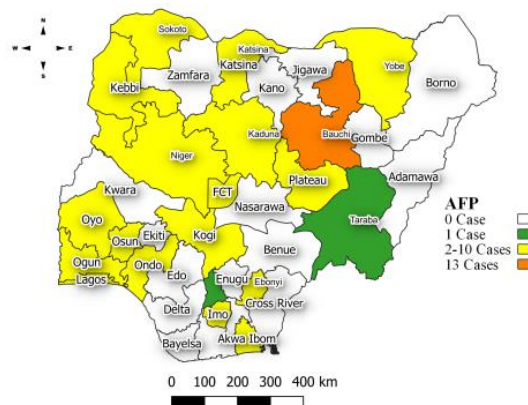


Figure 15: Suspected cases of AFP by State, Nigeria, week 34, 2025.



Key points

- There were 89 suspected cases of AFP reported from 89 LGAs in 19 states and FCT. There was no laboratory confirmed case and no death was recorded.

COVID-19

Table 16: Week 34

Suspected cases	Confirmed cases	Deaths	Number of States and LGAs affected
55	0	0	State: 3 + FCT LGA: 20

Table 17: COVID-19 Year to date (Week 1- 34, 2024/2025)

Suspected cases		Confirmed cases		Deaths		CFR	
2024	2025	2024	2025	2024	2025	2024	2025
1,535	2,335	803	38	1	0	0.1%	0%

Figure 16: Trend of suspected and confirmed cases of COVID-19 by epidemiological week 34, 2025.

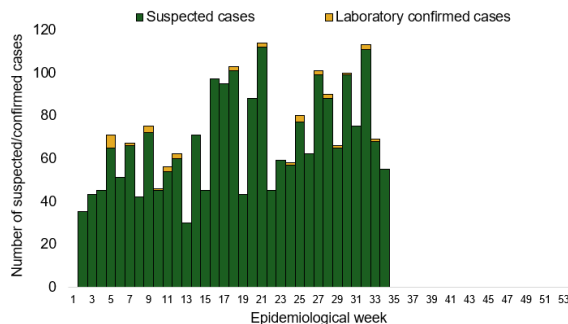
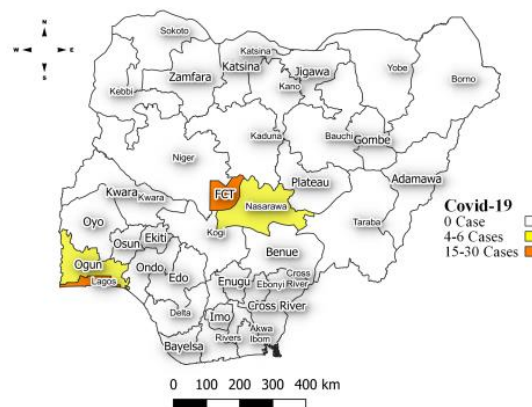


Figure 17: Suspected cases of COVID-19 by State, Nigeria, week 34, 2025.



Key points

- There were 55 suspected cases of COVID-19 reported from 20 LGAs in three states and FCT. There was no laboratory confirmed case and no death was recorded.

Actions

To date:

- National COVID-19 Technical Working Group (TWG) is monitoring activities in all states.
- Harmonisation of surveillance and laboratory data from across states and laboratories.
- Provision of off-site surveillance support to affected States.

Diphtheria

Table 18: Week 34

Suspected cases	Confirmed cases	Deaths	Number of States and LGAs affected
114	105	6	State: 2 LGA: 6

Table 19: Diphtheria Year to date (week 1 – 34, 2024/2025)

Suspected cases		Confirmed cases		Deaths		CFR	
2024	2025	2024	2025	2024	2025	2024	2025
14,500	6,086	9,234	4,164	400	299	2.8%	4.9%

Figure 18: Trend of suspected and confirmed cases of Diphtheria by epidemiological week 34, 2025.

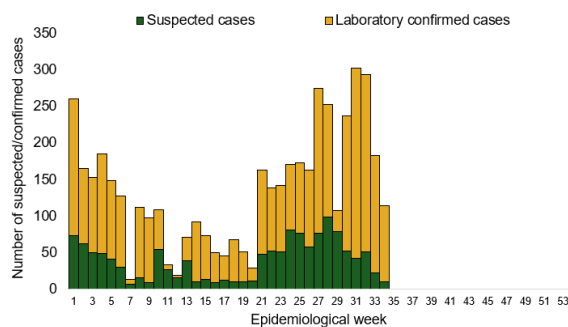
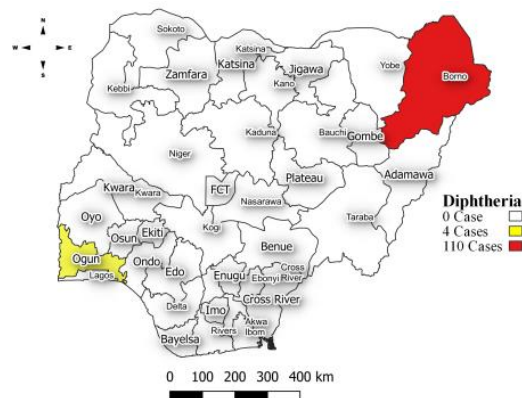


Figure 19: Suspected cases of Diphtheria by State, Nigeria, week 34, 2025.



Key points

- There were 114 suspected cases of Diphtheria reported from six LGAs in two states. There were 105 confirmed cases and six deaths were recorded.

Actions

To date:

- National Diphtheria Technical Working Group (TWG) is monitoring activities in all states.
- Weekly EOC meeting.
- Provide technical and off-site support to states on case identification, reporting, and response, especially to non-reporting and low-burden states.
- Data harmonization with laboratory and case management pillars.

National Influenza Sentinel Surveillance

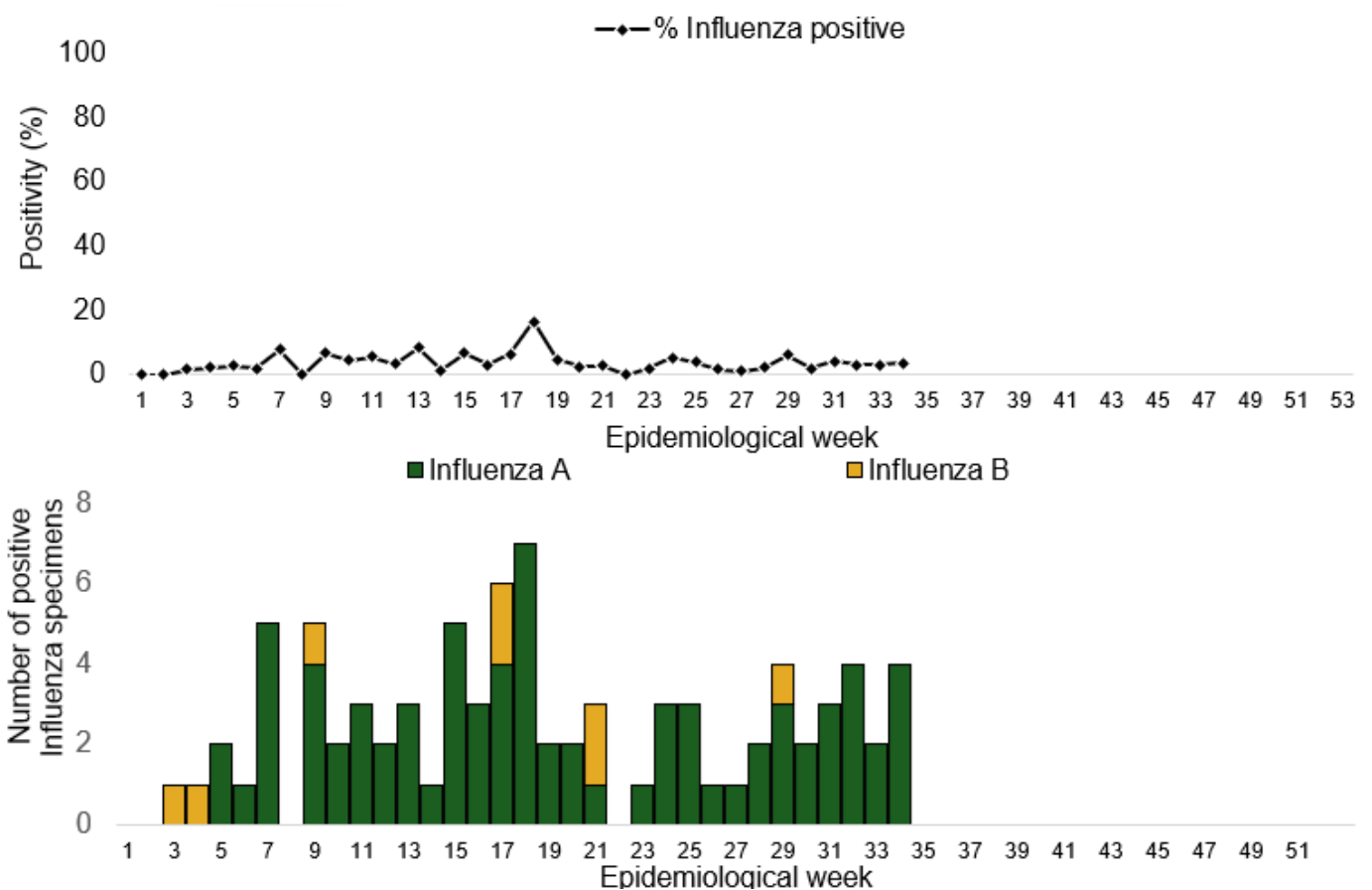
Table 20: Week 34

Suspected cases	Confirmed Cases	Confirmed Case by type	
		Influenza A	Influenza B
110	4	4	0

Table 21: Year to date (week 1 – 34)

Suspected cases	Confirmed Cases	Confirmed Case by type	
		Influenza A	Influenza B
2,526	109	100	9

Figure 20: Number of influenza positive specimens by type and percentage positive by epidemiological week, 2025.



Event Based Surveillance (EBS)

Week 34

Key points

Epi Week 34

- 172 calls were successfully routed to agents and answered.
- Over 816 articles scanned through Epidemic Intelligence from Open Sources (EIOS) and other manual sources.
- From the calls, EIOS, and other manual sources, one signal was picked.

Cumulatively, from week 1 - 34

- 4,228 calls were successfully routed to agents and answered.
- 56 Signals were picked and escalated.

Figure 22: Number of signals/events per week, 2025.

