



Nigeria Centre for Disease Control and Prevention

Protecting the health of Nigerians

Weekly Epidemiological Report

Week 33: 11th – 17th August 2025

Highlight of the week

STRENGTHENING NIGERIA'S ONE HEALTH APPROACH



The National One Health Technical Committee (NOHTC) convened key stakeholders from the human, animal, and environmental health sectors to review progress on previous action points, share updates on ongoing programmes and current outbreaks, and align strategies for health security through coordinated, multisectoral action.

Together, partners are advancing a resilient, data driven One Health system to strengthen prevention, preparedness, and response.

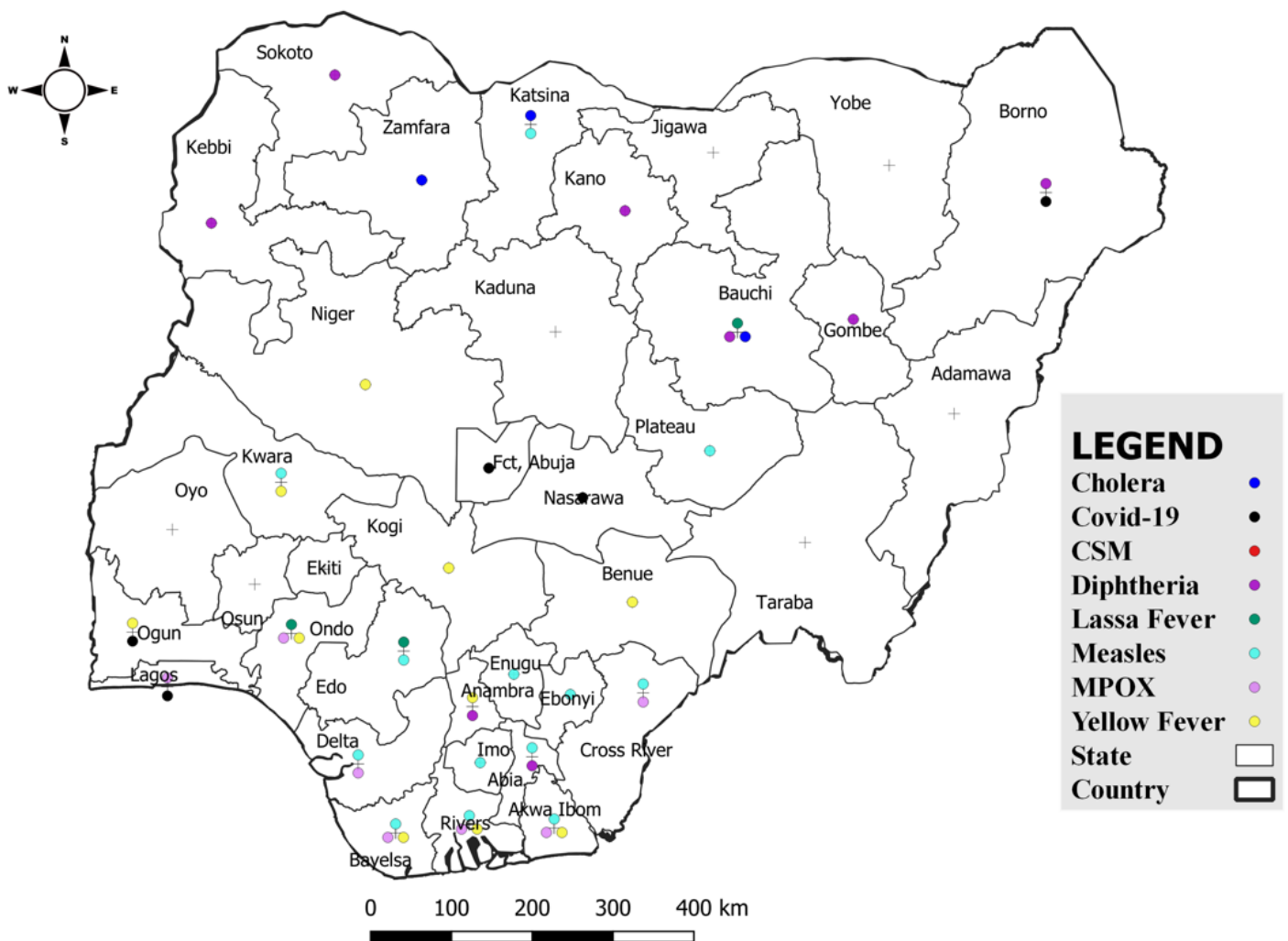
Summary of Incidents

Ongoing incidents
3

The Ongoing incidents within the reporting week are Cholera, Mpox and Diphtheria.

*Ongoing incidents are defined as confirmed cases where a national EOC or equivalent has been activated.

Figure 1: Priority Diseases under surveillance in Nigeria, week 33, 2025.



Summary of Diseases

Table 1: Week 33 (11th – 17th August 2025)

Lassa Fever ₁	Cerebrospinal Meningitis (CSM) ₂	Yellow Fever ₂
94 Suspected case(s)	0 Suspected case(s)	20 Suspected case(s)
5 Confirmed case(s)	0 Confirmed case(s)	0 Confirmed case(s)
0 Death(s)	0 Death(s)	0 Death(s)
Cholera ₂	Measles ₂	Mpox ₂
519 Suspected case(s)	22 Suspected case(s)	13 Suspected case(s)
0 Confirmed case(s)	4 Confirmed case(s)	9 Confirmed case(s)
19 Death(s)	0 Death(s)	0 Death(s)
Acute Flaccid Paralysis (AFP) ₂	COVID-19 ₂	Diphtheria ₂
115 Suspected case(s)	69 Suspected case(s)	182 Suspected case(s)
0 Confirmed case(s)	1 Confirmed case(s)	160 Confirmed case(s)
0 Death(s)	0 Death(s)	12 Death(s)
National Sentinel influenza surveillance ₃		
69 Suspected case(s)		
2 Confirmed case(s)		

Information for all the diseases was retrieved from the Technical Working Group and Situation Reports of Nigerian Centre for Disease Control and Prevention

1. Case Fatality Rate (CFR) for this disease is reported for confirmed cases only.

2. CFR for this disease is reported for total cases i.e. suspected + confirmed.

3. Information for sentinel influenza was retrieved from the laboratory.

Lassa Fever

Table 1: Week 33

Suspected cases	Confirmed cases	Deaths	Number of States and LGAs affected
94	5	0	State: 12 + FCT LGA: 15

Table 2: Lassa Fever Year to date (week 1 – 33, 2024/2025)

Suspected cases		Confirmed cases		Deaths		CFR	
2024	2025	2024	2025	2024	2025	2024	2025
7,892	7,033	979	854	168	159	17.2%	18.6%

Figure 2: Trend of suspected and confirmed cases of Lassa Fever by epidemiological week, 2025.

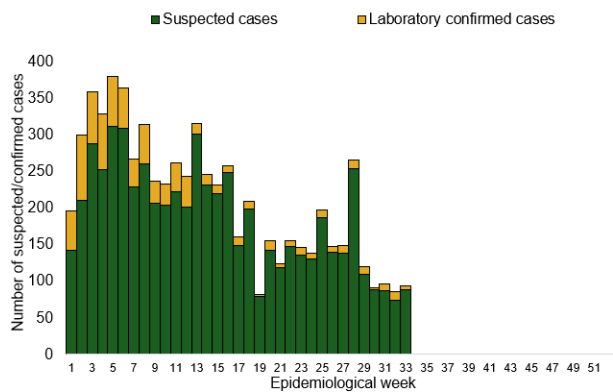
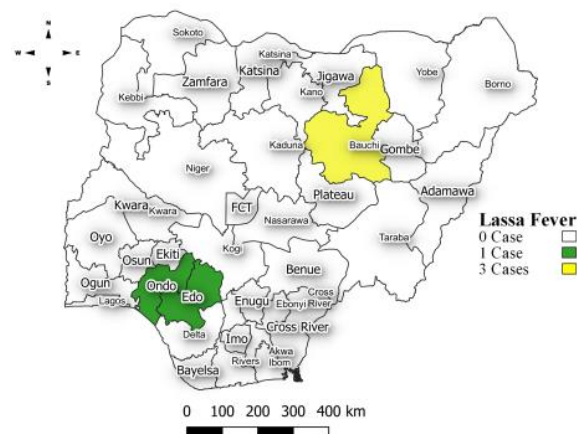


Figure 3: **Confirmed** cases of Lassa Fever by State, Nigeria, week 33, 2025.



Key points

- There were 94 suspected cases of Lassa Fever reported from 15 LGAs in 12 states and FCT. There were five laboratory confirmed cases and no death was recorded.

Actions

To date:

- National Lassa fever multi-partner, multi-sectoral Technical Working Group (TWG) continues to coordinate the response activities at all levels.
- Providing offsite/onsite support to states.
- Following up on daily reporting and progress with response activities.

Cerebrospinal Meningitis (CSM)

Table 4: Week 33

Suspected cases	Confirmed cases	Deaths	Number of States and LGAs affected
0	0	0	State: 0 LGA: 0

Table 5: CSM Year to date (week 1 – 33, 2024/2025)

Suspected cases		Confirmed cases		Deaths		CFR	
2024	2025	2024	2025	2024	2025	2024	2025
3,030	3,809	50	262	128	238	4.2%	6.2%

Figure 4: Trend of suspected and confirmed cases of CSM by epidemiological week, 2025.

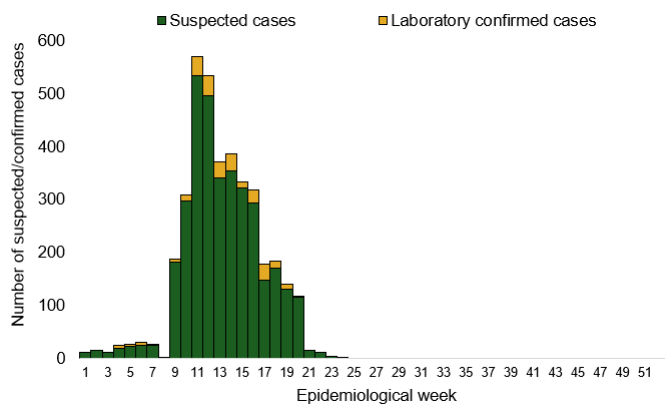
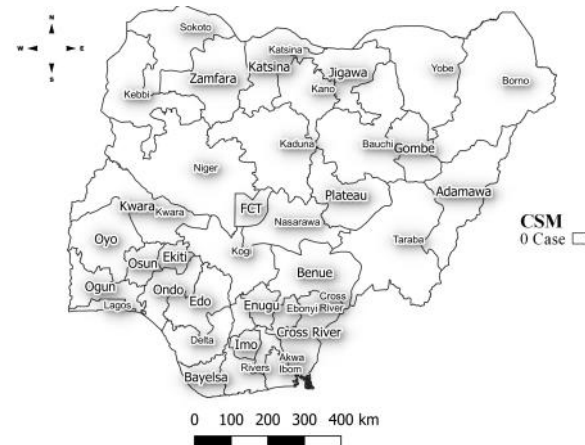


Figure 5: Suspected cases of CSM by State, Nigeria, week 33, 2025.



Key points

- There was no case of Cerebrospinal meningitis (CSM) reported for the week.

Yellow Fever

Table 6: Week 33

Suspected cases	Confirmed cases	Deaths	Number of States and LGAs affected
20	0	0	State: 10 LGA: 15

Table 7: Yellow Fever Year to date (week 1 – 33, 2024/2025)

Suspected cases		Confirmed cases		Deaths		CFR	
2024	2025	2024	2025	2024	2025	2024	2025
1,996	1,589	16	10	2	5	0.1%	0.3%

Figure 6: Trend of suspected and confirmed cases of Yellow Fever by epidemiological week, 2025.

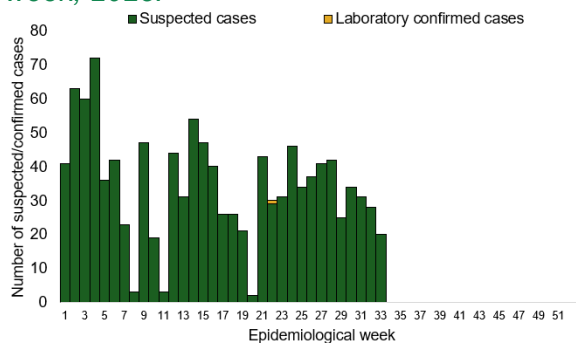
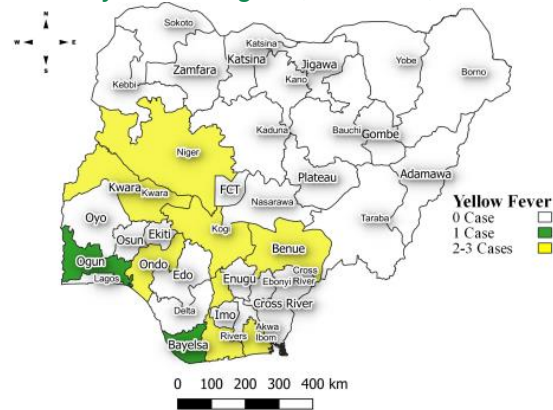


Figure 7: Suspected cases of Yellow Fever by State, Nigeria, week 33, 2025.



Key points

- There were 20 suspected cases of Yellow Fever (YF) reported from 15 LGAs in 10 states. There was no laboratory confirmed case and no death was recorded.

Actions

To date:

- National YF multi-partner Technical Working Group (TWG) continues to coordinate activities across states.
- Surveillance in all states through the routine Integrated Disease Surveillance and Response (IDSR) and Event Based Surveillance (EBS).
- Providing onsite support to Edo state and offsite support to other affected states.
- Following up on daily reporting and progress with response activities.

Cholera

Table 8: Week 33

Suspected cases	Confirmed cases	Deaths	Number of States and LGAs affected
519	0	19	State: 3 LGA: 12

Table 9: Cholera Year to date (week 1 – 33, 2024/2025)

Suspected cases		Confirmed cases		Deaths		CFR	
2024	2025	2024	2025	2024	2025	2024	2025
8,136	8,367	138	52	240	204	2.9%	2.4%

Figure 8: Trend of suspected and confirmed cases of Cholera by epidemiological week, 2025.

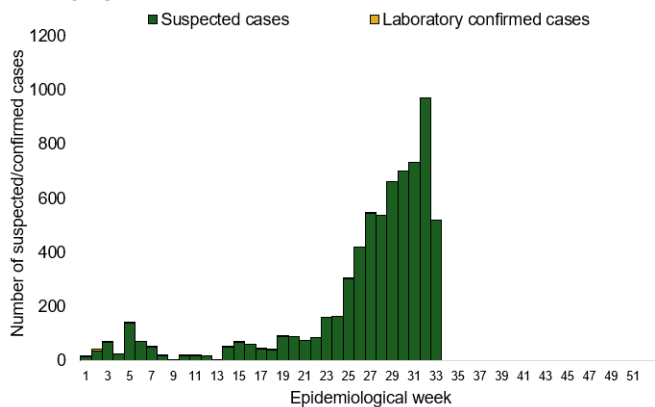
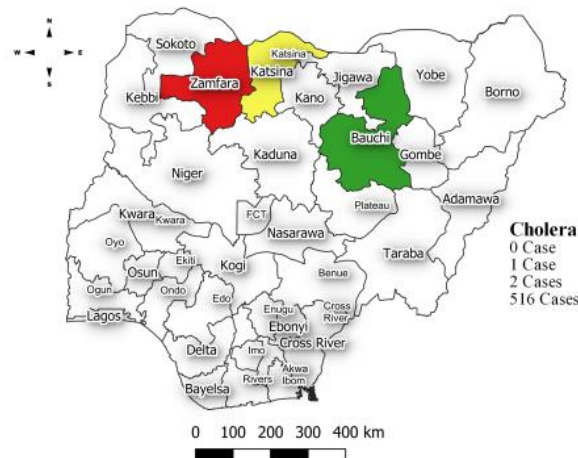


Figure 9: Trend of suspected and confirmed cases of Cholera, week 33, 2025.



Key points

- There were 519 suspected cases of Cholera reported from 12 LGAs in three states. There was no laboratory confirmed case and 19 deaths were recorded.

Actions

To date:

- National Cholera Multi-Sectoral Technical Working Group (TWG) is monitoring all states and supporting affected states.
- Biweekly EOC Meetings.
- Surveillance in all states through the routine Integrated Disease Surveillance and Response (IDSR)
- Providing offsite/onsite support to states.
- Follow up on daily reporting and progress with response activities.

Measles

Table 10: Week 33

Suspected cases	Confirmed cases	Deaths	Number of States and LGAs affected
22	4	0	State: 12 LGA: 19

Table 11: Measles Year to date (week 1 – 33, 2024/2025)

Suspected cases		Confirmed cases		Deaths		CFR	
2024	2025	2024	2025	2024	2025	2024	2025
17,348	16,525	2,262	11,378	118	0	0.7%	0%

Figure 10: Trend of suspected and confirmed cases of Measles by epidemiological week, 2025.

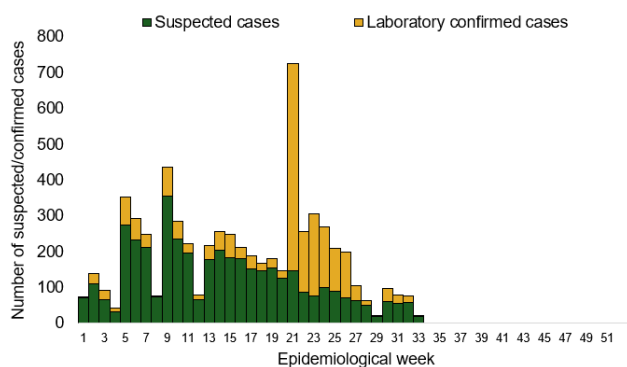
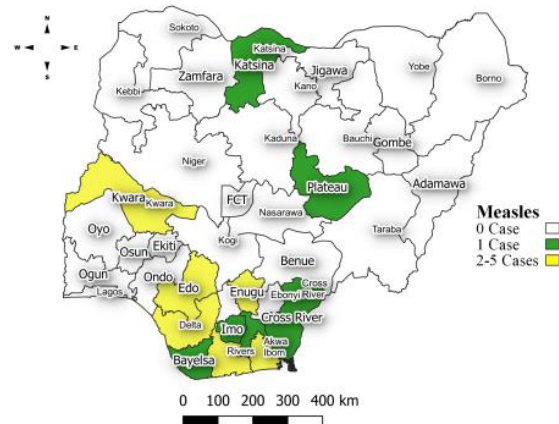


Figure 11: Suspected cases of Measles by State, Nigeria, week 33, 2025.



Key points

- There were 22 suspected cases of Measles reported from 19 LGAs in 12 states. There were four laboratory confirmed cases and no death was recorded.

Actions

To date:

- National Measles Multi-Sectoral Technical Working Group (TWG) is closely monitoring measles surveillance data and providing feedback to relevant agencies and development partners.
- Harmonisation of laboratory results from across the laboratories.
- Weekly feedback of key performance indicators to measles laboratories.
- Providing offsite/onsite support to states.
- Follow up on daily reporting and progress with response activities.

Mpox

Table 12: Week 33

Suspected cases	Confirmed cases	Deaths	Number of States and LGAs affected
13	9	0	State: 7 LGA: 13

Table 13: Year to date (week 1 – 33, 2024/2025)

Suspected cases		Confirmed cases		Deaths		CFR	
2024	2025	2024	2025	2024	2025	2024	2025
842	1,054	45	257	0	3	0%	0.3%

Figure 12: Trend of suspected and confirmed cases of Mpox by epidemiological week, 2025.

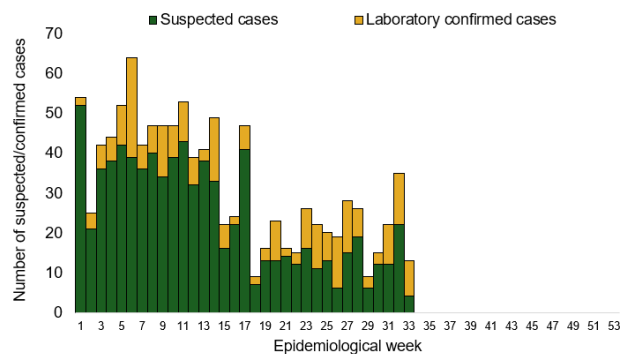
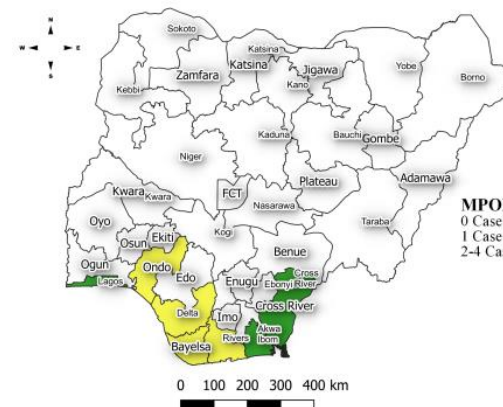


Figure 13: Suspected cases of Mpox by State, Nigeria, week 33, 2025.



Key points

- There were 13 suspected cases of Mpox reported from 13 LGAs in seven states. There were nine laboratory confirmed cases and no death was recorded.

Actions

To date:

- National Monkeypox Technical Working Group (TWG) is monitoring activities in all states.
- Weekly EOC meetings.
- Provision of off-site surveillance support to affected States.
- Harmonisation of surveillance and laboratory data from across states and laboratories.

Acute Flaccid Paralysis (AFP)

Table 14: Week 33

Suspected cases	Confirmed cases	Deaths	Number of States and LGAs affected
115	0	0	State: 27 + FCT LGA: 115

Table 15: AFP Year to date (week 1 – 33, 2024/2025)

Suspected cases		Confirmed cases		Deaths		CFR	
2024	2025	2024	2025	2024	2025	2024	2025
4,413	3,513	0	0	0	0	0%	0%

Figure 14: Trend of suspected and confirmed cases of AFP by epidemiological week, 2025.

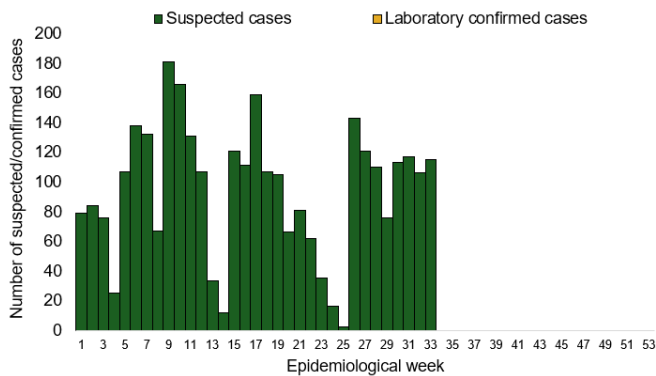
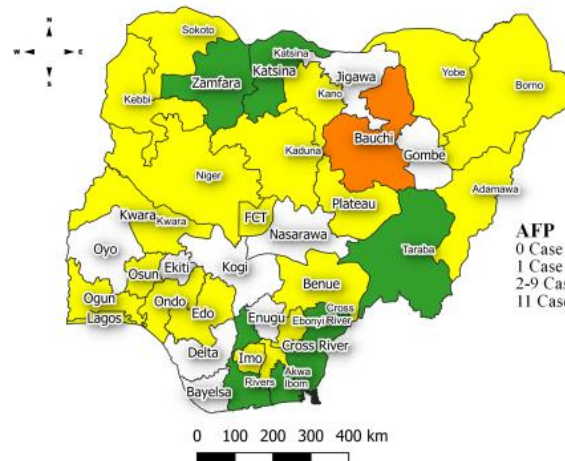


Figure 15: Suspected cases of AFP by State, Nigeria, week 33, 2025.



Key points

- There were 115 suspected cases of AFP reported from 115 LGAs in 27 states and FCT. There was no laboratory confirmed case and no death was recorded.

COVID-19

Table 16: Week 33

Suspected cases	Confirmed cases	Deaths	Number of States and LGAs affected
69	1	0	State: 4 + FCT LGA: 19

Table 17: COVID-19 Year to date (Week 1- 33, 2024/2025)

Suspected cases		Confirmed cases		Deaths		CFR	
2024	2025	2024	2025	2024	2025	2024	2025
1,458	2,280	802	38	1	0	0.1%	0%

Figure 16: Trend of suspected and confirmed cases of COVID-19 by epidemiological week, 2025.

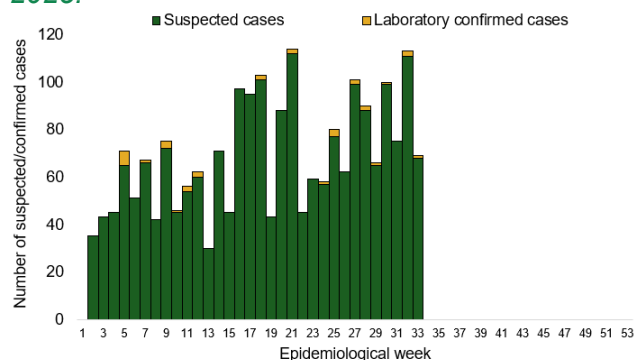
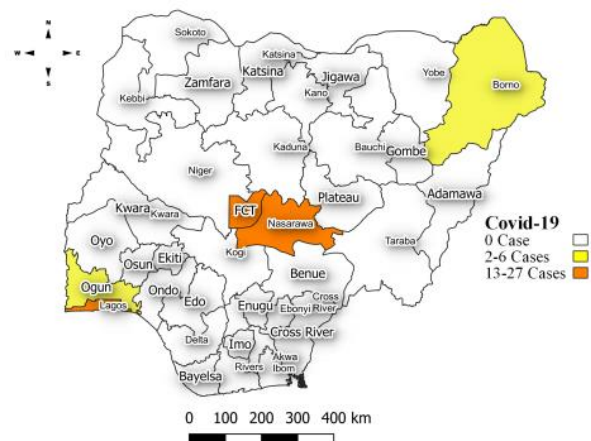


Figure 17: Suspected cases of COVID-19 by State, Nigeria, week 33, 2025.



Key points

- There were 69 suspected cases of COVID-19 reported from 19 LGAs in four states and FCT. There was one laboratory confirmed case and no death was recorded.

Actions

To date:

- National COVID-19 Technical Working Group (TWG) is monitoring activities in all states.
- Harmonisation of surveillance and laboratory data from across states and laboratories.
- Provision of off-site surveillance support to affected States.

Diphtheria

Table 18: Week 33

Suspected cases	Confirmed cases	Deaths	Number of States and LGAs affected
182	160	12	State: 8 LGA: 17

Table 19: Diphtheria Year to date (week 1 – 33, 2024/2025)

Suspected cases		Confirmed cases		Deaths		CFR	
2024	2025	2024	2025	2024	2025	2024	2025
13,980	5,972	8,955	4,059	387	293	2.8%	4.9%

Figure 18: Trend of suspected and confirmed cases of Diphtheria by epidemiological week, 2025.

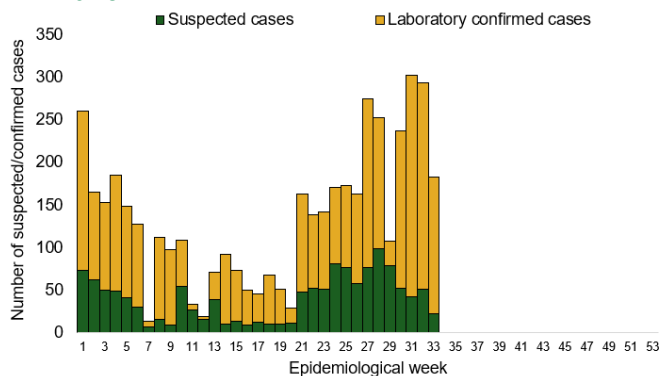
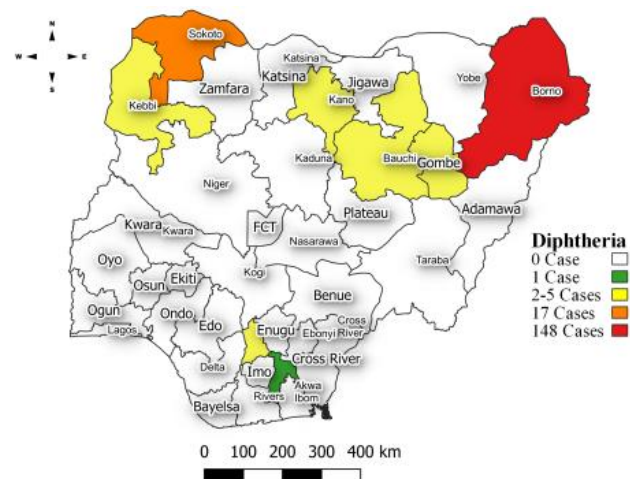


Figure 19: Suspected cases of Diphtheria by State, Nigeria, week 33, 2025.



Key points

- There were 182 suspected cases of Diphtheria reported from 17 LGAs in eight states. There were 160 confirmed cases and 12 deaths were recorded.

Actions

To date:

- National Diphtheria Technical Working Group (TWG) is monitoring activities in all states.
- Weekly EOC meeting.
- Provide technical and off-site support to states on case identification, reporting, and response, especially to non-reporting and low-burden states.
- Data harmonization with laboratory and case management pillars.

National Influenza Sentinel Surveillance

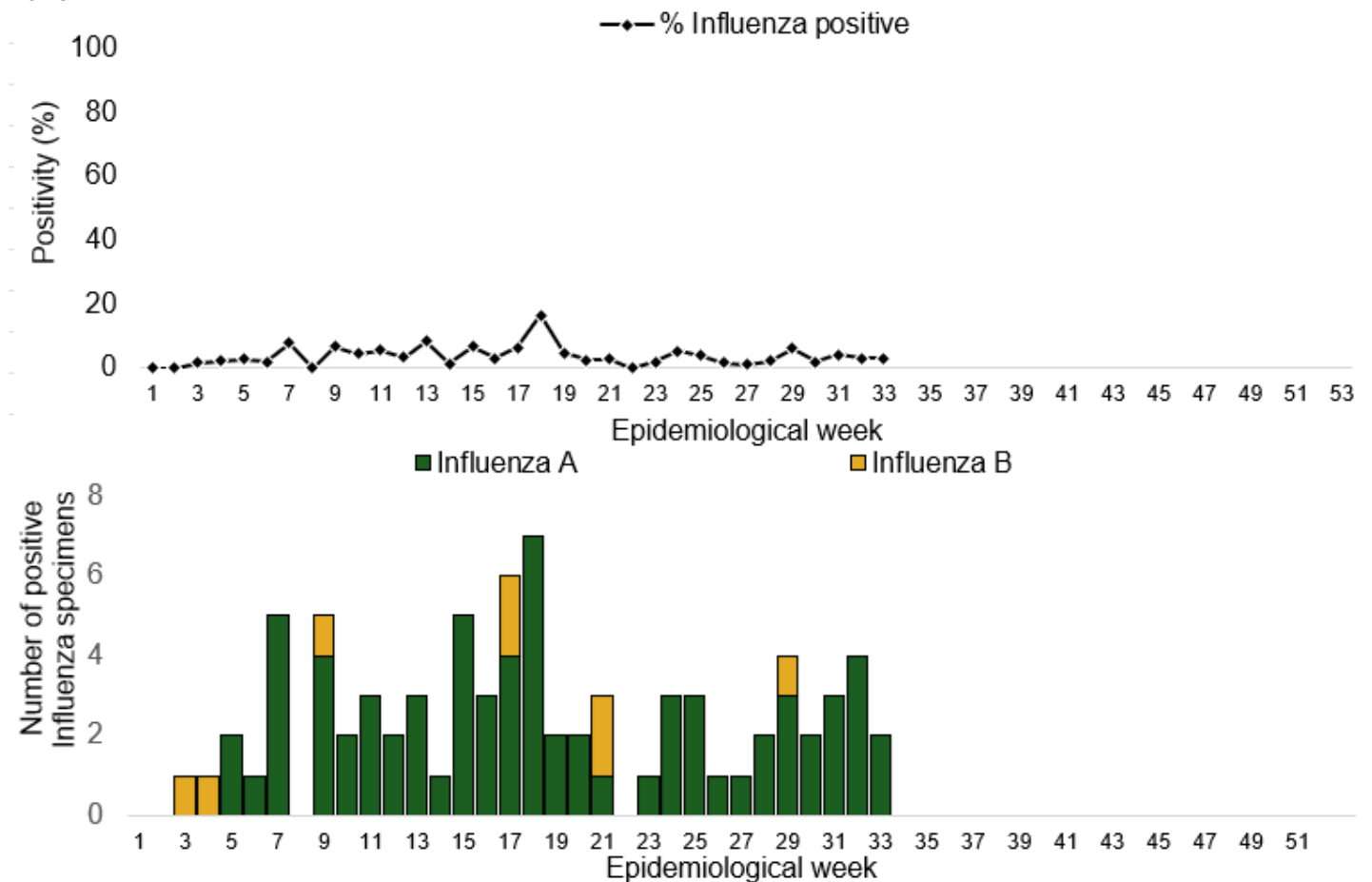
Table 30: Week 33

Suspected cases	Confirmed Cases	Confirmed Cases by type	
		Influenza A	Influenza B
		69	2

Table 21: Year to date (week 1 – 33)

Suspected Cases	Confirmed Cases	Confirmed Case by type	
		Influenza A	Influenza B
2,398	105	96	9

Figure 20: Number of influenza positive specimens by type and percentage positive by epidemiological week, 2025.



Event Based Surveillance (EBS)

Week 33

Key points

Epi Week 33

- 213 calls were successfully routed to agents and answered.
- Over 1,210 articles scanned through Epidemic Intelligence from Open Sources (EIOS) and other manual sources.
- From the calls, EIOS, and other manual sources, one signal was picked.

Cumulatively, from week 1 - 33

- 4,206 calls were successfully routed to agents and answered.
- 54 Signals were picked and escalated.

Total Vacc.	Total Cov.
129,392	52.8
38,546	94.6
20,787	27.2
29,718	45.2
46,706	53.8
6,042	30.0
81,212	27.3
61,947	32.6
16,283	36.2
71,248	42.6
22,345	31.3
22,348	58.9
40,346	40.2
586,920	40.6

Figure 22: Number of signals/events per week, 2025.

