



Nigeria Centre for Disease Control and Prevention

Protecting the health of Nigerians

Weekly Epidemiological Report

Week 32: 4th – 10th August 2025

Highlight of the week

BUILDING A RESILIENT HEALTH SYSTEM: NCDC & USCDC DEEPEN COLLABORATION



The Nigeria Centre for Disease Control and Prevention (NCDC) leadership engaged with the United States Centers for Disease Control and Prevention (USCDC) to strengthen Nigeria's public health capacity.

Discussions focused on boosting laboratory capacity with emphasis on genomic sequencing, expanding Public Health Emergency Management (PHEM) training nationwide, and enhancing real-time surveillance for vaccine-preventable disease (VPD) outbreaks.

The USCDC reaffirmed its commitment to data-driven action and capacity building, supporting NCDC in protecting the health of all Nigerians.

Summary of Incidents

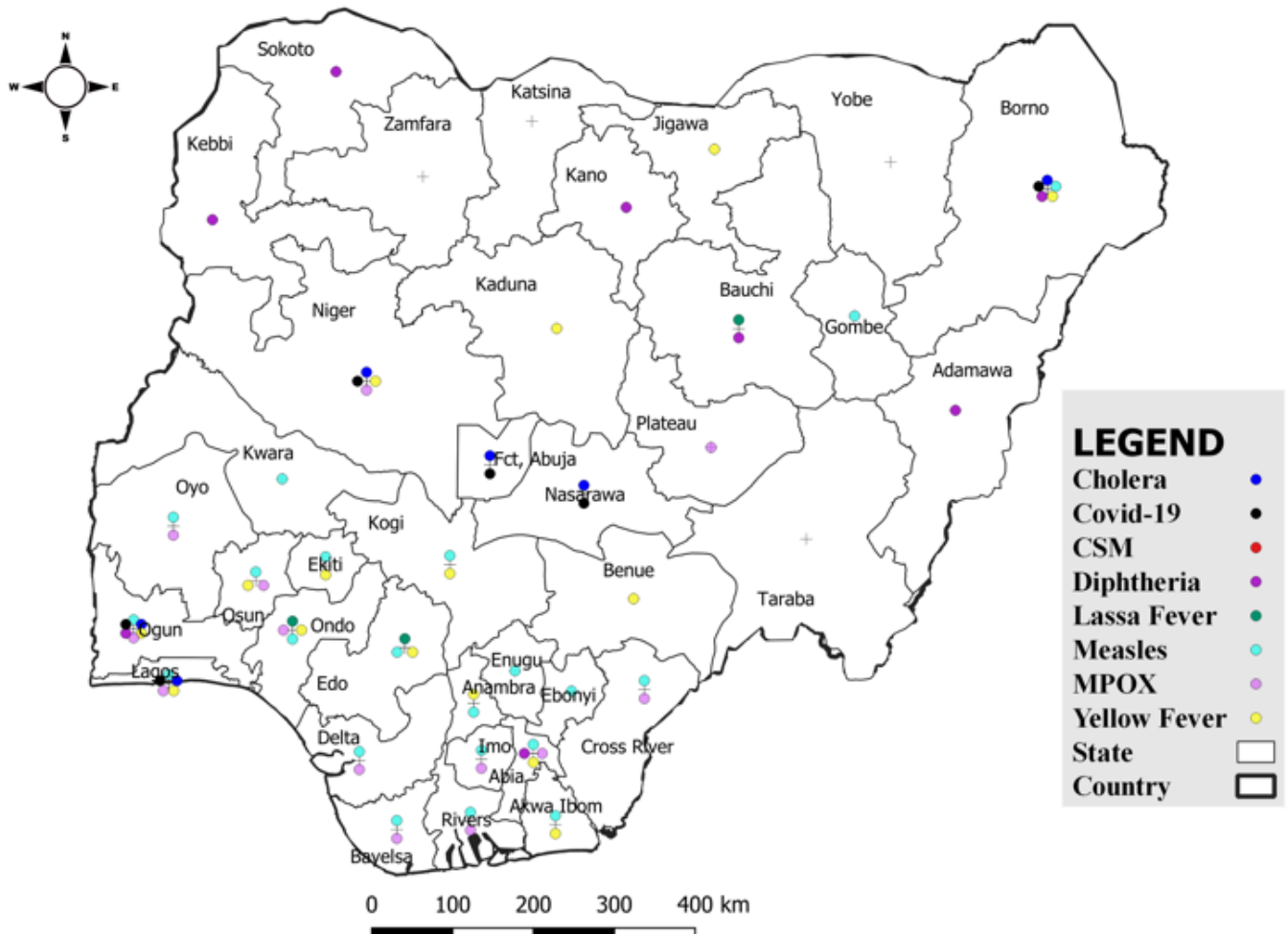
Ongoing incidents

3

The Ongoing incidents within the reporting week are Cholera, Mpox and Diphtheria.

**Ongoing incidents are defined as confirmed cases where a national EOC or equivalent has been activated.*

Figure 1: Priority Diseases under surveillance in Nigeria, week 32, 2025.



Summary of Diseases

Table 1: Week 32 (4th – 10th August 2025)

Lassa Fever ₁	Cerebrospinal Meningitis (CSM) ₂	Yellow Fever ₂
86 Suspected case(s)	0 Suspected case(s)	28 Suspected case(s)
12 Confirmed case(s)	0 Confirmed case(s)	0 Confirmed case(s)
3 Death(s)	0 Death(s)	0 Death(s)
Cholera ₂	Measles ₂	Mpox ₂
970 Suspected case(s)	77 Suspected case(s)	35 Suspected case(s)
0 Confirmed case(s)	20 Confirmed case(s)	13 Confirmed case(s)
18 Death(s)	0 Death(s)	0 Death(s)
Acute Flaccid Paralysis (AFP) ₂	COVID-19 ₂	Diphtheria ₂
106 Suspected case(s)	113 Suspected case(s)	293 Suspected case(s)
0 Confirmed case(s)	2 Confirmed case(s)	243 Confirmed case(s)
0 Death(s)	0 Death(s)	34 Death(s)
National Sentinel influenza surveillance ₃		
134 Suspected case(s)		
4 Confirmed case(s)		

Information for all the diseases was retrieved from the Technical Working Group and Situation Reports of Nigerian Centre for Disease Control and Prevention

1. Case Fatality Rate (CFR) for this disease is reported for confirmed cases only.

2. CFR for this disease is reported for total cases i.e. suspected + confirmed.

3. Information for sentinel influenza was retrieved from the laboratory.

Lassa Fever

Table 1: Week 32

Suspected cases	Confirmed cases	Deaths	Number of States and LGAs affected
86	12	3	State: 6 + FCT LGA: 18

Table 2: Lassa Fever Year to date (week 1 – 32, 2024/2025)

Suspected cases		Confirmed cases		Deaths		CFR	
2024	2025	2024	2025	2024	2025	2024	2025
7,767	6,939	971	849	166	159	17.1%	18.7%

Figure 2: Trend of suspected and confirmed cases of Lassa Fever by epidemiological week, 2025.

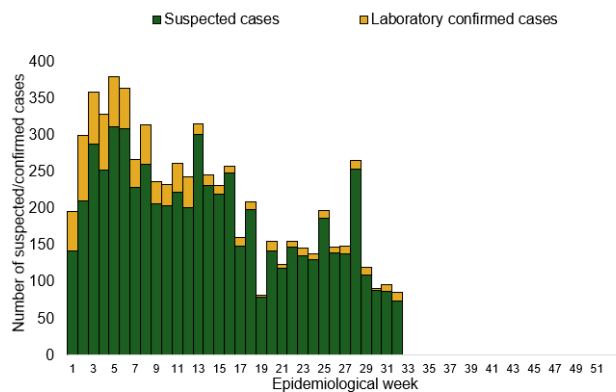
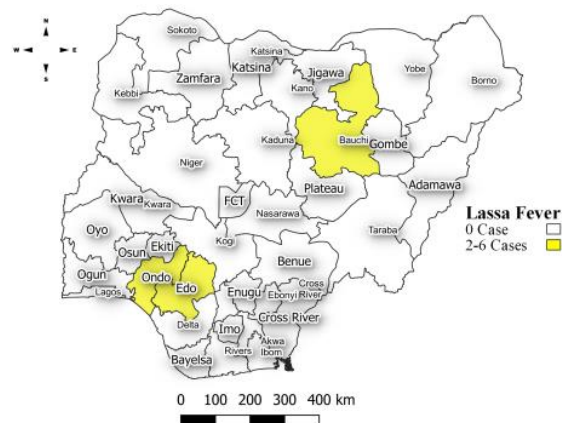


Figure 3: **Confirmed** cases of Lassa Fever by State, Nigeria, week 32, 2025.



Key points

- There were 86 suspected cases of Lassa Fever reported from 18 LGAs in six states and FCT. There were 12 laboratory confirmed cases and three deaths were recorded.

Actions

To date:

- National Lassa fever multi-partner, multi-sectoral Technical Working Group (TWG) continues to coordinate the response activities at all levels.
- Providing offsite/onsite support to states.
- Following up on daily reporting and progress with response activities.

Cerebrospinal Meningitis (CSM)

Table 4: Week 32

Suspected cases	Confirmed cases	Deaths	Number of States and LGAs affected
0	0	0	State: 0 LGA: 0

Table 5: CSM Year to date (week 1 – 32, 2024/2025)

Suspected cases		Confirmed cases		Deaths		CFR	
2024	2025	2024	2025	2024	2025	2024	2025
3,026	3,809	50	262	128	238	4.2%	6.2%

Figure 4: Trend of suspected and confirmed cases of CSM by epidemiological week, 2025.

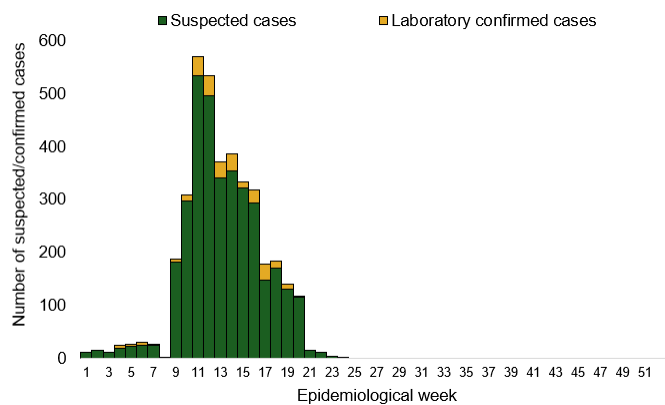
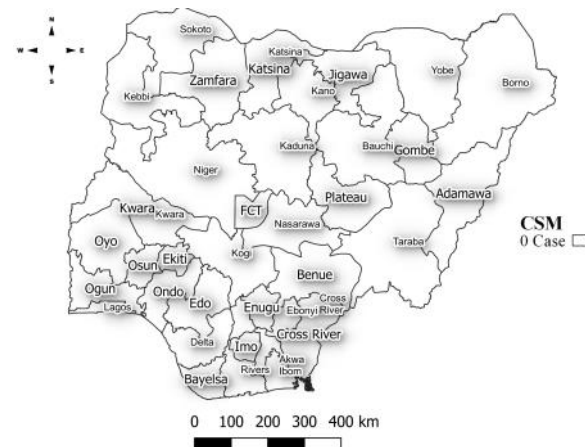


Figure 5: Suspected cases of CSM by State, Nigeria, week 32, 2025.



Key points

- There was no case of Cerebrospinal meningitis (CSM) reported for the week.

Yellow Fever

Table 6: Week 32

Suspected cases	Confirmed cases	Deaths	Number of States and LGAs affected
28	0	0	State: 15 LGA: 21

Table 7: Yellow Fever Year to date (week 1 – 32, 2024/2025)

Suspected cases		Confirmed cases		Deaths		CFR	
2024	2025	2024	2025	2024	2025	2024	2025
1,939	1,569	14	10	2	5	0.1%	0.3%

Figure 6: Trend of suspected and confirmed cases of Yellow Fever by epidemiological week, 2025.

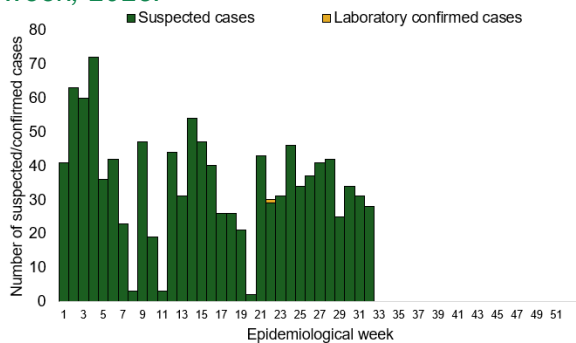
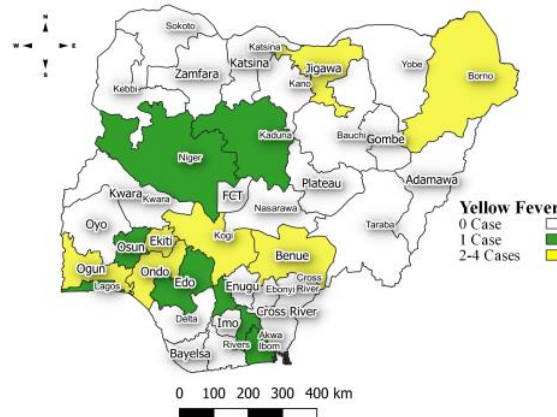


Figure 7: Suspected cases of Yellow Fever by State, Nigeria, week 32, 2025.



Key points

- There were 28 suspected cases of Yellow Fever (YF) reported from 21 LGAs in 15 states. There was no laboratory confirmed case and no death was recorded.

Actions

To date:

- National YF multi-partner Technical Working Group (TWG) continues to coordinate activities across states.
- Surveillance in all states through the routine Integrated Disease Surveillance and Response (IDSR)
- Providing onsite support to Edo states and offsite support to other affected states.
- Following up on daily reporting and progress with response activities.

Cholera

Table 8: Week 32

Suspected cases	Confirmed cases	Deaths	Number of States and LGAs affected
970	0	18	State: 7 LGA: 25

Table 9: Cholera Year to date (week 1 – 32, 2024/2025)

Suspected cases		Confirmed cases		Deaths		CFR	
2024	2025	2024	2025	2024	2025	2024	2025
7,542	7,848	120	52	211	185	2.8%	2.4%

Figure 8: Trend of suspected and confirmed cases of Cholera by epidemiological week, 2025.

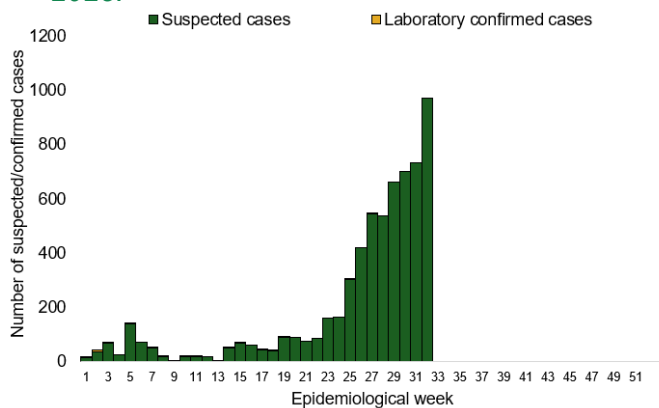
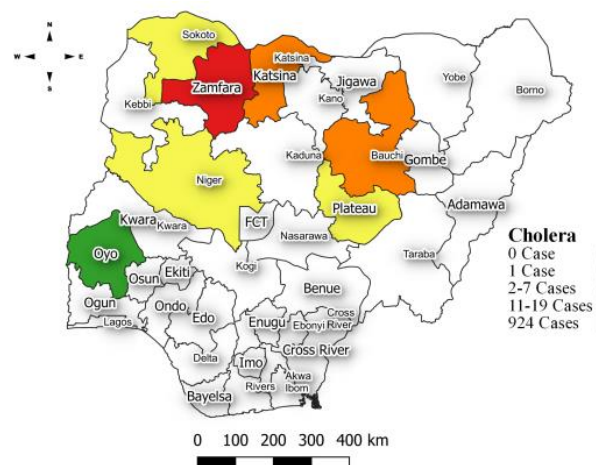


Figure 9: Trend of suspected and confirmed cases of Cholera, week 32, 2025.



Key points

- There were 970 suspected cases of Cholera reported from 25 LGAs in five states. There was no laboratory confirmed case and 18 deaths were recorded.

Actions

To date:

- National Cholera Multi-Sectoral Technical Working Group (TWG) is monitoring all states and supporting affected states.
- Biweekly EOC Meetings.
- Surveillance in all states through the routine Integrated Disease Surveillance and Response (IDSR)
- Providing offsite/onsite support to states.
- Follow up on daily reporting and progress with response activities.

Measles

Table 10: Week 32

Suspected cases	Confirmed cases	Deaths	Number of States and LGAs affected
77	20	0	State: 21 LGA: 49

Table 11: Measles Year to date (week 1 – 32, 2024/2025)

Suspected cases		Confirmed cases		Deaths		CFR	
2024	2025	2024	2025	2024	2025	2024	2025
17,165	16,503	9,250	11,374	114	0	0.7%	0%

Figure 10: Trend of suspected and confirmed cases of Measles by epidemiological week, 2025.

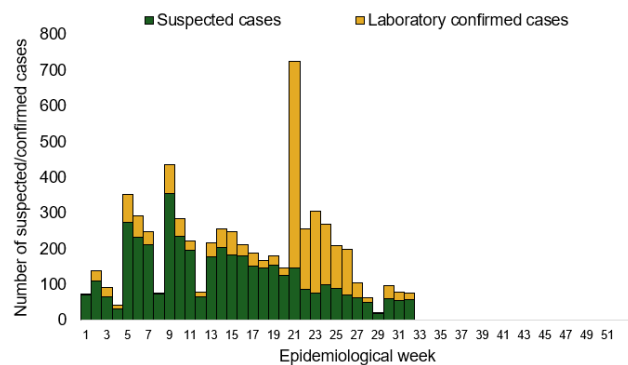
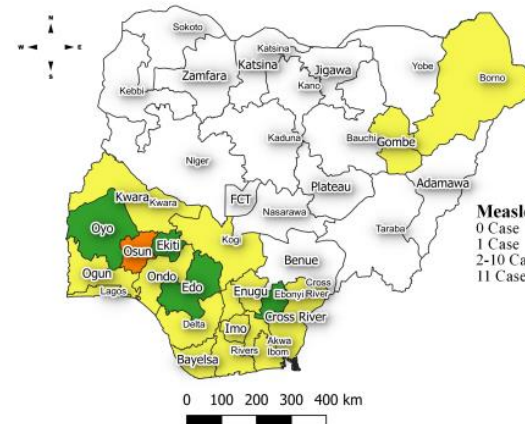


Figure 11: Suspected cases of Measles by State, Nigeria, week 32, 2025.



Key points

- There were 77 suspected cases of Measles reported from 49 LGAs in 21 states. There were 20 laboratory confirmed cases and no death was recorded.

Actions

To date:

- National Measles Multi-Sectoral Technical Working Group (TWG) is closely monitoring measles surveillance data and providing feedback to relevant agencies and development partners.
- Harmonisation of laboratory results from across the laboratories.
- Weekly feedback of key performance indicators to measles laboratories.
- Providing offsite/onsite support to states.
- Follow up on daily reporting and progress with response activities.

Mpox

Table 12: Week 32

Suspected cases	Confirmed cases	Deaths	Number of States and LGAs affected
35	13	0	State: 13 LGA: 20

Table 13: Year to date (week 1 – 32, 2024/2025)

Suspected cases		Confirmed cases		Deaths		CFR	
2024	2025	2024	2025	2024	2025	2024	2025
817	1,041	44	248	0	3	0%	0.3%

Figure 12: Trend of suspected and confirmed cases of Mpox by epidemiological week, 2025.

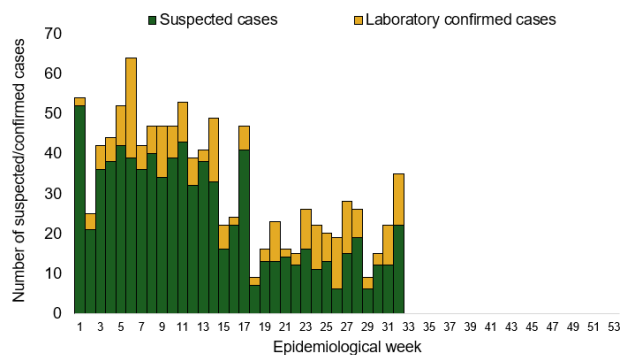
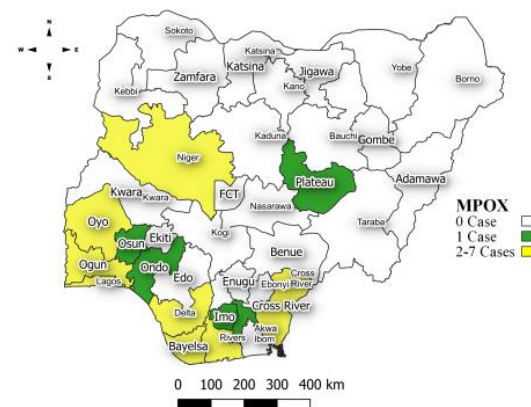


Figure 13: Suspected cases of Mpox by State, Nigeria, week 32, 2025.



Key points

- There were 35 suspected cases of Mpox reported from 20 LGAs in 13 states. There were 13 laboratory confirmed cases and no death was recorded.

Actions

To date:

- National Monkeypox Technical Working Group (TWG) is monitoring activities in all states.
- Weekly EOC meetings.
- Provision of off-site surveillance support to affected States.
- Harmonisation of surveillance and laboratory data from across states and laboratories.

Acute Flaccid Paralysis (AFP)

Table 14: Week 32

Suspected cases	Confirmed cases	Deaths	Number of States and LGAs affected
106	0	0	State: 28 + FCT LGA: 106

Table 15: AFP Year to date (week 1 – 32, 2024/2025)

Suspected cases		Confirmed cases		Deaths		CFR	
2024	2025	2024	2025	2024	2025	2024	2025
4,306	3,398	0	0	0	0	0%	0%

Figure 14: Trend of suspected and confirmed cases of AFP by epidemiological week, 2025.

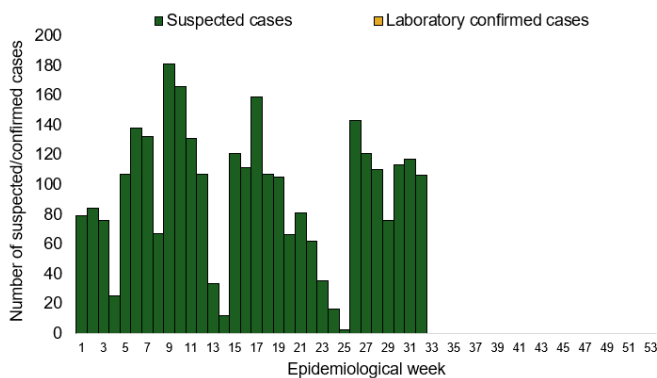
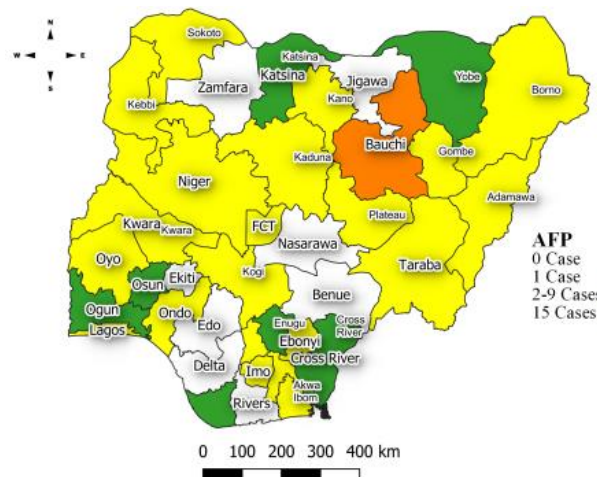


Figure 15: Suspected cases of AFP by State, Nigeria, week 32, 2025.



Key points

- There were 106 suspected cases of AFP reported from 106 LGAs in 28 states and FCT. There was no laboratory confirmed case and no death was recorded.

COVID-19

Table 16: Week 32

Suspected cases	Confirmed cases	Deaths	Number of States and LGAs affected
113	2	0	State: 5 + FCT LGA: 43

Table 17: COVID-19 Year to date (Week 1- 32, 2024/2025)

Suspected cases		Confirmed cases		Deaths		CFR	
2024	2025	2024	2025	2024	2025	2024	2025
1,288	2,211	798	37	1	0	0.1%	0%

Figure 16: Trend of suspected and confirmed cases of COVID-19 by epidemiological week, 2025.

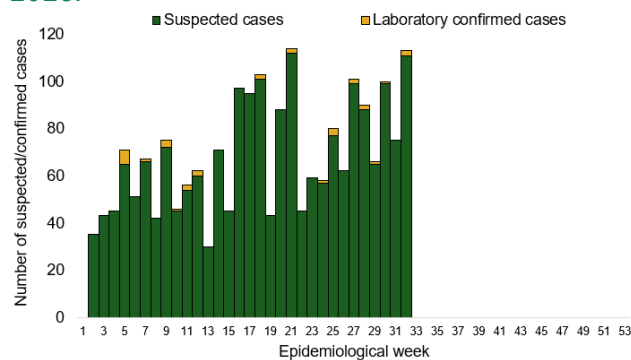
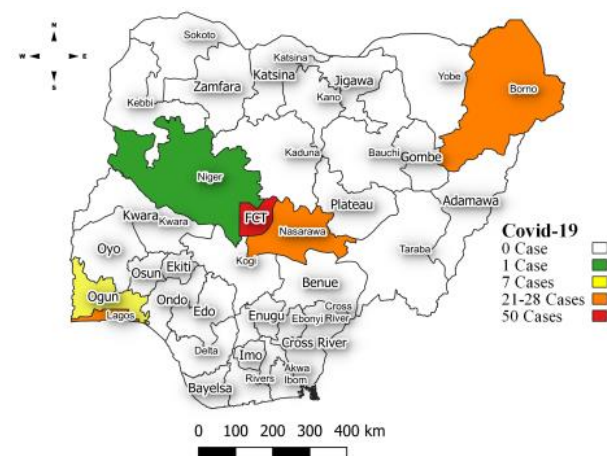


Figure 17: Suspected cases of COVID-19 by State, Nigeria, week 32, 2025.



Key points

- There were 113 suspected cases of COVID-19 reported from 43 LGAs in five states and FCT. There were two laboratory confirmed cases and no death was recorded.

Actions

To date:

- National COVID-19 Technical Working Group (TWG) is monitoring activities in all states.
- Harmonisation of surveillance and laboratory data from across states and laboratories.
- Provision of off-site surveillance support to affected States.

Diphtheria

Table 18: Week 32

Suspected cases	Confirmed cases	Deaths	Number of States and LGAs affected
293	243	34	State: 8 LGA: 39

Table 19: Diphtheria Year to date (week 1 – 32, 2024/2025)

Suspected cases		Confirmed cases		Deaths		CFR	
2024	2025	2024	2025	2024	2025	2024	2025
13,372	5,790	8,636	3,899	362	281	2.7%	4.9%

Figure 18: Trend of suspected and confirmed cases of Diphtheria by epidemiological week, 2025.

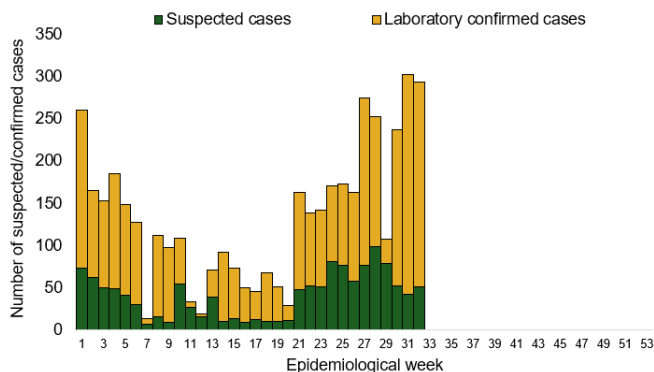
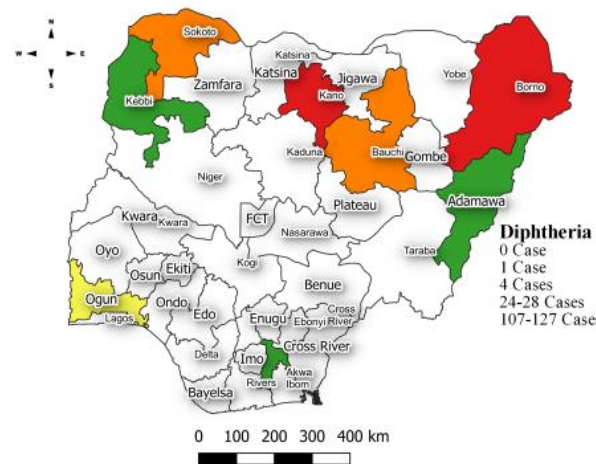


Figure 19: Suspected cases of Diphtheria by State, Nigeria, week 32, 2025.



Key points

- There were 293 suspected cases of Diphtheria reported from 39 LGAs in eight states. There were 243 confirmed cases and 34 deaths were recorded.

Actions

To date:

- National Diphtheria Technical Working Group (TWG) is monitoring activities in all states.
- Weekly EOC meeting.
- Provide technical and off-site support to states on case identification, reporting, and response, especially to non-reporting and low-burden states.
- Data harmonization with laboratory and case management pillars.

National Influenza Sentinel Surveillance

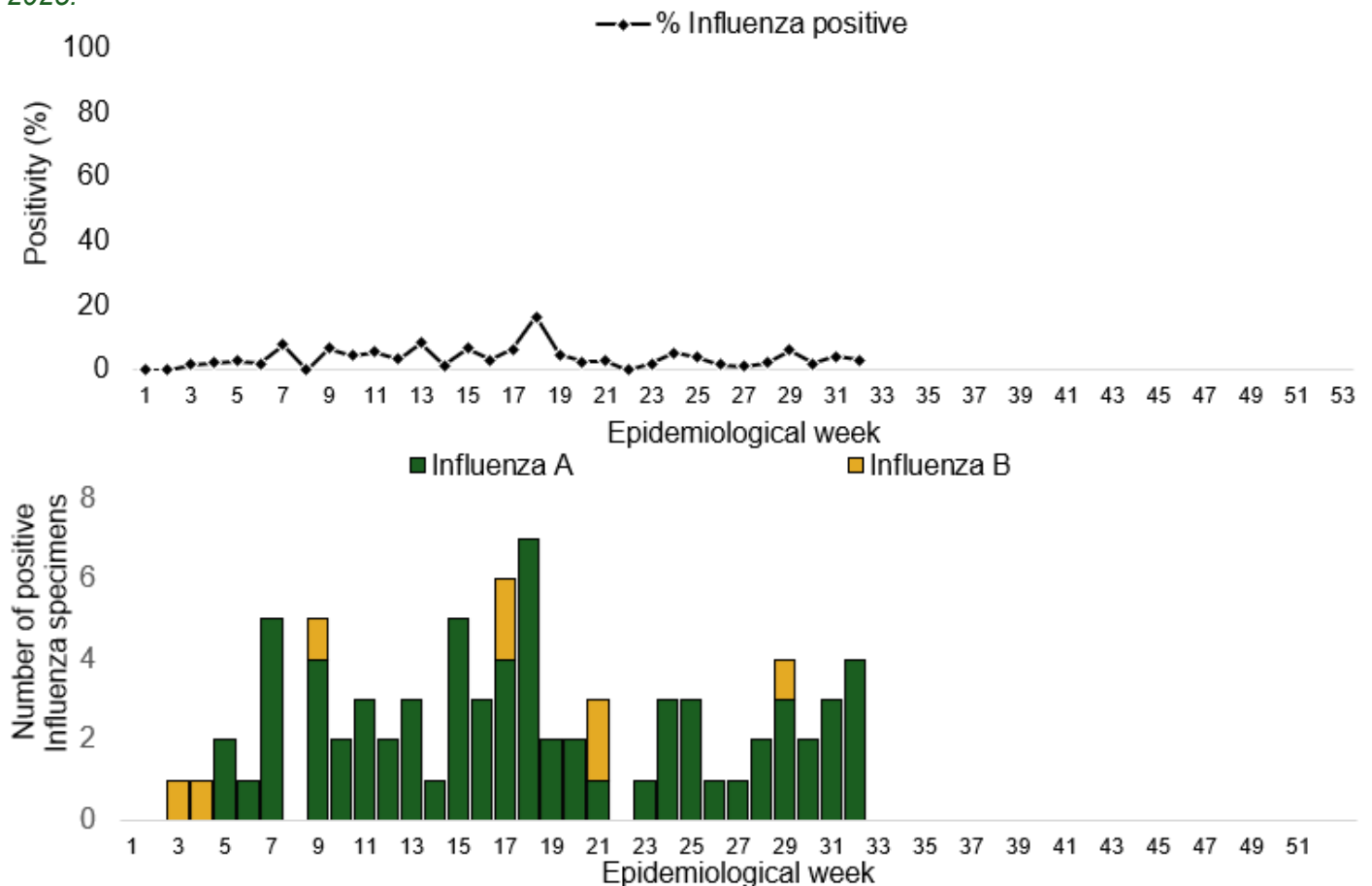
Table 30: Week 32

Suspected cases	Confirmed Cases	Confirmed Cases by type	
		Influenza A	Influenza B
134	4	4	0

Table 21: Year to date (week 1 – 32)

Suspected Cases	Confirmed Cases	Confirmed Case by type	
		Influenza A	Influenza B
2,329	103	94	9

Figure 20: Number of influenza positive specimens by type and percentage positive by epidemiological week, 2025.



Event Based Surveillance (EBS)

Week 32

Key points

Epi Week 32

- 205 calls were successfully routed to agents and answered.
- Over 1,210 articles scanned through Epidemic Intelligence from Open Sources (EIOS) and other manual sources.
- From the calls, EIOS, and other manual sources, two signals were picked.

Cumulatively, from week 1 - 32

- 3,993 calls were successfully routed to agents and answered.
- 53 Signals were picked and escalated.

Figure 22: Number of signals/events per week, 2025.

